

# PENPOWER TOOYA PRO Quick Guide

TOOYA PRO has a wide active area design so that you can use it with your wide screen without distortion problem. Moreover, in Windows® Vista™, there are many pen features such like, note taking, handwriting recognitions, and gesture recognitions to make you get the result you want quickly and easily. Just follow this quick guide and enjoy your e-life with our TOOYA PRO.

## Package Contents

* Graphics Tablet x 1	* Pen tweezers x 1
* Pen x 1	* CD x 4
* Pen Holder x 1	* Quick Guide x 1
* Refill x 2	

## Hardware Introduction

**Slim Tablet:** Flat Design TOOYA PRO is not only a tablet but also a mouse pad.

**Pen:** The pen is used as a normal handwriting pen. On the "About" tab, make sure the "Tracking Mode" is set to "Pen". You can customize the side button in the tablet setting.

The pen has the power saving function. If the pen does not be used more than 3 minutes, it would be asleep. The pen can be used again while you press the tip of the pen.

## How to chang baterry and refill

1. Take off the tail cover.
2. Open the pen cover.
3. Change a new baterry then close pen cover and put on tail cover.
4. Please use tweezer to draw the refill from the pen then chang a new one.



## PENPOWER TOOYA PRO 12.1"

TOOYA PRO 12.1"	
Active area	10" x 6.25"
Outline dimension	306x257x9mm
Resolution	2000 lpi.
Report rate	125rps
Pen pressure	1024 levels
Reading high	Max 10 mm
LED indicator	1 blue LED
Power consumption	Max 40mA
Interface	USB 1.1 (full Speed)
USB cable	1.5 meters
Support operating system	Mac OS X system/Windows 2000/XP/ Vista

### System Requirement

PC computer running Windows® 2000/XP/Vista™ or Macintosh© computer running Mac OS X V.10.2.8 & higher with powered USB port, CD-ROM driver and wide display.

### Above Windows® Vista™ Premium

TOOYA PRO is a Windows Vista plug- n- play device. You can use the basic tablet function without installing any driver, just plug- n- play.

Now Microsoft® brand-new OS Vista™ provides a lot of pen experience which was available in XP Tablet PC Edition. With Vista, you can get a great pen experience which includes, note taking, handwriting recognitions, and gesture recognitions to make you get the result you want quickly and easily. This manual will guide you to find these pen experiences in Windows Vista (above Windows Vista Preimum)

*Remark: Due to Microsoft's package definition, your Vista and Office 2007 may not get all pen experience application software in your Vista and Office 2007. Please check your Vista version first.*

### Tablet PC Setting

You can find the program to set up your pen:

Start -> Control Panel -> Tablet PC setting -> Pen and Input Device.

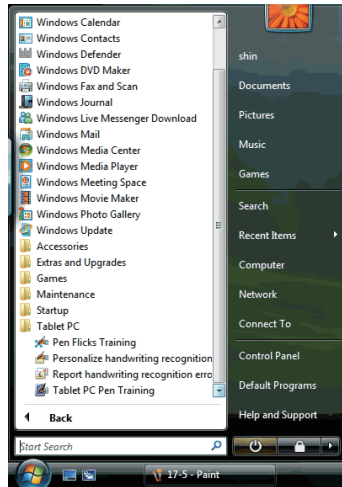
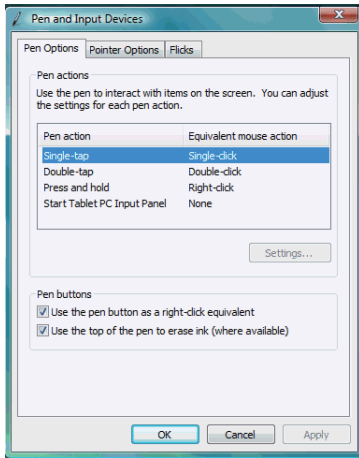
Also, there are pen trainings included. Start -> All Programs -> Tablet PC

-> Pen Flick Training

-> Personalize handwriting recognition

-> Report handwriting recognition errors

-> Tablet PC Pen Training



### **Pen experience application available in Window Vista™ Ultimate Version and Office 2007**

Pen feature is build-in in office 2007 Word, Excel, Outlook and Power Point. You can easily make any inking with your office documents or a handwriting letter directly in Outlook.


The path in Word, Excel, and Power Point is Review -> Start Inking

The path in Outlook is Message -> Start Inking

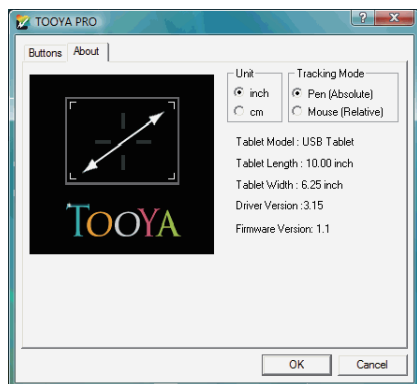
### **Windows® 2000/XP/Vista™ basic**

Under Windows® 2000/XP/Vista™ basic, you have to install driver before the device is plugged to your PC. Once the driver is installed successfully, TOOYA PRO will work.

### **Tablet Setting**

Execute Start -> All Programs -> Tablet -> Tablet Setting or click the icon  at right bottom corner of the screen.

On the "About" tab, the tablet size can be chosen in centimeter or inch. The model of tablet and version are shown on this page too. You can also select pen mode or mouse mode here.



## Pen Setting

The pen is used as a normal handwriting pen. On the "About" tab, make sure the "Tracking Mode" is set to "Pen".

### Side Button

On the "Buttons" tab, click on "Side Button 1" to customize the side button.

### Default settings

Side Button 1 = right click

Side Button 2 = left double click

Pen Point = left click

### Pen Offset Value

When using the tablet, if you want to use a new pen without restarting the computer, you need to perform the "Pen Offset Value" setting.

1. On the "Buttons" tab, uncheck the "Auto Setting" box to remove the former value.
2. Click the "Adjust" button. Then follow the onscreen instructions for adjustment. Tap the "OK" button when the "OK" message appears.
3. Check the "Auto Setting" box for your computer to detect the new pen offset value automatically when restarted.

### Click Pressure

1. On the "Buttons" tab, move the slider up and down to adjust the pen pressure from 0 to 30 (0 is the lightest, and 30 is the heaviest).
2. Click the "Test" button to launch the "Click Pressure Test" writing area. Then you can test if the setting is correct.

