

Penpower Presenter Pen User Manual

Version: V7.2

Release: August, 2010

Penpower Technology Ltd.,

Software User License Agreement

You are licensed to legally use this software program (“the Software”) by Penpower Technology Ltd (“Penpower”) under this license agreement (“The Agreement”). If you do not agree with any of the provisions in this Agreement, please do not install, copy or use the Software. By using the Software, you are deemed to fully understand and accept the provisions of this Agreement.

1. Intellectual Property

All intellectual property rights in the Software, together with all information and documents included in the packaging for the Software (including but not limited to copyrights), are property of Penpower, and are protected by relevant laws and regulations.

2. License to Use

You are authorized to use the Software on one (1) single computer only. You may not use the Software on any other machines other than the said single computer.

3. Authority to Copy

The Software and all documents included with the Software, and copyright thereof, are property of Penpower. You are licensed to make one (1) copy of the Software for your personal backup purposes. All other acts of copying are strictly prohibited.

You may not sell, lease, disassemble, reverse engineer, copy, translate, adapt or derive the Software, or obtain the source code of the Software by any other means. You may not use the Software for any purposes other than those permitted under this Agreement.

4. Business Users

If you need to install or use the Software on more than one (1) computer, please contact Penpower or our local distributor to purchase a license for the additional use.

5. Liability

You agree to indemnify Penpower against all losses, costs, debts, settlement payments or other expenses (including but not limited to attorneys fees) arising from your breach of this Agreement, and you agree to compensate Penpower for all of the abovementioned damages.

6. No Warranty

Effectiveness of a packaged software in handling information is closely related to its software and hardware environment. The Software is published following careful development and product testing by Penpower, but Penpower is not able to conduct tests based on all possible combinations of software and hardware environment. Therefore, Penpower is unable to promise nor warrant that there will be absolutely no risk of loss or damage of information, or any other kind of loss, during installation and/or execution of the Software. You must be fully aware of your risks in using the Software.

Penpower will provide you with the Software and support services in respect of the Software to the maximum extent permitted by law. However, Penpower does not warrant that the Software and information included in the package of the Software contain no defects or errors. Penpower is not liable for any indirect, special or incidental loss arising from the

Software, including but not limited to loss of profits, damage to business reputation, cessation of work, hardware malfunction or damage, or any other commercial damage or loss arising from commercial use of the Software.

7. Limitation of Liability and Damages

The maximum amount of compensation payable by Penpower, in respect of any damage incurred by you for any reason under this Agreement, is limited to the amount you have already paid to Penpower in respect of the Software.

Under no circumstances will Penpower be held liable for the possibility of loss, notwithstanding Penpower may be aware of the possibility of such loss.

8. Prohibition Against Sublicense

You are prohibited to assign the license in respect of the Software granted to you under this Agreement, or to grant a sublicense to another person.

9. Jurisdiction

With regards to any disputes arising from this Agreement, Penpower and you agree that the court having jurisdiction over the business location of Penpower will be the court in the first instance.

10. Miscellaneous

In the event that any provision of this Agreement is found to be invalid at law, such invalidity will not affect the validity of any other provisions, or the legal enforceability of such other provisions.

In the event that the Software cannot be executed under conditions of normal use, due to any damage to the original disk/s, Penpower will replace the disk/s free of charge.

FCC Note

This equipment has been tested and found to comply with the limits for a Class B digital device, pursuant to part 15 of the FCC Rules.

- (1) These limits are designed to provide reasonable protection against harmful interference in a residential installation.
- (2) This equipment generates, uses and can radiate radio frequency energy and, if not installed and used in accordance with the instructions, may cause harmful interference to radio communications. However, there is no guarantee that interference will not occur in a particular installation. If this equipment does cause harmful interference to radio or television reception, which can be determined by turning the equipment off and on, the user is encouraged to try to correct the interference by one or more of the following measures:
 - Reorient or relocate the receiving antenna.
 - Increase the separation between the equipment and receiver.
 - Connect the equipment into an outlet on a circuit different from that to which the receiver is connected.
 - Consult the dealer or an experienced radio/TV technician for help.* Without the permission from the manufacturer, please do not modify this equipment arbitrarily.

Contents

Chapter 1 Product Overview	1-1
1.1 Product Features	1-1
1.2 Hardware Introduction	1-2
1.2.1 Hardware Specification	1-2
1.2.2 Hardware Function Introduction	1-2
Chapter 2 Installation and Settings	2-1
2.1 System Requirements	2-1
2.2 Handwriting Software Installation	2-1
2.3 Hardware Connection	2-4
2.4 Run Presenter Pen Handwriting System	2-4
2.5 Registration	2-4
2.6 Calibration	2-5
2.7 ID Code Matching	2-5
2.8 Mouse Mode Operation	2-6
Chapter 3 New Pen/Mouse Mode	3-1
3.1 Run Presenter Pen Handwriting System	3-1
3.2 Switching Modes	3-2
3.3 New Pen Mode	3-3
3.3.1 Full Screen Writing	3-4
3.3.2 How to Write	3-5
3.3.3 How to Quickly Correct, Enter Phrases and Symbols	3-6
3.4 Balloon UI	3-7
3.4.1 Phrase Correction	3-8
3.4.2 Artificial Intelligence	3-9
3.4.3 Split	3-10
3.4.4 Merge	3-10
3.4.5 Homophone	3-11
3.4.6 Related word	3-12
3.5 Penpower Mouse Mode	3-13
3.5.1 Artificial Intelligence	3-13
3.5.2 Learning String	3-13
3.5.3 Update Phrase Database	3-15
3.5.4 Signature	3-17
3.5.5 Online Translator	3-18
3.5.6 Input Words by Related Phrase	3-20

3.6 Penpower Input Tool	3-21
3.7 Settings	3-22
3.7.1 Recognition Setting.....	3-22
3.7.2 General Setting.....	3-24
3.7.3 Writing Setting.....	3-25
3.7.4 Update Method Setting	3-26
3.8 Writing Application	3-27
3.8.1 Switch Version	3-27
3.8.2 Gesture	3-28
3.8.3 Mix Traditional and Simplified Writing	3-28
3.8.4 Using Presenter Pen in MSN Messenger	3-29
Chapter 4 Presenter Mode	4-1
Chapter 5 Assistant Tools	5-1
5.1 Penpower Voice Reader.....	5-2
5.1.1 Use Penpower Voice Reader	5-2
5.1.2 Reading Setting.....	5-3
5.2 Penpower Translator.....	5-4
5.2.1 English Words	5-4
5.2.2 Chinese Characters.....	5-5
5.2.3 English Chinese Sentence Translation	5-5
5.2.4 Chinese English Sentence Translation	5-6
5.2.5 Button Functions	5-6
5.3 Penpower Input Tool	5-8
5.3.1 Phonetic Input Tool.....	5-8
5.3.2 Keyboard Input Tool	5-9
5.3.3 Dictionary Input Tool.....	5-9
5.3.4 Symbol Input Tool	5-9
Chapter 6 Fast User Switching	6-1

There may be newer versions of the software that was released during or after this product's manufacturing date. If the content in the User Manual differs from the on-screen interface, please follow the instructions on the on-screen interface instead of the User Manual.

Chapter 1 Product Overview

1.1 Product Features

<<Presentation Function>>

- **Compatible with PowerPoint:** The presenter function is compatible with MS PowerPoint.
- **Built-in slideshow controls:** Next/Previous slide buttons and black screen functions help make your presentation more professional.
- **Mouse mode:** By simply removing the stylus out of its slot, the stylus acts as your mouse so you can open links with just one touch of the stylus.
- **Timer:** The device helps you manage your time during presentations with its built-in LCD timer. The automatic five, two minutes and a times-up flashing light let you present without worrying about time constraints.
- **Laser pointer:** You can highlight main points in your presentation with the built-in laser pointer.

<<Handwriting Function>>

- **Multilanguage recognition kernel:** The Pen recognizes over 23,000 Traditional/Simplified Chinese characters, Hong Kong characters (HKSCS 2001), Japanese Kanji/Katakana/Hiragana, English letters, symbols, and numbers.
- **Artificial intelligence recognition kernel:** Let the Pen adapt to your handwriting and become your personalized device with a built-in handwriting recognition system.
- **Full-screen inputting:** Write freely on the device and have it display on the big screen. This function can be integrated into other applications like Mail, or Microsoft Word... etc.
- **MSN/Yahoo Messenger pen tracing function:** Send handwritten messages and hand-drawn graphics through any Instant Messenger with your extra personal touch.easier.



1.2 Hardware Introduction

1.2.1 Hardware Specification

1. Dimensions: 118mm x 62mm x 16mm
2. Weight: 58g
3. Writing Area: 56mm x 43mm
4. Radio Frequency: 2.4G
5. Transmission Distance: 10m

1.2.2 Hardware Function Introduction



1. Wireless receiver: When you pull out the wireless receiver from the Presenter Pen hardware, the power turns on automatically. Connect the wireless receiver to the USB port of your computer, the Presenter Pen will connect with your computer wirelessly. Plug the wireless receiver back to the Presenter Pen, the power turns off.
2. Left button:
Handwriting Mode: When press the left button, the system will replace the recognized character with the next candidate character. Press again, replace to the next candidate character and so on.

Presenter Mode: In the Presenter mode, the left button acts as the page up function to show the previous page.

3. Right button:

Handwriting Mode: It provides 7 Frequently Used punctuation symbols such as , . , : ; ? ! . When press the right button, the system will input the first symbol. Press it again to replace with the next symbol and so on.

Presenter Mode: In the Presenter mode, the right button acts as the page down function to show the next page.

4. Laser point button: Press the laser point button to highlight the main points in your presentation with the red laser light.

5. LCD monitor: Press the timer setting button (See item 11) after 5 seconds, the LCD monitor will display the left time and alarm you at 2, 5 minutes left and time is up with the gentle red flash.

6. Writing/Mouse area:

Handwriting Mode: Writing in this area.

Presenter Mode: When pull the stylus out, you can use this area as a mouse pad.

7. Laser light: When press the laser point button (See item 4), it will turn this red laser light on.

8. ID matching button: If there is more than two Presenter Pens or other wireless devices around you and interference your writing or presentation, you may push ID matching button to match your Presenter Pen and your wireless receiver. Please refer to 2.7 ID Code Matching for details.

9. Battery cover: Push the wedge of the battery cover upward to open the battery cover, and put an AAA battery in with the positive electrode in the right side. When the electric power is insufficient, the LCD monitor will display “Lo” in the timer screen to remind you to replace the battery.

10. Stylus pen: Pull the stylus pen out to write or use it as a mouse. Place it back, when you do not need to use the stylus pen.

11. Timer setting button: Let you set the presentation time. Press it once, add 5 minutes and so on. The remaining time will display on the LCD monitor. (See item 5)

Tip: *Press and hold the [Timer setting button] for a while, you can reset the timer.*



12. [Pen/Mouse Mode] switch/Black screen button:

Handwriting Mode: Press this button to switch between the [New Pen Mode] and [Penpower Mouse Mode] / [Standard Mouse Mode].

Presenter Mode: Press this button during the presentation to display the black screen. Press it again to display the previous screen.

13. Presenter/Handwriting mode switch: Switch up to the [Presenter Mode]. Switch down to the [Handwriting Mode].

Chapter 2 Installation and Settings

2.1 System Requirements

1. Intel Pentium II 300 CPU or above
2. 256MB RAM
3. 250MB of available hard disk space
4. Windows 7/Vista/XP
5. USB Port

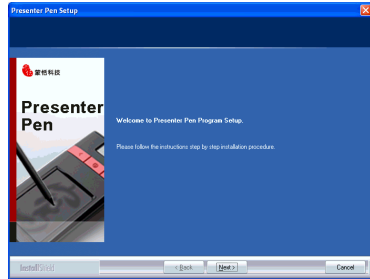
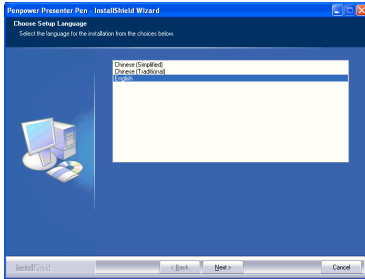
2.2 Handwriting Software Installation

1. Please insert CD-ROM disc into the CD-ROM drive and the system will automatically launch setup.exe. Select the “Setup Presenter Pen” option.

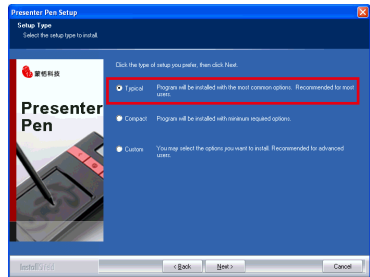
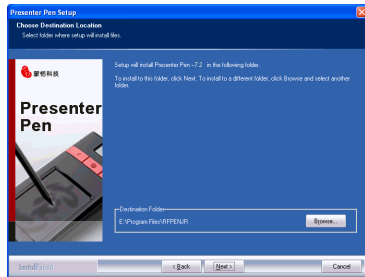




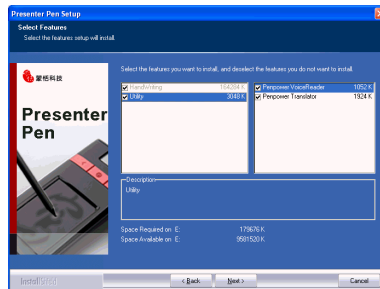
- Please exit all of the Penpower applications to ensure that the install/repair process will run properly. Select the language version you wish to install then click “Next”.



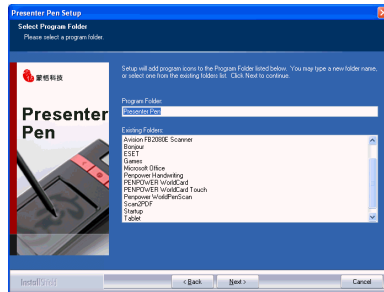
- Select the installation folder and type. Typical installation is recommended.



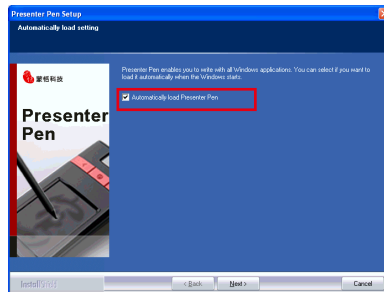
Note: If you choose custom installation type, you can check every single function to install, except the functions in grey color.



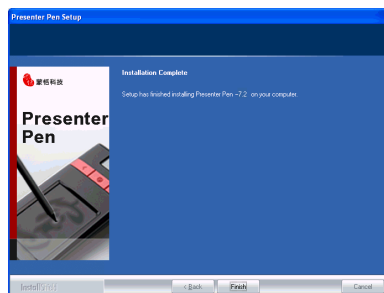
4. Click Next to use the default folder name.



5. Click Automatically load Presenter Pen if you wish to automatically run Presenter Pen when the computer starts.



6. Click “Finish” to complete the installation.





7. Presenter Pen offers various Chinese fonts. You can install DYNA Fonts from the main installation menu. Select the fonts you desire to install, then follow the instruction to install.



2.3 Hardware Connection

1. Open the battery cover of the Presenter Pen hardware and put an AAA battery in.
2. Pull the wireless receiver out from the Presenter Pen hardware, and plug it to the USB port of your computer.

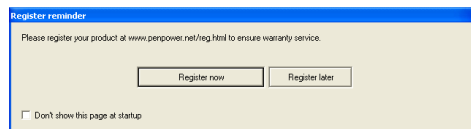
Tip: If any signal interference, you can connect the wireless receiver to an extension USB cable to avoid the interference equipment.

2.4 Run Presenter Pen Handwriting System

Run [Start/All Programs/Presenter Pen/Presenter Pen] to open the Presenter Pen window.

2.5 Registration

A register reminder window will pop up when you launch Presenter Pen for the first time. It reminds you registering your product at <http://www.penpower.net/reg.html> for ensuring the warranty service. Click [Register now] to register. If you click [Register later], you may go to [About/Register] when you need.

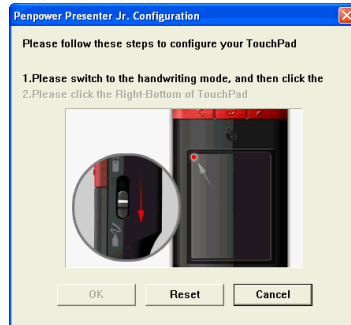



2.6 Calibration

When you first time launch the Presenter Pen, the system will ask you to calibrate the Presenter Pen.

1. Switch the [Presenter/Handwriting mode switch] downward to the [Handwriting mode].
2. Click on the top-left corner spot of touch pad by the writing pen.
3. Click on the bottom-right corner spot of touch pad by the writing pen.
4. Click on [OK] to finish the calibration.


Tip : *After calibration, the new configuration would take effect immediately. You do not need reboot or reload Presenter Pen handwriting system.*



In the future, if you find that your handwriting on screen is not on the right location, you need to calibrate your Presenter Pen. Please mouse click Presenter Pen  icon from the lower-left corner and select calibration from the menu to launch the calibration window.

2.7 ID Code Matching

After you connected the Presenter Pen and launched the Presenter Pen, you should able to write right away. If there is more than two Presenter Pens or other wireless devices around you and interference your writing or presentation, you may match your Presenter Pen and your wireless receiver.

1. Please mouse click the Presenter Pen  icon from the lower-left corner and select calibration from the menu to launch the ID code matching function.
2. Press the [ID matching] button on the back side of the Presenter Pen.
3. An [ID-matching is successful] window appears when the ID matching is done.



2.8 Mouse Mode Operation

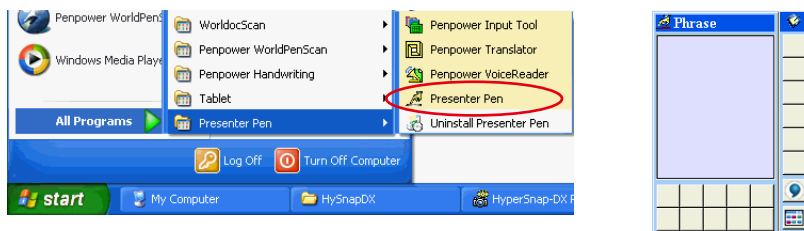
1. Moving: Put the pen on the Presenter Pen, and then move it on the panel gently.
2. Click: Hit the Presenter Pen once.
3. Dragging: Hit the Presenter Pen twice quickly, hold and move the pen on the panel while second pen down.
4. Double click: Hit the Presenter Pen twice quickly.
5. The left and right buttons are act as the left and right buttons of the mouse.



Chapter 3 New Pen/Mouse Mode

3.1 Run Presenter Pen Handwriting System

If you installed [New Pen/Mouse Mode] and run [Start/All Programs/Presenter Pen/Presenter Pen], you will see the window as following:





Note: Please make sure that you have switched the [Presenter/Handwriting mode] switch down to the [Handwriting mode].




3.2 Switching Modes

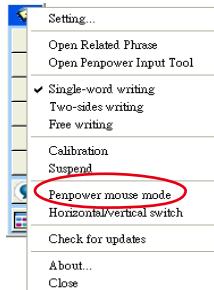
[New Pen/Mouse Mode] provides New Pen and Penpower Mouse modes. The [New Pen mode] provides writing and recognition functions. You can select the candidates, related words, phrases and symbols via mouse.

In the [Penpower Mouse mode], you can use the Presenter Pen and the stylus as the mouse to select the candidates, related words, phrases and symbols. It also provides hand-writing inking review, and some function buttons such as AI, learning tool, phrase, signature and on-line translator.

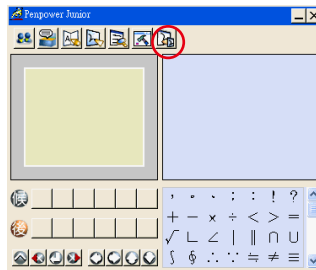
When Presenter Pen is launched for the first time, it will display the [New Pen mode]. Left mouse click on the [Menu]  button or right mouse click on the toolbar  to open the options menu. Select [Penpower mouse mode] to switch to the [Penpower Mouse mode].

In the [Penpower Mouse mode], click on the [Switch]  button to switch back to the [New Pen mode].

Tip: The second function button on right side of the Presenter Pen allows fast switching between the New Pen mode and Penpower Mouse mode/standard mouse.







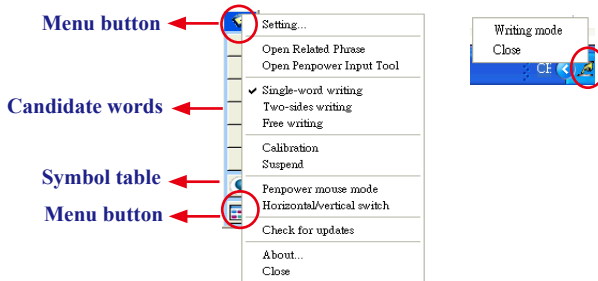
New Pen mode




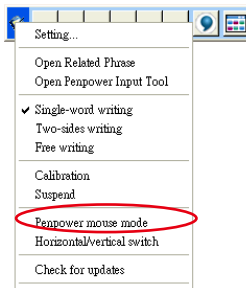
Penpower Mouse mode

3.3 New Pen Mode

When you run Presenter Pen, the vertical [New Pen mode] toolbar will appear. You can write words on the Presenter Pen to input words. Right click the mouse on the  or click menu  to open the menu. Double click  to close the [New Pen mode] toolbar temporarily. Click  and select [Writing mode] to open the [New Pen mode] toolbar.




The [New Pen mode] provides vertical and horizontal layout of the toolbar. Click  button to select the layout of the toolbar.



Horizontal Switch



The candidate area of the [New Pen mode] provides you to promptly correct the recognized words, for example when you wrote ‘蒙’, and it recognized to ‘豪’, you can select ‘蒙’ from the candidate area via the mouse.

Click the symbols table  button via the mouse to open the symbols table and enter the corresponding punctuation symbol.

3.3.1 Full Screen Writing

There are three different options in the main menu.

Single-word writing

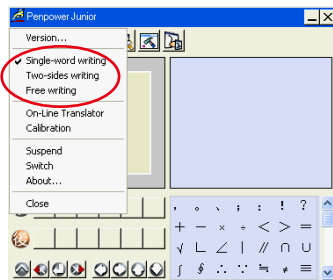
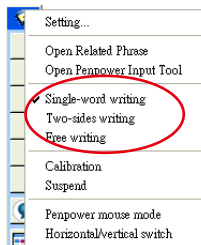
It is allowed to handwrite one word only at one time. You can not handwrite the next word until the recognition result of current word has been finished.

Two-sides writing

After the first stroke is written, one vertical line would be displayed on the center of screen. All the strokes written on the same side would be considered as part of one word. When a new stroke is crossed to the other side, it means that the last word is finished and the next word start to write.

Free writing

You can handwrite multiple characters before recognition at one time. Forty one characters at most is allowed. It permits left-to-right, or top-to-bottom free writing order. Remember to keep adequate distance between two contiguous words when you write. It affects the result of character segmentation.



3.3.2 How to Write

It would be better to keep strokes of the same word closed, and do not overlap between words when you write. You need to finish writing every strokes of one word.

Right example

Write three words of 『明日月』.



Wrong example 1

Overlap between two words. All the strokes may be recognized as one word.



Wrong example 2

The two parts of one word are written far away from each other. All the strokes may be segmented into two words.




Auto Phrase Correction

The system automatically proofreads on your writing content to improve the recognition rate. For example, when you continuously write 『天下太平』 four characters, but the character 『天』 is incorrectly written as 『夫』, so they become 『夫下太平』. Penpower uses its internal phrase dictionary to correctly recognize your intended result 『天下太平』.



3.3.3 How to Quickly Correct, Enter Phrases and Symbols

When writing, candidate words based on the previous input will be displayed on the [New Pen mode] toolbar. Each press of the left function button on the Presenter Pen will move the candidate words forward by one and also correct the results. Alternatively, select a candidate word on the [New Pen mode] toolbar to correct it. Click the [Symbol table]  button with the mouse to open the [Symbol table] and enter the corresponding punctuation symbol; the right function button of the Presenter Pen provides the same symbols.

You can also press the second function button on right side of the Presenter Pen to switch to the [Penpower Mouse mode]. In the [Penpower Mouse mode], you can select the candidate word, post-related word, phrase or symbol.

For example: In [New Pen mode], the input 『蒙恬科技』 had the character 『技』 mis-read as 『投』. You can press the second function button on right side of the Presenter Pen to switch to the [Penpower Mouse mode] then choose from the candidate words field 『技』 to correct the mistake. Once corrected, press the second function button on right side of the Presenter Pen to switch back to the [New Pen mode] and continue writing.












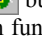

3.4 Balloon UI

This unique user interface let you edit recognition result freely in any application. The visual user interface is hidden transparently. When you want to correct some word, just hover your mouse over this word for a few seconds. The [Balloon toolbar] will display on the cursor position.

蒙恬气泡式介面



Tip : *To display the [Balloon toolbar], you do not need to press any button, just hover your cursor on the word you want to correct.*


In the [Balloon toolbar], click candidate words, the AI button , the homophone , the pre-related word , the post-related word  or the phrase correction  to correct your result. Click the  button to see the raw image of your strokes. Click the  button to open the tutor. Click the  button to input punctuation symbol. Click the  button to split one word. Click the  button to merge one word with next. The  is to activate the Chinese-English translation function. Details about this function are provided further on in the manual.



Note: *In the [New Pen/Mouse mode], the [Balloon toolbar] can only be operated with the computer mouse.*

Note: *[Balloon toolbar] can be used in Office, IE, WordPad, but in Windows XP and Vista 64 bit systems, it can not be used in some software, except NotePad.*



3.4.1 Phrase Correction

If you wish to enter a common phrase such as an idiom, and you are not sure of how to write one of the characters you can substitute a similar sounding character instead. If you are not sure of the character's pronunciation either, choose any at random. When you have finished writing the phrase, select the uncertain character with the mouse then click on the phrase correction  button. The system will examine the four characters before or after this particular character to guess what you meant and make the change.

1. If you want to input an idiom such as 『拔苗助长』, and you are not sure of how to write the character 『拔』, you can write the character 『一』 instead to input 『一苗助长』.
2. Hover your mouse over the character 『一』 and wait for a moment to display the [Balloon toolbar]. Click the phrase correction button  and the 『一』 character will be changed to 『拔』.
3. If the phrase correction function came up with multiple candidate words, these will be shown in the candidate words window for you to choose from. For example, if the input was 『股份一限公司』 when you hover your mouse cursor on the 『一』 character to display the [Balloon toolbar]. Pressing the phrase correction button  will bring up a list of all phrase correction candidate words for you to choose and make the correction with.
4. Click the character you want to input from the list.

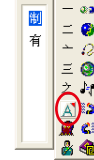
一苗助长

一苗助长



拔苗助长

股份一限公司



3.4.2 Artificial Intelligence

When you use candidate word or AI button to correct result, the system will modify its recognition database to adapt your personal writing style to improve the recognition rate.

1. Write some words. The result would be sent to your cursor location.

2. For example you wrote 『蒙恬科技』, but 『恬』 is wrongly recognized as 『恰』.

蒙恰科技


3. Hover your mouse over the word 『恰』 for a while to display the [Balloon tool-bar].

蒙恰科技

蒙恬科技

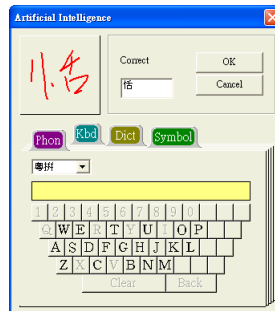



4. Click the candidate word if the correct word is there.

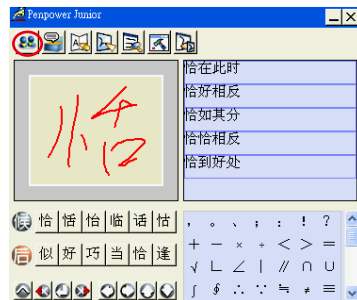
5. Otherwise click the AI button  to open the AI correction dialog.

6. Input the correct word 『恬』, and then click [OK].

7. You will see the wrong result 『恰』 is already updated as 『恬』. Your personal writing style has also been learned.




Tip: You can also press the second function button on right side of the Presenter Pen to switch to the [Penpower Mouse mode]. If the correct word appears among the candidate words, simply click on it to make the change. If the correct word is not among the candidate words, press the [Penpower AI]  button to open the AI dialogue field to train the software.





3.4.3 Split

When two words are written too close, they may be recognized as a single word. You can use split function to separate it into two words.

1. For example, when you write four words 『日月星辰』.
2. If 『日』 and 『月』 were written too close, you may wrongly get three words of result 『明星辰』.
3. Hover your mouse over the word 『明』 for a while to display the [Balloon toolbar].
4. Click  button to separate 『明』 into 『日』 and 『月』.

明星辰


明星辰|


明星辰|



日月星辰|

3.4.4 Merge

When some strokes of one word are written far away from each other, the system may recognized it as several words. You can use merge function  to combined them into one word.

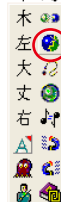
1. Write two words 『栋梁』, the recognition result will be sent to the cursor location.
2. If 『木』 and 『东』 is written far away from each other, you may wrongly get three words of result 『木东梁』.
3. Hover your mouse over the first word 『木』 for a while to display the [Balloon toolbar].
4. Click  button to merge 『木』 and 『东』 into 『栋』.

木东梁

木东梁| ↵

木东梁

栋梁| ↵




Note : Only two continuous words could be merged at one time.

3.4.5 Homophone




If you forget how to write some words, or the words are too complicated to write, you can write down some other easy homophone to get the word that you would like to input. e.g. If you want to input the word 『豫』:

1. Write any homophone of 『豫』, e.g. 『玉』.

2. Hover your mouse over the word 『玉』 for a while to display the [Balloon tool-bar].

3. Click  button to open the window of homophone words.



4. You can click  /  /  button to toggle other Zhuyin homophone/Cantonese homophone/Hanyu homophone.

5. Click 『豫』 to replace 『玉』.

豫



3.4.6 Related word


For any two contiguous words, the first one is the pre-related word of the second one. The second one is the post-related word of the first one.

e.g. 『科技』, 『科』 is the pre-related word of 『技』, and 『技』 is the post-related word of 『科』.

1. Write some words. The result would be sent to the cursor location. If 『恬』 is wrongly recognized as 『恰』, and 『科』 is wrongly recognized as 『料』.


2. Hover your mouse over the word 『恰』 for a while to display the [Balloon toolbar].

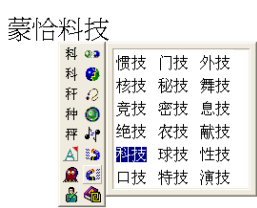
蒙恰料技

3. Click  button to open the window of pre-related phrases. If the correct phrase 『蒙恬』 is in the list, click it to update the result.



4. Hover your mouse over the word 『料』 for a while to display the [Balloon toolbar].

5. Click  button to open the window of post-related phrases. If the correct phrase 『科技』 is in the list, click it to update the result.




6. You will see the wrong result 『蒙恰料技』 is already updated as 『蒙恬科技』 at last.

蒙恬科技

3.5 Penpower Mouse Mode

The following will introduce the function buttons of the [Penpower Mouse mode], such as Artificial Intelligence, learning tool, phrase, signature, on-line translator and settings.

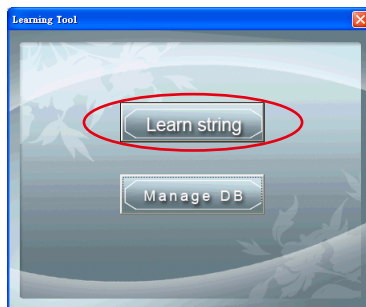
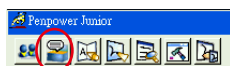
3.5.1 Artificial Intelligence

When writing a word in the [New Pen mode], you can push the middle button for switching to the Penpower Mouse mode. You can click [Artificial Intelligence function]  to adapt your personal writing style. Please refer to 3.4.2 for details.

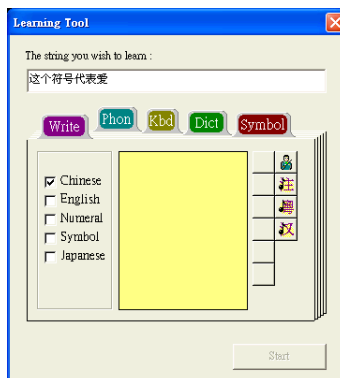
3.5.2 Learning String

A string is represented by a single symbol. You can write the symbol anytime and the recognition engine will recognize it as the entire string, minimizing needless writing.

1. In Penpower Mouse mode, click the **Learning Tool** button and click **Learn String**. The **Learning Tool** dialog box displays.

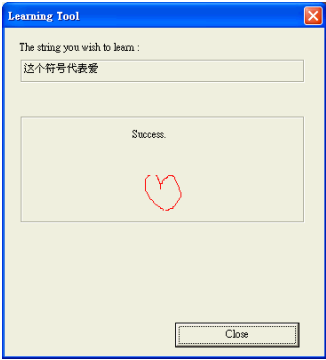
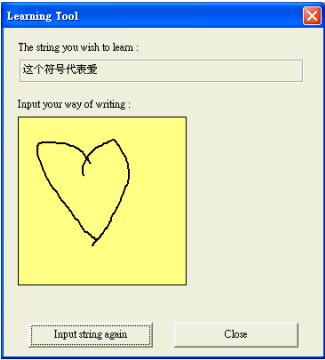


2. Enter the string you want to learn, then click **Start**.

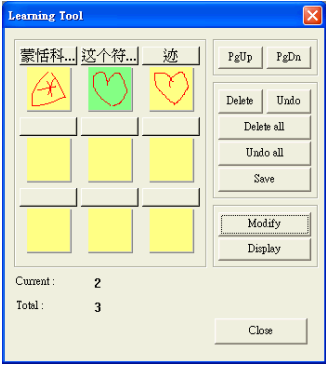
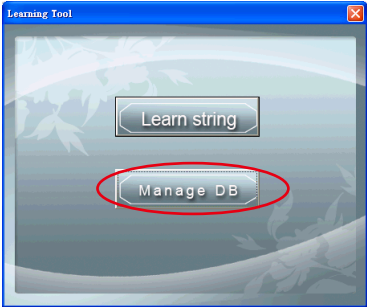




3. Write your symbol twice according to the instructions.




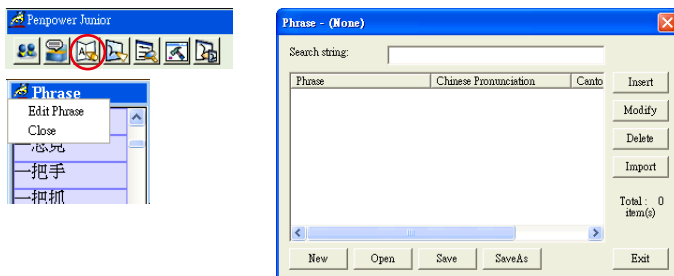
4. Click the [Manage DB] tag. You can browse though the animated symbols for strings or any of the strings you have assigned a symbol to.



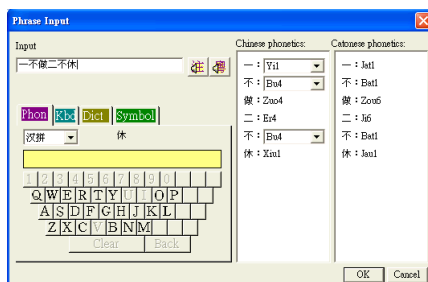
3.5.3 Update Phrase Database



There are thousands upon thousands default phrases that you can use in the Penpower handwriting recognition. It also allows you to customize the phrase database to meet your needs.

1. In [Penpower Mouse mode] press the [Phrase]  button. Or in [New Pen mode] select [Edit Phrase] from the Associations Dictionary and open the [phrase] dialogue.



2. Click [Insert] to open the [Phrase Input] dialog. You can input a new phrase here. e.g. If you want to insert 『一不做二不休』 as a phrase, input 『一不做二不休』.



You need to update the phonetics on the right side. Click  /  button to hear their pronunciation and check if the one you choose is right.

Note : *The maximum length of one phrase is 200 word. In fact, the phonetics is only for VoiceReader to read text with right sound of phonetics. If you do not care, you can skip it.*

Click [OK] to finish insertion. Afterward, if you write 『一』, then 『一不做二不休』 would be displayed in the related phrase window. Just click it to input.



3. Select on phrase from the list, and then click [Modify] to update the phonetics of this phrase. Click [Delete] to delete this phrase from database.
4. In [Search string] field, you can only input part of a phrase to find this phrase quickly.
5. You can use [New], [Open], [Save], [Save As] function to manage your phrase database (*.yib).

Note: Although you can create several phrase database, you can only choose one at one time.

6. Import file

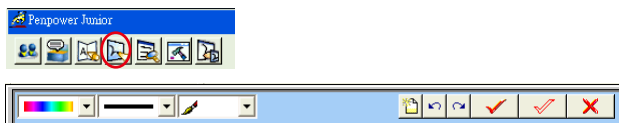
Click [Import] and select one phrase database (*.yib) or text file to import it into current database.

The text file format must follow this rule - one phrase in each line. You can edit it by any editor, e.g. NotePad.


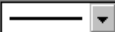




Note: Every imported phrase would own phonetecs by default. Their phonetics may be wrong. You can modify them from phrase dialog.



3.5.4 Signature

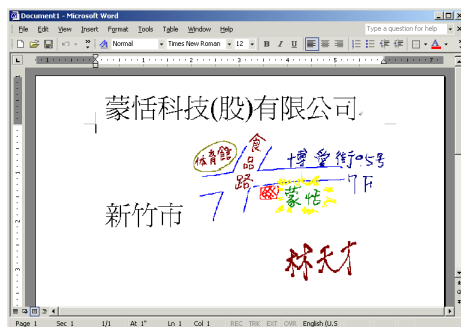
1. Move the cursor to where the signature will be.
2. Open the [Penpower Mouse mode] and press the [Signature] button. The [Signature toolbar] screen will be shown.




3. In signature mode, the left button is defined to change color.

-  : Select the color of inking.
-  : Select the thickness of inking.
-  : Select the pen style.
-  : Clear all.
-  : Undo one stroke.
-  : Redo one stroke.

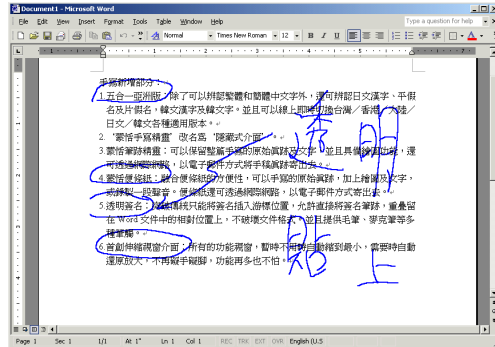
4. Click  button to cancel signature.
5. Click  button to insert your signature at the position of your cursor.



6. Click  button to overlap your transparent signature with MS Word or MS Excel document.

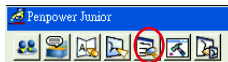


Note: You can use the transparent signature in the latest version of Word and Excel, but Office 2007 does not support this function. You may make notes and commentary by using the transparent signature feature.

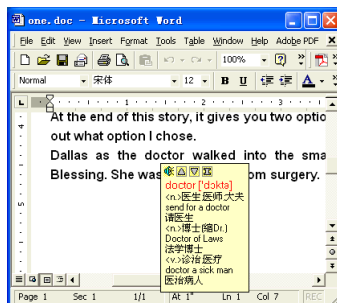
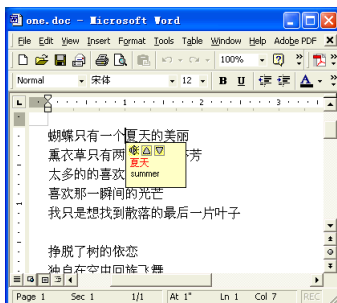



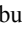
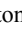
3.5.5 Online Translator

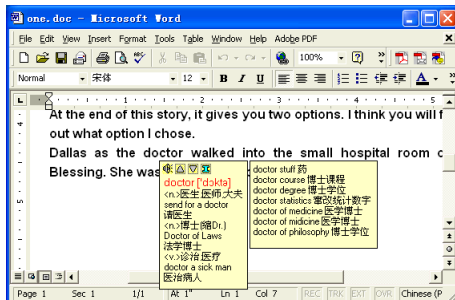
1. Open the [Penpower Mouse mode] and press the [Online Translator] button to open the Online Translator function. Press the button again to close the function.




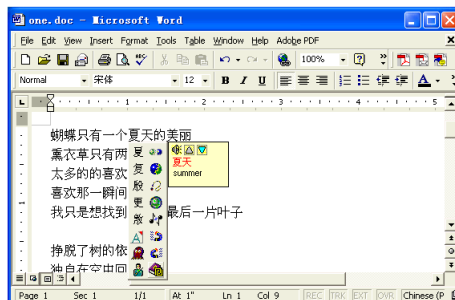
When reading English or Chinese articles, if you encounter unknown characters or phrases, Hover your mouse over the characters, and a translation window pops up to explain them for you.



When you move your mouse outside the interactive scope, the window will disappear. In the window, you can press the play  button or character  or phrase explanation  buttons.



The [Online translator] is used in the balloon interface. When you want to look up a character's translation, select  button from the candidate window.



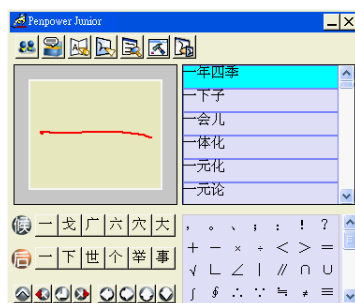


3.5.6 Input Words by Related Phrase

Phrase function provides the related phrases for inputting phrases quickly.



1. Write down the first word of one phrase. e.g. If you want to input the phrase 『一年四季』, just write the first word 『一』.
2. Press the second button on the right side of the Presenter Pen to switch to the Penpower Mouse mode. All the phrases beginning with this word 『一』 will be listed on the phrase area of the Penpower Mouse mode.
3. Click the phrase or memorized word that you want to send it into the caret. e.g. 『一年四季』.

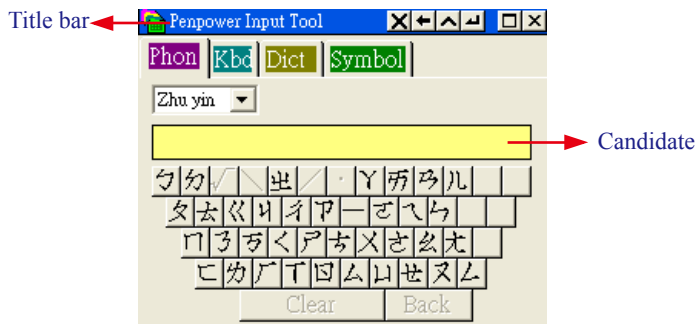
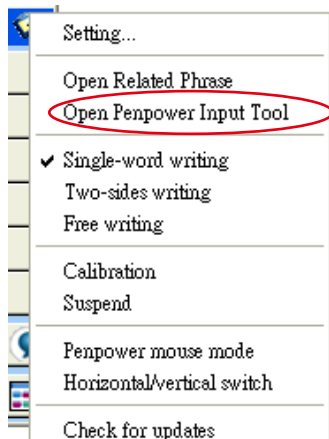
一



一年四季

3.6 Penpower Input Tool

Penpower Junior provides four types of input tools: Phonetic, Keyboard, Dictionary and Symbol. Left click on the “Menu” button  or right click on the toolbar  to open the options menu. Select [Open Penpower Input Tool] to open [Penpower Input Tool].

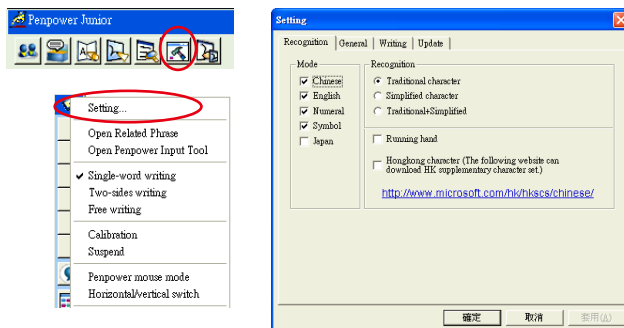


Please see Chapter 5.3 for more details.



3.7 Settings

In [Penpower Mouse mode] click on the [Setting] button or in [New Pen mode] choose the [Setting...] from the menu to open the settings page. You can configure the recognition engine, output format or writing inkings here.



3.7.1 Recognition Setting

Mode

The recognition mode of Chinese, English, Numeral, Symbol and Japanese could be turned on/off individually. You could turn on several modes at the same time.

Recognition

1. Simplified character: All of the results are in Simplified Chinese. If you do not know how to write traditional characters, you can select [Traditional to Simplified] so your writing is not recognized incorrectly as Traditional Chinese.

Note: *[Traditional to Simplified] option is available only when you switch to simplified version.*

2. Traditional character: All of the results are in Traditional Chinese.
3. Traditional+Simplified: You will get traditional characters while using traditional writing, and you will get simplified words while using simplified writing.

Unusual character

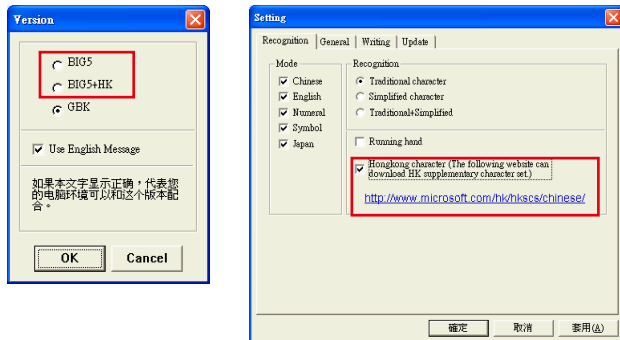
The system will recognize some unusual words only when you turn on [Unusual character] option.

Running Hand

Select this option to recognize run-on cursive.

Hongkong Character

This recognition mode is available only when the Presenter Pen set to [BIG5] or [BIG5+HK]. You can connect to <http://www.microsoft.com/hk/hkscs/default.aspx> to check the Hongkong characters list.





3.7.2 General Setting

Half shape/Full shape

To decide whether the handwriting result of alphanumeric is recognized as one-byte ASCII code or double-bytes code.

Auto load

Start Presenter Pen when Windows starts.

Direction

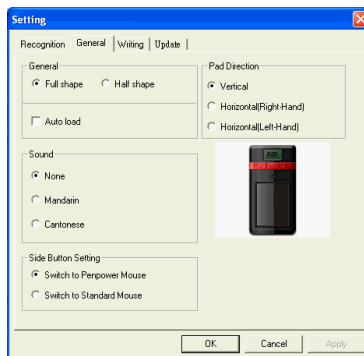
You can select the orientation of the Presenter Pen as Horizontal or Vertical. The Horizontal provides right-handed and left-handed choices.

Side Button Setting

You can set the second side button of the Presenter Pen hardware. If you select the [Switch to Penpower Mouse], it will be worked as a switch between the [New Pen mode] and [Penpower Mouse mode]. If you select the [Switch to Standard Mouse], it will be worked as a switch between the [New Pen mode] and the standard mouse.

Sound

Pronounce the character in Mandarin or Cantonese immediately after recognition.



3.7.3 Writing Setting

Ink color

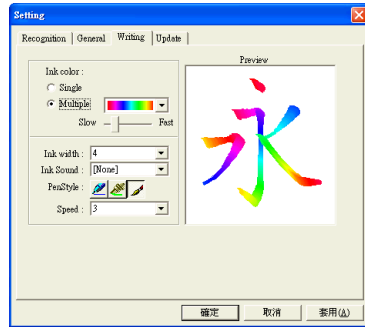
Select the color of inking. You can adjust the smoothness of color gradation when selecting [Multiple].

Ink width

Select the thickness of inking.

Ink sound

Select the sound effect while writing.



Pen style

Select the pen style.

Speed

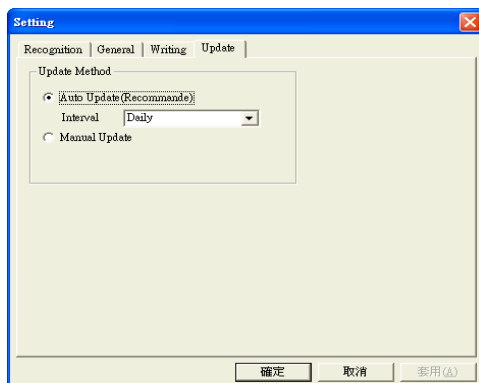
Select the writing speed. The less the relative value is, the shorter the timeout for recognition after you've stopped writing.



3.7.4 Update Method Setting

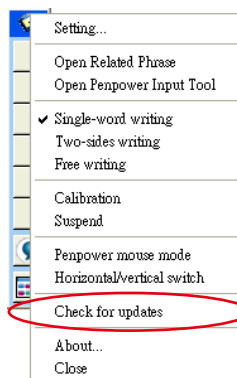
Auto Update

You are recommended to set the update method as **Auto Update** to let the system automatically check for and download updates. You can determine the check interval as daily, weekly, biweekly, or monthly.



Manual Update

You can also set the update method as **Manual Update**. Please Go to the main menu and select [**Check for updates**] and the system will then check for updates for you. If your version is the newest, the message box will display as below.

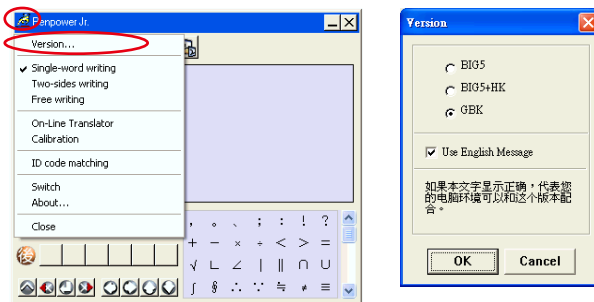


3.8 Writing Application

The following will introduce the function of Writing Application, such as Switch Version, Gesture, Mix Traditional and Simplified Writing, and Using Presenter Pen in MSN Messenger.

3.8.1 Switch Version

1. In [Penpower Mouse mode], click Penpower Junior options, then click [Version...].



2. In the Windows operating systems for Traditional Chinese, Traditional Chinese (Hong Kong) or Simplified Chinese, the output of the handwriting recognition is always encoded using Unicode. If, after switching versions, you cannot see the message displayed correctly at the bottom of the dialog box, your Windows operating system may not support the version you chose.
3. Select [Use English Message] to display all of the messages in English.



3.8.2 Gesture

Presenter Pen supports four standard writing gestures. You can write these gestures to perform certain keyboard actions.

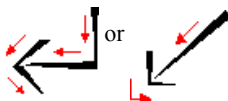
1. Delete : simulate the DELETE key.



2. Backspace : simulate the BACKSPACE key.



3. Enter : simulate the ENTER key.

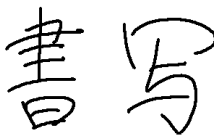


4. Space : simulate the SPACE key.



3.8.3 Mix Traditional and Simplified Writing



You can mix writing traditional and simplified Chinese characters. For example, you can write the two characters 『書寫』.



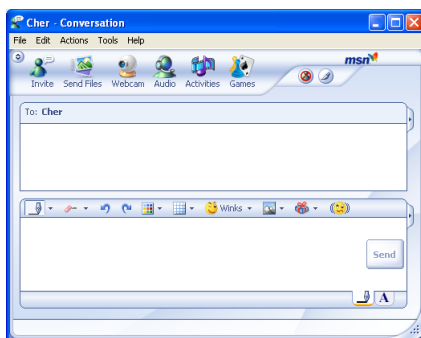
No matter what characters you write, just set the recognition engine to determine whether the output is shown as Traditional or Simplified Chinese. See 4.6.1 for more details.

3.8.4 Using Presenter Pen in MSN Messenger

Note: This required MSN Messenger version 6.1 or higher version.

After you have signed in to the MSN Messenger, double-click the person's name to display the conversation box. Below this conversation box, there are two modes for you to select: [Handwrite]  and [Type] . You can switch between the input modes as you like.

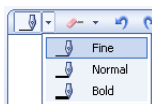
Note: If you can't activate the New Pen mode, please visit the Microsoft website and install the necessary handwriting.



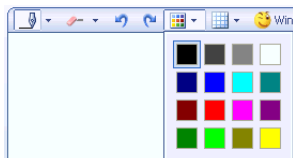
In the [Handwrite mode], you can adjust the font size and the font color. When done, you can write on the tablet and the words will appear in your selected font size and color.

If you want to clear the words you have written, you can use the eraser shown in the scroll bar.

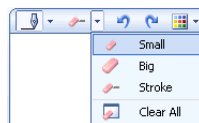
After you have input your message, click [send] to send your handwritten message.



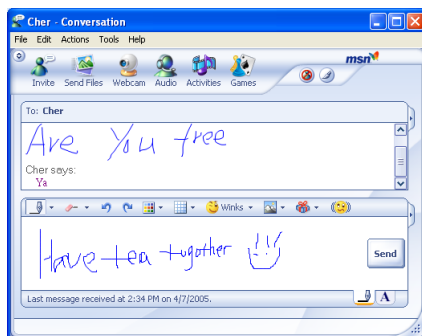
set ink width



set ink color



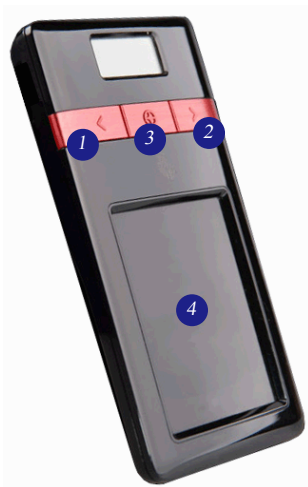
set the rubber



Chapter 4 Presenter Mode

The Presenter Pen supports MS PowerPoint presentation application to make your presentation more professional. You may switch the [Presenter/Handwriting mode] switch upward to the the [Presenter mode] and use the following functions to help your presentation.

Front Side



Right Side



1. Left button: Show the previous page.
2. Right button: Show the next page.
3. Laser point button: Press the laser point button to highlight the main points in your presentation with the red laser light.
4. Mouse area: When pull the stylus pen out, you can use this area as a mouse pad to move your cursor, click and double click the mouse area.

Note: If you do not need to use the mouse function during the presentation, please do not pull the stylus pen out to avoid activating the mouse in the dark.

5. Timer setting button: Let you set the presentation time. Press it once, add 5 minutes and so on. After 5 second of setting, the Presenter Pen will start to count down. The LCD monitor will display the remaining time, and alarm you at 2, 5 minutes left and time is up with the gentle red flash.

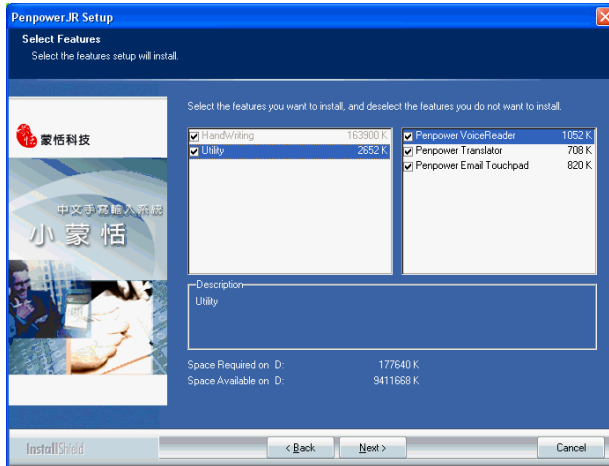


Tip: Press and hold the [Timer setting button] for a while, you can reset the timer.

6. Black screen button: During the presentation, press the black screen button to display the black screen. Press it again to display the previous screen.
7. Presenter/Handwriting mode switch: Switch upward to the the [Presenter mode]. Switch downward to the the [Handwriting mode].

Chapter 5 Assistant Tools

If you selected the [Typical] or [Custom] type during the installation, you will find Penpower VoiceReader, Penpower Translator and Penpower Input Tool. In the Custom type, you could select the functions to install.






5.1 Penpower Voice Reader


The Penpower Voice Reader utilizes a state of the art text-to-speech technology, it will read in fluent Mandarin or Cantonese of any articles. You can use it as a tool for fast proof-reading or in teaching the correct Mandarin/Cantonese pronunciation.

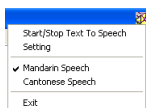
5.1.1 Use Penpower Voice Reader



1. Run [Start/All Programs/Presenter Pen/Penpower VoiceReader].

Note: Before running the Penpower Input Tools, make sure the Presenter Pen has been started. Otherwise you'll be asked to start the Presenter Pen first.

2. When it starts up, there will be an icon on/off  button on the top right corner of your application, such as Word. You can select Mandarin or Cantonese.


3. When you choose a paragraph, click the  button and select [Start/Stop Text Speech], the selected paragraph will be read out. Check your speaker if there is no sound.



4. During reading, click , and select [Start/Stop Text Speech], it will stop reading.
5. Click , select [Exit] to exit the Penpower Voice Reader.



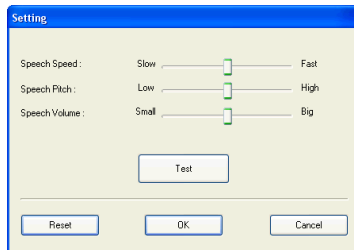
5.1.2 Reading Setting

1. Click , select [Setting], the [Setting window] will appear.

Speech Speed: Adjust speech speed.

Speech Pitch: Adjust speech tone level.

Speech Volume: Adjust speech volume.



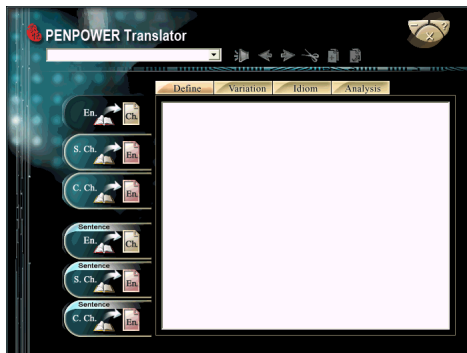


5.2 Penpower Translator

The Penpower Translator provides Chinese to English and English to Chinese word and sentence translation.

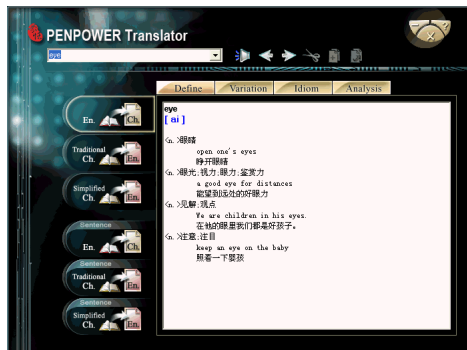
Run [Start/All Programs/Presenter Pen/Penpower Translator].

Note: Before running the Penpower Input Tools, make sure the Presenter Pen has been started. Otherwise you'll be asked to start the Presenter Pen first.



5.2.1 English Words

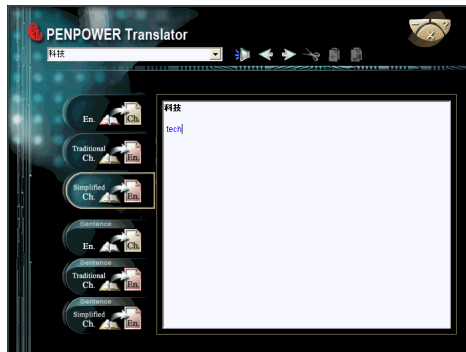
1. Click the button [En. -> Ch.] on the left side of window.
2. In the input field on the upper left corner, enter an English word, press [Enter] key to see the Chinese translation.
3. Choose different tabs on the top of the translation field to look up the Define, Variation, Idiom and Analysis of the English word.




5.2.2 Chinese Characters

1. Click the [Simplified.Ch. -> En.] button on the left side window.
2. In the input field on the upper left corner, input a Chinese character or phrase, and then press [Enter] key to see the English translation.

Tip: If the Chinese character you want to look up is Traditional Chinese, please select the [Traditional Ch. -> En.] translation option.



5.2.3 English Chinese Sentence Translation


1. Click the [Sentence En. -> Ch.] button on the left side of the window.
2. In the upper input frame, input English sentences or an article, click the  button to translate. The translation results are shown on the lower frame.

Tip: When you translate a whole article, make sure there's a period mark at the end of each sentence. It will increase the accuracy of translation.





5.2.4 Chinese English Sentence Translation


1. Click the [Sentence Simplified Ch. -> En.] on the left side of window.
2. In the upper input frame, input Chinese sentences or an article, click the  button to translate. The translation results are shown on the lower frame.

Tip: If the Chinese sentence you wish to look up is Traditional Chinese, please select the [Sentence Traditional Ch. -> En.] translation option.



5.2.5 Button Functions



Speech: Hear the pronunciation of the single character/word. If you use [Sentence Translation], click on the upper or lower frame, and then click the  button to hear pronunciations of the whole sentences or the article.



Previous/Next: Look up the definitions for nearby words.



Cut: Cut the selected content. (Only available when translating an entire sentence)



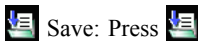
Copy: Copy the selected content.




Paste: Paste the cut or copied content. (Only available when translating an entire sentence)

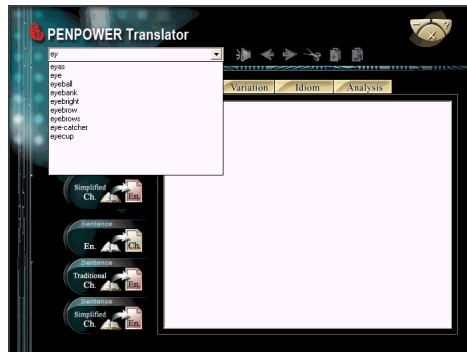


Delete: Delete all input and translation content. (Only available when translating an entire sentence)



Save: Press  button to open the [Save as...] dialogue window. This will save all of the input and translated content into a new *.txt format file. (Only available when translating an entire sentence.)

Tip: When typing a single word, a list of possible word will show up during the typing. You can use the direction keys to select that word as the input, and then press Enter key to look up that word.



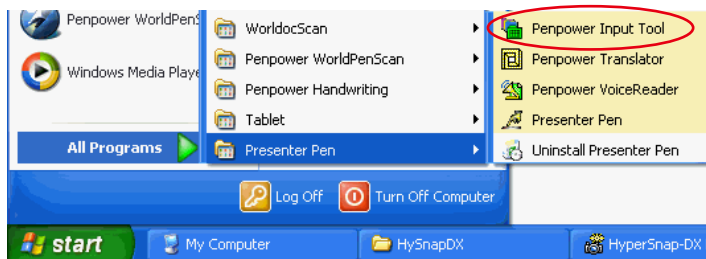



5.3 Penpower Input Tool

The new Handwriting mode provides Penpower Input Tool. It contains four input methods: Phonetic, Keyboard, Dictionary, and Symbol.

Run [Start/All Programs/Presenter Pen/Penpower Input Tool].

Note: Before running the Penpower Input Tools, make sure the Presenter Pen has been started. Otherwise you'll be asked to start the Presenter Pen first.



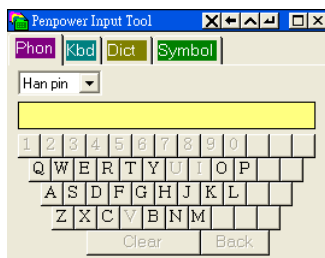
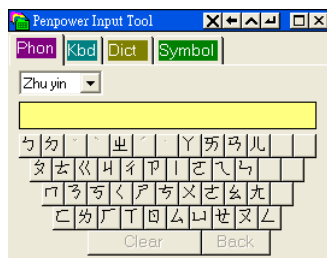
Tip: The writing-pad adopts shrink-expand user interface. It would expand into normal size when you hover your mouse over it. Otherwise it appears as a small icon  to avoid taking up space on the screen.

5.3.1 Phonetic Input Tool

There are three types of phonetic inputs provided by the Presenter Pen: Zhu yin, Yue Pin and Han pin. You can also create your own phonetic input.

How to Use

1. Select a phonetic input: Han pin, Yue Pin or Zhu yin.
2. Click the screen keyboard buttons one by one in order.
3. The converted candidate character is listed in the text buffer.



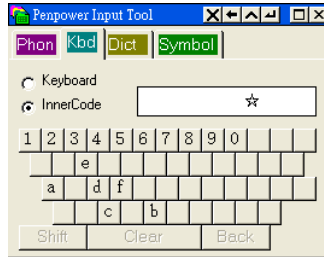
5.3.2 Keyboard Input Tool

Keyboard

Simulated software keyboard.

Inner Code

Select four keys of inner code to input a character or symbol. e.g. The inner code of [☆] in hexadecimal is A1B8. Click A 1 B 8 in that order in the screen to display [☆].

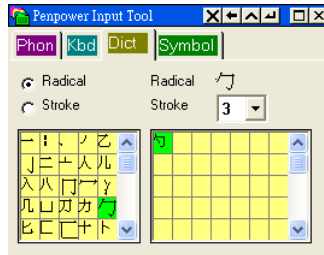


5.3.3 Dictionary Input Tool

Query by radical

For example, when you want to input the character 『明』, you can

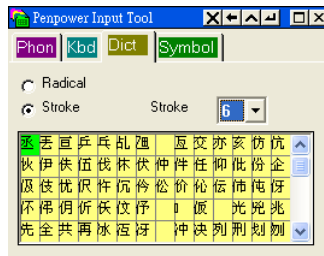
1. Choose the stroke of the radical: 4.
2. Select the radical 『日』 from the candidates.
3. Choose the total strokes of 『明』: 8.
4. Select your target character: 『明』.



Query by stroke

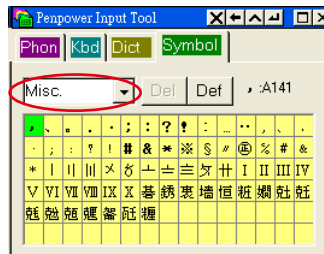
For example, when you want to input the character 『明』, you can

1. Choose the total strokes of 『明』: 8.
2. Select your target character: 『明』.



5.3.4 Symbol Input Tool

Special symbols are displayed on several tables. Select a table and click the desired symbol. You can customize the symbol tables.



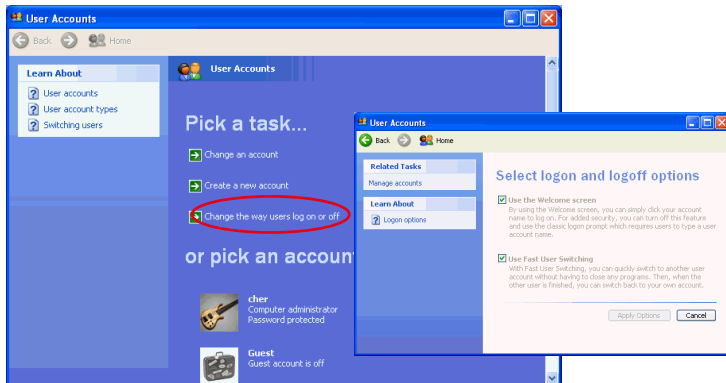


Chapter 6 Fast User Switching

The Presenter Pen supports [Fast User Switching] when you have more than one user account in Windows OS. [Fast User Switching] allows all users to use Presenter Pen without reinstalling on each account.

For example, to activate [Fast User Switching] from Windows XP, click the [Start] button, select [Settings] then click [Control Panel]. Select [User Accounts] and then click [Change the way users log on or off]. Select [Use the Welcome screen] and [Use Fast User Switching] and then click [Apply] Options.

The Presenter Pen will work now no matter which account is used to log in.





Penpower Presenter Pen V7.2 User Manual

Penpower Technology LTD.

Release: August, 2010