

# **Global Penpower Jr. User Manual**

Version: V7.2

Release: July, 2010

Edition: 1

# **Penpower Technology Ltd.,**

## **Software User License Agreement**

You are licensed to legally use this software program (“the Software”) by Penpower Technology Ltd (“Penpower”) under this license agreement (“The Agreement”). If you do not agree with any of the provisions in this Agreement, please do not install, copy or use the Software. By using the Software, you are deemed to fully understand and accept the provisions of this Agreement.

### **1. Intellectual Property**

All intellectual property rights in the Software, together with all information and documents included in the packaging for the Software (including but not limited to copyrights), are property of Penpower, and are protected by relevant laws and regulations.

### **2. License to Use**

You are authorized to use the Software on one (1) single computer only. You may not use the Software on any other machines other than the said single computer.

### **3. Authority to Copy**

The Software and all documents included with the Software, and copyright thereof, are property of Penpower. You are licensed to make one (1) copy of the Software for your personal backup purposes. All other acts of copying are strictly prohibited.

You may not sell, lease, disassemble, reverse engineer, copy, translate, adapt or derive the Software, or obtain the source code of the Software by any other means. You may not use the Software for any purposes other than those permitted under this Agreement.

### **4. Business Users**

If you need to install or use the Software on more than one (1) computer, please contact Penpower or our local distributor to purchase a license for the additional use.

### **5. Liability**

You agree to indemnify Penpower against all losses, costs, debts, settlement payments or other expenses (including but not limited to attorneys fees) arising from your breach of this Agreement, and you agree to compensate Penpower for all of the abovementioned damages.

### **6. No Warranty**

Effectiveness of a packaged software in handling information is closely related to

its software and hardware environment. The Software is published following careful development and product testing by Penpower, but Penpower is not able to conduct tests based on all possible combinations of software and hardware environment. Therefore, Penpower is unable to promise nor warrant that there will be absolutely no risk of loss or damage of information, or any other kind of loss, during installation and/or execution of the Software. You must be fully aware of your risks in using the Software.

Penpower will provide you with the Software and support services in respect of the Software to the maximum extent permitted by law. However, Penpower does not warrant that the Software and information included in the package of the Software contain no defects or errors. Penpower is not liable for any indirect, special or incidental loss arising from the Software, including but not limited to loss of profits, damage to business reputation, cessation of work, hardware malfunction or damage, or any other commercial damage or loss arising from commercial use of the Software.

## **7. Limitation of Liability and Damages**

The maximum amount of compensation payable by Penpower, in respect of any damage incurred by you for any reason under this Agreement, is limited to the amount you have already paid to Penpower in respect of the Software.

Under no circumstances will Penpower be held liable for the possibility of loss, notwithstanding Penpower may be aware of the possibility of such loss.

## **8. Prohibition Against Sublicense**

You are prohibited to assign the license in respect of the Software granted to you under this Agreement, or to grant a sublicense to another person.

## **9. Jurisdiction**

With regards to any disputes arising from this Agreement, Penpower and you agree that the court having jurisdiction over the business location of Penpower will be the court in the first instance.

## **10. Miscellaneous**

In the event that any provision of this Agreement is found to be invalid at law, such invalidity will not affect the validity of any other provisions, or the legal enforceability of such other provisions.

In the event that the Software cannot be executed under conditions of normal use, due to any damage to the original disk/s, Penpower will replace the disk/s free of charge.

# Contents

<b>Chapter 1 Product Overview .....</b>	<b>1 - 1</b>
1.1 Hardware Introduction .....	1 - 1
1.2 Product Feature.....	1 - 2
<b>Chapter 2 Installation.....</b>	<b>2 - 1</b>
2.1 System Requirement.....	2 - 1
2.2 Handwriting Software Installation .....	2 - 1
2.3 USB Human Interface Device Installation.....	2 - 6
2.4 Registration .....	2 - 6
<b>Chapter 3 Hardware Operation .....</b>	<b>3 - 1</b>
3.1 Calibration .....	3 - 1
3.2 Touch-Pad Operation.....	3 - 2
<b>Chapter 4 New Handwriting/Mouse Mode.....</b>	<b>4 - 1</b>
4.1 Run Penpower Jr. Handwriting System.....	4 - 1
4.2 Switching Modes.....	4 - 2
4.3 New Handwriting/Mouse Mode.....	4 - 3
4.3.1 New Handwriting Mode Toolbar .....	4 - 3
4.3.2 Full Screen Handwriting Mode.....	4 - 5
4.3.3 How to Write.....	4 - 6
4.3.4 How to quickly fix errors, enter phrases and symbols.....	4 - 7
4.4 Balloon UI .....	4 - 8
4.4.1 Phrase Correction .....	4 - 9
4.4.2 Artificial Intelligence .....	4 - 10
4.4.3 Split.....	4 - 12

4.4.4 Merge .....	4-13
4.4.5 Homophone.....	4-14
4.4.6 Related word.....	4-15
4.5 New Mouse Mode .....	4-16
4.5.1 Artificial Intelligence .....	4-16
4.5.2 Learning String .....	4-16
4.5.3 Update Phrase Database.....	4-18
4.5.4 Signature .....	4-21
4.5.5 On-Line Translator.....	4-23
4.5.6 Input words by Related Phrase .....	4-25
4.6 Penpower Input Tool .....	4-26
4.7 Setting.....	4-27
4.7.1 Recognition Setting.....	4-27
4.7.2 General Setting .....	4-29
4.7.3 Writing Setting.....	4-30
4.7.4 Update Method Setting .....	4-31
4.8 Writing Application .....	4-32
4.8.1 Switch Version .....	4-32
4.8.2 Gesture .....	4-33
4.8.3 Mix Traditional and Simplified Writing .....	4-33
4.8.4 Using Penpower Jr. in MSN Messenger .....	4-34

## **Chapter 5 Traditional Mode ..... 5-1**

5.1 Run Penpower Jr. Handwriting System.....	5-1
5.2 Writing Mode .....	5-1
5.3 Full Screen Handwriting .....	5-2

5.3.1 Balloon UI.....	5-2
5.4 Writing-Pad .....	5-3
5.4.1 Write Input Tool.....	5-3
5.4.2 Phonetic Input Tool.....	5-4
5.4.3 Keyboard Input Tool .....	5-4
5.4.4 Dictionary Input Tool.....	5-5
5.4.5 Symbol Input Tool .....	5-5
5.5 Phrase .....	5-6
5.5.1 Use Phurase to input words .....	5-6
5.5.2 Update Phrase Database.....	5-7
5.6 Other Functions .....	5-8
5.6.1 Learning Tool.....	5-8
5.6.2 Signature .....	5-8
5.6.3 On-Line Translator.....	5-8
5.6.4 Setting.....	5-9
5.6.5 Switch Version .....	5-10
5.6.6 Gesture.....	5-10
5.6.7 Mix Traditional and Simplified Writing .....	5-10
5.6.8 Using Penpower Jr. in MSN Messenger .....	5-10
<b>Chapter 6 Assistant Tools .....</b>	<b>6-1</b>
6.1 Penpower Voice Reader.....	6-2
6.1.1 Use Penpower Voice Reader .....	6-2
6.1.2 Reading Setting.....	6-3
6.2 Penpower Translator.....	6-4
6.2.1 English Words.....	6-5

6.2.2 Chinese Characters .....	6-6
6.2.3 English Chinese Article Translator .....	6-7
6.2.4 Chinese English Article Translator .....	6-8
6.3 Penpower Input Tool .....	6-10
6.3.1 Phonetic Input Tool.....	6-11
6.3.2 Keyboard Input Tool .....	6-11
6.3.3 Dictionary Input Tool.....	6-12
6.3.4 Symbol Input Tool .....	6-12
6.4 Chinese Covert Tool .....	6-13
6.5 Penpower E-mail Touchpad .....	6-14
6.5.1 Setting .....	6-14
6.5.2 Accounts Management.....	6-15
6.5.3 Email Address filter .....	6-15
6.5.4 Connection .....	6-16
6.5.5 Check email manually .....	6-16
6.5.6 Device Test.....	6-16
<b>Chapter 7 Fast User Switching .....</b>	<b>7-1</b>

There may be newer versions of the software that was released during or after this product's manufacturing date. If the content in the User Manual differs from the on-screen interface, please follow the instructions on the on-screen interface instead of the User Manual.

# **Penpower Technology Ltd.**

## **Software User License Agreement**

You are licensed to legally use this software program (“the Software”) by Penpower Technology Ltd (“Penpower”) under this license agreement (“The Agreement”). If you do not agree with any of the provisions in this Agreement, please do not install, copy or use the Software. By using the Software, you are deemed to fully understand and accept the provisions of this Agreement.

### **1. Intellectual Property**

All intellectual property rights in the Software, together with all information and documents included in the packaging for the Software (including but not limited to copyrights), are property of Penpower, and are protected by relevant laws and regulations.

### **2. License to Use**

You are authorized to use the Software on one (1) single computer only. You may not use the Software on any other machines other than the said single computer.

### **3. Authority to Copy**

The Software and all documents included with the Software, and copyright thereof, are property of Penpower. You are licensed to make one (1) copy of the Software for your personal backup purposes. All other acts of copying are strictly prohibited.

You may not sell, lease, disassemble, reverse engineer, copy, translate, adapt or derive the Software, or obtain the source code of the Software by any other means. You may not use the Software for any purposes other than those permitted under this Agreement.

### **4. Business Users**

If you need to install or use the Software on more than one (1) computer, please contact Penpower or our local distributor to purchase a license for the additional use.

### **5. Liability**

You agree to indemnify Penpower against all losses, costs, debts, settlement payments or other expenses (including but not limited to attorneys fees) arising from your breach of this Agreement, and you agree to compensate Penpower for all of the abovementioned damages.

### **6. No Warranty**

Effectiveness of a packaged software in handling information is closely related to its software and hardware environment. The Software is published following careful development and product testing by Penpower, but Penpower is not able to conduct tests based on all possible combinations of software and hardware environment. Therefore, Penpower is unable to promise nor warrant that there will be absolutely no risk of loss or damage of



information, or any other kind of loss, during installation and/or execution of the Software. You must be fully aware of your risks in using the Software.

Penpower will provide you with the Software and support services in respect of the Software to the maximum extent permitted by law. However, Penpower does not warrant that the Software and information included in the package of the Software contain no defects or errors. Penpower is not liable for any indirect, special or incidental loss arising from the Software, including but not limited to loss of profits, damage to business reputation, cessation of work, hardware malfunction or damage, or any other commercial damage or loss arising from commercial use of the Software.

#### **7. Limitation of Liability and Damages**

The maximum amount of compensation payable by Penpower, in respect of any damage incurred by you for any reason under this Agreement, is limited to the amount you have already paid to Penpower in respect of the Software.

Under no circumstances will Penpower be held liable for the possibility of loss, notwithstanding Penpower may be aware of the possibility of such loss.

#### **8. Prohibition Against Sublicense**

You are prohibited to assign the license in respect of the Software granted to you under this Agreement, or to grant a sublicense to another person.

#### **9. Jurisdiction**

With regards to any disputes arising from this Agreement, Penpower and you agree that the court having jurisdiction over the business location of Penpower will be the court in the first instance.

#### **10. Miscellaneous**

In the event that any provision of this Agreement is found to be invalid at law, such invalidity will not affect the validity of any other provisions, or the legal enforceability of such other provisions.

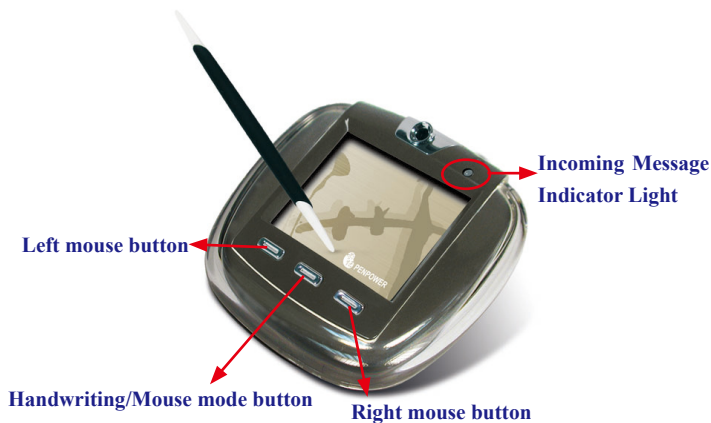
In the event that the Software cannot be executed under conditions of normal use, due to any damage to the original disk/s, Penpower will replace the disk/s free of charge.

# Chapter 1 Product Overview

## 1.1 Hardware Introduction

The eye-catching appearance makes this the new choice for the young and trendy. Supports incoming message alerts so when an e-mail is received it plays music and flashes.

**Active Pad Area: 2x1.5"**





## **1.2 Product Feature**

### **3-in-one user interface**

Provide English, traditional Chinese and simplified Chinese user interface with handwriting recognition input for Chinese, English and Japanese hiragana and katakana.

### **Supports Traditional and Simplified Chinese**

The recognition kernel is based on Unicode so you can input both Traditional and Simplified Chinese with ease.

### **Full screen free writing**

You can handwrite several words at one time before recognition with the visual user interface. Just point the cursor on a word and the hidden Balloon UI appears.

### **Artificial Intelligence recognition kernel**

Highly adaptable to your handwriting and can be used as a personal handwriting system.

### **Useful auxiliary functions**

Provide many useful functions, such as related phrase, related word, special symbol table, homophone, dictionary, learning string, color inking and sound effect...etc, to help inputting easier.

### **Word-Learning Wizard**

Word-learning wizard makes it easy input common-used sentences and manage learning dictionary.

### **Smart Handwriting/Mouse Mode**

This brand new Penpower mouse is easier to use and more intuitive. Additional symbols and symbol shortcuts are also provided for your convenience.

### **Inking on MSN Messenger**

If you have MSN Messenger 6.1 or above installed, you can transmit handwriting and hand-drawn graphics on MSN Messenger for that extra personal touch.

### **Fast User Switching**

Windows Fast User Switching is supported so every user can have access to their personal settings.

### **Chinese-English Translation**

Online dictionary with real-time Chinese-English translation.



## Chapter 2 Installation

### 2.1 System Requirement

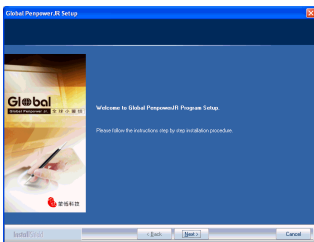
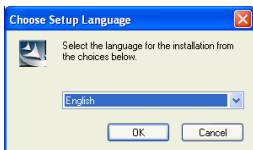
1. Intel Pentium processor or compatible
2. 128MB RAM
3. 150MB disk space
4. Windows 7/Vista/XP
5. USB Port

### 2.2 Handwriting Software Installation

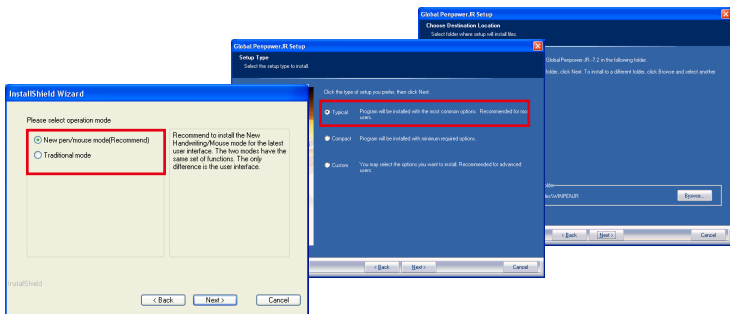
1. Please insert CD-ROM disc into the CD-ROM drive and the system will automatically launch setup.exe. Select the [Global Penpower Jr.] option.



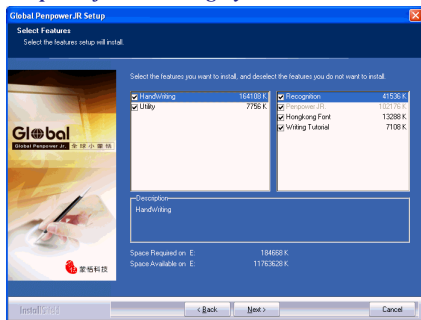
- Please select the language version you wish to install then click [OK]. Please close all Penpower applications to ensure that the install/repair process will run properly. Follow the instructions on screen and carry out the installation process as directed.



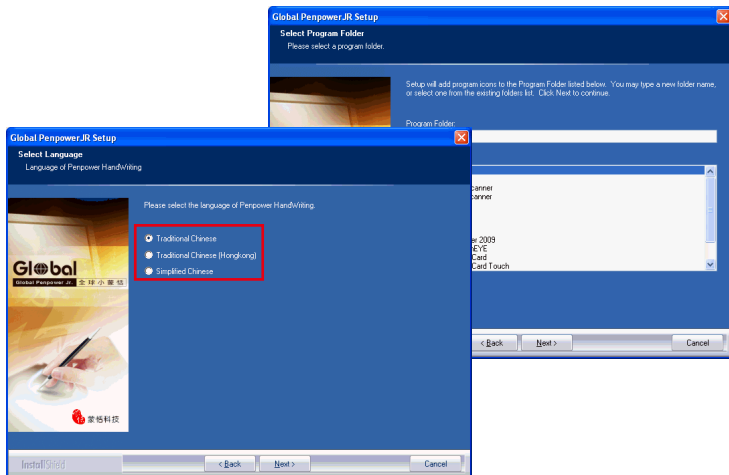
- Select the installation folder and type. Typical installation is recommended. Besides, Penpower Jr. offers two handwriting modes: Traditional and New Handwriting/Mouse. We recommend that you choose to install the New Handwriting/Mouse mode. If you are an existing Penpower Junior user and prefer to use the Traditional mode then you may choose to install the Traditional mode instead. The two modes only differ in their interface but have the same set of functions.



**Note:** If you choose custom installation type, you can check every single function to install, except the functions in grey color.

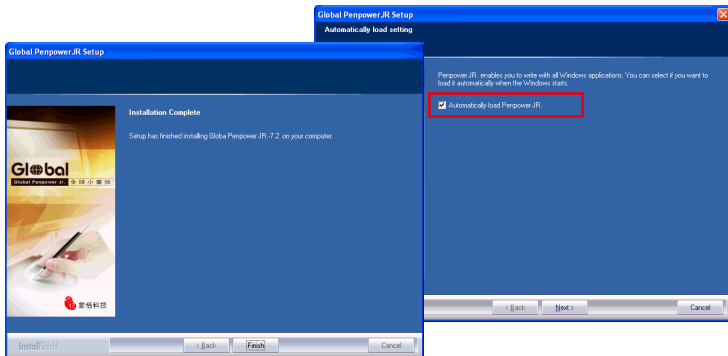


4. Click [Next] to use the default folder name. Select the default Chinese Character and click [Next].

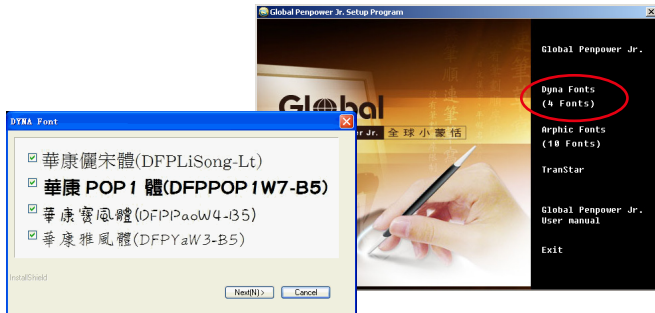




- Check [Automatically load Penpower Jr.] if you wish to automatically run Penpower Jr. when the computer starts. Click [Finish] to complete the installation.



- Global Penpower Jr. offers various Chinese fonts. You can install DYNA Fonts from the main installation menu. Select the fonts you desire to install, then follow the instruction to install.



7. Additionally Global Penpower Jr. offers 10 sets of Arphic Fonts including 5 sets of traditional Chinese fonts and 5 sets of simplified Chinese fonts. Please select the fonts you desire to install, then follow the instruction to install.



8. Global Penpower Jr. provides English and Chinese translation software -TranStar. You may install it from the main menu.





## 2.3 USB Human Interface Device Installation

Connect the touch-pad with USB port on computer.



## 2.4 Registration

System will ask you to register for warranty at your first run. Please press **Register now** to start registration or click **Register later** to skip this procedure. You can register later on from [**About**]/[**Register**]. If you want to choose **Register later** and do not need to be reminded again, you can check **Don't show this page at startup**.

**Register reminder**  
Please register your product at [www.penpower.net/reg.html](http://www.penpower.net/reg.html) to ensure warranty service.  

Register now

Register later

  
☐ Don't show this page at startup

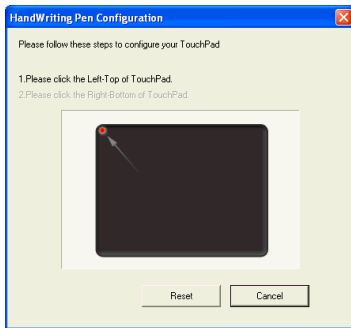
## Chapter 3 Hardware Operation

### 3.1 Calibration

After finishing installation, you should be able to hand write right away. If you found that the inking you wrote is not centered on screen, you need to calibrate your touch-pad to remap the active area.

1. Click Penpower Jr. icon  from the top-left corner and select calibration from the menu.
2. Please click on the upper-left corner spot and the lower-right corner spot of touch pad with the pen.

**Tip :** *After calibration, the new configuration would take effect immediately. You do not need reboot or reload Penpower Jr. handwriting system.*



**Note:** *When calibrating the Penpower miniCard please orient the touch pad so it's in landscape mode.*



## 3.2 Touch-Pad Operation

1. Moving: Put the pen on the touch-pad, and then move it on the panel gently.
2. Click: Hit the touch-pad once.
3. Dragging: Hit the touch-pad twice quickly, and move the pen on the panel while second pen down.
4. Double click: Hit the touch-pad twice quickly.
5. There are three buttons on the touch-pad as normal mouse functionality, but the middle button is defined to toggle pen mode and mouse mode. The left button would be revised for error correction on pen mode state. While you press the left button once each time, the latest recognized result would be replaced with the next candidate word. It lets you correct the result quickly without switching to mouse mode.



**Tip :** *The three buttons are not on a line for some touch-pad. The alone one is the middle button.*

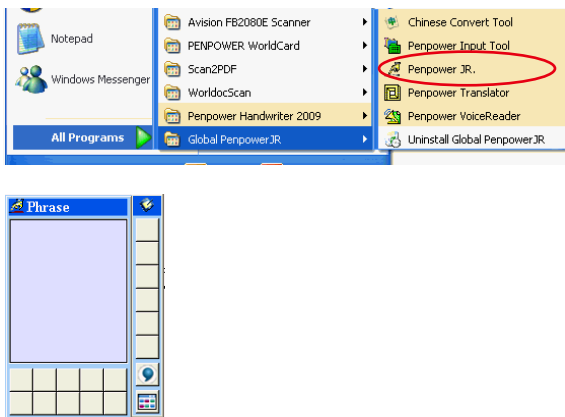
**Tip :** *You can click the mode button on the window to switch mouse mode and pen mode.*



## Chapter 4 New Handwriting/Mouse Mode

### 4.1 Run Penpower Jr. Handwriting System



If you installed “New Handwriting/Mouse Mode“ and run “Start/All Programs/PenpowerJr/Penpower Jr.”, you will see the New Handwriting window as following:




## 4.2 Switching Modes

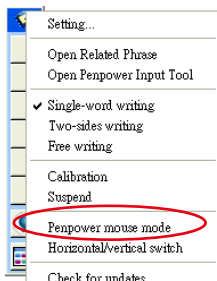
Penpower Jr. has the Handwriting and Mouse modes. The Handwriting mode provides writing and recognition functions. You can select the candidates, related words, phrases and symbols via mouse.

In Mouse mode, you can use the writing pad and pen as the mouse to select the candidates, related words, phrases and symbols. It also provides handwriting inking review, and some function buttons such as AI, learning tool, phrase, signature and on-line translator.

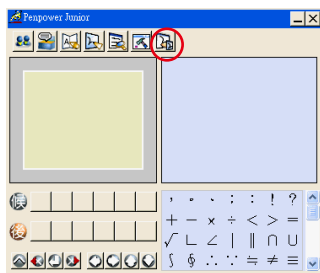
When Penpower Junior is launched for the first time it will start in the handwriting mode. Left mouse click on the “Menu” button  or right mouse click on the toolbar  to open the options menu. Select “Penpower mouse mode” to switch to the mouse mode.

In mouse mode, click on the “Switch” button  to switch back to the handwriting mode.

***Tip: The middle function button on the Penpower Junior touch pad allows fast switching between the handwriting and mouse modes.***



**Handwriting mode**







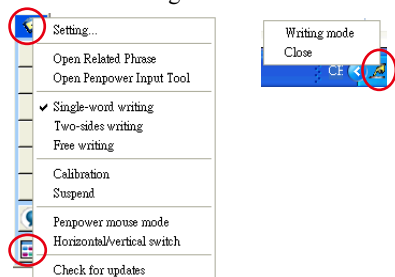
**Mouse mode**


## 4.3 New Handwriting/Mouse Mode

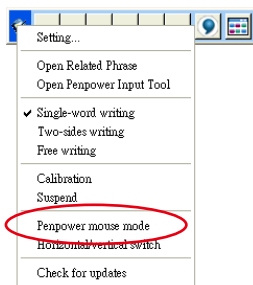
Penpower Jr. has the Handwriting and Mouse modes. The following will explain the new Handwriting mode and the Balloon UI.

### 4.3.1 New Handwriting Mode Toolbar

When run Penpower Jr., the vertical new handwriting mode toolbar will appear. You can write words on the handwriting pad to input words. Right click the mouse on the  or click menu  to open the menu. Double click  to close the Handwriting toolbar temporarily. Click “Handwriting mode”  to open the Handwriting toolbar.



The new handwriting mode provides vertical and horizontal layout of the toolbar. Click ‘menu’ button  to select the layout of the toolbar.



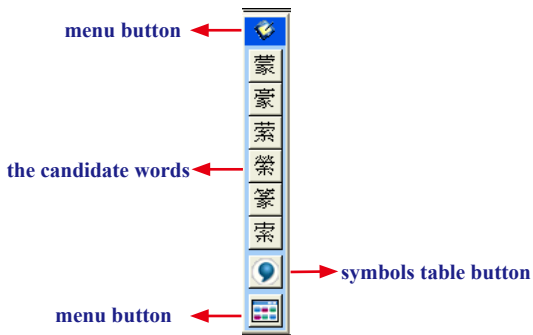
**Horizontal Switch**





The candidate area of the Handwriting mode provides you to promptly correct the recognized words, for example when you wrote ‘蒙’, and it recognized to ‘豪’, you can select ‘蒙’ from the candidate area via the mouse.

Click the symbols table button  via the mouse to open the symbols table and enter the corresponding punctuation symbol.



### 4.3.2 Full Screen Handwriting Mode

There are three different options of full screen mode in the main menu.

#### Single-word writing

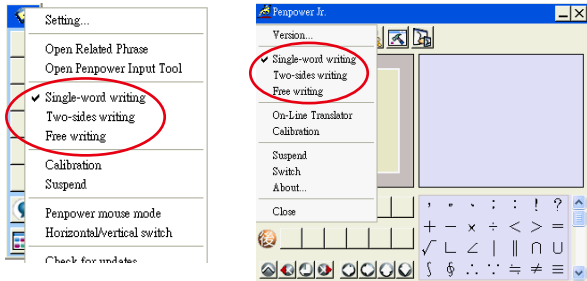
It is allowed to handwrite one word only at one time. You can not handwrite the next word until the recognition result of current word has been finished.

#### Two-sides writing

After the first stroke is written, one vertical line would be displayed on the center of screen. All the strokes written on the same side would be considered as part of one word. When a new stroke is crossed to the other side, it means that the last word is finished and the next word start to write.

#### Free writing

You can handwrite multiple characters before recognition at one time. Forty one characters at most is allowed. It permits left-to-right, or top-to-bottom free writing order. Remember to keep adequate distance between two contiguous words when you write. It affects the result of character segmentation.





### 4.3.3 How to Write

On Free writing mode, it's better to keep strokes of the same word closed, and keep not to overlap between words when you write. You need to finish writing every strokes of one word.

#### Right example

Write three words of 『明日月』.



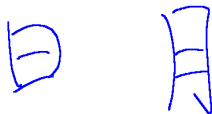
#### Wrong example 1

Overlap between two words. All the strokes may be recognized as one word.



#### Wrong example 2


The two parts of one word are written far away from each other. All the strokes may be segmented into two words.



#### Auto Phrase Correction

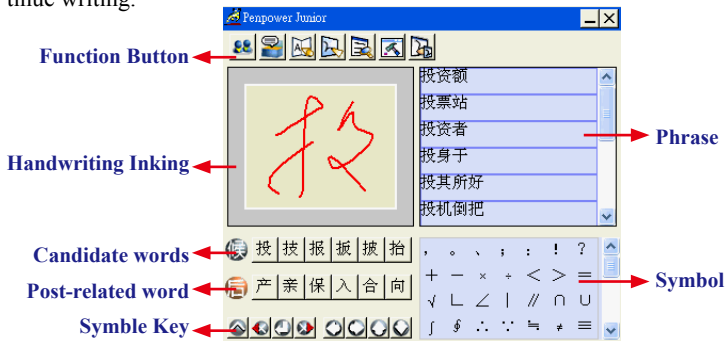
The system automatically proofreads on your writing content to improve the recognition rate. For example, when you continuously write 『天下太平』 (peace on the earth) four characters, but the character 『天』 is incorrectly written as 『夫』, so they become 『夫下太平』. Penpower uses its internal phrase dictionary to correctly recognize your intended result 『天下太平』.

### 4.3.4 How to quickly fix errors, enter phrases and symbols

When writing, candidate words based on the previous input will be displayed on the handwriting toolbar. Each press of the left function button on the touch pad will move the candidate words forward by one and also correct the results, allowing errors to be quickly fixed; the right function button allows the input of six habitual symbols. Alternatively, select a candidate word on the handwriting toolbar to correct it. Press the symbols table  button with the mouse to open the symbols table and enter the corresponding punctuation symbol.

You can also press the middle function button on the touch pad to switch to the mouse mode. In mouse mode, select the candidate word for the candidate words, post-related word, phrase or select symbol input.

For example: In handwriting mode, the input 『蒙恬科技』 had the character 『技』 misread as 『投』. Here you can press the middle function button on the touch pad to switch to the mouse mode then choose from the candidate words field 『技』 to correct the mistake. Once fixed, press the middle function button to switch back to the handwriting mode and continue writing.
















## 4.4 Balloon UI

This unique user interface let you edit recognition result freely in any application. The visual user interface is hidden transparently. When you want to correct some word, just move the cursor position on this word for a while. The function tool bar will be popped up there where the cursor is.

蒙恬气泡式介面




**Tip :** *You do not need to press any button after the cursor is moved on the word.*


In the function tool bar, click candidate words, AI button , homophone , pre-related word , post-related word  or phrase correction  to correct the result. click  button to see the raw inking. Click  button to see the tutor. Click  button to input punctuation symbol. Click  button to split one word. Click  button to merge the word with next word. The  button is for the Chinese-English translation function. Details are provided further on.

**Note:** *In New Handwriting/Mouse mode the balloon interface functions can only be operated with the computer mouse.*

**Note:** *Balloon Interface can be used in Office, IE, WordPad, but on 64 bit system, it can not be used in some software, ext. note.*

### 4.4.1 Phrase Correction

In Full Screen mode if you wish to enter a common phrase such as an idiom, if you aren't sure of how to write one of the characters you can substitute a similar sounding character instead. If you are not sure of the character's pronunciation either, choose any at random. When you have finished writing the phrase, select the uncertain character with the mouse then click on the phrase correction  button. The system will examine the four characters before or after this particular character to guess what you meant and make the change.

1. When entering an idiom in Full Screen mode such as 『拔苗助长』, if you are not sure of how to write the character 『拔』, you can enter the character 『一』 instead to input 『一苗助长』.
2. Move the mouse over the character 『一』 and pause for a moment to bring up the “Candidate Characters Window”. Click the phrase correction button  and the 『一』 character will be changed to 『拔』.


一苗助长

一苗助长



拔苗助长



3. If the phrase correction function came up with multiple candidate words, these will be shown in the candidate words window for you to choose from. For example, if the input was 『股份一限公司』 when you pause the mouse cursor over the 『一』 character, this will bring up the “Candidate Characters Window”. Pressing the phrase correction button  will bring up a list of all phrase correction candidate words for you to choose and make the correction with.

股份一限公司




#### 4.4.2 Artificial Intelligence

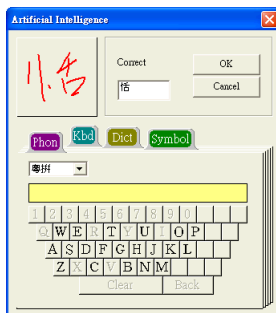
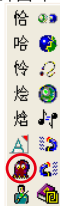
When you use candidate word or AI button to correct result, the system will modify its recognition database to adapt your personal writing style. This may improve the recognition rate.


1. Handwrite some words. The result would be sent in the caret.
2. e.g. 『恬』 is wrongly recognized as 『恰』.
3. Move the cursor on the word 『恰』 for a while to pop up the function tool bar.
4. Click the candidate word if the correct word is there.

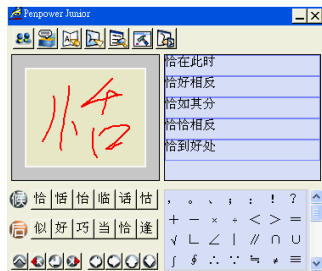
蒙恰科技

- Otherwise click the AI button  to open the AI correction dialog.
- Input the correct word 『恬』, and then click “OK”.
- You will see the wrong result 『怡』 is already updated as 『恬』. Your personal writing style of inking has also been learned.

蒙怡科技 蒙恬科技



**Tip:** You can also press the touch pad's middle button to switch to the mouse mode. If the correct word appears among the candidate words, simply click on it to make the change. If the correct word is not among the candidate words, press the “Penpower AI”  button to open the AI dialogue field to train the software.








### 4.4.3 Split

When two words are written too close, they may be recognized as single word. You can use split function to separate it into two words.

1. Handwrite four words 『日月星辰』 by free writing. The result would be sent in the caret.
2. If 『日』 and 『月』 is written too close, you may wrongly get three words of result 『明星辰』.
3. Move the cursor on the word 『明』 for a while to pop up the function tool bar.
4. Click  button to separate 『明』 into 『日』 and 『月』.

明星辰

明星辰|


明星辰|

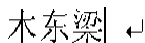


日月星辰|

### 4.4.4 Merge

When some strokes of one word are written far away from each other, they may be recognized as several words. You can use merge function to combined them into one word.

1. Handwrite two words 『栋梁』 by free writing. The result would be sent in the caret.
2. If 『木』 and 『东』 is written far away from each other, you may wrongly get three words of result 『木东梁』.
3. Move the cursor on the first word 『木』 for a while to pop up the function tool bar.
4. Click  button to merge 『木』 and 『东』 into 『栋』.




**Note :** Only two continuous words could be merged at one time.






## 4.4.5 Homophone

If you forget how to write some words, or they are too complicated to write, you can write down some other easy homophone to get the word that you would like to input. e.g. If you want to input the word 『豫』 :

1. Write any one homophone of 『豫』 , e.g. 『玉』 . The result would be sent in the caret.
2. Move the cursor on the first word 『玉』 for a while to pop up the function tool bar.
3. Click  button to open the window of homophone words.



4. You can Click  /  /  button to toggle other Zhu yin homophone/ Cantonese homophone/Hanyu homophone.
5. Click 『豫』 to replace 『玉』 .

豫

### 4.4.6 Related word


For any two contiguous words, the first one is the pre-related word of the second one. The second one is the post-related word of the first one.

e.g. 『科技』, 『科』 is the pre-related word of 『技』, and 『技』 is the post-related word of 『科』.

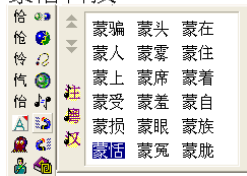
1. Handwrite some words. The result would be sent in the caret e.g. 『恬』 is wrongly recognized as 『恰』, and 『科』 is wrongly recognized as 『料』.

2. Move the cursor on the word 『恰』 for a while to pop up the function tool bar.


蒙恰料技

3. Click  button to open the window of pre-related phrases. If the correct phrase 『蒙恬』 is in the list, click it to update the result.

蒙恰料技



4. Move the cursor on the word 『料』 for a while to pop up the function tool bar.

5. Click  button to open the window of post-related phrases. If the correct phrase 『科技』 is in the list, click it to update the result.

蒙恰料技



6. You will see the wrong result 『蒙恰料技』 is already updated as 『蒙恬科技』 at last.


蒙恬科技



## 4.5 New Mouse Mode

The following will introduce the function buttons of Mouse mode, such as Artificial Intelligence, learning tool, phrase, signature, on-line translator and settings.

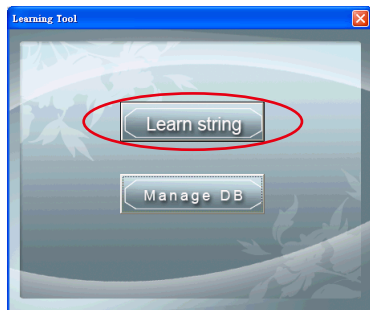
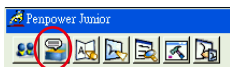
### 4.5.1 Artificial Intelligence

When writing a word in the New Handwriting mode, you can push the middle button for switching to the Mouse mode. You can click [Artificial Intelligence function]  to adapt your personal writing style. Please refer to 4.4.2 for details.

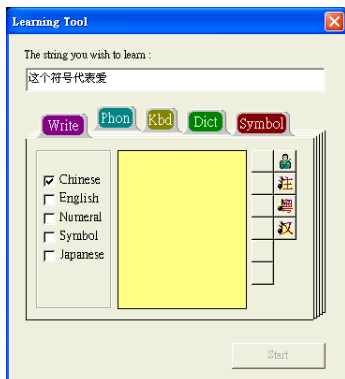
### 4.5.2 Learning String

A string is represented by an inking of symbol. So, you can handwrite the symbol anytime and the recognition engine will recognize it as the expanded string. It prevents you from redundant writing.

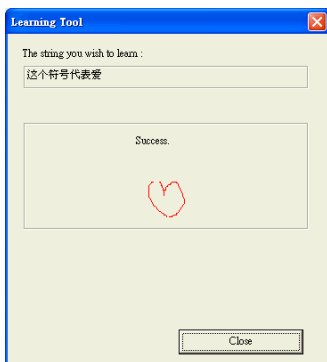
1. In Mouse mode, press the “Learning Tool” button to open the Learning Too Window. Select “Learn String” to open the “Learning Tool” screen.



2. Input the string you want to learn, then click on “Start”.

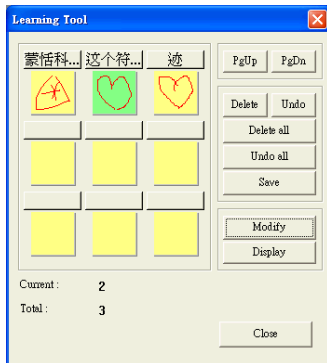
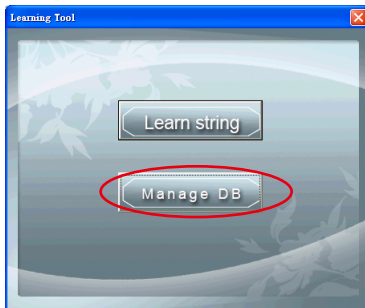


3. Draw a symbol twice to finish the learning.




**Note:** If the symbols you draw have too big differences, the learning will be failed. Please redraw the symbol.

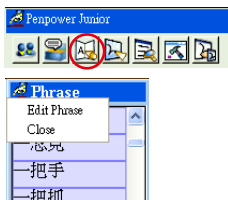
- Click “Manage DB” tag, You can browse the dynamical inking or modify the string you have ever learned here.

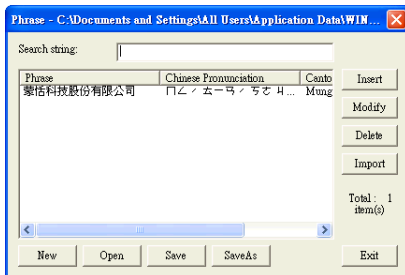


### 4.5.3 Update Phrase Database

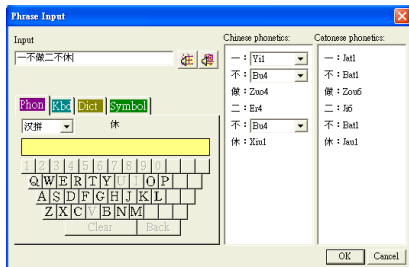
There are thousands upon thousands default phrases that you can use in the Penpower handwriting recognition. It also allows you to customize the phrase database to meet your needs.



- In Mouse mode press the “Phrase” button . Or in Handwriting mode select “Edit Phrase” from the Associations Dictionary and open the “phrase” dialogue.





2. Click “insert” to open the “Phrase Input” dialog. You can input a new phrase here. e.g. If you want to insert 『一不做二不休』 as a phrase, input 『一不做二不休』.



You need to update the phonetics on the right side. Click  /  button to hear their pronunciation and check if the one you choose is right.

**Note :** *The maximum length of one phrase is 200 word. In fact, the phonetics is only for VoiceReader to read text with right sound of phonetics. If you do not care, you can skip it.*

Click “OK” to finish insertion. Afterward, if you write 『一』, then 『一不做二不休』 would be displayed in the related phrase window. Just click it to input.





3. Select one phrase from the list, and then click “Modify” to update the phonetics of this phrase. Click “Delete” to delete this phrase from database.
4. In “Search string” field, you can only input part of a phrase to find this phrase quickly.
5. You can use “New”, “Open”, “Save”, “Save As” function to manage your phrase database (\*.yib).

***Note: Although you can create several phrase database, you can only choose one at one time.***

#### 6. Import file

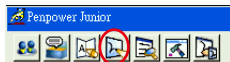
Click “Import” and select one phrase database (\*.yib) or text file to import it into current database.

The text file format must follow this rule - one phrase in each line. You can edit it by any editor, e.g. NotePad.

***Note: Every imported phrase would own phonetecs by default. Their phonetics may be wrong. You can modify them from phrase dialog.***

## 4.5.4 Signature

1. Move the caret to where the signature will be.
2. Open the Mouse mode and press the “Signature” button. The “Welcome to Penpower Signature Tool” screen will be shown and you are now in the signature mode.



3. In signature mode, the right button is defined to toggle pen mode and mouse mode. You must switch to pen mode before start to sign your signature. The left button is defined to change color.



: Change the color of inking.



: Change the thickness of inking.



: There three kind of pen style to change.



: Clear all.




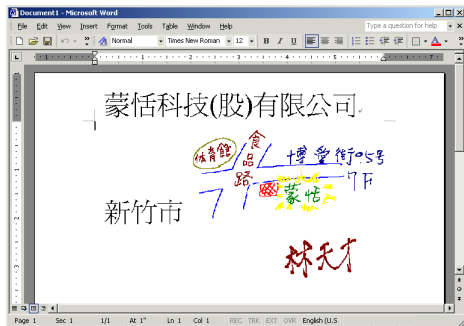
: Undo one stroke.




: redo one stroke.

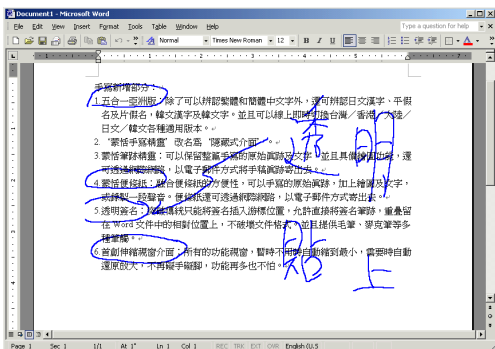
4. Click  button to cancel signature.

5. Click  button to insert your signature in the caret.



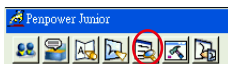
6. Click  button to overlap your transparent signature with MS Word or MS Excel document.

**Note:** You can use the transparent signature in the latest MS Word and Excel, but this function is not supported in MS Office 2007 or above. You may make notes and commentary by using transparent signature function.

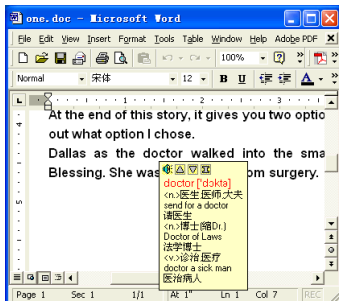
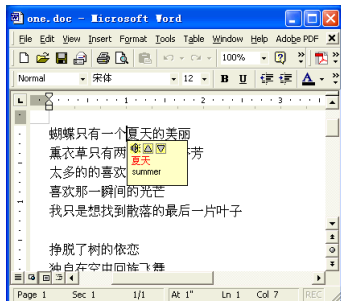






## 4.5.5 On-Line Translator

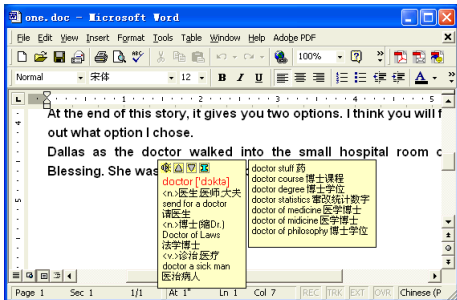
1. Open the Mouse mode and press the “On-Line Translator” button to open the On-Line Translator function. Press the button again to close the function.



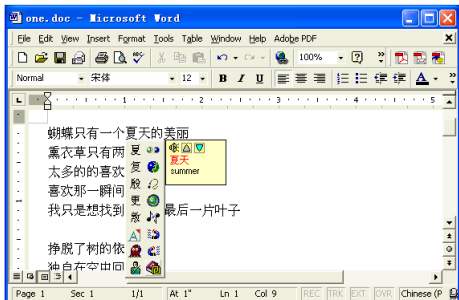
When reading English or Chinese articles, if you encounter unknown characters or phrases, move the cursor over the characters, and a translation window pops up to explain them for you.



When you move the cursor outside the interactive scope, the window will disappear. In the window, you can press the play  button or character /  or phrase explanation  buttons.



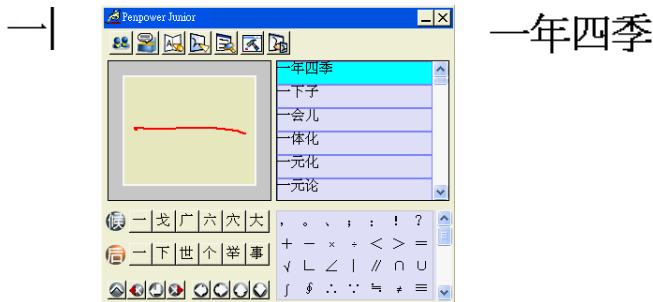
to look up a character's translation, select 



### 4.5.6 Input words by Related Phrase

Phrase function provides the related phrases for inputting phrases quickly.



1. Write down the first word of one phrase. e.g. If you want to input the phrase 『一年四季』, just write the first word 『一』.
2. Press the middle button on the touch pad to switch to the Mouse mode. All the phrases beginning with this word 『一』 will be listed on the phrase area of the Mouse mode.
3. Click the phrase or memorized word that you want to send it into the caret. e.g. 『一年四季』.

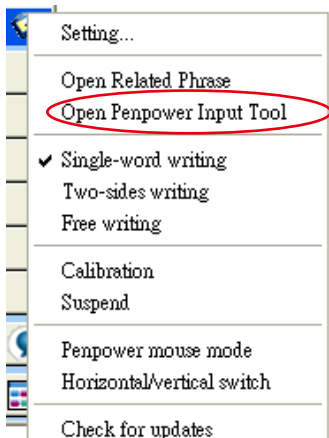




## 4.6 Penpower Input

### Tool

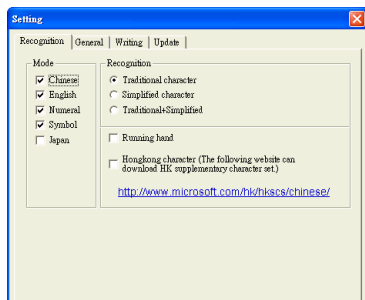
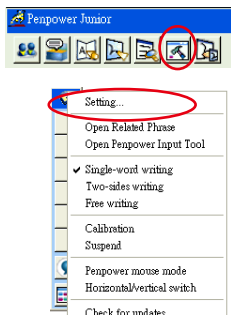
Penpower Junior provides four types of input tools: Phonetic, Keyboard, Dictionary and Symbol. Left click on the “Menu” button  or right click on the toolbar  to open the options menu. Select [ Open Penpower Input Tool ] to open [ Penpower Input Tool ].



*Please see Chapter 6.3 for more details.*

## 4.7 Setting

In Mouse mode click on the “Setting” button or in Handwriting mode choose the “Setting...” from the menu to open the settings page. You can configure the recognition engine, output format or writing inking here.



### 4.7.1 Recognition Setting

#### Mode

The recognition mode of Chinese, English, Numeral, Symbol and Japanese could be turned on/off individually. You could turn on several modes at the same time.

#### Recognition

1. Simplified character: All the results are simplified words. If you do not know how to write traditional words, you can turn off “Traditional to Simplified” option to disable the traditional writing.

**Note:** “Traditional to Simplified” option is available only when you switch to the simplified version.





2. Traditional character: All the results are traditional words.
3. Traditional+Simplified: You will get traditional words while using traditional writing, and get simplified words while using simplified writing.

### Unusual character

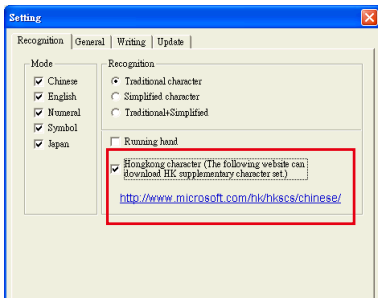
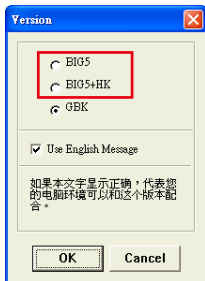
The system will recognize some unusual words only when you turn on “Unusual character” option.

### Running Hand

Check this option to have the software recognize run-on cursive.

### Hongkong Character

This recognition mode is only available when the Penpower Jr. is set to the Traditional Chinese or Traditional Chinese (Hongkong) version. You can connect to <http://www.microsoft.com/hk/hkscs/default.aspx> to check the Hongkong characters list.



## 4.7.2 General Setting

### Half shape/Full shape

To decide whether the handwriting result of alphanumeric is recognized as one-byte code or double-bytes code.

### Auto load

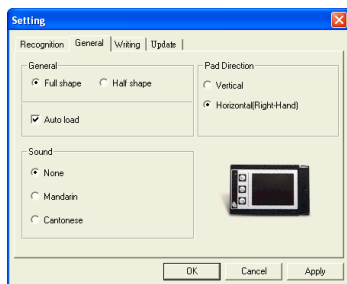
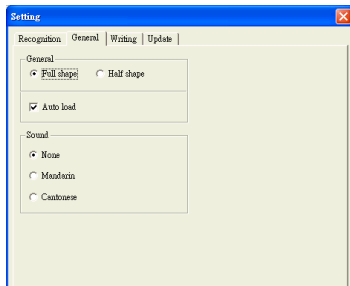
Auto execute Penpower Jr. handwriting system when windows start-up.

### Touch Pad Direction

If you are using Penpower Junior miniCard, you can use this feature to set the orientation of the touch pad as Horizontal or Vertical. By default the touch pad is set to Horizontal (Right-Hand) but you can use this setting to change it to portrait.

### Sound

Pronounce the character in Mandarin or Cantonese immediately after recognition.





## 4.7.3 Writing Setting

### Ink color

Change the color of inking. You can adjust the smoothness of color degree for “Multiple” option.

### Ink width

Change the thickness of inking.

### Ink sound

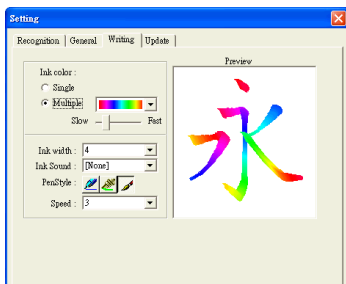
Change the sound effect while writing.

### Pen style

There three kind of pen style to choose.

### Speed

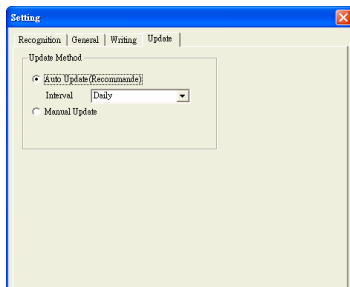
There are several levels of writing speed you can set. After you stop writing, the less the relative value is, the shorter the timeout waiting for recognition is.



## 4.7.4 Update Method Setting

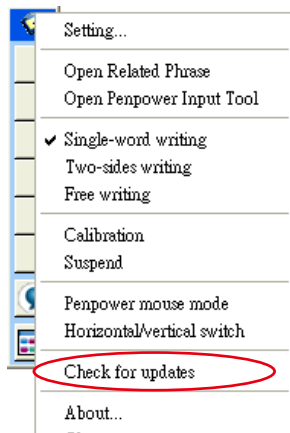
### Auto Update

You are recommended to set the update method as **Auto Update** to let the system automatically check for and download updates. You can determine the check interval as daily, weekly, biweekly, or monthly.



### Manual Update

You can also set the update method as **Manual Update**. Please Go to the main menu and select [**Check for updates**] and the system will then check for updates for you. If your version is the newest, the message box will display as below.



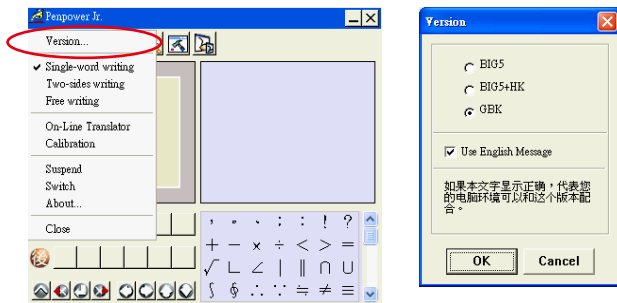


## 4.8 Writing Application

The following will introduce the function of Writing Application, such as Switch Version, Gesture, Mix Traditional and Simplified Writing, and Using Penpower Jr. in MSN Messenger.

### 4.8.1 Switch Version

1. In Mouse mode, open the Penpower Jr. options then select “Version...”.



2. Under the Windows System for Traditional Chinese, Traditional Chinese (Hong Kong) or Simplified Chinese the output of the handwriting recognition will always be encoded using Unicode. After switching version, if you can not see the message displayed correctly on the bottom, it means that your Windows system may not support this version you chose.
3. Check “Use English Message” option to display all the messages of Penpower Jr. handwriting system in English.

### 4.8.2 Gesture

Penpower Jr. handwriting system support four standard inking gesture. You can handwriting these gestures to simulate keyboard input.

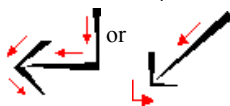
1. Delete : simulate DELETE key.



2. Backspace : simulate BACKSPACE key.



3. Enter : simulate ENTER key.

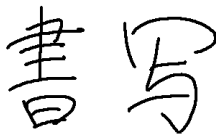


4. Space : simulate SPACE key.



### 4.8.3 Mix Traditional and Simplified Writing

You can mix writing traditional and simplified Chinese words. e.g. Hand-write two words 『書写』.





Whatever you wrote, choose different recognition engine to decide the results being traditional or simplified words. Please see 4.6.1 for more details

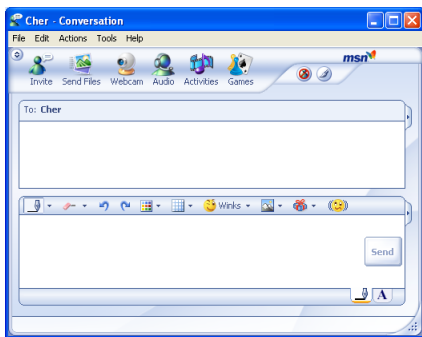


## 4.8.4 Using Penpower Jr. in MSN Messenger

**Note:** You have to install MSN Messenger version 6.1 or higher.

After you have signed in to the MSN Messenger, double click on the person's name to begin the conversation box. Below this conversation box, there are two modes for you to select, including “Handwrite”  and “Type” . You can switch between the input modes as you like.

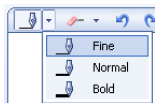
**Note:** If you can't activate the handwriting mode, please visit the Micro-soft website and install the necessary handwriting components.



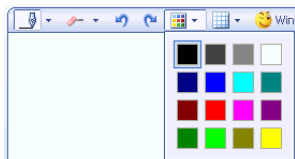
In the Handwrite mode, you can select the font size and font color from the scroll bar menu provided. After the setting has been done, you can write on the tablet and the words will appear as what you have previously set.

If you want to clear the words you have written, you can select and use the eraser shown in the scroll bar.

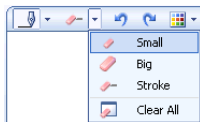
After you have input your message, you can click on “send” to send your handwritten message.



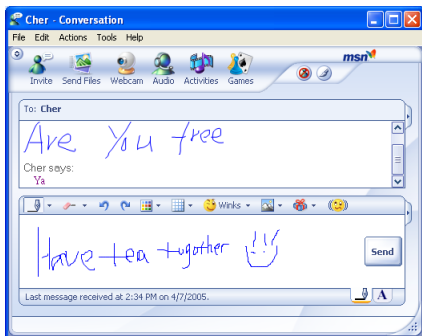
Set ink width



Set ink color



Set the rubber



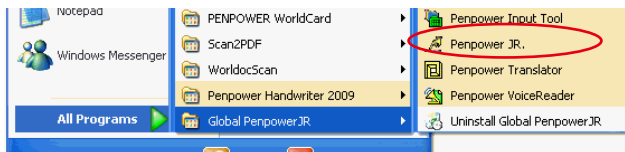





## Chapter 5 Traditional Mode

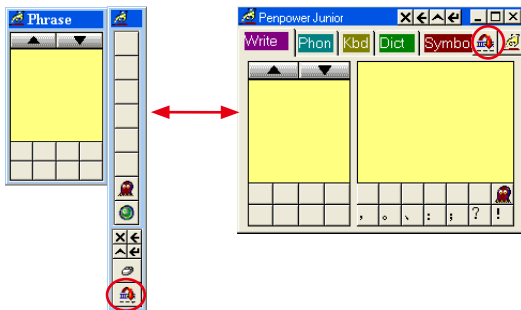
### 5.1 Run Penpower Jr. Handwriting System

If you installed “Traditional Mode” and run “Start/All Programs/Global PenpowerJr/Penpower Jr.”, you will see the Traditional Handwriting window.



### 5.2 Writing Mode

There are two kind of writing modes. One is “Full-Screen” mode, the other one is “Writing-Pad” mode. You can click the  button to toggle these two writing mode.

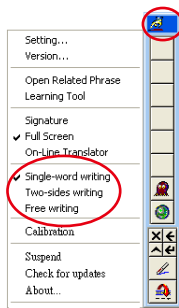




## 5.3 Full Screen Handwriting

There are three different options of full screen mode in the main menu, Single-word writing, Two-sides writing and Free writing.

Please see Chapter 4.3.3 for more details.



### 5.3.1 Balloon UI

This unique user interface let you edit recognition result freely in any application. The visual user interface is hidden transparently.

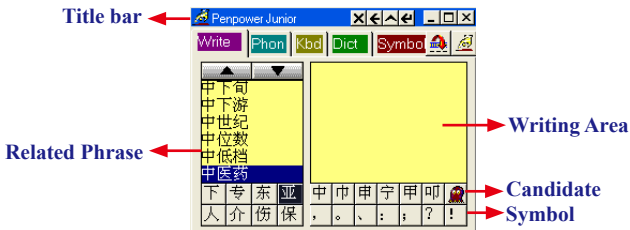
When you want to correct some word, just move the cursor position on this word for a while. The function tool bar will be popped up there where the cursor is.

Please refer to Chapter 4.4 for more details.

## 5.4 Writing-Pad

There are five input tools in Writing-Pad: Write, Phonetic, Keyboard, Dictionary and Symbol.


### 5.4.1 Write Input Tool



You need to click the middle button or click on the writing area switching into pen mode before you start writing. The color of writing area will change from gray into yellow.

The left button would be revised for error correction on pen mode. While you press the left button once each time, the latest recognized result would be replaced with the next candidate word. It lets you correct the result quickly without switching to mouse mode.

Click the middle button or click on the writing area again to switch into mouse mode. The color of writing area will change from yellow into gray.

**Tip:** The writing-pad adopts shrink-expand user interface. It would expand into normal size when the cursor move on it. Otherwise it will shrink as an small icon  to avoid occupying the screen.

## 5.4.2 Phonetic Input Tool

There are three types of phonetic input tool, Zhu yin, Cantonese and Hanyu by default. You can create your own phonetic input tool.

### How to Use

1. Select one phonetic input tool of Zhu yin, Cantonese and Hanyu or others.
2. Click the phonetic button one by one in order.
3. The converted candidate character would be listed in the text buffer.



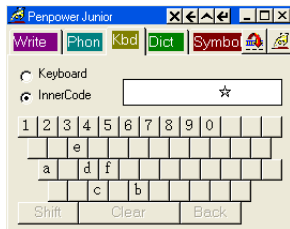
## 5.4.3 Keyboard Input Tool

### Keyboard

Simulated software keyboard.

### Inner Code

For example, the inner code of [☆] in hexadecimal is A1EE. Click [A], [1], [E], [E] button one by one in order, and then get [☆].

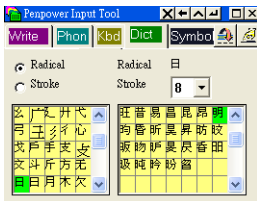
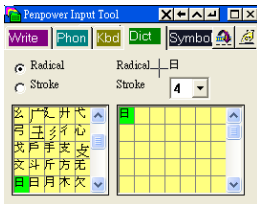


## 5.4.4 Dictionary Input Tool

### Query by stroke

For example, when you want to input the character 『明』, you can

1. Choose the stroke of the radical: 4.
2. Select the radical 『日』 from the candidates.
3. Choose the total strokes of 『明』 : 8.
4. Select your target character: 『明』 .



### Query by radical

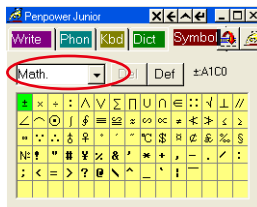
For example, when you want to input the character 『明』, you can

1. Choose the total strokes of 『明』 : 8.
2. Select your target character: 『明』 .



## 5.4.5 Symbol Input Tool

The special symbols are grouped into multiple pages of table. Select the suitable table and click the symbol what you want to get. It allows you to customize the symbol tables.



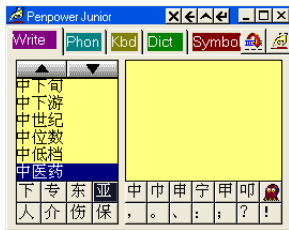
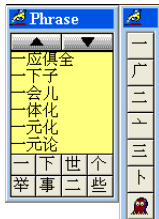


## 5.5 Phrase

### 5.5.1 Use Phurase to input words

1. In both the Full Screen and Writing-Pad modes the Associations dictionary window will always be displayed.

**Note:** In Full Screen Handwriting mode, if the Associations dictionary is closed, select “Open Related Phrase” from the menu to reopen it.



2. Write down the first word of one phrase. e.g. If you want to input the phrase 『一方面』, just write the first word 『一』.
3. All the phrases beginning with this word 『一』 will be listed on the top.
4. All the memorized words you have ever written right following this word 『一』 will be listed on the bottom.
5. Click the phrase or memorized word that you want to send it into the caret. e.g. 『一方面』.

一

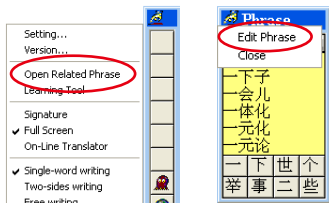


一方面

## 5.5.2 Update Phrase Database

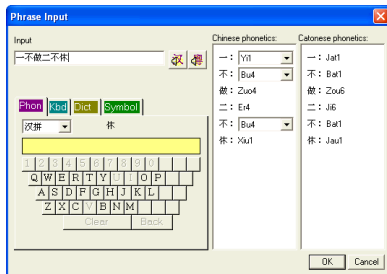
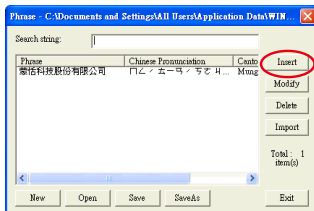
There are thousands upon thousands default phrases that you can use in the Penpower handwriting recognition. It also allows you to customize the phrase database to meet your needs.

1. Open the Penpower Jr. main menu and select “Open Related Phrase”. Then select “Edit Phrase” from the Phrase menu to open the “Edit Phrase” dialogue to edit the dictionary.



2. Click “Insert” to open the phrase input dialog. You can input a new phrase here.

Please see Chapter 4.5.3 for more details.



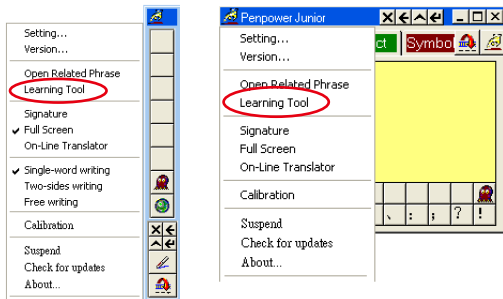


## 5.6 Other Functions

### 5.6.1 Learning Tool

Select the “Learning Tool” from the main menu to open the Learning Tool dialogue.

Please see Chapter 4.5.2 for more details.



### 5.6.2 Signature

Move the caret to where the signature will be. Then select “Signature” from the main menu to open the “Welcom to Penpower Signature Tool” screen, and enter in signature mode.

Please refer to Chapter 4.4.4 for more details.

### 5.6.3 On-Line Translator

Select “On-Line Translat” from the main menu to open the On-Line Translat function. Select again to close the function.

Please refer to Chapter 4.5.5 for more details.

## 5.6.4 Setting


In Penpower Junior's options menu select "Settings" to open the settings page. You can configure the recognition engine, output format or writing tracks here. For more details on PenPower settings please refer to the explanation provided in Chapter 4.7. The only difference is that in Traditional mode the writing pad display can be configured here.

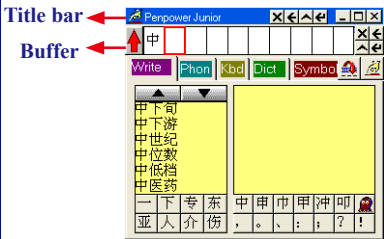
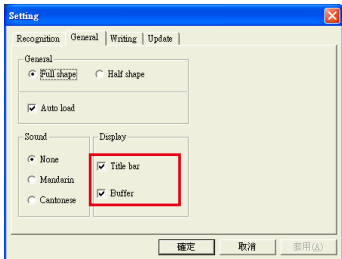
Please switch to the "General" setting page and in the "Display" area you can choose whether to display the window title and the buffer area.

### Title bar

Show/hide the caption of writing-pad.

### Buffer

Show/hide the text buffer of Writing-pad. If the buffer is displayed, all the recognition result would be put here. After the buffer is full, the first word would be popped out into the caret. You can also click  button to force all the result popped out and clear the buffer anytime. If the buffer is hidden, the recognition result will be send to the caret directly.





### **5.6.5 Switch Version**

Open the main menu. Select “Version...”. There are three Versions for Choose. Please see Chapter 4.8.1 for more details.

### **5.6.6 Gesture**

Penpower Jr. handwriting system support four standard inking gesture. You can handwriting these gestures to simulate keyboard input.

Please see Chapter 4.8.2 for more details.

### **5.6.7 Mix Traditional and Simplified Writing**

You can mix writing traditional and simplified Chinese words. Whatever you wrote, choose different recognition engine to decide the results being traditional or simplified words.

Please see Chapter 4.8.3 for more details.

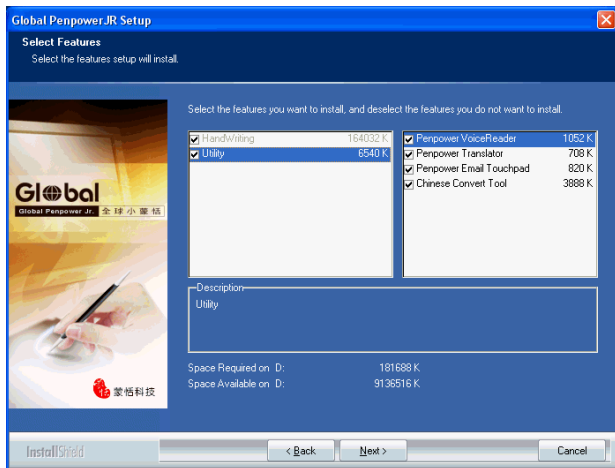
### **5.6.8 Using Penpower Jr. in MSN Messenger**

If you have to install MSN Messenger version 6.1 or higher and Penpower Jr., you can use Penpower Jr. touch pad to input or draw in MSN.

Please refer to Chapter 4.8.4 for more details.

## Chapter 6 Assistant Tools

If you selected the 'Typical' or 'Custom' type during the installation, you will find Penpower VoiceReader, Penpower Translator and Penpower Chinese Convert Tool. In the Custom type, you could select the functions to install.






## 6.1 Penpower Voice Reader


Integrate the Text to Speech (TTS) technology to read aloud the Chinese article content within any window.

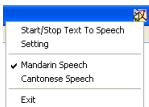
### 6.1.1 Use Penpower Voice Reader


1. Run “Start/All Programs/Global Penpower Jr/Penpower VoiceReader”.

*Note: Before run Penpower VoiceReader, please launch Penpower Jr. first or the system will prompt you to do so.*


2. After Voice Reader is executed, the small icon  would be displayed on the right top corner of any application.

3. If you select one paragraph of text first, then click , and select “Start/Stop Text To Speech”. The selected text will be read aloud. You can choose Mandarin or Cantonese tone pronunciation from the menu.




4. If you click  without selection, then select “Start/Stop Text To Speech”. The text would be read aloud from caret location.


*Note: The Windows Vista 64bit edition does not support the direct text-to-speech function. You must select a section of text before you can use the text-to-speech function.*

5. You can click , and select “Start/Stop Text To Speech” again to stop reading.



6. Click  , select “Exit” to exit the Penpower Voice Reader.

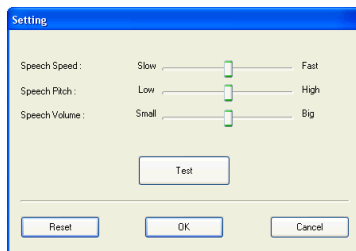
## 6.1.2 Reading Setting

1. Click  , select “Setting” to open the setting dialog.

Speech Speed : Adjust the speed of reading.

Speech Pitch : Adjust the tone of reading.

Speech Volume : Adjust the volume of reading.



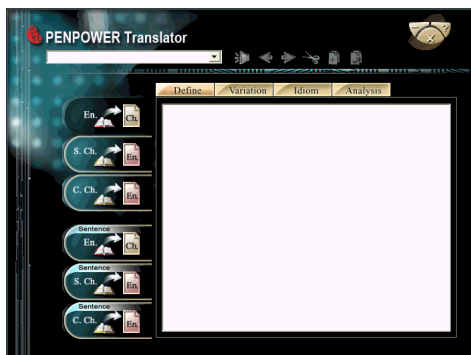


## 6.2 Penpower Translator

This is a word translator of Chinese to English or English to Chinese, and sentence translator of English to Chinese.

Run “Start/All Programs/Global Penpower Jr/Penpower Translator”.

*Note: Before run Penpower Translator, please launch Penpower Junior first or the system will prompt you to do so.*





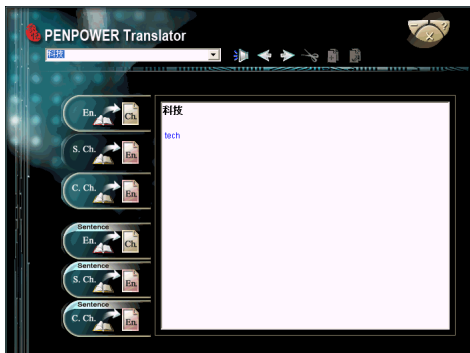





## 6.2.2 Chinese Characters

1. Click the button “S.Ch. En.” on the left.
2. In the input frame on the upper left corner, input a Chinese character or phrase, and then hit Enter to see the English explanation.

*Tip: If the Chinese word you wish to look up is Traditional Chinese, please select the “C. Ch. En.” translation option.*



### 6.2.3 English Chinese Article Translator


1. Click the button “Sentence En. Ch.” translation on the left.
2. In the top input frame, input an English article, click the  button to start translation. The translation result is shown in the lower input frame.

**Tip:** *When you translate a whole article, make sure there's a period mark at the end of each sentence. It will increase the accuracy of translation.*






## 6.2.4 Chinese English Article Translator

1. Click the button “Sentence S. Ch.En.” translation on the left.
2. In the top input frame, input an Chinese article, click the  button to start translation. The translation result is shown in the lower input frame.

*Tip: If the Chinese sentence you wish to look up is Traditional Chinese, please select the “Sentence C. Ch. En.” translation option.*



Press the Speech  button. If looking up a single character or word, the system will provide its Chinese or English pronunciation. If translating the entire text, it will read all of the content in the current input window.

The other buttons on the translator interface have the following functions:




: Previous/Next: look up the definitions for nearby words.





: Cut: cut the selected content. (Only available when translating an entire sentence)



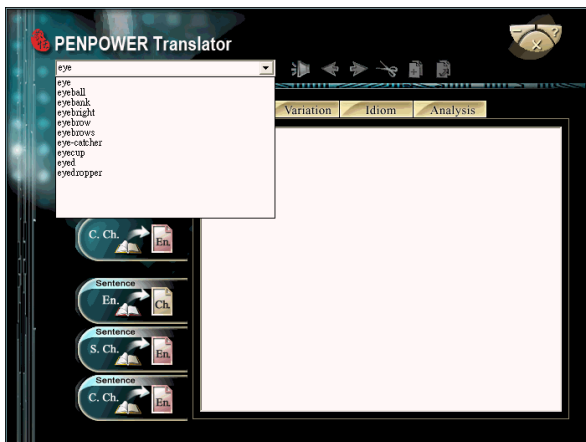
: Copy: copy the selected content.

 : Paste: paste the cut or copied content. (Only available when translating an entire sentence)



 : Delete: delete all input and translation content. (Only available when translating an entire sentence)

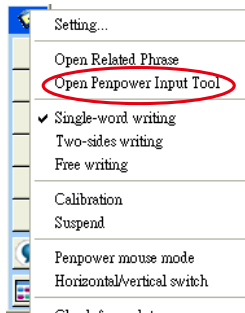
 : Save: press this button to open the “Save as...” dialogue window. This will save all of the input and translated content into a new \*.txt format file. (Only available when translating an entire sentence.)

When looking up a single word you do not need to enter the entire text string. If the word you wish to look up shows up in the list, use the direction keys to select that word as the input then press Enter to look up that word.

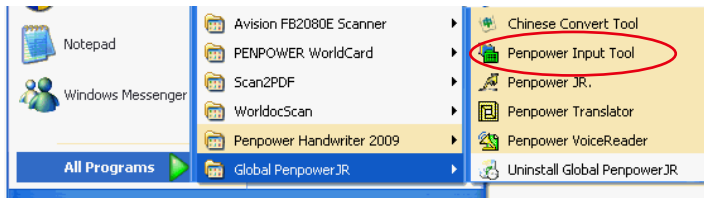



## 6.3 Penpower Input Tool

There are four types of input tools: Phonetic, Keyboard, Dictionary and Symbol. The new Handwriting mode provides Penpower Input Tool. Left mouse click on the “Menu” button  or rightmouse click on the toolbar  to open the options menu. Select [ Open Penpower Input Tool ] to open [ Penpower Input Tool ]. In the Traditional mode, this function includes in the Writing-Pad.



**Note:** You need to run the Penpower Jr. before run the Penpower Input Tool.



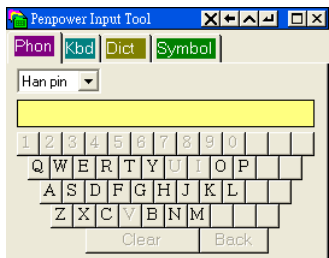
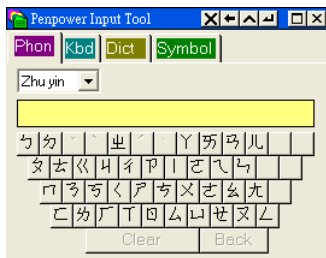
**Tip:** The writing-pad adopts shrink-expand user interface. It would expand into normal size when the cursor move on it. Otherwise it will shrink as an small icon  to avoid occupying the screen.

### 6.3.1 Phonetic Input Tool

There are three types of phonetic input tool, Zhu yin, Cantonese and Han pin by default. You can create your own phonetic input tool.

#### How to Use

1. Select one phonetic input tool of Zhu yin, Cantonese, Han pin or others.
2. Click the phonetic button one by one in order.
3. The converted candidate character would be listed in the text buffer.



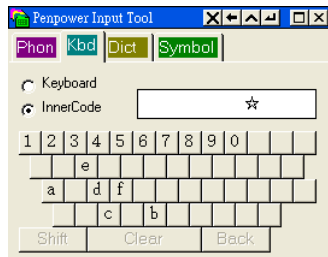
### 6.3.2 Keyboard Input Tool

#### Keyboard

Simulated software keyboard.

#### Inner Code

For example, the inner code of [☆] in hexadecimal is A1EE. Click [A], [1], [E], [E] button one by one in order, and then get [☆]



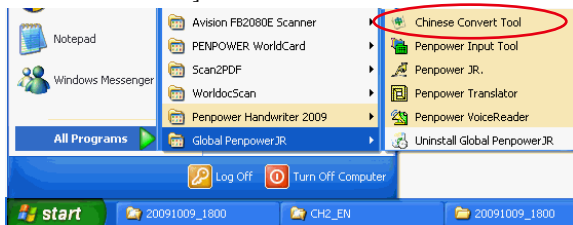


## 6.4 Chinese Covert Tool

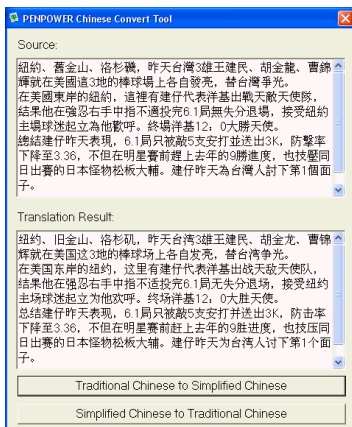
Global Penpower Jr. provides the Penpower Chinese Convert Tool. It can convert traditional and simplified Chinese words and articles.

*Note: You need to run the Penpower Jr. before run the Penpower Chinese Convert Tool.*

1. Run Penpower Jr. and then click [Start/All Programs/Global Penpower JR/ Chinese Convert Tool].



2. Input words or articles in the Source field, and depends on the your needs to click the ‘Traditional Chinese to Simplified Chinese’ or ‘Simplified Chinese to Traditional Chinese’ button.
3. The convert results will show in the translation result field. You can copy and paste to other applications when you need.




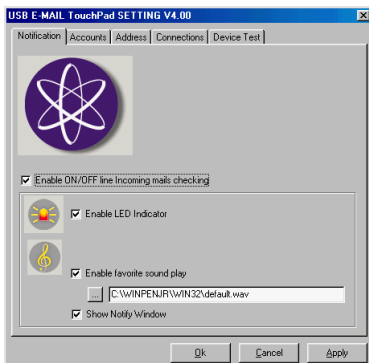
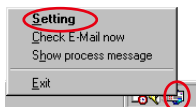




## 6.5 Penpower E-mail Touchpad

### 6.5.1 Setting

If you have custom-installed the “Penpower Email Touchpad” component, the email icon  would be displayed on the task bar when the windows start-up. Double-click the icon or right-click the icon to open the menu, and then select “setting”. It will invoke the setting dialog.



Enable ON/OFF line incoming mails checking : Enable/disable the function of auto mails checking.

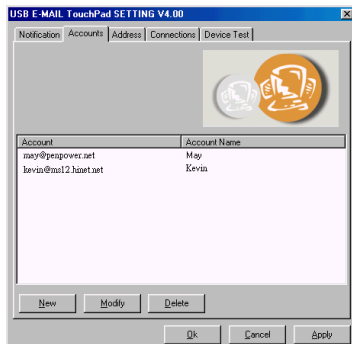
Enable LED Indicator : Blink the LED of touch-pad to hint the incoming emails.

Enable Favorite Sound Play : Change the wav file of music to hint the incoming emails.

Show Notify Window: Show pop-up window to hint the incoming emails.

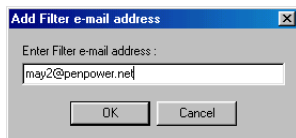
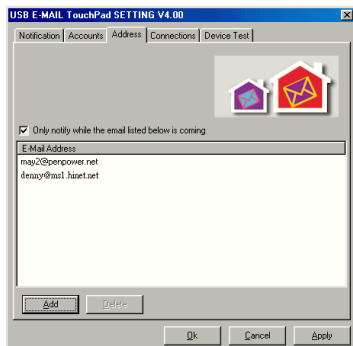
## 6.5.2 Accounts Management

You can manage multiple accounts to receive all the emails at once.



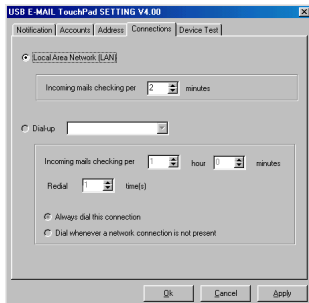
## 6.5.3 Email Address filter

You can filter your unnecessary emails. Check this option to notify you only when the listed email is coming.




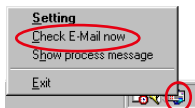
## 6.5.4 Connection

You can choose to check email through local area network (LAN) or dial-up internet. You can also set the period time to check email. If your system is offline, after dial-up and check email, it will be disconnected automatically.



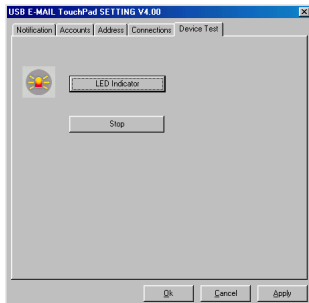
## 6.5.5 Check email manually

If you want to check email manually, right-click the email icon  to open the menu, and then select “Check Email now”.



## 6.5.6 Device Test

You can click “LED Indicator” button to test if the LED of touch-pad is normal.





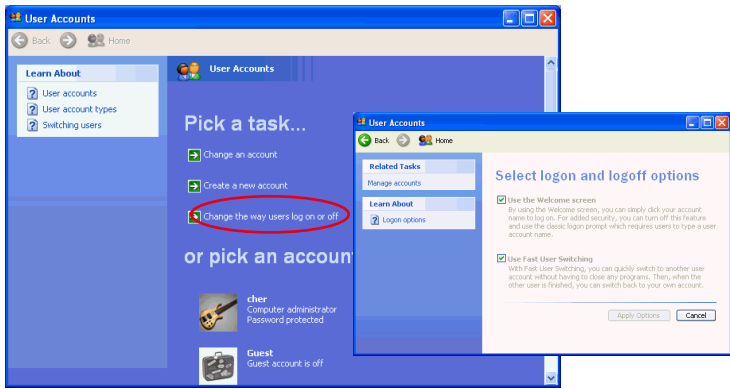
## Chapter 7 Fast User Switching

Penpower Jr. supports Windows Fast User Switching capability when you have more than one user account in Windows. That allow all the users can use Penpower Jr. without reinstalling in each account.

For example, in the Windows XP operation system. Open user account manager page from “Start/ Settings/Control Panel/User Accounts”. Click on “Change the way users log on or off” to open the “Select logon and logoff options” page.

Please select “User the Welcome screen” and “Use Fast User Switching” options, then click “Apply Options”.

Whatever account is used to login the functions of Penpower Jr. would work.



# **Penpower Jr. V7.2 User Manual**

Penpower Technology LTD.,

Release: July, 2010

Edition: 1