

Contents

Chapter 1 Introduction	1-1
Chapter 2 Installation	2-1
System Requirement	2-1
USB Human Interface Device Installation	2-1
Handwriting Software Installation	2-4
Chapter 3 Hardware Operation	3-1
Calibration	3-1
Touch-Pad Operation	3-2
Chapter 4 Handwriting	4-1
Writing Mode	4-1
Run PenPower Jr. Handwriting System	4-1
Full Screen Handwriting	4-2
How to Write	4-3
Balloon UI	4-4
Result Correction	4-5
Homophone	4-10
Switch Version	4-11
Mix Traditional and Simplified Writing	4-11
Related Phrase	4-13
Update Phrase Database	4-14
Duplicator	4-17
Pronunciation	4-17
Standard Tutor	4-18
Handwriting Inking	4-19



Punctuation Symbol	4-19
Writing Setting	4-20
Recognition Setting	4-21
General Setting	4-22
Gesture	4-24
Auto Phrase Correction	4-24
Learning String	4-25
Signature	4-26
Writing-Pad	4-28
Phonetic Input Tool	4-29
Keyboard Input Tool	4-31
Symbol Input Tool	4-31
Dictionary Input Tool	4-32
Chapter 5 Advance	5-1
PenPower VoiceReader	5-1
PenPower Email Touchpad (for crystal touch USB only)	5-4
PenPower Hot Key	5-8
Chapter 6 DOS Version	6-1
Invoke PenPower Jr. Handwriting System	6-1
Exit PenPower Jr. Handwriting System	6-1
Data Input	6-1
Update the Result	6-2

Chapter 1 Introduction

Unicode recognition kernel

Support unicode system to input Traditional and Simplified Chinese easily.

All in one recognition kernel of Big5 and GB

The character set can be recognized including more than 23000 Chinese words, 4702 HongKong words,alphabet,numeric,symbol, Hiragana, and Katakana.

Artificial Intelligence recognition kernel

After you correct the recognition result from candidate or AI dialog, the system will modify its recognition database to adapt your personal writing style. This would improve the recognition rate for yourself.

Full screen multi-words free writing

It is allowed to handwrite multiple words before recognition at one time based on the advanced character segmentation technology.

free writing recognition kernel

Not only the stroke order is free, but even though the careless or illegible continuous free writing could be recognized correctly.

Other auxiliary function

provide many usefully functions,such as related phrase,related word,special symbol table,homophone,dictionary,learning string,color inking and sound effect...etc, to make input easier.

**PenPower VoiceReader**

Integrate the Text-to-Speech technology to read aloud the Chinese article content within any window.

Transparent signature

Your signature could overlap with the WORD or EXCEL document to keep their related position to avoid ruining the document format.

Balloon UI

The visual user interface is hidden transparently. The function tool bar will be popped up on the word where the cursor is.

Receive email (for crystal touch USB only)

Auto receive email from internet and announce the user by blink or music.

mail account management (for crystal touch USB only)

Support account filter and multi-account management.

Chapter 2 Installation

System Requirement

1. Intel Pentium processor or compatible
2. 32MB RAM
3. 65MB disk space
4. Windows 31/95/98/Me/NT/2000/XP or DOS



NOTE : Win31/95/NT and DOS do not support USB.

USB Human Interface Device Installation

If your touch pad used in Win98 system is USB model, you must install the USB human interface device before installing the PenPower handwriting recognition system software.



NOTE : If your system is Windows 2000/XP or your touch-pad is serial model, the USB human interface device does not need to be installed individually. Please skip this section, and install the PenPower handwriting recognition system software directly.





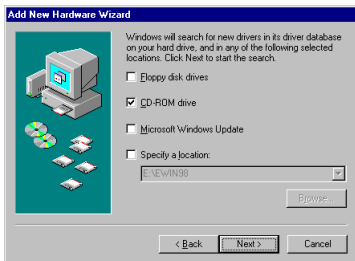
1. Connect the touch-pad with USB port on computer. The Windows system would auto detect the existence of a new USB hardware. Click [Next].



2. Select the first option to let Windows system be able to auto search for the best driver for touch-pad. Click [Next].



3. Click [Next] to start the search.



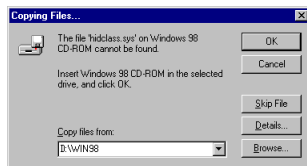
4. It is now ready to install the USB human interface device driver for the touch-pad. Click [Next] to continue.



5. Please insert your Windows system disc, and then click [OK].



6. Please input the location of Windows system on the disc, and then click [OK].



7. Click [Finish] to complete the installation.



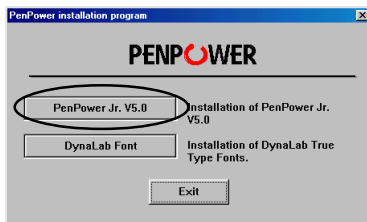
8. You must continue to install the handwriting software.



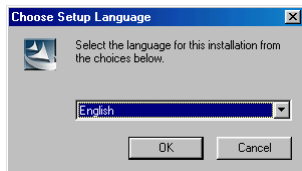
Handwriting Software Installation

For Windows System

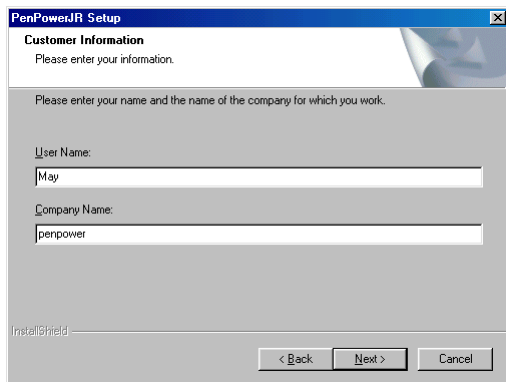
1. Insert the PenPower Jr. disc. Run setup.exe, and then Click [PenPower Jr. V5.0].



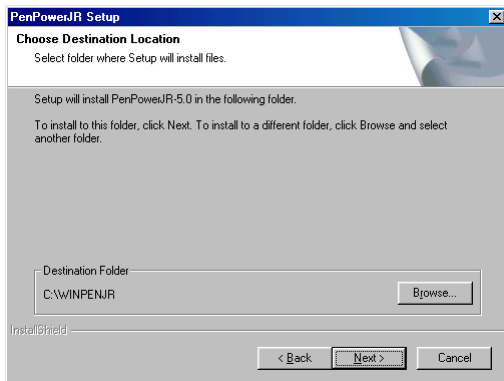
2. Select setup language.



3. Input the user name and company name.

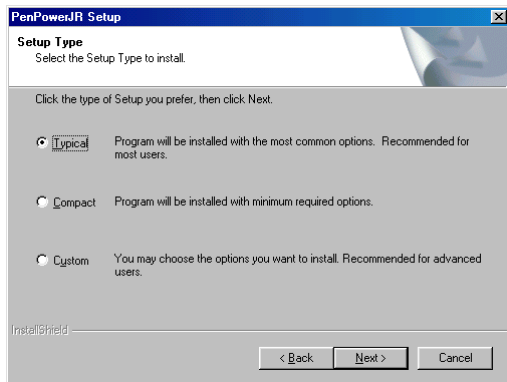


4. Select folder where setup will install files.

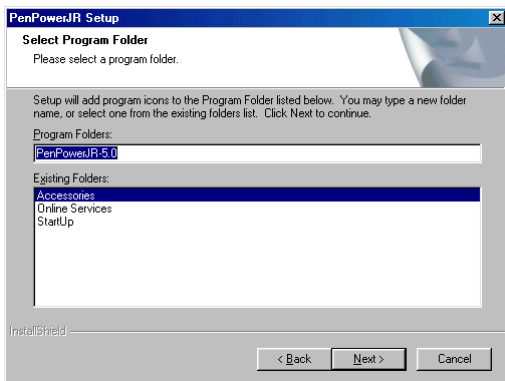




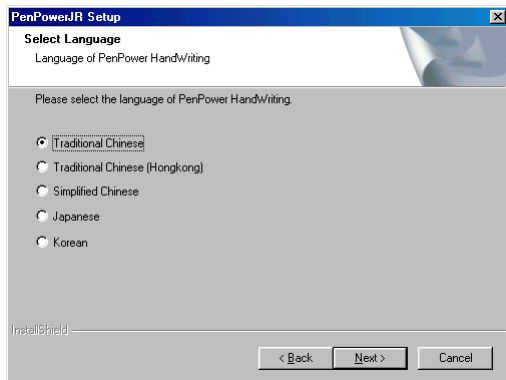
5. Select the setup type of typical, compact, or custom.



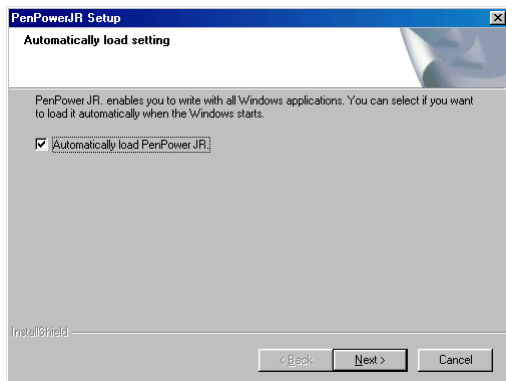
6. Select the program folder.



7. Select the language of handwriting recognition kernel.



8. Enable to auto-load the handwriting software when the windows starts.





9. After finishing installation, you must reboot.



For DOS System

1. Run Chinese system first, e.g. ETEN.
2. Insert the PenPower Jr. disc. Run the correct installation program for the version that you want to install. (D is the CD-ROM drive)

Traditional Chinese version : D:\WINPENJR\DOS_TW\INSTALL

HongKong version : D:\WINPENJR\DOS_HK\INSTALL

Simplified Chinese version : D:\WINPENJR\DOS_GB\INSTALL

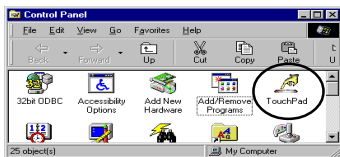
3. While installation, you need to input where the software would be installed. The default path is C:\WINPENJR. You can change it also.
4. After finishing installation, run GO to start the PenPower Jr. handwriting system.

Chapter 3 Hardware Operation

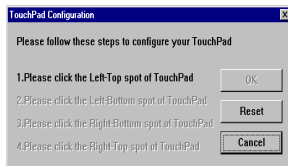
Calibration

After finishing installation, you should be able to hand write right away. If you found that the inking you wrote is not centered on screen, you need to calibrate your touch-pad to remap the active area.

1. Open [Control Panel] folder, and then double click [TouchPad] icon to run the calibration program.



2. Please click on the four corner spot of touch-pad starting from top-left in counterclockwise direction.



TIP : After calibration, the new configuration would take effect immediately. You do not need reboot or reload PenPower Jr. hand-writing system.



Touch-Pad Operation

1. Moving

Put the pen on the touch-pad, and then move it on the panel gently.

2. Click

Hit the touch-pad once.



3. Dragging

Hit the touch-pad twice quickly, and move the pen on the panel while second pen down.



4. Double click

Hit the touch-pad twice quickly.



5. There are three buttons on the touch-pad as normal mouse functionality, but the middle button is defined to toggle pen mode and mouse mode. The left button would be revised for error correction on pen mode state. While you press the left button once each time, the latest recognized result would be replaced with the next candidate word. It lets you correct the result quickly without switching to mouse mode.



TIP : There is no middle button for some touch-pad. You can click the “mode” button on the window to switch mouse mode and pen mode.




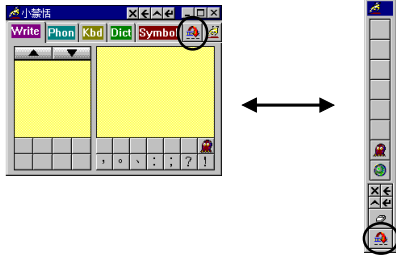
TIP : The three buttons are not on a line for some touch-pad. The alone one is the middle button.



Chapter 4 Handwriting

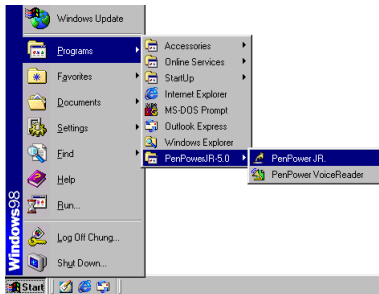
Writing Mode

There are two kind of writing modes. One is [Full-Screen] mode, the other one is [Writing-Pad] mode. You can click the button  to toggle these two writing mode.



Run PenPower Jr. Handwriting System

1.Run [Start]/[Programs]/[PenPower Jr. 5.0]/[PenPower Jr.]





Full Screen Handwriting

There are three different options of full screen mode in the main menu.

Single-word writing



It is allowed to handwrite one word only at one time. You can not handwrite the next word until the recognition result of current word has been finished.

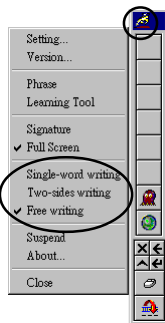
Two-sides writing

After the first stroke is written, one vertical line would be displayed on the center of screen. All the strokes written on the same side would be considered as part of one word. When a new stroke is crossed to the other side, it means that the last word is finished and the next word start to write.

Free writing

You can handwrite multiple characters before recognition at one time. Forty one characters at most is allowed. It permits left-to-right, or top-to-bottom free writing order. Remember to keep adequate distance between two contiguous words when you write. It affects the result of character segmentation.

You need to click the middle button switching into pen mode  before you start writing. The touch-pad could only be used as mouse function on mouse mode . The left button would be revised for error correction on



pen mode. While you press the left button once each time, the latest recognized result would be replaced with the next candidate word. It lets you correct the result quickly without switching to mouse mode.

How to Write

On [free writing] mode, it's better to keep strokes of the same word closed, and keep not to overlap between words when you write. You need to finish writing every strokes of one word.

Right example : Write three words of [明日月].



Wrong example 1 : Overlap between two words. All the strokes may be recognized as one word.



Wrong example 2 : The two parts of one word are written far away from each other. All the strokes may be segmented into two words.















Balloon UI

This unique user interface let you edit recognition result freely in any application. The visual user interface is hidden transparently. When you want to correct some word, just move the cursor position on this word for a while. The function tool bar will be popped up there where the cursor is.

蒙恬气泡式介面



 TIP : You do not need to press any button after the cursor is moved on the word.

In the function tool bar, click candidate words, AI button , homophone , pre-related word , post-related word  to correct the result. clickbutton  to see the raw inking. Click  button to see the tutor. Click  button to input punctuation symbol. Click  button to split one word. Click  button to merge the word with next word.

 NOTE : The translation button  is disabled in PenPower Jr. hand-writing system. It is enabled in other PenPower products.

Result Correction

When you use candidate word or AI button to correct result, the system will modify its recognition database to adapt your personal writing style. The may improve the recognition rate.

By Artificial Intelligence

1. Handwrite some words. The result would be sent in the caret.


2. e.g. [恬] is wrongly recognized as [恰].

蒙恰科技

3. Move the cursor on the word [恰] for a while to pop up the function tool bar.



4. Click the candidate word if the correct word is there.

5. Otherwise click the AI button  to open the AI correction dialog.

6. Input the correct word [恬], and then click [OK].

7. You will see the wrong result [恰] is already updated as [恬]. Your personal writing style of inking has also been learned.

蒙恬科技





By related word

For any two contiguous words, the first one is the pre-related word of the second one. The second one is the post-related word of the first one.


e.g. [科技], [科] is the pre-related word of [技], and [技] is the post-related word of [科].

1. Handwrite some words. The result would be sent in the caret

2. e.g. [恬] is wrongly recognized as [恰], and [科] is wrongly recognized as [料].


蒙恰科技|

3. Move the cursor on the word [恰] for a while to pop up the function tool bar.

4. Click  button to open the window of pre-related phrases. If the correct phrase [蒙恬] is in the list, click it to update the result.

蒙恰科技|



5. Move the cursor on the word [料] for a while to pop up the function tool bar.
6. Click  button to open the window of post-related phrases. If the correct phrase [科技] is in the list, click it to update the result.

蒙恬料技



7. You will see the wrong result [蒙恰科技] is already updated as [蒙恬科技] at last.

蒙恬科技



Merge

When some strokes of one word are written far away from each other, they may be recognized as several words. You can use merge function to combined them into one word.

1. Handwrite two words [栋梁] by free writing. The result would be sent in the caret.


木 东 梁

2. If [木] and [东] is written far away from each other, you may wrongly get three words of result [木东梁].

木东梁|

3. Move the cursor on the first word [木] for a while to pop up the function tool bar.



4. Click  button to merge [木] and [东] into [栋].

栋梁|



NOTE : Only two continuous words could be merged at one time.

Split

When two words are written too close, they may be recognized as single word. You can use split function to separate it into two words.

1. Handwrite four words [日月星辰] by free writing. The result would be sent in the caret.


明星辰

2. If [日] and [月] is written too close, you may wrongly get three words of result [明星辰].

明星辰|

3. Move the cursor on the word [明] for a while to pop up the function tool bar.



4. Click  button to separate [明] into [日] and [月].

日月星辰|




Homophone



If you forget how to write some words, or they are too complicated to write, you can write down some other easy homophone to get the word that you would like to input. e.g. If you want to input the word [豫]:

1. Write any one homophone of [豫], e.g. [玉]. The result would be sent in the caret.

2. Move the cursor on the first word [玉] for a while to pop up the function tool bar.

3. Click  button to open the window of homophone words.

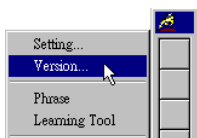


4. You can Click  /  /  button to toggle other BoPoMo homophone / Cantonese homophone / Beijing homophone.
5. Click [豫] to replace [玉].

豫

Switch Version

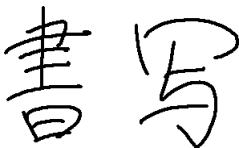
1. Open the main menu. Select [Version...].



2. Choose the version of traditional Chinese, HongKong version, or simplified Chinese. Their inner code of recognition result are BIG5/BIG5/GB in Win98 system, and Unicode in Win2000 system. After switching version, if you can not see the message displayed correctly on the bottom, it means that your Windows system may not support this version you chose.
3. Check [Use English Message] option to display all the messages of PenPower Jr. handwriting system in English.

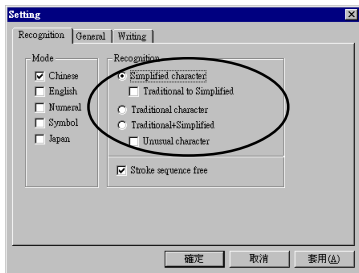
Mix Traditional and Simplified Writing

You can mix writing traditional and simplified Chinese words. e.g. Handwrite two words [书写].





Whatever you wrote, choose different recognition engine to decide the results being traditional or simplified words.



a.Simplified character:All the results are simplified words. If you do not know how to write traditional words, you can turn off [Traditional to Simplified] option to disable the traditional writing.

b.Traditional character:All the results are traditional words.

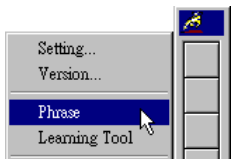
c.Traditional+ Simplified:You will get traditional words while using traditional writing, and get simplified words while using simplified writing. The system will recognize some unusual words only when you turn on [Unusual character] option. If not necessary, please turn off this option.



NOTE : [Traditional to Simplified] option is available only when you switch to simplified version. See [Switch version] section.

Related Phrase

1. Open the main menu. Select [Phrase] to show related phrase window.



2. Write down the first word of one phrase. e.g. If you want to input the phrase [一方面], just write the first word [一].

→ |

3. All the phrases beginning with this word [一] will be listed on the top.

4. All the memorized words you have ever written right following this word [一] will be listed on the bottom.



5. Click the phrase or memorized word that you want to send it into the caret.
e.g. [一方面].

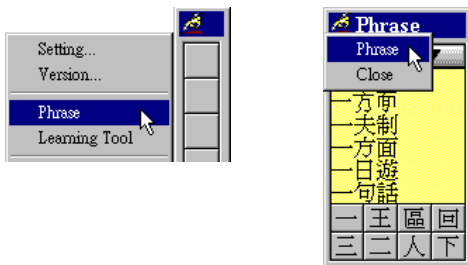
一方面 |



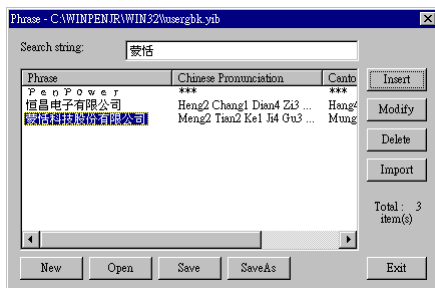
Update Phrase Database

There are thousands upon thousands default phrases that you can use in the PenPower hand writing recognition. It also allows you to customize the phrase database to meet your need.

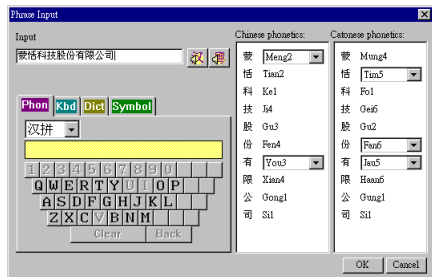
1. Open the main menu. Select [Phrase].






2. The phrase dialog would be opened.



3. Click [insert] to open the phrase input dialog. You can input a new phrase here. e.g. If you want to insert your company name as a phrase, input [蒙恬科技股份有限公司].



You need to update the phonetics on the right side. Click  /  button to hear their pronunciation and check if the one you choose is right.

 NOYE : The maximum length of one phrase is 200 word. In fact, the phonetics is only for VoiceReader to read text with right sound of phonetics. If you do not care, you can skip it.

Click [OK] to finish insertion. Afterward, if you write [蒙], then [蒙恬科技股份有限公司] would be displayed in the related phrase window. Just click it to input.



4. Select on phrase from the list, and then click [Modify] to update the phonetics of this phrase. Click [Delete] to delete this phrase from database.
5. In [Search string] field, you can only input part of a phrase to find this phrase quickly.
6. You can use [New],[Open],[Save],[SaveAs] function to manage your phrase database (*.yib).



NOTE : Although you can create several phrase database, you can only choose one at one time.

7.Import file

Click [Import] and select one phrase database (*.yib) or text file to import it into current database.

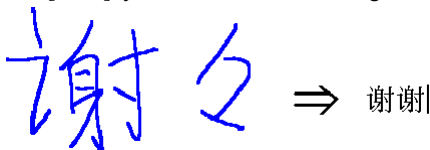
The text file format must follow this rule - one phrase in each line. You can edit it by any editor, e.g. NotePad.



NOTE : Every imported phrase would own phonetecs by default. Their phonetics may be wrong. You can modify them from phrase dialog.

Duplicator

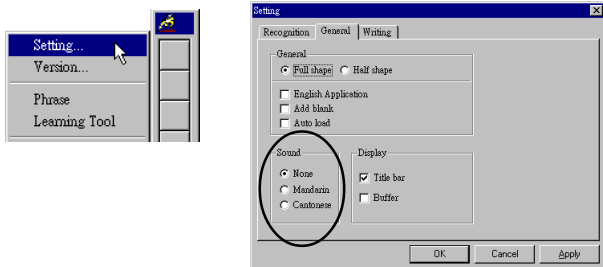
You can write the symbol [↵] to duplicate previous recognized word. e.g. Input two words [谢谢], you can write as following:



Pronunciation

Pronounce the string in Mandarin or Cantonese immediately after recognition.


1. Open the main menu. Select [Setting...].



2. Click [General] tag. Select [Mandarin] or [Cantonese] from the [Sound] field.





Standard Tutor

1. Handwrite some words. The result would be sent in the caret.
2. Move the cursor on the word that you want to see the tutor for a while to pop up the function tool bar.
3. Click  button to open the tutor dialog.


蒙恬科技|




Click  to see the tutor of standard inking.

Click  to hear the Taiwanese tone pronunciation.

Click  to hear the Mandarin tone pronunciation.

Click  to hear the Cantonese tone pronunciation.

Handwriting Inking


1. Handwrite some words. The result would be sent in the caret.
2. Move the cursor on the word that you want to see your inking for a while to pop up the function tool bar.
3. Click  button to show your inking.



Punctuation Symbol

1. Handwrite some words. The result would be sent in the caret.
2. Move the cursor on the word where you want to input a punctuation symbol for a while to pop up the function tool bar.

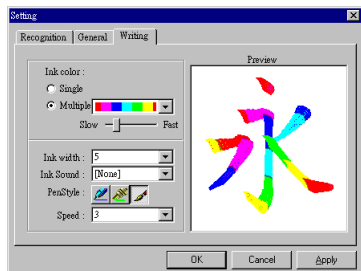
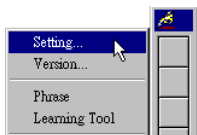


3. Click  button to open the symbol menu. Click what you want to input.



Writing Setting

1. Open the main menu. Select [Setting...].



2. Click [Writing] tag.

Ink color : Change the color of inking. You can adjust the smoothness of color degree for [Multiple] option.

Ink width : Change the thickness of inking.

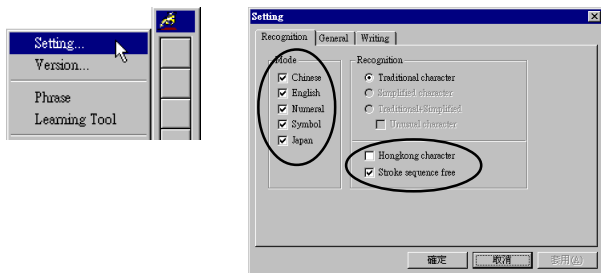
Ink sound : Change the sound effect while writing.

Pen style : There three kind of pen style to choose.

Speed : There are several levels of writing speed you can set. After you stop writing, the less the relative value is , the shorter the timeout waiting for recognition is.

Recognition Setting

1. Open the main menu. Select [Setting...].



2. Click [Recognition] tag.

The recognition mode of Chinese, Alphabet, Numeric, Symbol, Japanese, and Hongkong words could be turned on/off individually. You could turn on several modes at the same time.

Turn on [Stroke sequence free] to allow handwriting in any stroke sequence.

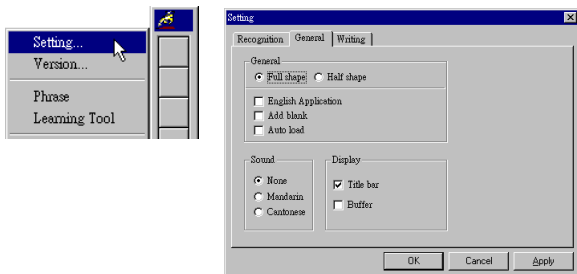


NOTE : [Hongkong character] option is available only when you switch to traditional or Hongkong version. See [Switch version] section.



General Setting

1. Open the main menu. Select [Setting...].



2. Click [General] tag.

Half shape/Full shape : To decide whether the handwriting result of alphanumeric is recognized as one-byte ASCII code or double-bytes code.

English Application : On localized application for operating system of double-bytes, after you press one backspace key, one double-bytes word will be deleted. On the contrary, some non-localized application need two backspace key to delete one double-bytes word. In this case, please turn this option on.

Add blank : Turn this option on to append one space character after each word of recognition result. It helps alignment in some English application.

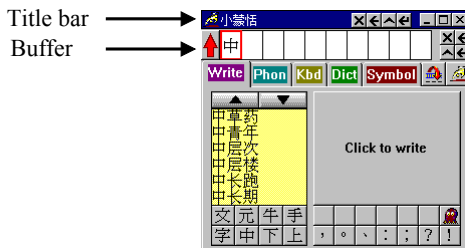
Auto load : Auto execute PenPower Jr. handwriting system when windows start-up.

Title bar : Show / hide the caption of writing-pad.

Buffer : Show / hide the text buffer of writing-pad. If the buffer is displayed, all the recognition result would be put here. After the buffer is full, the first word would be popped out into the caret. You can also click



button to force all the result popped out and clear the buffer anytime. If the buffer is hidden, the recognition result will be send to the caret directly.





Gesture

PenPower Jr. handwriting system support four standard inking gesture. You can handwriting these gestures to simulate keyboard input.

1.Delete : simulate DELETE key.



2.Backspace : simulate BACKSPACE key.



3.Enter : simulate ENTER key.



或



4.Space : simulate SPACE key.



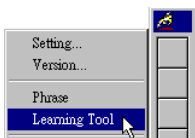
Auto Phrase Correction

The handwriting system adjusts the recognition result according to syntax of phrases automatically. e.g. When you write [夫下太平] on free writing mode, phrase correction would auto correct the wrong word [夫] into [天] because they are similar and [天] is meaningful than [夫]. So, you will get the right recognition result [天下太平].

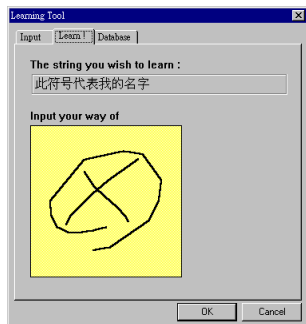
Learning String

A string is represented by an inking of symbol. So, you can handwrite the symbol anytime and the recognition engine will recognize it as the expanded string. It prevents you from redundant writing.

1. Open the main menu. Click [Learning tool].
2. Input the string you want to learn. (10 words at most).



3. Click [Learn!] tag, then write down your inking twice according to the hint.

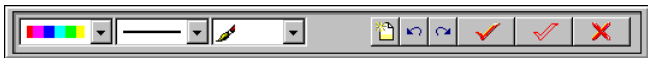
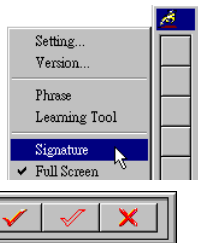


4. Click [Database] tag, You can browse the dynamical inking or modify the string you have ever learned here.



Signature

1. Move the caret to where the signature will be.
2. Open the main menu. Select [Signature].



3. In signature mode, the right button is defined to toggle pen mode and mouse mode. You must switch to pen mode before start to sign your signature. The left button is defined to change color.



: Change the color of inking.



: Change the thickness of inking.



: There three kind of pen style to change.



: Clear all.




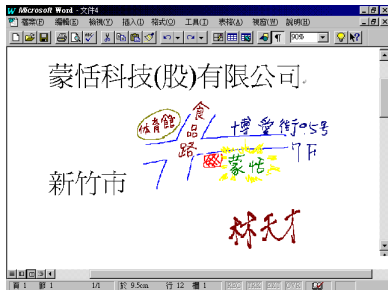
: Undo one stroke.




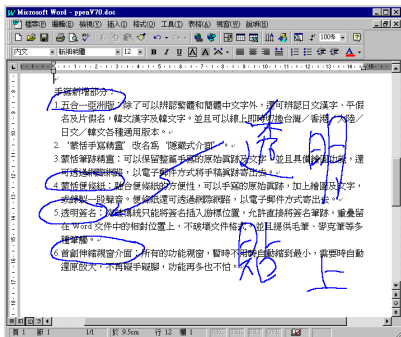
: redo one stroke.

4. Click  button to cancel signature.

5. Click  button to insert your signature in the caret.



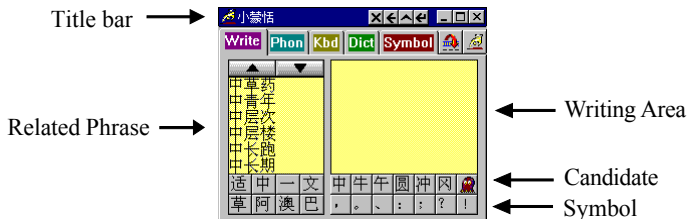
6. Click  button to overlap your transparent signature with WORD or EXCEL document.



NOTE : Transparent signature needs Word97 or Excel97 or above.



Writing-Pad



You need to click the middle button or click on the writing area switching into pen mode before you start writing. The color of writing area will change from gray into yellow.

The left button would be revised for error correction on pen mode. While you press the left button once each time, the latest recognized result would be replaced with the next candidate word. It lets you correct the result quickly without switching to mouse mode.

Click the middle button or click on the writing area again to switch into mouse mode. The color of writing area will change from yellow into gray.



TIP : The writing-pad adopts shrink-expand user interface. It would expand into normal size when the cursor move on it. Otherwise it will shrink as an small icon



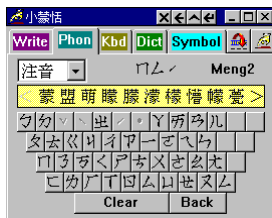
to avoid occupying the screen.

Phonetic Input Tool

There are three types of phonetic input tool, BoPoMo, Cantonese and Beijing by default. You can create your own phonetic input tool.

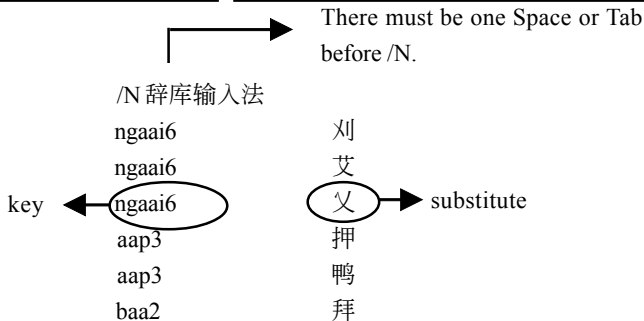
How to Use

1. Select one phonetic input tool of BoPoMo, Cantonese, Beijing or others.
2. Click the phonetic button one by one in order.
3. The converted candidate character would be listed in the text buffer.



How to create Custom Phonetic Input Tool

1. **File format of phonetic data file :** Use any editor, e.g. Word or Notepad, to create a file(xxx.box) formatted as below.



- a. Begin with /N command in a line to assign the name of this custom phonetic Input Tool. N must be uppercase. There must be one Space or Tab before /N. The two words after /N is the respected name.
- b. The KEY must begin with the first character in each line, and could be duplicated. The length of KEY is no more than 16 bytes.
- c. The length of SUBSTITUTE is no more than 2 bytes.
- d. The KEY and SUBSTITUTE is separated by Space or Tab.

2. Database Converter:

Execute Sort_Box.exe application to convert the Custom Phonetic text data file(xxx.box) into binary data file(xxx.boy).

How to use Custom Phonetic Input Tool

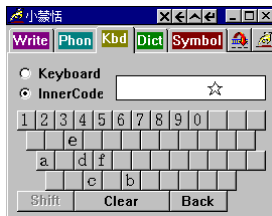
1. Select [其他] item from the combo box to open a dialog.
2. Select the phonetic data file(xxx.boy) that you generated previously in the dialog.



Keyboard Input Tool

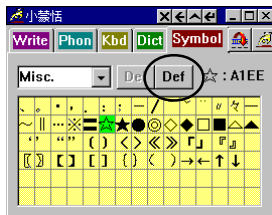
Keyboard : Simulated software keyboard.

Inner Code : e.g. The inner code of [☆] in hexadecimal is A1EE. Click [A],[1],[E],[E] button one by one in order, and then get [☆].



Symbol Input Tool

The special symbols are grouped into multiple pages of table. Select the suitable table and click the symbol what you want to get. It allows you to customize the symbol tables.



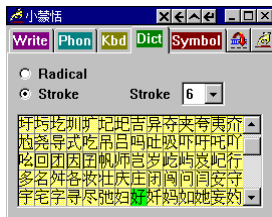


Dictionary Input Tool

Query by stroke :

e.g. Look up the word [好] by total stroke.

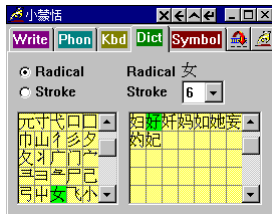
1. Select [Stroke] radio box.
2. The total stroke of [好] is 6.
3. Select 6 from [Stroke] combo box.
4. Click the correct word in the candidate to get [好].



Query by radical :

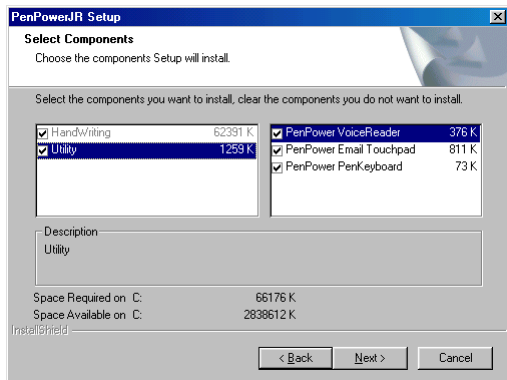
e.g. Look up the word [好] by radical.

1. Select [Radical] radio box.
2. Select radical [女] on the left.
3. Select 6 from [Stroke] combo box.
4. Click the correct word on the right to get [好].



Chapter 5 Advance

When you install PenPower Jr. handwriting software, you can choose custom installation to install the advanced components.

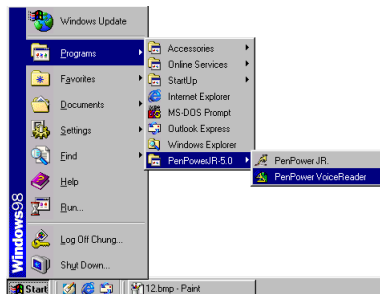



PenPower VoiceReader

Integrate the Text to Speech (TTS) technology to read aloud the Chinese article content within any window.


Use PenPower VoiceReader

1.Run[Start]/[Programs]/[PenPower Jr. 5.0]/[PenPower VoiceReader].






2. After VoiceReader is executed, the small icon  would be displayed on the caption of any window.




3. If you select one paragraph of text first, then click , and select [开始 / 停止朗读]. The selected text will be read aloud. You can choose Mandarin or Cantonese tone pronunciation from the menu.



- 4.If you click  without selection, then select [开始/停止朗读]. The text would be read aloud from caret location.
- 5.You can click , and select [开始 / 停止朗读] again to stop reading.
- 6.Click , select [结束] to exit the PenPower VoiceReader.

Reading Setting

- 1.Click , select [设置] to open the setting dialog.




朗读速度 : Adjust the speed of reading.

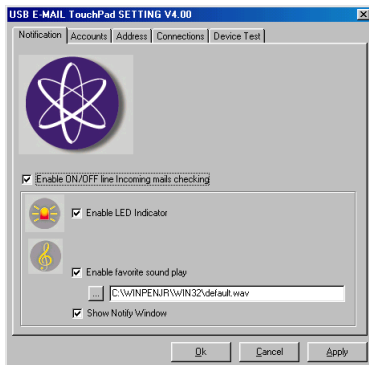
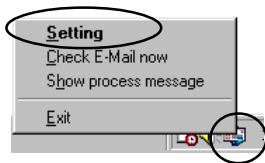
朗读音高 : Adjust the tone of reading.

朗读音量 : Adjust the volume of reading.



PenPower Email Touchpad (for crystal touch USB only)

If you have custom-installed the [PenPower Email Touchpad] component, the email icon  would be displayed on the task bar when the windows start-up. Double-click the icon or right-click the icon to open the menu, and then select [setting]. It will invoke the setting dialog.



Enable ON/OFF line incoming mails checking : Enable/disable the function of auto mails checking

Enable LED Indicator : Blink the LED of touch-pad to hint the incoming emails.

Enable Favorite Sound Play : Change the wav file of music to hint the incoming emails.

Show Notify Window: Show pop-up window to hint the incoming emails.

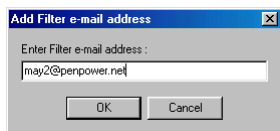
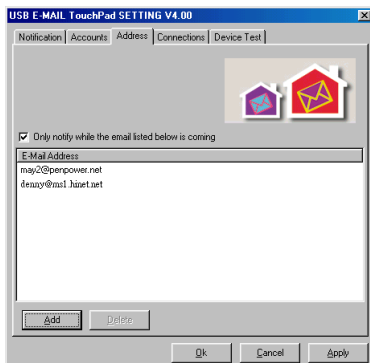
Accounts Management

You can manage multiple accounts to receive all the emails at once.



Email Address filter

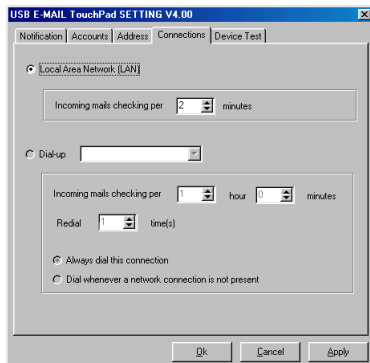
You can filter your unnecessary emails. Check this option to notify you only when the listed email is coming.






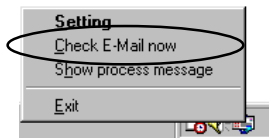
Connection

You can choose to check email through local area network(LAN) or dial-up internet. You can also set the period time to check email. If your system is offline, after dial-up and check email, it will be disconnected automatically.



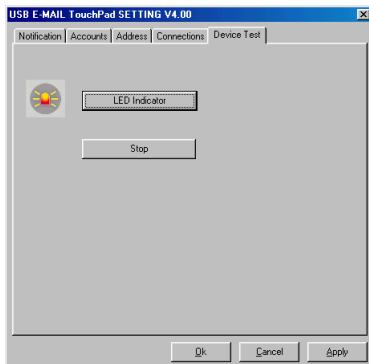
Check email manually

If you want to check email manually, right-click the email icon  to open the menu, and then select [Check Email now].




Device Test

You can click [LED Indicator] button to test if the LED of touch-pad is normal.





PenPower Hot Key

If you have custom-installed the [PenPower PenKeyboard] component, the HotKey icon  would be displayed on the task bar when the windows start-up. You can press [Ctrl + F1 ~ F12] key to quickly connect to the default web site.

Customize the Hot Key

If you want to customize the Hot Key, click the HotKey icon to open the menu, and then select [PenPower HotKey Setting]. You can revise F4 ~ F12 only.



Chapter 6 DOS Version

Invoke PenPower Jr. Handwriting System

- 1.Run Chinese system first, e.g. ETEN.
- 2.Go to the directory where PenPower Jr. handwriting system for DOS is installed, and then run GO.

The default installed path as following :

Traditional Chinese version:C:\WINPENJR\DOS_TW

HongKong version: C:\WINPENJR\DOS_HK

Simplified Chinese version: C:\WINPENJR\DOS_GB

Exit PenPower Jr. Handwriting System

- 1.Go to the directory where PenPower Jr. handwriting system for DOS is installed, and then run QUIT.
- 2.If the Chinese system closed, the PenPower Jr. handwriting system would exit also automatically.

Data Input

- 1.Handwrite words on the touch-pad.
- 2.You can only write one word at one time.
- 3.The recognized result would be sent into the caret location.



Update the Result

If the latest recognized result is wrong, and the correct result word is in the candidate list, while you press the left button once each time, the result would be replaced with the next candidate word.

PenPower Jr. V5.0 Manual

Copyright(c)1991-2000 PEN POWER TECHNOLOGY LTD.

POST ACCOUNT NAME: PEN POWER TECHNOLOGY LTD.

ACCOUNT NUMBER: 19211888

TAIWAN

Head Office

7F, No.47, Lane 2, Sec. 2, Kuang-Fu Road, HsinChu City, Taiwan R.O.C.

TEL : G(886)3-5722-691 FAX : (886)3-5716-243

HOME PAGE: <http://www.penpower.net>

SALES

GRANDPOWER TECHNOLOGY LTD.

9F, No.293-3, Sec.2, Fu-Hsing S.Road, Taipei Taiwan R.O.C.

TEL : (886)2-2735-9922 FAX : (886)2-2735-5500

4F-F, No.161, Kung-Yi Road, Taichung, Taiwan, R.O.C.

TEL : (886)4-2305-9922 FAX : (886)4-2305-9900

7F-3, No.2, Chiek-Kuo 2nd Road, KaohSiung City, Taiwan R.O.C.

TEL : (886)7-2223-811 FAX : (886)7-2223-290

PEN POWER TECHNOLOGY LTD. has hired me as legal consultant, should there be any infringement of its intellectual property or other legal rights, I should protect its legal benefits according to the law.

Stacy Lee

BAKER & MCKENZIE

Overseas Hot Line Service

HONGKONG, CHINA

LONGRAND ELECTRONICS LTD.

Unit 4,22/F., Wharf Cable Tower,9 Hoi Shing Rd.,Tsuen Wan,H.K.

TEL : (852)2498-6803

FAX : (852)2402-1918

E-Mail : tech@longrand.com.hk

GUANGZHOU, CHINA

蒙恬科技发展有限公司

广州市天河区工业园科韵路 18 号软件园大楼第六层

TEL : (86)20-85544008

FAX : (86)20-85545722

E-Mail : gzricher@public1.guangzhou.gd.cn

MALAYSIA

Compusonic Computer Centre

TEL : (60)4-2827268,2827269

FAX : (60)4-2825258

106-B, Tan Sri Teh Ewe Lim Road,11600 Penang

SINGAPORE

Longrand Electronics (S) Pte Ltd.

TEL : (65)3423466

FAX: (65)3420577

150, Kampong Ampat, #04-04A KA Centre, Singapore 368324.

U.S.A

Alestron, Inc

TEL : 1-650-9698535

FAX : 1-650-9698545

2158 Old Middelfield Way Mountain View, CA 94043 U.S.A

AUSTRALIA

ACCA Computers Inc.

TEL : 1-604-278-6227

FAX : 1-604-278-8627

Unit 8, 3671 Viking Way,Richmond, B.C. V6V 2J5