

# **EZ Go Jr. User Manual**

Version: V1.0

Release: November, 2009

# **Penpower Technology Ltd.**

## **Software User License Agreement**

You are licensed to legally use this software program (“the Software”) by Penpower Technology Ltd (“Penpower”) under this license agreement (“The Agreement”). If you do not agree with any of the provisions in this Agreement, please do not install, copy or use the Software. By using the Software, you are deemed to fully understand and accept the provisions of this Agreement.

### **1. Intellectual Property**

All intellectual property rights in the Software, together with all information and documents included in the packaging for the Software (including but not limited to copyrights), are property of Penpower, and are protected by relevant laws and regulations.

### **2. License to Use**

You are authorized to use the Software on one (1) single computer only. You may not use the Software on any other machines other than the said single computer.

### **3. Authority to Copy**

The Software and all documents included with the Software, and copyright thereof, are property of Penpower. You are licensed to make one (1) copy of the Software for your personal backup purposes. All other acts of copying are strictly prohibited.

You may not sell, lease, disassemble, reverse engineer, copy, translate, adapt or derive the Software, or obtain the source code of the Software by any other means. You may not use the Software for any purposes other than those permitted under this Agreement.

### **4. Business Users**

If you need to install or use the Software on more than one (1) computer, please contact Penpower or our local distributor to purchase a license for the additional use.

### **5. Liability**

You agree to indemnify Penpower against all losses, costs, debts, settlement payments or other expenses (including but not limited to attorneys fees) arising from your breach of this Agreement, and you agree to compensate Penpower for all of the abovementioned damages.

### **6. No Warranty**

Effectiveness of a packaged software in handling information is closely related to its software and hardware environment. The Software is published following careful development and product testing by Penpower, but Penpower is not able to conduct tests based on all possible combinations of software and hardware environment. Therefore, Penpower is unable to promise nor warrant that there will be absolutely no risk of loss or damage of

information, or any other kind of loss, during installation and/or execution of the Software. You must be fully aware of your risks in using the Software.

Penpower will provide you with the Software and support services in respect of the Software to the maximum extent permitted by law. However, Penpower does not warrant that the Software and information included in the package of the Software contain no defects or errors. Penpower is not liable for any indirect, special or incidental loss arising from the Software, including but not limited to loss of profits, damage to business reputation, cessation of work, hardware malfunction or damage, or any other commercial damage or loss arising from commercial use of the Software.

#### **7. Limitation of Liability and Damages**

The maximum amount of compensation payable by Penpower, in respect of any damage incurred by you for any reason under this Agreement, is limited to the amount you have already paid to Penpower in respect of the Software.

Under no circumstances will Penpower be held liable for the possibility of loss, notwithstanding Penpower may be aware of the possibility of such loss.

#### **8. Prohibition Against Sublicense**

You are prohibited to assign the license in respect of the Software granted to you under this Agreement, or to grant a sublicense to another person.

#### **9. Jurisdiction**

With regards to any disputes arising from this Agreement, Penpower and you agree that the court having jurisdiction over the business location of Penpower will be the court in the first instance.

#### **10. Miscellaneous**

In the event that any provision of this Agreement is found to be invalid at law, such invalidity will not affect the validity of any other provisions, or the legal enforceability of such other provisions.

In the event that the Software cannot be executed under conditions of normal use, due to any damage to the original disk/s, Penpower will replace the disk/s free of charge.

# Contents

<b>Chapter 1 Product Overview .....</b>	<b>1-1</b>
1.1 Hardware Introduction .....	1-1
1.2 Product Features .....	1-2
<b>Chapter 2 Installation and Settings.....</b>	<b>2-1</b>
2.1 System Requirements .....	2-1
2.2 Hardware Connection.....	2-1
2.3 Run EZ Go Jr. Handwriting System.....	2-1
2.4 Registration .....	2-2
2.5 Calibration .....	2-3
<b>Chapter 3 New Pen Mode.....</b>	<b>3-1</b>
3.1 Switching Modes .....	3-1
3.2 Toolbar.....	3-2
3.3 Phrase .....	3-3
3.4 Full Screen Writing .....	3-4
3.4.1 How to Write.....	3-5
3.5 How to Quickly Correct, Enter Phrases and Symbols.....	3-6
3.6 Balloon UI .....	3-7
3.6.1 Phrase Correction .....	3-8
3.6.2 Artificial Intelligence .....	3-9
3.6.3 Split.....	3-10
3.6.4 Merge .....	3-10
3.6.5 Homophone.....	3-11
3.6.6 Related word .....	3-11
3.6.7 Online Translation.....	3-12
<b>Chapter 4 PenpowerMouse Mode .....</b>	<b>4-1</b>
4.1 Mouse Mode Operation.....	4-1
4.2 Artificial Intelligence.....	4-1
4.3 Learning String.....	4-1
4.4 Update Phrase Database .....	4-3
4.5 Signature.....	4-5
4.6 Online Translator .....	4-6
4.7 Input Words by Related Phrase .....	4-8
4.8 Settings .....	4-9

4.8.1 Recognition Setting.....	4-9
4.8.2 General Setting.....	4-11
4.8.3 Writing Setting.....	4-11
4.8.4 Switch Version .....	4-12
<b>Chapter 5 Writing Application .....</b>	<b>5-1</b>
5.1 Gesture.....	5-1
5.2 Mix Traditional and Simplified Writing.....	5-1
5.3 Export/Import Personal Handwriting Data.....	5-2
5.4 Software Upgrade.....	5-3
5.5 Using EZ Go Jr. in MSN Messenger.....	5-4

There may be newer versions of the software that was released during or after this product's manufacturing date. If the content in the User Manual differs from the on-screen interface, please follow the instructions on the on-screen interface instead of the User Manual.

# Chapter 1 Product Overview

EZ Go Jr. lets you take the handwriting recognition software and your personal handwriting script information on the go. No need to install EZ Go Jr. in any computer. All you need to do is plug the EZ Go Jr. into the computer and then you can use handwriting recognition immediately.

## 1.1 Hardware Introduction

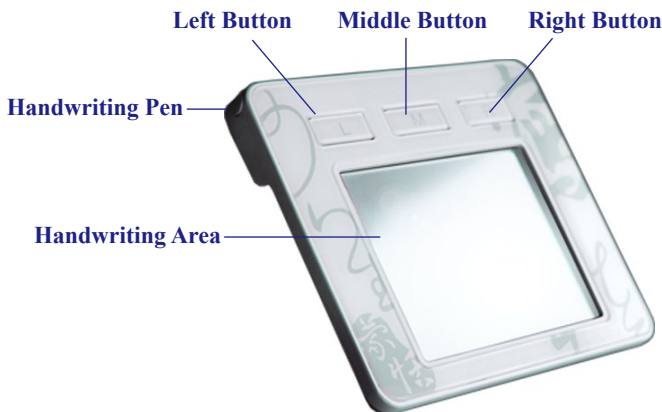
Dimensions: 105 x 86 x 11 mm

Writing area: 68 x 45 mm

Weight: 55g

Hardware buttons:

- Left button: Change the recognized character with the candidate character.
- Middle button: Switch between New Pen mode and Penpower Mouse mode.
- Right button: Input/Switch common-used symbols.





## 1.2 Product Features

### **Plug and Write**

No need to install EZ Go Jr. in any computer. All you need to do is plug the EZ Go Jr. into the computer and then you can use handwriting recognition immediately.

### **All in one recognition kernel of Big5 and GB**

The character set can be recognized including more than 23000 Chinese words, 4818 Hong Kong words, alphabet, numeric, symbol, Hiragana, and Katakana. Support unicode system to input Traditional and Simplified Chinese easily.

### **Full screen free writing**

You can handwritten several words at one time before recognition with the visual user interface. Just point the cursor on a word and the hidden Balloon UI appears.

### **Smart Handwriting/Mouse mode**

This brand new Penpower mouse is more intuitive and easier to use. Additional symbols and symbol shortcuts are also provided for your convenience.

### **Artificial intelligence recognition kernel**

After you correct the recognition result from candidate or AI dialog, the system will modify its recognition database to adapt your personal writing style. This would improve the recognition rate for yourself.

### **Other auxiliary function**

Provide many useful functions, such as related phrase, related word, special symbol table, homophone, dictionary, learning string, color inking and sound effect...etc, to make input easier.

### **Word learning wizard**

All new word learning wizard mode makes it easy to set up and manage learning dictionary.

### **Signature**

Directly super-impose your signature at the desired area in a Word or Excel document without disrupting the document layout. Or insert your signature into the email of Outlook, Outlook Express or Windows Mail etc. and send it to other people.

### **Inking on MSN messenger**

If you have MSN Messenger 6.1 or above installed, you can transmit handwriting and hand-drawn graphics on MSN Messenger for that extra personal touch.

## Chapter 2 Installation and Settings

### 2.1 System Requirements

1. Intel Pentium II CPU or above
2. 256MB RAM
3. 200MB of available hard disk space
4. Windows 7/Vista/XP

### 2.2 Hardware Connection

Plug the USB cable to the EZ Go Jr. handwriting pad and the USB port of your computer.

*Note: 1. When first time connecting your EZ Go Jr. handwriting pad to your computer, the system may take some times to recognize it.*

*2. Sometimes, when you connect the EZ Go Jr. handwriting pad, the system may pop-up a window to ask you restart your computer. Please ignore it.*

### 2.3 Run EZ Go Jr. Handwriting System

After connecting your EZ Go Jr. handwriting pad to the USB port of your computer, the EZ Go Jr. handwriting system will be launched automatically.

*Note: 1. If your Windows OS is Vista or higher version, the system will display an Auto-Run menu when the EZ Go Jr. handwriting pad is connected. Please select [Run EZ\_Go\_Jr.exe] to launch EZ Go Jr. handwriting system.*


*2. EZ Go Jr. handwriting pad contains two flash discs. The first flash disc is for storing EZ Go Jr. handwriting system program files. The second flash disc is for EZ Go Jr. handwriting system data. Please DO NOT format any disc to destroy the program files or data.*

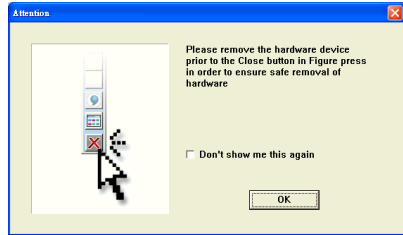
*Tips: 1. If your computer cannot automatically launch the EZ Go Jr. handwriting system, you can run EZ\_Go\_Jr.exe from the first flash disc to launch the EZ Go Jr. handwriting system manually.*

*2. When launching the EZ Go Jr., the system will also open a Windows Explorer and view the second flash disc. It can be also used as a regular flash disc to store your data.*



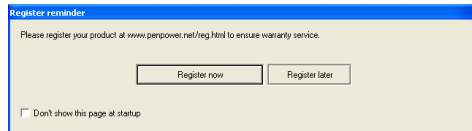


When running the EZ Go Jr. handwriting system for the first time, the system will display an Attention window. Please follow the instructions to click the Close  button when you want to exit the EZ Go Jr. handwriting system. And then disconnect the EZ Go Jr. handwriting pad.



## 2.4 Registration

A register reminder window will pop up when you launch EZ Go Jr. handwriting system for the first time. It reminds you registering your product at <http://www.penpower.net/reg.html> for ensuring the warranty service. Click [Register now] to register. If you click [Register later], you may go to [About/Register] when you need.

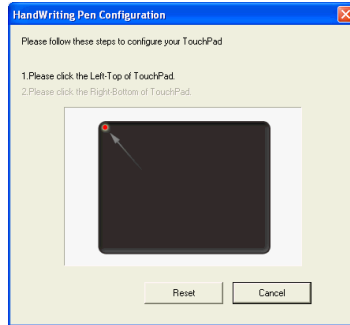



## 2.5 Calibration

When you first time launch the EZ Go Jr. handwriting system, the system will ask you to calibrate the EZ Go Jr. handwriting pad.

1. Click on the top-left corner spot of touch pad by the writing pen.
2. Click on the bottom-right corner spot of touch pad by the writing pen.
3. Click on [OK] to finish the calibration.

**Tip :** *After calibration, the new configuration would take effect immediately. You do not need reboot or reload EZ Go Jr. handwriting system.*



In the future, if you find that your handwriting on screen is not on the right location, you need to calibrate your EZ Go Jr. handwriting pad. Please mouse click menu  icon and select calibration to launch the calibration window.






## Chapter 3 New Pen Mode

### 3.1 Switching Modes

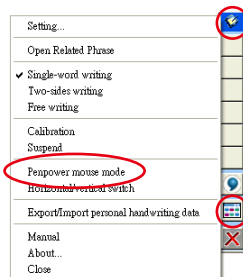
EZ Go Jr. handwriting system provides New Pen mode and Penpower Mouse mode. The [New Pen mode] provides writing and recognition functions. You can select the candidates, related words, phrases and symbols via mouse.

In the [Penpower Mouse mode], you can use the EZ Go Jr. and the stylus as the mouse to select the candidates, related words, phrases and symbols. It also provides handwriting inking review, and some function buttons such as AI, learning tool, phrase, signature and on-line translator.

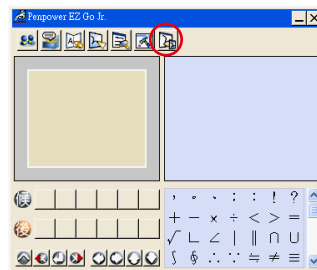
When the EZ Go Jr. handwriting system is launched, it will display the [New Pen mode]. Left mouse click on the [Menu]  button or right mouse click on the  to open the options menu. Select [Penpower mouse mode] to switch to the [Penpower Mouse mode].

In the [Penpower Mouse mode], click on the [Switch]  button to switch back to the [New Pen mode].

**Tip: Press the middle button of the EZ Go Jr. handwriting pad to switch between New Pen mode and Penpower Mouse mode.**



New Pen mode

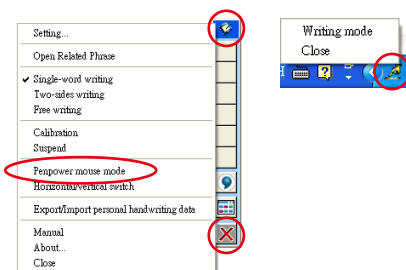


Penpower Mouse mode



## 3.2 Toolbar

When you run EZ Go Jr., the vertical [New Pen mode] toolbar will appear. You can write words on the EZ Go Jr. handwriting pad to input words. Right click the mouse on the or click menu to open the menu. Double click to close the [New Pen mode] toolbar temporarily. Click and select [Writing mode] to open the [New Pen mode] toolbar.




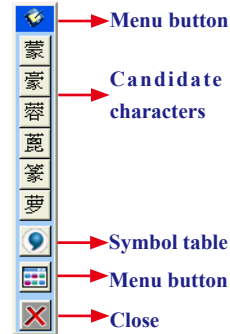
The [New Pen mode] provides vertical and horizontal layout of the toolbar. Click button to select the layout of the toolbar.



**Horizontal Toolbar**

The candidate area of the [New Pen mode] provides you to promptly correct the recognized words, for example when you wrote ‘蒙’, and it recognized to ‘豪’, you can select ‘蒙’ from the candidate area via the mouse.

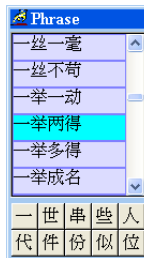
Click the symbols table  button via the mouse to open the symbols table and enter the corresponding punctuation symbol.





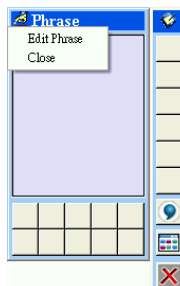
### 3.3 Phrase

[New Pen mode] also provides [Phrase] window for inputting related phrase fast.

1. Write the first character, for example you want to input [一举两得], you can write [一].
2. Click the phrase you wish to input in the [Phrase] window, the phrase will be input to your cursor location.



If you do not need to use [Phrase] function, you can mouse click the top-left corner  and select [Close] to close the [Phrase] window. When you need it, click the toolbar menu  button and select [Open Related Phrase] to open it.





## 3.4 Full Screen Writing

There are three different options of the handwriting methods in the main menu.

### Single-word writing

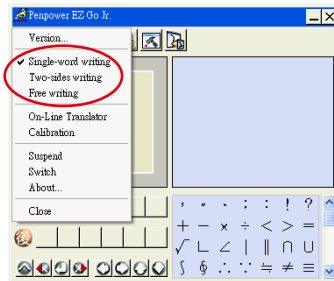
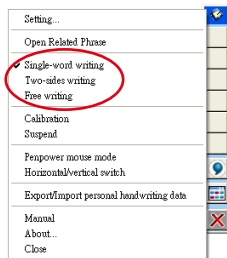
It is allowed to handwrite one word only at one time. You can not handwrite the next word until the recognition result of current word has been finished.

### Two-sides writing

After the first stroke is written, one vertical line would be displayed on the center of screen. All the strokes written on the same side would be considered as part of one word. When a new stroke is crossed to the other side, it means that the last word is finished and the next word start to write.

### Free writing

You can handwrite multiple characters before recognition at one time. Forty one characters at most is allowed. It permits left-to-right, or top-to-bottom free writing order. Remember to keep adequate distance between two contiguous words when you write. It affects the result of character segmentation.



### 3.4.1 How to Write

It would be better to keep strokes of the same word closed, and do not overlap between words when you write. You need to finish writing every strokes of one word.

#### Right example

Write three words of 『明日月』.



#### Wrong example 1

Overlap between two words. All the strokes may be recognized as one word.



#### Wrong example 2

The two parts of one word are written far away from each other. All the strokes may be segmented into two words.




#### Auto Phrase Correction

The system automatically proofreads on your writing content to improve the recognition rate. For example, when you continuously write 『天下太平』 four characters, but the character 『天』 is incorrectly written as 『夫』, so they become 『夫下太平』. Penpower uses its internal phrase dictionary to correctly recognize your intended result 『天下太平』.



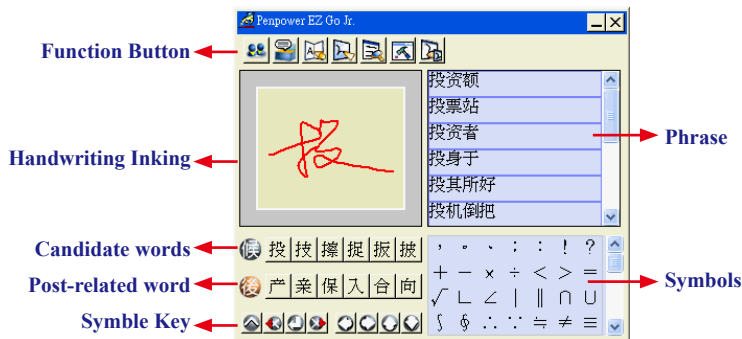


### 3.5 How to Quickly Correct, Enter Phrases and Symbols

When writing, candidate words based on the previous input will be displayed on the [New Pen mode] toolbar. Each press of the left function button on the EZ Go Jr. will move the candidate words forward by one and also correct the results. Alternatively, select a candidate word on the [New Pen mode] toolbar to correct it. Click the [Symbol table]  button with the mouse to open the [Symbol table] and enter the corresponding punctuation symbol; the right function button of the EZ Go Jr. provides the same symbols.

You can also press the middle button on the EZ Go Jr. to switch to the [Penpower Mouse mode]. In the [Penpower Mouse mode], you can select the candidate word, post-related word, phrase or symbol.

For example: In [New Pen mode], the input 『蒙恬科技』 had the character 『技』 mis-read as 『投』. You can press the middle button on the EZ Go Jr. to switch to the [Penpower Mouse mode] then choose from the candidate words field 『技』 to correct the mistake. Once corrected, press the middle button on the EZ Go Jr. to switch back to the [New Pen mode] and continue writing.








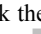
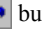

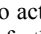
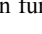
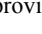
### 3.6 Balloon UI

This unique user interface let you edit recognition result freely in any application. The visual user interface is hidden transparently. When you want to correct some word, just hover your mouse over this word for a few seconds. The [Balloon toolbar] will display on the cursor position.

蒙恬气泡式介面




**Tip :** *To display the [Balloon toolbar], you do not need to press any button, just hover your cursor on the word you want to correct.*



In the [Balloon toolbar], click candidate words, the AI button , the homophone , the pre-related word , the post-related word , or the phrase correction  to correct your result. Click the  button to see the raw image of your strokes. Click the  button to open the tutor. Click the  button to input punctuation symbol. Click the  button to split one word. Click the  button to merge one word with next. The  is to activate the Chinese-English translation function. Details about this function are provided further on in the manual.

**Note:** *In the [New Pen/Mouse mode], the [Balloon toolbar] can only be operated with the computer mouse.*

**Note:** *[Balloon toolbar] can be used in Office, IE, WordPad, but in Windows XP and Vista 64 bit systems, it can not be used in some software, except NotePad.*

### 3.6.1 Phrase Correction

If you wish to enter a common phrase such as an idiom, and you are not sure of how to write one of the characters you can substitute a similar sounding character instead. If you are not sure of the character's pronunciation either, choose any at random. When you have finished writing the phrase, select the uncertain character with the mouse then click on the phrase correction  button. The system will examine the four characters before or after this particular character to guess what you meant and make the change.

1. If you want to input an idiom such as 『拔苗助长』, and you are not sure of how to write the character 『拔』, you can write the character 『一』 instead to input 『一苗助长』.
2. Hover your mouse over the character 『一』 and wait for a moment to display the [Balloon toolbar]. Click the phrase correction button  and the 『一』 character will be changed to 『拔』.
3. If the phrase correction function came up with multiple candidate words, these will be shown in the candidate words window for you to choose from. For example, if the input was 『股份一限公司』 when you hover your mouse cursor on the 『一』 character to display the [Balloon toolbar]. Pressing the phrase correction button  will bring up a list of all phrase correction candidate words for you to choose and make the correction with.
4. Click the character you want to input from the list.

一苗助长

一苗助长



拔苗助长

股份一限公司



### 3.6.2 Artificial Intelligence

When you use candidate word or AI button to correct result, the system will modify its recognition database to adapt your personal writing style to improve the recognition rate.

1. Write some words. The result would be sent to your cursor location.

2. For example you wrote 『蒙恬科技』, but 『恬』 is wrongly recognized as 『恰』.


蒙恰科技

3. Hover your mouse over the word 『恰』 for a while to display the [Balloon tool-bar].

蒙恰科技

蒙恬科技

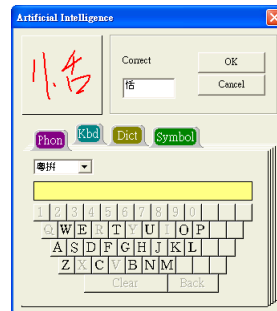
4. Click the candidate word if the correct word is there.


5. Otherwise click the AI button  to open the AI correction dialog.

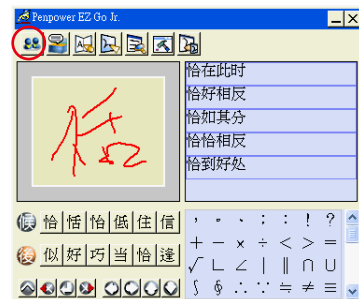


6. Input the correct word 『恬』, and then click [OK].

7. You will see the wrong result 『恰』 is already updated as 『恬』. Your personal writing style has also been learned.




**Tip:** You can also press the middle button on the EZ Go Jr. to switch to the [Penpower Mouse mode]. If the correct word appears among the candidate words, simply click on it to make the change. If the correct word is not among the candidate words, press the [Penpower AI]  button to open the AI dialogue field to train the software.





### 3.6.3 Split

When two words are written too close, they may be recognized as a single word. You can use split function to separate it into two words.

1. For example, when you write four words 『日月星辰』.
2. If 『日』 and 『月』 were written too close, you may wrongly get three words of result 『明星辰』.
3. Hover your mouse over the word 『明』 for a while to display the [Balloon toolbar].
4. Click  button to separate 『明』 into 『日』 and 『月』.

明星辰


明星辰|


明星辰|



日月星辰|

### 3.6.4 Merge

When some strokes of one word are written far away from each other, the system may recognized it as several words. You can use merge function  to combined them into one word.

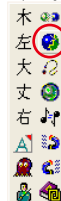
1. Write two words 『栋梁』, the recognition result will be sent to the cursor location.
2. If 『木』 and 『东』 is written far away from each other, you may wrongly get three words of result 『木东梁』.
3. Hover your mouse over the first word 『木』 for a while to display the [Balloon toolbar].
4. Click  button to merge 『木』 and 『东』 into 『栋』.

木东梁

木东梁|

木东梁

栋梁|



**Note : Only two continuous words could be merged at one time.**



4. Hover your mouse over the word 『料』 for a while to display the [Balloon tool-bar].
5. Click button to open the window of post-related phrases. If the correct phrase 『科技』 is in the list, click it to update the result.
6. You will see the wrong result 『蒙恰料技』 is already updated as 『蒙恬科技』 at last.

蒙恰料技

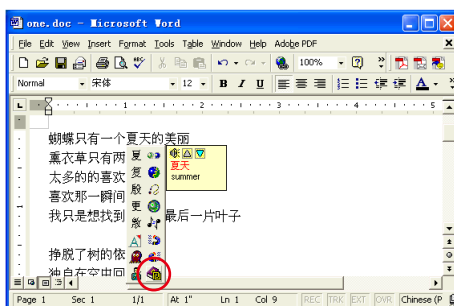


蒙恬科技

### 3.6.7 Online Translation

The [Online translator] is used in the balloon interface. When you want to look up a character's translation, select button from the candidate window.

1. Handwriting [夏天], for example.
2. Hover your mouse over [夏天].
3. Click , a translation window will appear to show the translation of [夏天].



## Chapter 4 PenpowerMouse Mode

After writing a character in the [New Pen mode], you can press the middle button on the EZ Go Jr. to switch to the [Penpower Mouse mode]. In the [Penpower Mouse mode], you can select the candidate word, post-related word, phrase or symbol etc.




### 4.1 Mouse Mode Operation

1. Moving: Put the pen on the EZ Go Jr. handwriting pad, and then move it on the panel gently.
2. Click: Hit the EZ Go Jr. handwriting pad once.
3. Dragging: Hit the EZ Go Jr. handwriting pad twice quickly, hold and move the pen on the panel while second pen down.
4. Double click: It the EZ Go Jr. handwriting pad twice quickly.



### 4.2 Artificial Intelligence

When writing a word in the [New Pen mode], you can push the middle button for switching to the Penpower Mouse mode. You can click [Artificial Intelligence function]  to adapt your personal writing style. Please refer to 3.6.2 for details.

### 4.3 Learning String

A string is represented by a single symbol. You can write the symbol anytime and the recognition engine will recognize it as the entire string, minimizing needless writing.

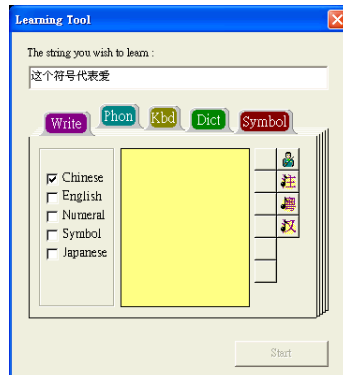




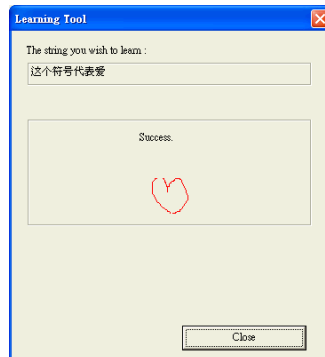
1. In Penpower Mouse mode, click the **Learning Tool** button and click **Learn String**. The **Learning Tool** dialog box displays.



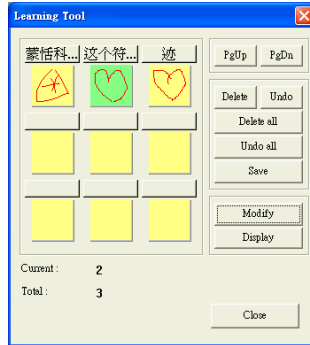
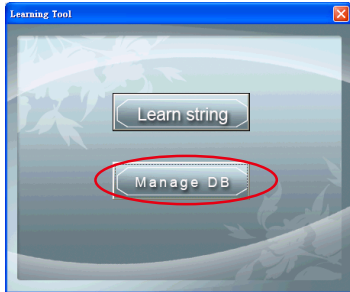
2. Enter the string you want to learn, then click **Start**.



3. Write your symbol twice according to the instructions.



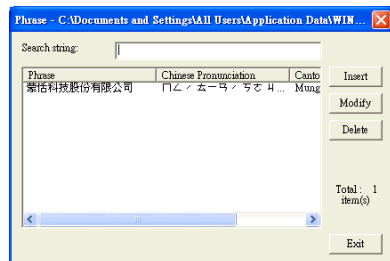
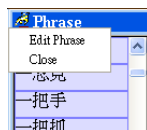
4. Click the [Manage DB] tag. You can browse through the animated symbols for strings or any of the strings you have assigned a symbol to.



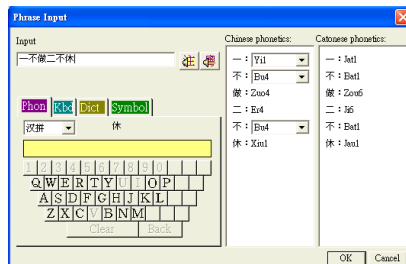
## 4.4 Update Phrase Database

There are thousands upon thousands default phrases that you can use in the Penpower handwriting recognition. It also allows you to customize the phrase database to meet your needs.



1. In [Penpower Mouse mode] press the [Phrase] button. Or in [New Pen mode] select [Edit Phrase] from the Associations Dictionary and open the [phrase] dialogue.



2. Click [Insert] to open the [Phrase Input] dialog. You can input a new phrase here. e.g. If you want to insert 『一不做二不休』 as a phrase, input 『一不做二不休』.





You need to update the phonetics on the right side. Click  /  button to hear their pronunciation and check if the one you choose is right.

***Note : The maximum length of one phrase is 200 word. In fact, the phonetics is only for VoiceReader to read text with right sound of phonetics. If you do not care, you can skip it.***

Click [OK] to finish insertion. Afterward, if you write 『一』, then 『一不做二不休』 would be displayed in the related phrase window. Just click it to input.

3. Selet on phrase from the list, and then click [Modify] to update the phonetics of this phrase. Click [Delete] to delete this phrase from database.
4. In [Search string] field, you can only input part of a phrase to find this phrase quickly.
5. You can use [New], [Open], [Save], [Save As] function to manage your phrase database (\*.yib).

***Note: Although you can create several phrase database, you can only choose one at one time.***

#### 6. Import file

Click [Import] and select one phrase database(\*.yib) or text file to import it into current database.

The text file format must follow this rule - one phrase in each line. You can edit it by any editor, e.g. NotePad.

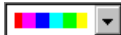
***Note: Every imported phrase would own phonetecs by default. Their phonetics may be wrong. You can modify them from phrase dialog.***

## 4.5 Signature

1. Move the cursor to where the signature will be.
2. Open the [Penpower Mouse mode] and press the [Signature] button. The [Signature toolbar] screen will be shown.



3. In signature mode, the left button is defined to change color.



: Select the color of inking.



: Select the thickness of inking.



: Select the pen style.





: Clear all.

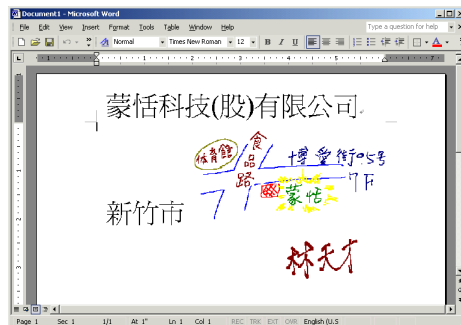



: Undo one stroke.



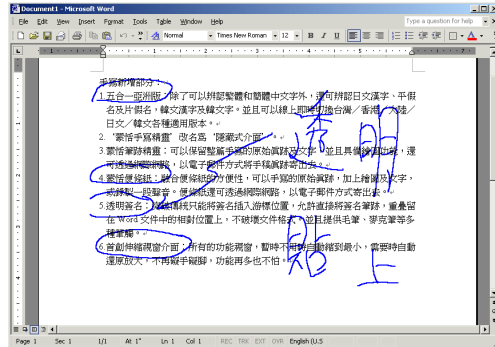
: Redo one stroke.

4. Click  button to cancel signature.
5. Click  button to insert your signature at the position of your cursor.



6. Click  button to overlap your transparent signature with MS Word or MS Excel document.

*Note: You can use the transparent signature in the latest version of Word and Excel, but Office 2007 does not support this function. You may make notes and commentary by using the transparent signature feature.*

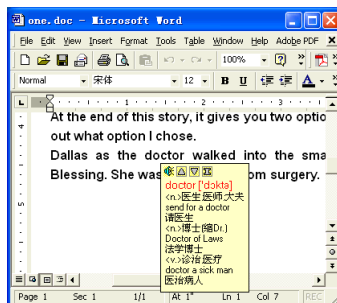
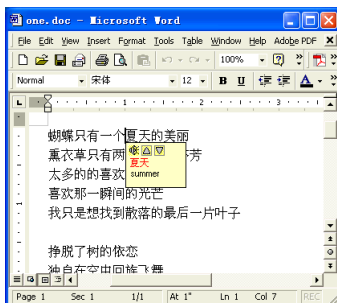


## 4.6 Online Translator

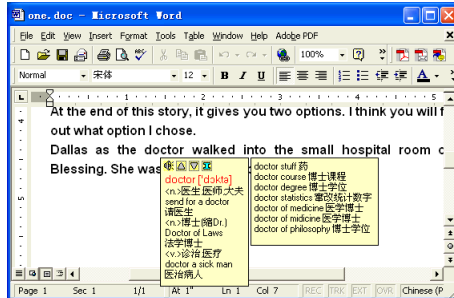
1. Open the [Penpower Mouse mode] and press the [Online Translator] button to open the Online Translator function. Press the button again to close the function.




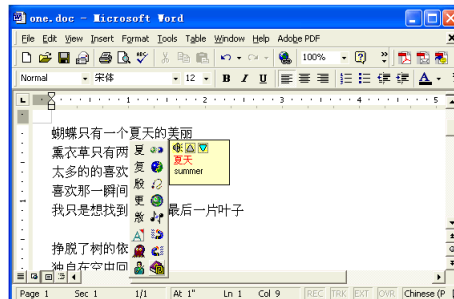
When reading English or Chinese articles, if you encounter unknown characters or phrases, Hover your mouse over the characters, and a translation window pops up to explain them for you.



When you move your mouse outside the interactive scope, the window will disappear. In the window, you can press the play button or character or phrase explanation buttons.



The [Online translator] is used in the balloon interface. When you want to look up a character's translation, select  button from the candidate window.



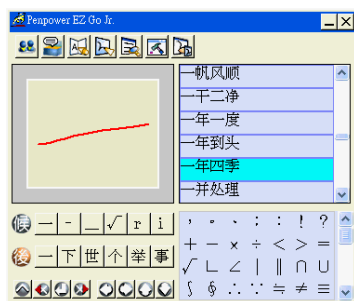


## 4.7 Input Words by Related Phrase

Phrase function provides the related phrases for inputting phrases quickly.

1. Write down the first word of one phrase. e.g. If you want to input the phrase 『一年四季』, just write the first word 『一』.
2. Press the second button on the right side of the EZ Go Jr. to switch to the Penpower Mouse mode. All the phrases beginning with this word 『一』 will be listed on the phrase area of the Penpower Mouse mode.
3. Click the phrase or memorized word that you want to send it into the caret. e.g. 『一年四季』.

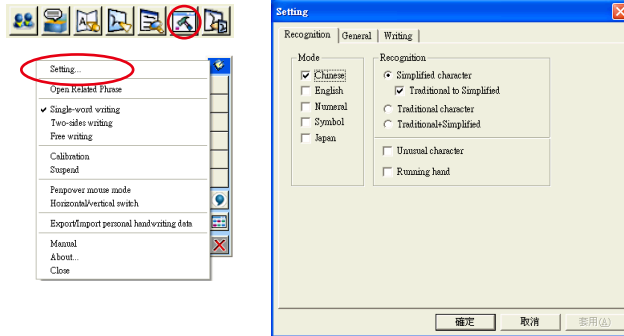
一



一年四季

## 4.8 Settings

In [Penpower Mouse mode] click on the [Setting] button or in [New Pen mode] choose the [Setting...] from the menu to open the settings page. You can configure the recognition engine, output format or writing inkings here.



### 4.8.1 Recognition Setting

#### Mode

The recognition mode of Chinese, English, Numeral, Symbol and Japanese could be turned on/off individually. You could turn on several modes at the same time.

#### Recognition

1. Simplified character: All of the results are in Simplified Chinese. If you do not know how to write traditional characters, you can select [Traditional to Simplified] so your writing is not recognized incorrectly as Traditional Chinese.

**Note:** [Traditional to Simplified] option is available only when you switch to simplified version.

2. Traditional character: All of the results are in Traditional Chinese.
3. Traditional+Simplified: You will get traditional characters while using traditional writing, and you will get simplified words while using simplified writing.





### Unusual character

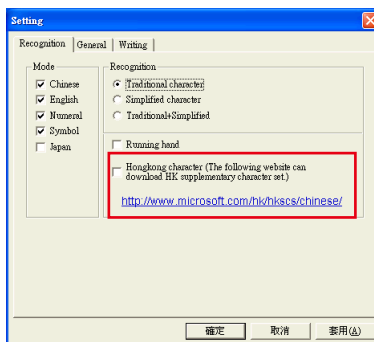
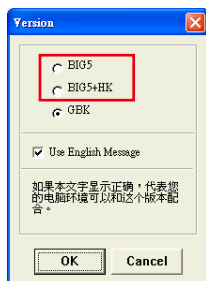
The system will recognize some unusual words only when you turn on [Unusual character] option.

### Running Hand

Select this option to recognize run-on cursive.

### Hongkong Character

This recognition mode is available only when the EZ Go Jr. set to [BIG5] or [BIG5+HK]. Please refer to 4.7.4 Switch Version. You can connect to <http://www.microsoft.com/hk/hkscs/chinese/> to check the Hongkong characters list.



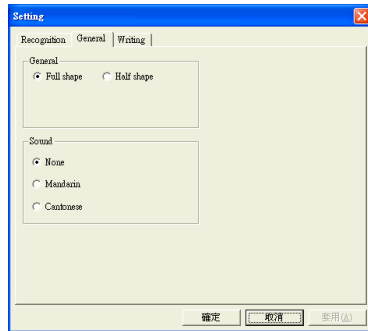
## 4.8.2 General Setting

### Half shape/Full shape

To decide whether the handwriting result of alphanumeric is recognized as one-byte or double-byte character.

### Sound

Pronounce the character in Mandarin or Cantonese immediately after recognition.



## 4.8.3 Writing Setting

### Ink color

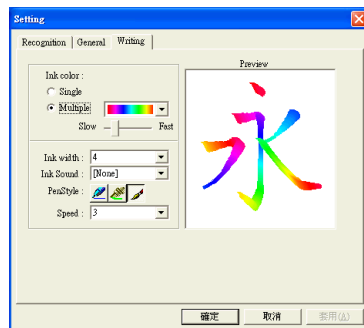
Select the color of inking. You can adjust the smoothness of color gradation when selecting [Multiple].

### Ink width

Select the thickness of inking.

### Ink sound

Select the sound effect while writing.



### Pen style

Select the pen style.

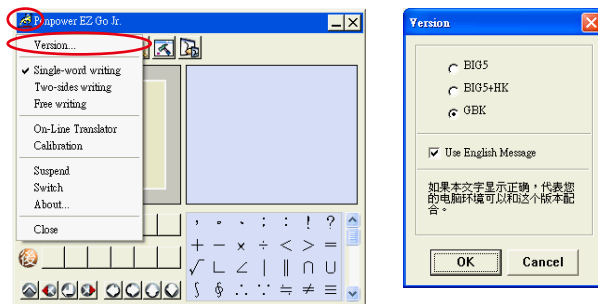
### Speed

Select the writing speed. The less the relative value is, the shorter the timeout for recognition after you've stopped writing.



## 4.8.4 Switch Version

1. In [Penpower Mouse mode], click  icon, then click [Version...].



2. In the Windows operating systems for Traditional Chinese, Traditional Chinese (Hong Kong) or Simplified Chinese, the output of the handwriting recognition is always encoded using Unicode. If, after switching versions, you cannot see the message displayed correctly at the bottom of the dialog box, your Windows operating system may not support the version you chose.
3. Select [Use English Message] to display all of the messages in English.

## Chapter 5 Writing Application

The following will introduce the function of Writing Application, such as Gesture, Mix Traditional and Simplified Writing, and Using EZ Go Jr. in MSN Messenger.

### 5.1 Gesture

EZ Go Jr. supports four standard writing gestures. You can write these gestures to perform certain keyboard actions.

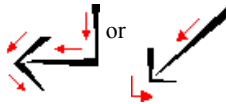
1. Delete : simulate the DELETE key.



2. Backspace : simulate the BACKSPACE key.



3. Enter : simulate the ENTER key.



4. Space : simulate the SPACE key.



### 5.2 Mix Traditional and Simplified Writing

You can mix writing traditional and simplified Chinese characters. For example, you can write the two characters 『書寫』.




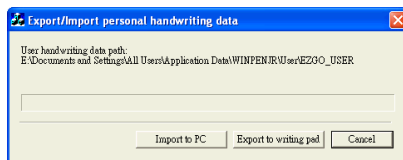
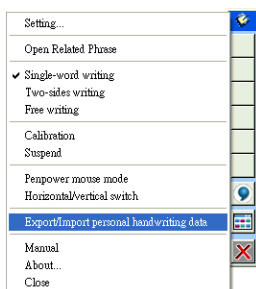
No matter what characters you write, just set the recognition engine to determine whether the output is shown as Traditional or Simplified Chinese. Refer to 4.7.1 Recognition Setting for more details.



## 5.3 Export/Import Personal Handwriting Data

You can use the [Export/Import Personal Handwriting Data] function to export your personal candidate characters, artificial intelligence, learning tool, phrase data to the EZ Go Jr. and other PCs.

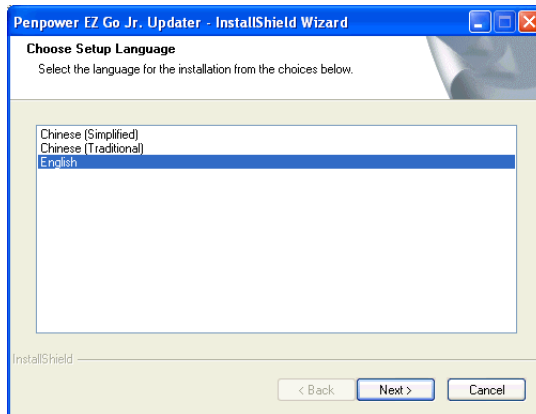
1. Mouse click the  [Menu] button from the [New Pen mode] toolbar, and select [Export/Import Personal Handwriting Data] function.
2. Select [Export to writing pad] to export your personal data into the EZ Go Jr.
3. Plug the EZ Go Jr. to another PC. And similarly open the [Export/Import Personal Handwriting Data] dialog box.
4. Select [Import to PC] to import your personal data into the PC.



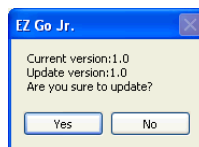
## 5.4 Software Upgrade

Penpower products provide free of charge software upgrade service. You may visit our website <http://www.penpower.net>, select the local website and then go to the software download page to download the latest version.

1. Plug EZ Go Jr. to the USB port of your computer.
2. Double click the the latest version of the EZ Go Jr. file. (.exe file)
3. Select the installation language and click [Next].



4. Please check the EZ Go Jr. software version and the installation software version. Click [Yes] to begin upgrade process.



5. When the upgrade process is finished, click [OK] and unplug the EZ Go Jr. handwriting pad.



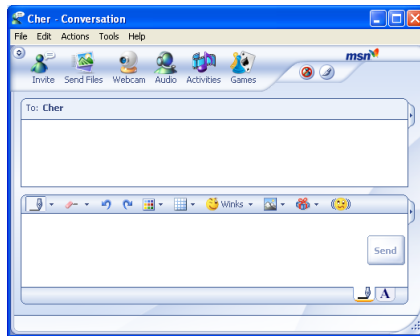


## 5.5 Using EZ Go Jr. in MSN Messenger

**Note:** This required MSN Messenger version 6.1 or higher version.

After you have signed in to the MSN Messenger, double-click the person's name to display the conversation box. Below this conversation box, there are two modes for you to select: [Handwrite] and [Type] . You can switch between the input modes as you like.

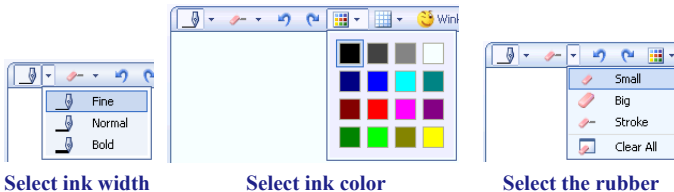
**Note:** If you can't activate the New Pen mode, please visit the Microsoft website and install the necessary handwriting.



In the [Handwrite mode], you can adjust the font size and the font color. When done, you can write on the tablet and the words will appear in your selected font size and color.

If you want to clear the words you have written, you can use the eraser shown in the scroll bar.

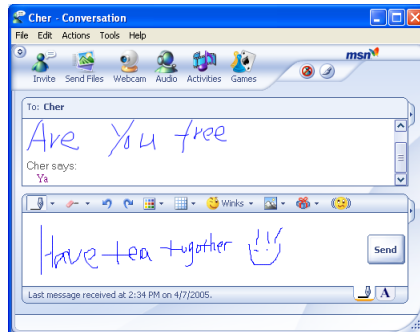
After you have input your message, click [Send] to send your handwritten message.



Select ink width

Select ink color

Select the rubber







# **Penpower EZ Go Jr. V1.0 User Manual**

Penpower Technology LTD.

Release: November, 2009