

EN

MacroKey Manager User Manual



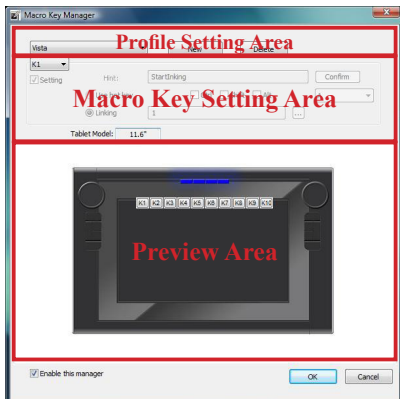
Introduction

MacroKey Manager is a kind of special tablet application software. Through MacroKey Manager, you can set up the keyboard events (Copy= “Ctrl+C”) or hyperlinks which you use mostly. And then, save it as your favorite macro key profile.

We have two default profiles. The setting of default profiles are fixed and can not be modified and deleted. Only non-default macro profile can be defined and modified. If these default profiles can not meet your requirements, you can create new profiles by yourself.

MacroKey Manager Control Panel



Introduction




- **Profile Setting Area**
You can select, create or modify macro key profiles
- **Macro Key Setting Area**
You can set the function of an individual Macro Key here. There are two kinds of setting. One is keyboard event setting and the other is hyperlink setting. Also, you have to name the hint as you like to finish setting process.
- **Preview Area**
You can see the tablet image and the macro keys of your tablet. By hovering to the macro key, the macro key hint will pop up next to the key.

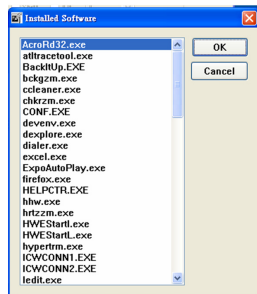
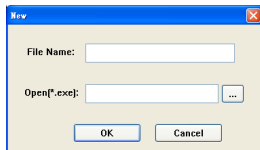
Installation

Once you install “MacroKey Manager” and plug the tablet

to your PC, the icon “” will be showed in System Tray. However, you can choose to disable the MacroKey Manager by click the right button. Once you disable MacroKey Manager or un-plug your tablet from PC, the original icon will be changed into icon “”

— How to Set up a New Profile

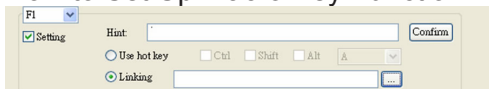
1. Click “New” and name the profile.
2. If a profile is set for particular software, click the browser icon . If not, please skip this process and click “OK” to finish setting a new profile.
3. All installed software is showed. Click the right software. Click “OK”
4. Click “OK” to finish this setting.



— How to Delete a Profile

1. select the profile you want to delete
2. click “Delete”

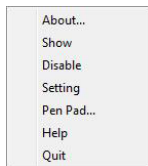
— How to Set Up Macro Key Function



- a. click “Setting” to enable the setting function
- b. key-in the name you want to be as the macro key function hint (necessary)
- c. define the function as hot key or hyperlink
- d. click “Confirm”

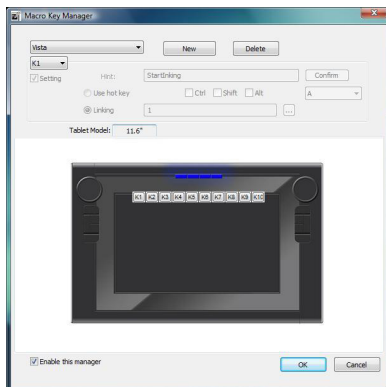
MacroKey Manager Pop-up Menu

Right click on to the macrokey manager icon in the system tray, and then click the right button.

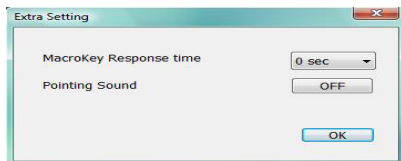


— Show

Displays the Macro Key Manager User Interface.



— Setting



MacroKey Timer

You can set timer for how long macro key function will work. There are four different choices-- 0, 0.5, 1, 2 and 3 seconds can be your alternatives which mean that only when you use a pen to tap the macro key area for 0, 0.5, 1, 2 or 3 seconds, the macro key works.

Pointing Sound:

You can choose to get the sound effect or not while the pen tip is tapping on the tablet.

— Pen Pad

Displays the tablet properties dialog box. Most of the pen pad function can be customized here.

Start Use

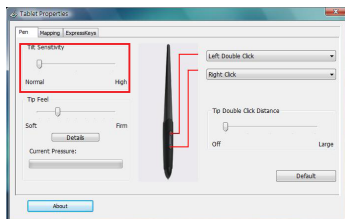
After setting profiles process, you can start to use macro key manager now.

Please select the profile you want to use and click “OK” and then this selected profile will be the active profile always.

CONTROL PANEL SETTINGS

Customizing the Pen

In the Pen tab, you can adjust most of the pen tip and click tasks as desired.



— Adjusting tilt sensitivity

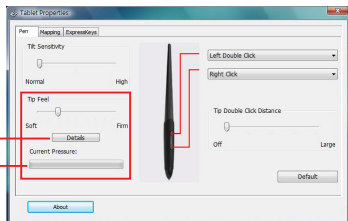
To adjust the tilt sensitivity, drag the slider to heighten (High) or lower (Normal) the Tilt Sensitivity. To get the most appropriate setting, be sure to test the new setting in an application that supports tilt angle inputs.

This tilt sensitivity function is also direction-sensitive, and is able to control the brush orientation in some applications.

— Adjusting tip feel

Click to learn more about the tip feel settings

Click the pen tip on the tablet to test the current tip feel



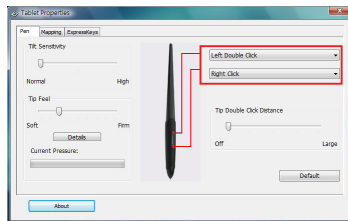
To adjust the tip feel, drag the slider to adjust the amount of pressure needed for the pen tip to click or draw.

A firm tip feel may prevent accidental inputs and have better control on the thin line drawing while a soft tip feel comparatively results in a light touch to take effect on strokes.

Detail: Displays the advanced tip feel setting dialog box.

Current pressure: Press and hold the pen tip on the tablet to test the current tip feel setting.

— Button Functions:



To customize the button functions, click on the pull-down menus to select a proper setting for each button.

Disabled:

No function is performed when the option is selected.

Click:

Simulates the typical mouse left-button click. Be sure to assign a button for this function so you can always click.

Double-click:

Simulates the typical mouse left-button double-click.

Right-click:

Simulates the typical mouse right-button click.

Double right-click:

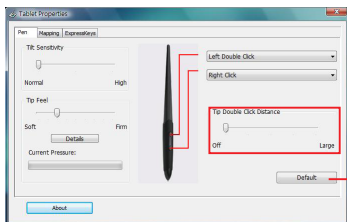
Scroll:

Simulates the 4-way (up/down/left/right) scroll to navigate the screen.

Mode Toggle:

Toggles between PEN mode and MOUSE mode.

— Tip Double Click Distance



Returns the Pen tab settings to the factory default settings

You may determine how far will be the acceptable distance that the cursor can move between 2 clicks and still is regarded as a double-click.

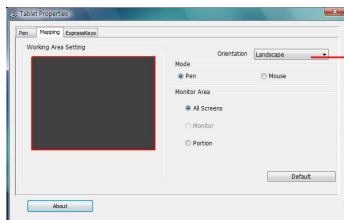
Drag the slider to increase (Large) or decrease (Off) the double-click distance. The wider the distance, the easier the double-click can make.

Tablet to Screen Mapping

The work area controls the relationship between the tablet surface and the active area of your monitor.

— Pen Mode

In Pen mode, the mapping tab is as follows:



Select the orientation of your tablet according to your need

0°: Landscape

90°: Portrait

180°: Landscape flipped

270°: Portrait flipped

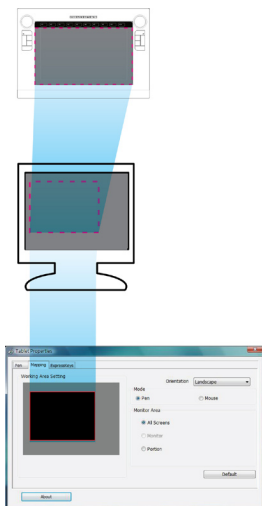
Orientation

You can choose a different tablet orientation and rotate your tablet to match the selection.

The orientation you select applies to all tools and actuated applications.

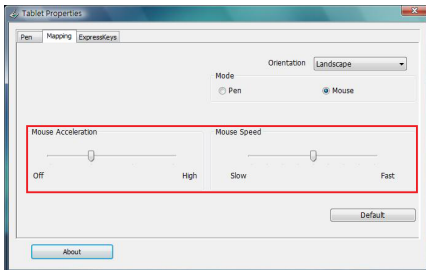
Choose either to use the entire or portion of the screen/
tablet. Do one of the follows:

- a. Screen: Select a monitor screen area for tablet to screen mapping.



— Mouse Mode

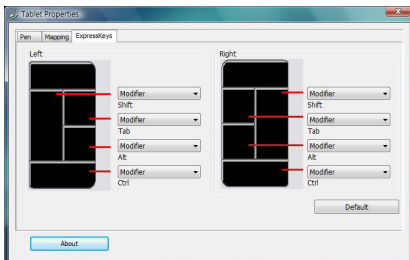
In Mouse mode, the mapping tab is as follows:



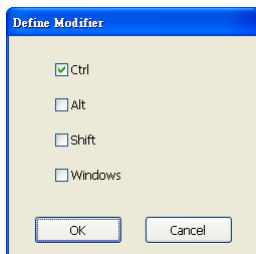
You may drag the sliders to adjust the mouse acceleration and mouse track speed.

Customizing Express Keys

The Express Keys on the tablet can be customized. To change the default key settings , do the following:



1. select a menu corresponding to the key you want to change its function



2. choose a function you want to assign to the key
3. click OK