

PenPower WorldPenScan

User Manual

Release: October, 2016
Version: v4.3 Win

PenPower Technology Ltd.

Software User License Agreement

You are licensed to legally use this software program ("the Software") by PenPower Technology Ltd ("PenPower") under this license agreement ("The Agreement"). If you do not agree with any of the provisions in this Agreement, please do not install, copy or use the Software. By using the Software, you are deemed to fully understand and accept the provisions of this Agreement.

1. Intellectual Property

All intellectual property rights in the Software, together with all information and documents included in the packaging for the Software (including but not limited to copy-rights), are property of PenPower or have been licensed to PenPower, and are protected by relevant laws and regulations.

2. License to Use

You are authorized to use the Software on one (1) single computer only. You may not use the Software on any other machines other than the said single computer.

3. Authority to Copy

The Software and all documents included with the Software, and copyright thereof, are property of PenPower. You are licensed to make one (1) copy of the Software for your personal backup purposes. All other acts of copying are strictly prohibited. The backup copy shall not be installed nor used while the Software is being used.

You may not sell, lease, disassemble, reverse engineer, copy, translate, adapt or derive the Software, or obtain the source code of the Software by any other means. You may not use the Software for any purposes other than those permitted under this Agreement.

4. Business Users

If you need to install or use the Software on more than one (1) computer, please contact PenPower or our local distributor to purchase a license for the additional use.

5. Privacy Policy

This privacy policy explains what information PenPower may collect about you, how PenPower and other companies may use it, and tracking technologies that may be used to collect information. When you use our sites or our mobile applications (our "apps"), PenPower collect information about you and use it to facilitate and improve our services. PenPower may change this Privacy Policy at any time by posting a revised Privacy Policy on this page or apps download screen and such changes will be effective upon posting.

Information PenPower collect

- a. Information collected automatically: When you visit our sites and use our apps, PenPower automatically collect and store information about your computer or mobile device and your activities. This information may include:

Your computer's or mobile device's IP address

Technical information about your computer or mobile device (such as type of device, web browser or operating system)

Your preferences and settings (time zone, language, etc.)

Your computer's or mobile device's unique ID number

Your mobile device's geographic location (specific geographic location if you've enabled collection of that information, or general geographic location automatically)

How long you visited our sites or used our apps and which services and features you used

- b. Information you choose to provide: You may choose to open an account and provide us with information in order to use certain services or to take advantage of special offers. This information may include your name, serial number and related information of the services, email address, phone number. You may choose not to provide us with any personally identifiable information. But if you don't provide certain information, you won't be able to use some of the services PenPower offer.

How PenPower use your information

We use your information to provide and improve our services, customize services for you, make special offers, better understand our users, diagnose and fix problems, and sell and display ads that may be relevant to you.

Email Address: PenPower use your email address only to allow you to log in to your account, send you confirmations (of your registration, purchase, etc.), and to send you messages as part of our services. PenPower will also use your email address to respond to your customer service inquiries.

Phone Number: PenPower use your mobile phone number only to send you SMS messages that you've requested.

Advertisers : Advertisers and advertising networks use tracking technologies to collect information about users' computers or mobile devices and their online activities (for example, web pages visited and searches made) as well as general geographic location and use that information to display targeted ads to users. PenPower sometimes allow these ad companies to collect such information when you use our sites and apps to enable them to display targeted ads to you.

Legal Matters: PenPower may use or disclose user information: in response to a legal request, such as a subpoena, court order, or government demand; to comply with the law; in connection with a threat of litigation; to investigate or report illegal activity; to protect the legal rights of PenPower, our customers, our sites and apps or users of our sites and apps; or to enforce our rights or defend claims. PenPower may also transfer your information to another company in connection with a corporate restructuring, such as a sale or merger.

Mobile Device IDs: If you're using an app, PenPower use mobile device IDs (the unique identifier assigned to a device by the manufacturer), instead of cookies, to recognize you.

Apps

If you install one of our apps on your mobile device, your use of the app is subject to our app license agreement.

6. Liability

You agree to indemnify PenPower against all losses, costs, debts, settlement payments or other expenses (including but not limited to attorneys fees) arising from your breach of this Agreement, and you agree to compensate PenPower for all of the abovementioned damages.

7. Third Party Offerings

The Software may allow you to access the contents, software applications and data services of a third party, including but not limited to a variety of Internet applications ("Third Party Offerings") and interoperate with them. Your access to and use of any Third Party Offering is governed by the agreed terms and conditions in connection with the offering and the copyright laws of the country the third party belongs to.

Third Party Offerings are not owned or provided by the PenPower. Third Party Offerings may at any time for any reason be modified or discontinued. PenPower does not control, endorse, or accept any responsibility associated with Third Party Offerings. Any agreement between you and any third party in connection with a Third Party Offering, including privacy policies and use of your personal information, delivery of and payment for goods and services, and any other terms, conditions, warranties, or representations of the third party associated with such agreement is solely a dealing between you and the third party. You should take into consideration and shall assume all risks or responsibilities in connection with the use of "Third Party Offerings."

8. No Warranty

Effectiveness of a packaged software in handling information is closely related to its software and hardware environment. The Software is published following careful development and product testing by PenPower, but PenPower is not able to conduct tests based on all possible combinations of software and hardware environment. Therefore, PenPower is unable to promise nor warrant that there will be absolutely no risk of loss or damage of information, or any other kind of loss, during installation and/or execution of the Software. You must be fully aware of your risks in using the Software.

PenPower will provide you with the Software and support services in respect of the Software to the maximum extent permitted by law. However, PenPower does not warrant that the Software and information included in the package of the Software contain no defects or errors. PenPower is not liable for any indirect, special or incidental loss arising from the Software, including but not limited to loss of profits, damage to business reputation, cessation of work, hardware malfunction or damage, or any other commercial damage or loss arising from commercial use of the Software.

9. Limitation of Liability and Damages

Except as expressly specified and expressly agreed to in writing by PenPower, PenPower shall not be responsible for any damage incurred by you for any reason under this Agreement. The maximum amount of compensation payable by PenPower, in respect of any damage incurred by you for any reason under this Agreement, is limited to the amount you have already paid to PenPower in respect of the Software.

Under no circumstances will PenPower be held liable for the possibility of loss, notwithstanding PenPower may be aware of the possibility of such loss.

10. Prohibition Against Sublicense

You are prohibited to assign the license in respect of the Software granted to you under this Agreement, or to grant a sublicense to another person.

11.Jurisdiction

With regards to any disputes arising from this Agreement, PenPower and you agree that the court having jurisdiction over the business location of PenPower will be the court in the first instance.

12.Miscellaneous

In the event that any provision of this Agreement is found to be invalid at law, such invalidity will not affect the validity of any other provisions, or the legal enforceability of such other provisions.

低功率電波輻射性電機管理辦法

第十二條 經型式認證合格之低功率射頻電機，非經許可，公司、商號或使用者均不得擅自變更頻率、加大功率或變更原設計之特性及功能。

第十四條 低功率射頻電機之使用不得影響飛航安全及干擾合法通信；經發現有干擾現象時，應立即停用，並改善至無干擾時方得繼續使用。前項合法通信，指依電信法規定作業之無線電通信。低功率射頻電機須忍受合法通信或工業、科學及醫療用電波輻射性電機設備之干擾。

FCC Statement

This equipment has been tested and found to comply with the limits for a Class B digital device, pursuant to Part 15 of the FCC Rules. These limits are designed to provide reasonable protection against harmful interference in a residential installation.

This equipment generates, uses and can radiate radio frequency energy and, if not installed and used in accordance with the instructions, may cause harmful interference to radio communications.

However, there is no guarantee that interference will not occur in a particular installation. If this equipment does cause harmful interference to radio or television reception, which can be determined by turning the equipment off and on, the user is encouraged to try to correct the interference by one of the following measures:

- Reorient or relocate the receiving antenna.
- Increase the separation between the equipment and receiver.
- Connect the equipment into an outlet on a circuit different from that to which the receiver is connected.
- Consult the dealer or an experienced radio/TV technician for help.

FCC Caution:

Any changes or modifications not expressly approved by the party responsible for compliance could void the user's authority to operate this equipment.

This device complies with Part 15 of the FCC Rules. Operation is subject to the following two conditions:

- (1) This device may not cause harmful interference, and
- (2) this device must accept any interference received, including interference that may cause undesired operation.

CE Warning

Hereby, PenPower, declares that this WorldPenScan X is in compliance with the essential requirements and other relevant provisions of Directive 1999/5/EC.

< IC RSS-GEN 7.1.5>Industry Canada Caution

This device complies with Industry Canada licence-exempt RSS standard(s).

Operation is subject to the following two conditions:

- (1) this device may not cause interference, and
- (2) this device must accept any interference, including interference that may cause undesired operation of the device.

Le present appareil est conforme aux CNR d'IndustrieCanadaapplicables aux appareils radio exempts de licence. L'exploitation est autorisee aux deux conditions suivantes :

- (1) l'appareil ne doit pas produire de brouillage, et
- (2) l'utilisateur de l'appareil doit accepter tout brouillage radioelectrique subi, meme si le brouillage est susceptible d'en compromettre le fonctionnement.

Contents

| | |
|---|------------|
| Chapter 1 Product Introduction | 1-1 |
| Chapter 2 Getting Started..... | 2-1 |
| 2.1 System Requirements | 2-1 |
| 2.2 Hardware Specification | 2-1 |
| 2.2.1 WorldPanScan USB | 2-1 |
| 2.2.2 WorldPanScan X | 2-2 |
| 2.3 LED Indication Descriptions..... | 2-3 |
| 2.4 Software Installation..... | 2-4 |
| 2.5 Connect WorldPenScan | 2-6 |
| 2.6 Running PenPower WorldPenScan | 2-6 |
| 2.7 The Way to Clean WorldPenScan..... | 2-8 |
| Chapter 3 Scanning and Settings..... | 3-1 |
| 3.1 PenPower WorldPenScan Toolbar..... | 3-1 |
| 3.2 Scan Text and Image | 3-2 |
| 3.2.1 Text Mode | 3-2 |
| 3.2.2 Image Mode | 3-3 |
| 3.3 Online Translation | 3-3 |
| 3.3.1 Dictionary | 3-4 |
| 3.3.2 Sentence Translation | 3-5 |
| 3.4 Business Mode | 3-6 |
| 3.5 Original Image..... | 3-7 |
| 3.6 Settings | 3-7 |
| 3.6.1 General Settings..... | 3-7 |
| 3.6.2 Recognition Settings..... | 3-9 |
| 3.6.3 Business Mode | 3-11 |
| 3.6.4 StarDict Dictionary | 3-12 |
| 3.6.5 Lingoes Dictionary | 3-13 |
| 3.6.6 Hardware Information..... | 3-14 |
| 3.6.7 Auto Update | 3-14 |
| 3.7 Help | 3-15 |
| 3.8 About | 3-15 |

There may be newer versions of the software that was released during or after this product's manufacturing date. If the content in the User Manual differs from the on-screen interface, please follow the instructions on the on-screen interface instead of the User Manual.

Chapter 1 Product Introduction

PenPower WorldPenScan, the best input device, scans and recognizes lots of languages and put the scanned material into your computer via the USB interface. Whenever you come across any particular words or sentences that you do not understand, PenPower WorldPenScan will scan for you.

With an ergonomic design, PenPower WorldPenScan provides a comfortable handle which fits all left and right-handed users. Scan away effortlessly with the transparent scan tip. Where you see, where you scan.

- **Recognition in lots of languages**

PenPower WorldPenScan can scan and recognize lots of languages, including English, French, German, Italian, Spanish, European, and East Asia characters.

- **Bluetooth wireless connection**

WorldPenScan X adopts the Bluetooth 4.0 - BLE technology to facilitate the data transmission to any mobile devices. The scanned result can be immediately digitized into texts and transmitted to Win/Mac PCs via USB port.

- **Business Mode**

The WorldPenScan has business mode, which can recognize bar codes and bank fonts (OCR-A, OCR-B, and MICR). An ideal product for business.

- **Output to multiple applications**

PenPower WorldPenScan can be used in any editing applications, such as Word, Excel, Outlook...etc. You can get the result instantly.

- **Multiple Language Translation**

By sending the scanned and recognized words or sentences directly to on-line translators, you can instantly see the translation results by one click.

- **Scan image**

PenPower WorldPenScan lets you scan and save the images into your document.

Chapter 2 Getting Started

2.1 System Requirements

- Windows 10 /8 desktop mode/7 /Vista /XP SP3
- 650MB of available hard disk space
- USB port

2.2 Hardware Specification

2.2.1 WorldPanScan USB

- Dimensions: 136 x 34 x 21mm
- Weight: 47g
- Interface: USB 2.0
- Voltage and amperage: 4.75~5.25V (<100mA)
- Scanning speed: 10 cm/sec.
- Character size: 6~22 pt



**Function button:**

While scanning text or images, clicking the function button will function as the **[Enter]** key on the keyboard by default. While using dictionary function, clicking the function button will jump to next word you scanned.

Tip: You can refer Section 3.6.1 to configure the function button as Enter, Tab, and Space.

2.2.2 WorldPanScan X

- Dimensions: 136 x 34 x 21mm
- Weight: 56g
- Interface: USB 2.0/Bluetooth v4.0 BLE
- Built-in lithium polymer rechargeable battery
- Voltage and amperage: 4.75~5.25V (<100mA)
- Scanning speed: 10 cm/sec.
- Character size: 6~22 pt



Function button:

While scanning text or images, clicking the function button will function as the **[Enter]** key on the keyboard by default. While using dictionary function, clicking the function button will jump to next word you scanned.

Tip: You can refer Section 3.6.1 to configure the function button as Enter, Tab, and Space.

Note : Before using for the first time, please charge pen scanner over USB. It takes around 5 hours to be fully charged. You can see the battery status in [Settings] > [Hardware info].

2.3 LED Indication Descriptions

WorldPenScan USB

| Status | Function Light |
|-------------------|-------------------------------------|
| Boot Successfully | Purple turns into Blue (Slow flash) |
| Scanning | Blue (Steady) |
| Scan Failed | Red |
| No Connection | N/A |

WorldPenScan X

| Status | Power Light |
|---------------------|------------------|
| Standby + Charging | Orange (Steady) |
| Standby | Green (Steady) |
| Shutdown | N/A |
| Shutdown + Charging | Red (Steady) |
| Low Battery | Red (Slow flash) |

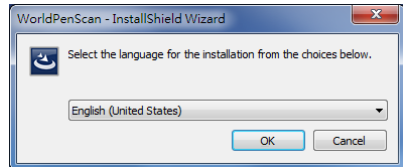
| Status | Function Light |
|-------------------|-------------------|
| Boot Successfully | Purple |
| Connected | Blue (Slow flash) |
| Scanning | Blue (Steady) |
| Scan Failed | Red |
| No Connection | N/A |



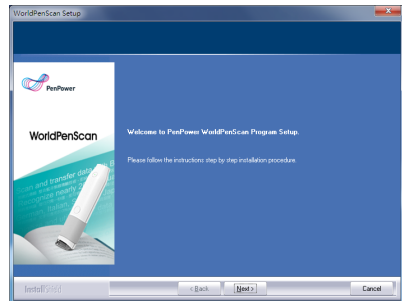
2.4 Software Installation

1. Insert the **WorldPenScan** setup CD into the CD-ROM drive. The installation program will start automatically. Click [**WorldPenScan**] to install.

2. Please select an installation language and click [**Next**] to install.



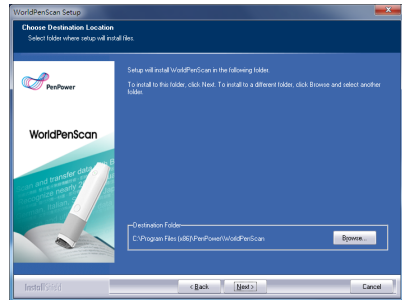
3. Click [**Next**] to install.



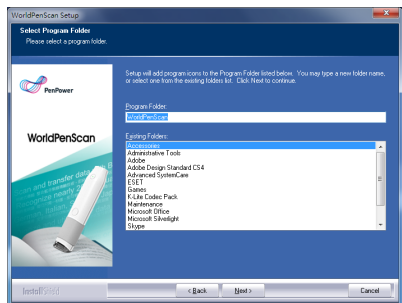
4. Please read the License Agreement, select [**I accept the terms of the license agreement**] and click [**Next**] to continue.



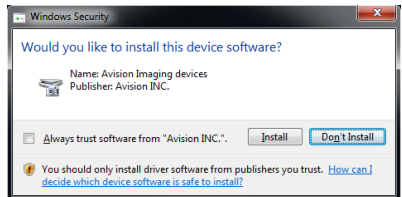
5. Select a destination folder to install the software to. Click **[Next]** to continue.



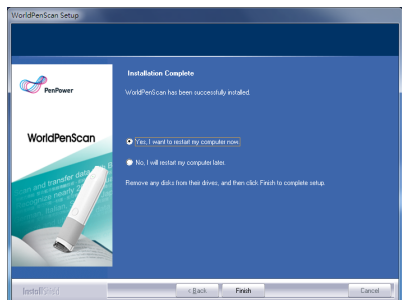
6. Choose the program folder that you want to install to. If left as default, the software will create a new folder for you. Click **[Next]** to continue.



7. During the installation, it will ask you to install driver or not, please click **[Install]** to continue.



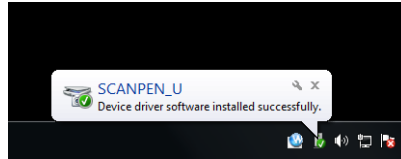
8. When the installation is finished, please restart your computer. Click **[Finish]** to restart your computer.





2.5 Connect WorldPenScan

1. Please use USB cable to connect the WorldPenScan with your computer, Windows will detect the hardware and start to install, if the hardware installation Wizard came out, please select [No, not this time], then click [Next].
2. The system will install the driver automatically, then you will see the notification once it is done.

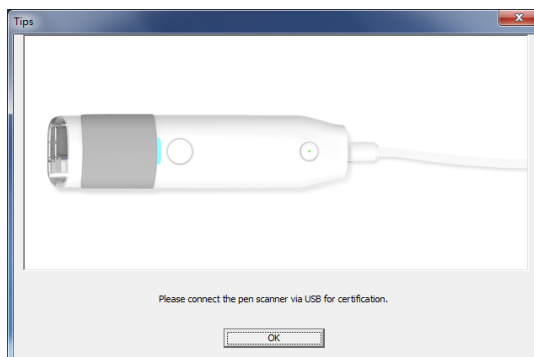


Note: Some computers may shut down accidentally after connection. This is due to the lack of power to support several USB devices. To avoid this problem, connect your WorldPenScan series and other USB devices to an extra-powered USB hub.

2.6 Running PenPower WorldPenScan

Go to [Start/ All Programs/ PenPower WorldPenScan/ WorldPenScan], or double-click the shortcut  on the desktop to start the **WorldPenScan** toolbar.

At this time there will be a hardware connection confirmation window appears, please click [OK].

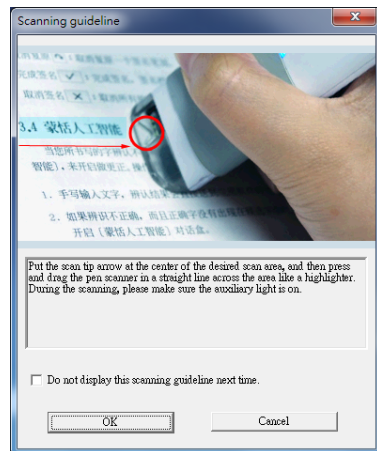


When running the software for the first time, a **Registration Reminder** will appear. Please click on **Register now** to register and receive the warranty service. You can also click **Register later** to close the reminder. When you need to register, click the **Tools** button and select **About** from the toolbar and then click on **Registration**. If you've registered, please click **Already Registered**.



***Tip:** If you do not need to be reminded again, you can check [Don't show this registering window at startup].*

A **Scanning Guide** will appear after the registration reminder, if you would not like to read the message again, you can check [Do not display this scanning guide next time], and click [OK].

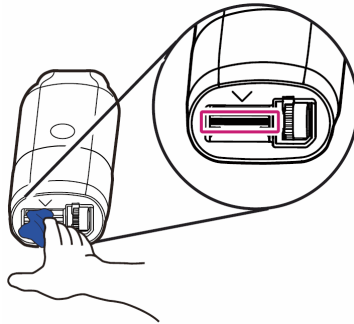




2.7 The Way to Clean WorldPenScan

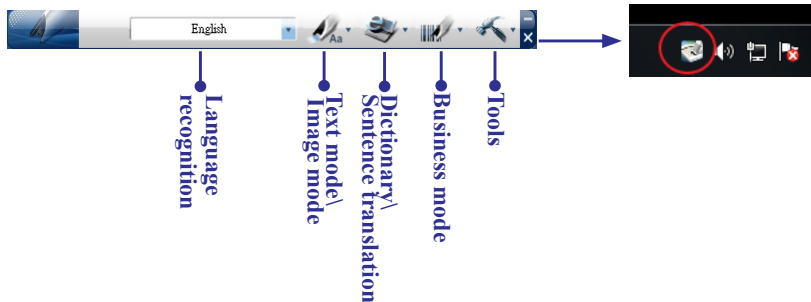
If the scanning head is getting dirty, you can use a clean non-woven glass cloth to gently wipe the surface of the scanning head. (Please refer to the images below)


Never wipe the scanning head with water, because water will flow into inner components and cause function failure. Besides, never use any alcohol and other solvents.







Chapter 3 Scanning and Settings

3.1 PenPower WorldPenScan Toolbar



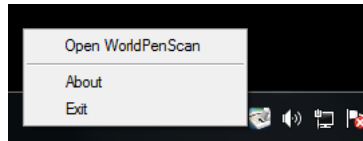
1. **Language Recognition:** PenPower WorldPenScan can recognize Traditional Chinese, Simplified Chinese, English, French, German, Italian, Japanese, Korean, Spanish and more text. Click  to select the language you would like to scan.

Note: The Language Recognition must match the language of the content for optimal accuracy.

2. **Text mode:** The [Text mode]  is the default scan mode for scanning an article or a sentence directly. The scanned word or sentence will be recognized and sent as typed text to your computer. Please refer to 3.2.1 **Text Mode** for more detailed information.
3. **Image mode:** You can select [Image mode] in the drop-down menu from the button  to scan images or text. They will be sent to your computer in image formats. Please refer to 3.2.2 **Image Mode** for more detailed information.
4. **Dictionary:** Selecting [Dictionary] in the drop-down menu from the button  can provide you the translation result of every scanned word. Please refer to 3.3.1 **Online Translation** for more detailed information.
5. **Sentence translation:** Selecting [Sentence translation] in the drop-down menu from the button  will provide the translations of the sentences you scan. Please refer to 3.3.2 **Online Translation** for more detailed information.



6. **Business Mode** : You can select **[Barcode]**, **[MICR]**, or **[OCR A/B]** from **Business Mode**. These modes allow you to scan barcodes, invoices, checks, bills, postal codes, coupon numbers, and racing numbers. In order to have higher recognition accuracy, you may use the **Business mode** to recognize different documents. Please refer to 3.4 **Business Mode** for more detailed information.
7. **Tools** : Provide Original Image, Bubble Window, Settings, Help and About Pen-Power WorldPenScan.
 - . **Original Image**: Display the scanned image. See 3.5 Original Image.
 - . **Settings**: Provide general, recognition, and business mode settings. See 3.7 Settings for more detailed information.
8. **Minimize** : Click to minimize the toolbar.
9. **Minimize to Tray Icon** : Click minimize the toolbar into a tray icon. Double-click the tray icon on the bottom-right of the screen to open the toolbar. Right-click the tray icon to open the function menu.



3.2 Scan Text and Image

3.2.1 Text Mode


When you want to scan an article or a sentence directly into your computer, you can use **[Text mode]** :


1. Select **[Text mode]** in the drop-down menu from the button .
2. Select the language of the text that you want to scan from **[Language recognition]**.
3. Open any word processor, for example Microsoft Word or WordPad, and then click the location where you want to input.
4. Place a document on a flat surface and place the scan tip at the front of your desired scan area. Aim the scan tip arrow at the center of the desired scan area, and then press and drag the pen scanner in a straight line across the area like a highlighter. During the scanning, please make sure the white auxiliary light is on.

5. Stop applying pressure to the pen to stop scanning. The text that the pen has scanned will be displayed in your word processor immediately.

Note: PenPower WorldPenScan is able to scan and recognize one row of characters at a time. Please place the scan tip arrow at the center of the line.

3.2.2 Image Mode

When you want to scan text or images into your computer in image formats, you can use [Image mode] .

1. Select [**Image mode**] in drop-down menu from the button .
2. Open a word processor that is able to input images, for example Microsoft Word. Click the location where you would like to input the scanned images.
3. Place a document on the a flat surface and place the scan tip at the starting word or picture. Aim the scan tip arrow at the center of the scan area, and then press and drag the pen scanner in a straight line like a highlighter. The white auxiliary light from the scan tip indicates the pen is scanning.
4. Stop applying pressure to the scan pen to stop scanning. The scanned picture will be displayed in your word processor in an image format.






3.3 Online Translation

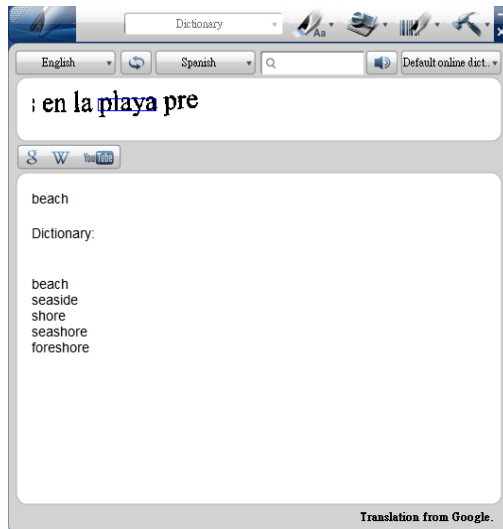
PenPower WorldPenScan provides online translation function to translate scanned words and sentences by [**Dictionary**] and [**Sentence Translation**]. PenPower WorldPenScan collects the translations results from websites and display them in its translation window.



Note: Please connect to the internet while using the online translation function.










3.3.1 Dictionary

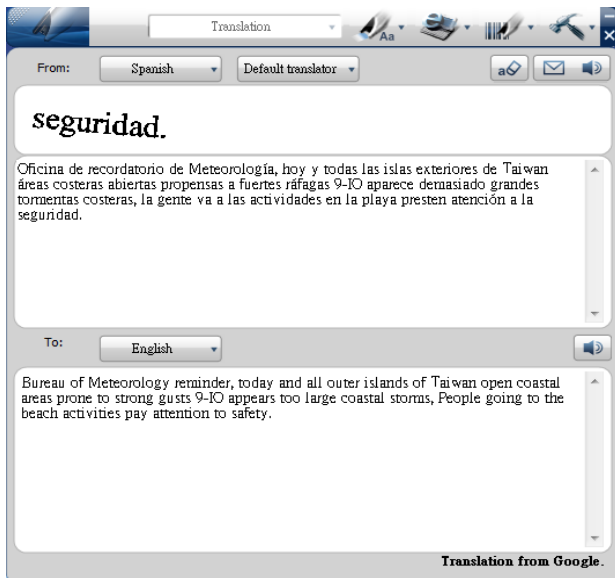
1. Select **[Dictionary]** in the drop-down menu from the button .
2. Select the language you want to translate from and the language you want to translate to. .
3. Select the translate engine you want to use .
4. Aim the scan tip arrow at the center of the desired scan area, and then press and drag the pen scanner in a straight line across the area like a highlighter. During the scanning, please make sure the auxiliary light is on.
5. Stop applying pressure to the scan pen to stop scanning. The word and its translation result will be displayed in the window as below. At the bottom of the window, you can see the source of the translation. If you scan more than one word, you can press the **[Function button]** on the scan pen to see the translation of the next recognizable word.



6. The translated word will also be shown in the search box. You can click  to listen to the pronunciation of this word or click  to search for more information on Google, Wikipedia, or YouTube. You can also type in the search bar to find more information.

3.3.2 Sentence Translation

1. Select **[Sentence translation]** in the drop-down menu from the button .
2. Select the language you want to translate from **From:**  and the language you want to translate to **To:** .
3. Select the translate engine you want to use .
4. Aim the scan tip arrow at the center of the desired scan area, and then press and drag the pen scanner in a straight line across the area like a highlighter. During the scanning, please make sure the white auxiliary light is on. The original image, scanned sentence, and translation result will be displayed automatically in the window as below.
5. You can click  to delete the contents, click  to send the scanned text out by e-mail, and click  to listen to the pronunciation.





3.4 Business Mode

The Business Mode allows you to scan barcodes, invoices, checks, bills, postal codes, coupon numbers and racing numbers etc.

The fonts that the Business Mode supports are OCR A, OCR B, MICR, and other fonts as the samples below:

OCR A: 0 1 2 3 A B C a b c


OCR B: 0 1 2 3 A B C a b c

MS Gothic: 0 1 2 3 A B C a b c

MICR : 1 2 3 4 5 6 7 8 9 0

The barcodes that the Business Mode supports are Codabar, Code 128, Code 39, Code 93, EAN 8, EAN 13, IATA 2 of 5, Industrial 2 of 5, Interleaved 2 of 5, Matrix 2 of 5, Patch, PostNet, UCC-128, UPC-A and UPC-E.

In order to have higher recognition accuracy, you may use the **[Business Mode]** to recognize these fonts:


1. Select **[Barcode]**, **[MICR]**, or **[OCR A/B]** in the drop-down menu from the button .

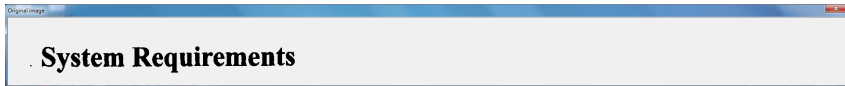
***Note:** Before you start the Business Mode, please select the font that you want to scan in [Tools] \ [Settings] \ [Business Mode]. Please refer to 3.6.3 for more information.*

2. Open the application you want to use or any text editor, for example Microsoft Word. Put the cursor to the location where you would like to input the scanned text or numbers.
3. Place a document on a flat surface and place the scan tip at the front of your desired scan area. Aim the scan tip arrow at the center of the desired scan area, and then press and drag the pen scanner in a straight line across the area like a highlighter. During the scanning, please make sure the white auxiliary light is on.
4. Stop applying pressure to the pen to stop scanning. The scanned text or numbers are displayed in your application or word processor immediately.

***Note 1:** When scanning barcodes, please aim pen scanner at the upper side of barcodes, not at the center, to have higher recognition accuracy.*


3.5 Original Image

Click [Tools]  button and select the [Original Image] option from the drop-down menu to open the [Original Image] window. After scanning, the [Original Image] window displays the scanned image. You can check the scanned image to compare with the original text. This can help you improving your scan technique for more accurate recognition results.



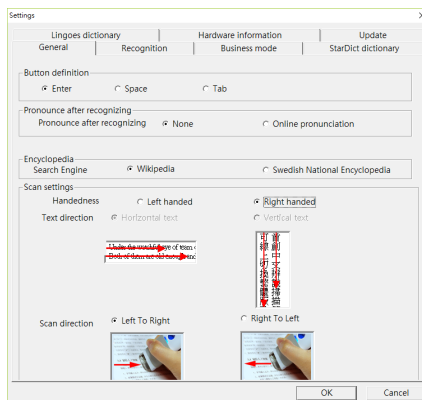
Tip: You can right click on the original image to save the image to .bmp or .pcx file.

3.6 Settings

Click [Tools]  button and select [Settings] from the drop-down menu to set up the general, recognition, online translation and interface language settings.

3.6.1 General Settings

Click [Tools]  button and select [Settings] from the drop-down menu to set the preferences.



Button Definition

The default function of Function Button is Enter. You can replace Enter by Space and Tab. Select the options under Button definition and then you can select which function you want the Function Button to be.

Pronunciation

When choosing the Traditional Chinese or Simplified Chinese as the language recognition, you can choose to listen the speech of the recognized word in Mandarin or Cantonese.

When choosing the English as the language recognition, you can choose to listen the speech of the recognized English word.

When the recognition language is not Chinese or English, you can only use [Online Pronunciation].

Scan Direction

PenPower WorldPenScan must be used to scan the characters in consistent direction, any changes to the direction will cause inaccurate recognition results.

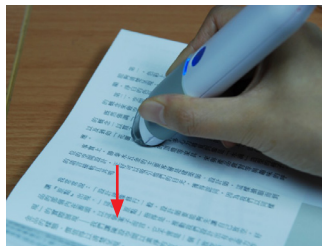
When choosing Traditional Chinese, Simplified Chinese, Japanese or Korean as the language recognition, you can accord to the document you want to scan and your preferred way of holding pen to choose the scan direction manually.

Scanning Horizontal Text

When scanning horizontal text, you can choose the **[Horizontal]** option. Hold the Pen firmly, as you would hold a highlighter, while the Pen's tip is at an angle of between 70 and 80 degrees to the page. Align the Scan Tip arrow on your pen to the center of the characters. Then move the pen up-to-down.



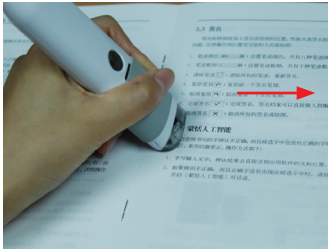
Left Hand



Right Hand

Scanning Vertically Aligned Text

When scanning vertically aligned text, you can choose **[Vertically]** and then select **[Left-hand]** or **[Right-hand]**. To scan the text, please hold the pen firmly as you hold a highlighter, with the pen tip at an angle between 70 to 80 degrees to the page. Align the Scan Tip arrow on your pen to the center of the characters.



Left hand: Scan from left-to-right

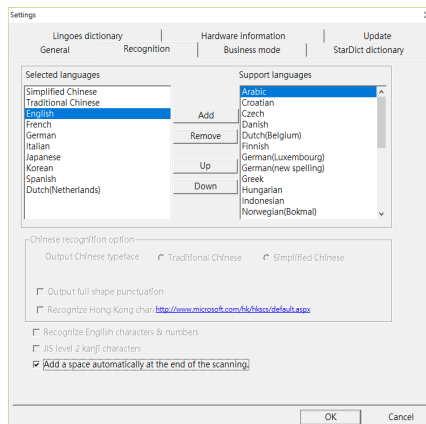


Right hand: Scan from left-to-right

***Note:** PenPower WorldPenScan is able to scan and recognize one row of characters at a time. Please place the pen scanner in such a manner so that the Scan Tip arrow is at the center of the line of text.*

3.6.2 Recognition Settings

In the **[Recognition]** page, you can set up the recognition languages, Chinese recognition option, recognition contents and at the end of scan, insert a space automatically.





Recognition Languages

PenPower WorldPenScan provides lots of recognition languages for you to choose. In the toolbar, you can drag down the recognition menu to select the recognition language you want.

You can modify the recognition language menu in the Recognition Language tab of Setting. In the Recognition Language Tab, the right column contains lots of recognition languages for you to choose. The languages appear in the left column will all appear on the recognition language drag down menu on the tool bar. In this tab, you can select the recognition language in the right column and click [add] to add it into the left column. If you want to remove a language from the left column, you can select the language you want to remove and click [Remove] to remove it from the left column.

Tip: Select a language in the right column and click  or , you can change this language's order.

Chinese Recognition Option

When choosing Chinese Traditional or Chinese Simplified as the language recognition, you can choose to output the recognized characters in Traditional Chinese or Simplified Chinese. Check the **[Output full-width punctuations]** option to set the punctuations as full-width. When choosing the Chinese Traditional as the language recognition, you can check the **[Recognize HK Character]** to recognize Hongkong characters. If you do not need to recognize Hongkong characters, please do not check it for higher recognition accuracy. You can connect to the <http://www.microsoft.com/hk/hkscs/default.aspx> to check the Hong Kong characters list.

Recognize English characters & numbers

You can select **[Recognize English characters & numbers]** to make PenPower WorldPenScan recognize English characters and numbers when choosing Traditional Chinese, Simplified Chinese, Japanese or Korean as the language recognition,

JIS Level 2 Kanji Characters

When choosing the Japanese as the language recognition, you can check the **[JIS Level 2 Kanji Characters]** to recognize the JIS level 2 Kanji characters. If you do not need to recognize JIS level 2 Kanji characters, please do not check it for higher recognition accuracy.

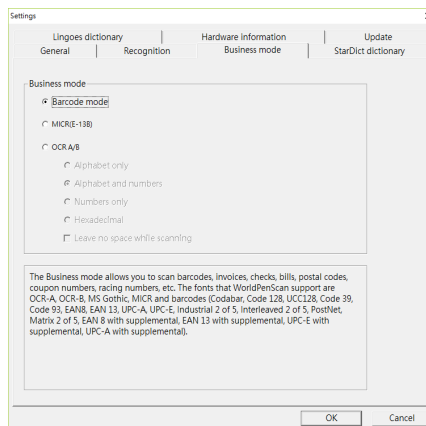
At the End of the Scan, Insert a Space Automatically

When choosing the English, French, German, Italian or Spanish as the language recognition, you can check the **[At the end of the scan, insert a space automatically]**. While scanning text, the system will automatically add a space at the end of the scan.

3.6.3 Business Mode

When using the business mode, you can accord with the scan content to choose the scan mode as below for higher recognition accuracy and the supported font will show in the window.

- Barcode: Recognize barcodes.
- MICR (E-13B): Recognize MICR font Text.
- OCR A/B: Recognize OCR A/B font Text. (The options below are only for OCR A/B)
 - Alphabet only: Recognize from A to Z and from a to z.
 - Numbers only: Recognize from 0 to 9.
 - Alphabet & Numbers: Recognize from A to Z, from a to z and from 0 to 9.
 - Hexadecimal: Recognize from A to F, from a to f and from 0 to 9.
 - Leave no space while scanning: Without leaving any space while scanning.

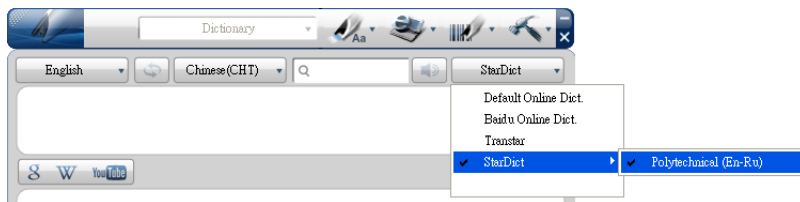
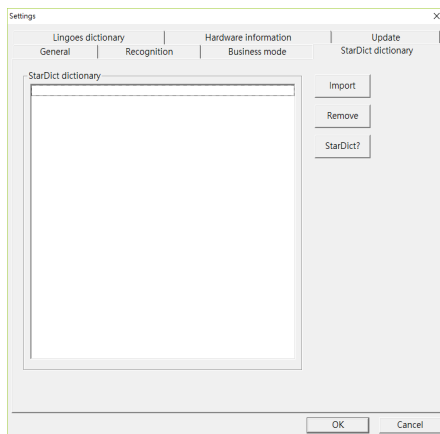




3.6.4 StarDict Dictionary

WorldPenScan allows you to import StarDict dictionary files (*.bz2), if you have the dictionary file, please follow the steps below to import, you can find the shared StarDict files on internet, and click the link to download then save the dictionary file into your computer, and click [Import] here to import StarDict dictionary files, and also delete the dictionaries you don't want to use in here.

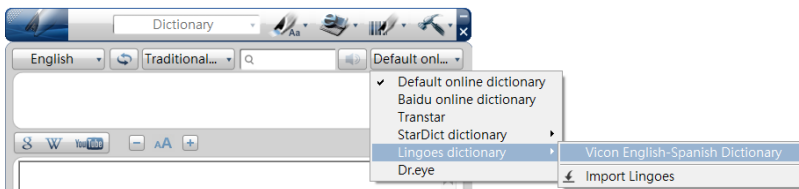
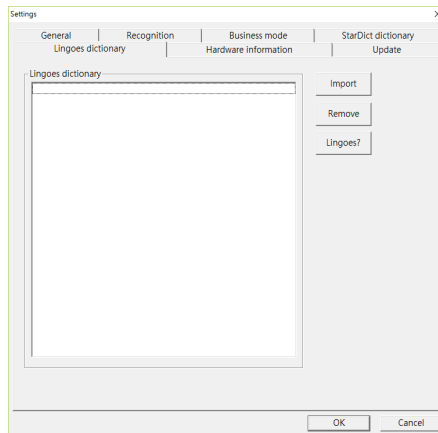
After importing, you can start to use StarDict dictionary under [Dictionary Mode], please remember to choose the recognize language which that dictionary file supports, for example you import a English - Chinese dictionary, you have to choose English as recognize language.



3.6.5 LingoEs Dictionary

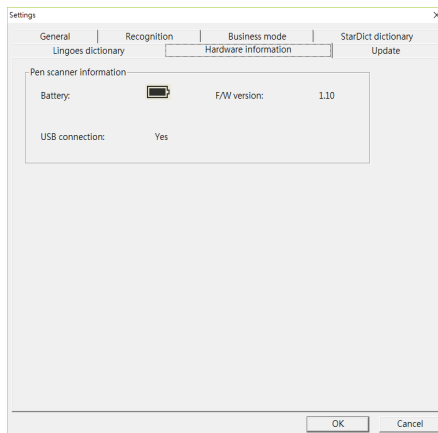
WorldPenScan allows you to import LingoEs dictionary files (*.ld2), if you have the dictionary file, please follow the steps below to import, you can find the shared stardict files on internet, and click the link to download then save the dictionary file into your computer, and click [Import] here to import LingoEs dictionary files, and also delete the dictionaries you don't want to use in here.

After importing, you can start to use LingoEs dictionary under [Dictionary Mode], please remember to choose the recognize language which that dictionary file supports, for example you import a English - Chinese dictionary, you have to choose English as recognize language.



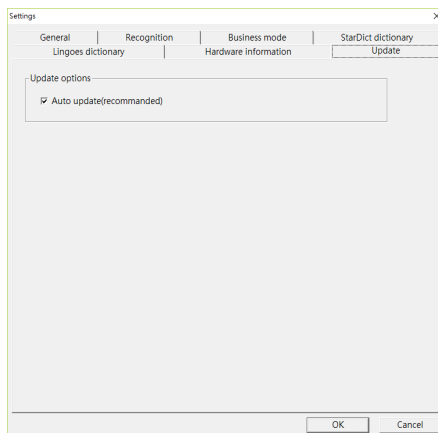
3.6.6 Hardware Information

In [Hardware info] page, you can view the pen status which includes WorldPenScan X battery status, F/W version and USB connection status.




3.6.7 Auto Update


WorldPenScan software has auto update feature, you can uncheck it if you don't want to be notified once there is a new version released.



3.7 Help

Selecting [**Help**] in the drop-down menu from the button  can find the user manual of PenPower WorldPenScan.

3.8 About

Selecting [**About**] in the drop-down menu from the button  can see the information of PenPower WorldPenScan, or you can go to PenPower Technology Ltd. official website for more information. If there is any problem or suggestion, please click [**Contact us**] and send an e-mail to us.

** For more information, please use your smart phone/tablet to scan the QR code on the next page to watch the video.*



PenPower WorldPenScan User Manual

Release: October, 2016

Version: v4.3