

# **Penpower mini ScanEYE II**

## **User Manual**

Version: V2.2.1

Edition: Released in May, 2008

# **Penpower Technology Ltd.**

## **Software User License Agreement**

You are licensed to legally use this software program (“the Software”) by Penpower Technology Ltd (“Penpower”) under this license agreement (“The Agreement”). If you do not agree with any of the provisions in this Agreement, please do not install, copy or use the Software. By using the Software, you are deemed to fully understand and accept the provisions of this Agreement.

### **1. Intellectual Property**

All intellectual property rights in the Software, together with all information and documents included in the packaging for the Software (including but not limited to copyrights), are property of Penpower, and are protected by relevant laws and regulations.

### **2. License to Use**

You are authorized to use the Software on one (1) single computer only. You may not use the Software on any other machines other than the said single computer.

### **3. Authority to Copy**

The Software and all documents included with the Software, and copyright thereof, are property of Penpower. You are licensed to make one (1) copy of the Software for your personal backup purposes. All other acts of copying are strictly prohibited.

You may not sell, lease, disassemble, reverse engineer, copy, translate, adapt or derive the Software, or obtain the source code of the Software by any other means. You may not use the Software for any purposes other than those permitted under this Agreement.

### **4. Business Users**

If you need to install or use the Software on more than one (1) computer, please contact Penpower or our local distributor to purchase a license for the additional use.

### **5. Liability**

You agree to indemnify Penpower against all losses, costs, debts, settlement payments or other expenses (including but not limited to attorneys fees) arising from your breach of this Agreement, and you agree to compensate Penpower for all of the abovementioned damages.

### **6. No Warranty**

Effectiveness of a packaged software in handling information is closely related to its software and hardware environment. The Software is published following careful development and product testing by Penpower, but Penpower is not able to conduct tests based on all possible combinations of software and hardware environment. Therefore, Penpower is unable to promise nor warrant that there will be absolutely no risk of loss or damage of information, or any other kind of loss, during installation and/or execution of the Software. You must be fully aware of your risks in using the Software.

Penpower will provide you with the Software and support services in respect of the Software to the maximum extent permitted by law. However, Penpower does not warrant that the Software and information included in the package of the Software contain no defects or errors. Penpower is not liable for any indirect, special or incidental loss arising from the Software, including but not limited to loss of profits, damage to business reputation, cessation of work, hardware malfunction or damage, or any other commercial damage or loss arising from commercial use of the Software.

#### **7. Limitation of Liability and Damages**

The maximum amount of compensation payable by Penpower, in respect of any damage incurred by you for any reason under this Agreement, is limited to the amount you have already paid to Penpower in respect of the Software.

Under no circumstances will Penpower be held liable for the possibility of loss, notwithstanding Penpower may be aware of the possibility of such loss.

#### **8. Prohibition Against Sublicense**

You are prohibited to assign the license in respect of the Software granted to you under this Agreement, or to grant a sublicense to another person.

#### **9. Jurisdiction**

With regards to any disputes arising from this Agreement, Penpower and you agree that the court having jurisdiction over the business location of Penpower will be the court in the first instance.

#### **10. Miscellaneous**

In the event that any provision of this Agreement is found to be invalid at law, such invalidity will not affect the validity of any other provisions, or the legal enforceability of such other provisions.

In the event that the Software cannot be executed under conditions of normal use, due to any damage to the original disk/s, Penpower will replace the disk/s free of charge.

# CONTENTS

<b>Chapter 1 Product Features.....</b>	<b>1-1</b>
<b>Chapter 2 Installation.....</b>	<b>2-1</b>
2.1 System Requirements.....	2-1
2.2 Hardware Specification.....	2-1
2.3 Software Installation.....	2-2
2.4 Hardware Installation.....	2-6
<b>Chapter 3 Character Input.....</b>	<b>3-1</b>
3.1 Open Penpower mini ScanEYE II.....	3-1
3.1.1 miniScanEYE Tool Bar.....	3-1
3.2 Scan to Computer.....	3-3
3.2.1 Send Text.....	3-3
3.2.2 Send Image.....	3-3
3.3 Settings and Scan Tips.....	3-4
3.3.1 Language Settings.....	3-4
3.3.2 Scan Direction.....	3-5
3.3.3 Speech.....	3-5
3.3.4 Scanning Horizontal or Vertically Aligned Text.....	3-7
3.3.5 Property Settings.....	3-7
3.3.6 Interface Language Settings.....	3-8
3.4 Displaying Original Image.....	3-8



---

## **Chapter 1 Product Features**

- **Minimize your typing efforts**

Scans words, sentences, and excerpts from printed materials and converts them into editable texts with a high accuracy rate for applications such as Words, Excel, Outlook, and text editors.

- **Recognize multiple languages**

Recognizes English, Traditional Chinese, Simplified Chinese, Japanese and Korean languages.

- **Ergonomic design**

The light and ergonomic design fits all right and left-handed users and makes you hold with comfort even long-time scan. Scan away effortlessly with the transparent scan tip. Where you see, where you scan.

- **Seamless scanning**

Users don't have to pause and wait for the recognition to be done to continue with another scan. They can just keep scanning and focus their attention to scanning properly their interested excerpts

- **A great language learning tool**

No worry about typing and learning unfamiliar languages, by scanning words or sentences to certain language translation websites and see their translations, you will find mini Scan-EYE is a wonderful companion for learning languages.



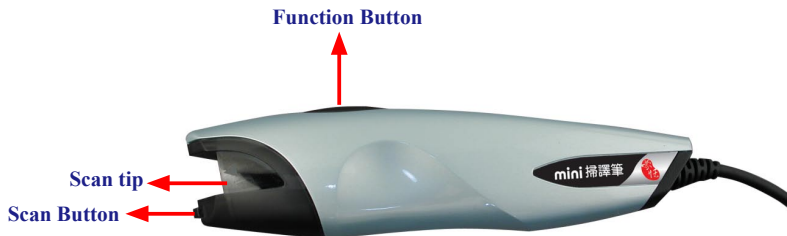
## Chapter 2 Installation

### 2.1 System Requirements

- Pentium II 300 CPU or above
- 128MB of RAM
- 250MB of available hard disk space
- Windows 2000/XP/Vista
- USB port

### 2.2 Hardware Specification

- Dimensions: 131mm x 31mm x 19mm
- Weight: 45g (excludes USB cable)
- Interface: USB 2.0
- Scanning speed: 15 cm/sec
- Character size: 5~22 pt



#### ***Function button:***

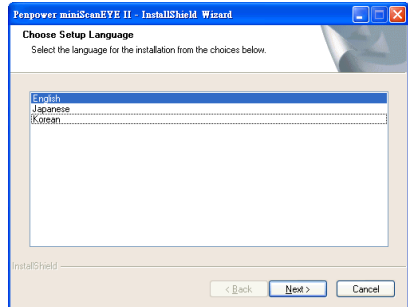
When scanning words, the function button can be used as Enter function. It also works as checking next word in the Penpower Translator.



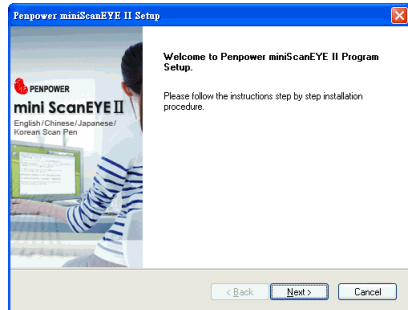


## 2.3 Software Installation

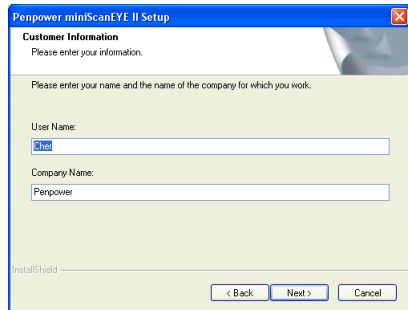
1. Insert the mini ScanEYE II setup CD into your CD-Rom drive. System will run installation program automatically. Please select an installation language and click **Next** to install.



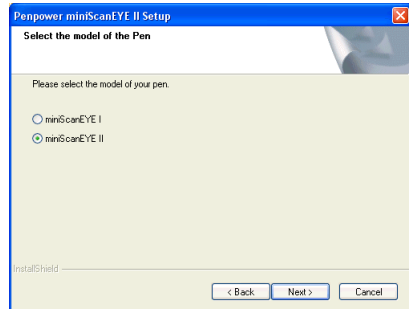
2. Click on **Next** to continue.



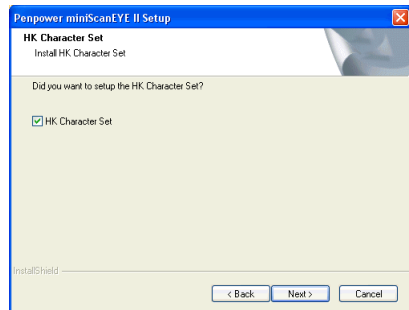
3. Key in your user name, company name and click **Next** to continue.



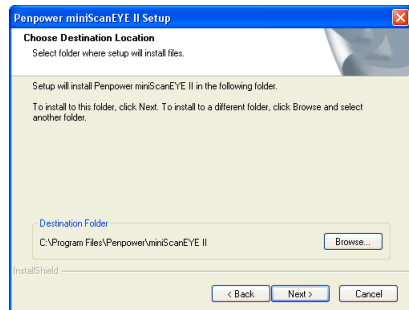
4. Please select the type of the mini ScanEYE II, then click **Next** to continue.



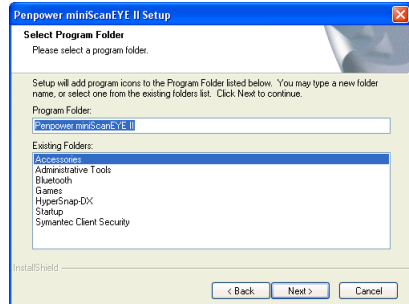
5. Please choose to installtion the Hong Kong characters or not, then click **Next** to continue.



6. Choose the destination folder to install the software. This is usually left as default. Click **Next** to continue.

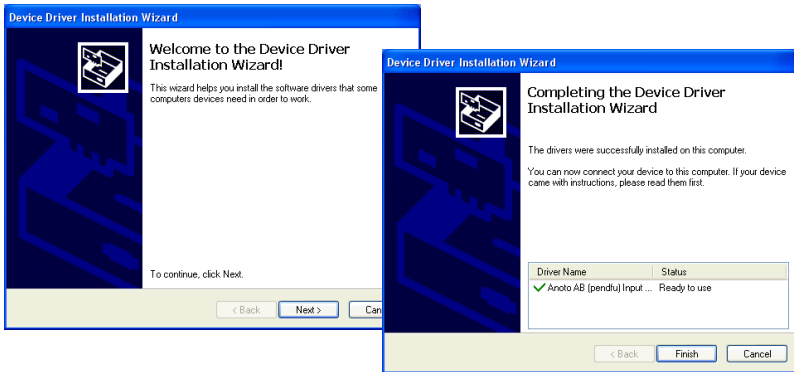


7. Choose the folder that you want to install mini ScanEYE II to in Program Files. This is usually left as default. Click **Next** to continue.

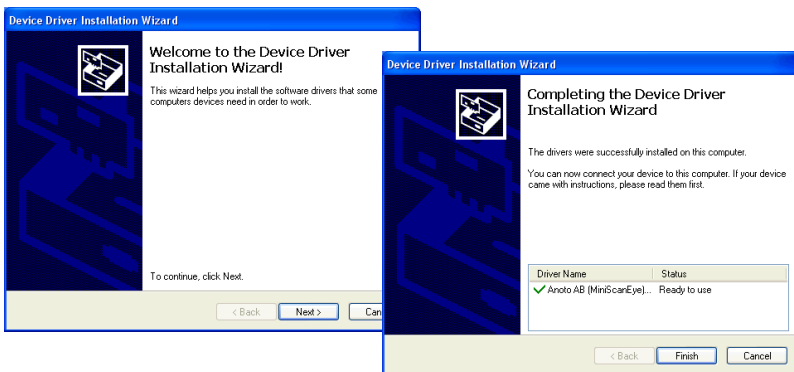




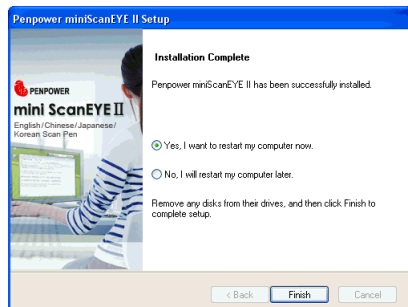
8. Click **Next** to install InputPan driver. Click **Finish** to finish installing InputPan driver.



9. Click **Next** to install MiniScanEye driver. Click **Finish** to finish installing MiniScanEye driver.



10. Click **Finish** to restart your computer.

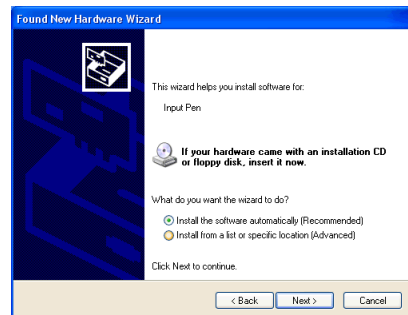


## 2.4 Hardware Installation

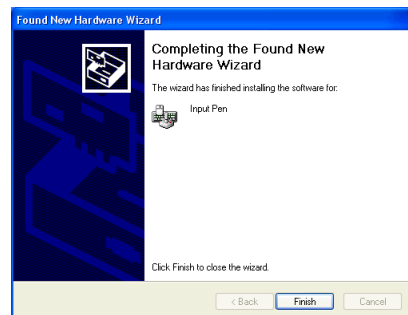
1. Plug in the mini ScanEYE II into your computer's USB port and a window will appear, welcoming you to the hardware installation wizard. Select **[No, not this time]** and click **Next** to continue.

*Note: Some computers may shut down accidentally after connection. This is due to lack of power to support several USB devices. To avoid this problem, connect your mini ScanEYE and other USB devices to an extra-powered USB hub.*

2. Select **[Install the software automatically]** and click **Next** to continue.

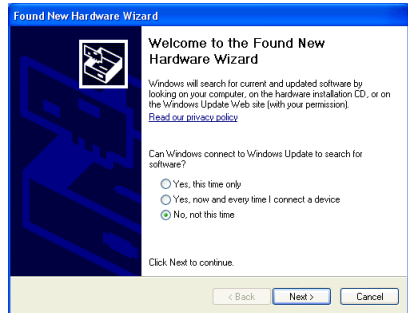


3. Click on **Finish** to end the installation.

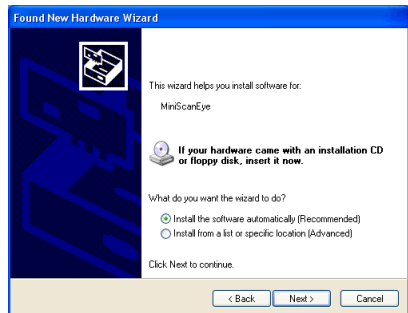




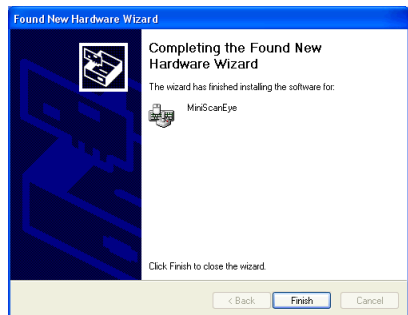
- When first time execute mini ScanEYE II, a finding mini ScanEye hardware message will appear. Select **[No, not this time]** and click **Next** to continue.



- Select **[Install the software automatically]** and click **Next** to continue.




- Click on **Finish** to end the installation.



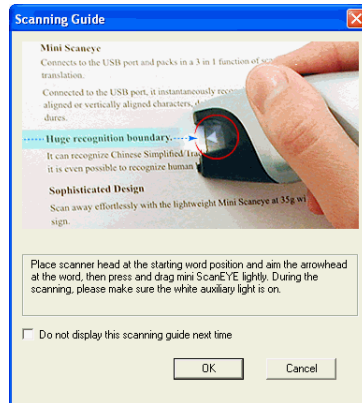
*Note: When connecting mini ScanEYE to another USB port, you may follow the Hardware installation steps to install the Found New Hardware Wizard.*

## Chapter 3 Character Input

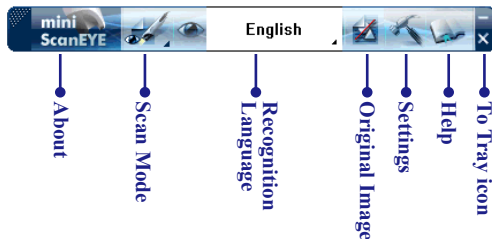
### 3.1 Open Penpower mini ScanEYE II


Go to [Start/All Programs/Penpower miniScanEYE II /Penpower miniScanEYE II] or double click the button  on the desktop to start miniScanEYE tool bar.

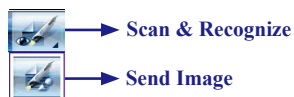
*Note: When running the miniScanEYE II first time, the Scanning Guide's window will appear. Please use the miniScanEYE II as the Guide show you.*



#### 3.1.1 miniScanEYE Tool Bar







1. **Scan Mode:** Provide [Scan & Recognize] and [Send Image], click  to select scan mode. If you select **Scan & Recognize** mode, it will scan and recognize text to your computer. If you select **Send Image** mode, it will send the scanned image to your computer.



*Note: When you use Send Image mode, you need to run the software which supports image format such as MS Word.*



2. **Recognition Language:** mini ScanEYE can recognize English, Traditional Chinese, Simplified Chinese, Japanese and Korean languages. Click  to select the language you desire to recognize.
3. Click  to minimize the tool bar to Taskbar.
4. Click  to minimize the tool bar to tray icon. Double-click the tray icon will open the tool bar. Right click on  to open the function menu.



## 3.2 Scan to Computer

### 3.2.1 Scan & Recognize

1. Select **[Scan & Recognize]** from **[Scan Mode]**.
2. Select the language you desire to recognize from **[Recognition Language]**.
3. Open any word processor (i.e Microsoft Word or Wordpad) and place your cursor in there as usual before you start typing.
4. Place a document on the table and place scanner head at the starting word position and aim the arrowhead at the word, then press and drag mini ScanEYE gently.
5. The characters that the pen has passed through will be recognized to your desired word processor as following:

Business Card Recognition System

### 3.2.2 Send Image

1. Select **[Send Image]** from **[Scan Mode]**.
2. Open a word processor which can contain images (i.e Microsoft Word) and place your cursor in there as usual before you start typing.
3. Place a document on the table and place scanner head at the starting word position and aim the arrowhead at the word, then press and drag mini ScanEYE gently.
4. The characters or pictures that the pen has passed through will be scanned to your desired word processor as following:








## 3.3 Settings and Scan Tips

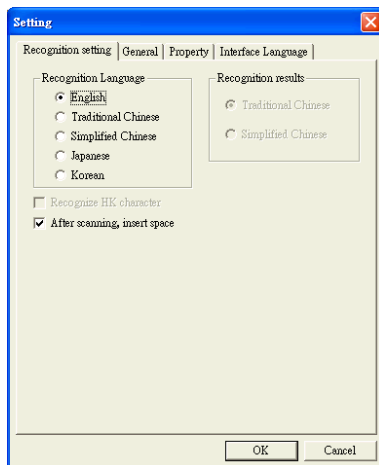
### 3.3.1 Language Settings

Besides selecting recognition language from the tool bar, you can also click **[Settings]**  from the tool bar to select recognition language and recognition results. Different settings will get different recognition results.

In **[Recognition Setting]**, you will find Traditional Chinese, Simplified Chinese, English, Japanese and Korean under **Recognition Language** setting.

**Recognition Language:** Based on your document to choose the correct recognition language.

**Recognition Results:** Select the type of Chinese in the targeted scanning results.

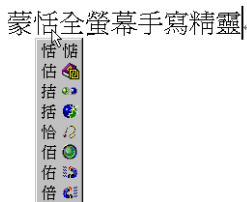


### Traditional Chinese and Simplified Chinese

When you select Traditional Chinese or Simplified Chinese, you can find the setting of Recognition results on the right side, select the one you wish to input to computer.

Below the **[Recognition Setting]**, you can find **[Recognize HK character]**, depends on your needs to check. It also provide **[Balloon Interface]** for the following functions: correct the certain character, pre-emptive linking, character combination, character split, phrase correction, displaying original image, punctuation, online translation.

You can leave your cursor on the character for 1-2 seconds the balloon interface will show up.



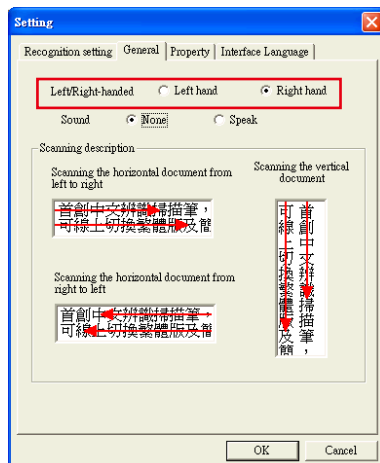
*Tip: mini ScanEYE II can actually convert Traditional text on your document to a Simplified Chinese oriented result vice versa, in which you can select a different combination.*

### 3.3.2 Scan Direction

#### \* Scan Direction Settings

mini ScanEYE II must be used to scan the characters in a consistent direction, any changes to the direction will cause inaccurate recognition results.

Go to the **General** tab and you will be able to change the configuration settings according to how you hold the pen and the direction which you want to scan.



#### \* Scanning Vertically Aligned Text

When scanning vertically aligned text, please scan the text in top to bottom fashion and have the characters centered at the middle of your pen as indicated by the centre marker line.





### \* Scanning Horizontal Text

When scanning horizontal text, you can choose the left-hand or right-hand option and please the pen on the text, moving from left to right or right to left depending on the option you have set previously.



**Right hand: Scanning from left to right or Scanning from right to left**



**Left hand: Scanning from left to right or Scanning from right to left.**

**Note:** Penpower mini ScanEYE II is able to scan and recognize one row of characters at any time, please place the pen in such a way that the centre marker is at the centre of the character.

### 3.3.3 Speech

mini ScanEYE II can speak English, Mandarin and Cantonese. When select Traditional Chinese or Simplified Chinese as the Recognition Language in the Recognition setting, it will be able to speak **Mandarin** and **Cantonese**. When select **English**, you can choose speak or none speak.

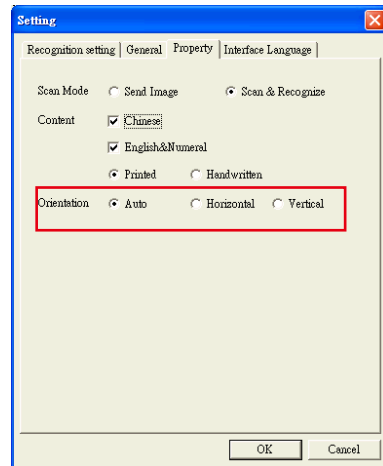
**Note:** mini ScanEYE II does not provide Japanese and Korean speech.

### 3.3.4 Scanning Horizontal or Vertically Aligned Text

When you install the Penpower mini ScanEYE II, the default setting for the text direction is detect automatically. However, you can manually set the desired text direction of your choice and start scanning too. You can still leave it at default being detected automatically but however, as mini ScanEYE II will need to detect the text direction, scanning speed will be slower too.

If you know that all your text is in a certain direction, you can set the mini ScanEYE II to scan in only one direction based on the setting just discussed: **Horizontal** or **Vertical**.

Go to the **Property** tab and choose your desired text direction under **Orientation**.

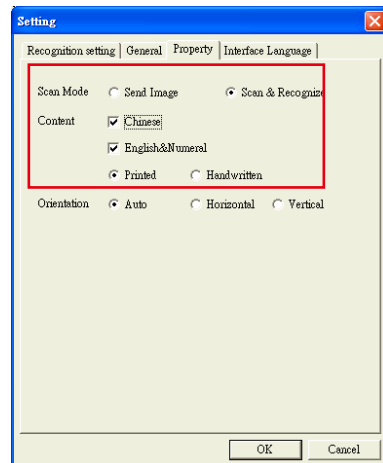


### 3.3.5 Property Settings

In **Property** Settings, provides selection of **Scan Mode** and **Content**. Depend on your desire to select **Scan Mode**. If you select **Scan & Recognize**, it will scan and recognize text to your computer. If you select **Send Image**, it will send the scanned image to your computer.

***Note:** When you use Send Image, you need to run the software which supports image format such as MS Word.*

You can depend on the document you want to scan to select **Content**. It provides Chinese, Japanese, Korean, English & Numeral, **Printed** or **Handwritten**. Select identical language for higher accuracy.



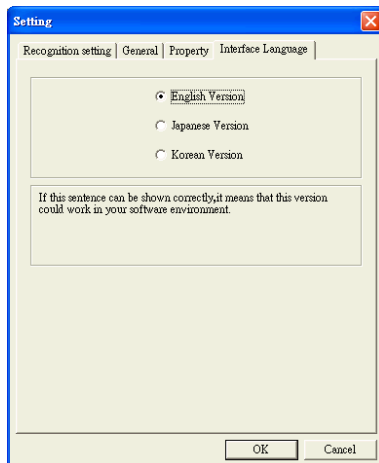
***Tip:** When scanning handwritten text, the scanning results may vary according to handwriting, so the optimal recognition can be achieved when the text is properly aligned and the size must be within the scanning range of the pen.*



### 3.3.6 Interface Language Settings

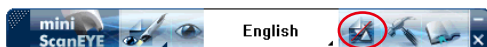
Interface Language Settings can let you choose English, Japanese or Korean for user interface language. After choosing the language, you may check the description.

If the description does not display properly, which means your Windows OS does not support the language display. Please choose another language.



### 3.4 Displaying Original Image

Click [**Original Image**] button on the tool bar to open the **Original Image** windows. Then you can check your original scanned image to compare with the original text when scanning.



# **Penpower mini ScanEYE II V2.2.1 User Manual**

Edition: Released in May, 2008

Penpower Technology Ltd.,