

# **Penpower mini ScanEYE**

## **User Manual**

Release: April, 2012  
Version: V 3.5.0 EJK

# **Penpower Technology Ltd.**

## **Software User License Agreement**

You are licensed to legally use this software program (“the Software”) by Penpower Technology Ltd (“Penpower”) under this license agreement (“The Agreement”). If you do not agree with any of the provisions in this Agreement, please do not install, copy or use the Software. By using the Software, you are deemed to fully understand and accept the provisions of this Agreement.

### **1. Intellectual Property**

All intellectual property rights in the Software, together with all information and documents included in the packaging for the Software (including but not limited to copyrights), are property of Penpower or have been licensed to Penpower, and are protected by relevant laws and regulations.

### **2. License to Use**

You are authorized to use the Software on one (1) single computer only. You may not use the Software on any other machines other than the said single computer.

### **3. Authority to Copy**

The Software and all documents included with the Software, and copyright thereof, are property of Penpower. You are licensed to make one (1) copy of the Software for your personal backup purposes. All other acts of copying are strictly prohibited. The backup copy shall not be installed nor used while the Software is being used.

You may not sell, lease, disassemble, reverse engineer, copy, translate, adapt or derive the Software, or obtain the source code of the Software by any other means. You may not use the Software for any purposes other than those permitted under this Agreement.

### **4. Business Users**

If you need to install or use the Software on more than one (1) computer, please contact Penpower or our local distributor to purchase a license for the additional use.

### **5. Liability**

You agree to indemnify Penpower against all losses, costs, debts, settlement payments or other expenses (including but not limited to attorneys fees) arising from your breach of this Agreement, and you agree to compensate Penpower for all of the abovementioned damages.

### **6. No Warranty**

Effectiveness of a packaged software in handling information is closely related to its software and hardware environment. The Software is published following careful development and product testing by Penpower, but Penpower is not able to conduct tests based on all possible combinations of software and hardware environment. Therefore,

Penpower is unable to promise nor warrant that there will be absolutely no risk of loss or damage of information, or any other kind of loss, during installation and/or execution of the Software. You must be fully aware of your risks in using the Software.

Penpower will provide you with the Software and support services in respect of the Software to the maximum extent permitted by law. However, Penpower does not warrant that the Software and information included in the package of the Software contain no defects or errors. Penpower is not liable for any indirect, special or incidental loss arising from the Software, including but not limited to loss of profits, damage to business reputation, cessation of work, hardware malfunction or damage, or any other commercial damage or loss arising from commercial use of the Software.

#### **7. Limitation of Liability and Damages**

Except as expressly specified and expressly agreed to in writing by Penpower, Penpower shall not be responsible for any damage incurred by you for any reason under this Agreement. The maximum amount of compensation payable by Penpower, in respect of any damage incurred by you for any reason under this Agreement, is limited to the amount you have already paid to Penpower in respect of the Software.

Under no circumstances will Penpower be held liable for the possibility of loss, notwithstanding Penpower may be aware of the possibility of such loss.

#### **8. Prohibition Against Sublicense**

You are prohibited to assign the license in respect of the Software granted to you under this Agreement, or to grant a sublicense to another person.

#### **9. Jurisdiction**

With regards to any disputes arising from this Agreement, Penpower and you agree that the court having jurisdiction over the business location of Penpower will be the court in the first instance.

#### **10. Miscellaneous**

In the event that any provision of this Agreement is found to be invalid at law, such invalidity will not affect the validity of any other provisions, or the legal enforceability of such other provisions.

In the event that the Software cannot be executed under conditions of normal use, due to any damage to the original disk/s, Penpower will replace the disk/s free of charge.

# Contents

<b>Chapter 1 Product Features .....</b>	<b>1-1</b>
<b>Chapter 2 Getting Started .....</b>	<b>2-1</b>
2.1 System Requirements .....	2-1
2.2 Hardware Specification .....	2-1
2.3 Software Installation .....	2-2
2.4 Driver Installation .....	2-4
2.5 Launching mini ScanEYE .....	2-5
2.6 Registration .....	2-5
<b>Chapter 3 Scanning and Settings .....</b>	<b>3-1</b>
3.1 mini ScanEYE Toolbar .....	3-1
3.2 Scan Text and Image .....	3-3
3.2.1 Text Mode .....	3-3
3.2.2 Image Mode .....	3-3
3.3 Online Translation .....	3-4
3.3.1 Dictionary .....	3-4
3.3.2 Sentence Translation .....	3-5
3.4 Business Mode .....	3-6
3.5 Original Image .....	3-7
3.6 Settings .....	3-8
3.6.1 General Settings .....	3-8
3.6.2 Recognition Settings .....	3-10
3.6.3 Business Mode .....	3-12
3.7 Help .....	3-13
3.8 About .....	3-13
<b>Chapter 4 Penpower Voice Reader .....</b>	<b>4-1</b>
4.1 Open Penpower Voice Reader .....	4-1
4.2 Voice Reader Setting .....	4-2
4.3 Turn off Penpower Voice Reader .....	4-2

There may be newer versions of the software that was released during or after this product's manufacturing date. If the content in the User Manual differs from the on-screen interface, please follow the instructions on the on-screen interface instead of the User Manual.

## Chapter 1 Product Features

- **Minimize your typing efforts**

Scan words, sentences, and excerpts from printed materials and convert them into editable texts with a high accuracy rate for applications such as Words, Excel, Outlook, and etc.

- **Recognize 193 languages**

mini ScanEYE can scan and recognize 193 languages, including English, French, German, Italian, Spanish, Japanese, Korean, Simplified Chinese, Traditional Chinese, and etc. For the detailed recognition language list, please refer to the appendix.

- **Ergonomic design**

The light and ergonomic design fits all right and left-handed users and makes you hold with comfort even long-time scan. Scan away effortlessly with the transparent scan tip. Where you see, where you scan.

- **Seamless scanning**

Users do not have to pause and wait for the recognition to be done to continue with another scan. They can just keep scanning and focus their attention to scanning properly their interested excerpts

- **A great language learning tool**

Don't worry about typing and learning unfamiliar languages. By using mini ScanEYE's dictionary function, you can see the translations of the words or sentences you scan immediately. You will find mini ScanEYE a wonderful companion for learning languages.

- **Penpower Voice Reader**

Penpower Voice Reader utilizes a state of the art text-to-speech technology, it will read in fluent Mandarin or Cantonese of any articles. You can use it as a tool for fast proof-reading or in teaching the correct Mandarin/Cantonese pronunciation.

- **Support Business Mode**

mini ScanEYE provides with the business mode, which supports the recognition of barcodes and fonts such as OCR-A/B, MS Gothic, and MICR fonts. With the business mode, you can scan and recognize barcodes and numbers or characters on invoices, checks, bills, coupons, and ect.

## Chapter 2 Getting Started

### 2.1 System Requirements

- Pentium II 300 CPU or above
- 512MB of RAM
- 650MB of available hard disk space
- Windows 7/Vista/XP OS
- CD-ROM Drive
- USB port

### 2.2 Hardware Specification

- Dimensions: 130mm x 37mm x 18.5mm
- Weight: 30g (excluding USB Adapter)
- Interface: USB 2.0
- Scanning speed: 15 cm/sec.
- Character size: 5~22 pt



#### ***Function Button:***

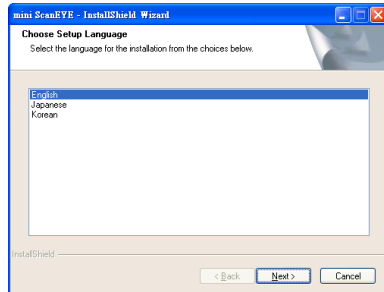
While scanning text or images, the function button functions as the **[Enter]** key on the keyboard.

*Tip: You can refer Section 3.6.1 to configure the function button as Enter, Tab, and-Space.*

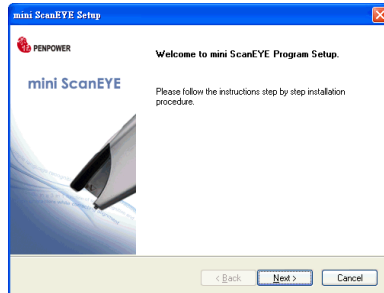


## 2.3 Software Installation

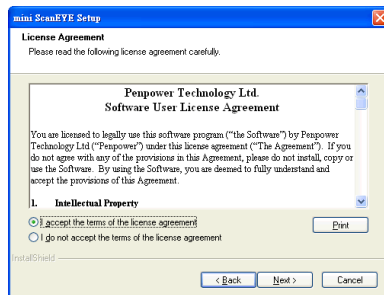
1. Insert the mini ScanEYE setup CD into the CD-ROM drive. The installation program will start automatically. Please select an installation language and click [Next] to install.



2. Click [Next] to install.

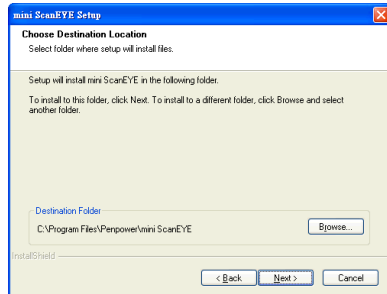


3. Please read the License Agreement, select **[I accept the terms of the license agreement]** and click [Next] to continue.

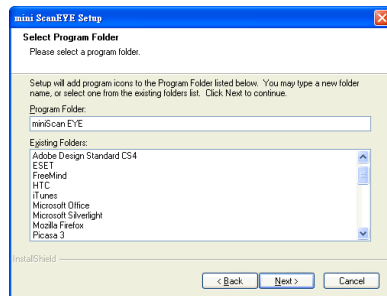




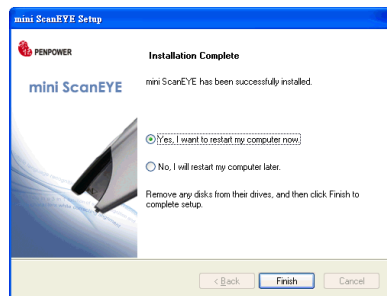
4. Select a destination folder to install the software to. Click **[Next]** to continue.



5. Choose the program folder that you want to install **mini ScanEYE** to. If left as default, the software will create a new folder for you. Click **[Next]** to start installation.



6. When the installation is completed, please restart your computer. Click **[Finish]** to restart your computer.



*Note: When installing in the Windows 7 or Vista OS, the system may pop-up a warning message twice. Please select [Continue Anyway] to install the driver.*



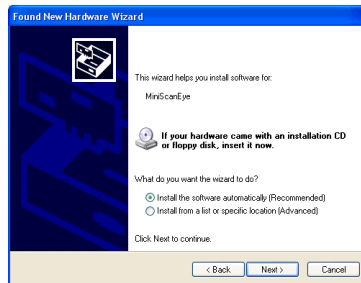
## 2.4 Driver Installation

1. Plug the mini ScanEYE pen into your computer's USB port and a window will appear. Select **[No, not this time]** and click **[Next]** to continue.



*Note: Some computers may shut down accidentally after connection. This is due to the lack of power to support several USB devices. To avoid this problem, connect your mini ScanEYE and other USB devices to an extra-powered USB hub.*

2. Select **[Install the software automatically]** and click **[Next]** to continue.




3. Click **[Finish]** to end the installation.




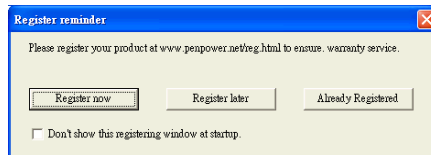
*Note: When connecting the scan pen to another USB port, follow these same steps to install again.*

## 2.5 Launching mini ScanEYE

Go to [Start/All Programs/ Penpower mini ScanEYE /mini ScanEYE] or double-click the  shortcut on the desktop to start the **mini ScanEYE** toolbar.

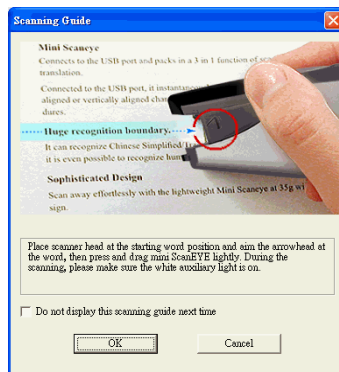
## 2.6 Registration

When running the **mini ScanEYE** for the first time, a [Registration Reminder] will appear. Please click on [Register now] to connect to the registration website at <http://www.penpower.net/reg.html>. After registration, you would receive the warranty service. You can also click [Register later] to close the reminder. When you need to register, click the [Tools]  button and select [About] from the toolbar and then click on [Registration]. If you have already registered, please click [Already Registered].




*Tip: If you do not need to be reminded again, you can check [Don't show this registering window at startup].*

A [Scanning Guide] will appear after the registration reminder.

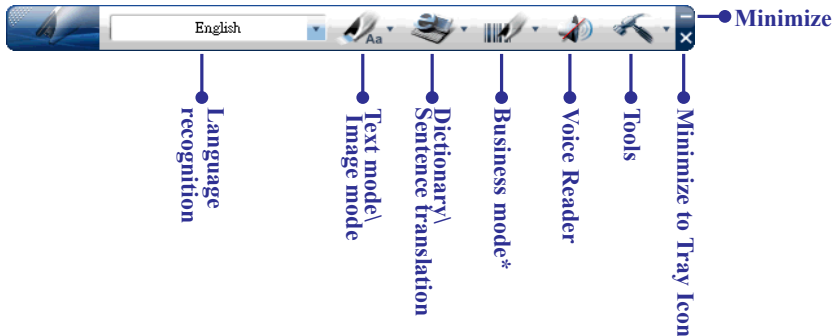






*Note: If you don't want to read the message again, you can check [Do not display this scanning guide next time], and click [OK].*

## Chapter 3 Scanning and Settings

Go to [Start/All Programs/Penpower mini ScanEYE /mini ScanEYE] or double-click the  shortcut on the desktop to start the **mini ScanEYE** toolbar.

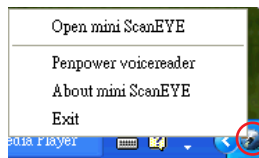
### 3.1 mini ScanEYE Toolbar



1. **Language recognition:** **mini ScanEYE** can scan and recognize 193 languages, including English, French, German, Italian, Spanish, Japanese, Korean, Simplified Chinese, Traditional Chinese, and more. Click the language field to select the language you would like to scan. For more information about the recognition languages, please refer the appendix.
2. **Text mode:** The [Text mode]  is the default scan mode for scanning an article or a sentence directly. The scanned word or sentence will be recognized and sent as typed text to your computer. Please refer to 3.2.1 **Text Mode** for more detailed information.
3. **Image mode:** You can select [Image mode] in the drop-down menu from the button  to scan images or text. They will be sent to your computer in image formats. Please refer to 3.2.2 **Image Mode** for more detailed information.
4. **Dictionary:** Selecting [Dictionary] in the drop-down menu from the button  can provide you the translation result of every scanned word. Please refer to 3.3 **Online Translation** for more detailed information.
5. **Sentence translation:** Selecting [Sentence translation] in the drop-down menu from the button  will provide the translations of the sentences you scan. Please refer to 3.3 **Online Translation** for more detailed information.




6. **Business Mode** : You can select [**Barcode**], [**MICR**], or [**OCR A/B**] from **Business Mode**. These modes allow you to scan barcodes, invoices, checks, bills, postal codes, coupon numbers, and racing numbers. In order to have higher recognition accuracy, you may use the **Business mode** to recognize different documents. Please refer to 3.4 **Business Mode** for more detailed information.
7. **Voice Reader** : Read aloud Chinese articles in Mandarin or Cantonese. Please refer to Chapter 4 **Penpower Voice Reader**.
8. **Tools** : Provide Original Image, Settings, Help and About miniScan EYE.
  - . **Original Image**: Display the scanned image. See 3.4 Displaying Original Image.
  - . **Settings**: Provide general, recognition, and business mode settings. See 3.6 Settings for more detailed information.
  - . **Help**: Open this user manual.
  - . **About**: See the product information.
9. **Minimize** : Click to minimize the toolbar.
10. **Minimize to Tray Icon** : Click minimize the toolbar into a tray icon. Double-click the tray icon on the bottom-right of the screen to open the toolbar. Double-click to open the function menu.




*\* The Business Mode function is only available for mini ScanEYE PRO version.*

## 3.2 Scan Text and Image


### 3.2.1 Text Mode


When you want to scan an article or a sentence directly into your computer, you can use [Text mode]  :

1. Select [Text mode] in the drop-down menu from the button .
2. Select the language of the text that you want to scan from [Language recognition].
3. Open any word processor, for example Microsoft Word or WordPad, and then click the location where you want to input.
4. Place a document on a flat surface and place the scan tip at the front of your desired scan area. Aim the scan tip arrow at the center of the desired scan area, and then press and drag the **mini ScanEYE** pen in a straight line across the area like a highlighter. During the scanning, please make sure the white auxiliary light is on.
5. Stop applying pressure to the pen to stop scanning. The text that the pen has scanned will be displayed in your word processor immediately.

*Note: mini ScanEYE is able to scan and recognize one row of characters at a time. Please place the scan tip arrow at the center of the line.*

### 3.2.2 Image Mode

When you want to scan text or images into your computer in image formats, you can use [Image mode] .

1. Select [Image mode] in drop-down menu from the button .
2. Open a word processor that is able to input images, for example Microsoft Word. Click the location where you would like to input the scanned images.
3. Place a document on the a flat surface and place the scan tip at the starting word or picture. Aim the scan tip arrow at the center of the scan area, and then press and drag the scan pen in a straight line like a highlighter. The white auxiliary light from the scan tip indicates the pen is scanning.
4. Stop applying pressure to the scan pen to stop scanning. The scanned picture will be displayed in your word processor in an image format.









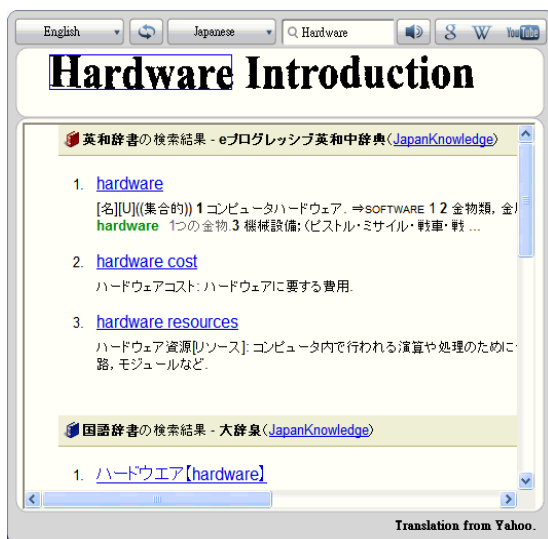
### 3.3 Online Translation





mini ScanEYE provides online translation function to translate scanned words and sentences by [Dictionary] and [Sentence Translation]. mini ScanEYE collects the translations results from websites and display them in its translation window.

*Note: Please connect to the internet while using the online translation function.*







#### 3.3.1 Dictionary

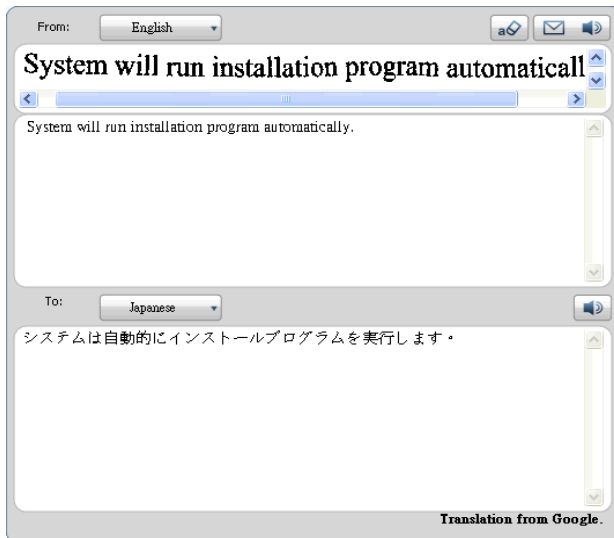
1. Select [Dictionary] in the drop-down menu from the button .
2. Select the language you want to translate from and the language you want to translate to.   
3. Aim the scan tip arrow at the center of the desired scan area, and then press and drag the **mini ScanEYE** pen in a straight line across the area like a highlighter. During the scanning, please make sure the white auxiliary light is on.
4. Stop applying pressure to the scan pen to stop scanning. The word and its translation result will be displayed in the window as below. At the bottom of the window, you can see the source of the translation. If you scan more than one word, you can press the [Function button] on the scan pen to see the translation of the next recognizable word.



5. The translated word will also be shown in the search box. You can click  to listen to the pronunciation of this word or click    to search for more information on Google, Wikipedia, or YouTube. You can also type in the search bar to find more information.

### 3.3.2 Sentence Translation

1. Select **[Sentence translation]** in the drop-down menu from the button .
2. Select the language you want to translate from **From:**  and the language you want to translate to **To:** .
3. Aim the scan tip arrow at the center of the desired scan area, and then press and drag the **mini ScanEYE** pen in a straight line across the area like a highlighter. During the scanning, please make sure the white auxiliary light is on. The original image, scanned sentence, and translation result will be displayed automatically in the window as below.
4. You can click  to delete the contents, click  to send the scanned text out by e-mail, and click  to listen to the pronunciation.



*Tip: You can select words in the sentence and see their translations.*

run installation **program** automatically.

program

**Translate:**

プログラム





### 3.4 Business Mode

The Business Mode allows you to scan barcodes, invoices, checks, bills, postal codes, coupon numbers, racing numbers, and etc. The fonts which the Business Mode supports are OCR A, OCR B, MS Gothic, and MICR fonts as the samples below:

- OCR A: 0 1 2 3 A B C a b c
- OCR B: 0 1 2 3 A B C a b c
- MS Gothic: 0 1 2 3 A B C a b c
- MICR (E-13B): 1 2 3 4 5 6 7 8 9 0

For barcodes, the Business Mode supports Codabar, Code 128, Code 39, Code 93, EAN 8, EAN 13, IATA 2 of 5, Industrial 2 of 5, Interleaved 2 of 5, Matrix 2 of 5, Patch, PostNet, UCC-128, UPC-A, and UPC-E.

In order to have higher recognition accuracy, you may use the **[Business Mode]** to recognize these fonts:

1. Select **[Barcode]**, **[MICR]**, or **[OCR A/B]** in the drop-down menu from the button .

***Note:** For higher recognition accuracy, before you start the Business Mode, please select the font that you want to scan in [Tools] \ [Settings] \ [Business Mode]. Please refer to 3.6.3 Recognition Settings.*


2. Open your application or any word processor, for example Microsoft Word. Click the location where you would like to input the scanned text or numbers.
3. Place a document on a flat surface and place the scan tip at the front of your desired scan area. Aim the scan tip arrow at the center of the desired scan area, and then press and drag the **mini ScanEYE** pen in a straight line across the area like a highlighter. During the scanning, please make sure the white auxiliary light is on.
4. Stop applying pressure to the pen to stop scanning. The scanned text or numbers are displayed in your application or word processor immediately.

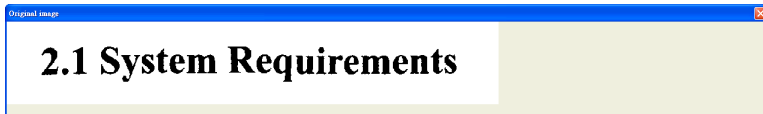
***Note 1:** When scanning barcodes, please aim mini ScanEYE at the upper side of barcodes, not at the center, to have higher recognition accuracy.*

***Note 2:** The Business Mode function is only available for mini ScanEYE PRO version.*

***Tip:** You can select a range of your desired scan document in the Settings to have higher recognition accuracy. Please refer to 3.6.3 Recognition Settings.*

## 3.5 Original Image

Click [Tools]  button and select the [Original Image] option from the drop-down menu to open the [Original Image] window. After scanning, the [Original Image] window displays the scanned image. You can check the scanned image to compare with the original text. This can help you improving your scan technique for more accurate recognition results.



*Tip: You can right click on the original image to save the image to .bmp or .pcx file.*

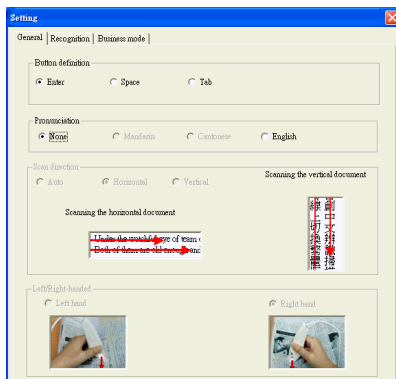


## 3.6 Settings

Click [Tools]  button and select [Settings] from the drop-down menu to set the preferences.

### 3.6.1 General Settings

In the [General] setting page, you can set up the button definition, pronunciation, scan direction, and left/right-handed preference.



#### Button Definition

The default function of Function Button is Enter. You can replace Enter by Space and Tab. Select the options under Button definition and then you can select which function you want the Function Button to be.

#### Pronunciation

When choosing the Traditional Chinese or Simplified Chinese as the language recognition, you can choose to listen the speech of the recognized word in Mandarin or Cantonese.

When choosing the English as the language recognition, you can choose to listen the speech of the recognized English word.

#### Scan Direction

**mini ScanEYE** must be used to scan the characters in consistent direction, so any changes to the direction will cause inaccurate recognition results.

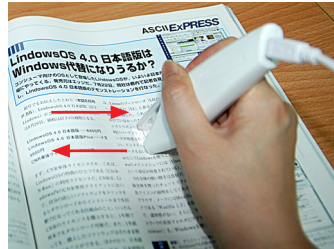
When choosing Traditional Chinese, Simplified Chinese, Japanese, or Korean as the recognition language, you can accord to the document you want to scan to choose the scan direction manually.

### Scanning Horizontal Text

When scanning horizontal text, you can choose the **[Horizontal]** option. Place the pen on the text or image, move the pen left-to-right or right-to-left when scanning.



**Left hand:**  
Scan from right-to-left or from left-to-right



**Right hand:**  
Scan from left-to-right or from right-to-left

*Note: The Left/Right-handed option is only available when you select the vertical direction.*

### Scanning Vertically Aligned Text

When scanning vertically aligned text, you can choose **[Vertically]** and then select **[Left-hand]** or **[Right-hand]**. You may scan the text in a straight top-to-bottom fashion. Align the Scan Tip arrow on your pen to the center of the characters.



**Left Hand**

**Left hand:** Scan from up to down



**Right Hand**

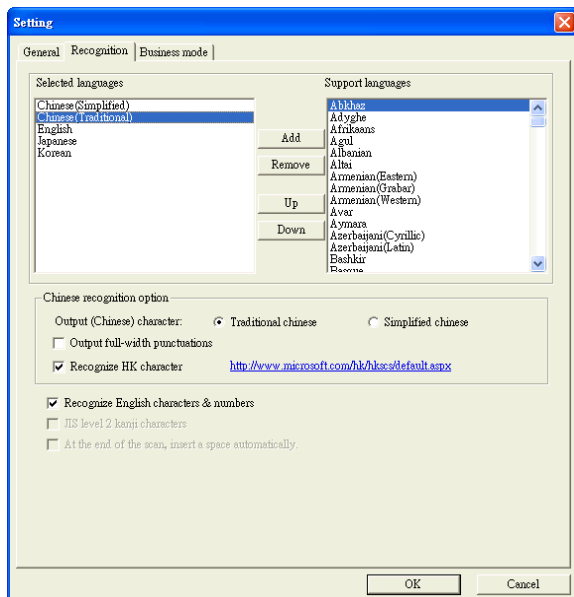
**Right hand:** Scan from up to down

*Note: mini ScanEYE is able to scan and recognize one row of characters at a time. Please place the pen in such a manner so that the Scan Tip arrow is at the center of the line of text.*



### 3.6.2 Recognition Settings

In the [Recognition] page, you can set up the recognition languages, Chinese recognition option, recognition contents and at the end of scan, insert a space automatically.



### Recognition Languages

mini ScanEYE provides 193 recognition languages for you to choose. In the toolbar, you can drag down the recognition menu to select the recognition language you want.

You can modify the recognition language menu in the Recognition Language tab of Setting. In the Recognition Language Tab, the right column contains 193 recognition languages for you to choose. The languages appear in the left column will all appear on the recognition language drag down menu on the tool bar. In this tab, you can select the recognition language in the right column and click [add] to add it into the left column. If you want to remove a language from the left column, you can select the language you want to remove and click [Remove] to remove it from the left column.

**Tip:** Select a language in the right column and click **Up** or **Down**, you can change this language's order.

### **Chinese Recognition Option**

When choosing Chinese Traditional or Chinese Simplified as the language recognition, you can choose to output the recognized characters in Traditional Chinese or Simplified Chinese. Check the **[Output full-width punctuations]** option to set the punctuations as full-width. When choosing the Chinese Traditional as the language recognition, you can check the **[Recognize HK Character]** to recognize Hongkong characters. If you do not need to recognize Hongkong characters, please do not check it for higher recognition accuracy. You can connect to the <http://www.microsoft.com/hk/hkses/default.aspx> to check the Hong Kong characters list.

### **Recognize English characters & numbers**

You can select **[Recognize English characters & numbers]** to make mini ScanEYE recognize English characters and numbers when choosing Traditional Chinese, Simplified Chinese, Japanese or Korean as the language recognition,

### **JIS Level 2 Kanji Characters**

When choosing the Japanese as the language recognition, you can check the **[JIS Level 2 Kanji Characters]** to recognize the JIS level 2 Kanji characters. If you do not need to recognize JIS level 2 Kanji characters, please do not check it for higher recognition accuracy.

### **At the End of the Scan, Insert a Space Automatically**

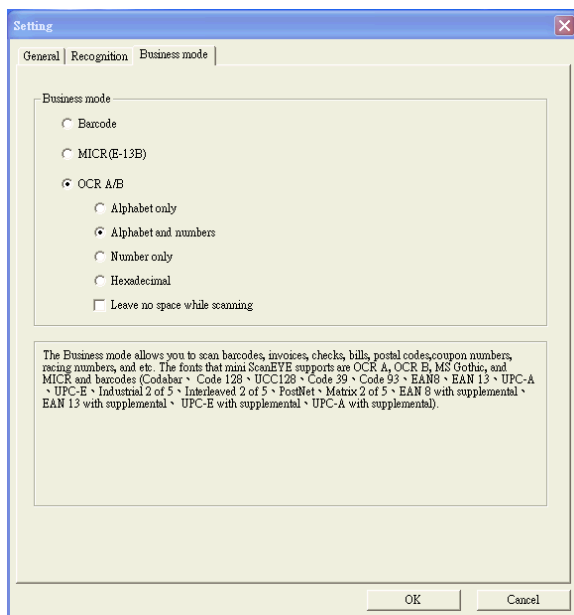
When choosing the English, French, German, Italian or Spanish as the language recognition, you can check the **[At the end of the scan, insert a space automatically]**. While scanning text, the system will automatically add a space at the end of the scan.




### 3.6.3 Business Mode

When using the business mode, you can accord with the scan content to choose the scan mode as below for higher recognition accuracy and the font the mode supports will show in the window.


- Barcode: Recognize barcodes.
- MICR (E-13B): Recognize MICR font Text.
- OCR A/B: Recognize OCR A/B font Text. (The options below are only for OCR A/B)
  - Alphabet only: Recognize from A to Z and from a to z.
  - Numbers only: Recognize from 0 to 9.
  - Alphabet & Numbers: Recognize from A to Z, from a to z and from 0 to 9.
  - Hexadecimal: Recognize from A to F, from a to f and from 0 to 9.
  - Leave no space while scanning: Without leaving any space while scanning.



## 3.7 Help

Selecting **[Help]** in the drop-down menu from the button  can find the user manual of mini ScanEYE.

## 3.8 About

Selecting **[About]** in the drop-down menu from the button  can see the information of mini ScanEYE, or you can go to Penpower Technology Ltd. official website for more information. If there is any problem or suggestion, please click **[Contact us]** and send an e-mail to us.




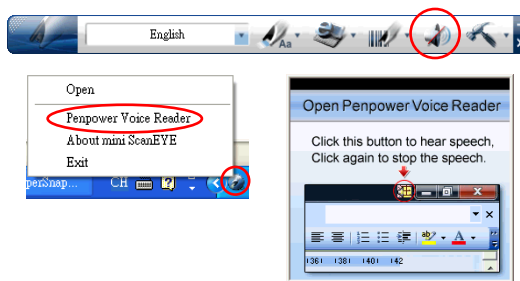



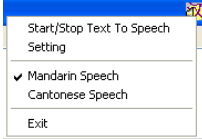
## Chapter 4 Penpower Voice Reader



Penpower Voice Reader utilizes a state of the art text-to-speech technology, it reads in fluent Mandarin or Cantonese of any articles. You can use it as a tool for fast proofreading or in teaching the correct Mandarin/Cantonese pronunciation.

### 4.1 Open Penpower Voice Reader

1. Click **[Voice Reader]**  button from the toolbar or **[Penpower VoiceReader]** from the tray icon menu to run Penpower Voice Reader.




2. When it starts up, there will be an icon on/off button  on the top right corner of your application, such as Word. You can click the icon to select **Mandarin Speech** or **Cantonese Speech**.
 

The image shows a context menu for the 'Start/Stop Text to Speech' icon. The menu options are: 'Start/Stop Text To Speech', 'Setting', 'Mandarin Speech' (checked with a checkmark), 'Cantonese Speech', and 'Exit'.
3. Choose a paragraph, click  and select **[Start/Stop Text to Speech]**, the selected paragraph will be read out. Check your speaker if there's no sound.
4. During reading, click , and selecting **[Start/Stop Text to Speech]**, it will stop reading.



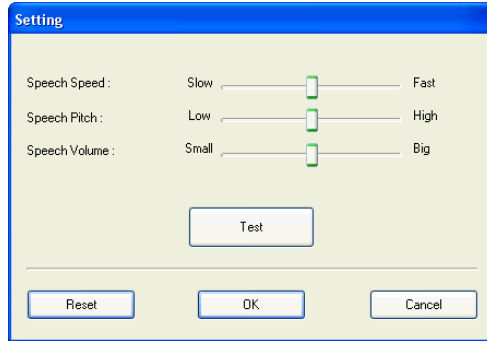
## 4.2 Voice Reader Setting

Click , select **[Setting]**, the **[Setting]** window will appear.



**Speech Speed:** Adjust speak speed.

**Speech Tone:** Adjust tone level.

**Speech Volume:** Adjust speak volume.



## 4.3 Turn off Penpower Voice Reader

1. Click , select **[Exit]** or click **[Voice Reader]**  button from the toolbar.
2. When you see the following image, the Penpower VoiceReader is turned off and the icon on the upper right corner disappears.



## Appendix: Recognition Languages

Abkhaz	Crimean Tatar
Adyghe	Croatian
Afrikaans	Crow
Agul	Czech
Albanian	Dakota (Sioux)
Altai	Danish
Armenian (Eastern)	Dargwa
Armenian (Grabar)	Dungan
Armenian (Western)	Dutch (Belgium)
Avar	Dutch (Netherlands)
Aymara	English
Azerbaijani (Cyrillic)	Eskimo (Cyrillic)
Azerbaijani (Latin)	Eskimo (Latin)
Bashkir	Estonian
Basque	Even
Belarusian	Evenki
Bemba	Esperanto
Blackfoot	Faroese
Breton	Fijian
Bugotu	Finnish
Bulgarian	French
Buryat	Frisian
Catalan	Friulian
Cebuano	Gagauz
Chamorro	Galician
Chechen	Ganda
Chinese (Simplified)	German
Chinese (Traditional)	German (Luxembourg)
Chukchee	German (new spelling)
Chuvash	Greek
Corsican	Guarani

Hani  
Hausa  
Hawaiian  
Hungarian  
Icelandic  
Ido  
Indonesian  
Ingush  
Interlingua  
Irish  
Italian  
Japanese  
Jingpo  
Kabardian  
Kalmyk  
Karachay-balkar  
Karakalpak  
Kasub  
Kawa  
Kazakh  
Khakass  
Khanty  
Kikuyu  
Kirghiz  
Kongo  
Korean  
Koryak  
Kpelle  
Kumyk  
Kurdish  
Lak  
Latin  
Latvian

Lezgi  
Lithuanian  
Luba  
Macedonian  
Malagasy  
Malay (Malaysian)  
Malinke  
Maltese  
Mansi  
Maori  
Mari  
Maya  
Miao  
Minangkabau  
Mohawk  
Moldavian  
Mongol  
Mordvin  
Nahuatl  
Nenets  
Nivkh  
Nogay  
Norwegian (Bokmal)  
Norwegian (Nynorsk)  
Nyanja  
Occidental  
Ojibway  
OldEnglish  
OldFrench  
OldGerman  
OldItalian  
OldSpanish  
Ossetian

Papiamentu	Tajik
Polish	Tatar
Portuguese (Brazil)	Tok Pisin
Portuguese (Portugal)	Tongan
Provençal	Tswana
Quechua	Tun
Rhaeto-Romanic	Turkish
Romanian	Turkmen
Romany	Tuvinian
Rundi	Udmurt
Russian	Uigur (Cyrillic)
Russian (Old Spelling)	Uigur (Latin)
Rwanda	Ukrainian
Sami (Lappish)	Uzbek (Cyrillic)
Samoan	Uzbek (Latin)
Scottish Gaelic	Welsh
Selkup	Wolof
Serbian (Cyrillic)	Xhosa
Serbian (Latin)	Yakut
Shona	Zapotec
Slovak	Zulu
Slovenian	Arabic numbers
Somali	Arabic-Indian numbers
Sorbian	Basic
Sotho	C/C++
Spanish	COBOL
Sunda	Fortran
Swahili	JAVA
Swazi	Pascal
Swedish	Simple chemical formulas
Tabasaran	
Tagalog	
Tahitian	

# **Penpower mini ScanEYE V3.5.0 EJK User Manual**

Penpower Technology Ltd.

Release: April, 2012