

# **WorldPenScan**

## **User Manual**

Release: September, 2010

Version: 2.0

Edition: 1

# **Penpower Technology Ltd.**

## **Software User License Agreement**

You are licensed to legally use this software program (“the Software”) by Penpower Technology Ltd (“Penpower”) under this license agreement (“The Agreement”). If you do not agree with any of the provisions in this Agreement, please do not install, copy or use the Software. By using the Software, you are deemed to fully understand and accept the provisions of this Agreement.

### **1. Intellectual Property**

All intellectual property rights in the Software, together with all information and documents included in the packaging for the Software (including but not limited to copy-rights), are property of Penpower, and are protected by relevant laws and regulations.

### **2. License to Use**

You are authorized to use the Software on one (1) single computer only. You may not use the Software on any other machines other than the said single computer.

### **3. Authority to Copy**

The Software and all documents included with the Software, and copyright thereof, are property of Penpower. You are licensed to make one (1) copy of the Software for your personal backup purposes. All other acts of copying are strictly prohibited.

You may not sell, lease, disassemble, reverse engineer, copy, translate, adapt or derive the Software, or obtain the source code of the Software by any other means. You may not use the Software for any purposes other than those permitted under this Agreement.

### **4. Business Users**

If you need to install or use the Software on more than one (1) computer, please contact Penpower or our local distributor to purchase a license for the additional use.

### **5. Liability**

You agree to indemnify Penpower against all losses, costs, debts, settlement payments or other expenses (including but not limited to attorneys fees) arising from your breach of this Agreement, and you agree to compensate Penpower for all of the abovementioned damages.

### **6. No Warranty**

Effectiveness of a packaged software in handling information is closely related to its software and hardware environment. The Software is published following careful development and product testing by Penpower, but Penpower is not able to conduct tests based on all possible combinations of software and hardware environment. Therefore, Penpower is unable to promise nor warrant that there will be absolutely no risk of loss or damage of information, or any other kind of loss, during installation and/or execution of the Software. You must be fully aware of your risks in using the Software.

Penpower will provide you with the Software and support services in respect of the Software to the maximum extent permitted by law. However, Penpower does not warrant that the Software and information included in the package of the Software contain no defects or errors. Penpower is not liable for any indirect, special or incidental loss arising from the Software, including but not limited to loss of profits, damage to business reputation, cessation of work, hardware malfunction or damage, or any other commercial damage or loss arising from commercial use of the Software.

#### **7. Limitation of Liability and Damages**

The maximum amount of compensation payable by Penpower, in respect of any damage incurred by you for any reason under this Agreement, is limited to the amount you have already paid to Penpower in respect of the Software.

Under no circumstances will Penpower be held liable for the possibility of loss, notwithstanding Penpower may be aware of the possibility of such loss.

#### **8. Prohibition Against Sublicense**

You are prohibited to assign the license in respect of the Software granted to you under this Agreement, or to grant a sublicense to another person.

#### **9. Jurisdiction**

With regards to any disputes arising from this Agreement, Penpower and you agree that the court having jurisdiction over the business location of Penpower will be the court in the first instance.

#### **10. Miscellaneous**

In the event that any provision of this Agreement is found to be invalid at law, such invalidity will not affect the validity of any other provisions, or the legal enforceability of such other provisions.

In the event that the Software cannot be executed under conditions of normal use, due to any damage to the original disk/s, Penpower will replace the disk/s free of charge.

# Contents

<b>Chapter 1 Product Introduction .....</b>	<b>1-1</b>
1.1 Introduction .....	1-1
1.2 Features .....	1-1
<b>Chapter 2 Getting Started.....</b>	<b>2-1</b>
2.1 System Requirements .....	2-1
2.2 Hardware Specification .....	2-1
2.2.1 WorldPenScan .....	2-1
2.2.2 WorldPenScan Pro.....	2-2
2.3 Software Installation.....	2-2
2.4 Driver Installation.....	2-5
<b>Chapter 3 Scanning and Settings.....</b>	<b>3-1</b>
3.1 Running Penpower WorldPenScan.....	3-1
3.2 WorldPenScan Toolbar .....	3-2
3.3 Scan Mode .....	3-4
3.3.1 Sentence Scan .....	3-4
3.3.2 Word Scan .....	3-4
3.3.3 Image Scan.....	3-5
3.3.4 Business Mode.....	3-5
3.4 Original Image.....	3-7
3.5 Online Translation .....	3-7
3.6 Settings .....	3-9
3.6.1 General Settings .....	3-9
3.6.2 Online Translation Settings.....	3-11
3.6.3 Interface Language Settings.....	3-11
3.6.4 Button Configuration Settings .....	3-12
3.6.4 Recognition Language Settings .....	3-12

There may be newer versions of the software that was released during or after this product's manufacturing date. If the content in the User Manual differs from the on-screen interface, please follow the instructions on the on-screen interface instead of the User Manual.

# Chapter 1 Product Introduction

## 1.1 Introduction

WorldPenScan, the handheld scan device with the highest accuracy rate on the market. The WorldPenScan is a perfect scan tool for students, journalists, business people and anyone who needs to get words, sentences and printed materials for immediate editing with no wait.

## 1.2 Features

### • The Best Scan and Translation Device

Connect to the computer through the USB port and is bundled with 3-in-1 functionality-scanning, recognition and translation.

### • Minimize Your Typing Efforts

The WorldPenScan can scan over 800 words per minute into your application software such as Words, Excel, Outlook, and text editors with high accuracy rate.

### • Recognize 193 Languages

The WorldPenScan can scan and recognize 193 languages, including English, French, German, Italian, Spanish, Japanese, Korean, Simplified Chinese, Traditional Chinese, and etc. For the detailed recognition language list, please refer to the appendix.

### • A good Language translation and Learning Tool

By scanning words or sentences directly to other language translation websites, you will find that WorldPenScan is a wonderful friend in translating and learning language aspects.

### • Ergonomic Design

The ergonomic and light design could fit all left and right-handed users and make you hold with comfort even long time scan.

### • Babylon Dictionary and Translation Software (WorldPenScan Pro Only)

WorldPenScan Pro co-works with Babylon, the world leading provider of quick online translation, and provides:

- more than 1400 dictionaries in more than 75 languages
- more than 800 language pairs to choose from
- simple one-click translation in any application
- web page and document translation (Word, PDF, Text)



- **Support Business Mode**

The business mode supports the recognition of barcodes and fonts such as OCR-A/B, and MICR fonts. With the business mode, you can scan and recognize barcodes and numbers or characters on invoices, checks, bills, coupons, and ect.

## Chapter 2 Getting Started

### 2.1 System Requirements

- Pentium II 300 CPU or above
- 256MB of RAM
- 250MB of available hard disk space
- Windows 7/Vista/XP OS
- CD-ROM Drive
- USB port

### 2.2 Hardware Specification

- Dimensions: 130mm x 37mm x 18.5mm
- Weight: 30g (excluding USB Adapter)
- Interface: USB 2.0
- Scanning speed: 15 cm/sec.
- Character size: 5~22 pt

#### 2.2.1 WorldPenScan







## 2.2.2 WorldPenScan Pro



### ***Function button:***

While scanning text or images, clicking the function button will function as the **[Enter]** key on the keyboard by default. In the **[Word Scan]** mode, the function key can be used to send the next word.

*Tip: You can refer Section 3.6.4 to configure the function button as Enter, Tab, Space, Click, or Double click.*

*Note: The hardware pictures in the manual are for reference. The color of the hardware may be different due to the version differences.*

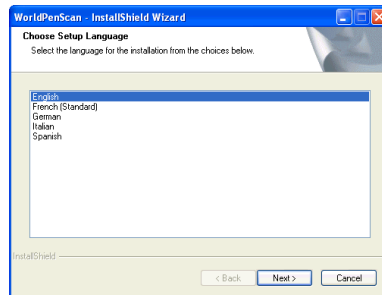
## 2.3 Software Installation

1. Insert the WorldPenScan setup CD into the CD-ROM drive. The installation program will start automatically. Click **[WorldPenScan]** to install WorldPenScan.



*Tip: WorldPenScan Pro provides you with the Babylon online translation service . Please insert the Babylon disk to install the application .*

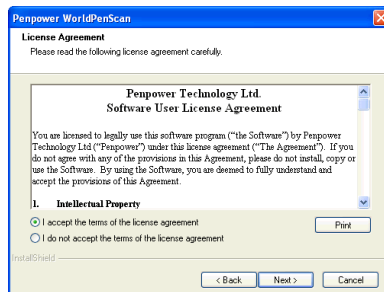
2. Please select an installation language and click **[Next]** to install.



3. Click **[Next]** to install.

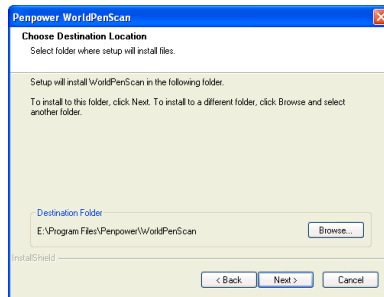


4. Please read the License Agreement, select **[I accept the terms of the license agreement]** and click **[Next]** to continue.

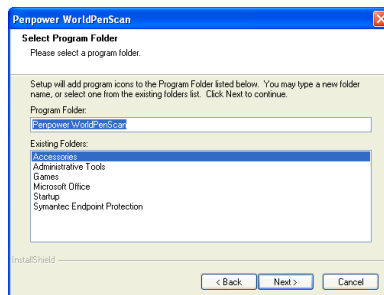




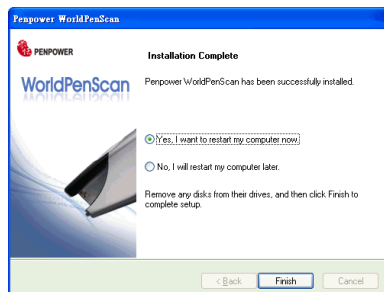
5. Select a destination folder to install the software to. Click **[Next]** to continue.



6. Choose the program folder that you want to install WorldPenScan to. If left as default, the software will create a new folder for you. Click **[Next]** to continue.



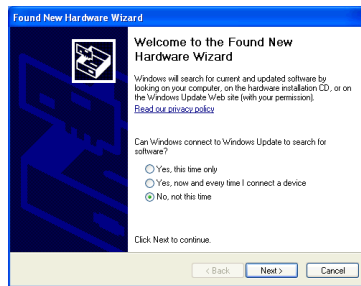
7. When the installation is finished, please restart your computer. Click **[Finish]** to restart your computer.



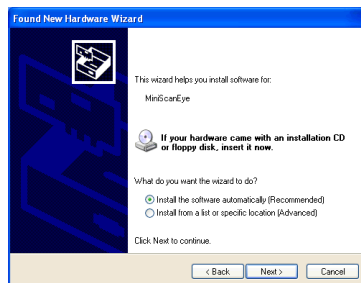
## 2.4 Driver Installation

1. Plug in the WorldPenScan pen into your computer's USB port and a window will appear. Select **[No, not this time]** and click **Next** to continue.

*Note: Some computers may shut down accidentally after connection. This is due to the lack of power to support several USB devices. To avoid this problem, connect your WorldPenScan and other USB devices to an extra-powered USB hub.*

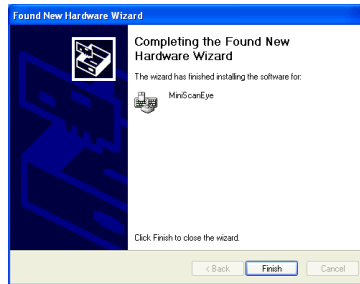


2. Select **[Install the software automatically]** and click **[Next]** to continue.






3. Click **[Finish]** to end the installation.



*Note: When connecting the scan pen to another USB port, follow these same steps to install again.*

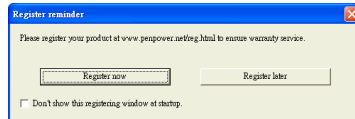
## Chapter 3 Scanning and Settings

### 3.1 Running Penpower WorldPenScan

Go to [Start/All Programs/Penpower WorldPenScan/Penpower WorldPenScan] or double-click the  shortcut on the desktop to start the **WorldPenScan** toolbar.

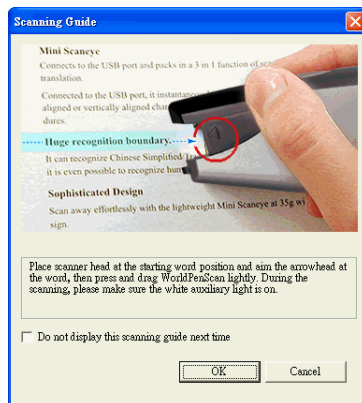
When running the **WorldPenScan** for the first time, a **Registration Reminder** will appear. Please click on **Register now** to register and receive the warranty service. You can also click **Register later** to close the reminder. When you need to register, click the **Tools** button and select **About** from the toolbar and then click on **Registration**.

*Tip: If you do not need to be reminded again, you can check [Don't show this registering window at startup].*



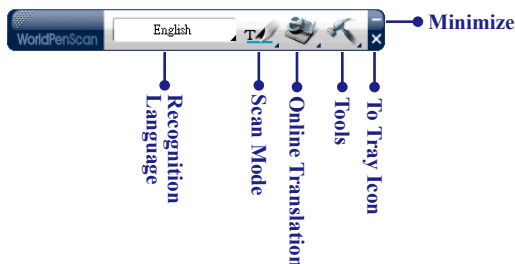
A **Scanning Guide** will appear after the registration reminder. Use the **WorldPenScan** as the guide directs.

*Note: If you would not like to read the message again, you can check [Do not display this scanning guide next time], and click [OK].*



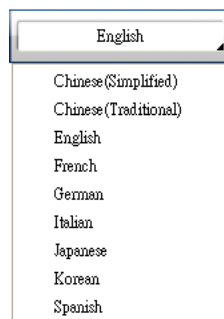


## 3.2 WorldPenScan Toolbar



1. **Recognition Language:** The **WorldPenScan** can recognize Simplified Chinese and Traditional Chinese, English, French, German, Italian, Japanese, and Korean text. Click to select the language you would like to scan.

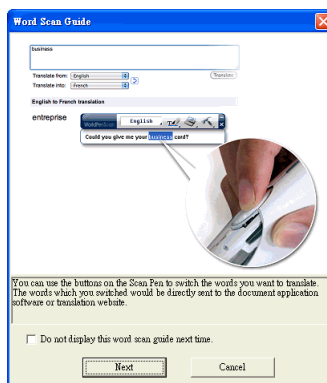
***Note:** The Recognition Language must match the language of the content for optimal accuracy.*








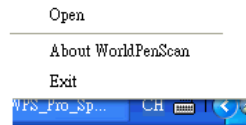
2. **Scan Mode:** Provide [Sentence Scan] and [Word Scan] modes.

- **Sentence Scan:** [Sentence Scan] mode is the default scan mode for scanning an article or a sentence directly. The scanned article or sentence will be recognized into text and sent to your computer. Please refer to 3.3.1 Sentence Scan for more detailed information.
- **Word Scan:** When you want to scan a word for checking the meaning or translation in Babylon or other online dictionary, you can click the [Scan Mode] button to select [Word Scan] mode, and scan a word or a sentence, and then select a word to check the meaning or translation. Please refer to 3.3.2 Word Scan for detailed information.

***Tip:** When first time switching to the Word Scan mode, the Word Scan Guide window will appear to guide you how to use the Word Scan mode.*



3. **Online Translation:** Provide a translation function in which you can assign a translation website or Babylon software to translate the scanned words. Please refer to 3.4 Online Translation for more detailed information.
4. **Tools:** Provide Image Scan, Original Image, Settings, Help and About.
  - . **Image Scan:** Select the **[Image Scan]** option, the scanned image or word will be sent to your computer in image format. Please refer to 3.3.3 Image Scan for more detailed information.
  - . **Original Image:** display the scanned image. See 3.4 Displaying Original Image.
  - . **Settings:** provide General, Translation Online settings. See 3.5 Settings for more detailed information.
5. **Minimize** : Click  to minimize the toolbar to Taskbar.
6. **Minimize to Tray Icon** : Click  minimize the toolbar into a tray icon. Double-click the tray icon on the bottom-right of the screen to open the toolbar. Double-click  to open the function menu.










## 3.3 Scan Mode

### 3.3.1 Sentence Scan


1. Select the **[Sentence Scan]**  mode from the **[Scan Mode]**.
2. Select the language of the text that you desire to scan from **[Recognition Language]**.
3. Open any word processor, for example Microsoft Word or WordPad, and then click the location where you desire to input.
4. Place a document on a flat surface and place the scan tip at the front of your desired scan area. Aim the scan tip arrow at the center of the desired scan area, and then press and drag the **WorldPenScan** pen in a straight line across the area like a highlighter. During the scanning, please make sure the white auxiliary light is on.
5. Stop applying pressure to the pen to stop scanning. The scanned text is displayed in your word processor immediately.

***Note:** Penpower WorldPenScan is able to scan and recognize one row of characters at a time. Please place the scan tip arrow at the center of the line.*

### 3.3.2 Word Scan

1. Select the language of the text that you desire to scan from the **[Recognition Language]**.
2. Click the **[Scan Mode]** button to select the **[Word Scan]**  mode, an extension window will appear under the toolbar.
3. Open any word processor, for example Microsoft Word or WordPad and click the location where you can input, or click the **[Online Translation]**  button to open Babylon or other dictionary, .
4. Place a document on a flat surface and place the scan tip in front of the word you desire to check. Aim the arrow at the center of the desired word, then press and drag the **WorldPenScan** pen in a straight line across the word. During the scanning, please make sure the white auxiliary light is on.
5. Stop applying pressure to the pen to stop scanning. The scanned word and meaning or translation is displayed in the Babylon or web dictionary.
6. If you scan more than one word, you can press the function button on the **WorldPenScan** pen to choose next recognizable word or use your mouse to highlight a word from the extension window, the selected word will be sent to the **cursor location**. So you can literally check the meaning or translation of your choice.

### 3.3.3 Image Scan

1. Click **[Tools]**  button and select the **[Image Scan]** option from the drop-down menu.
2. Open a word processor that is able to input images, for example Microsoft Word. Click the location where you would like to input display the scanned images.
3. Place the desired document on the a flat surface and place the scan tip at the starting word or picture. Aim the scan tip arrow at the center of the scan area, and then press and drag the scan pen in a straight line like a highlighter. The white auxiliary light from the scan tip indicates the pen is scanning.
4. Stop applying pressure to the pen to stop scanning. The scanned image is displayed in your word processor immediately.



### 3.3.4 Business Mode

The Business Mode allows you to scan barcodes, invoices, checks, bills, postal codes, coupon numbers and racing numbers etc.

*Note: Only WorldPenScan Pro provides the Business Mode function.*


The fonts that the Business Mode supports are OCR A, OCR B , and MICR fonts as the samples below:

- OCR A: 1 2 3 4 5 6 7 8 9 0
- OCR B: 0 1 2 3 A B C a b c
- MICR:


The barcodes that the Business Mode supports are Codabar, Code 128, Code 39, Code 93, EAN 8, EAN 13, IATA 2 of 5, Industrial 2 of 5, Interleaved 2 of 5, Matrix 2 of 5, Patch, PostNet, UCC-128, UPC-A and UPC-E.

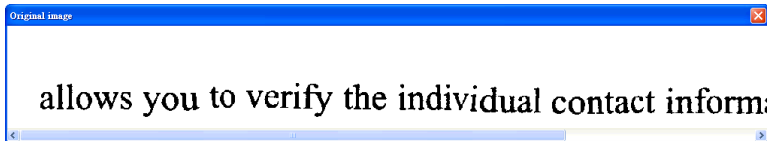


In order to have higher recognition accuracy, you may use the **[Business Mode]** to recognize these fonts. Please follow these steps.

1. Click **[Tools]**  button and select the **[Business Mode]** option from the drop-down menu.
2. Open your application or any word processor, for example Microsoft Word. Click the location where you would like to input the scanned text or numbers.
3. Place a document on a flat surface and place the scan tip at the front of your desired scan area. Aim the scan tip arrow at the center of the desired scan area, and then press and drag the **WorldPenScan** pen in a straight line across the area like a highlighter. During the scanning, please make sure the white auxiliary light is on.
4. Stop applying pressure to the pen to stop scanning. The scanned text or numbers are displayed in your application or word processor immediately.

### 3.4 Original Image


Click [**Tools**]  button and select the [**Original Image**] option from the drop-down menu to open the [**Original Image**] window. After scanning, the [**Original Image**] window displays the scanned image. You can check the scanned image to compare with the original text. This can help you improving your scan technique for more accurate recognition results.



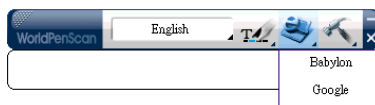
*Tip: You can right click on the original image to save the image to .bmp or .pcx file.*

### 3.5 Online Translation

**WorldPenScan** provides Online Translation function for you to translate words or sentences.


1. Select the [**Recognition Language**] which matches the scanning words.
2. Click [**Online Translation**]  and then select the [**Babylon**] or any other online translation Website.

*Note: Babylon option only appears in the WorldPenScan Pro version and when the Babylon online translation is installed.*



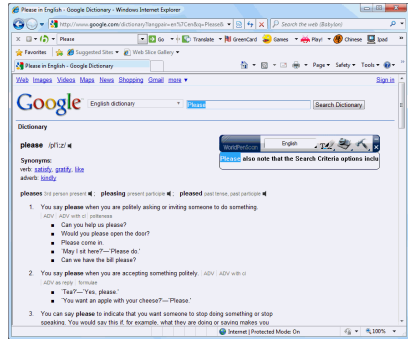
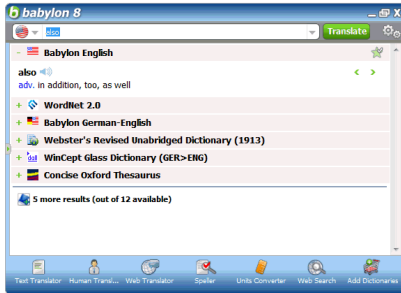
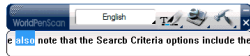
*Note: Please connect to internet before using the Online Translation function.*

*Tip: You can organize Website Links from the Translation Settings function. Please refer to 3.6.2 Online Translation Settings for more detailed information.*

3. **Babylon** software or online translation Website will be opened, and **WorldPenScan** will be switched to the [**Word Scan**]  mode automatically.
4. Place a document on a flat surface and place the scan tip at the starting word. Aim the scan tip arrow at the center of the desired area, the press and drag the scan pen in a straight line. The white auxiliary light from the Scan Tip indicates the pen is scanning.



5. The translation result of the first recognized word displays in the **Babylon** software or web browser.



*Note: If the Website does not support the enter function, please manually click the translate button on the website with your mouse.*


*Tip: Please refer to the Babylon help for operating the Babylon software.*

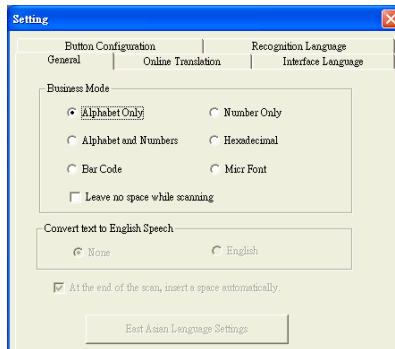
6. If you scan more than one word, you can press the **[Function button]** on the scan pen to see the translation of the next recognizable word. You can also use your mouse to highlight a word from the extension window, the selected word will be sent to the cursor location for translating.

*Note: If the Website does not support enter function, it also cannot support hardware button. Please scan next word instead.*

## 3.6 Settings

### 3.6.1 General Settings

Click **[Tools]**  button and select **[Settings]** from the drop-down menu. You can select the English Speech, At the end of the scan, add a space and East asian language settings.



### **Business Mode**

If your device is WorldPenScan Pro, you can set the recognition result of the Business Mode as Alphabet Only, Alphabet and Numbers, Bar Code, Number Only, Hexadecimal, Micr Font. Moreover, you can check **Leave no space while scanning** if you don't want spaces inserted while scanning.

### **Convert Text to English Speech**

When choosing English as the recognition language, you can choose to pronounce the recognized English word.

### **At the End of the Scan, insert a Space**

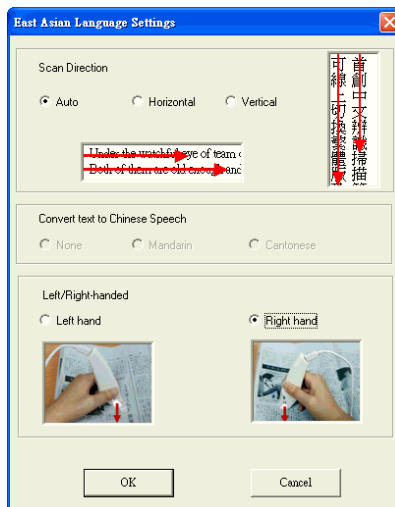
When choosing English, French, German, Italian or Spanish as the recognition language, you can check the **[At the end of the scan, insert a space]** check box. While scanning text, the system will automatically add a space at the end of the scan.

## East Asian Language Settings

When the current recognition language is an East Asian language, such as Traditional Chinese, Simplified Chinese, Japanese or Korean, you can click **[East Asian Language Settings]** button to select scan direction, Chinese speech and left/right-handed.

### Scan Direction

**WorldPenScan** must be used to scan the characters in consistent direction, any changes to the direction will cause inaccurate recognition results. According to the document you want to scan to choose horizontal or vertical direction manually.



### Scanning Horizontal Text

When scanning horizontal text, you can choose the **[Horizontal]** option. Place the pen on the text or image, move the pen left-to-right or right-to-left when scanning.



**Left hand:**  
Scan from right-to-left or from left-to-right



**Right hand:**  
Scan from left-to-right or from right-to-left

***Note:** Penpower WorldPenScan is able to scan and recognize one row of characters at a time. Please place the pen in such a manner so that the Scan Tip arrow is at the center of the line of text.*

### Scanning Vertically Aligned Text

When scanning vertically aligned text, you can choose **[Vertically]** and then select **[Left-hand]** or **[Right-hand]**. You may scan the text in a straight top-to-bottom fashion. Align the Scan Tip arrow on your pen to the center of the characters.



**Left Hand**




**Right Hand**

*Note: The Left/Right-handed option only available when you select the vertical direction.*

### Convert Text to Chinese Speech

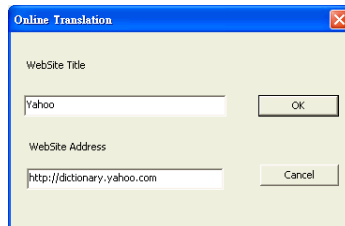
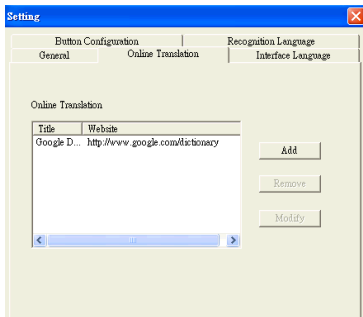
When scanning Chinese text, you can choose to pronounce the recognized word in Mandarin or Cantonese.

### 3.6.2 Online Translation Settings

**Translation Website Settings** lets you add, remove, and modify online translation websites. The websites will be shown in the **[Online Translation]**  button the toolbar.

*Note: Babylon only appears in the WorldPenScan Pro version and when the Babylon software is installed.*

Click the **[Add]** button to open the Translation Website Setup window. Input the translation website name and its URL address, then click **[OK]**. You can also modify or remove a website by clicking the **[Modify]** button or the **[Remove]** button.



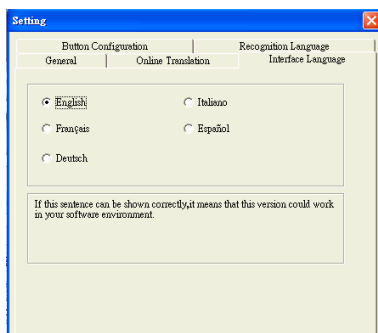




### 3.6.3 Interface Language Settings

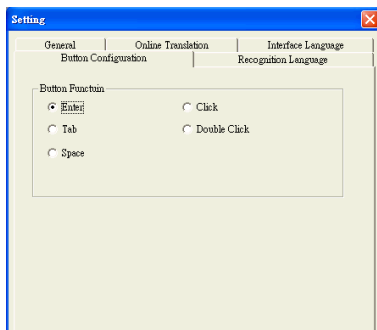
The **Interface Language Settings** option allows you to choose to display the interface in English, French, German, Italian or Spanish. After choosing a language, check the description area underneath.

If the description sentence does not display properly, which means your Windows OS does not support the given language display. Please choose another language.



### 3.6.4 Button Configuration Settings

The default function of Function Button is Enter. You can replace Enter by Tab, Space, Click, or Double Click. Select the Button Configuration tab and then you can select which function you want the Function Button to be.

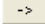



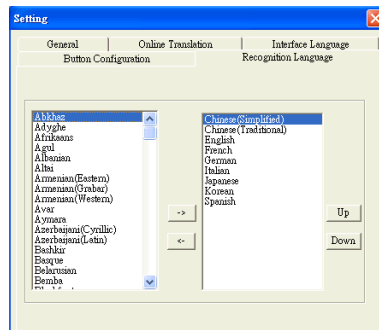
### 3.6.4 Recognition Language Settings

WorldPenScan provides 193 recognition languages for you to choose. In the toolbar, you can drag down the recognition menu to select the recognition language you want.



You can modify the recognition language menu in the Recognition Language tab of Setting. In the Recognition Language Tab, the left column contains 193 recognition languages for you to choose. The languages appear in the right column will all appear on the recognition language drag down menu on the tool bar.

In this tab, you can select the recognition language in the left column and click the  button to add it into the right column. If you want to remove a language from the right column, you can select the language you want to remove and click the  button to remove it from the right column.



**Tip:** Select a language in the right column and click  or , you can change this language's order.

## **Appendix: Recognition Languages**

**Abkhaz**

**Adyghe**

**Afrikaan**

**Agul**

**AlbanianAltai**

**Armenian (Eastern)**

**Armenian (Grabar)**

**Armenian (Western)**

**Avar**

**Aymara**

**Azerbaijani (Cyrillic)**

**Azerbaijani (Latin)**

**Bashkir**

**Basq**

**Belarusian**

**Bemba**

**Blackfoot**

**Breton**

**Bugotu**

**Bulgarian**

**Buryat**

**Catalan**

**Cebuano**

**Chamorro**

**Chechen**

**Chinese (Simplified)**

**Chinese (Traditional)**

**Chukchee**

**Chuvash**

**Corsican**

**Crimean Tatar**

**Croatian**  
**Crow**  
**Czech**  
**Dakota (Sioux)**  
**Danish**  
**Dargwa**  
**Dungan**  
**Dutch (Belgium)**  
**Dutch (Netherlands)**  
**English**  
**Eskimo (Cyrillic)**  
**Eskimo (Latin)**  
**Estonian**  
**Even**  
**Evenki**  
**Faroese**  
**Fijian**  
**Finnish**  
**French**  
**Frisian**  
**Friulian**  
**Gagauz**  
**Galician**  
**Ganda**  
**German**  
**German (Luxembourg)**  
**German (new spelling)**  
**Greek**  
**Guarani**  
**Hani**  
**Hausa**  
**Hawaiian**  
**Hungarian**

**Icelandic**  
**Indonesian**  
**Ingush**  
**Irish**  
**Italian**  
**Japanese**  
**Jingpo**  
**Kabardian**  
**Kalmyk**  
**Karachay-balkar**  
**Karakalpak**  
**Kasub**  
**Kawa**  
**Kazakh**  
**Khakass**  
**Khanty**  
**Kikuyu**  
**Kirghiz**  
**Kongo**  
**Korean**  
**Koryak**  
**Kpelle**  
**Kumyk**  
**Kurdish**  
**Lak**  
**Latin**  
**Latvian**  
**Lezgi**  
**Lithuanian**  
**Luba**  
**Macedonian**  
**Malagasy**  
**Malay (Malaysian)**

**MalinkeMaltese**  
**Mansi**  
**Maori**  
**Mari**  
**Maya**  
**Miao**  
**Minangkabau**  
**Mohawk**  
**Moldavian**  
**Mongol**  
**Mordvin**  
**Nahuatl**  
**Nenets**  
**Nivkh**  
**Nogay**  
**Norwegian (Bokmal)**  
**Norwegian (Nynorsk)**  
**Nyanja**  
**Ojibway**  
**OldEnglish**  
**OldFrench**  
**OldGerman**  
**OldItalian**  
**OldSpanish**  
**Ossetian**  
**Papiamento**  
**Polish**  
**Portuguese (Brazil)**  
**Portuguese (Portugal)**  
**Provencal**  
**Quechua**  
**Rhaeto-Romanic**

**Romanian**  
**Romany**  
**Rundi**  
**Russian**  
**Russian (Old Spelling)**  
**Rwanda**  
**Sami (Lappish)**  
**Samoan**  
**Scottish Gaelic**  
**Selkup**  
**Serbian (Cyrillic)**  
**Serbian (Latin)**  
**Shona**  
**Slovak**  
**Slovenian**  
**Somali**  
**Sorbian**  
**Sotho**  
**Spanish**  
**Sunda**  
**Swahili**  
**Swedish****Tabasaran**  
**Tagalog**  
**Tahitian**  
**Tajik**  
**Tatar**  
**Thai**  
**Tok Pisin**  
**Tongan**  
**Tswana**  
**Tun**  
**Turkish****Turkmen**  
**Tuvinian**

**Udmurt**

**Uigur (Cyrillic)**

**Uigur (Latin)**

**UkrainianUzbek (Cyrillic)**

**Uzbek (Latin)**

**Vietnamese**

**Welsh**

**Wolof**

**XhosaYakut**

**Zapotec**

**Zulu**

**Esperanto**

**Ido**

**Interlingua**

**Occidental**

**Arabic numbers**

**Arabic-Indian numbers**

**Basic**

**C/C++**

**COBOL**

**Fortran**

**JAVA**

**Pascal**

**Simple chemical formulas**



# **Penpower WorldPenScan V2.0 User Manual**

Penpower Technology Ltd.

Release: September, 2010

Edition: 1