

WorldPenScan

User Manual

Version: V3.1

Release: October, 2009

Penpower Technology Ltd.

Software User License Agreement

You are licensed to legally use this software program (“the Software”) by Penpower Technology Ltd (“Penpower”) under this license agreement (“The Agreement”). If you do not agree with any of the provisions in this Agreement, please do not install, copy or use the Software. By using the Software, you are deemed to fully understand and accept the provisions of this Agreement.

1. Intellectual Property

All intellectual property rights in the Software, together with all information and documents included in the packaging for the Software (including but not limited to copy-rights), are property of Penpower, and are protected by relevant laws and regulations.

2. License to Use

You are authorized to use the Software on one (1) single computer only. You may not use the Software on any other machines other than the said single computer.

3. Authority to Copy

The Software and all documents included with the Software, and copyright thereof, are property of Penpower. You are licensed to make one (1) copy of the Software for your personal backup purposes. All other acts of copying are strictly prohibited.

You may not sell, lease, disassemble, reverse engineer, copy, translate, adapt or derive the Software, or obtain the source code of the Software by any other means. You may not use the Software for any purposes other than those permitted under this Agreement.

4. Business Users

If you need to install or use the Software on more than one (1) computer, please contact Penpower or our local distributor to purchase a license for the additional use.

5. Liability

You agree to indemnify Penpower against all losses, costs, debts, settlement payments or other expenses (including but not limited to attorneys fees) arising from your breach of this Agreement, and you agree to compensate Penpower for all of the abovementioned damages.

6. No Warranty

Effectiveness of a packaged software in handling information is closely related to its software and hardware environment. The Software is published following careful development and product testing by Penpower, but Penpower is not able to conduct tests based on all possible combinations of software and hardware environment. Therefore, Penpower is unable to promise nor warrant that there will be absolutely no risk of loss or damage of information, or any other kind of loss, during installation and/or execution of the Software. You must be fully aware of your risks in using the Software.

Penpower will provide you with the Software and support services in respect of the Software to the maximum extent permitted by law. However, Penpower does not warrant that the Software and information included in the package of the Software contain no defects or errors. Penpower is not liable for any indirect, special or incidental loss arising from the Software, including but not limited to loss of profits, damage to business reputation, cessation of work, hardware malfunction or damage, or any other commercial damage or loss arising from commercial use of the Software.

7. Limitation of Liability and Damages

The maximum amount of compensation payable by Penpower, in respect of any damage incurred by you for any reason under this Agreement, is limited to the amount you have already paid to Penpower in respect of the Software.

Under no circumstances will Penpower be held liable for the possibility of loss, notwithstanding Penpower may be aware of the possibility of such loss.

8. Prohibition Against Sublicense

You are prohibited to assign the license in respect of the Software granted to you under this Agreement, or to grant a sublicense to another person.

9. Jurisdiction

With regards to any disputes arising from this Agreement, Penpower and you agree that the court having jurisdiction over the business location of Penpower will be the court in the first instance.

10. Miscellaneous

In the event that any provision of this Agreement is found to be invalid at law, such invalidity will not affect the validity of any other provisions, or the legal enforceability of such other provisions.

In the event that the Software cannot be executed under conditions of normal use, due to any damage to the original disk/s, Penpower will replace the disk/s free of charge.

Contents

| | |
|--|------------|
| Chapter 1 Product Features | 1-1 |
| 1.1 Introduction | 1-1 |
| 1.2 Features | 1-1 |
| Chapter 2 Installation | 2-1 |
| 2.1 System Requirements | 2-1 |
| 2.2 Hardware Specification | 2-1 |
| 2.3 Software Installation | 2-2 |
| 2.4 Hardware Installation | 2-4 |
| Chapter 3 Scanning and Settings | 3-1 |
| 3.1 Running Penpower WorldPenScan | 3-1 |
| 3.1.1 Toolbar | 3-1 |
| 3.2 Scanning To The Computer | 3-3 |
| 3.2.1 Scanning & Recognizing | 3-3 |
| 3.2.2 Sending Images | 3-3 |
| 3.3 Settings | 3-4 |
| 3.3.1 Language Settings | 3-4 |
| 3.3.2 Scan Direction | 3-5 |
| 3.3.3 Speech | 3-7 |
| 3.3.4 Scanning Horizontal or Vertically Aligned Text | 3-8 |
| 3.3.5 Property Settings | 3-8 |
| 3.3.6 Translation Website Set Up | 3-9 |
| 3.3.7 Interface Language Settings | 3-9 |
| 3.4 Using Balloon UI | 3-10 |
| 3.4.1 Correct a Certain Character | 3-10 |
| 3.4.2 Original Image | 3-14 |
| 3.4.3 Punctuation | 3-14 |
| 3.4.4 Translation | 3-14 |
| 3.5 Displaying Original Image | 3-15 |
| 3.6 Online Translation | 3-16 |
| Chapter 4 Penpower Voice Reader | 4-1 |
| 4.1 Open Penpower Voice Reader | 4-1 |
| 4.2 VoiceReader Setting | 4-2 |
| 4.3 Turn off Penpower VoiceReader | 4-2 |

| | |
|--|------------|
| Chapter 5 Penpower Translator | 5-1 |
| 5.1 Open Penpower Translator | 5-1 |
| 5.2 English Character Dictionary Lookup..... | 5-1 |
| 5.3 Chinese Character Dictionary | 5-3 |
| 5.4 English Phrasal Dictionary | 5-4 |
| 5.5 Chinese Phrasal Dictionary | 5-5 |
| 5.6 Translating Scanned Input | 5-6 |

There may be newer versions of the software that was released during or after this product's manufacturing date. If the content in the User Manual differs from the on-screen interface, please follow the instructions on the on-screen interface instead of the User Manual.

Chapter 1 Product Features

1.1 Introduction

WorldPenScan, the best input device, scans and recognizes Chinese, English, Japanese, Korean, French, German, Italian and Spanish into your computer via the USB interface. Whenever you come across any particular words or sentences that you do not understand, WorldPenScan will scan for you. With an ergonomic design, WorldPenScan provides a comfortable handle which fits all left and right-handed users. Scan away effortlessly with the transparent scan tip. Where you see, where you scan.

1.2 Features

- **A brand new ergonomic design**

Provide a comfortable handle which fits all left and right-handed users. Scan away effortlessly with its transparent scan tip. Where you see, where you scan. The stand alone USB cable can prevent cable damage and connection problems.

- **The best input device**

Unlike the complicated process of the traditional scanner, WorldPenScan provides the easiest way for inputting words. Multi-thread architecture allows you to scan continuously without pause while recognition is being done on the fly.

- **Multiple language recognition system**

The adjustable multiple language recognition system provides Traditional Chinese, Simplified Chinese, Hong Kong characters, English, Japanese, Korean, French, German, Italian and Spanish recognition languages.

- **Automatic Tilt Calibration**

Auto-detect and calibrate the tilt angle of the scanned pictures to improve the recognition accuracy.

- **Balloon Interface**

Balloon interface offers you a non-interference environment. All scan results will directly transfer to the desired application. Balloon interface pops up and provides online translator, pronunciation, candidate words and related words whenever you need.



- **Penpower VoiceReader**

Penpower VoiceReader utilizes a state of the art text-to-speech technology, it reads in fluent Mandarin or Cantonese of any articles. You can use it as a tool for fast proofreading or in teaching the correct Mandarin/Cantonese pronunciation.

- **Bidirectional Chinese to English document translation**

Come with translation software, Transtar, which can translate phrases or characters from English to Chinese or vice versa and have your complete Chinese document translated into English right away, with a read back function which reads out your document to you aloud.

- **Online Translation**

The manageable online translation menu is attached on the toolbar. You can set up the translation website for translating instantly.

- **Scan Image**

The new feature of scanning images lets you scan and save the important images into MS Word files.

Chapter 2 Installation

2.1 System Requirements

- Pentium II 300 CPU or above
- 256MB of RAM
- 250MB of available hard disk space
- Windows 7/Vista /XP OS
- USB port

2.2 Hardware Specification

- Dimensions: 130mm x 37mm x 18.5mm
- Weight: 30g (excluding USB Adapter)
- Interface: USB 2.0
- Scanning speed: 15 cm/sec.
- Character size: 5~22 pt



Function button:

While scanning text, clicking the function button will function as the “**Enter**” key on the keyboard. The function key during the **Penpower Translator** will translate the next word in the scanned sequence.



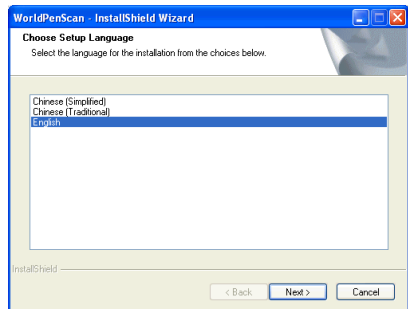
2.3 Software Installation

1. Insert the WorldPenScan setup CD into the CD-ROM drive. The installation program will start automatically. Click **WorldPenScan** on the Installation window to install WorldPenScan.

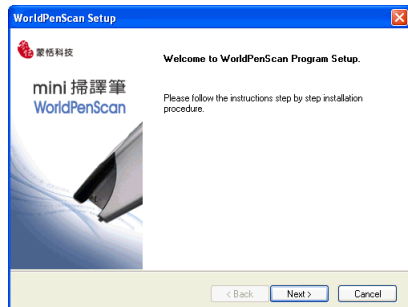


Tip: WorldPenScan includes TranStar dictionary and Penpower OCR optical character recognition software. You can install them from Installation window.

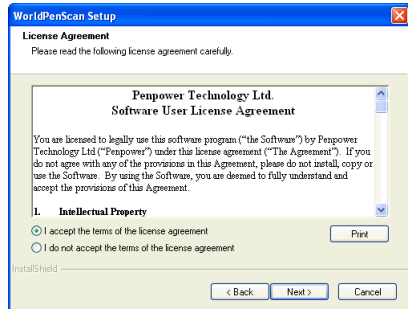
2. Please select an installation language and click **Next** to install.



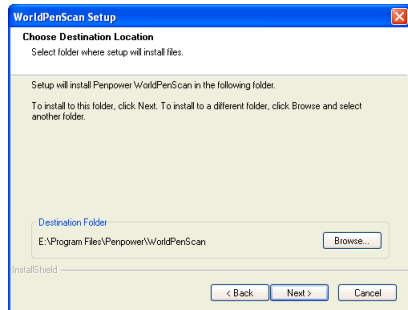
3. Click **Next** to install.



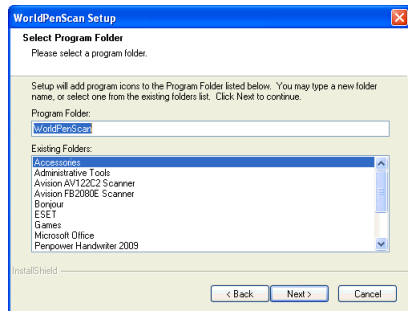
4. Please read the License Agreement, select **I accept the terms of the license agreement** and click **Next** to continue.



5. Select a destination folder to install the software to. Click **Next** to continue.



6. Choose the program folder that you want to install the software to. If left as default, the software will create a new folder for you. Click **Next** to continue.





7. Your computer must restart for the WorldPenScan software to function. Select one of the options and then click **Finish** to restart your computer or to continue using your computer.



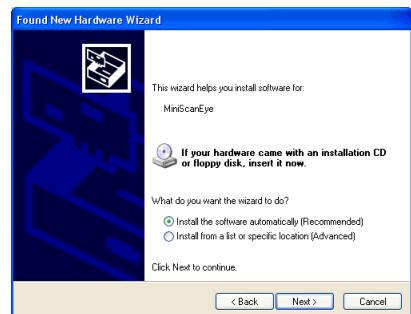
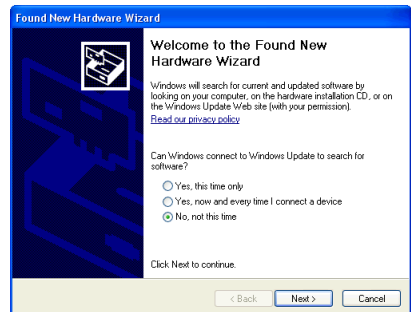
Note: When installing WorldPenScan in the Vista OS, the system may show that Windows can't verify the publisher of this driver software two times. Please choose Install this driver software anyway.

2.4 Hardware Installation

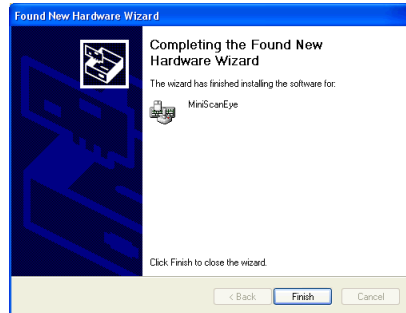
1. Plug in the WorldPenScan pen into your computer's USB port and a window may appear. Select [**No, not this time**] and click **Next** to continue.

Note: Some computers may shut down accidentally after connection. This is due to lack of power to support several USB devices. To avoid this problem, connect your WorldPenScan and other USB devices to an extra-powered USB hub.

2. Select [**Install the software automatically**] and click **Next** to continue.



3. Click **Finish** to end the installation.

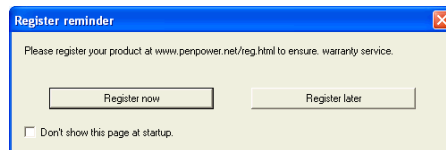


Note: When connecting the WorldPenScan pen to another USB port, follow these same steps to install again.

2.5 Registration

Go to [Start/All Programs/Penpower WorldPenScan/Penpower WorldPenScan] or double click the  shortcut on the desktop to start the WorldPenScan toolbar.

When you first time run the WorldPenScan, a registration reminder will appear. Please click on **Register now** to register and ensure the warranty service. You can also click **Register later** to close the reminder. When you need to register, click on the **About** button from the toolbar and then click on **Registration**.



Tip: If you do not need to be reminded again, you can check [Don't show this page at startup].

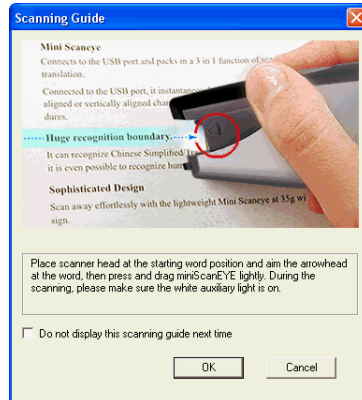


Chapter 3 Scanning and Settings

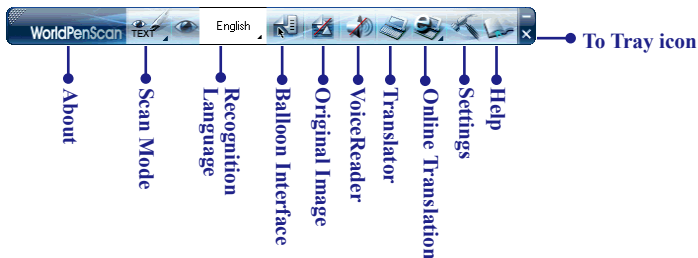
3.1 Running Penpower WorldPenScan


Go to [Start/All Programs/Penpower WorldPenScan/Penpower WorldPenScan] or double click the  shortcut on the desktop to start the WorldPenScan toolbar.

Note: When running the WorldPenScan, the Scanning Guide will appear. Please use the WorldPenScan according to the Scanning Guide. If you would not like to read the message again, you can check off [Do not display this Scanning Guide next time].



3.1.1 Toolbar







1. **Scan Mode:** Provide [Scan & Recognize] and [Send Image], click  to select scan mode. If you select **Scan & Recognize** mode, it will scan and recognize text to your computer. If you select **Send Image** mode, it will send the scanned image to your computer.



Note: When you use the [Send Image] mode, you need to have an image-supporting software running i.e. Microsoft Word




2. **Recognition Language:** WorldPenScan can recognize English, French, German, Italian, Spanish, Korean, Japanese, and Simplified/Traditional Chinese text. Click  to select the language of the text you would like to scan.
3. **Balloon UI:** provides candidates, phrase correction, split character, merge characters, original image, punctuation, previous characters, related characters and translation. See 3.4 Using Balloon UI.
4. **Original Image:** display the scanned image. See 3.5 Displaying Original Image.
5. **Voice Reader:** read aloud Chinese articles in Mandarin or Cantonese. See Chapter 4 Penpower Voice Reader.
6. **Translator:** open Penpower Translator to translate Chinese-English/English-Chinese words and articles. See Chapter 5 Penpower Translator.
7. **Online Translation:** provide a translation function in which you can assign a translation website to translate scanned words. Please refer to 3.6 Online Translation for more detailed information.
8. **Settings:** provide Recognition Setting, General, Property, Translation Website Set up and Interface Language settings. See 3.3 Settings for more detailed information.
9. **Minimize:** click  to minimize the toolbar to Taskbar.
10. Click  to minimize the toolbar into a tray icon. Double-click the tray icon on the bottom-right of the screen to open the toolbar. Right-click  to open the function menu.



3.2 Scanning To The Computer


3.2.1 Scanning & Recognizing

1. Select [Scan & Recognize] from [Scan Mode] .
2. Select the language of the text that you would like to scan from [Recognition Language].
3. Open any word processor (i.e Microsoft Word or Wordpad) and click the location where you would like the WorldPenScan to start.
4. Place a document on a flat surface and place the scanner tip at the start of your desired scan area. Aim the arrow at the desired area, then press and drag the WorldPenScan pen in a straight line across the area. During the scanning, please make sure the white auxiliary light is on. Stop applying pressure to the pen to stop scanning. The scanned text will display in your word processor.

Note: Penpower WorldPenScan is able to scan and recognize one row of characters at a time. Place the pen so the Scan Tip arrow points at the center of the line.

蒙恬全屏幕手写精灵

3.2.2 Sending Images


1. Select [Send Image] from [Scan Mode] .
2. Open a word processor that is able to display images (i.e Microsoft Word) and click the location that you would like to display the scanned images.
3. Place a document on the table and place the scanner head at the starting word or picture and aim the Scan Tip arrow at the center of the scan area, then press and drag the WorldPenScan pen in a straight line. The white auxiliary light from the Scan Tip indicates the pen is scanning. The scanned picture will display on your word processor in an image format.





3.3 Settings

3.3.1 Language Settings

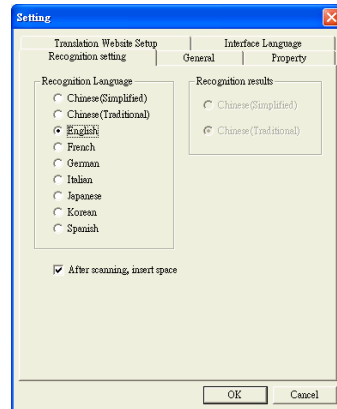
Besides selecting recognition language from the toolbar, you can also click **[Settings]**  from the toolbar to select recognition language and recognition results. Different settings will get different recognition results.

* Recognition Language

Change the **[Recognition Language]** to the language of the desired scan text.

* Recognition Results

If you select **[Traditional Chinese]** or **[Simplified Chinese]**, you can select which language you would like the WorldPenScan to type out. No matter whether the text is Simplified or Traditional in, the WorldPenScan will type out the characters in the selected language.



Tip: WorldPenScan can actually convert Traditional text on your document to a Simplified Chinese oriented result vice versa, in which you can select a different combination.

* Recognizing HK Character

If you select **[Traditional Chinese]** recognition language, you can check **[Recognize HK Character]** option to recognize Hongkong characters option. Connect to the <http://www.microsoft.com/hk/hkscs/default.aspx> to check the Hong Kong characters list.

* After Scanning Insert Space

If you select the English recognition language, you can select the **[After Scanning Insert Space]** box. While scanning English text, the system will automatically add a space at the end of the scan.

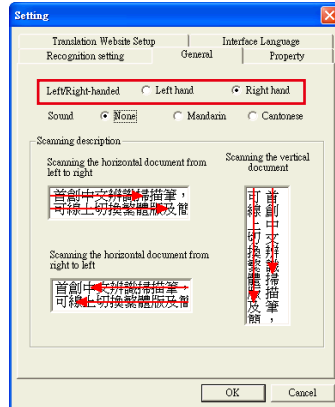
3.3.2 Scan Direction

In the [General Setting] page, you can select the appropriate Scan Mode and configure the pen to suit left or right-handed holders.

* Scan Direction Settings

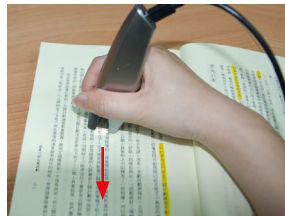
WorldPenScan must be used to scan the characters in a consistent direction, any changes to the direction will cause inaccurate recognition results.

According to how you hold the pen and the direction which you want to scan to change the configuration settings.



* Scanning Vertically Aligned Text

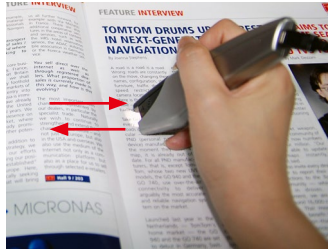
When scanning vertically aligned text, please scan the text in a straight top-to-bottom fashion. Align the Scan Tip arrow on your pen to the center of the characters.





*** Scanning Horizontal Text**

When scanning horizontal text, first choose the left-hand or right-hand option. Then place the pen on the text, move the pen left-to-right or right-to-left depending on the set option to scan.



Right hand: Scan from left-to-right or from right-to-left



Left hand: Scan from right-to-left or from left-to-right

Note: Penpower WorldPenScan is able to scan and recognize one row of characters at a time. Please place the pen in such a manner so that the Scan Tip arrow is at the center of the line of text.

*** Practice**

According to what has been discussed previously, please scan the illustrated text below, in a horizontal and vertical fashion. Do not introduce abrupt changes when scanning, i.e the speed of moving your pen or scanning too fast.

If you have successfully scanned the text with the correct recognition results, you are now ready to put WorldPenScan to actual use!

蒙恬扫译笔中文辨识扫描翻译

蒙恬扫译笔中文辨识扫描翻译

3.3.3 Speech

The WorldPenScan program has English, Mandarin and Cantonese text-to-speech capabilities. When selecting **Traditional Chinese** or **Simplified Chinese** as the **Recognition Language**, the WorldPenScan will be able to convert the text into **Mandarin** and **Cantonese** speech. When **English** is selected, the WorldPenScan uses **English** speech.

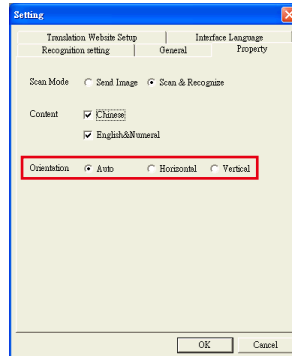


3.3.4 Scanning Horizontal or Vertically Aligned Text

When you first use the WorldPenScan, the default setting is automatically detects the direction of the text. However, you can manually set the scanner to scan in a direction of your choice. If left in its default settings, the scanning speed of the WorldPenScan will be slower until the WorldPenScan detects the appropriate text direction.

If you already know that all your text all read in a certain direction, you can set the WorldPenScan to scan in that direction using the interface.

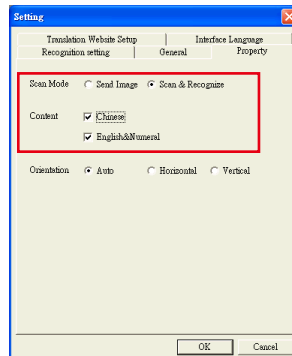
To do this, click the **Property** tab and choose your desired text direction under **Orientation**.



3.3.5 Property Settings

In the **Property Settings** page, you can select **Scan Mode**, **Content** or **Orientation**. Select **Scan & Recognize**, it will scan and display text on your computer. If you select **Send Image**, it will display the scanned image to your computer.

Select **Content** to change settings appropriate for the type of text being scanned. The software supports Chinese, Japanese, Korean, English or Numbers. Select the appropriate conditions for higher accuracy.



Tip: When scanning handwritten text, the scanning results may vary according to the handwriting. The optimal recognition accuracy can be achieved when the text is properly aligned and when the text size is within the scanning range of the pen tip.

Note: The Recognition Language must match the language of the content for optimal accuracy.

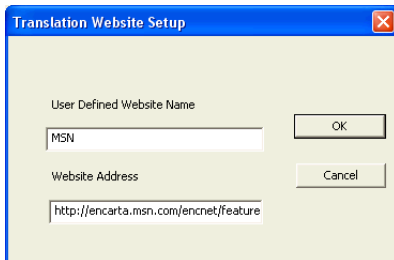
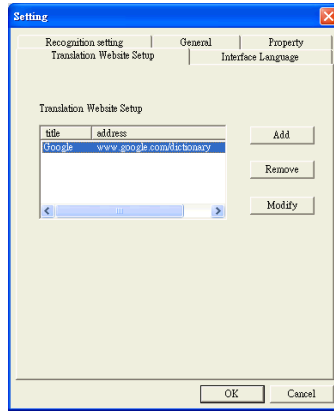
Note: The Content setting accords with the Recognition Language setting to display the supported settings.

3.3.6 Translation Website Set Up

Translation Website Settings lets you add, remove, and modify online translation websites. The websites will be shown in the Translation button on the toolbar.

Click the **Add** button to open the Translation Website Setup window. Input the translation website name and its URL address, then click **OK**. You can also modify or remove a website by clicking the **Modify** button or the **Remove** button.

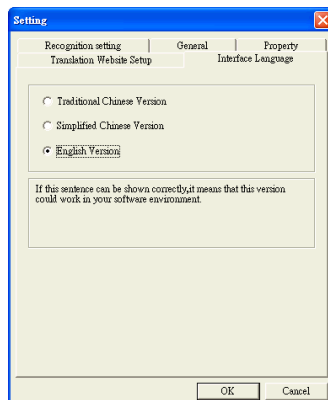
You will find the new Translation Website when clicking Online Translation button from the toolbar. Click it to open the Website.



3.3.7 Interface Language Settings

The Interface Language Settings option allows you to choose to display the interface in Traditional Chinese, Simplified Chinese or English for user interface language. After choosing a language, check the description area underneath.

If the description sentence does not display properly, your Windows OS does not support the given language display. Choose another language.



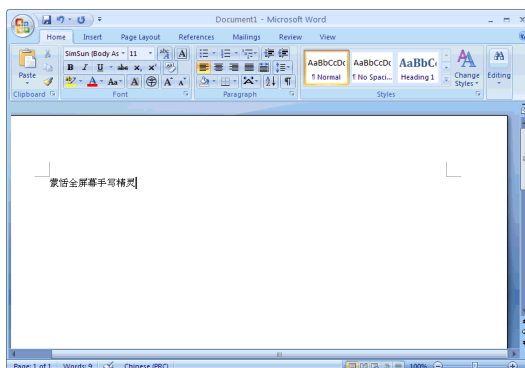


3.4 Using Balloon UI

If you select Traditional Chinese or Simplified Chinese as your recognition language, you can select the **[Open Balloon Interface]** for the following functions: correct a certain character, pre-emptive linking, character combination, character split, phrase correction, display original image, punctuation, and online translation.






When using Balloon UI, all scanning results will be directly transferred to the desired application. For example, scan “蒙恬全屏幕手写精灵” into MS Word continuously.



3.4.1 Correct a Certain Character

When you want to correct a certain character, all you need to do is to place your cursor over the scanned Chinese character for 1-2 seconds and a window showing a list of suggested corrections will be presented to you. This will enable you quicker correction and a faster way of inputting characters into your desired application.

Tip: You only need to place your cursor over the scanned Chinese character for 1-2 seconds, you do not need to click any buttons.

When the pop up window appear, you will have a list of suggested corrections, character combination buttons  or  hover your cursor over the display original text button .



* Candidates

If you find an incorrect character in your result box, you can use the candidate function to replace with the correct character.


1. As per the illustration, the character has been recognized incorrectly.
2. Leave your cursor on the character for 1-2 seconds and a window showing a list of suggested corrections will be presented.
3. If the correct character appears among the list of characters presented, you can click on the character to have your current incorrect character replaced.
5. Lastly, notice that the wrong character has been replaced.



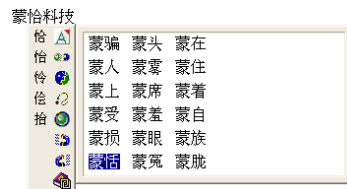
* Previous Characters and Related Characters


In any continuous text (2 characters), the first character is the second character's uplink, while the second character is the first character's downlink. For example 科技, where 科 is 技's uplink, while the character 技 is 科's downlink.

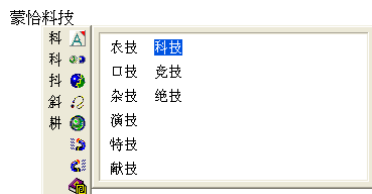
1. When using the WorldPenScan, the recognition results will be directly transferred to the desired application.
2. As shown in the illustration, the character 恬 has been recognized incorrectly as 恰 as well as 科 which also has been incorrectly recognized as 料.

3. Leave your cursor on the character 恰 for 1-2 seconds and a window will pop up listing possible characters. In the pop up window, click on the magnet which is facing left  and you will notice another pop up window which shows you a list of combination which the system thinks are possible replacements for the resulting recognition.

蒙恰科技



4. Leave your cursor on the character 料 for 1-2 seconds, which will once again invoke the pop up window with the list of possible replacements. This time round, click on the magnet which is facing right  and the very same panel will pop up again with a list of combination of characters for you to choose from.



5. After the correct combination, the correct resulting text will now appear in the result box.


蒙恬科技

Note: Only Chinese recognition language provides combination list.

* Split Character

On the contrary, when the strokes in 2 characters are too close to each other, they may be recognized together as 1 character. The character split function can be used to split the strokes into 2 separate characters.

Scan the characters 日月星辰, assuming that both the characters 日 and 月 are being recognized as 1 character, resulting in 明. As both the characters are too close to each other, they are being recognized as 1 character by the system, resulting in 明星辰.


Leave your cursor on the character 明 for 1-2 seconds and a window will pop up with a list of buttons. You can click on  to split up the character 明 into 2 characters, resulting in 日 and 月.



*** Merge Character**


When the strokes in a character are distanced too far from one another, they are usually recognised as different characters rather than 1 character. Now you can actually make use of the inbuilt character combination function and combine both characters into 1 single character.



Scan the characters 栋梁 and assuming that the result do not appear correctly, you might get 木东梁 as illustrated in the figure. As there might be some varying issues, now the character has been split into 2 different characters, being 木 and 东.

Leave your cursor on the character 木 for 1-2 seconds and a window will pop up with a list of buttons. Click on the second button  and you will have the separate characters combined into a single character 棟.



* Phrase Correction

In Full Screen mode if you wish to enter a common phrase such as an idiom, if you aren't sure of how to write one of the characters you can substitute a similar sounding character instead. If you are not sure of the character's pronunciation either, choose any at random. When you have finished writing the phrase, select the uncertain character with the mouse then click on the phrase correction button . The system will examine the four characters before or after this particular character to guess what you meant and make the change.

1. When entering an idiom in Full-Screen mode such as 『拔苗助长』, if you are not sure of how to write the character 『拔』, you can enter the character 『一』 instead to input 『一苗助长』.
2. Move the mouse over the character 『一』 and pause for a moment to bring up the “Candidate Characters Window”. Click the phrase correction button  and the 『一』 character will be changed to 『拔』.
3. If the phrase correction function came up with multiple candidate words, these will be shown in the candidate words window for you to choose from. For example, if the input was 『股份一限公司』 when you pause the mouse cursor over the 『一』 character, this will bring up the “Candidate Characters Window”. Pressing the phrase correction button  will bring up a list of all phrase correction candidate words for you to choose and make the correction with.

一苗助长



拔苗助长




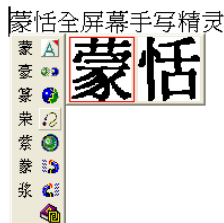
Note: Only Chinese recognition language provides Phrase Correction function.




3.4.2 Original Image

After making changes to the results, you can check your original scan to look at the difference and look at the original text when scanned.

Leave your cursor on the character for 1-2 seconds and a window will pop up with a list of buttons. Hold down the third button  from the left and you will see the original text being displayed.




3.4.3 Punctuation

Click on  and a panel listing of punctuation marks will be displayed accordingly, allowing you to input half shaped or full shaped punctuation marks.







3.4.4 Translation

The Balloon Interface provides you the translation function. Whenever you do not know the scanning Chinese or English words, you may check the translation via the online translation function.

When moving your cursor over the scanned word, a pop-up window will appear. Click  button to start online translation function. The translation window will close when moving cursor to other area.




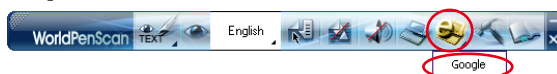
In the translation window, you may click  button to read out the unfamiliar Chinese or English words aloud. Click  or  to check the last or next word. Click  to see phrase and further explanation.





3.6 Online Translation

1. Click **[Online Translation]**  and select a translation Website from the toolbar. The software will then open Internet Explorer, visit the translation Website, and then open the [Translator Online] window.



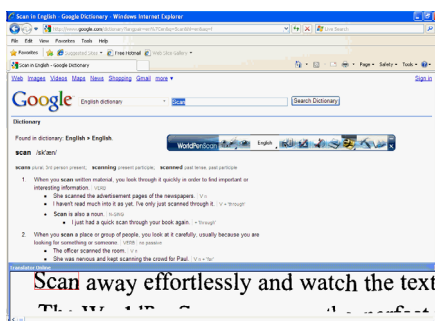
Tip: You can organize Website Links from the Translation Settings function. Please refer to 3.3.6 Translation Website Set Up for more detailed information.

2. Place a document on the table and place the scanner head at the starting word and aim the Scan Tip arrow at the center of the scan area, the press and drag the WorldPenScan pen in a straight line. The white auxiliary light from the Scan Tip indicates the pen is scanning. The scanned area will display on the **[Original Image]** portion of the screen and the first recognizable word will be translated.

Note: Before scanning , please select the Recognition Language which match the scanning words.

3. The translation result of the first recognized word will be displayed in the web browser. The original scanned image will also be shown in the [Translator Online] window as well.

Note: If the website does not support the enter function, please manually click the translate button on the website with your mouse.



4. If you have scanned more than one word, you can press the function key on the pen to see the translation of the next recognizable word.

Note: If the website does not support Enter function, it also cannot support hardware button. Please scan next word instead.

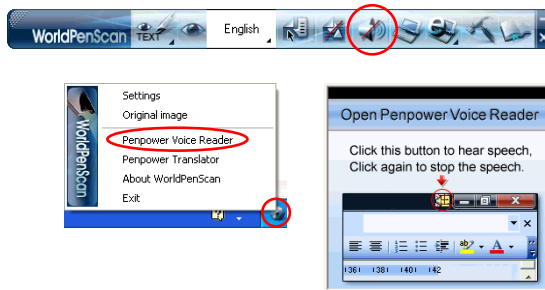
5. Click **[Translation]**  or close the [Translator Online] window.


Chapter 4 Penpower Voice Reader

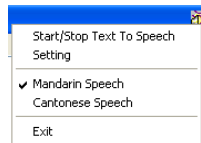
Penpower VoiceReader utilizes a state of the art text-to-speech technology, it reads in fluent Mandarin or Cantonese of any articles. You can use it as a tool for fast proofreading or in teaching the correct Mandarin/Cantonese pronunciation.



4.1 Open Penpower Voice Reader

1. Click [**VoiceReader**] button from the toolbar or [**Penpower VoiceReader**] from the tray icon menu to run Penpower VoiceReader.



2. When it starts up, there will be an icon on/off button  on the top right corner of your application, such as Word. You can click the icon to select **Mandarin Speech** or **Cantonese Speech**.



3. Choose a paragraph, click  and select [**Start/Stop Text to Speech**], the selected paragraph will be read out. Check your speaker if there's no sound.
4. During reading, click , and selecting [**Start/Stop Text to Speech**], it will stop reading.



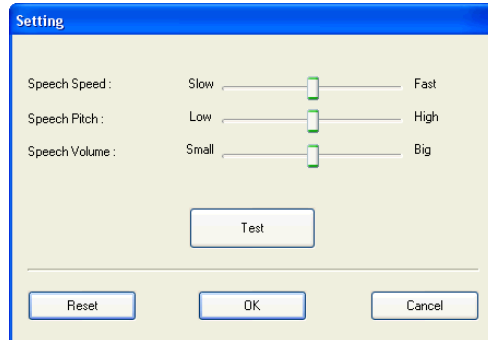
4.2 VoiceReader Setting

Click , select **[Setting]**, the **[Setting]** window will appear.

Speech Speed: Adjust speak speed.

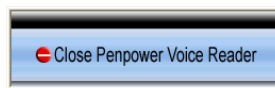
Speech Tone: Adjust tone level.

Speech Volume: Adjust speak volume.



4.3 Turn off Penpower VoiceReader

1. Click , select **[Exit]**.
2. When you see the following image, the Penpower VoiceReader is turned off and the icon on the upper right corner disappears.

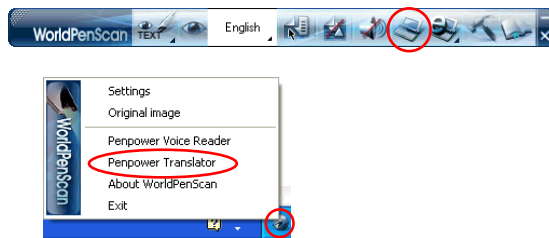


Chapter 5 Penpower Translator


This is a Chinese-English bidirectional translation software, which includes Chinese-English/English-Chinese dictionary lookup and Chinese-English/English-Chinese phrasal translation.

5.1 Open Penpower Translator

Click **[Translator]** button from the toolbar or **[Penpower Translator]** from the tray icon menu to run Penpower Translator.



5.2 English Character Dictionary Lookup

1. Click on .
2. On the top left hand corner, enter the English word that you want to look up in the dictionary and hit Enter. The explanation in Chinese will pop up immediately.





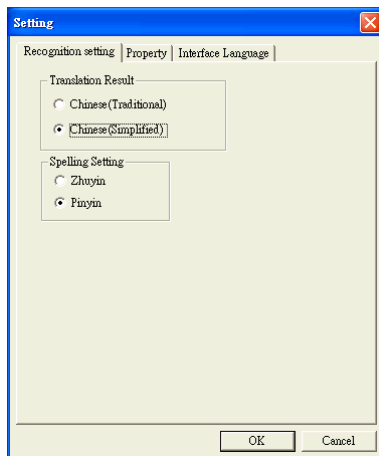
There are a number of buttons which you can see the usage example or the detailed explanation.

Click will command the system to read out the character.

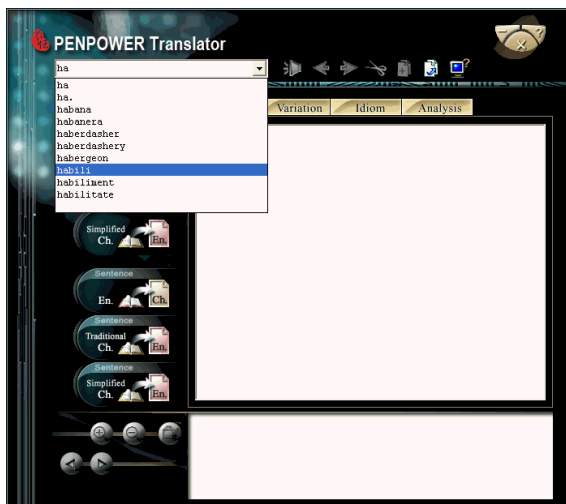
Previous Word **Next Word** buttons let you check the meaning of the next character or the previous one.

Click **Copy** button to copy the selected contents.

Click **System Setting** button to invoke the **Setting** window for setting recognition language recognition results, document Property and Interface language .



Tip: Due to the pre-emptive nature of the Translator, you do not need to input the characters completely. Hitting Enter will usually let the system complete the word and translation for you.

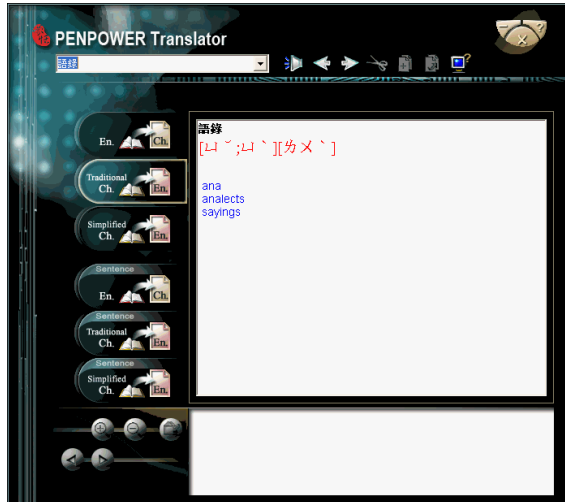



5.3 Chinese Character Dictionary

1. Click on  to enable the Chinese dictionary.

Tip: If the Chinese word you wish to look up is Simplified Chinese, please select the  translation option.

2. In similar fashion, input the Chinese character that you want to look up in the text field in the top left hand corner. Hit Enter and the system will present the explanation in English.





Click  to listen the pronunciation.

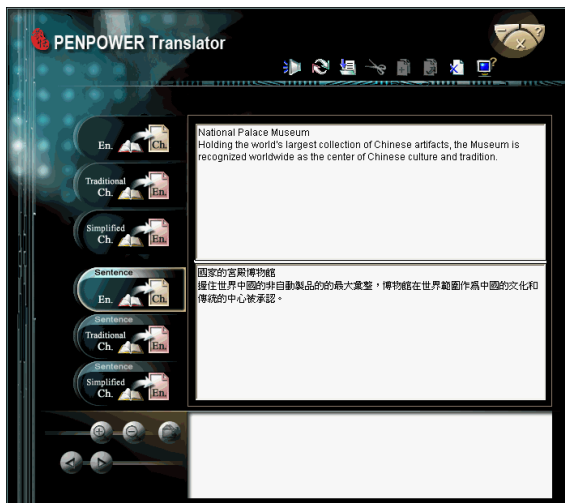
Click **Previous Item** / **Next Item**  buttons to check the meaning of the next character or the previous one.



5.4 English Phrasal Dictionary


1. Click on  to enable the English phrasal dictionary.
2. In the top left hand corner, input the text to be translated and explained in the field and click on  to translate.


Tip: During English phrasal translation, avoid inputting Chinese half-shaped punctuation to increase the translation accuracy.




Click **Read**  button to read all information from window you selected.

Click **Save**  button to save the translated information to text file.


Click **Cut**  button to cut the selected contacts.

Click **Copy**  button to copy the selected contents.


Click **Paste**  button to paste the selected contacts.

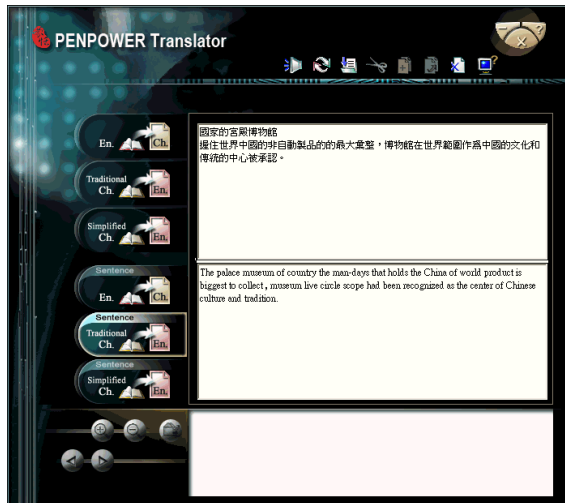
Click **Delete**  button to delete the selected contacts.

5.5 Chinese Phrasal Dictionary

1. Click on  to invoke the Chinese-English translation.

Tip: If the Chinese sentence you wish to look up is Simplified Chinese, please select the  translation option.

2. In the above frame, input the phrase or paragraph where appropriate and click on  to start the translation. The result will be displayed in the frame below.



Click **Read**  button to read all information from window you selected.





5.6 Translating Scanned Input

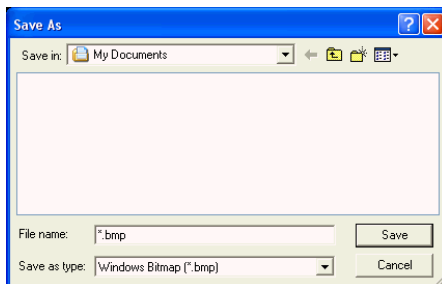
Other than checking up on words or phrases through the use of keyboard, you can also make use of WorldPenScan to input the phrase for you, while the original text will be displayed at the bottom of the window for you.




When translating a single word, inputting the word with WorldPenScan will let you input the complete phrase. Every push on the button on the pen will incur the translation on the next word and so forth.

Clicking on the **Previous Word**  or the **Next Word**  button will allow you to scroll through to the next or previous character in Translator's dictionary database, allowing you to look up on more meanings on the word's variants.

You can **zoom in**  or **zoom out**  to adjust the size of your scanning proportionally. You can also save the scan as a picture by clicking on .



You can also translate the whole paragraph of the scanning you have made with World-PenScan by clicking on  which will in turn translate whatever you have scanned into the opposite language. You can perform the translation phrase by phrase, or choose to have the translation done to the whole paragraph at one time.



You will not be able to use the **Previous Word**  / **Next Word**  buttons when you are in phrasal translation mode.



WorldPenScan V3.1 User Manual

Release: October, 2009

Penpower Technology Ltd.