

WorldPenScan

User Manual

Release: November, 2011
Version: 3.4tw

Penpower Technology Ltd.

Software User License Agreement

You are licensed to legally use this software program (“the Software”) by Penpower Technology Ltd (“Penpower”) under this license agreement (“The Agreement”). If you do not agree with any of the provisions in this Agreement, please do not install, copy or use the Software. By using the Software, you are deemed to fully understand and accept the provisions of this Agreement.

1. Intellectual Property

All intellectual property rights in the Software, together with all information and documents included in the packaging for the Software (including but not limited to copyrights), are property of Penpower, and are protected by relevant laws and regulations.

2. License to Use

You are authorized to use the Software on one (1) single computer only. You may not use the Software on any other machines other than the said single computer.

3. Authority to Copy

The Software and all documents included with the Software, and copyright thereof, are property of Penpower. You are licensed to make one (1) copy of the Software for your personal backup purposes. All other acts of copying are strictly prohibited. You may not sell, lease, disassemble, reverse engineer, copy, translate, adapt or derive the Software, or obtain the source code of the Software by any other means. You may not use the Software for any purposes other than those permitted under this Agreement.

4. Business Users

If you need to install or use the Software on more than one (1) computer, please contact Penpower or our local distributor to purchase a license for the additional use.

5. Liability

You agree to indemnify Penpower against all losses, costs, debts, settlement payments or other expenses (including but not limited to attorneys fees) arising from your breach of this Agreement, and you agree to compensate Penpower for all of the abovementioned damages.

6. No Warranty

Effectiveness of a packaged software in handling information is closely related to its software and hardware environment. The Software is published following careful development and product testing by Penpower, but Penpower is not able to conduct tests based on all possible combinations of software and hardware environment. Therefore, Penpower is unable to promise nor warrant that there will be absolutely no risk of loss or damage of information, or any other kind of loss, during installation and/or execution of the Software. You must be fully aware of your risks in using the Software.

Penpower will provide you with the Software and support services in respect of the Software to the maximum extent permitted by law. However, Penpower does not warrant that the Software and information included in the package of the Software contain no defects or errors. Penpower is not liable for any indirect, special or incidental loss arising from the Software, including but not limited to loss of profits, damage to business reputation, cessation of work, hardware malfunction or damage, or any other commercial damage or loss arising from commercial use of the Software.

7. Limitation of Liability and Damages

The maximum amount of compensation payable by Penpower, in respect of any damage incurred by you for any reason under this Agreement, is limited to the amount you have already paid to Penpower in respect of the Software.

Under no circumstances will Penpower be held liable for the possibility of loss, notwithstanding Penpower may be aware of the possibility of such loss.

8. Prohibition Against Sublicense

You are prohibited to assign the license in respect of the Software granted to you under this Agreement, or to grant a sublicense to another person.

9. Jurisdiction

With regards to any disputes arising from this Agreement, Penpower and you agree that the court having jurisdiction over the business location of Penpower will be the court in the first instance.

10. Miscellaneous

In the event that any provision of this Agreement is found to be invalid at law, such invalidity will not affect the validity of any other provisions, or the legal enforceability of such other provisions.

In the event that the Software cannot be executed under conditions of normal use, due to any damage to the original disk/s, Penpower will replace the disk/s free of charge.

Contents

Chapter 1 Product Introduction	1-1
1.1 Introduction	1-1
1.2 Features	1-1
Chapter 2 Getting Started.....	2-1
2.1 System Requirements	2-1
2.2 Hardware Specification	2-1
2.2.1 WorldPenScan	2-1
2.2.2 WorldPenScan Pro.....	2-2
2.3 Software Installation.....	2-2
2.4 Driver Installation.....	2-4
2.5 Running Penpower WorldPenScan.....	2-6
Chapter 3 Scanning and Settings.....	3-1
3.1 WorldPenScan Toolbar	3-1
3.2 Scan Mode	3-3
3.2.1 Sentence Scan	3-3
3.2.2 Word Scan	3-3
3.2.3 Image Scan.....	3-4
3.2.4 Business Mode.....	3-5
3.3 Balloon Interface	3-6
3.3.1 Candidates.....	3-6
3.3.2 Phrase Correction.....	3-7
3.3.3 Split Character	3-8
3.3.4 Merge Character.....	3-8
3.3.5 Original Image	3-9
3.3.6 Punctuation	3-9
3.3.7 Previous Characters and Related Characters.....	3-10
3.3.8 Translation	3-11
3.4 Online Translation	3-11
3.5 Original Image.....	3-12
3.6 Settings	3-13
3.6.1 General Settings.....	3-13
3.6.2 Recognition Settings	3-14
3.6.3 Recognition Language Settings	3-16
3.6.4 Button Configuration Settings	3-17

3.6.5 Online Translation Settings.....	3-18
3.6.6 Interface Language Settings.....	3-18
Chapter 4 Penpower Voice Reader	4-1
4.1 Open Penpower Voice Reader	4-1
4.2 Voice Reader Setting	4-2
4.3 Turn off Penpower Voice Reader.....	4-2
Chapter 5 Penpower Translator	5-1
5.1 Open Penpower Translator	5-1
5.2 English Character Dictionary Lookup.....	5-1
5.3 Chinese Character Dictionary	5-3
5.4 English Phrasal Dictionary	5-4
5.5 Chinese Phrasal Dictionary	5-5
5.6 Translating Scanned Input	5-6

There may be newer versions of the software that was released during or after this product's manufacturing date. If the content in the User Manual differs from the on-screen interface, please follow the instructions on the on-screen interface instead of the User Manual.

Chapter 1 Product Introduction

1.1 Introduction

WorldPenScan, the best input device, scans and recognizes 191 languages and put the scanned material into your computer via the USB interface. Whenever you come across any particular words or sentences that you do not understand, WorldPenScan will scan for you.

With an ergonomic design, WorldPenScan provides a comfortable handle which fits all left and right-handed users. Scan away effortlessly with the transparent scan tip. Where you see, where you scan.

1.2 Features

- **The Best Input Device**

Unlike the complicated process of the traditional scanner, WorldPenScan provides the easiest way for inputting words. Multi-thread architecture allows you to scan continuously without pause while recognition is being done on the fly.

- **Recognize 193 Languages**

The WorldPenScan can scan and recognize 191 languages, including English, French, German, Italian, Spanish, Japanese, Korean, Simplified Chinese, Traditional Chinese, and etc. For the detailed recognition language list, please refer to the appendix.

- **Automatic Tilt Calibration**

Auto-detect and calibrate the tilt angle of the scanned pictures to improve the recognition accuracy.

- **Online Translation**

The manageable online translation menu is attached on the toolbar. You can set up the translation website for translating instantly.

- **A Brand New Ergonomic Design**

Provide a comfortable handle which fits all left and right-handed users. Scan away effortlessly with its transparent scan tip. Where you see, where you scan. The stand alone USB cable can prevent cable damage and connection problems.



- **Scan Image**

The new feature of scanning images lets you scan and save the important images into MS Word files.

- **Balloon Interface**

Balloon interface offers you a non-interference environment. All scan results will directly transfer to the desired application. Balloon interface pops up and provides online translator, pronunciation, candidate words and related words whenever you need.

- **Penpower Voice Reader**

Penpower voice reader utilizes a state of the art text-to-speech technology, it reads in fluent Mandarin or Cantonese of any articles. You can use it as a tool for fast proof-reading or in teaching the correct Mandarin/Cantonese pronunciation.

- **Bidirectional Chinese to English Document Translation**

Come with translation software, Transtar, which can translate phrases or characters from English to Chinese or vice versa and have your complete Chinese document translated into English right away, with a read back function which reads out your document to you aloud.

- **Support Business Mode**

The business mode supports the recognition of barcodes and fonts such as OCR-A/B, and MICR fonts. With the business mode, you can scan and recognize barcodes and numbers or characters on invoices, checks, bills, coupons, and ect.

Chapter 2 Getting Started

2.1 System Requirements

- Pentium II 300 CPU or above
- 256MB of RAM
- 250MB of available hard disk space
- Windows 7/Vista/XP OS
- CD-ROM Drive
- USB port

2.2 Hardware Specification

- Dimensions: 130mm x 37mm x 18.5mm
- Weight: 30g (excluding USB Adapter)
- Interface: USB 2.0
- Scanning speed: 15 cm/sec.

Character size: 5~22 pt



2.2.1 WorldPenScan



2.2.2 WorldPenScan Pro



Function button:

While scanning text or images, clicking the function button will function as the **[Enter]** key on the keyboard by default. In the **[Word Scan]** mode, the function key can be used to send the next word.

Tip: You can refer Section 3.6.4 to configure the function button as Enter, Tab, Space, Click, or Double click.

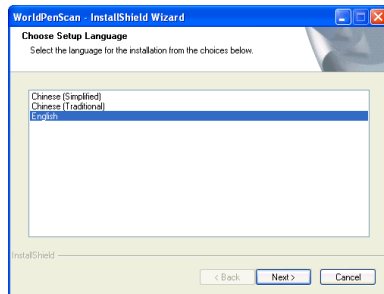
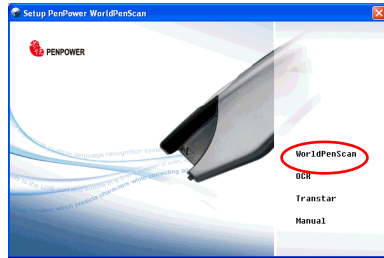
Note: The hardware pictures in the manual are for reference. The color of the hardware may be different due to the version differences.

2.3 Software Installation

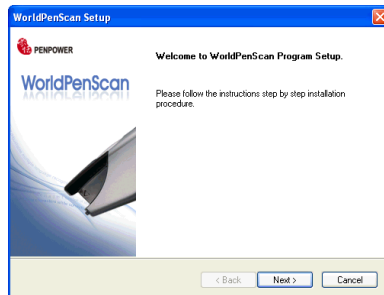
1. Insert the WorldPenScan setup CD into the CD-ROM drive. The installation program will start automatically. Click **[WorldPenScan]** to install WorldPenScan.

Tip: WorldPenScan includes OCR and Transtar. You can install them after installing WorldPenScan.

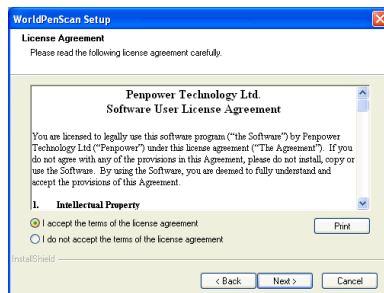
2. Please select an installation language and click **[Next]** to install.



3. Click **[Next]** to install.

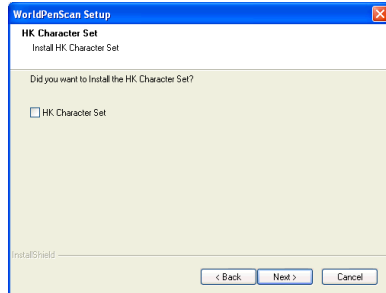


4. Please read the License Agreement, select **[I accept the terms of the license agreement]** and click **[Next]** to continue.

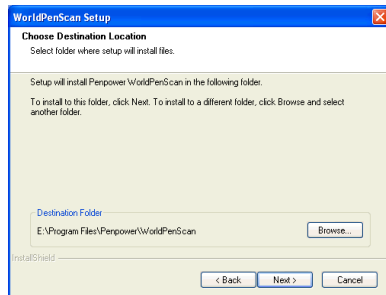




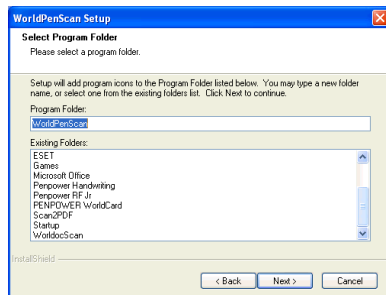
5. If you want to install HK Character Set, please check the [HK Character Set] option before you go to next step. If you don't want to install HK Character Set, just click [Next] to proceed the installation process.



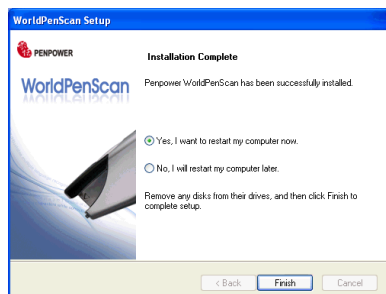
6. Select a destination folder to install the software to. Click [Next] to continue.



7. Choose the program folder that you want to install WorldPenScan to. If left as default, the software will create a new folder for you. Click [Next] to continue.



8. When the installation is finished, please restart your computer. Click [Finish] to restart your computer.



Note: When installing in the Windows 7 or Vista OS, the system may pop-up a warning message twice. Please select [Continue Anyway] to install the driver.

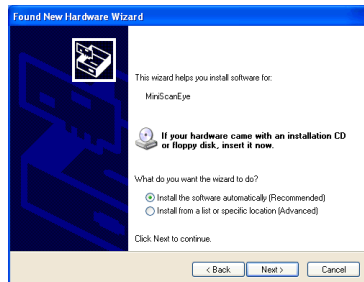
2.4 Driver Installation

1. Plug in the WorldPenScan pen into your computer's USB port and a window will appear. Select **[No, not this time]** and click **[Next]** to continue.

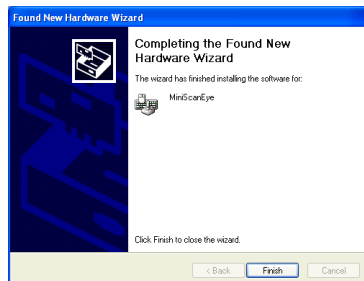
Note: Some computers may shut down accidentally after connection. This is due to the lack of power to support several USB devices. To avoid this problem, connect your WorldPenScan and other USB devices to an extra-powered USB hub.



2. Select **[Install the software automatically]** and click **[Next]** to continue.



3. Click **[Finish]** to end the installation.



Note: When connecting the scan pen to another USB port, follow these same steps to install again.

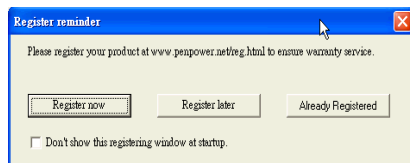


2.5 Running Penpower WorldPenScan

Go to [Start/All Programs/Penpower WorldPenScan/Penpower WorldPenScan] or double-click the  shortcut on the desktop to start the **WorldPenScan** toolbar.

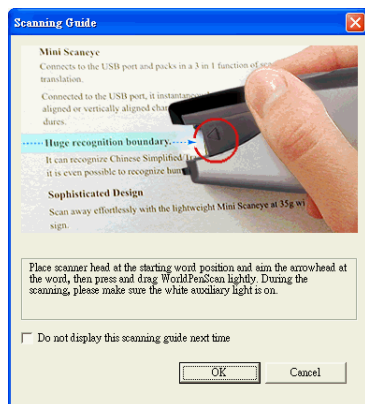
When running the **WorldPenScan** for the first time, a **Registration Reminder** will appear. Please click on **Register now** to register and receive the warranty service. You can also click **Register later** to close the reminder. When you need to register, click the **Tools** button and select **About** from the toolbar and then click on **Registration**. If you've registered, please click **Already Registered**.

Tip: If you do not need to be reminded again, you can check [Don't show this registering window at startup].



A **Scanning Guide** will appear after the registration reminder. Use the **WorldPenScan** as the guide directs.

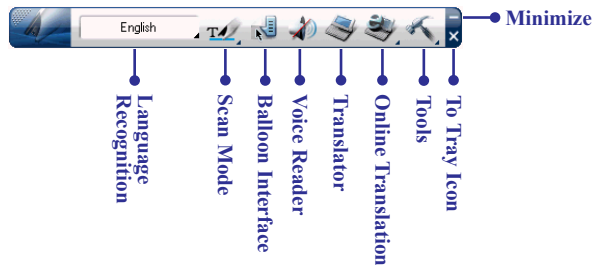
Note: If you would not like to read the message again, you can check [Do not display this scanning guide next time], and click [OK].




Chapter 3 Scanning and Settings

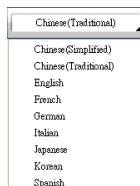
Go to [Start/All Programs/Penpower WorldPenScan/Penpower WorldPenScan] or double-click the  shortcut on the desktop to start the **WorldPenScan** toolbar.

3.1 WorldPenScan Toolbar





1. **Language Recognition:** The **WorldPenScan** can recognize Traditional Chinese, Simplified Chinese, English, French, German, Italian, Japanese, Korean, Spanish and more text. Click  to select the language you would like to scan.











Note: The Language Recognition must match the language of the content for optimal accuracy.

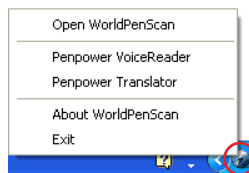


2. **Scan Mode:** Provide [Sentence Scan]  and [Word Scan]  modes.

- **Sentence Scan:** [Sentence Scan]  mode is the default scan mode for scanning an article or a sentence directly. The scanned article or sentence will be recognized into text and sent to your computer. Please refer to 3.2.1 Sentence Scan for more detailed information.
- **Word Scan:** When you want to scan a word or check the meaning or translation of one word, you can click the [Scan Mode] button to select [Word Scan]  mode, and scan a word or a sentence, and then select a word to input or check the meaning or translation. Please refer to 3.2.2 Word Scan for detailed information.




3. **Balloon UI** : Provide candidates, phrase correction, split character, merge characters, original image, punctuation, previous characters, related characters and translation. See 3.3 Using Balloon UI.
4. **Voice Reader** : Read aloud Chinese articles in Mandarin or Cantonese. See Chapter 4 Penpower Voice Reader.
5. **Translator** : Open Penpower Translator to translate Chinese-English/English-Chinese words and articles. See Chapter 5 Penpower Translator.
6. **Online Translation** : Provide a translation function in which you can assign a translation website to translate the scanned words. Please refer to 3.4 Online Translation for more detailed information.
7. **Tools** : Provide Image Scan, Business Mode, Original Image, Settings, Help and About.
 - . **Image Scan**: Select the **[Image Scan]** option, the scanned image or word will be sent to your computer in image format. Please refer to 3.2.3 Image Scan for more detailed information.
 - . **Business Mode**: Select the **[Business Mode]** option, the scanned digits will be sent to the cursor position. Please refer to 3.2.4 for more information.
 - . **Original Image**: Display the scanned image. See 3.5 Displaying Original Image.
 - . **Settings**: Provide general, recognition, online translation and interface language settings. See 3.6 Settings for more detailed information.
8. **Minimize** : Click  to minimize the toolbar to Taskbar.
9. **Minimize to Tray Icon** : Click  minimize the toolbar into a tray icon. Double-click the tray icon on the bottom-right of the screen to open the toolbar. Double-click  to open the function menu.




3.2 Scan Mode

3.2.1 Sentence Scan

1. Select the [Sentence Scan]  mode from the [Scan Mode].
2. Select the language of the text that you desire to scan from [Language Recognition].
3. Open any word processor, for example Microsoft Word or WordPad, and then click the location where you want to input.
4. Place a document on a flat surface and place the scan tip at the front of your desired scan area. Aim the scan tip arrow at the center of the desired scan area, and then press and drag the **WorldPenScan** pen in a straight line across the area like a highlighter. During the scanning, please make sure the white auxiliary light is on.
5. Stop applying pressure to the pen to stop scanning. The scanned text is displayed in your word processor immediately.

***Note:** Penpower WorldPenScan is able to scan and recognize one row of characters at a time. Please place the scan tip arrow at the center of the line.*

3.2.2 Word Scan


1. Click the [Scan Mode] button to select the [Word Scan]  mode, an extension window will appear under the toolbar.

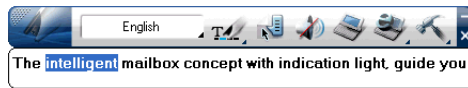
***Tip:** When first time switching to the Word Scan mode, the Word Scan Guide window will appear to guide you how to use the Word Scan mode. You can check [Do not display this word scan guide next time] to do not display it again.*




2. Select the language of the text that you desire to scan from the [Language Recognition].



3. Open any word processor, for example Microsoft Word or WordPad or click the **[Online Translation]**  button to open a translation website. And then click the location where you want input.
4. Place a document on a flat surface and place the scan tip in front of the word you desire to check. Aim the arrow at the center of the desired word, then press and drag the **WorldPenScan** pen in a straight line across a word or sentence. During the scanning, please make sure the white auxiliary light is on.
5. Stop applying pressure to the pen to stop scanning. The first recognizable word will be sent to the desired word processor or translation website. The meaning or translation will be displayed in the translation website as well.
6. If you scan more than one word, you can press the **[Function Button]** on the **World-PenScan** pen to choose next recognizable word or use your mouse to highlight a word from the extension window, the selected word will be sent to the **cursor location**. So you can literally check the meaning or translation of your choice.



3.2.3 Image Scan

1. Click **[Tools]**  button and select the **[Image Scan]** option from the drop-down menu.
2. Open a word processor that is able to input images, for example Microsoft Word. Click the location where you would like to input the scanned images.
3. Place a document on the a flat surface and place the scan tip at the starting word or picture. Aim the scan tip arrow at the center of the scan area, and then press and drag the scan pen in a straight line like a highlighter. The white auxiliary light from the scan tip indicates the pen is scanning.
4. Stop applying pressure to the pen to stop scanning. The scanned image will be displayed in your word processor immediately.




3.2.4 Business Mode

The Business Mode allows you to scan barcodes, invoices, checks, bills, postal codes, coupon numbers and racing numbers etc.

The fonts that the Business Mode supports are OCR A, OCR B, MICR, and other fonts as the samples below:

OCR A: 0 1 2 3 A B C a b c
 OCR B: 0 1 2 3 A B C a b c
 MS Gothic: 0 1 2 3 A B C a b c
 MICR : 1 2 3 4 5 6 7 8 9 0

The barcodes that the Business Mode supports are Codabar, Code 128, Code 39, Code 93, EAN 8, EAN 13, IATA 2 of 5, Industrial 2 of 5, Interleaved 2 of 5, Matrix 2 of 5, Patch, PostNet, UCC-128, UPC-A and UPC-E.

1. Click **[Tools]**  button and select the **[Business Mode]** option from the drop-down menu.
2. Open a word processor that is able to input images, for example Microsoft Word. Click the location where you would like to input the scanned words.
3. Place a document on the a flat surface and place the scan tip at the starting digit or letter. Aim the scan tip arrow at the center of the scan area, and then press and drag the scan pen in a straight line like a highlighter. The white auxiliary light from the scan tip indicates the pen is scanning.
4. Stop applying pressure to the pen to stop scanning. The scanned digits and letters will be displayed at the cursor position in your word processor immediately.



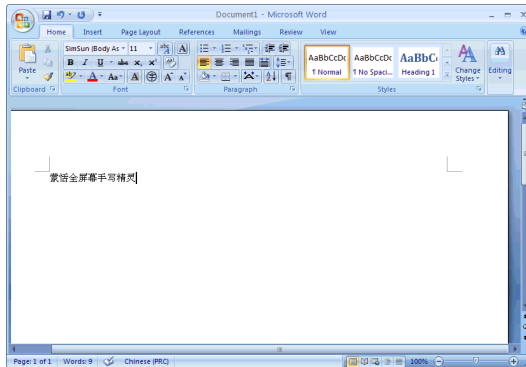
3.3 Balloon Interface

Click [**Balloon Interface**] button can launch Balloon Interface function.






When using **WorldPenScan** balloon interface, all scanning results will be directly transferred to the desired application.

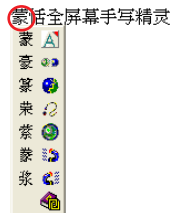
For example, scan “蒙恬全屏手写精灵” into MS Word continuously.



When you want to correct a certain character, all you need to do is to leave your cursor on the character for 1-2 seconds and a window showing a list of suggested corrections will be presented to you. This will enable you quicker correction and a faster way of inputting characters into your desired application.

***Tip:** You only need to leave your cursor on the character, you do not need to click any buttons.*

When the pop up window appear, you will have a list of suggested corrections, character combination buttons  or  hover your cursor over the display original text button .



3.3.1 Candidates


If you find an incorrect character in your result box, you can use the candidate function to replace with the correct character.

1. As per the illustration, the character has been recognized incorrectly.

2. Leave your cursor on the character for 1-2 seconds and a window showing a list of suggested corrections will be presented.
3. If the correct character appears among the list of characters presented, you can click on the character to have your current incorrect character replaced.
5. Lastly, notice that the wrong character has been replaced.




3.3.2 Phrase Correction

In Full Screen mode if you wish to enter a common phrase such as an idiom, if you aren't sure of how to write one of the characters you can substitute a similar sounding character instead. If you are not sure of the character's pronunciation either, choose any at random. When you have finished writing the phrase, select the uncertain character with the mouse then click on the phrase correction button . The system will examine the four characters before or after this particular character to guess what you meant and make the change.


1. When entering an idiom in Full-Screen mode such as 『拔苗助长』, if you are not sure of how to write the character 『拔』, you can enter the character 『一』 instead to input 『一苗助长』.

一苗助长



2. Move the mouse over the character 『一』 and pause for a moment to bring up the “Candidate Characters Window”. Click the phrase correction button  and the 『一』 character will be changed to 『拔』.

拔苗助长

3. If the phrase correction function came up with multiple candidate words, these will be shown in the candidate words window for you to choose from. For example, if the input was 『股份有限公司』 when you pause the mouse cursor over the 『一』 character, this will bring up the “Candidate Characters Window”. Pressing the phrase correction button  will bring up a list of all phrase correction candidate words for you to choose and make the correction with.




Note: Only Chinese language recognition provides Phrase Correction function.



3.3.3 Split Character

On the contrary, when the strokes in 2 characters are too close to each other, they may be recognized together as 1 character. The character split function can be used to split the strokes into 2 separate characters.

Scan the characters 日月星辰, assuming that both the characters 日 and 月 are being recognized as 1 character, resulting in 明. As both the characters are too close to each other, they are being recognized as 1 character by the system, resulting in 明星辰.


Leave your cursor on the character 明 for 1-2 seconds and a window will pop up with a list of buttons. You can click on  to split up the character 明 into 2 characters, resulting in 日 and 月.



3.3.4 Merge Character

When the strokes in a character are distanced too far from one another, they are usually recognised as different characters rather than 1 character. Now you can actually make use of the inbuilt character combination function and combine both characters into 1 single character.

Scan the characters 栋梁 and assuming that the result do not appear correctly, you might get 木东梁 as illustrated in the figure. As there might be some varying issues, now the character has been split into 2 different characters, being 木 and 东.



Leave your cursor on the character 木 for 1-2 seconds and a window will pop up with a list of buttons. Click on the second button  and you will have the separate characters combined into a single character 栋.



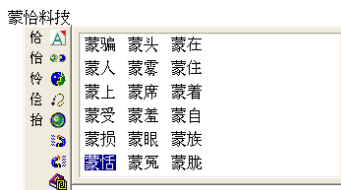


3.3.7 Previous Characters and Related Characters

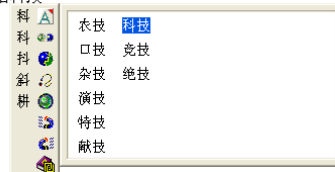
In any continuous text (2 characters), the first character is the second character's uplink, while the second character is the first character's downlink. For example 科技, where 科 is 技's uplink, while the character 技 is 科's downlink.

1. When using the WorldPenScan, the recognition results will be directly transferred to the desired application.
2. As shown in the illustration, the character 恬 has been recognized incorrectly as 恰 as well as 科 which also has been incorrectly recognized as 料.
3. Leave your cursor on the character 恰 for 1-2 seconds and a window will pop up listing possible characters. In the pop up window, click on the magnet which is facing left  and you will notice another pop up window which shows you a list of combination which the system thinks are possible replacements for the resulting recognition.
4. Leave your cursor on the character 料 for 1-2 seconds, which will once again invoke the pop up window with the list of possible replacements. This time round, click on the magnet which is facing right  and the very same panel will pop up again with a list of combination of characters for you to choose from.

蒙恰料技



蒙恰料技




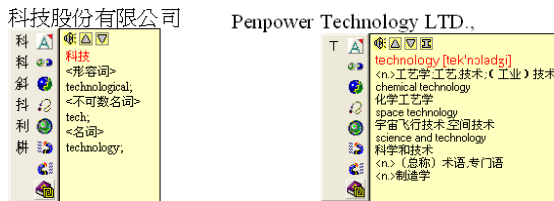
5. After the correct combination, the correct resulting text will now appear in the result box.





蒙恬科技

Note: Only Chinese language recognition provides combination list.

3.3.8 Translation

The Balloon Interface provides you the translation function. Whenever you do not know the scanning Chinese or English words, you may check the translation via the online translation function. When moving your cursor over the scanned word, a pop-up window will appear. Click  button to start online translation function. The translation window will close when moving cursor to other area.





In the translation window, you may click  button to read out the unfamiliar Chinese or English words aloud. Click  or  to check the last or next word. Click  to see phrase and further explanation.

Note: Only Chinese and English language recognition provides Online Translation function.



3.4 Online Translation

WorldPenScan provides Online Translation function for you to translate words or sentences.

1. Select the **[Language Recognition]** which matches the scanning words.
2. Click the **[Online Translation]**  and then select any online translation Website. The online translation Website will be opened, and **WorldPenScan** will be switched to the **[Word Scan]**  mode automatically.

Tip: You can organize Website Links from the Translation Settings function. Please refer to 3.6.3 Online Translation Settings for more detailed information.

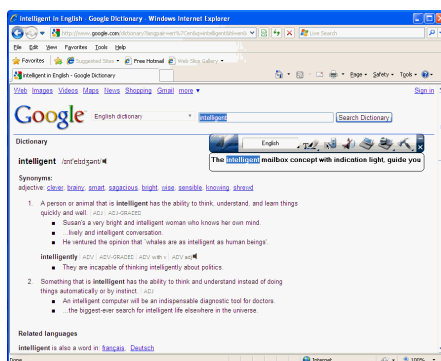
3. Place a document on a flat surface and place the scan tip at the starting word. Aim the scan tip arrow at the center of the desired area, the press and drag the scan pen in a straight line. The white auxiliary light from the Scan Tip indicates the pen is scanning.




4. The translation result of the first recognized word displays in the Website.

Note: If the Website does not support the enter function, please manually click the translate button on the website with your mouse.

5. If you scan more than one word, you can press the **[Function button]** on the scan pen to see the translation of the next recognizable word. You can also use your mouse to highlight a word from the extension window, the selected word will be sent to the cursor location for translating.




3.5 Original Image

Click **[Tools]**  button and select the **[Original Image]** option from the drop-down menu to open the **[Original Image]** window. After scanning, the **[Original Image]** window displays the scanned image. You can check the scanned image to compare with the original text. This can help you improving your scan technique for more accurate recognition results.



Tip: You can right click on the original image to save the image to .bmp or .pcx file.

3.6 Settings

Click **[Tools]**  button and select **[Settings]** from the drop-down menu to set up the general, recognition, online translation and interface language settings.

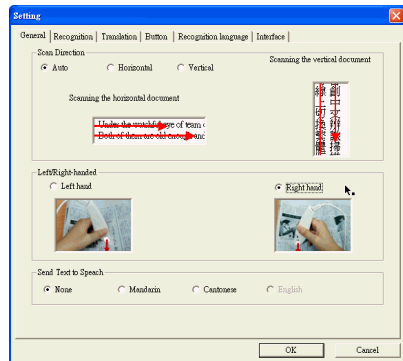
3.6.1 General Settings

In the **[General]** setting page, you can set up the scan direction, left/right-handed and sound.

Scan Direction

WorldPenScan must be used to scan the characters in consistent direction, any changes to the direction will cause inaccurate recognition results.

When choosing Traditional Chinese, Simplified Chinese, Japanese or Korean as the language recognition, you can accord to the document you want to scan to choose the scan direction manually.



Scanning Horizontal Text

When scanning horizontal text, you can choose the **[Horizontal]** option. Hold the Pen firmly, as you would hold a highlighter, while the Pen's tip is at an angle of between 70 and 80 degrees to the page. Align the Scan Tip arrow on your pen to the center of the characters. Then move the pen left-to-right or right-to-left to scan.



Left hand:
Scan from right-to-left or from left-to-right



Right hand:
Scan from left-to-right or from right-to-left

***Note:** Penpower WorldPenScan is able to scan and recognize one row of characters at a time. Please place the pen in such a manner so that the Scan Tip arrow is at the center of the line of text.*



Scanning Vertically Aligned Text

When scanning vertically aligned text, you can choose [**Vertically**] and then select [**Left-hand**] or [**Right-hand**]. To scan the text, please hold the pen firmly as you hold a highlighter, with the pen tip at an angle between 70 to 80 degrees to the page. Align the Scan Tip arrow on your pen to the center of the characters.



Left Hand



Right Hand

Note: The Left/Right-handed option only available when you select the vertical direction.

Convert Text to Speech

When choosing Chinese Traditional or Chinese Simplified as the language recognition, you can choose to listen the recognized word in Mandarin or Cantonese.

When choosing English as the language recognition, you can choose to listen the recognized English word.

3.6.2 Recognition Settings

In the [**Recognition Setting**] page, you can set up the recognition results, recognition contents and at the end of scan, insert a space automatically.

Recognition Results

When choosing Chinese Traditional or Chinese Simplified as the language recognition, you can choose to output the recognized characters in Chinese Traditional or Chinese Simplified.

If you prefer the output results of punctuations are full width, please check this option [Output full-width punctuations].

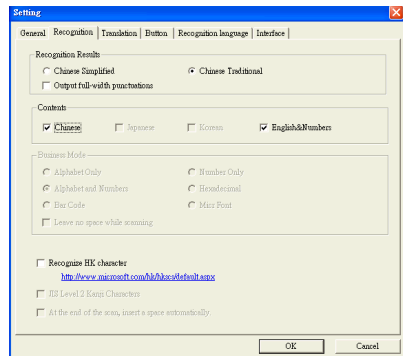
Recognition Content

When choosing Traditional Chinese, Simplified Chinese, Japanese or Korean as the language recognition, you can choose to recognize the characters in Chinese/Japanese/Korean or English & Numeral.

For example, when the document you want to scan does not contain English & Numeral, you may only check Chinese, Japanese or Korean for higher recognition accuracy.

Business Mode

If your device is WorldPenScan Pro, you can set the recognition result of the Business Mode as Alphabet Only, Alphabet and Numbers, Bar Code, Number Only, Hexadecimal, Micr Font. Moreover, you can check **Leave no space while scanning** if you don't want spaces inserted while scanning.



Recognize HK Character

When choosing Traditional Chinese as the language recognition, you can check the **[Recognize HK Character]** to recognize Hongkong characters. If you do not need to recognize Hongkong characters, please do not check it for higher recognition accuracy.

You can connect to the <http://www.microsoft.com/hk/hkscs/default.aspx> to check the Hong Kong characters list.

JIS Level 2 Kanji Characters


When choosing Japanese as the language recognition, you can check the **[JIS Level 2 Kanji Characters]** to recognize the JIS level 2 Kanji characters. If you do not need to recognize JIS level 2 Kanji characters, please do not check it for higher recognition accuracy.

At the End of the Scan, Insert a Space Automatically


When choosing English, French, German, Italian or Spanish as the language recognition, you can check the **[At the end of the scan, insert a space automatically]**. While scanning text, the system will automatically add a space at the end of the scan.

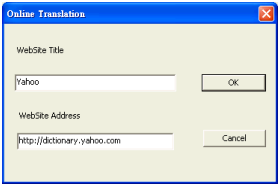
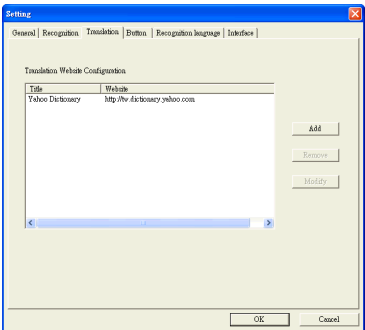


3.6.3 Online Translation Settings

In the **[Online Translation]** setting page, you can add, remove, and modify online translation websites. The websites will be shown under the **[Online Translation]**  menu of the toolbar.

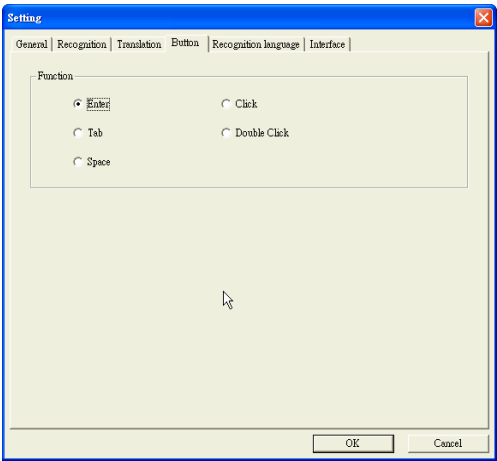
Click the **[Add]** button to open the Translation Website Setup window. Input the translation website name and its URL address, then click **[OK]**. You can also modify or remove a website by clicking the **[Modify]** button or the **[Remove]** button.

You will find the changes when clicking **[Online Translation]**  button from the toolbar.



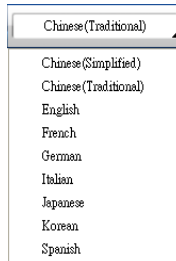
3.6.4 Button Configuration Settings

The default function of Function Button is Enter. You can replace Enter by Tab, Space, Click, or Double Click. Select the Button Configuration tab and then you can select which function you want the Function Button to be.



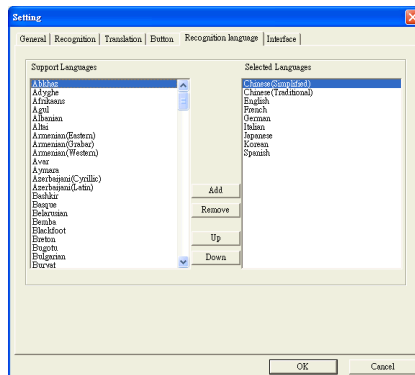
3.6.3 Recognition Language Settings

WorldPenScan provides 191 recognition languages for you to choose. In the toolbar, you can drag down the recognition menu to select the recognition language you want.



You can modify the recognition language menu in the Recognition Language tab of Setting. In the Recognition Language Tab, the left column contains 191 recognition languages for you to choose. The languages appear in the right column will all appear on the recognition language drag down menu on the tool bar.

In this tab, you can select the recognition language in the left column and click [add] to add it into the right column. If you want to remove a language from the right column, you can select the language you want to remove and click [Remove] to remove it from the right column.



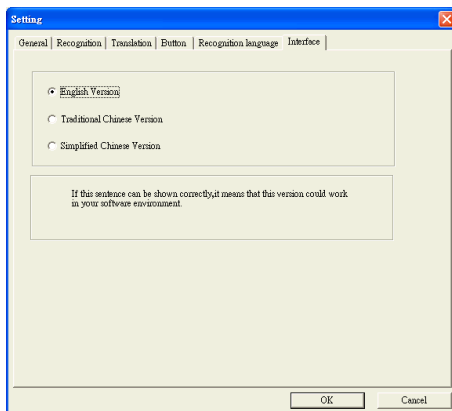
Tip: Select a language in the right column and click **Up** or **Down**, you can change this language's order.



3.6.6 Interface Language Settings

In the **[Interface]** setting page, you can choose the interface version as Traditional Chinese, Simplified Chinese or English. After choosing a language, check the description area underneath.

If the description sentence does not display properly, which means your Windows OS does not support the given language display. Please choose another language.

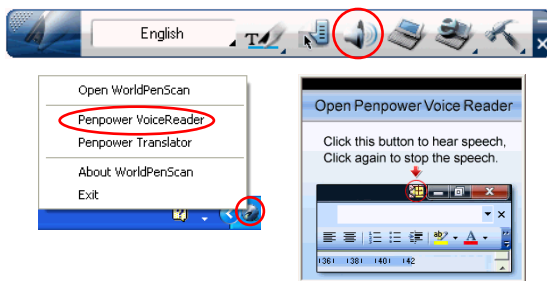



Chapter 4 Penpower Voice Reader

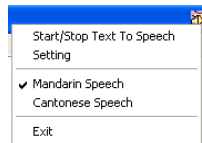
Penpower Voice Reader utilizes a state of the art text-to-speech technology, it reads in fluent Mandarin or Cantonese of any articles. You can use it as a tool for fast proofreading or in teaching the correct Mandarin/Cantonese pronunciation.



4.1 Open Penpower Voice Reader

1. Click **[Voice Reader]** button from the toolbar or **[Penpower VoiceReader]** from the tray icon menu to run Penpower Voice Reader.



2. When it starts up, there will be an icon on/off button  on the top right corner of your application, such as Word. You can click the icon to select **Mandarin Speech** or **Cantonese Speech**.



3. Choose a paragraph, click  and select **[Start/Stop Text to Speech]**, the selected paragraph will be read out. Check your speaker if there's no sound.
4. During reading, click , and selecting **[Start/Stop Text to Speech]**, it will stop reading.



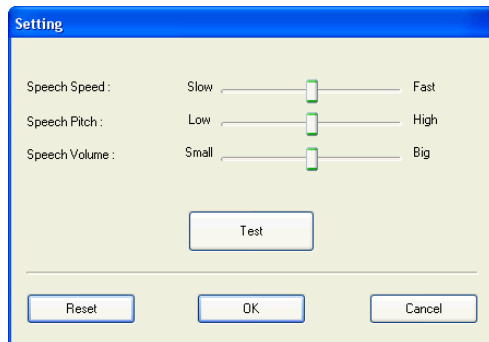
4.2 Voice Reader Setting

Click , select **[Setting]**, the **[Setting]** window will appear.


Speech Speed: Adjust speak speed.

Speech Tone: Adjust tone level.

Speech Volume: Adjust speak volume.



4.3 Turn off Penpower Voice Reader

1. Click , select **[Exit]**.
2. When you see the following image, the Penpower VoiceReader is turned off and the icon on the upper right corner disappears.





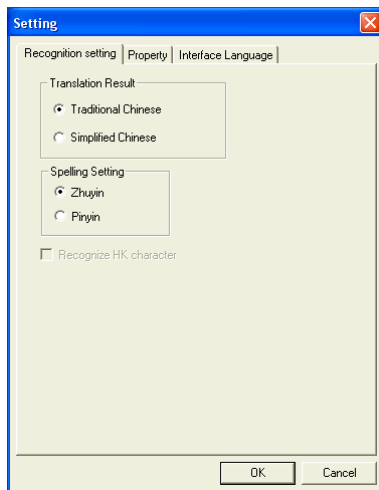
There are a number of buttons which you can see the usage example or the detailed explanation.

Click will command the system to read out the character.

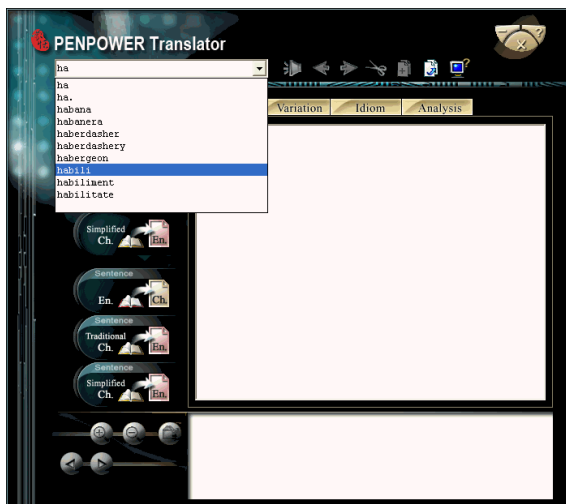
Previous Word **Next Word** buttons let you check the meaning of the next character or the previous one.

Click **Copy** button to copy the selected contents.

Click **System Setting** button to invoke the **Setting** window for setting recognition language recognition results, document Property and Interface language .



Tip: Due to the pre-emptive nature of the Translator, you do not need to input the characters completely. Hitting Enter will usually let the system complete the word and translation for you.

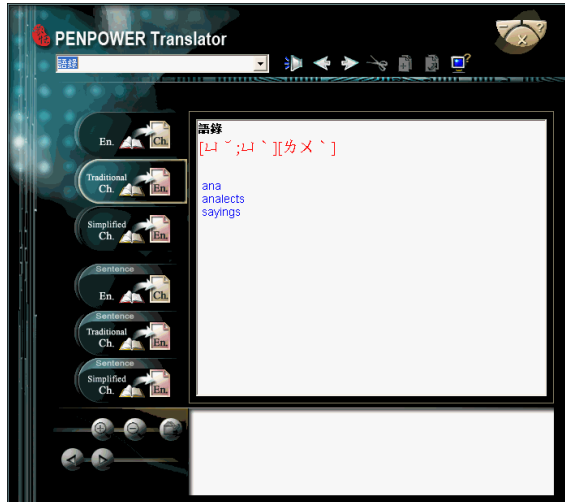



5.3 Chinese Character Dictionary

1. Click on  to enable the Chinese dictionary.

Tip: If the Chinese word you wish to look up is Simplified Chinese, please select the  translation option.

2. In similar fashion, input the Chinese character that you want to look up in the text field in the top left hand corner. Hit Enter and the system will present the explanation in English.





Click  to listen the pronunciation.

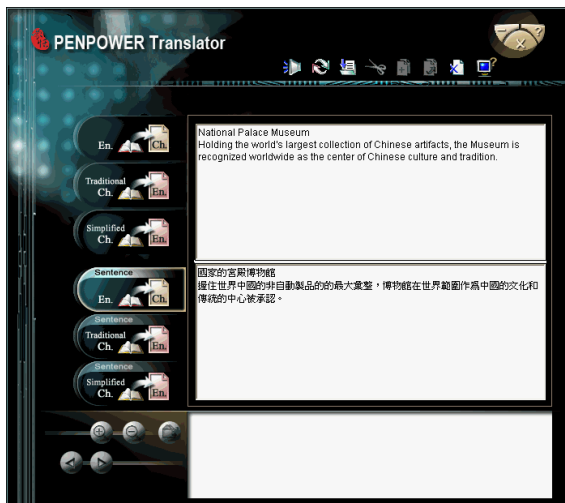
Click **Previous Item** / **Next Item**  buttons to check the meaning of the next character or the previous one.



5.4 English Phrasal Dictionary


1. Click on  to enable the English phrasal dictionary.
2. In the top left hand corner, input the text to be translated and explained in the field and click on  to translate.


Tip: During English phrasal translation, avoid inputting Chinese half-shaped punctuation to increase the translation accuracy.





Click **Read**  button to read all information from window you selected.

Click **Save**  button to save the translated information to text file.


Click **Cut**  button to cut the selected contacts.

Click **Copy**  button to copy the selected contents.


Click **Paste**  button to paste the selected contacts.

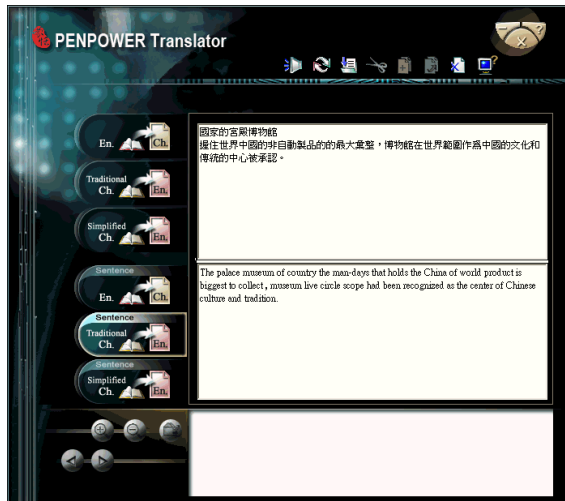
Click **Delete**  button to delete the selected contacts.

5.5 Chinese Phrasal Dictionary

1. Click on  to invoke the Chinese-English translation.

Tip: If the Chinese sentence you wish to look up is Simplified Chinese, please select the  translation option.

2. In the above frame, input the phrase or paragraph where appropriate and click on  to start the translation. The result will be displayed in the frame below.



Click **Read**  button to read all information from window you selected.





5.6 Translating Scanned Input

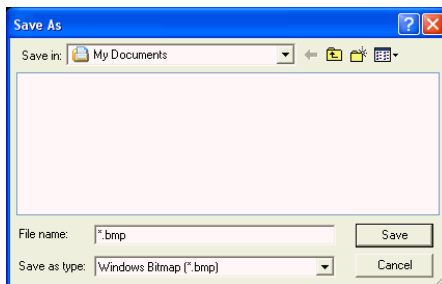
Other than checking up on words or phrases through the use of keyboard, you can also make use of WorldPenScan to input the phrase for you, while the original text will be displayed at the bottom of the window for you.




When translating a single word, inputting the word with Scaneye will let you input the complete phrase. Every push on the button on the pen will incur the translation on the next word and so forth.



Clicking on the **Previous Word**  or the **Next Word**  button will allow you to scroll through to the next or previous character in Translator's dictionary database, allowing you to look up on more meanings on the word's variants.

You can **zoom in**  or **zoom out**  to adjust the size of your scanning proportionally. You can also save the scan as a picture by clicking on .



You can also translate the whole paragraph of the scanning you have made with World-PenScan by clicking on  which will in turn translate whatever you have scanned into the opposite language. You can perform the translation phrase by phrase, or choose to have the translation done to the whole paragraph at one time.



You will not be able to use the **Previous Word**  / **Next Word**  buttons when you are in phrasal translation mode.



Appendix: Recognition Languages

Abkhaz

Adyghe

Afrikaans

Agul

Albanian

Altai

Armenian (Eastern)

Armenian (Grabar)

Armenian (Western)

Avar

Aymara

Azerbaijani (Cyrillic)

Azerbaijani (Latin)

Bashkir

Basque

Belarusian

Bemba

Blackfoot

Breton

Bugotu

Bulgarian

Buryat

Catalan

Cebuano

Chamorro

Chechen

Chinese (Simplified)

Chinese (Traditional)

Chukchee

Chuvash

Corsican

Crimean Tatar
Croatian
Crow
Czech
Dakota (Sioux)
Danish
Dargwa
Dungan
Dutch (Belgium)
Dutch (Netherlands)
English
Eskimo (Cyrillic)
Eskimo (Latin)
Estonian
Even
Evenki
Faroese
Fijian
Finnish
French
Frisian
Friulian
Gagauz
Galician
Ganda
German
German (Luxembourg)
German (new spelling)
Greek
Guarani
Hani
Hausa
Hawaiian

Hungarian
Icelandic
Indonesian
Ingush
Irish
Italian
Japanese
Jingpo
Kabardian
Kalmyk
Karachay-balkar
Karakalpak
Kasub
Kawa
Kazakh
Khakass
Khanty
Kikuyu
Kirghiz
Kongo
Korean
Koryak
Kpelle
Kumyk
Kurdish
Lak
Latin
Latvian
Lezgi
Lithuanian
Luba
Macedonian
Malagasy

Malay (Malaysian)
Malinke
Maltese
Mansi
Maori
Mari
Maya
Miao
Minangkabau
Mohawk
Moldavian
Mongol
Mordvin
Nahuatl
Nenets
Nivkh
Nogay
Norwegian (Bokmal)
Norwegian (Nynorsk)
Nyanja
Ojibway
OldEnglish
OldFrench
OldGerman
OldItalian
OldSpanish
Ossetian
Papiamento
Polish
Portuguese (Brazil)
Portuguese (Portugal)
Provençal
Quechua

Rhaeto-Romanic
Romanian
Romany
Rundi
Russian
Russian (Old Spelling)
Rwanda
Sami (Lappish)
Samoan
Scottish Gaelic
Selkup
Serbian (Cyrillic)
Serbian (Latin)
Shona
Slovak
Slovenian
Somali
Sorbian
Sotho
Spanish
Sunda
Swahili
Swazi
Swedish
Tabasaran
Tagalog
Tahitian
Tajik
Tatar
Tok Pisin
Tongan
Tswana
Tun

Turkish
Turkmen
Tuvinian
Udmurt
Uigur (Cyrillic)
Uigur (Latin)
Ukrainian
Uzbek (Cyrillic)
Uzbek (Latin)
Welsh
Wolof
Xhosa
Yakut
Zapotec
Zulu
Esperanto
Ido
Interlingua
Occidental
Arabic numbers
Arabic-Indian numbers
Basic
C/C++
COBOL
Fortran
JAVA
Pascal
Simple chemical formulas

Penpower WorldPenScan User Manual

Release: November, 2011

Version: 3.4tw