

# **mini ScanEYE**

## **User Manual**

Version: V2.2  
Release: July, 2011

# **Penpower Technology Ltd.**

## **Software User License Agreement**

You are licensed to legally use this software program (“the Software”) by Penpower Technology Ltd (“Penpower”) under this license agreement (“The Agreement”). If you do not agree with any of the provisions in this Agreement, please do not install, copy or use the Software. By using the Software, you are deemed to fully understand and accept the provisions of this Agreement.

### **1. Intellectual Property**

All intellectual property rights in the Software, together with all information and documents included in the packaging for the Software (including but not limited to copy-rights), are property of Penpower, and are protected by relevant laws and regulations.

### **2. License to Use**

You are authorized to use the Software on one (1) single computer only. You may not use the Software on any other machines other than the said single computer.

### **3. Authority to Copy**

The Software and all documents included with the Software, and copyright thereof, are property of Penpower. You are licensed to make one (1) copy of the Software for your personal backup purposes. All other acts of copying are strictly prohibited.

You may not sell, lease, disassemble, reverse engineer, copy, translate, adapt or derive the Software, or obtain the source code of the Software by any other means. You may not use the Software for any purposes other than those permitted under this Agreement.

### **4. Business Users**

If you need to install or use the Software on more than one (1) computer, please contact Penpower or our local distributor to purchase a license for the additional use.

### **5. Liability**

You agree to indemnify Penpower against all losses, costs, debts, settlement payments or other expenses (including but not limited to attorneys fees) arising from your breach of this Agreement, and you agree to compensate Penpower for all of the abovementioned damages.

### **6. No Warranty**

Effectiveness of a packaged software in handling information is closely related to its software and hardware environment. The Software is published following careful development and product testing by Penpower, but Penpower is not able to conduct tests based on all possible combinations of software and hardware environment. Therefore, Penpower is unable to promise nor warrant that there will be absolutely no risk of loss or damage of information, or any other kind of loss, during installation and/or execution of the Software. You must be fully aware of your risks in using the Software.

Penpower will provide you with the Software and support services in respect of the Software to the maximum extent permitted by law. However, Penpower does not warrant that the Software and information included in the package of the Software contain no defects or errors. Penpower is not liable for any indirect, special or incidental loss arising from the Software, including but not limited to loss of profits, damage to business reputation, cessation of work, hardware malfunction or damage, or any other commercial damage or loss arising from commercial use of the Software.

#### **7. Limitation of Liability and Damages**

The maximum amount of compensation payable by Penpower, in respect of any damage incurred by you for any reason under this Agreement, is limited to the amount you have already paid to Penpower in respect of the Software.

Under no circumstances will Penpower be held liable for the possibility of loss, notwithstanding Penpower may be aware of the possibility of such loss.

#### **8. Prohibition Against Sublicense**

You are prohibited to assign the license in respect of the Software granted to you under this Agreement, or to grant a sublicense to another person.

#### **9. Jurisdiction**

With regards to any disputes arising from this Agreement, Penpower and you agree that the court having jurisdiction over the business location of Penpower will be the court in the first instance.

#### **10. Miscellaneous**

In the event that any provision of this Agreement is found to be invalid at law, such invalidity will not affect the validity of any other provisions, or the legal enforceability of such other provisions.

In the event that the Software cannot be executed under conditions of normal use, due to any damage to the original disk/s, Penpower will replace the disk/s free of charge.

# Contents

<b>Chapter 1 Product Introduction .....</b>	<b>1-1</b>
1.1 Introduction .....	1-1
1.2 Features .....	1-1
<b>Chapter 2 Getting Started.....</b>	<b>2-1</b>
2.1 System Requirements.....	2-1
2.2 Hardware Specification.....	2-1
2.3 Software Installation .....	2-2
2.4 Launching mini ScanEYE.....	2-4
2.5 Registration .....	2-4
2.6 Scanning Guide .....	2-4
<b>Chapter 3 Scanning and Settings.....</b>	<b>3-1</b>
3.1 mini ScanEYE Toolbar.....	3-1
3.2 Scan Mode.....	3-2
3.2.1 Sentence Scan .....	3-2
3.2.2 Word Scan.....	3-2
3.3.4 Business Mode.....	3-3
3.2.4 Image Scan.....	3-4
3.3 Online Translation.....	3-5
3.4 Original Image .....	3-6
3.5 Settings.....	3-7
3.5.1 General Settings.....	3-7
3.5.2 Recognition Settings .....	3-9
3.5.3 Recognition Language Settings .....	3-11
3.5.4 Button Configuration Settings .....	3-12
3.5.5 Online Translation Settings.....	3-13

There may be newer versions of the software that was released during or after this product's manufacturing date. If the content in the User Manual differs from the on-screen interface, please follow the instructions on the on-screen interface instead of the User Manual.

# Chapter 1 Product Introduction

## 1.1 Introduction

mini ScanEYE, the handheld scan device with the highest accuracy rate on the market. mini ScanEYE is a perfect scan tool for students, journalists, business people and anyone who needs to get words, sentences and printed materials for immediate editing with no wait.

## 1.2 Features

### • The Best Scan and Translation Device

Connect to the computer through the USB port and is bundled with 3-in-1 functionality-scanning, recognition and translation.

### • Minimize Your Typing Efforts

mini ScanEYE can scan over 800 words per minute into your application software such as Words, Excel, Outlook, and text editors with high accuracy rate.

### • Recognize 191 Languages

mini ScanEYE can scan and recognize 191 languages, including English, French, German, Italian, Spanish, Japanese, Korean, Simplified Chinese, Traditional Chinese, and etc. For the detailed recognition language list, please refer to the appendix.

### • A good Language translation and Learning Tool

By scanning words or sentences directly to the Babylon application software or other language translation websites, you will find that mini ScanEYE Pro is a wonderful friend in translating and learning language aspects.

### • Ergonomic Design

The ergonomic and light design could fit all left and right-handed users and make you hold with comfort even long time scan.

### • Babylon Dictionary and Translation Software

mini ScanEYE co-works with Babylon, the world leading provider of quick online translation, and provides:

- more than 1400 dictionaries in more than 75 languages
- more than 800 language pairs to choose from
- simple one-click translation in any application



- web page and document translation (Word, PDF, Text)
- web page and document translation (Word, PDF, Text)

- **Support OCR-A/B banking fonts**

mini ScanEYE provides with the business mode, which supports the recognition of barcodes and fonts such as OCR-A/B, MS Gothic, and MICR fonts. With the business mode, you can scan and recognize barcodes and numbers or characters on invoices, checks, bills, coupons, and ect.

## Chapter 2 Getting Started

### 2.1 System Requirements

- Intel based Mac
- Mac OS X 10.5 version or later version
- USB port

### 2.2 Hardware Specification

- Dimensions: 130mm x 37mm x 18.5mm
- Weight: 30g (excluding USB Adapter)
- Interface: USB 2.0
- Scanning speed: 15 cm/sec.
- Character size: 5~22 pt



#### ***Function button:***

While scanning text or images, clicking the function button will function as the **[Enter]** key on the keyboard by default. In the **[Word Scan]** mode, the function key can be used to send the next word.

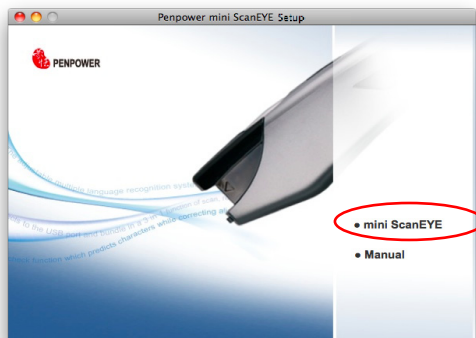
***Tip: You can refer Section 3.5.4 to configure the function button as Enter, Tab, Space, Click, or Double click.***





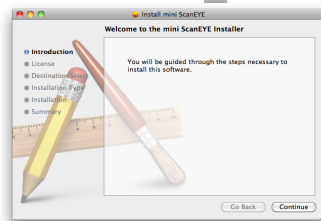
## 2.3 Software Installation

1. Insert the **mini ScanEYE** setup CD into the CD-ROM drive. Run the **Setup** and click [**mini ScanEYE Mac**] on the Installation window to install **mini ScanEYE Mac**.

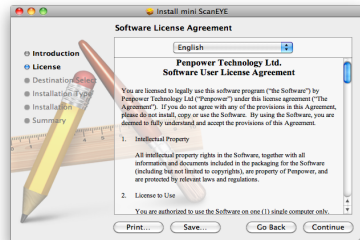


*Tip: mini ScanEYE provides you with the Babylon online translation service . Please select Babylon to install the application .*

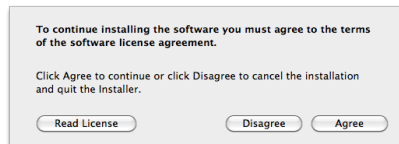
2. Please click **[Continue]** to install.



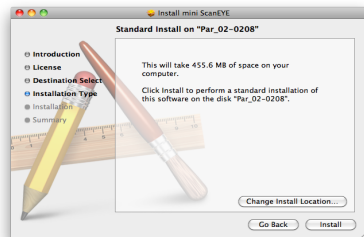
3. Please read the License Agreement, and click **[Continue]**.



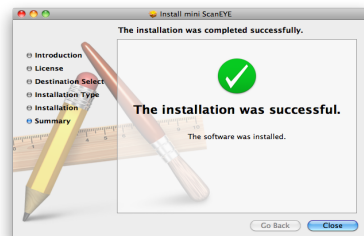
4. Click **[Agree]** to accept the license agreement.



5. Confirm the installation location and click **[Install]** to continue.



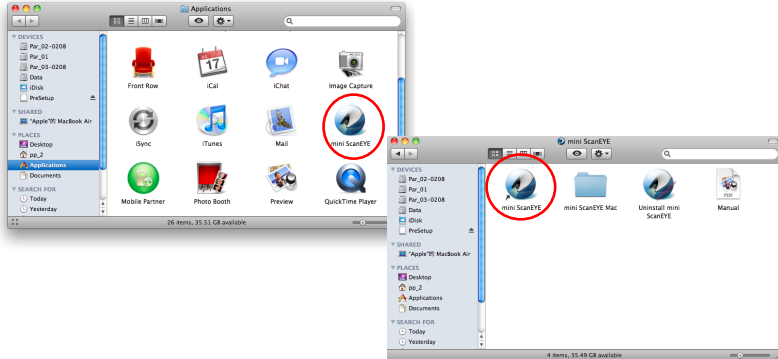
6. Click **[Close]** to finish the installation process.





## 2.4 Launching mini ScanEYE

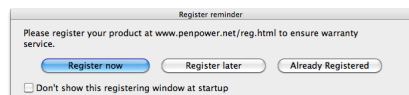
Run [Go/Applications/mini ScanEYE/mini ScanEYE] to launch mini ScanEYE.



## 2.5 Registration

When you first time run the **mini ScanEYE**, a registration reminder will appear. Please click on **[Register now]** to register and ensure the warranty service. You can also click **[Register later]** to close the reminder. When you need to register, click the **[Tools]** button and select **[About]** from the toolbar and then click on **[Register]**. If you have registered, please tap [Have Been Registered].

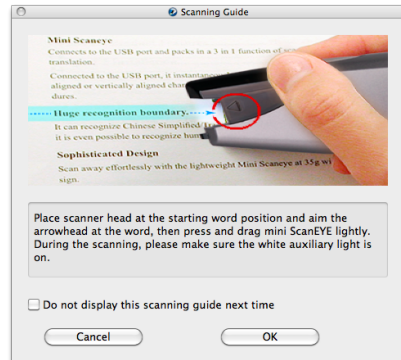
*Tip: If you do not need to be reminded again, you can check [Don't show this page at startup].*



## 2.6 Scanning Guide

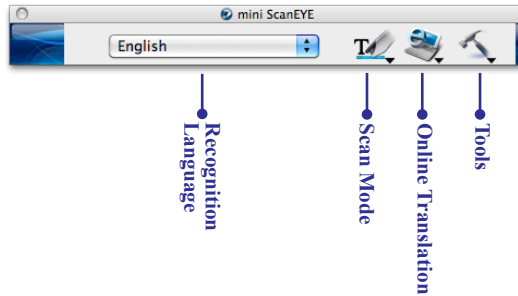
A **Scanning Guide** will appear after the registration reminder. Use the **mini ScanEYE** as the guide directs.

*Note: If you would not like to read the message again, you can check [Do not display this scanning guide next time], and click [OK].*



## Chapter 3 Scanning and Settings

### 3.1 mini ScanEYE Toolbar



#### 1. Recognition Language: mini ScanEYE

**Mac** can recognize 193 languages, such as English, French, German, Italian, Spanish, Simplified Chinese and Traditional Chinese, Japanese and Korean text. Click up and down button to see the list and select the language you would like to scan.



**Note:** *The Recognition Language must match the language of the content for optimal accuracy.*

#### 2. Scan Mode : Provide [Sentence Scan] and [Word Scan] modes.

- **Sentence Scan:** [Sentence Scan] mode is the default scan mode for scanning an article or a sentence directly. The scanned article or sentence will be recognized into text and sent to your computer. Please refer to 3.2.1 Sentence Scan for more detailed information.
- **Word Scan:** When you want to scan a word for checking the meaning or translation in Babylon or other online dictionary, you can click [Scan Mode] button to select [Word Scan] mode, and scan a word or a sentence, and then select a word to check the meaning or translation. Please refer to 3.2.2 Word Scan for more detailed information.

#### 3. Online Translation: Provide a translation function in which you can assign a translation website or Babylon software to translate the scanned words. Please refer to 3.3 Online Translation for more detailed information.


#### 4. Tools: Provide Image Scan, Original Image, Settings, Help and About.



- **Image Scan:** Check the **[Image Scan]** mode, the scanned image or word will be sent to your computer in image format. Please refer to 3.2.3 Image Scan for more detailed information.
- **Business Mode:** Check **[Business Mode]** to scan barcodes, coupons, and etc. See 3.2.4 Business Mode.
- **Original Image:** display the scanned image. See 3.4 Displaying Original Image.
- **Settings:** provide General, Translation Online settings. See 3.5 Settings for more detailed information.


## 3.2 Scan Mode

### 3.2.1 Sentence Scan

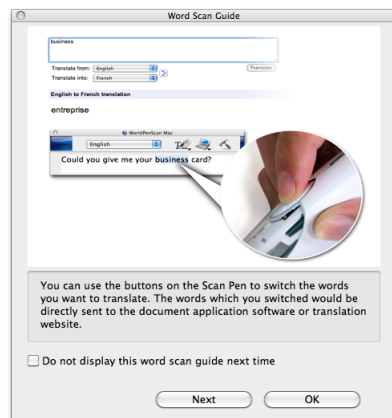
1. Select the **[Sentence Scan]** mode from the **[Scan Mode]** .
2. Select the language of the text that you would like to scan from the **[Recognition Language]**.
3. Open any word processor, for example Text Edit, and then click the location where you would like to input.
4. Place a document on a flat surface and place the scan tip at the front of your desired scan area. Aim the Scan Tip arrow at the center of the desired scan area, and then press and drag the **mini ScanEYE** pen in a straight line across the area like a highlighter. During the scanning, please make sure the white auxiliary light is on.
5. Stop applying pressure to the pen to stop scanning. The text that the pen has scanned are displayed in your word processor immediately.


*Note: Penpower mini ScanEYE is able to scan and recognize one row of characters at a time. Please place the Scan Tip arrow at the center of the line.*

### 3.2.2 Word Scan

1. Click the **[Scan Mode]**  button to select the **[Word Scan]** mode, an extension window will appear under the toolbar.

*Tip: When first time switching to the Word Scan mode, the Word Scan Guide window will appear to guide you how to use the Word Scan mode.*



2. Select the language of the text that you would like to scan from the **[Recognition Language]**.
3. Open any word processor, for example Text Edit and click the location where you can input, or click the **[Online Translation]**  button to open Babylon or other dictionary.
4. Place a document on a flat surface and place the scan tip in front of the word you desire to check. Aim the arrow at the desired word, then press and drag the **mini ScanEYE** pen in a straight line across the word. During the scanning, please make sure the white auxiliary light is on.
5. Stop applying pressure to the pen to stop scanning. The scanned word and meaning or translation will display in the Babylon or other dictionary.
6. If you scan more than one word, you can press the function button on the scan pen to choose next recognizable word or highlight a word from the extension window, the selected word will be sent to the **cursor location**. So you can literally check the meaning or translation of your choice.


### 3.3.4 Business Mode

The Business Mode allows you to scan barcodes, invoices, checks, bills, postal codes, coupon numbers and racing numbers etc.

The fonts that the Business Mode supports are OCR A, OCR B, MS Gothic, and MICR fonts as the samples below:

- OCR A: 0 1 2 3 A B C a b c
- OCR B: 0 1 2 3 A B C a b c
- MS Gothic: 0 1 2 3 A B C a b c
- MICR (E-13B): 1 2 3 4 5 6 7 8 9 0


The barcodes that the Business Mode supports are Codabar, Code 128, Code 39, Code 93, EAN 8, EAN 13, IATA 2 of 5, Industrial 2 of 5, Interleaved 2 of 5, Matrix 2 of 5, Patch, PostNet, UCC-128, UPC-A and UPC-E.

1. Click **[Tools]**  button and select the **[Business Mode]** option from the drop-down menu.
2. Open a word processor that is able to input images, for example Microsoft Word. Click the location where you would like to input the scanned words.



3. Place a document on the a flat surface and place the scan tip at the starting digit or letter. Aim the scan tip arrow at the center of the scan area, and then press and drag the scan pen in a straight line like a highlighter. The white auxiliary light from the scan tip indicates the pen is scanning.
4. Stop applying pressure to the pen to stop scanning. The scanned digits and letters will be displayed at the cursor position in your word processor immediately.


### 3.2.4 Image Scan

1. Click **[Tools]**  button and select the **[Image Scan]** option from the drop-down menu.
2. Open a word processor that is able to input images (i.e. Text Edit) and then click the location where you would like to input display the scanned images.
3. Place a document on the a flat surface and place the scan tip at the starting word or picture and aim the Scan Tip arrow at the center of the scan area, then press and drag the scan pen in a straight line. The white auxiliary light from the Scan Tip indicates the pen is scanning.
4. Stop applying pressure to the pen to stop scanning. The scanned picture will display on your word processor in an image format.

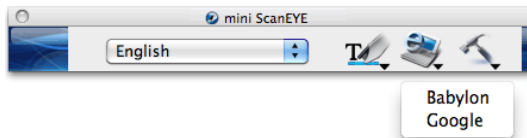


### 3.3 Online Translation

**mini ScanEYE** provides Babylon dictionary software and online Translation functions for you to translate words or sentences.


1. Select the **[Recognition Language]** which matches the scanning words.
2. Click the **[Online Translation]**  button from the toolbar and then select the **[Babylon]** or any online translation Website.

*Note: The **[Babylon]** option appears only when the Babylon software is installed.*



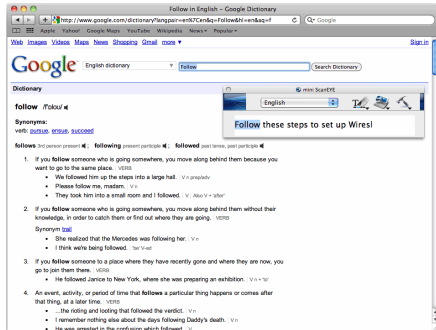
*Note: Please connect to internet before using the Online Translation function.*

*Tip: You can organize Website Links from the Translation Settings function. Please refer to 3.5.2 Online Translation Settings for more detailed information.*

3. **Babylon** software or online translation Website will be opened, and **mini ScanEYE** will be switched to the **[Word Scan]**  mode automatically.
4. Place a document on the flat surface and place the scan tip at the starting word and aim the Scan Tip arrow at the center of the scan area, the press and drag the scan pen in a straight line. The white auxiliary light from the scan tip indicates the scan pen is scanning.
5. The first recognizable word will be translated on the **Babylon** software or the translation Website.

*Note: If you are in Word Scan Mode, Google Dictionary appears for you to check the word meaning instead of Google translation.*






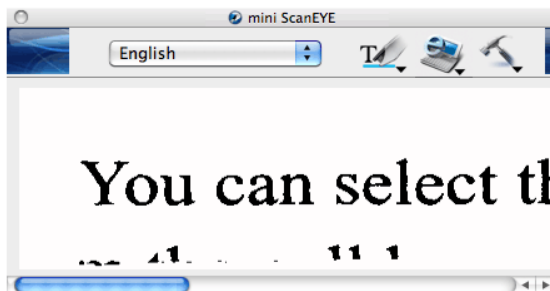
*Note: If the website does not support the enter function, please manually click the translate button on the website with your mouse.*

*Tip: Please refer to the Babylon help for operating the Babylon software.*

6. If you scan more than one word, you can press the **[Function button]** on the scan pen to see the translation of the next recognizable word. You can also use your mouse to highlight a word from the extension window, the selected word will be sent to the **cursor location** for translating.


### 3.4 Original Image

Click **[Tools]**  button and select the **[Original Image]** option from the drop-down menu to open the **[Original Image]** window. After scanning, the **[Original Image]** window displays the scanned image. You can check the scanned image to compare with the original text. This can help you improving your scan technique for more accurate recognition results.



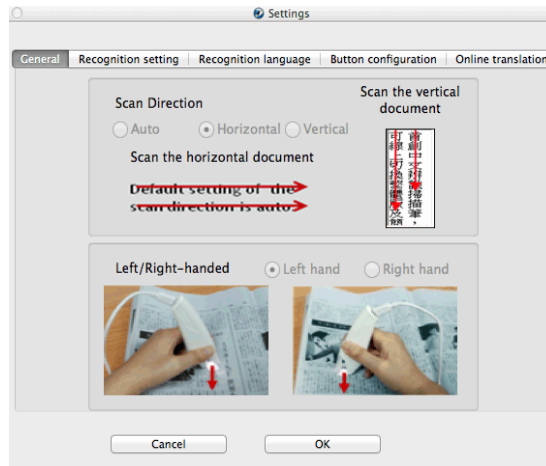
*Tip: You can click on the original image to save the image file.*

## 3.5 Settings

Click **[Tools]**  from the toolbar and select **[Settings]** from the drop-down menu to set up the general, recognition and online translation settings.

### 3.5.1 General Settings

In the **[General]** setting page, you can set up the scan direction and left/right-handed.



### Scan Direction

**WorldPenScan** must be used to scan the characters in consistent direction, any changes to the direction will cause inaccurate recognition results.

When choosing Chinese(Traditional), Chinese(Simplified), Japanese or Korean as the language recognition, you can accord to the document you want to scan to choose the scan direction manually.



## Scanning Horizontal Text

When scanning horizontal text or image, you can choose the **[Horizontal]** option. Place the pen on the text or image, move the pen left-to-right or right-to-left when scanning.



**Left hand:**  
Scan from right-to-left or from left-to-right



**Right hand:**  
Scan from left-to-right or from right-to-left

*Note: Penpower Mini ScanEYE is able to scan and recognize one row of characters at a time. Please place the pen in such a manner so that the Scan Tip arrow is at the center of the line of text.*

## Scanning Vertically Aligned Text

When scanning vertically aligned text, you can choose **[Vertically]** and then select **[Left-hand]** or **[Right-hand]**. You may scan the text in a straight top-to-bottom fashion. Align the Scan Tip arrow on your pen to the center of the characters.



**Left Hand**

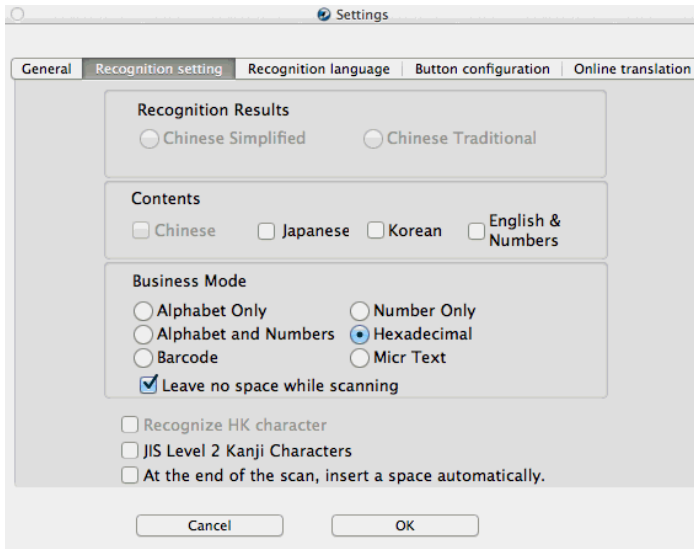


**Right Hand**

*Note: The Left/Right-handed option only available when you select the vertical direction.*

### 3.5.2 Recognition Settings

In the **[Recog Setting]** page, you can set up the recognition results, recognition contents and at the end of scan, insert a space automatically.



#### Recognition Results

When choosing Chinese(Traditional) or Chinese(Simplified) as the language recognition, you can choose to output the recognized characters in Chinese Traditional or Chinese Simplified.

#### Contents

When choosing Chinese(Traditional), Chinese(Simplified), Japanese or Korean as the language recognition, you can choose to recognize the characters in Chinese/Japanese/Korean or English & Numerics.

For example, when the document you want to scan does not contain English & Numerics, you may only check Chinese, Japanese or Korean for higher recognition accuracy.



### **Business Mode**

If your device is WorldPenScan Pro, you can set the recognition result of the Business Mode as Alphabet Only, Alphabe and Numbers, Bar Code, Number Only, Hexadecimal, Micr Text. Moreover, you can check **Leave no space while scanning** if you don't want spaces inserted while scanning.

### **Recognize HK Character**

When choosing Chinese(Traditional) as the language recognition, you can check the **[Recognize HK Character]** to recognize Hongkong characters. If you do not need to recognize Hongkong characters, please do not check it for higher recognition accuracy.

### **JIS Level 2 Kanji Characters**

When choosing Japanese as the language recognition, you can check the **[JIS Level 2 Kanji Characters]** to recognize the JIS level 2 Kanji characters. If you do not need to recognize JIS level 2 Kanji characters, please do not check it for higher recognition accuracy.

### **At the End of the Scan, Insert a Space Automatically**

When choosing English, French, German, Italian or Spanish as the language recognition, you can check the **[At the end of the scan, insert a space automatically]**. While scanning text, the system will automatically add a space at the end of the scan.

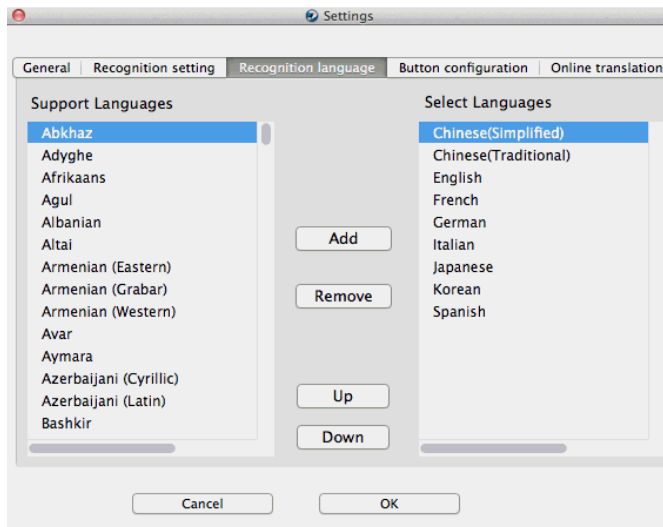
### 3.5.3 Recognition Language Settings

WorldPenScan provides 193 recognition languages for you to choose. In the toolbar, you can drag down the recognition menu to select the recognition language you want.



You can modify the recognition language menu in the Recognition Language tab of Setting. In the Recognition Language Tab, the left column contains 193 recognition languages for you to choose. The languages appear in the right column will all appear on the recognition language drag down menu on the tool bar.

In this tab, you can select the recognition language in the left column and click [Add] add it into the right column. If you want to remove a language from the right column, you can select the language you want to remove and click [Remove] to remove it from the right column.

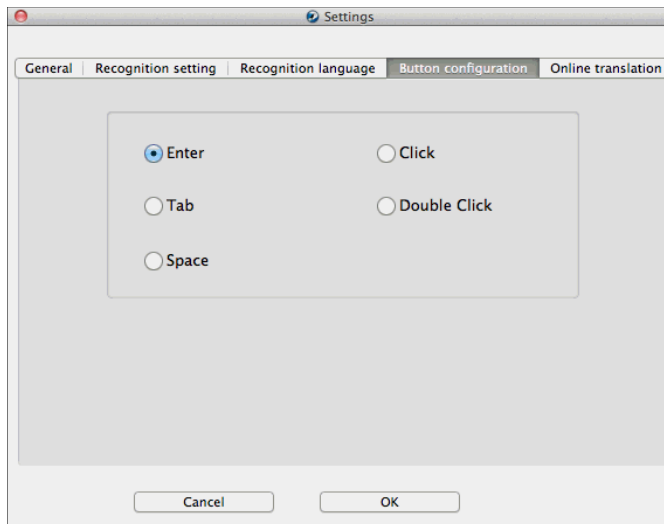


*Tip: Select a language in the right column and click [Up] or [Down]. You can change this language's order.*




### 3.5.4 Button Configuration Settings

The default function of Function Button is Enter. You can replace Enter by Tab, Space, Click, or Double Click. Select the Button Configuration tab and then you can select which function you want the Function Button to be.

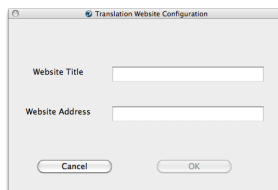
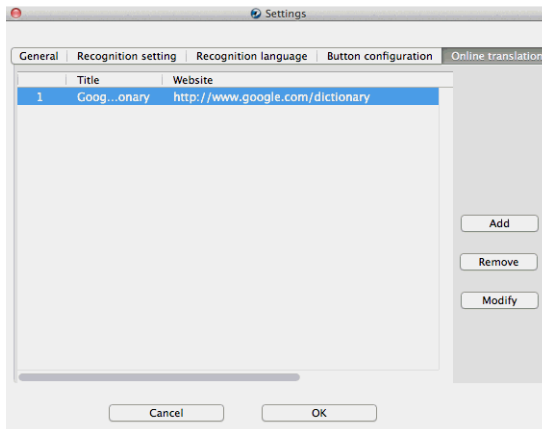


### 3.5.5 Online Translation Settings

In the **[Online Translation]** setting page, you can add, remove, and modify online translation websites. The websites will be shown under the **[Online Translation]**  button on the toolbar.

Click the **[Add]** button to open the Translation Website Setup window. Input the translation website name and its URL address, then click **[OK]**. You can also modify or remove a website by clicking the **[Modify]** button or the **[Remove]** button.

You will find the changes when clicking **[Online Translation]**  button from the toolbar.





## **Appendix: Recognition Languages**

Abkhaz  
Adyghe  
Afrikaan  
Agul  
Albanian  
Altai  
Armenian (Eastern)  
Armenian (Grabar)  
Armenian (Western)  
Avar  
Aymara  
Azerbaijani (Cyrillic)  
Azerbaijani (Latin)  
Bashkir  
Basque  
Belarusian  
Bemba  
Blackfoot  
Breton  
Bugotu  
Bulgarian  
Buryat  
Catalan  
Cebuano  
Chamorro  
Chechen  
Chinese (Simplified)  
Chinese (Traditional)  
Chukchee  
Chuvash  
Corsican

Crimean Tatar  
Croatian  
Crow  
Czech  
Dakota (Sioux)  
Danish  
Dargwa  
Dungan  
Dutch (Belgium)  
Dutch (Netherlands)  
English  
Eskimo (Cyrillic)  
Eskimo (Latin)  
Estonian  
Even  
Evenki  
Esperanto  
Faroese  
Fijian  
Finnish  
French  
Frisian  
Friulian  
Gagauz  
Galician  
Ganda  
German  
German (Luxembourg)  
German (new spelling)  
Greek  
Guarani  
Hani  
Hausa

Hawaiian  
Hungarian  
Icelandic  
Ido  
Indonesian  
Ingush  
Interlingua  
Irish  
Italian  
Japanese  
Jingpo  
Kabardian  
Kalmyk  
Karachay-balkar  
Karakalpak  
Kasub  
Kawa  
Kazakh  
Khakass  
Khanty  
Kikuyu  
Kirghiz  
Kongo  
Korean  
Koryak  
Kpelle  
Kumyk  
Kurdish  
Lak  
Latin  
Latvian  
Lezgi

Lithuanian  
Luba  
Macedonian  
Malagasy  
Malay (Malaysian)  
Malinke  
Maltese  
Mansi  
Maori  
Mari  
Maya  
Miao  
Minangkabau  
Mohawk  
Moldavian  
Mongol  
Mordvin  
Nahuatl  
Nenets  
Nivkh  
Nogay  
Norwegian (Bokmal)  
Norwegian (Nynorsk)  
Nyanja  
Occidental  
Ojibway  
OldEnglish  
OldFrench  
OldGerman  
OldItalian  
OldSpanish  
Ossetian  
Papiamentu

Polish  
Portuguese (Brazil)  
Portuguese (Portugal)  
Provençal  
Quechua  
Rhaeto-Romanic  
Romanian  
Romany  
Rundi  
Russian  
Russian (Old Spelling)  
Rwanda  
Sami (Lappish)  
Samoan  
Scottish Gaelic  
Selkup  
Serbian (Cyrillic)  
Serbian (Latin)  
Shona  
Slovak  
Slovenian  
Somali  
Sorbian  
Sotho  
Spanish  
Sunda  
Swahili  
Swazi  
Swedish  
Tabasaran  
Tagalog  
Tahitian  
Tajik

Tatar  
Tok Pisin  
Tongan  
Tswana  
Tun  
Turkish  
Turkmen  
Tuvinian  
Udmurt  
Uigur (Cyrillic)  
Uigur (Latin)  
Ukrainian  
Uzbek (Cyrillic)  
Uzbek (Latin)  
Welsh  
Wolof  
Xhosa  
Yakut  
Zapotec  
Zulu  
Arabic numbers  
Arabic-Indian numbers  
Basic  
C/C++  
COBOL  
Fortran  
JAVA  
Pascal  
Simple chemical formulas

# **mini ScanEYE V2.2 User Manual**

Release: July, 2011

Penpower Technology Ltd.