

Penpower mini ScanEYE II

User Manual

Edition: Released in July, 2006

PenPower Technology Ltd.

Software User License Agreement

You are licensed to legally use this software program (“the Software”) by PenPower Technology Ltd (“PenPower”) under this license agreement (“The Agreement”). If you do not agree with any of the provisions in this Agreement, please do not install, copy or use the Software. By using the Software, you are deemed to fully understand and accept the provisions of this Agreement.

1. Intellectual Property

All intellectual property rights in the Software, together with all information and documents included in the packaging for the Software (including but not limited to copyrights), are property of PenPower, and are protected by relevant laws and regulations.

2. License to Use

You are authorized to use the Software on one (1) single computer only. You may not use the Software on any other machines other than the said single computer.

3. Authority to Copy

The Software and all documents included with the Software, and copyright thereof, are property of PenPower. You are licensed to make one (1) copy of the Software for your personal backup purposes. All other acts of copying are strictly prohibited.

You may not sell, lease, disassemble, reverse engineer, copy, translate, adapt or derive the Software, or obtain the source code of the Software by any other means. You may not use the Software for any purposes other than those permitted under this Agreement.

4. Business Users

If you need to install or use the Software on more than one (1) computer, please contact PenPower or our local distributor to purchase a license for the additional use.

5. Liability

You agree to indemnify PenPower against all losses, costs, debts, settlement payments or other expenses (including but not limited to attorneys fees) arising from your breach of this Agreement, and you agree to compensate PenPower for all of the above-mentioned damages.

6. No Warranty

Effectiveness of a packaged software in handling information is closely related to its software and hardware environment. The Software is published following careful development and product testing by PenPower, but PenPower is not able to conduct tests based on all possible combinations of software and hardware environment. Therefore,

PenPower is unable to promise nor warrant that there will be absolutely no risk of loss or damage of information, or any other kind of loss, during installation and/or execution of the Software. You must be fully aware of your risks in using the Software.

PenPower will provide you with the Software and support services in respect of the Software to the maximum extent permitted by law. However, PenPower does not warrant that the Software and information included in the package of the Software contain no defects or errors. PenPower is not liable for any indirect, special or incidental loss arising from the Software, including but not limited to loss of profits, damage to business reputation, cessation of work, hardware malfunction or damage, or any other commercial damage or loss arising from commercial use of the Software.

7. Limitation of Liability and Damages

The maximum amount of compensation payable by PenPower, in respect of any damage incurred by you for any reason under this Agreement, is limited to the amount you have already paid to PenPower in respect of the Software.

Under no circumstances will PenPower be held liable for the possibility of loss, notwithstanding PenPower may be aware of the possibility of such loss.

8. Prohibition Against Sublicense

You are prohibited to assign the license in respect of the Software granted to you under this Agreement, or to grant a sublicense to another person.

9. Jurisdiction

With regards to any disputes arising from this Agreement, PenPower and you agree that the court having jurisdiction over the business location of PenPower will be the court in the first instance.

10. Miscellaneous

In the event that any provision of this Agreement is found to be invalid at law, such invalidity will not affect the validity of any other provisions, or the legal enforceability of such other provisions.

In the event that the Software cannot be executed under conditions of normal use, due to any damage to the original disk/s, PenPower will replace the disk/s free of charge.

CONTENTS

Chapter 1 Product Features.....	1-1
Chapter 2 Installation.....	2-1
2.1 System Requirements.....	2-1
2.2 Hardware Specification.....	2-1
2.3 Software Installation.....	2-2
2.4 Hardware Installation.....	2-3
Chapter 3 Character Input.....	3-1
3.1 Open Penpower mini ScanEYE II.....	3-1
3.2 Scan Direction.....	3-2
3.3 Scanning Vertically Aligned Text.....	3-2
3.4 Scanning Horizontal Text.....	3-3
3.5 Scanning Horizontal or Vertically Aligned Text.....	3-4
3.6 Reading Aloud as You Scan.....	3-4
3.7 UI language settings.....	3-4
3.8 Traditional/Simplified Chinese Recognition.....	3-5
3.9 Practise.....	3-6
3.10 Using Balloon UI.....	3-7
Correct a Certain Character.....	3-7
Candidates.....	3-7
Pre-emptive linking.....	3-8
Character Combination.....	3-9
Character Split.....	3-9
Displaying Original Form.....	3-10
Punctuation in Balloon UI.....	3-10
Online Translation.....	3-12
Chapter 4 Penpower TransEYE.....	4-1
4.1 Open Penpower TransEYE.....	4-1
4.2 English Character Dictionary Lookup.....	4-2
4.3 Chinese Character Dictionary.....	4-2

4.4 English Phrasal Dictionary.....4-3

4.5 Chinese Phrasal Dictionary.....4-3

4.6 Translating Scanned Input.....4-5

Chapter 1 Product Features

Chinese/English/Japanese Scan and Translation Pen

Penpower mini ScanEYE II, the best input device, scans and recognizes Traditional Chinese, Simplified Chinese, English and Japanese into your computer via the USB interface. Whenever you come across any particular words or sentences that you do not understand, mini ScanEYE II will scan and translate for you.

With an ergonomic design, the brand new mini ScanEYE II provides a comfortable handle which fits all left and right-handed users. Scan away effortlessly with the transparent scan tip. Where you see, where you scan.

Features

- **A brand new ergonomic design**

Provide a comfortable handle which fits all left and right-handed users. Scan away effortlessly with its transparent scan tip. Where you see, where you scan.

- **The best input and translation device**

Connects to the USB port and bundle in a 3 in 1 function of scan, recognition and translation. When scanning, it instantaneously recognizes and translates horizontal or vertical aligned characters, doing away with all the complex usage procedures.

- **Huge recognition boundary**

It can recognize 13060 Traditional Chinese characters, 6763 Simplified Chinese characters, 4184 Hong Kong characters, 3580 Japanese characters, English words, numbers and punctuation.

- **Multiple language recognition system**

The adjustable multiple language recognition system provides Traditional Chinese, Simplified Chinese, Hong Kong characters, English and Japanese recognition kernels.

- **Balloon Interface**

Balloon interface offers you a non-interference environment. All scan results will directly transfer to the desired application. Balloon interface pops up and provides online translator, pronunciation, candidate words and related words whenever you need.



- **Correction and pre-emptive computing**

Spell-check function which predicts characters while correcting alignment now empowers you with a more accurate scanning flow.

- **Continuous scanning and recognition**

Multi-thread architecture allows you to scan continuously without pause while recognition is being done on the fly.

- **Bi-directional Chinese to English document translation**

Translate phrases or characters from English to Chinese or vice versa and have your complete Chinese document translated into English right away, with a read back function which reads out your document to you aloud.

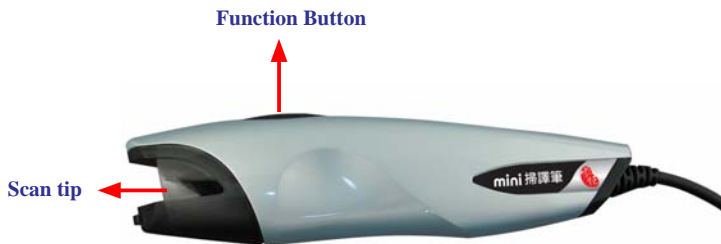
Chapter 2 Installation

2.1 System Requirements

- Pentium II 300 CPU or above
- 128MB of RAM
- 220MB of available hard disk space
- Windows 2000/XP
- USB port

2.2 Hardware Specification

- Dimensions: 131mm x 31mm x 19mm
- Weight: 45g (excludes USB cable)
- Interface: USB 2.0
- Scanning speed: 15 cm/sec
- Character size: 5~22 pt



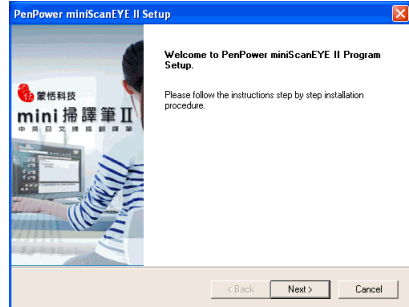
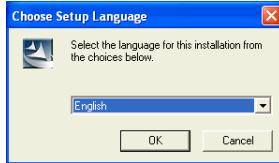
Function button:

When scanning words, the function button can be used as Enter function. It also works as checking next word in the Penpower Transeye.

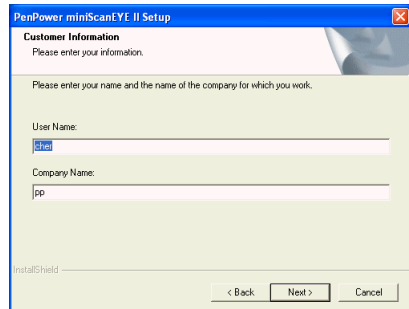


2.3 Software Installation

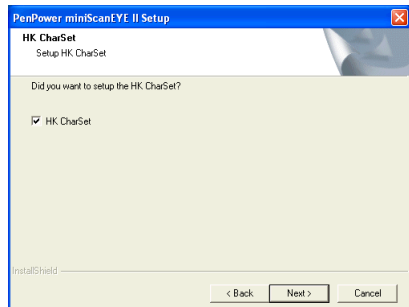
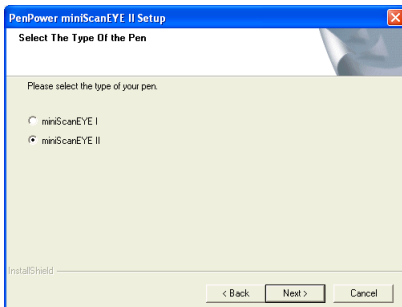
1. Insert the Penpower mini Scaneye II setup cd into your cd-rom drive. If the computer does not auto-run the cd, you can go to D:\setup.exe where D: (may not be D: on your computer) is your cd-rom. Then Select an installation language and click OK to install. Then click on Next to continue.



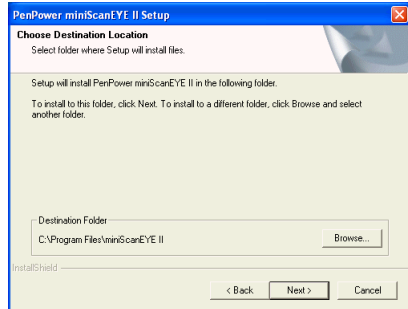
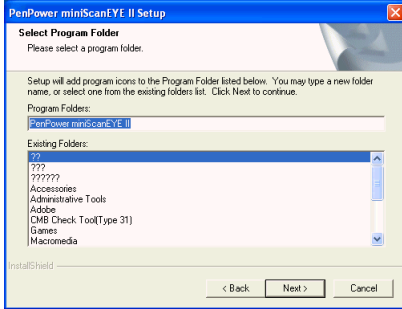
2. Key in your user name, company name and click Next to continue.



3. Please select the type of the miniScayEYE II, then click Next to continue.
4. Please choose to installtion the Hong Kong characters or not, then click Next to continue.



5. Choose the destination folder to install the software. This is usually left as default.
Click Next to continue.
6. Choose the folder that you want to install mini ScanEYE II to in Program Files. This is usually left as default. Click Next to continue.



7. The installation process will run and it will prompt you to restart the computer when the installation process is finished. Tick Yes, restart computer now and click on Finish to end the installation.



2.4 Hardware Installation

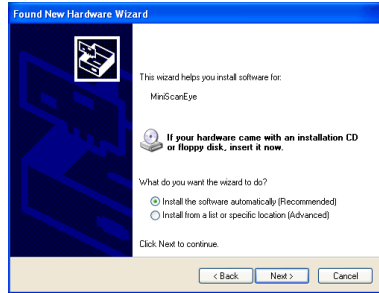
1. Plug in the mini ScanEYE II into your computer's USB port and a window will appear, welcoming you to the hardware installation wizard. Select [No, not this time] and click Next to continue.



Note: Some computers may shut down accidentally after connection. This is due to lack of power to support several USB devices. To avoid this problem, connect your mini ScanEYE and other USB devices to an extra-powered USB hub.

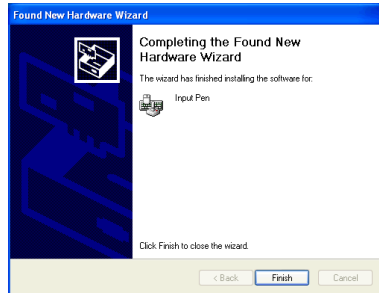


2. Select [Install the software automatically] and click Next to continue.



5. Click on Finish to end the installation.

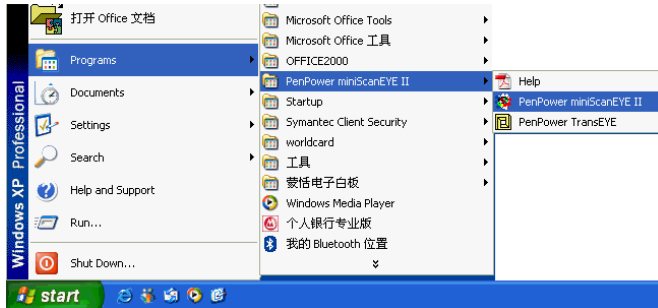
Notes: When first time execute mini ScanEYE II, a finding mini ScanEye hardware message will appear. Click Next to continue.



Chapter 3 Character Input

3.1 Open Penpower mini ScanEYE II

1. Go to Start/Programs/Penpower miniScanEYE II /Penpower miniScanEYE II to start the program.



2. After starting the program, you will notice an icon appearing beside your clock as illustrated.



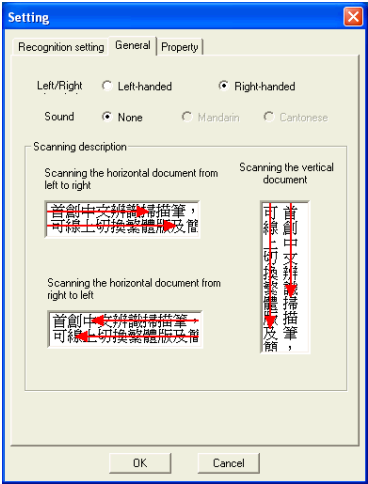
3. Open any word processor (i.e Microsoft Word or Wordpad) and place your cursor in there as usual before you start typing.
4. Place the desired document to be scanned on the table and run your pen along the characters.
5. The characters that the pen has passed through will be recognized and the results will be directly passed into your desired word processor.
6. Click on the mini ScanEYE II icon in the taskbar beside the clock and click on exit to close the mini ScanEYE II software.



3.2 Scan Direction

mini ScanEYE II must be used to scan the characters in a consistent direction, any changes to the direction will cause inaccurate recognition results.

1. Click on the mini ScanEYE II icon on your taskbar beside the clock and go to the first option, which is the settings.
2. Go to the General tab and you will be able to change the configuration settings according to how you hold the pen and the direction which you want to scan.



3.3 Scanning Vertically Aligned Text

When scanning vertically aligned text, please scan the text in top to bottom fashion and have the characters centered at the middle of your pen as indicated by the centre marker line.



3.4 Scanning Horizontal Text

When scanning horizontal text, you can choose the left-hand or right-hand option and please the pen on the text, moving from left to right or right to left depending on the option you have set previously.



Right hand: Scanning from left to right or Scanning from right to left



Left hand: Scanning from left to right or Scanning from right to left.

Note: Penpower mini ScanEYE II is able to scan and recognize one row of characters at any time, please place the pen in such a way that the centre marker is at the centre of the character.

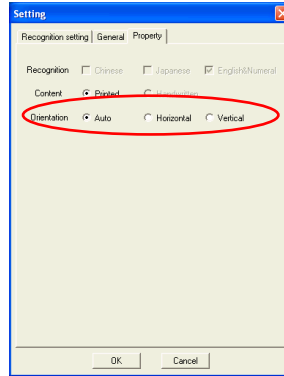
3.5 Scanning Horizontal or Vertically Aligned Text

When you install the Penpower mini ScanEYE II, the default setting for the text direction is detect automatically. However, you can manually set the desired text direction of your choice and start scanning too. You can still leave it at default being detected automatically but however, as mini ScanEYE II will need to detect the text direction, scanning speed will be slower too.



If you know that all your text is in a certain direction, you can set the mini ScanEYE II to scan in only one direction based on the setting just discussed: Horizontal or Vertical.

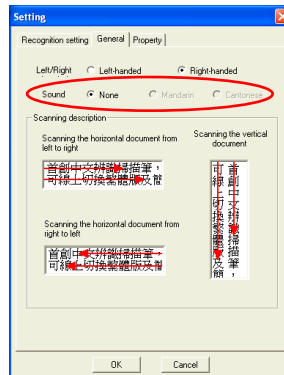
1. Click on the mini ScanEYE II icon on your taskbar by the clock and click on the first option, which is Settings.
2. Go to the Property tab and choose your desired text direction under Orientation.



3.6 Reading Aloud As You Scan

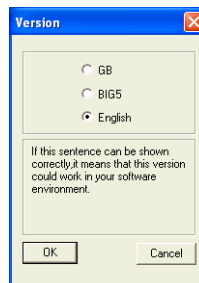
Every time a character has been recognized, mini ScanEYE II will pronounce that character either in Mandarin or Cantonese.

1. Click on the mini ScanEYE II icon in your taskbar and go to Settings.
2. Go to General and you will see an option called Sound, where it allows you to choose between None, Mandarin or Cantonese. Click OK to apply the new settings.



3.7 UI language settings

Open Version window from the main menu of mini ScanEYE II. You may choose Traditional Chinese, Simplified Chinese or English for UI language. After choosing the UI language, you may check the description. If the description does not display properly, which means your Windows OS does not support the language display.



3.8 Traditional/Simplified Chinese Recognition

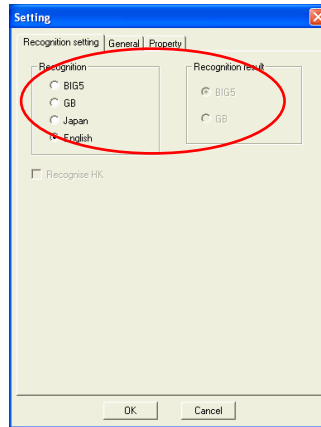
Before using Penpower mini ScanEYE II, please ensure that the style of Chinese has been configured to suit your needs. Different configuration will yield different results when scanning.

1. Click on the Penpower mini ScanEYE II icon on your taskbar beside the clock, click on Settings and select the style of BIG5 (Traditional Chinese), GB (Simplified Chinese), Japanese or English.

Recognition: Based on the text to be scanned, choose the correct recognition kernel.

Recognition Results: Select the style of Chinese in the targeted scanning results

Use English Message: Switches between English/Chinese interface.



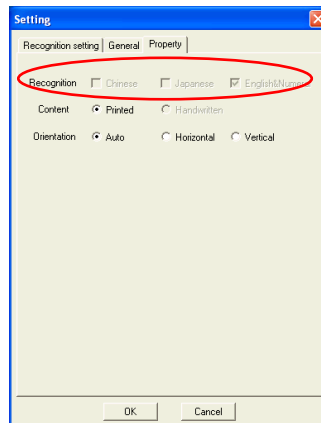
Tip: mini ScanEYE II can actually convert Traditional text on your document to a Simplified Chinese oriented result, in which you can select a different combination.

2. Go to the Property tab.

Recognition: You can select a variety of text which can be recognized, in which English & Numeral, Chinese and Japanese can be selected based on the document you desire to scan.

Content: You can select whether the text you are scanning is printed text or handwritten text.

Tip: When scanning handwritten text, the scanning results may vary according to handwriting, so the optimal recognition can be achieved when the text is properly aligned and the size must be within the scanning range of the pen.





3.9 Practise

According to what has been discussed previously, please scan the illustrated text below, in a horizontal and vertical fashion. Do not introduce abrupt changes when scanning, i.e the speed of moving your pen or scanning too fast. It will take approximately 5 seconds to complete scanning the text below.

If you have successfully scanned the text with the correct recognition results, you are now ready to put mini ScanEYE II to actual use!

蒙恬掃譯筆中文辨識掃描翻譯

蒙恬掃譯筆中文辨識掃描翻譯




- 2. Leave your cursor on the character for 1-2 seconds and a window showing a list of suggested corrections will be presented.
- 3. If the correct character appears among the list of characters presented, you can click on the character to have your current incorrect character replaced.
- 5. Lastly, notice that the wrong character has been replaced.

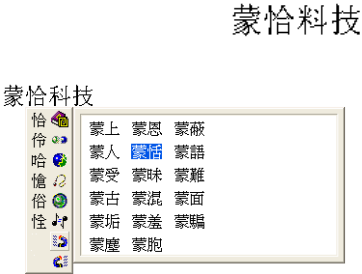



***. Pre-emptive Linking**

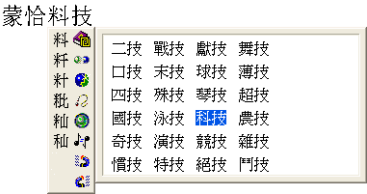
In any continuous text (2 characters), the first character is the second character's uplink, while the second character is the first character's downlink. For example 科技, where 科 is 技's uplink, while the character 技 is 科's downlink.

- 1. When using the mini ScanEYE II, the recognition results will be directly transferred to the desired application.
- 2. As shown in the illustration, the character 恬 has been recognized incorrectly as 恰 as well as 科 which also has been incorrectly recognized as 料.

- 3. Leave your cursor on the character 恰 for 1-2 seconds and a window will pop up listing possible characters. In the pop up window, click on the magnet which is facing left (uplink)  and you will notice another pop up window which shows you a list of combination which the system thinks are possible replacements for the resulting recognition.



- 4. Leave your cursor on the character 料 for 1-2 seconds, which will once again invoke the pop up window with the list of possible replacements. This time round, click on the magnet which is facing right (downlink)  and the very same panel will pop up again with a list of combination of characters for you to choose from.




- 5. After the correct combination, the correct resulting text will now appear in the result box.



*. Character Combination

When the strokes in a character are distanced too far from one another, they are usually recognised as different characters rather than 1 character. Now you can actually make use of the inbuilt character combination function and combine both characters into 1 single character.

Scan the characters 棟 and assuming that the result do not appear correctly, you might get 木東樑 as illustrated in the figure. As there might be some varying issues, now the character has been split into 2 different characters, being 木 and 東.


Leave your cursor on the character 木 for 1-2 seconds and a window will pop up with a list of buttons. Click on the second button  (INSERT PICTURE HERE) and you will have the separate characters combined into a single character 棟.



*. Character Split

On the contrary, when the strokes in 2 characters are too close to each other, they may be recognized together as 1 character. The character split function can be used to split the strokes into 2 separate characters.


Scan the characters 日月星辰, assuming that both the characters 日 and 月 are being recognized as 1 character, resulting in 明. As both the characters are too close to each other, they are being recognized as 1 character by the system, resulting in 明星辰.

Leave your cursor on the character 明 for 1-2 seconds and a window will pop up with a list of buttons. You can click on  (INSERT PICTURE HERE) to split up the character 明 into 2 characters, resulting in 日 and 月.




Displaying Original Form

After making changes to the results, you can check your original scan to look at the difference and look at the original text when scanned.

1. Scan the desired text and the recognition result will be directly transferred to the desired application.
2. Leave your cursor on the character for 1-2 seconds and a window will pop up with a list of buttons.
3. Hold down the third button  from the left and you will see the original text being displayed.

Punctuation in Balloon UI


Click on  (INSERT PICTURE HERE) and a panel listing of punctuation marks will be displayed accordingly, allowing you to input half shaped or full shaped punctuation marks.





蒙恬全螢幕手寫精靈

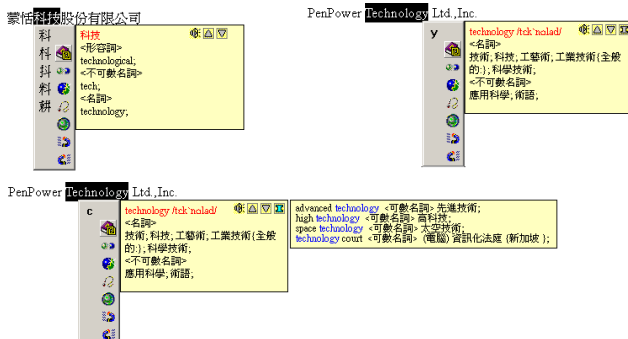


Online Translation

The Balloon Interface provides you the online translation function. Whenever you do not know the scanning Chinese or English words, you may check the translation via the online translation function.

When moving your cursor over the scanned word, a pop-up window will appear. Click  button to start online translation function. The translation window will close when moving cursor to other area.

In the translation window, you may click  button to read out the unfamiliar Chinese or English words aloud. Click  or  to check the last or next word. Click  to see phrase and further explanation.

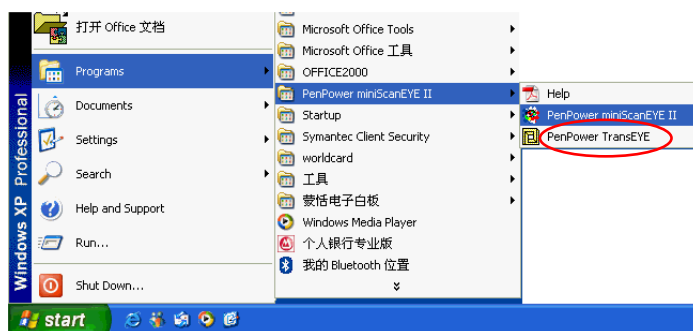


Chapter 4 Penpower TransEYE

This is a Chinese-English bi-directional translation software, which includes Chinese-English/English-Chinese dictionary lookup and Chinese-English/English-Chinese phrasal translation.

4.1 Open Penpower TransEYE

Go to Start/Programs/Penpower miniScanEYE II/Penpower TransEYE.

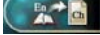


Tip: You can also start the translator from the Penpower mini ScanEYE II icon on your taskbar.






4.2 English Character Dictionary Lookup

1. Click on .
2. On the top left hand corner, enter the English word that you want to look up in the dictionary and hit Enter. The explanation in Chinese will pop up almost immediately.

There are a number of buttons which you can see the usage example or the detailed explanation.

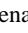



4.3 Chinese Character Dictionary

1. Click on  to enable the Chinese dictionary.
2. In similar fashion, input the Chinese character that you want to look up in the text field in the top left hand corner. Hit Enter and the system will present the explanation in English.



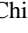

4.4 English Phrasal Dictionary

1. Click on  to enable the English phrasal dictionary.
2. In the top left hand corner, input the text to be translated and explained in the field and click on  to translate.




Tip: During English phrasal translation, avoid inputting Chinese half-shaped punctuation to increase the translation accuracy.

4.5 Chinese Phrasal Dictionary

1. Click on  to invoke the Chinese-English translation.
2. In the above frame, input the phrase or paragraph where appropriate and click on  to start the translation. The result will be displayed in the frame below.





Clicking on  will command the system read out the character to you, whereas if you are in phrasal translation mode, it will read out the phrase to you. It will start reading from the point from where you place the cursor right to the end of the phrase.

In the translation software, you will notice other buttons which perform the following functions as illustrated below:



: Back/Forward buttons let you

check the meaning of the next character

or the previous one.



: Cut function



: Copy function



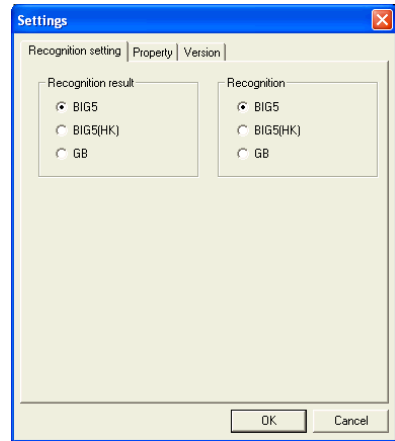
: Paste function



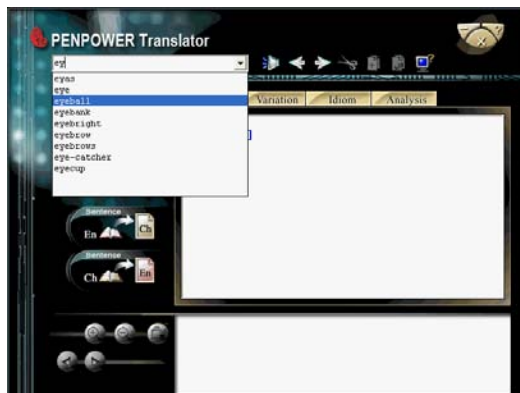
: Delete function



: System Settings. This will invoke the same settings window that you have seen previously.



Due to the pre-emptive nature of the Transeye, you do not need to input the characters completely. Hitting Enter will usually let the system complete the word and translation for you.








4.6 Translating Scanned Input

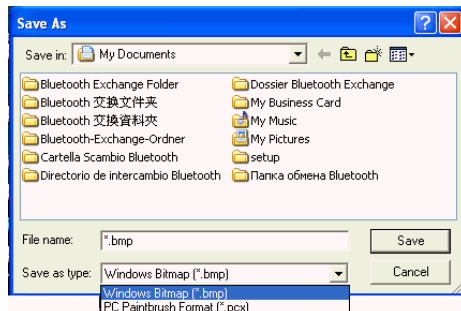
Other than checking up on words or phrases through the use of keyboard, you can also make use of mini ScanEYE II to input the phrase for you, while the original text will be displayed at the bottom of the window for you.




When translating a single word, inputting the word with Scaneye will let you input the complete phrase. Every push on the button on the pen will incur the translation on the next word and so forth.

Clicking on the Next button  or the Back button  will allow you to scroll through to the next or previous character in Transeye's dictionary database, allowing you to look up on more meanings on the word's variants.

You can zoom in  or  out by clicking on , adjusting the size of your scanning proportionally. You can also save the scan as a picture by clicking on . When prompt for a directory to save it in, type the filename of your choice and choose the folder to save the picture in.





You can also translate the whole paragraph of the scanning you have made with mini ScanEYE II by clicking on , which will in turn translate whatever you have scanned into the opposite language. You can perform the translation phrase by phrase, or choose to have the translation done to the whole paragraph at one time.



You will not be able to use the Back  / Next  buttons when you are in phrasal translation mode.

Penpower mini ScanEYE II User Manual

Edition: Released in July, 2006

Penpower Technology Ltd.,

