

Penpower Chinese Expert

(Pen Scanner)

User Manual

Version: V2.0

Edition: Released in July, 2008

Penpower Technology Ltd.

Software User License Agreement

You are licensed to legally use this software program (“the Software”) by Penpower Technology Ltd (“Penpower”) under this license agreement (“The Agreement”). If you do not agree with any of the provisions in this Agreement, please do not install, copy or use the Software. By using the Software, you are deemed to fully understand and accept the provisions of this Agreement.

1. Intellectual Property

All intellectual property rights in the Software, together with all information and documents included in the packaging for the Software (including but not limited to copyrights), are property of Penpower, and are protected by relevant laws and regulations.

2. License to Use

You are authorized to use the Software on one (1) single computer only. You may not use the Software on any other machines other than the said single computer.

3. Authority to Copy

The Software and all documents included with the Software, and copyright thereof, are property of Penpower. You are licensed to make one (1) copy of the Software for your personal backup purposes. All other acts of copying are strictly prohibited.

You may not sell, lease, disassemble, reverse engineer, copy, translate, adapt or derive the Software, or obtain the source code of the Software by any other means. You may not use the Software for any purposes other than those permitted under this Agreement.

4. Business Users

If you need to install or use the Software on more than one (1) computer, please contact Penpower or our local distributor to purchase a license for the additional use.

5. Liability

You agree to indemnify Penpower against all losses, costs, debts, settlement payments or other expenses (including but not limited to attorneys fees) arising from your breach of this Agreement, and you agree to compensate Penpower for all of the abovementioned damages.

6. No Warranty

Effectiveness of a packaged software in handling information is closely related to its software and hardware environment. The Software is published following careful development and product testing by Penpower, but Penpower is not able to conduct tests based on all possible combinations of software and hardware environment. Therefore, Penpower is unable to promise nor warrant that there will be absolutely no risk of loss or damage of information, or any other kind of loss, during installation and/or execution of the Software. You must be fully aware of your risks in using the Software.

Penpower will provide you with the Software and support services in respect of the Software to the maximum extent permitted by law. However, Penpower does not warrant that the Software and information included in the package of the Software contain no defects or errors. Penpower is not liable for any indirect, special or incidental loss arising from the Software, including but not limited to loss of profits, damage to business reputation, cessation of work, hardware malfunction or damage, or any other commercial damage or loss arising from commercial use of the Software.

7. Limitation of Liability and Damages

The maximum amount of compensation payable by Penpower, in respect of any damage incurred by you for any reason under this Agreement, is limited to the amount you have already paid to Penpower in respect of the Software.

Under no circumstances will Penpower be held liable for the possibility of loss, notwithstanding Penpower may be aware of the possibility of such loss.

8. Prohibition Against Sublicense

You are prohibited to assign the license in respect of the Software granted to you under this Agreement, or to grant a sublicense to another person.

9. Jurisdiction

With regards to any disputes arising from this Agreement, Penpower and you agree that the court having jurisdiction over the business location of Penpower will be the court in the first instance.

10. Miscellaneous

In the event that any provision of this Agreement is found to be invalid at law, such invalidity will not affect the validity of any other provisions, or the legal enforceability of such other provisions.

In the event that the Software cannot be executed under conditions of normal use, due to any damage to the original disk/s, Penpower will replace the disk/s free of charge.

CONTENTS

Chapter 1 Product Features.....	1-1
1.1 Penpower Chinese Expert.....	1-1
1.2 Hardware Specification.....	1-2
1.3 miniScanEYE II.....	1-3
Chapter 2 Installation.....	2-1
2.1 System Requirements.....	2-1
2.2 Installation.....	2-1
2.2.1 Driver Installation.....	2-2
2.2.2 Penpower Chinese Expert Installation.....	2-4
2.2.3 miniScanEYE II Software Installation.....	2-6
Chapter 3 Using Chinese Expert.....	3-1
3.1 Starting Chinese Expert	3-1
3.2 Introduction to the Main Interface.....	3-2
3.2.1 Chinese-English Translation Interface.....	3-2
3.2.2 Sentence Segmentation Interface.....	3-3
3.3 File Management.....	3-5
3.3.1 New Article.....	3-5
3.3.2 Opening an Existing File.....	3-6
3.3.3 Closing an article.....	3-6
3.3.4 Abstract.....	3-7
3.3.5 Save File.....	3-8
3.3.6 Save as New File.....	3-8
3.3.7 Close Chinese Expert.....	3-8
3.4 Sentence Segmentation.....	3-9
3.4.1 Automatic Sentence Segmentation.....	3-9
3.4.2 Basic Chinese Learning Functions in the Sentence Segmentation Pane.....	3-12
3.4.3 Build Phrase Manually.....	3-14
3.4.4 Redo Phrase Segmentation.....	3-16
3.4.5 Print.....	3-16
3.5 Auto Insert all Phrases.....	3-17
3.6 Phrase Database Management.....	3-19
3.6.1 Phrase Search.....	3-20

3.6.2 Speech Practice:	3-21
3.6.3 Character Tracing	3-22
3.6.4 Listen to Pronunciation	3-22
3.6.5 Recording	3-22
3.6.6 Add Phrase	3-23
3.6.7 Edit Phrase	3-24
3.6.8 Delete Phrase	3-24
3.6.9 Export	3-24
3.7 Pronunciation Practice	3-25
3.7.1 TTS Speech	3-25
3.7.2 Recording	3-25
3.8 The Translation Function	3-26
3.8.1 Phrase Translation Tip Display	3-26
3.8.2 Lookup Phrase Translation in Dictionary	3-26
3.8.3 Manual Translation	3-27
3.8.4 Machine Translation of Whole Sentence or Article	3-28
3.9 User defined dictionary	3-30
3.10 Settings	3-32
3.10.1 Language Setting for the PCE Interface	3-32
3.10.2 Font Size Setting	3-33
3.10.3 English-Chinese Dictionary Setting	3-33
3.10.4 Bidirectional conversion of traditional and simplified Chinese Setting	3-33
3.10.5 Word segmentation Setting	3-33
3.10.6 Speed of Speech Setting	3-33
3.11 Re-edit Article	3-34
3.12 PCE Share	3-35
3.13 Language Settings for English Environments	3-36
3.13.1 Setup Instructions for Windows 2000 English Operating Systems	3-36
3.13.2 Setup Instructions for Windows XP English Operating Systems	3-37
3.14 Penpower VoiceReader	3-38
3.14.1 Use Penpower VoiceReader	3-38
3.14.2 Reading Setting	3-38

Chapter 4 Using miniScanEYE II.....4-1

4.1 Start Penpower miniScanEYE II	4-1
4.2 Scan Direction	4-2

4.3 Scanning Vertically Aligned Text.....	4-2
4.4 Scanning Horizontal Text.....	4-3
4.5 Automatic/Manual Settings for Text Direction.....	4-4
4.6 Reading Aloud as You Scan.....	4-4
4.7 Interface language settings.....	4-4
4.8 Traditional/Simplified Chinese Recognition.....	4-5
4.9 Practice.....	4-6
4.10 Using Balloon UI.....	4-7
4.10.1 Correct a Specific Character.....	4-7
4.10.2 Displaying Original Form.....	4-10
4.10.3 Online Translation.....	4-11

Chapter 5 Penpower Assistant Tools.....5-1

5.1 Input Tools.....	5-1
5.1.1 Phonetic Input Tool.....	5-1
5.1.2 Keyboard Input Tool.....	5-2
5.1.3 Dictionary Input Tool.....	5-2
5.1.4 Symbol Input Tool.....	5-2
5.2 Penpower Translator.....	5-3
5.2.1 English Words.....	5-3
5.2.2 Chinese Characters.....	5-4
5.2.3 English Article Translator.....	5-4
5.2.4 Chinese Article Translator.....	5-4
5.2.5 Translating Scanned Input.....	5-5

Chapter 1 Product Features

1.1 Penpower Chinese Expert

Penpower Chinese Expert provides a comprehensive Chinese learning environment by immersing you in a Mandarin listening and speaking environment. Penpower Chinese Expert lets you learn Mandarin from any source including web sites, books, newspapers and magazines.

- **Listening comprehension.**

We employ the latest TTS (Text To Speech), and intelligent syntax technology, so you can listen to the correct pronunciation of single characters, phrases, or sentences. Penpower Chinese Expert can also record pronunciation from real people. You can hear real pronunciation at any time.

- **Reading**

Have trouble reading books, newspapers or magazines on hand? Scan them into PC with our pen scanner, our software will show you everything about the unknown Chinese characters such as their pinyin/zhuyin, their radicals, their total number of strokes, and their meaning in English.

- **Speaking**

With our speech recognition technology, you can practice speaking Chinese phrases or taking quiz with your PC and be confident that you will sound more and more like a native Chinese speaker after each session.

- **Writing**

We will show you how to write any Chinese character in the correct stroke order. We also provide you with several different inputting methods for your composing pleasure: hanyu pinyin, zhuyin or strokes.

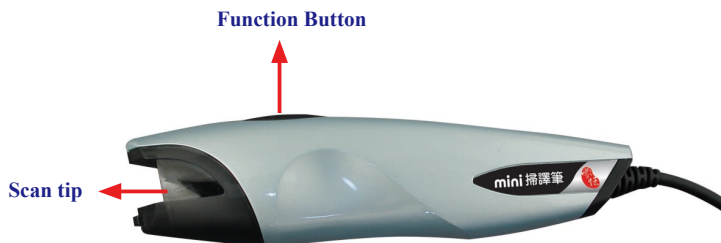
- **Translation**

We use a state-of-the-art machine translation module for your exploration of Chinese and English. You can translate between Chinese and English by word, phrases or whole sentences.



1.2 Hardware Specification

- Dimensions: 131mm x 31mm x 19 mm
- Weight: 45g (excludes USB cable)
- Interface: USB 2.0
- Scanning speed: 15 cm/sec
- Character size: 5-22 pt



* Function button:

When scanning words, the function button can be used as **Enter**. It also works to Check the next word in the Penpower Transeye.

1.3 miniScanEYE II

Chinese/English/Japanese Scan and Translation Pen

Penpower mini ScanEYE II, the best input device, scans and recognizes Traditional Chinese, Simplified Chinese, English and Japanese into your computer via the USB interface. Whenever you come across any particular words or sentences that you do not understand, mini ScanEYE II will scan and translate them for you.

With an ergonomic design, the brand new mini ScanEYE II provides a comfortable handle that fits all left-handed and right-handed users. Scan away effortlessly with the transparent scan tip. Whatever you see you scan.

Features

- **A brand new ergonomic design**

Has a comfortable handle that fits all left- and right-handed users. Scan away effortlessly with the transparent scan tip. What you see you scan.

- **The best input and translation device**

Connects to the computer through the USB port and is bundled with 3-in-1 functionality scanning, recognition and translation. The scanner easily recognizes and translates both horizontal and vertical characters.

- **Huge recognition boundary**

Recognizes 13060 Traditional Chinese characters, 6763 Simplified Chinese characters, 4184 Hong Kong characters, 3580 Japanese characters, English words, numbers and punctuation.

- **Multiple language recognition system**

Adjustable multiple language recognition system provides Traditional Chinese, Simplified Chinese, Hong Kong characters, English and Japanese recognition kernels.

- **Balloon interface**

Balloon interface pops up and provides an online translator, pronunciation, candidate words and related words whenever you need. All scan results directly transfer to the desired application.

- **Spell correction and pre-emptive computing**

Spell check feature predicts characters while correcting alignment now empowers you with a more accurate scanning flow.



- **Continuous scanning and recognition**

Multi-thread architecture allows you to scan continuously without pause while recognition is being done on the fly.

- **Bi-directional Chinese to English document translation**

Translate phrases or characters from English to Chinese or vice versa and have your complete Chinese document translated into English right away, with a read back function that reads your document to you aloud.

Chapter 2 Installation

2.1 System Requirements

- Pentium II 300 CPU or above
- 128MB of RAM
- 220MB of available hard disk space
- Windows 2000/XP/Vista 32 bit
- USB port

2.2 Installation

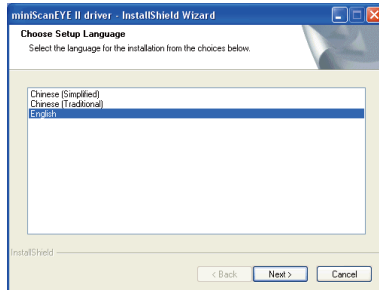
Insert Penpower Chinese Expert (PCE) setup CD into the CD-ROM drive and the system will automatically start the setup. You must run the **Driver Installation** program first. The setup program will guide you through the installation of Penpower Chinese Expert or mini ScanEYE II.



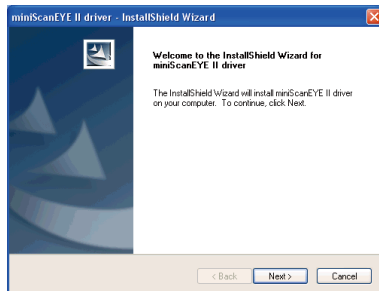


2.2.1 Driver Installation

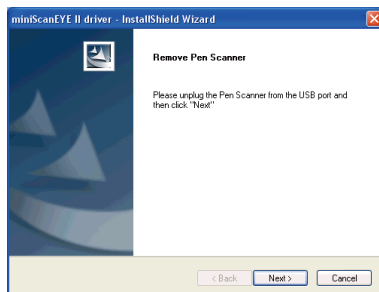
1. Please click **Driver Installation**. Select an installation language and click **Next**.



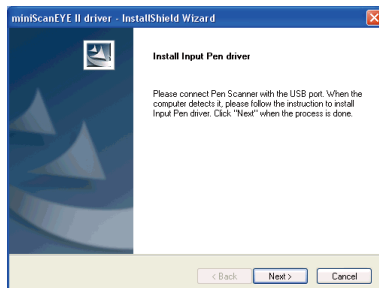
2. Click **Next** to continue.



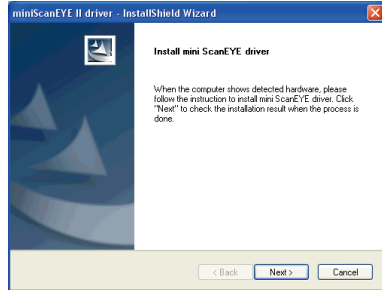
3. Make sure the pen scanner is not connected to the USB port and then click **Next**.
4. Connect pen scanner with the USB port. When the computer detects it, follow the instruction to install Input Pen Driver. Click **Next** when the process is done.



Note: Some computers may shut down accidentally after connection. This is due to a lack of power to support several USB devices. To avoid this problem, connect your miniScanEYE and other USB devices to an extra powered USB hub, or remove other USB devices before connecting mini ScanEYE.

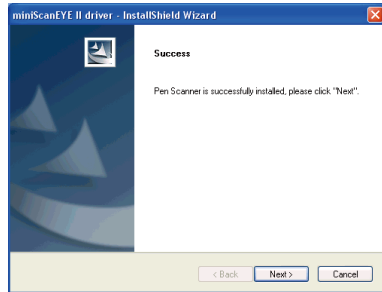


- When the computer shows detected the hardware, follow the instructions to install mini ScanEYE II driver. Click **Next** to check the installation result when the process is done.

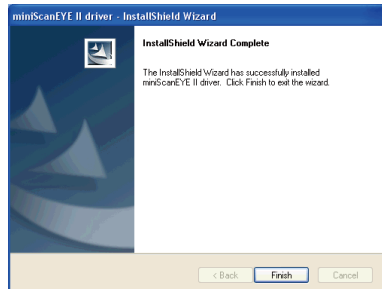


Note : If the driver file path can not be found, assign the driver path below manually. D:\Pen Scanner Drivers. (D:\ can be substituted with your CD-ROM drive's location.) Then click OK. The driver will be installed successfully.

- When the driver is successfully installed, click **Next** to continue.



- Installation process is finished. Click **Finish** to exit the wizard.

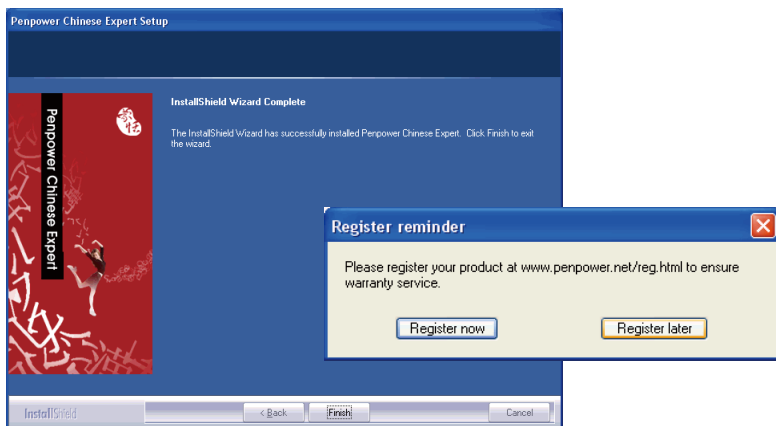





2.2.2 Penpower Chinese Expert Installation

Select **Penpower Chinese Expert**. Select an installation language and click **OK** to install. Follow the instructions on screen and carry out the installation process as directed.





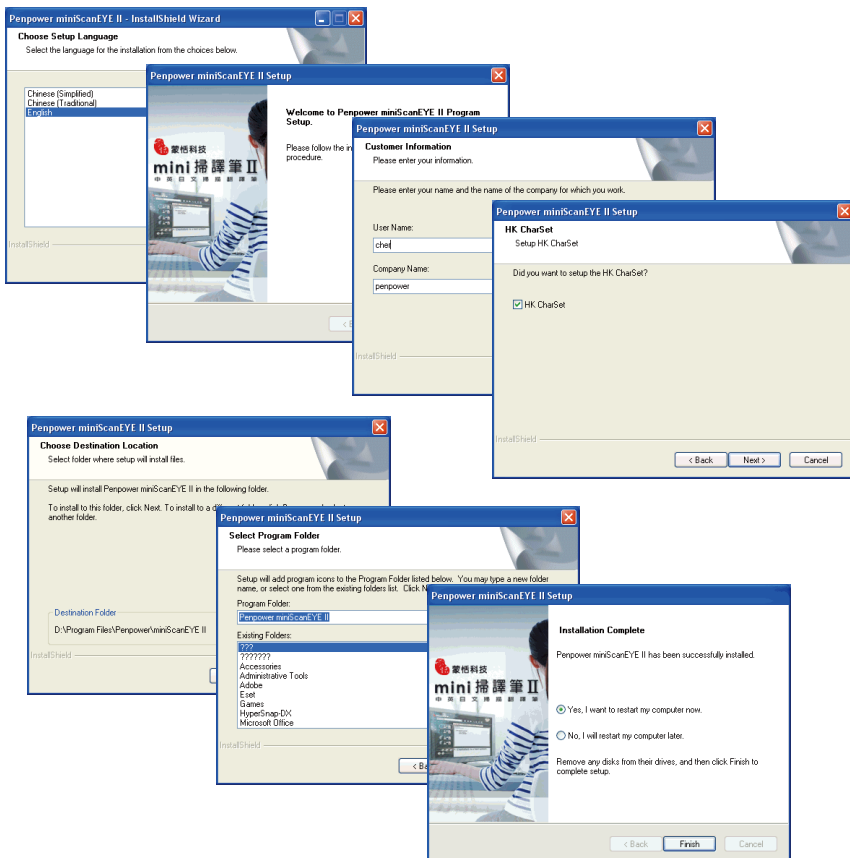
After installation process, there will be a shortcut  on the desktop. You can use this shortcut to start Penpower Chinese Expert.



2.2.3 miniScanEYE II Software Installation

While the Penpower Chinese Expert installation is finished, the installation for mini ScanEYE II runs automatically. You can select also select **mini ScanEYE II** to install mini ScanEYE II. Please select the language version you want to install and then click Next. Follow the instructions on screen and carry out the installation process as directed. When installation is completed, restart your computer.


Note: During installation, you can choose to install the HK character set, so mini ScanEYE II can recognize Hong Kong character.



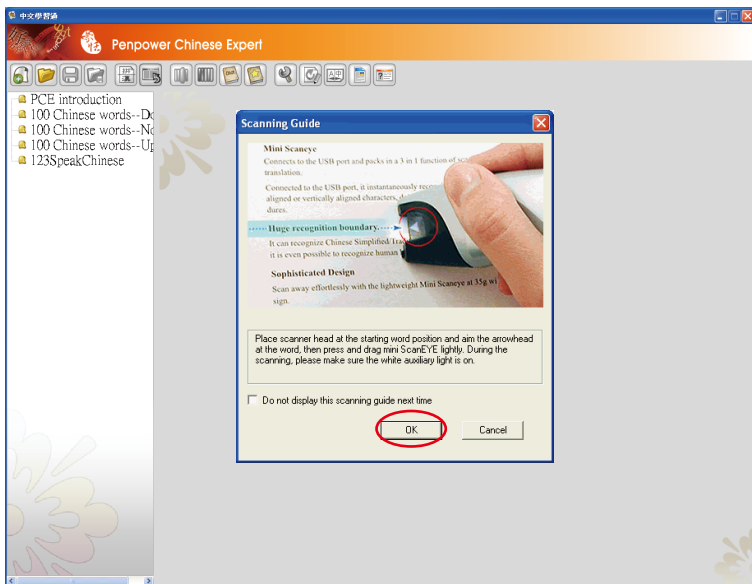
Chapter 3 Using Chinese Expert

3.1 Starting Penpower Chinese Expert

Note: Before installing Penpower Chinese Expert on the Windows 2000/XP English operating system, you must enable the Traditional or Simplified Chinese encoding support under Regional and Language Options on the Control Panel. The process for setting up Chinese language support is slightly different for Windows 2000 and Windows XP. See “Section 3.13 Language Settings for English Environments” for details.

After the Chinese Expert software is installed, there will be a new  shortcut on the desktop. Double click this icon to start the Penpower Chinese Expert. Alternatively, click the **Start** button, and then point to **Programs**. Point to **Penpower Chinese Expert** and then point to Penpower Chinese Expert.

When Chinese Expert is started, the mini ScanEYE II starts as well. When using the mini ScanEYE II for the first time, a scanning tutorial will appear to show you how to use the ScanEYE correctly.

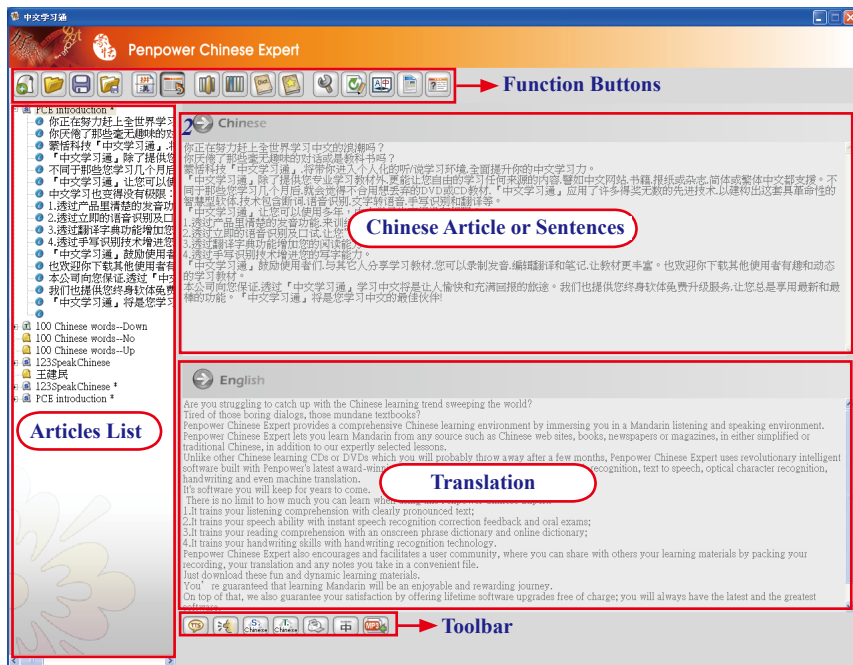


Note: When Chinese Expert is started for the first time, the articles “PCE introduction” and “100 Chinese words” appear by default.



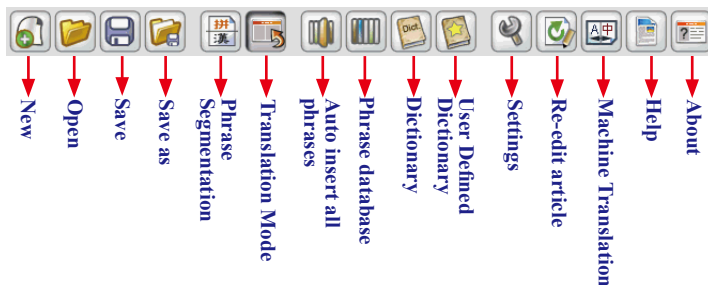
3.2 Introduction to the Main Interface

3.2.1 Chinese-English Translation Interface

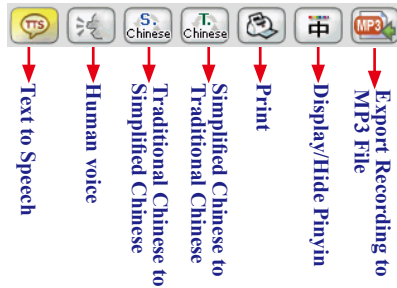



Note: The English pane displays the machine-translated content and is provided for reference only. Click the individual sentence headings on the left to open them in the Chinese pane. You can also edit the translation in the English pane directly.



Function Buttons:






Toolbar



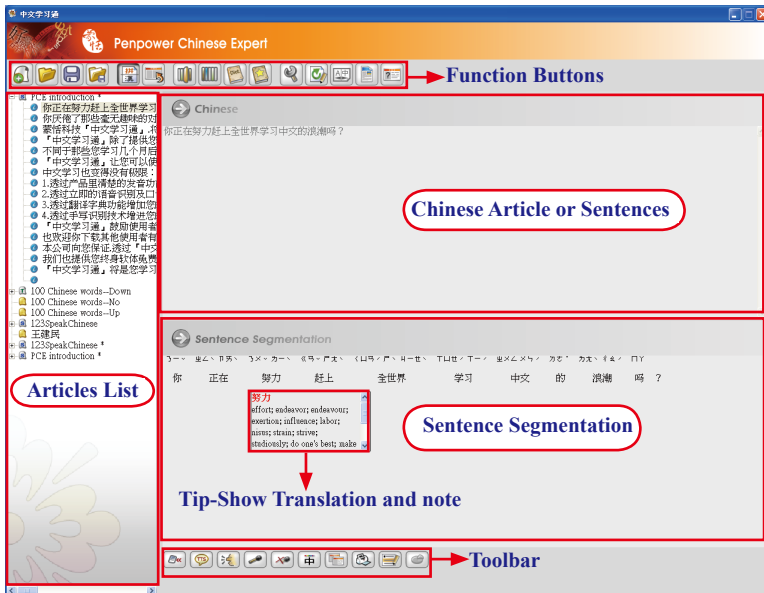
Click the **Text to speech** button  to hear the Chinese in the **Chinese** pane. Press the button to stop.

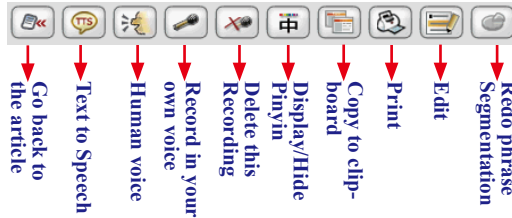
Click **Human Voice**  to hear a human voice that has been recorded previously. Click the **Human Voice** button  again to stop.


Click either **Traditional Chinese to Simplified Chinese**  or **Simplified Chinese to Traditional Chinese**  to convert the Chinese characters to traditional Chinese or simplified.



Press the **Export Recording Audio File to MP3 File** button  to export all real-voice recordings, enabling users to listen to the recordings anytime.



3.2.2 Sentence Segmentation Interface




**Toolbar:**


Click the **Text to speech** button  to hear the Chinese in the **Chinese** pane.


Press the button to stop. Click **Human Voice**  to hear a human voice that has been recorded previously. Click the **Human Voice** button  again to stop.


Click the **Record in your own voice** button  to turn on the **Recorder**. Click the **Delete this recording** button  to delete the recorded file.

Press **Display/Hide Pinying** button  to display or hide the Pinyin in sentence segmentation pane.

Press the **Copy to Clipboard** button  to convert all content in “Sentence Segmentation” to video files. Save the files onto the clipboard, and then paste them into any editing software such as Word, Excel, Paint, etc.


Click **Print**  to print the segmented article or sentence in “Sentence Segmentation” area.


Press **Re-Edit** button  to launch the “Re-Edit” dialog box and edit any character in the sentence.

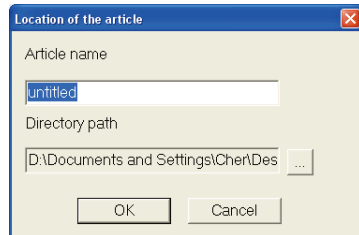
For manually constructed words that are not able to merge with other sentences, press the **Re-Segment** button  to re-segment the word (Please reference 《3.4.4》 Re-Segment).

3.3 File Management

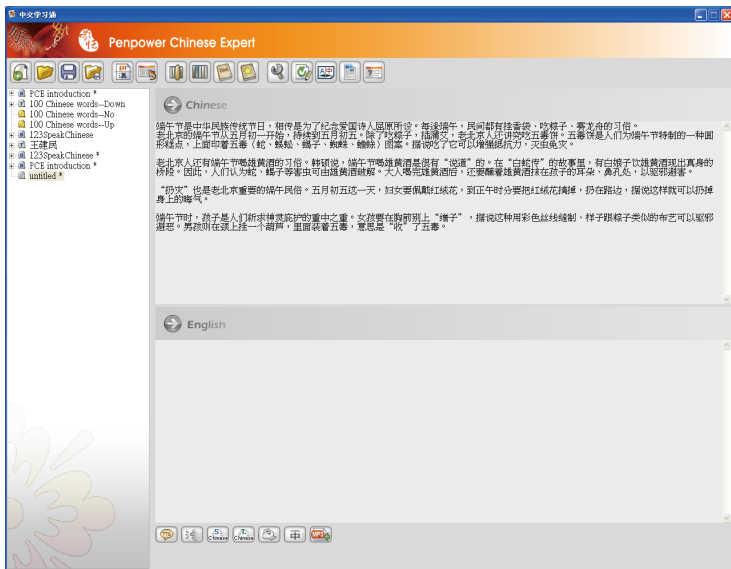
3.3.1 New Article


Click **New**  to open the **Location of the article** dialog box. Enter the article name and directory path, then Click **OK** to open a new article.

*Note: By default the new article is called **untitled** and has the **My Document** folder as its directory path. Click the  button to select a new directory path.*



Chinese content can be entered in the **Chinese** pane using **Penpower Jr.**, typed in manually, or copied from another article. For instructions on how to use the **Penpower Jr.**, please refer to **Chapter 4 Using Penpower Jr.**




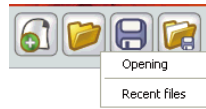
Note: When content is added, an asterisk () is appended to the article name. The asterisk indicates that the article has been modified and has not yet been saved. Click the **Save** button  to save the article and the asterisk disappears.*

*Tip: If you open new article, the **English** field is empty, if you need translation, please reference 3.8.4 Machine Translation of Whole Sentence or Article.*

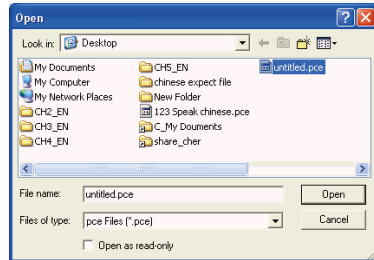


3.3.2 Opening an Existing File

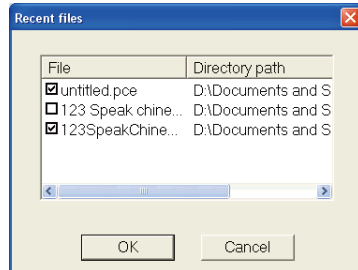
Click the **Open** button  to open an existing file or recent files.



If you select **Open**, the **Open** dialog box appears. Select one or more .pce files, click **Open** to import their content into Penpower Chinese Expert.

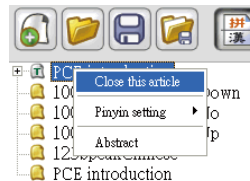






If you select **Recent files** the **Recent** files dialog box appears, listing all recently edited files. You can select multiple files at the same time and press **OK** to import all the selected files into Penpower Chinese Expert.



3.3.3 Closing an article

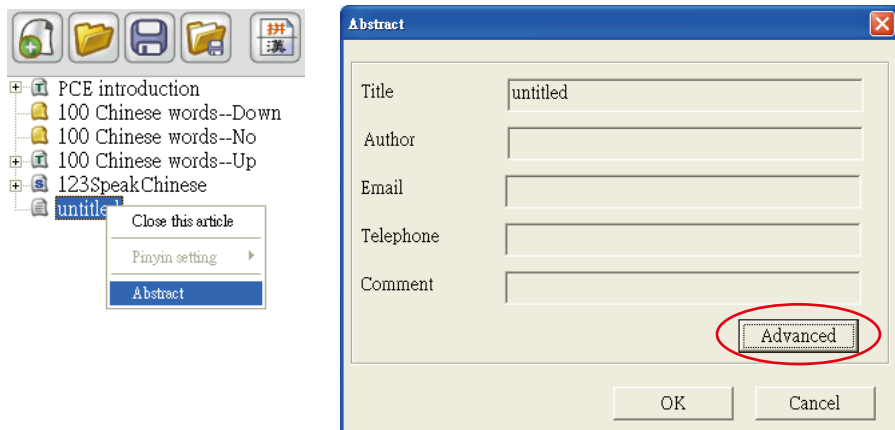
In the article pane right-click the name of the article. Click **Close this article** to close the article and clear its name from the article pane.



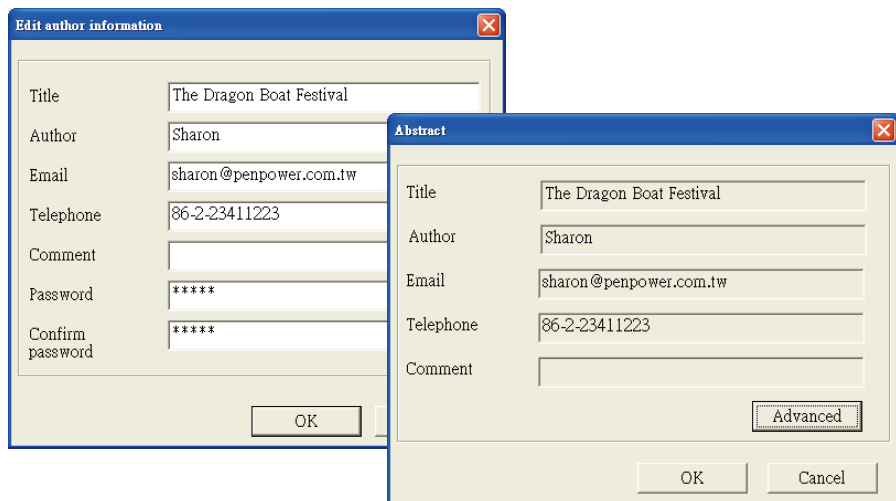
Tip: Penpower Chinese Expert (PCE) automatically detects if an article is in Traditional or Simplified Chinese based on the number of Traditional and Simplified Chinese characters in the article. For indication, it will display different images before files' names.  indicates that the PCE is not able to detect the file automatically. When an article has more Traditional Chinese characters,  will appear to indicate that the article is in Traditional Chinese. If it contains more Simplified Chinese characters,  will appear, indicating that the article is in Simplified Chinese. If the article has an equal number of Traditional and Simplified Chinese characters,  will appear.

3.3.4 Abstract

At the main menu of Penpower Chinese Expert, right-click on a desired article's name and select **Abstract** from the option list that appears. The “**Abstract**” dialog box will then launch and user can then check for information related to the author. The user can then press **Advanced** to edit the abstract's information.




In “**Edit author information**” dialog box, the user can modify article's “Title”, “Author”, “Email”, “Telephone”, “Comment”, “Password” etc. Upon completion, press **OK**. Return to “Abstract” dialog box and press **OK** again.






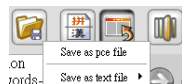
3.3.5 Save File

Modified articles that have not yet been saved have an asterisk (*) after their name to indicate that the article has been modified and hasn't been saved yet. Click the **Save** button  to save the selected file to the default folder in the .pce format. The asterisk disappears.

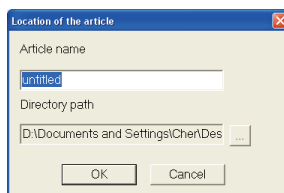
Note: The Save command saves only the currently selected file.

3.3.6 Save as New File

Click the **Save as** button  then select **Save as pce file** to open the **Location of the article** dialog box. Enter the article name and select the directory path then press **OK**. The selected article will be saved as a new file in the .pce format.




You can also click **Save as text file** to save the selected article as a new file in the (.txt) format. There are two format choices. One is **Article format** and the other is **Sentence format**.

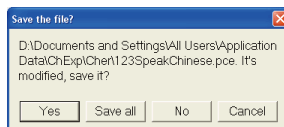


Note: If you use Hanyu Pinyin(standard tone) in Sentence Segmentation pane then save as text file, Hanyu Pinyin may be displayed as random code because of unsupported font. We therefore recommend setting up your character font such as Times New Roman to display Hanyu Pinyin correctly.

Note: The Save as command saves only the currently selected article as a new file.

3.3.6 Close Chinese Expert



Click the **Close** button  in the upper right corner to exit Penpower Chinese Expert. If there are any unsaved modified documents, you will be asked to save them one by one before exiting. Click **Yes** to save each article or **Save all** to save all modified articles.

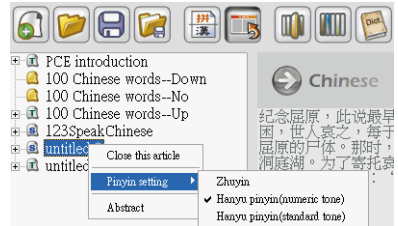


3.4 Sentence Segmentation

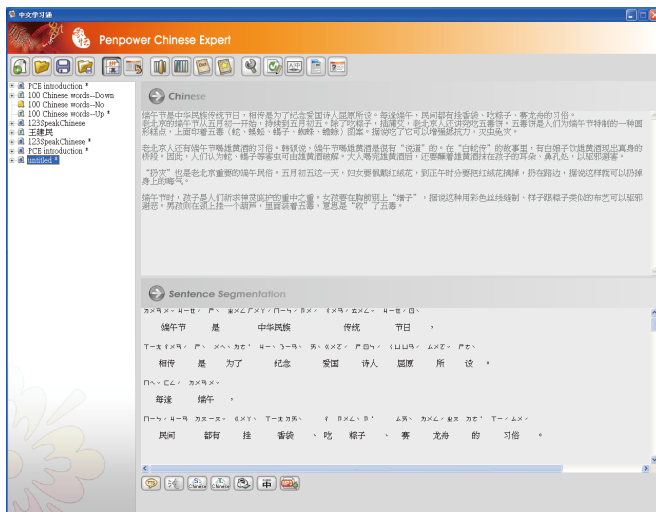
Sentences can be quickly segmented into terms and words using smart sentence segmentation technology to make it easier for you to learn words and terms or understand the meaning of a sentence.

3.4.1 Automatic Sentence Segmentation

Press the **Sentence Segmentation** button , when the button  looks indented, right-click desired article's name to launch options list. The user can change the Pinyin display format from **Pinyin Settings**. Upon completion, the software will display Chinese Pinyin in "Sentence Segmentation" in accordance to your preferred format and then complete sentence segmentation.

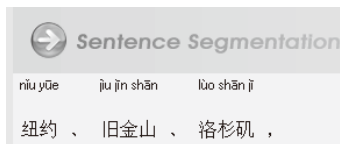


The **Pinyin Setting** can be set to **Zhuyin**, **Hanyu pinyin (numeric tone)** or **Hanyu pinyin (standard tone)**. If **Hanyu pinyin** is selected, the pinyin is displayed in the **English** pane. You can use this to learn the Hanyu pinyin expression for each character.





Selecting **Hanyu pinyin (numeric tone)** displays the Hanyu pinyin with numerals to indicate the tones as shown on the right:

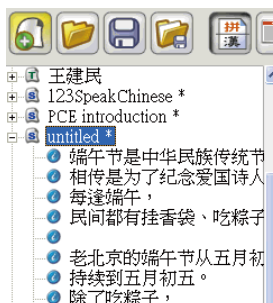


Selecting **Zhuyin** shows the Zhuyin as on the right:

Zhuyin can help you learn the Zhuyin used for each word.



Penpower Chinese Expert automatically breaks the entire article down into individual sentences. Each sentence is then indexed on the left side in the article pane. Click an individual entry to display only this particular sentence and to edit the sentence. This helps you learn Chinese one sentence at a time. You can also construct your own sentences, change partitions and make recordings.



The **Sentence Segmentation** command can separate words and terms. Separating terms from each other, words from each other and terms from words helps you learn terms and understand the meaning of the sentence.



3.4.2 Basic Chinese Learning Functions in the Sentence Segmentation Pane

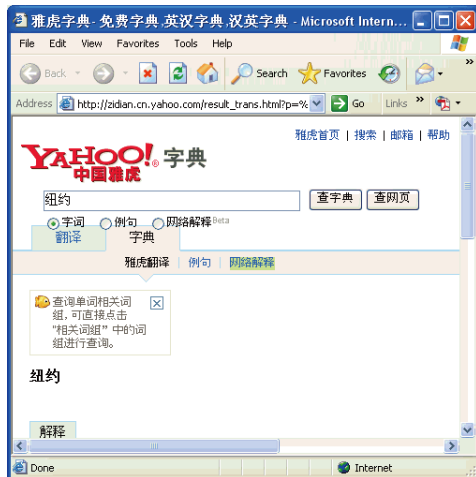
Tip-Show Translation and Note

In the Penpower Chinese Expert Sentence Segmentation pane, you can rest the cursor on any word or term to see the English translation and notes for that word or term.



Lookup Online

To look up the online translation of any word or term, rest the cursor on the word or term, right-click and then click **Search on web** to connect directly to the Yahoo Dictionary web page.

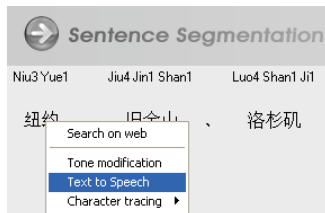


Note: If the word that a user wants to check is in Traditional Chinese, for example “爭光”, he or she will be linked to the “Yahoo! Taiwan Dictionary” website. If the word is in Simplified Chinese, for example “争光”, he or she will be linked to the “Yahoo! China Dictionary” website. If the words are written exactly the same in Traditional or Simplified Chinese, for example “昨天”, PCE will link the user to the “Yahoo! China Dictionary” website.



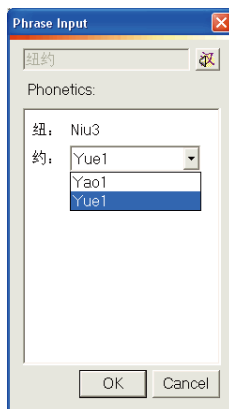
TTS Speech

Text-to-Speech (TTS) synthetic speech technology allows you to hear words on demand, speeding up the learning of pronunciation and tones. Rest the cursor on a word or term, right-click and then click **Text to speech** to hear the word or term.



Change Pronunciation

Certain words may have multiple pronunciations. 纽约, for example, has two possible tones for 约. Rest the cursor on 约 and right-click to bring up the menu. Click **Tone modification**. In the Phrase input dialog box, select a pronunciation for 约.



Show Standard Trace

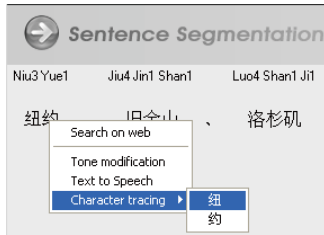
Penpower Chinese Expert supports on-demand lookup of standard writing traces for Chinese characters. These show you the proper stroke order for writing Chinese characters and helps you learn through practice.

Rest the cursor on the word or term to see the trace. For a term such as 纽约 right-click the term to open the menu. Click **Character tracing**, then the character to look up the trace for 纽. An animation of how to write the word 纽 is shown along with other details about the word.

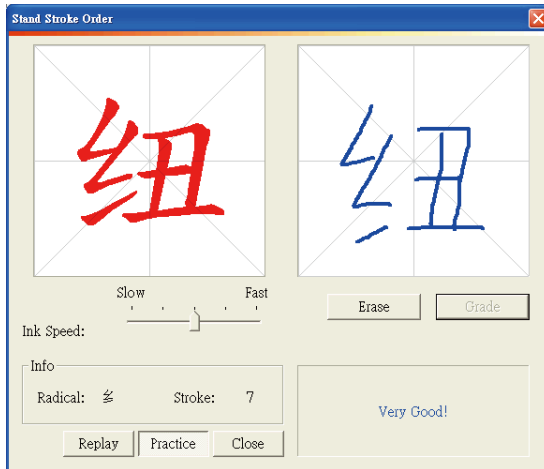
Use the **Ink Speed** slider to adjust the writing speed.

Word details show that its radical is 纟 and its stroke count is 7.

Click **Replay** to study the stroke order for the word again.



Click **Practice** to open the **Practice** dialog box where you can practice writing the word. When done, you can click **Grade** to check the recognition result. Possible comments include **Bad**, **Good**, or **Very Good**. Click **Erase** to repeat the practice session.

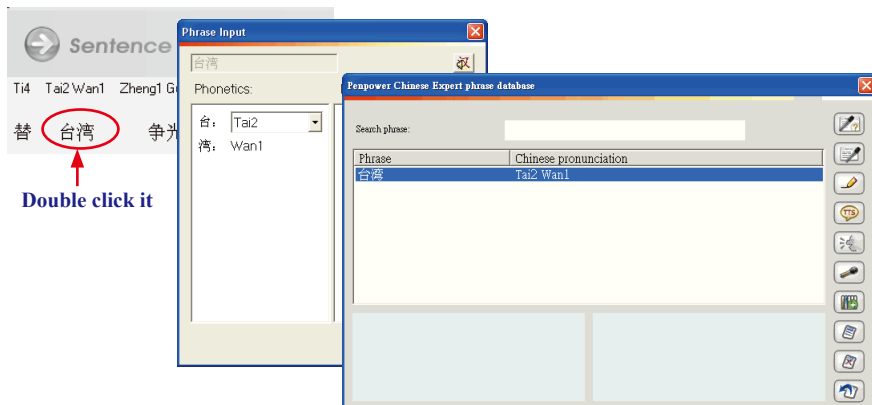




Quickly Open Phrase Database

Double-click a word or term to check the phrase database. For example, for the term 台湾 you can quickly open phrase database to check the pronunciation, meaning, note, or modify the pronunciation of this term.

Note : *If the selected phrase is not in the phrase database, the Phrase Input dialog box displays. Here you can add note and the correct pronunciation. This phrase is then added to phrase database.*




3.4.3 Build Phrase Manually

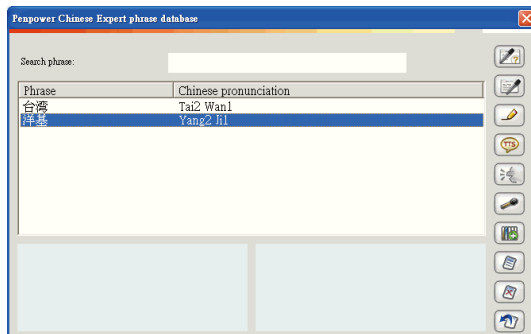
Some terms such as personal or company names may not be properly segmented. You must use the build phrase manually method to add it to the phrase database.

For example, 洋基 is the name of a baseball team, but the name is broken down into two separate words: 洋 and 基. You can build the phrase manually to combine the two into one term 洋基 and add it to the database.

Click the sentence 这里有建仔代表洋基出战天敌天使队. in the article pane. In the English pane the term 洋基 is partitioned into two separate words 洋 and 基. In the Chinese pane, select the words 洋基 and right-click. Click Build phrase to combine 洋 and 基 into one new term, 洋基.




Click the **Phrase database** button  to open the **Penpower Chinese Expert phrase database** dialog box. 洋基 is now listed in the phrases.





3.4.4 Redo Phrase Segmentation


Phrases built in one particular sentence will not be automatically combined in other sentences. Phrase building only combines words and terms in the current sentence. If the term appears in other sentences, use the **Redo phrase segmentation** command to quickly combine them all.

For example, in section 3.4.3 we constructed a new term by combining words 洋 and 基 in the sentence 这里有建仔代表洋基出战天敌天使队 and added it to the term database. When we click the sentence 终场洋基12：0大胜天使 is still two separate words and not one single term. In this situation the **Redo phrase segmentation** command is available. Simply click the  button to redo phrase segment the sentence and combine 洋 and 基 into the term 洋基.




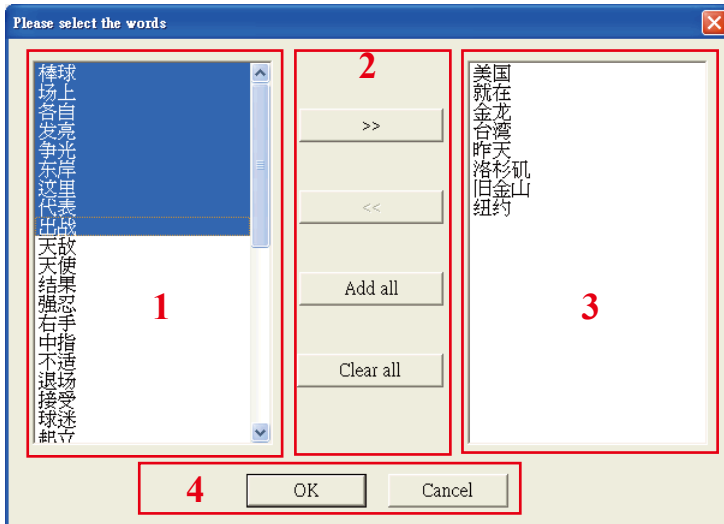
Note: Penpower Chinese Expert comes with a extensive pre-defined term database and manually constructed terms are assigned a weighting lower than terms that already exist in the database. When a manually constructed term is a part of a default term, Redo phrase segmentation can't be performed on other sentences in this article that contain this term. For example, the default system term database already contains the term 天长地久. If you manually build the term 天长 in a certain sentence so that it is now two separate terms 天长 and 地久, you won't be able to use the redo phrase segmentation command to separate 天长地久 in other sentences.


3.4.5 Print

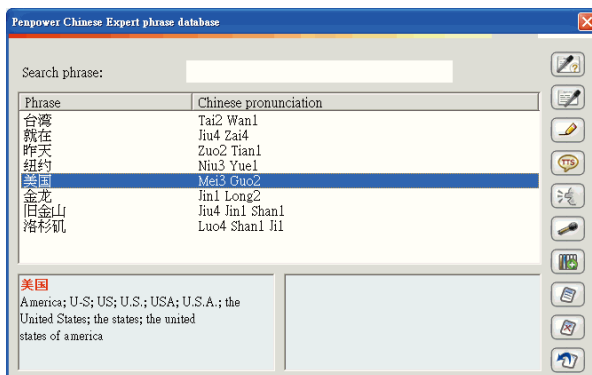
Click the **Print** button  to print the segmented article or sentence in **Sentence Segmentation** pane.

3.5 Auto Insert all Phrases

Press the **Auto insert all phrases** button , and the system will display a “Please select the words” dialog box. The user can select one word at a time, or press the **Add all** button, to import all the words on the left into the word list (self-select) on the right, then press **OK**.

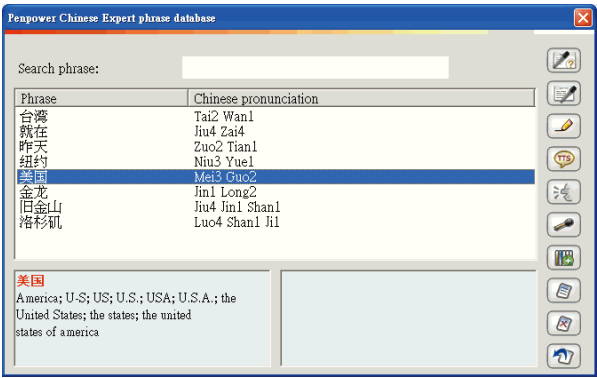


Click the **Phrase database** button ,. In the **Penpower Chinese Expert phrase database** dialog box, you can see all of phrases in the article now listed in the database.






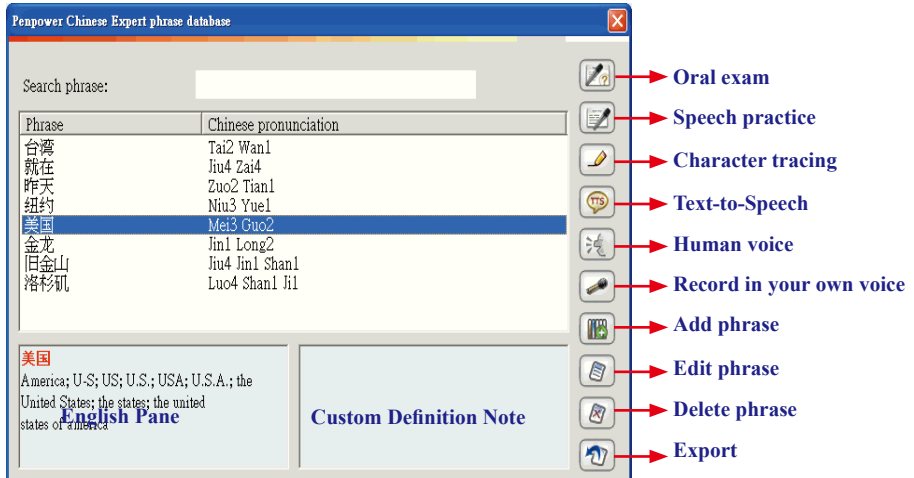
Note: The pronunciation system shown in the Chinese pronunciation area of the Pen-power Chinese Expert phrase database dialog box depends on the Pinyin settings. If Pinyin is set to Zhuyin, then Zhuyin is displayed; if set to Hanyu pinyin, then Hanyu pinyin is displayed.



Note: The phrases listed in the database apply only to the current article. All articles have their own independent database.

3.6 Phrase Database Management

Click the **Phrase database** button  to display the **Penpower Chinese Expert phrase database** dialog box.



The phrases in the database comes from one of four sources:

- Terms added using the **Build phrase** command in a certain sentence within the article. (Please refer to **3.4.3 Build Phrase Manually**.)
- Terms added through the **Auto insert all phrases** command from the current document. (Please refer to **3.5 Auto Insert all Phrases**.)
- Terms added using the **Construct New Term** command in the Chinese Expert phrase database. (Please refer to **3.6.6 Add Phrase**.)
- Terms created using the **Add Phrase** command from the Dictionary. (Please refer to **3.8.2 Lookup Phrase Translation in Dictionary**.)

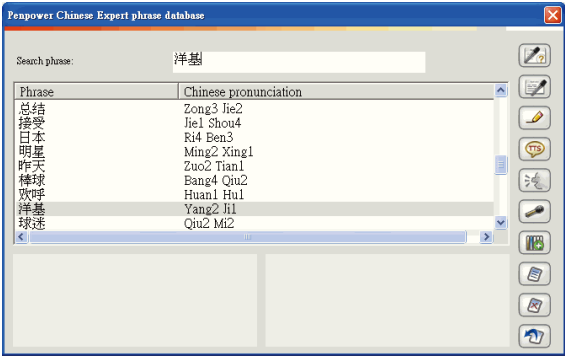
English Pane: Shows the selected phrase and its English translation.

Custom Definition Note: You can use the edit phrase or construct phrase function to add your own notes.


3.6.1 Phrase Search

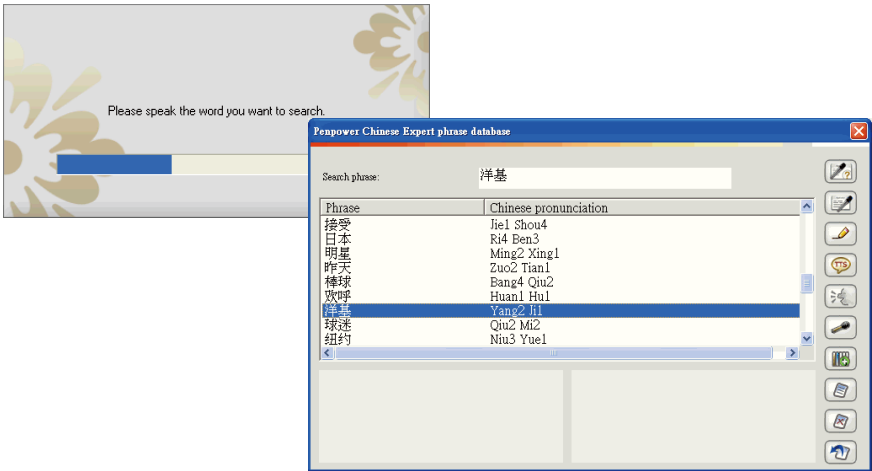
*** Text Search:**

Type the phrase to search for in the **Search phrase** box. If the phrase is in the list, after you have finished typing in the search phrase, it will be highlighted in gray. For example, after entering 洋基 then the term 洋基 is highlighted in gray.








*** Voice Phrase Search:**

Click the **Oral exam** button  and the message “**Please speak the word you want to search**” appears. Say the phrase in Chinese. If you say the phrase correctly, the phrase is displayed and highlighted in blue. For example, after saying 洋基 then the term 洋基 is highlighted in blue.

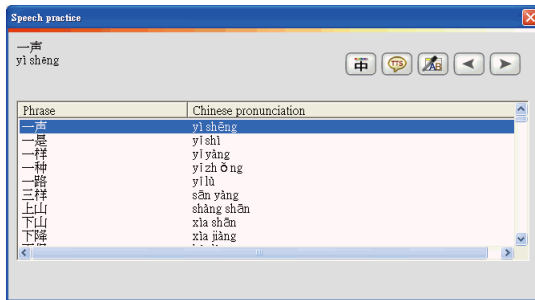


3.6.2 Speech Practice:


Click the **Speech practice** button . In the **Speech practice** dialog box.

Select a phrase and then press **Display/Hide Pinyin** button  to display or hide the Pinyin of selected phrase. Click the **Text to speech** button  to hear the Chinese in the **Chinese** pane. Click the **Voice recognition** button . The message “Please speak the word you want to search” appears. Say the currently selected phrase aloud. If pronunciation is correct, you will see “Pronunciation is correct.” If not, you’ll see “Sorry, your pronunciation is not correct, please try it again” will be shown. Click the **Previous phrase**  or **Next phrase** button  to move to the previous or next phrase and practice its pronunciation.

When the practice session is over, click **Close** button to return to the **Penpower Chinese Expert phrase database** dialog box.



3.6.3 Character Tracing

Select a phrase such as 纽约 then click the **Character tracing** button . Now click the character to lookup the trace for such as 纽. An animation of how to write the word 纽 is shown along with its stroke number and its radical. Use the **Ink Speed** slider to adjust the speed of the animation. You can click **Practice** for real-time writing practice.

For more details, please refer to the explanation in 3.4.2 Basic Chinese Learning Functions in the Sentence Segmentation Field-Standard Trace.






3.6.4 Listen to Pronunciation


You can hear pronunciations either with the **Text-to-Speech** or **Human voice** commands.

* Text-to-Speech

Text-to-Speech (TTS) pronounces words immediately to help you quickly learn the pronunciation and tone of words.

Select a term such as 洋基, then click the **Text-to-Speech** button  to listen to its TTS pronunciation.

* Human voice

If you have recorded human voice for a certain phrase or sentence, you can then choose to have it read using the **Human voice** command. For example, if you had previously recorded human speech for the phrase 洋基, click the **Human Voice** button  to hear it.






Note: For instructions on recording human speech refer to 3.6.5 Recording.

Note: You can adjust the speed of pronunciation. Refer to 3.3 Setting Speed of Speech.


3.6.5 Recording


You can add human speech for phrases and sentences for comparison with Text to speech and for further repeated practice so that you can improve the accuracy of your pronunciation.



Select a phrase such as 洋基, then click the **Record in your own voice** button  to turn on the recorder. Click the  button to begin recording. When recording is finished, click the  button to stop the recording. Click the  button to listen to the recording and then the  button to save the recording.



3.6.6 Add Phrase

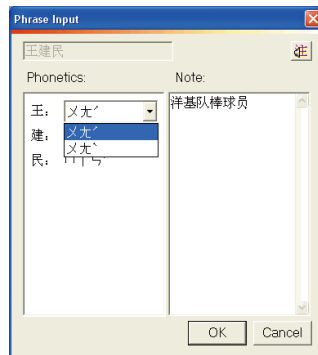
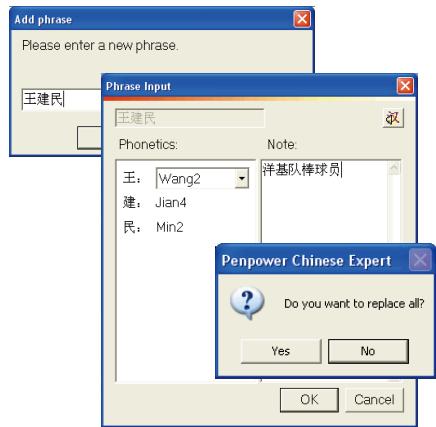
Click the **Add phrase** button . In the **Add phrase** dialog box enter a new phrase such as 王建民 and then click **OK**.

In the **Phrase Input** dialog box, correct any characters with the wrong pronunciation in the **Phonetics** field. You can also click the  button to hear its pronunciation. In the **Note** area, you can provide a note for this phrase such as 洋基队棒球员.

When you've finished making changes, click **OK**. When asked “**Do you want to replace all?**” click **Yes** and the newly constructed phrase will be applied to the entire article. If this phrase appears in any other sentences in the article you can use the **Redo phrase segmentation** command to re-segment the sentence quickly.

In the Chinese Expert phrase database you will now see an entry for 王建民.

Note: If the Pinyin Setting is Zhuyin, the Pinyin displayed is Zhuyin. The  button is also changed to .




Note: In Sentence Segmentation pane, when you rest the cursor over a term, its English translation will be shown if available as a Tip. Its Note will also be shown if available.






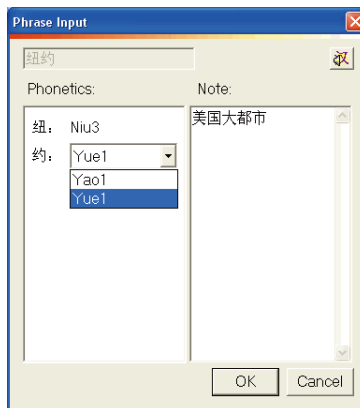
3.6.7 Edit Phrase

Click a phrase such as 纽约, then click the Edit phrase button .


In the Note area, you can provide a note for this term such as 美国大都市 in the Phrase Input dialog box.

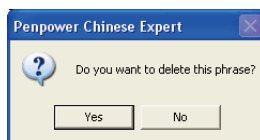
If there are any words with multiple pronunciations - 约 for example has two options - select the one you want. After making the change, click the button  to hear its pronunciation.

When finished, click **OK**.




3.6.8 Delete Phrase

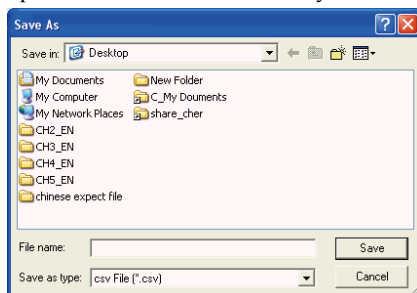
Select a term such as 王建民 then click the **Delete phrase** button  and then click **Yes** to delete this phrase.



3.6.9 Export

Press the **Export** button  and select **Export to user defined dictionary**. Close the “Please select the words” dialog box, all selected characters will then be included into the user defined dictionary. (Please reference 《3.5 Automatic Inclusion of All Words》).


If the user selects “**Save as CSV File**”, a “Save As” dialog box will launch. User to enter file name and select save path. Press “**Save**” and all the words in the previous list will be saved as CSV files. Use software such as MS Excel to open the CSV files and the content can be printed out via a printer for the user to revise anytime.



3.7 Pronunciation Practice

3.7.1 TTS Speech


Penpower Chinese Expert uses TTS synthetic speech technology to provide pronunciation on demand, helping you learn how pronounce words, terms and sentences as well as tone and inflection in a fast and convenient manner.


Click the **Text to speech** button  on the toolbar below the English/Sentence Segmentation pane to listen to the standard pronunciation for the entire document.

3.7.2 Recording

If you are viewing a sentence, you can use the recording function to record your own human speech for the sentence. By comparing it against the standard TTS speech, you can train and correct your own pronunciation or use it for further revision.

Click the **Record in your own voice** button  to turn on the **Recorder**. For instructions, see **3.6.5 Recording**.

Click the **Delete this recording** button  to delete the recorded file.

If a sentence has a voice recording, you can click the **Human Voice** button  to play it. Please refer to **3.6.4 Listen to Pronunciation** for more details.

Click the **Go back to the article** button  to return to viewing the entire article.

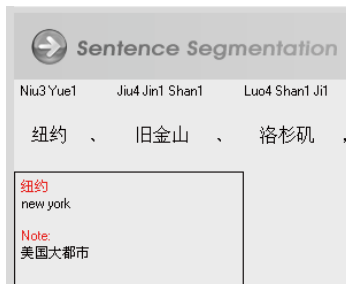
Note: If the pronunciation is too fast or slow for you, its speed can be adjusted to suit your personal preference. For instructions on adjusting the pronunciation speed please refer to 3.9.3 Setting Speed of Speech.



3.8 The Translation Function



3.8.1 Phrase Translation Tip Display

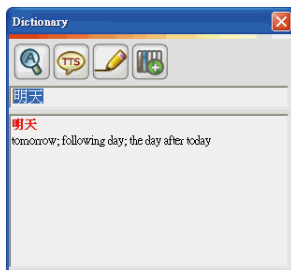
After the article or sentence has been segmented, at **Sentence Segmentation** pane, rest the cursor over a certain word or term. If an English translation exists for this word or term in the system database, it displays as a tool tip.



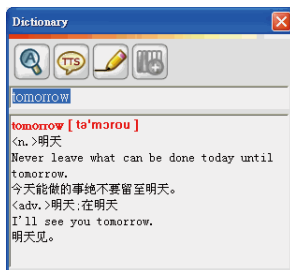
3.8.2 Lookup Phrase Translation in Dictionary

Penpower Chinese Expert provides a very convenient lookup tool-the Dictionary-for checking bilingual translations and usage at any time.


First, click the **Dictionary** button  to open the dictionary. Enter the Chinese or English word/phrase to lookup then click the **Search** button  or press **Enter**. The phrase's English or Chinese translation as well as its definition and usage is displayed.




Chinese to English




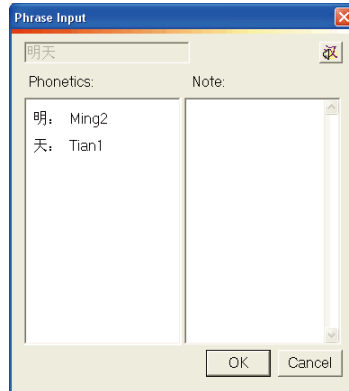
English to Chinese

Click the **Text to Speech** button  to hear the phrase's Chinese or English pronunciation.

For Chinese words, click the **Character tracing** button  to view an animation of its writing trace, radical and stroke number for this Chinese character.




For a Chinese phrase, clicking the **Add phrase** button . You can then add this phrase to the database for the current article in the **Phrase Input** dialog box.

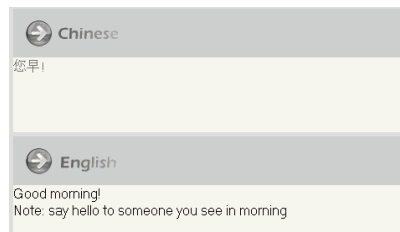


If this phrase already exists in the database, a reminder is displayed.



3.8.3 Manual Translation

Click the indented **Sentence Segmentation** button  to switch to the **English** pane. Click the sentence on the left to show that sentence in the **English** pane. You can now enter your own English translation for this sentence in the **English** pane.




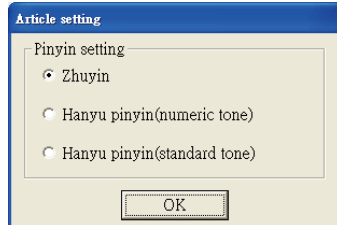


3.8.4 Machine Translation of Whole Sentence or Article

Note: The results from machine translation may not be totally accurate so the translated content is only provided for reference.

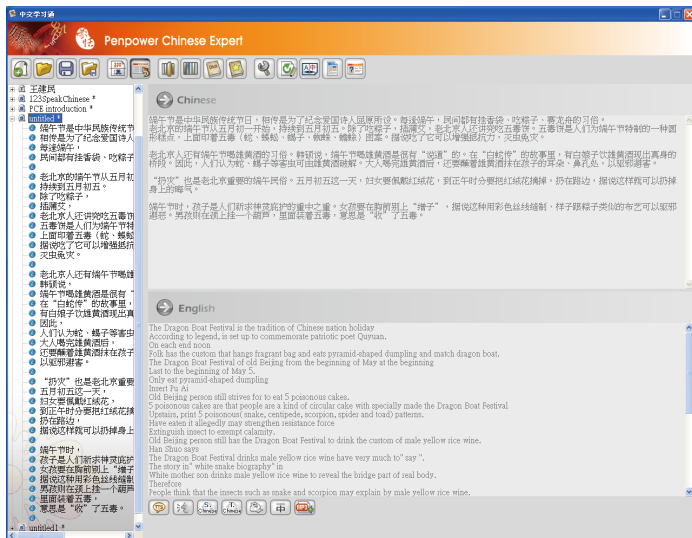
* Translate New Article

Create a new article and then click the **Translation** button . In the **Article setting** dialog box, set the **Pinyin setting** and click on **OK**. The translation of the entire article is shown in the **English** pane.






Tip: Translation engine setting: Choose the setting that corresponds to the Chinese article currently shown in the Chinese pane. If the text in the Chinese pane is in Traditional Chinese, set the translation engine to Traditional Chinese. If the text is in Simplified Chinese, set the translation engine to Simplified Chinese. This will improve the accuracy of the translation.


Penpower Chinese Expert automatically breaks the entire article down into individual sentences. Each sentence is then indexed on the left side. Click an individual entry to display only this particular sentence and to edit the sentence. This helps you learn Chinese one sentence at a time.

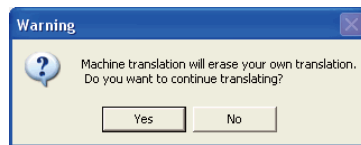


*** Translate Segmented Article**

If sentence segmentation has already been performed on the article, you must first click the indented **Sentence Segmentation** button  to restore it to the  state. Now click the **Translation** button  and the translation of the entire article will appear in the **English** pane.

If you are viewing the article by sentence, only the current sentence will be translated.


If a translation already exists and you click the Translation button , you will see “**Machine Translation will erase your own translation. Do you want to continue translating?**” If you click **Yes**, then the previously translated sentences will be retranslated.

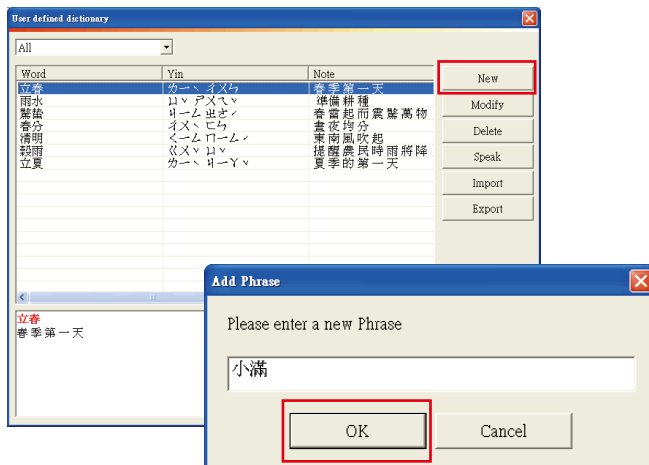




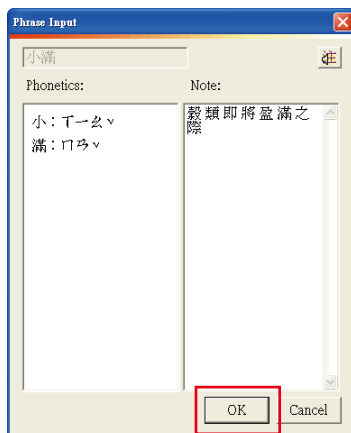
3.9 User defined dictionary

The user can define his/her's dictionary's functions at the main editing page of the user defined dictionary. User can input frequently-used words or create meanings for difficult words for future convenience.

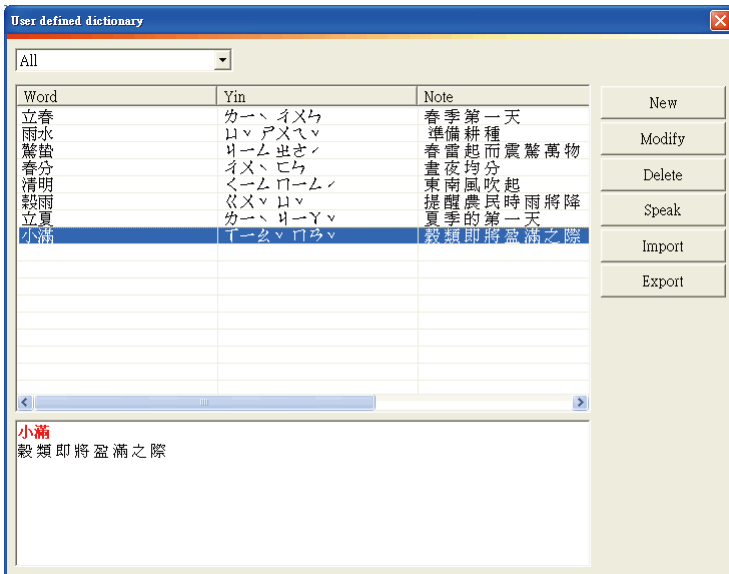
1. Select the **User's defined dictionary** button , open the "User defined dictionary" dialog box, select the **New** button, open the "Add phrase" dialog box, the user can now input the new word that he or she wants to include.



2. After creating the new word, press **OK**, open the "Phrase Input" dialog box, the user can modify the word's pronunciation. In the "Note" column, the user can add his or her comment of the word.



3. After pressing **OK**, immediately see new word in the window, and the window will show comments on the word at the bottom.
4. After the user selects the word, select the right work list, to perform the following editing actions on the word, including “Modify”, “Delete”, “Speak”, etc. At the same time, the user can “import” or “export” the content of his or her customized dictionary for future use.






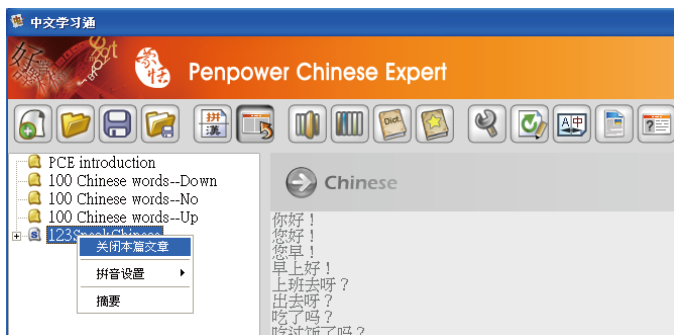
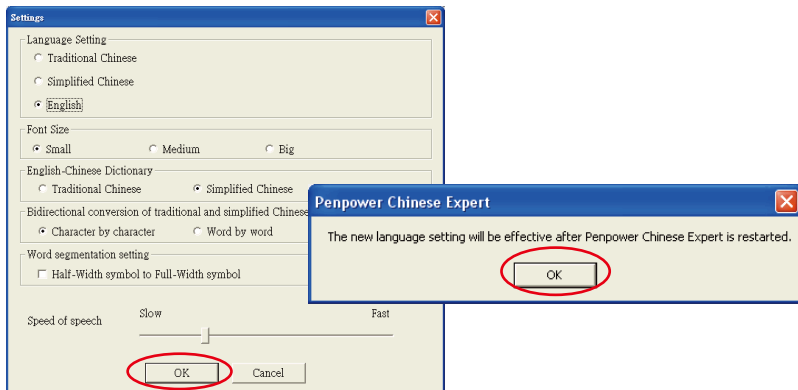
3.10 Settings

3.10.1 Language Setting for the PCE Interface

You can view the Penpower Chinese Expert interface in Traditional Chinese, Simplified Chinese or English.

Click the **Settings** button . In the **Settings** dialog box, you can choose between Traditional Chinese, Simplified Chinese or English in the Language Settings area.

Click **OK** and the reminder “**The new language setting will be effective after Penpower Chinese Expert is restarted**” Is displayed. Click **OK**. If, for example, you choose **Simplified Chinese** for the interface language, when you restart Penpower Chinese Expert the interface will be in Simplified Chinese.



3.10.2 Font Size Setting

Chinese Expert offers three font sizes: Big, Medium and Small. Please choose the font size suitable for your needs.

3.10.3 English-Chinese Dictionary Setting

When a user is using the dictionary and if the word that he or she wants to check is in English, results can be displayed in accordance to user's preferences, either in Simplified or Traditional Chinese. Take the picture below for example, if the user wants to check the meaning of the word "expert", the displayed result will be in Traditional Chinese.



3.10.4 Bidirectional conversion of traditional and simplified Chinese Setting

"Bidirectional conversion of traditional and simplified Chinese Setting" provide 2 options for users: "Character-by-Character" and "Word-by-Word". If the user chooses "Character-by-Character", PCE will change the characters to either Traditional or Simplified Chinese, for example "電腦" will change to become "电脑". If the user chooses "Word-by-Word", "电脑" will become "计算机".

3.10.5 Word segmentation Setting

Due to the article's print layout, a Traditional Chinese article will be displayed in full-width punctuation, while English articles will be displayed in half-width punctuations. PCE provides a "Half-Width symbol to Full-width symbol" function, allowing users to modify article punctuation easily and makes article layout tidy and beautiful.

Note: "Half-Width symbol to Full-width symbol" settings will change with the following "Sentence Segmentation".


3.10.6 Speed of Speech Setting

If the speed of speech is too fast or too slow, use the cursor to move the **Speed of Speech** slider and adjust the speed of speech.


When done click **OK**.

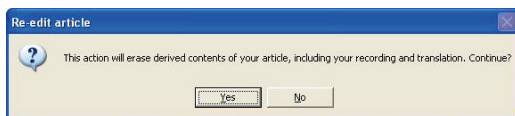


3.11 Re-edit Article


The **Re-edit article** command  can be used to clear all edits made to the content of the current article. Only the original Chinese text in the Chinese field will be retained.

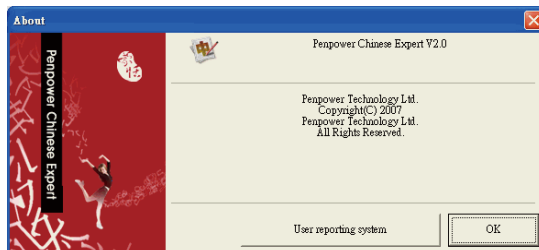
Note: The Re-edit article command will clear only the segmentation in the Sentence Segmentation pane or the English translation in the English pane. Phrases already added to the phrase database will not be affected.

When you click the **Re-edit article** button  the reminder “**This action will erase derived contents of your article, including your recording and translation. Continue?**” displays. Click **Yes** to clear all edits made to the current article’s content.



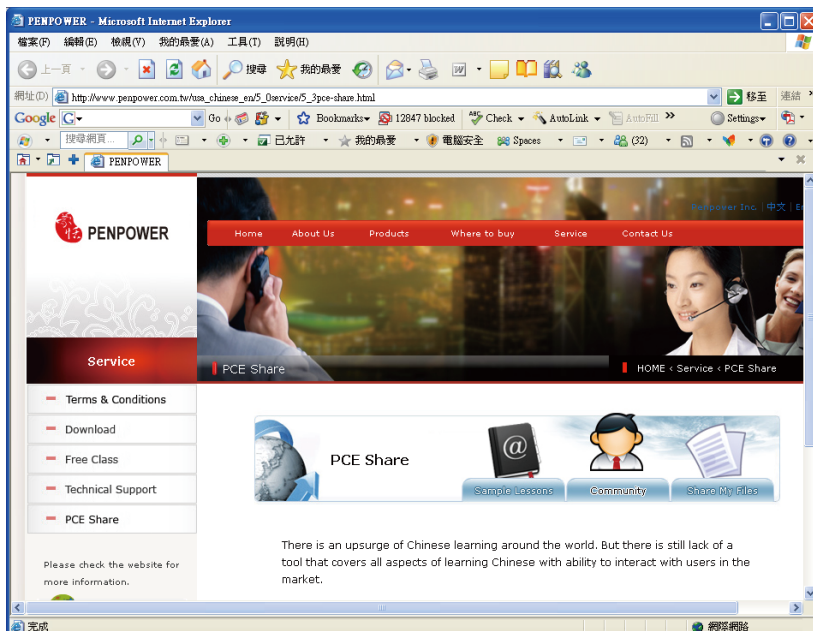
3.12 PCE Share

Click **About** button  to open the About dialog. You can check the PCE version information here.



Upon choosing the **User reporting system** button, Outlook page will pop out, the user will be able to receive immediate online trouble-shooting help.

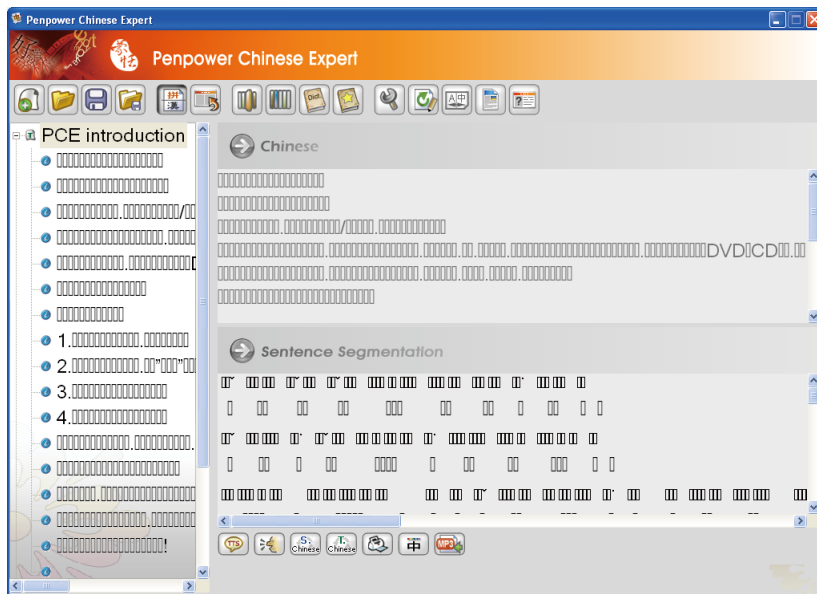
There is also a hyperlink. You can click the hyperlink to link to **Connect to PCE Share Website** where we set up **Sample Lessons**, **Community** and **Share My files**!





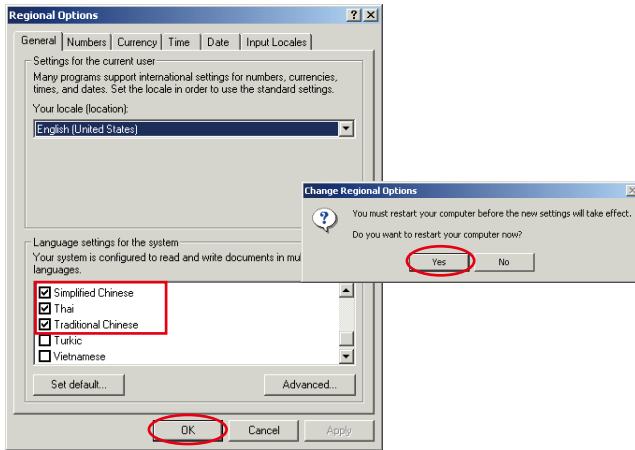
3.13 Language Settings for English Environments

If you use the Windows 2000/XP English operating system, Penpower Chinese Expert may not properly display Chinese characters. For example, Chinese text entered into the **Chinese** pane appears as random code; after sentence segmentation or translation the sentence headings in the article pane on the left appear as random code; or in the **English** pane the Chinese characters (along with some of the Zhuyin or Hanyu Pinyin) are displayed as random code or as small blocks. We therefore recommend setting up your operating system environment's language encoding support before using Penpower Chinese Expert on Windows 2000/XP English operating systems.



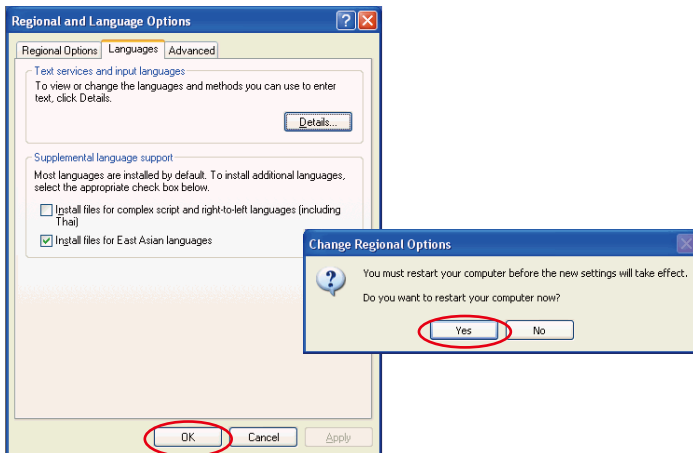
3.13.1 Setup Instructions for Windows 2000 English Operating Systems

Click the **Start** button, and then point to **Settings**. Click **Control Panel**, then double-click **Regional Options** and click the **General** tab. In the **Language settings** for the system area, select **Simplified Chinese** and **Traditional Chinese**, and then click **OK**. You must restart the computer before the settings will take effect. Click **Yes** to restart the computer.



3.13.2 Setup Instructions for Windows XP English Operating Systems

Click the **Start** button, and then point to **Settings**. Click **Control Panel**, then double-click **Regional and Language Options** and click the **Languages** tab. In the Supplemental language support area, select **Install files for East Asian Languages**, and then click **OK**. A reminder that you must restart the computer before the settings will take effect displays. Now just click **Yes** to restart the computer.






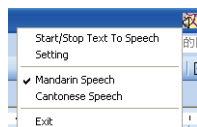


3.14 Penpower VoiceReader

Integrate the Text to Speech (TTS) technology to read aloud the Chinese article content within any window.

3.14.1 Use Penpower VoiceReader


1. Click the **Start** button, and then point to **Programs**. Point to **Penpower Chinese Expert** and then point to **Penpower VoiceReader**. After **VoiceReader** is executed, the small icon  would be displayed on the right top corner of any application.
2. If you select one paragraph of text first, then click , and select **Start/Stop Text To Speech**. The selected text will be read aloud. You can choose **Mandarin Speech** or **Cantonese Speech** pronunciation from the menu.
3. If you click  without selection, then select **Start/Stop Text To Speech**. The text would be read aloud from caret location.



***Note:** The Windows Vista 64bit edition does not support the direct Text-to-speech function. You must select a section of text before you can use the Text-to-speech function.*

4. You can click , and select **Start/Stop Text To Speech** again to stop reading.
5. Click , select **Exit** to exit the **Penpower VoiceReader**.

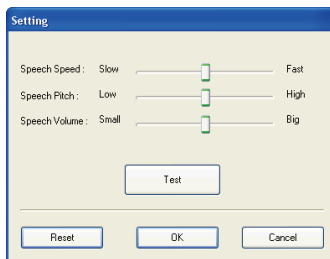
3.14.2 Reading Setting

Click , select **Setting** to open the setting dialog.

Speech Speed: Adjust the speed of reading.

Speech Pitch: Adjust the tone of reading.

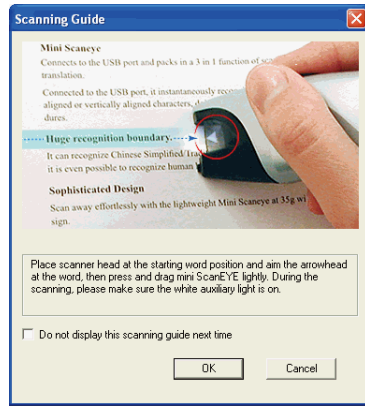
Speech Volume: Adjust the volume of reading.



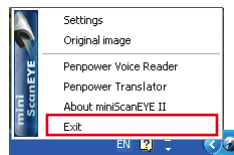
Chapter 4 Using miniScanEYE II

4.1 Start Penpower miniScanEYE II

1. Click the **Start** button. Point to **Programs**, then point to **Penpower miniScanEYE II** and then **Penpower miniScanEYE II** to start the program.
2. When running the miniScanEYE II first time, a **Scanning Guide** Splash Screen appears. Please use the miniScanEYE II as the Guide shows you.



3. After starting the program, an icon appears next to your clock.
4. Start any word processor (i.e., Microsoft Word or WordPad) and place your cursor in the workspace as usual before you start typing.
5. Place the desired document to be scanned on the table and run the pen along the characters.
6. The characters the pen has scanned are recognized and the results are passed directly to your word processor.
7. Click the **miniScanEYE II** icon in the taskbar beside the clock and click **Exit** to close the miniScanEYE II software.

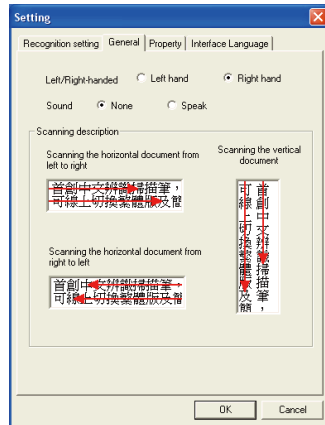
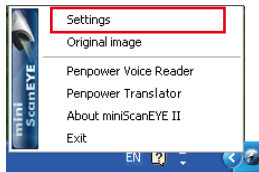




4.2 Scan Direction

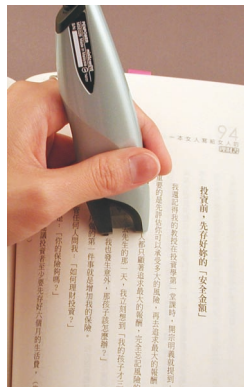
Scan the characters in a consistent direction with the miniScanEYE II. Any changes in direction will cause inaccurate recognition results.

1. Click the **miniScanEYE II** icon on your taskbar beside the clock, then click **Settings**.
2. On the **General** tab, you can select the **Left- or Right-handed** setting and the **Scanning Description** (left to right, right to left, or vertical).



4.3 Scanning Vertically Aligned Text

When scanning vertically aligned text, scan the text top to bottom and have the pen centered on the characters as indicated by the center marker line.



4.4 Scanning Horizontal Text

When scanning horizontal text, you can choose the left-handed or right-handed option. Place the pen on the text, moving from left to right or right to left, depending on the scanning direction option you have set previously.



Right hand: Scanning from left to right or Scanning from right to left



Left hand: Scanning from left to right or Scanning from right to left

Note: Penpower miniScanEYE II is able to scan and recognize one row of characters at any time, place the pen so that the center marker is at the center of the text.

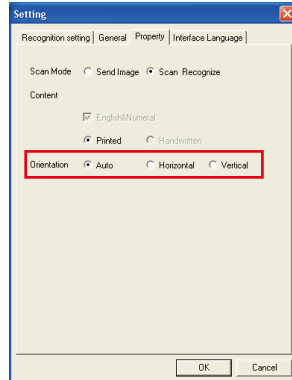
4.5 Automatic/Manual Settings for Text Direction

When you install the Penpower miniScanEYE II, the default setting for the text direction is detected automatically. You can instead manually set the text direction and start scanning too. You can still leave the setting at automatic detection but, as miniScanEYE II needs to detect the text direction, the scanning speed will be slower.



If you know that all your text is in a certain direction, you can set the miniScanEYE II to scan in that direction based on the setting just discussed: **Horizontal** or **Vertical**.

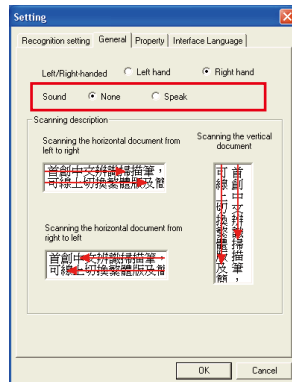
1. Click the **miniScanEYE II** icon on your taskbar by the clock and click **Settings**.
2. On the **Property** tab at **Orientation** select the desired text direction.



4.6 Reading Aloud As You Scan

Every time a character has been recognized, miniScanEYE II will pronounce that character in **Mandarin**.

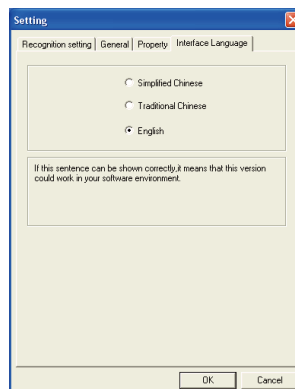
1. Click the **miniScanEYE II** icon in your taskbar and click **Settings**.
2. On the **General** tab at **Sound** select **None** or **Speak**.



4.7 Interface language settings

Interface Language Settings can let you choose **Traditional Chinese**, **Simplified Chinese** or **English** for user interface language. After choosing the language, you may check the description.

If the description does not display properly, which means your Windows OS does not support the language display. Please choose another language.



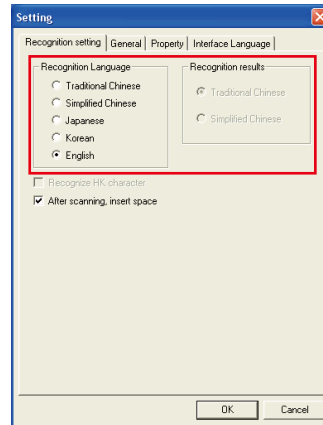
4.8 Traditional/Simplified Chinese Recognition

Before using Penpower miniScanEYE II, check that the **Recognition Setting** has been configured to suit your needs. Different configurations will yield different results when scanning.

1. Click the Penpower miniScanEYE II icon, click **Settings** and select **Traditional Chinese, Simplified Chinese, Japanese, Korean** or **English**.

Recognition: Based on the text to be scanned, choose the correct recognition kernel.

Recognition Results: Select the style of Chinese in the targeted scanning results.



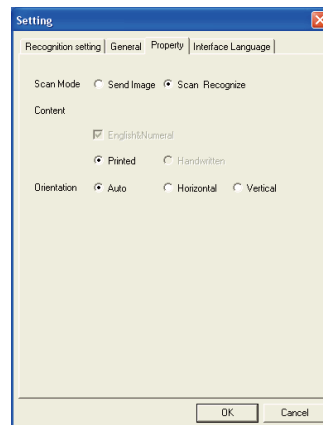
Tip: miniScanEYE II can actually convert Traditional text on your document to a Simplified Chinese oriented result, in which you can select a different combination.

2. On the **Property** tab, you can set the following:

In **Property** Settings, provides selection of **Scan Mode** and **Content**. Depend on your desire to select **Scan Mode**. If you select **Send Text**, it will scan and recognize text to your computer. If you select **Send Image**, it will send the scanned image to your computer.

Note: When you use Send Image, you need to run the software which supports image format such as MS Word.

You can depend on the document you want to scan to select **Content**. It provides Chinese, Japanese, Korean, English & Numeral, **Printed** or **Handwritten**. Select identical language for higher accuracy.





4.9 Practice

Try scanning the illustrated text below, in a horizontal and vertical fashion, following the guidelines above. Don't make abrupt moves when scanning, such as changing the speed of your pen, or scan too fast. It will take approximately 5 seconds to complete scanning the text below.

If you have successfully scanned the text with the correct recognition results, you are now ready to put miniScanEYE II to actual use!

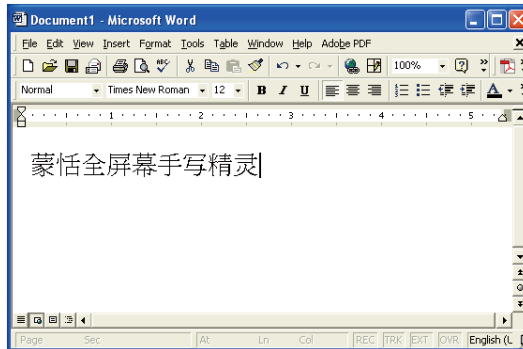
蒙恬扫译笔中文辨识扫描翻译

蒙恬扫译笔中文辨识扫描翻译

4.10 Using Balloon UI

When using the Balloon UI, all scanning results will be directly transferred to the desired application. You can continuously scan through text and all results will be instantly transferred to the desired application.

For example, scan 蒙恬全屏幕手写精灵 into MS Word continuously.



4.10.1 Correct a Specific Character


When you want to correct a specific character, just rest your cursor on the character for 1-2 seconds and a menu showing a list of suggested corrections will be presented to you. This will enable you quicker correction and a faster way of inputting characters into your desired application.

Tip: You just need to rest your cursor on the character; you do not need to click any buttons.

Tip: You only need to leave your cursor on the character, you do not need to click any buttons.

The menu gives you have a list of suggested corrections, character **combination** buttons



hover your cursor over the **display original text** button .





*. Candidates

If you find a incorrect character in your result box, use the **Candidate** command to replace with the correct character.

1. The illustration shows a character that has been recognized incorrectly.
2. Rest your cursor on the character for 1-2 seconds and a menu showing a list of suggested corrections displays.
3. If the correct character appears among the list of characters presented, click the character to have your current incorrect character replaced.





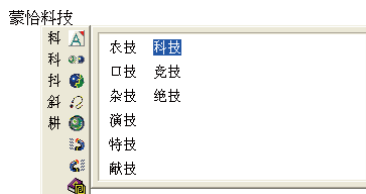
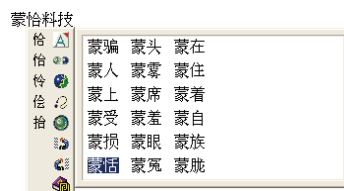
*. Pre-emptive Linking

In any continuous text (2 characters), the first character is the second character's uplink, while the second character is the first character's downlink. For example, in 科技, 科 is 技's uplink, while the character 技 is 科's downlink.

1. When using the miniScanEYE II, the recognition results will be directly transferred to the desired application.
2. As shown in the illustration, the character 恬 has been recognized incorrectly as 恰 as well, as 科 which also has been incorrectly recognized as 料.

蒙恰科技

3. Rest your cursor on the character 恰 for 1-2 seconds and a menu displays listing possible characters. On the menu, click the magnet which is facing left (uplink)  and a menu displays a list of combinations which are possible replacements for the character before 恰.
4. Rest your cursor on the character 料 for 1-2 seconds, and again a menu displays the list of possible replacements. This time, click the magnet which is facing right (downlink)  and the displays a list of combination of characters for the character after 料.






5. The correct resulting text will now appear in the result box.

蒙恬科技

*. Phrase Correction

In Full Screen mode if you wish to enter a common phrase such as an idiom and if you aren't sure how to write one of the characters you can substitute a similar-sounding character instead. If you are not sure of the character's pronunciation either, choose any at random.

When you have finished writing the phrase, select the character you are not certain about and then click the **Phrase correction** button . The recognition software will examine the four characters before or after this particular character to guess what you meant and make the change.

1. When entering an idiom in **Full Screen** mode such as 拔苗助长, if you are not sure of how to write the character 拔, you can enter the character 一 so the input looks like 一苗助长.
2. Rest the cursor over the character 一 for a moment and a menu with the candidate character displays 拔. Click the **Phrase correction** button  and the 一 character will be changed to 拔.
3. If there are multiple candidate words, these will be shown in the candidate words menu for you to choose from. For example, if the input was 股份一限公司 when you pause the mouse cursor over the 一 character, a menu with Candidate characters displays. Select the appropriate character and click the **Phrase correction** button  to make the correction.

一苗助长

一苗助长



拔苗助长

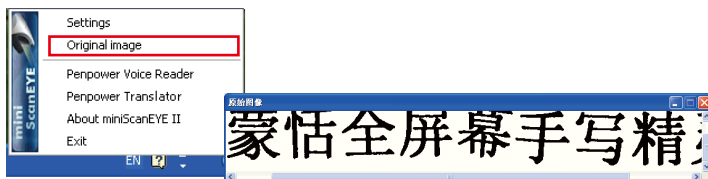
股份一限公司




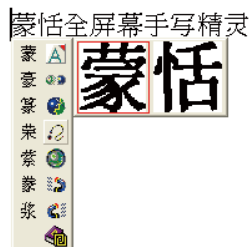
4.10.2 Displaying Original Form

After making changes to the results, you can check your original scan to look at the difference and look at the original text when scanned.


1. Scan the desired text and the recognition result is directly transferred to the desired application.
2. Click the **miniScanEYE II** icon on your taskbar by the clock and click **Original image** to show the original image of the text.



3. Or rest the cursor on the character for 1-2 seconds and a menu displays. Click the third button  from the left and you will see the original text displayed.




4.10.3 Punctuation in Balloon UI





Click  and a panel listing punctuation marks will be displayed accordingly, allowing you to input half shaped or full shaped punctuation marks.



4.10.3 Online Translation

The Balloon Interface has an **Online translation** command. Whenever you do not know the scanning Chinese or English words, you may check the translation with the **Online translation** command.

Rest your cursor over the scanned word, and a menu appears. Click **Online translation** Button .

In the translation window, you may click the  button to read out the unfamiliar Chinese or English words aloud. Click  or  to check the last or next word. Click  to see phrase and further explanation.

科技股份有限公司

科		科技
料		<形容词>
斜		technological;
科		<不可数名词>
利		tech;
耕		<名词>
		technology,

Penpower Technology LTD.,

T		科技
		technology [tek'nɒlədʒi]
		<n> 工艺学 工艺技术; (工业) 技术
		chemical technology
		化学工艺学
		space technology
		宇宙飞行技术 空间技术
		science and technology
		科学和技术
		<n> (总称) 术语, 专门语
		<n> 制造学

Penpower Technology LTD.,

T		科技
		technology [tek'nɒlədʒi]
		<n> 工艺学 工艺技术; (工业) 技术
		chemical technology
		化学工艺学
		space technology
		宇宙飞行技术 空间技术
		science and technology
		科学和技术
		<n> (总称) 术语, 专门语
		<n> 制造学

technology trade 技术贸易
technology center 技术中心
technology import 技术引进
technology market 技术市场
technology matrix 技术矩阵
technology policy 技术政策
technology transfer 技术转让
technology assessment 技术评定
technology management 工艺管理
technology sales fair 引进技术洽谈会
technology compound metal 技术复合型
technology transfer clause 技术转让条款
technology transfer patent 技术转让专利权
technology-intensive technology 技术密集型技术
technology composition of capital 资本技术构成
technology research and development 技术研究与开发



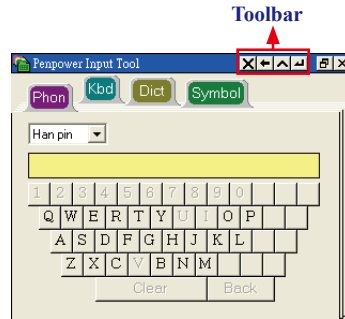
Chapter 5 Penpower Assistant Tools

Installing **miniScanEYE II** also installs **Penpower Input Tools** and **Penpower Translator**.


5.1 Input Tools

Click the **Start** button, and then point to **Programs**. Point to **miniScanEYE II** and then click **Penpower Input Tools** to start **Penpower Input Tools**. There are four input methods: Phonetic, Keyboard, Dictionary, and Symbol.

The commands on the toolbar are **Delete the selected character**, **Delete the character before the cursor**, **Insert a blank** and **Change line**.



Note: Before running Penpower Input Tools, make sure using miniScanEYE II has been started. Otherwise you'll be asked to start using miniScanEYE II first.

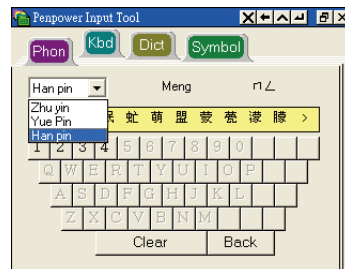
TIP: Rest the cursor on Penpower Input Tools for normal size. Otherwise Penpower Input Tools appears as an small icon  to avoid taking up space on the screen.

5.1.1 Phonetic Input Tool

There are three types of phonetic input tool, Zhu yin, Yue Pin and Han pin by default. You can create your own phonetic input tool.

How to Use

1. Select one phonetic input of Han pin, Yue Pin or Zhu yin.
2. Click the screen keyboard buttons one by one in order.
3. The converted candidate character is listed in the text buffer.

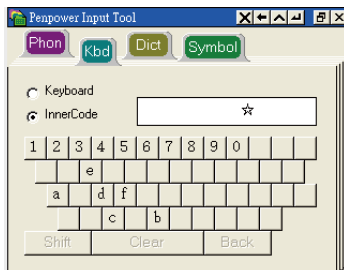




5.1.2 Keyboard Input Tool

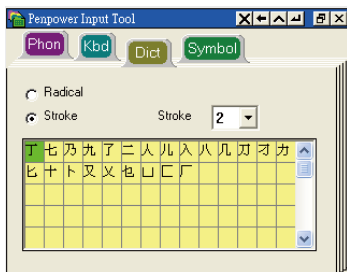
Keyboard: Simulated software keyboard.

Inner Code: e.g. The inner code of [☆] in hexadecimal is **A1B8**. Click **A 1 B 8** on the screen keyboard in order in order to get [☆].

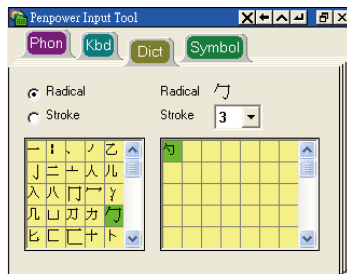


5.1.3 Dictionary Input Tool

Query by stroke :

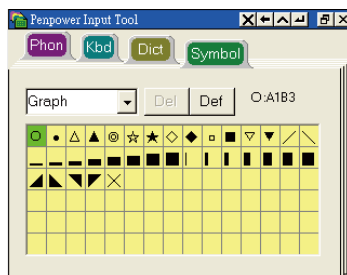


Query by radical :



5.1.4 Symbol Input Tool

The special symbols are grouped on several tables. Select the table and click the symbol what you want to get. You can customize the symbol tables.



5.2 Penpower Translator

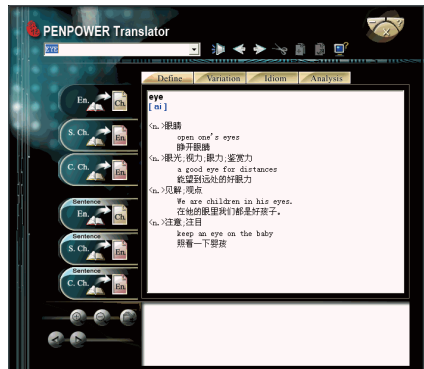
This is Chinese-English bi-directional translation software, which includes Chinese-English/English-Chinese dictionary lookup and Chinese-English/English-Chinese phrasal translation.

Click the **Start** button, and then point to **Programs**. Point to **miniScanEYE II** and then click **Penpower Translator** to start **Penpower Translator**.



5.2.1 English Words

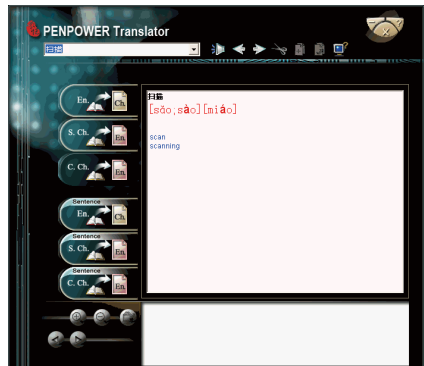
1. Click the **En. Ch.** button on the left.
2. At the upper-left corner in the input box, type an English word and press **Enter** to see the Chinese translation.
3. Click different tabs to look up definitions, variations, idioms and analysis.



5.2.2 Chinese Characters


1. Click the **S.Ch. En.** button on the left.
2. At the upper left corner in the input box, input a Chinese character or phrase, and then press **Enter** to see the English explanation.

Tip: If the Chinese word you wish to look up is Traditional Chinese, select the C. Ch. En. translation option.

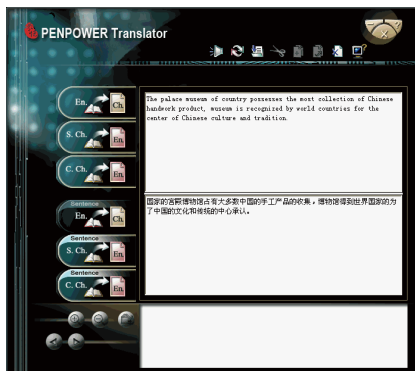





5.2.3 English Article Translator

1. Click the Sentence **En. Ch.** button on the left.
2. At the upper left-hand corner, input the text to be translated and explained in the pane and click  to translate.

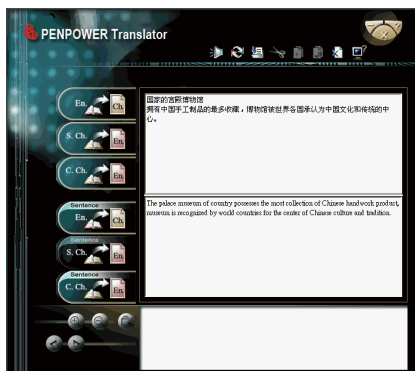
Tip: When you translate a whole article, make sure there's a period at the end of each sentence. Having a period at the end of each sentence will increase the accuracy of translation.




5.2.4 Chinese Article Translator

1. Click the Sentence **S. Ch.En.** button translation on the left.
2. At the upper left-hand corner, input Chinese text, click the  button to start translation. The translation result is shown in the lower pane.

Tip: If the Chinese sentence you're looking up is Traditional Chinese, please select the Sentence C.Ch. En..



Click the Speech  button. If looking up a single character or word, the Translator will provide its Chinese or English pronunciation. If translating the entire text, it will read all of the content in the current input window.

The other buttons on the translator interface have the following functions:



: Previous/Next: look up the definitions for nearby words.



: Cut: cut the selected content (only available when translating an entire sentence).




: Copy: copy the selected content.

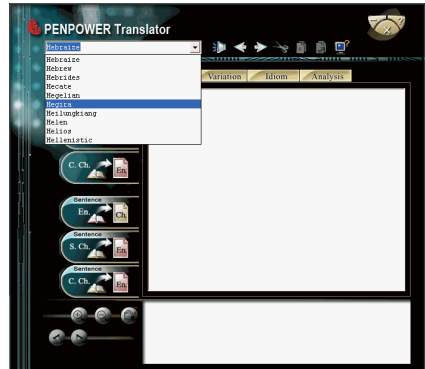


: Paste: paste the cut or copied content. (Only available when translating an entire sentence)

 : Delete: delete all input and translation content (only available when translating an entire sentence).

 : Save: click this button; the Save as dialog displays. This will save all of the input and translated content into a new .txt file (only available when translating an entire sentence).

When looking up a single word you do not need to enter the entire word. If the word you wish to look up shows up in the list, use the direction keys to select that word as the input, then press **Enter** to look up that word.






5.2.5 Translating Scanned Input

If you start the Translator by running the Penpower TransEYE, there is a pane to show a scanned image under the translation pane. So you can also make use of the mini ScanEYE II to input the phrase for you, while the original text will be displayed in the lower pane.




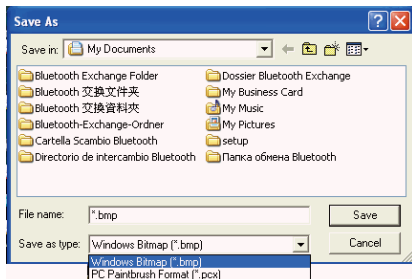
When translating a single word, inputting the word with mini Scaneye II will let you input the complete phrase. Every press of the function button on the pen will translate the next word and so on.


Clicking the Next button  or the Previous button  will allow you to scroll through to the next or previous character in Translator's dictionary database, allowing you to look up on more meanings on the word's variants.

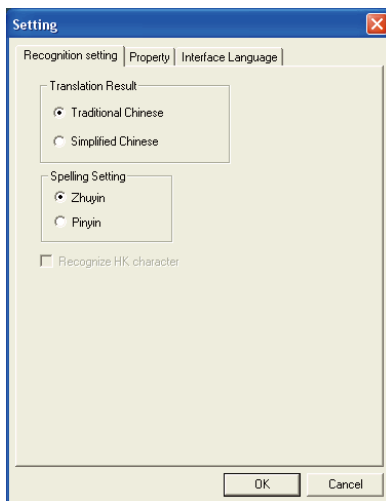
You can zoom in or out by clicking  or , adjusting the size of your scanning proportionally.




You can also save the scan as a picture by clicking . When prompted for a directory to save it in, type the filename of your choice and choose the folder to save the picture in.

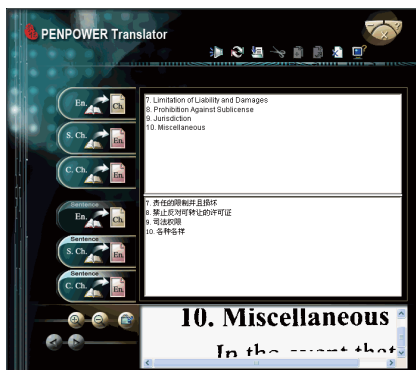


Click the **System Setting** button . On **Setting** dialog box you can set **Translation results** and **Spelling Setting**.



You can also translate the whole paragraph of whatever you've scanned with mini ScanEYE II by clicking , which will in turn translate whatever you have scanned into the other language. You can translate phrase by phrase, or translate the whole paragraph at one time.

Note: You will not be able to use the Previous /Next  buttons when you are in phrasal translation mode.



Penpower Chinese Expert (Pen Scanner) V2.0

User Manual

Penpower Technology Ltd.,
Edition: Released in July, 2008