

# **Penpower mini ScanEYE II**

## **User Manual**

Version: V2.3

Edition: Released in March, 2009

# **Penpower Technology Ltd.**

## **Software User License Agreement**

You are licensed to legally use this software program (“the Software”) by Penpower Technology Ltd (“Penpower”) under this license agreement (“The Agreement”). If you do not agree with any of the provisions in this Agreement, please do not install, copy or use the Software. By using the Software, you are deemed to fully understand and accept the provisions of this Agreement.

### **1. Intellectual Property**

All intellectual property rights in the Software, together with all information and documents included in the packaging for the Software (including but not limited to copyrights), are property of Penpower, and are protected by relevant laws and regulations.

### **2. License to Use**

You are authorized to use the Software on one (1) single computer only. You may not use the Software on any other machines other than the said single computer.

### **3. Authority to Copy**

The Software and all documents included with the Software, and copyright thereof, are property of Penpower. You are licensed to make one (1) copy of the Software for your personal backup purposes. All other acts of copying are strictly prohibited.

You may not sell, lease, disassemble, reverse engineer, copy, translate, adapt or derive the Software, or obtain the source code of the Software by any other means. You may not use the Software for any purposes other than those permitted under this Agreement.

### **4. Business Users**

If you need to install or use the Software on more than one (1) computer, please contact Penpower or our local distributor to purchase a license for the additional use.

### **5. Liability**

You agree to indemnify Penpower against all losses, costs, debts, settlement payments or other expenses (including but not limited to attorneys fees) arising from your breach of this Agreement, and you agree to compensate Penpower for all of the abovementioned damages.

### **6. No Warranty**

Effectiveness of a packaged software in handling information is closely related to its software and hardware environment. The Software is published following careful development and product testing by Penpower, but Penpower is not able to conduct tests based on all possible combinations of software and hardware environment. Therefore, Penpower is unable to promise nor warrant that there will be absolutely no risk of loss or damage of information, or any other kind of loss, during installation and/or execution of the Software. You must be fully aware of your risks in using the Software.

Penpower will provide you with the Software and support services in respect of the Software to the maximum extent permitted by law. However, Penpower does not warrant that the Software and information included in the package of the Software contain no defects or errors. Penpower is not liable for any indirect, special or incidental loss arising from the Software, including but not limited to loss of profits, damage to business reputation, cessation of work, hardware malfunction or damage, or any other commercial damage or loss arising from commercial use of the Software.

#### **7. Limitation of Liability and Damages**

The maximum amount of compensation payable by Penpower, in respect of any damage incurred by you for any reason under this Agreement, is limited to the amount you have already paid to Penpower in respect of the Software.

Under no circumstances will Penpower be held liable for the possibility of loss, notwithstanding Penpower may be aware of the possibility of such loss.

#### **8. Prohibition Against Sublicense**

You are prohibited to assign the license in respect of the Software granted to you under this Agreement, or to grant a sublicense to another person.

#### **9. Jurisdiction**

With regards to any disputes arising from this Agreement, Penpower and you agree that the court having jurisdiction over the business location of Penpower will be the court in the first instance.

#### **10. Miscellaneous**

In the event that any provision of this Agreement is found to be invalid at law, such invalidity will not affect the validity of any other provisions, or the legal enforceability of such other provisions.

In the event that the Software cannot be executed under conditions of normal use, due to any damage to the original disk/s, Penpower will replace the disk/s free of charge.

# CONTENTS

<b>Chapter 1 Product Features.....</b>	<b>1-1</b>
<b>Chapter 2 Installation.....</b>	<b>2-1</b>
2.1 System Requirements.....	2-1
2.2 Hardware Specification.....	2-1
2.3 Software Installation.....	2-2
2.4 Hardware Installation.....	2-5
<b>Chapter 3 Character Input.....</b>	<b>3-1</b>
3.1 Open Penpower mini ScanEYE II.....	3-1
3.1.1 miniScanEYE Tool Bar.....	3-1
3.2 Scan to Computer.....	3-3
3.2.1 Scan & Recognize.....	3-3
3.2.2 Send Image.....	3-3
3.3 Settings and Scan Tips.....	3-4
3.3.1 Language Settings.....	3-4
3.3.2 Scan Direction.....	3-5
3.3.3 Speech.....	3-5
3.3.4 Scanning Horizontal or Vertically Aligned Text.....	3-7
3.3.5 Property Settings.....	3-7
3.3.6 Interface Language Settings.....	3-8
3.3.7 Practise.....	3-8
3.4 Using Balloon UI.....	3-9
3.4.1 Correct a Certain Character.....	3-9
3.4.2 Displaying Original Image.....	3-13
3.4.3 Punctuation in Balloon UI.....	3-13
3.4.4 Online Translation.....	3-13
3.5 Displaying Original Image.....	3-14
<b>Chapter 4 Penpower VoiceReader.....</b>	<b>4-1</b>
4.1 Open Penpower VoiceReader.....	4-1
4.2 VoiceReader Setting.....	4-2
4.3 Turn off Penpower VoiceReader.....	4-2
<b>Chapter 5 Penpower Translator.....</b>	<b>5-1</b>
5.1 Open Penpower Translator.....	5-1
5.2 English Character Dictionary Lookup.....	5-1

5.3 Chinese Character Dictionary.....	5-3
5.4 English Phrasal Dictionary.....	5-4
5.5 Chinese Phrasal Dictionary.....	5-5
5.6 Translating Scanned Input.....	5-6

The software application may have a newer version at the time when this product was being manufactured and/or packaged. If the content on your application screen differs from your User Manual, please follow the latest application screen upon installation.

# Chapter 1 Product Features

## Chinese/English Scan and Translation Pen

Penpower mini ScanEYE II, the best input device, scans and recognizes Traditional Chinese, Simplified Chinese, English, Japanese and Korean into your computer via the USB interface. Whenever you come across any particular words or sentences that you do not understand, mini ScanEYE II will scan and translate for you.

With an ergonomic design, the brand new mini ScanEYE II provides a comfortable handle which fits all left and right-handed users. Scan away effortlessly with the transparent scan tip. Where you see, where you scan.

## Features

- **A brand new ergonomic design**

Provide a comfortable handle which fits all left and right-handed users. Scan away effortlessly with its transparent scan tip. Where you see, where you scan.

- **The best input and translation device**

Connects to the USB port and bundle in a 3 in 1 function of scan, recognition and translation. When scanning, it instantaneously recognizes and translates horizontal or vertical aligned characters, doing away with all the complex usage procedures.

- **Huge recognition boundary**

It can recognize 13060 Traditional Chinese characters, 6763 Simplified Chinese characters, 4184 Hong Kong characters, 3580 Japanese characters, English words, Korean characters, numbers and punctuation.

- **Multiple language recognition system**

The adjustable multiple language recognition system provides Traditional Chinese, Simplified Chinese, Hong Kong characters, English, Japanese and Korean recognition kernels.

- **Balloon Interface**

Balloon interface offers you a non-interference environment. All scan results will directly transfer to the desired application. Balloon interface pops up and provides online translator, pronunciation, candidate words and related words whenever you need.



- **Correction and pre-emptive computing**

Spell-check function which predicts characters while correcting alignment now empowers you with a more accurate scanning flow.

- **Continuous scanning and recognition**

Multi-thread architecture allows you to scan continuously without pause while recognition is being done on the fly.

- **Bi-directional Chinese to English document translation**

Translate phrases or characters from English to Chinese or vice versa and have your complete Chinese document translated into English right away, with a read back function which reads out your document to you aloud.

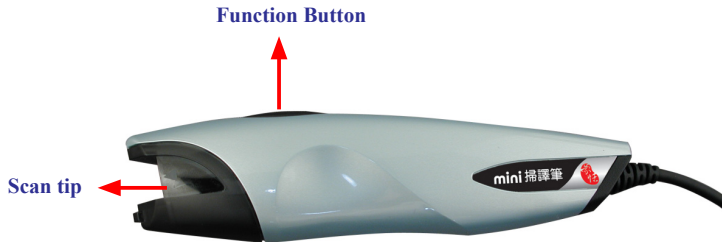
## Chapter 2 Installation

### 2.1 System Requirements

- Pentium II 300 CPU or above
- 128MB of RAM
- 250MB of available hard disk space
- Windows 2000/XP/Vista 32 bit
- USB port

### 2.2 Hardware Specification

- Dimensions: 131mm x 31mm x 19mm
- Weight: 45g (excludes USB cable)
- Interface: USB 2.0
- Scanning speed: 15 cm/sec
- Character size: 5~22 pt



#### ***Function button:***

When scanning words, the function button can be used as Enter function. It also works as checking next word in the Penpower Translator.





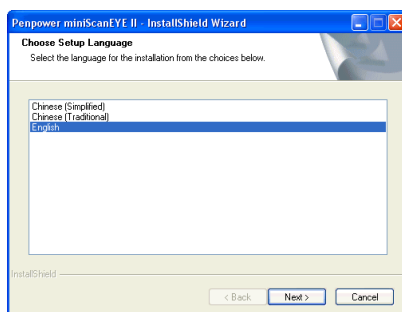
## 2.3 Software Installation

1. Insert the mini ScanEYE II setup CD into your CD-Rom drive. System will run installation program automatically. Click **mini ScanEYE** on the Installation window to install mini ScanEYE.



*Tip: mini ScanEYE provides TranStar dictionary and OCR optical character recognition software as free gifts. You can installation them from Installation window.*

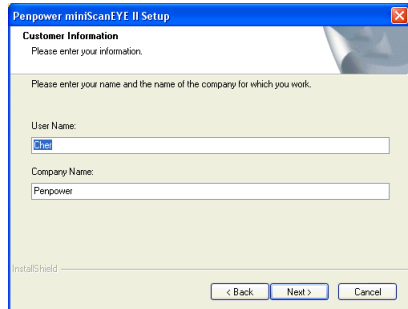
2. Select an installation language and click **OK** to install.



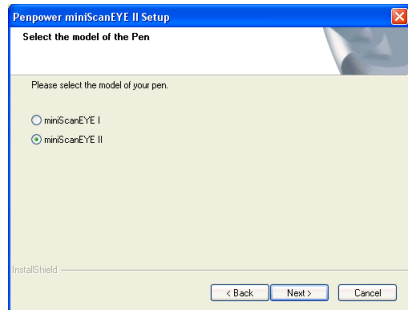
3. Click on **Next** to continue.



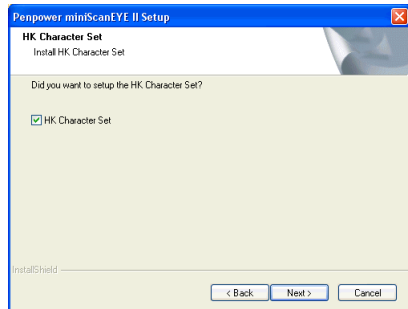
4. Key in your user name, company name and click **Next** to continue.



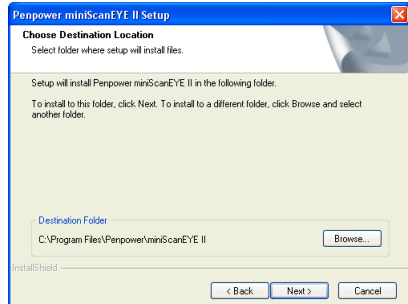
5. Please select the type of the miniScanEYE II, then click **Next** to continue.



6. Please choose to install the Hong Kong characters or not, then click **Next** to continue.

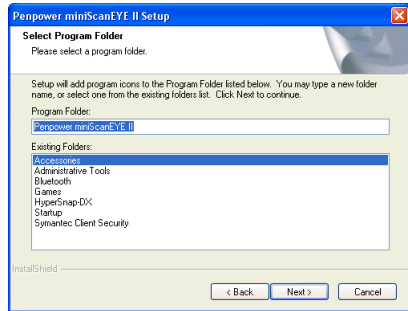


7. Choose the destination folder to install the software. This is usually left as default. Click **Next** to continue.

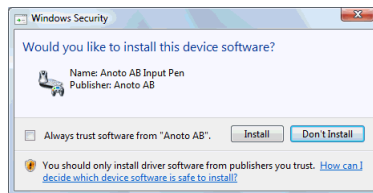




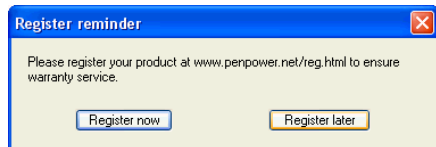
8. Choose the folder that you want to install mini ScanEYE II to in Program Files. This is usually left as default. Click **Next** to continue.




*Note: When installing mini ScanEYE in the Vista OS, the system may show that Windows can't verify the publisher of this driver software. Please choose **Install this driver software anyway**.*



9. After the software is installed, a register reminder window will pop up to remind you registering your product at [www.penpower.net/reg.html](http://www.penpower.net/reg.html) for ensuring the warranty service. Click **Register now** to register. If you click **Register later**, you may go to **About/Register** when you need.



10. Click **Finish** to restart your computer. Then you will see  icon on your desktop, double-click to run mini ScanEYE II.

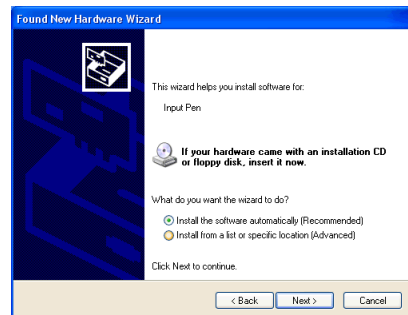


## 2.4 Hardware Installation

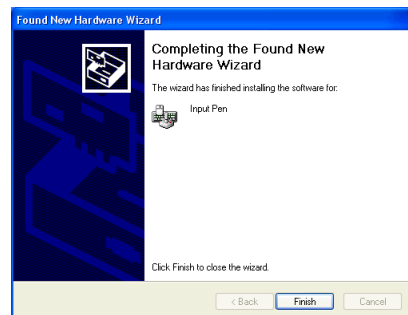
1. Plug in the mini ScanEYE II into your computer's USB port. Some systems may show **Found New Hardware Wizard**. Please select **[No, not this time]** and click **Next** to continue.

*Note: Some computers may shut down accidentally after connection. This is due to lack of power to support several USB devices. To avoid this problem, connect your mini ScanEYE and other USB devices to an extra-powered USB hub.*

2. Select **[Install the software automatically]** and click **Next** to continue.

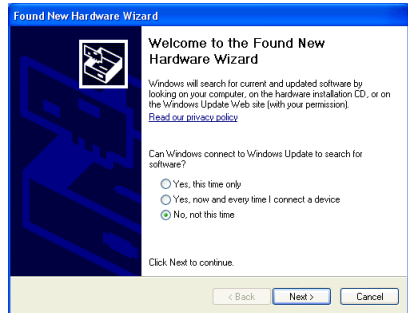


3. Click on **Finish** to end the installation.

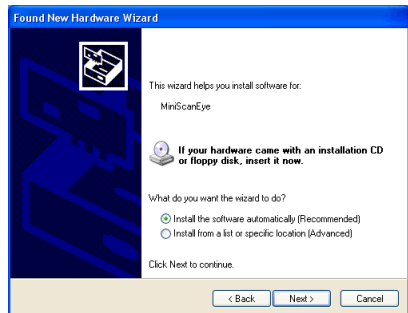




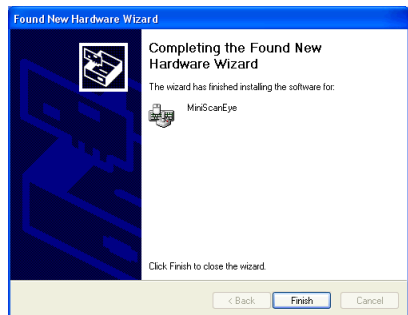
- When first time execute mini ScanEYE II, some systems may show **Found New Hardware Wizard**. Please select **[No, not this time]** and click **Next** to continue.



- Select **[Install the software automatically]** and click **Next** to continue.



- Click on **Finish** to end the installation.



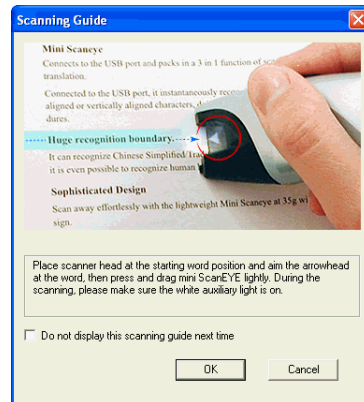
*Note: When connecting mini ScanEYE to another USB port, you may follow the Hardware installation steps to install the Found New Hardware Wizard.*

## Chapter 3 Character Input

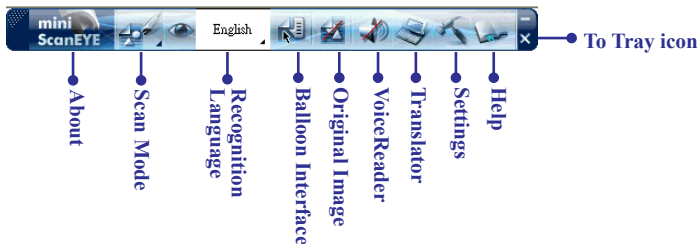
### 3.1 Open Penpower mini ScanEYE II


Go to [Start/All Programs/Penpower miniScanEYE II /Penpower miniScanEYE II] or double click the button  on the desktop to start miniScanEYE tool bar.

*Note: When running the miniScanEYE II first time, the Scanning Guide's window will appear. Please use the miniScanEYE II as the Guide show you.*



#### 3.1.1 miniScanEYE Tool Bar







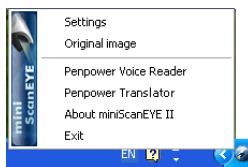
1. **Scan Mode:** Provide [Scan & Recognize] and [Send Image], click  to select scan mode. If you select **Scan & Recognize** mode, it will scan and recognize text to your computer. If you select **Send Image** mode, it will send the scanned image to your computer.



*Note: When you use Send Image mode, you need to run the software which supports image format such as MS Word.*



2. **Recognition Language:** mini ScanEYE can recognize English, Traditional Chinese, Simplified Chinese, Japanese and Korean languages. Click  to select the language you desire to recognize.
3. Click  to minimize the tool bar to Taskbar.
4. Click  to minimize the tool bar to tray icon. Double-click the tray icon will open the tool bar. Right click on  to open the function menu.



## 3.2 Scan to Computer

### 3.2.1 Scan & Recognize

1. Select [**Scan & Recognize**] from [**Scan Mode**].
2. Select the language you desire to recognize from [**Recognition Language**].
3. Open any word processor (i.e Microsoft Word or Wordpad) and place your cursor in there as usual before you start typing.
4. Place a document on the table and place scanner head at the starting word position and aim the arrowhead at the word, then press and drag mini ScanEYE gently.
5. The characters that the pen has passed through will be recognized to your desired word processor as following:

中英文掃描翻譯筆

### 3.2.2 Send Image

1. Select [**Send Image**] from [**Scan Mode**].
2. Open a word processor which can contain images (i.e Microsoft Word) and place your cursor in there as usual before you start typing.
3. Place a document on the table and place scanner head at the starting word position and aim the arrowhead at the word, the press and drag mini ScanEYE gently.
4. The characters or pictures that the pen has passed through will be scanned to your desired word processor as following:








## 3.3 Settings and Scan Tips

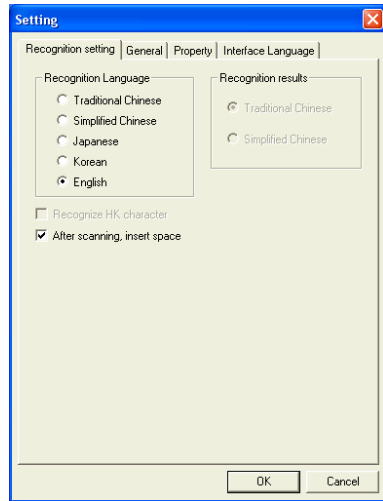
### 3.3.1 Language Settings

Besides selecting recognition language from the tool bar, you can also click **[Settings]**  from the tool bar to select recognition language and recognition results. Different settings will get different recognition results.

In **[Recognition Setting]**, you will find Traditional Chinese, Simplified Chinese, Japanese, Korean and English under **Recognition Language** setting. When you select Traditional Chinese or Simplified Chinese, you can find the setting of Recognition results on the right side, select the one you wish to input to computer.

**Recognition Language:** Based on your document to choose the correct recognition language.

**Recognition Results:** Select the type of Chinese in the targeted scanning results.



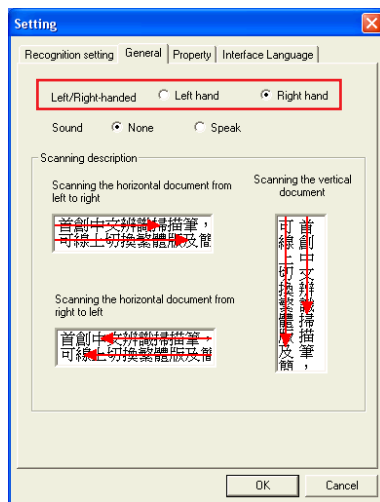
*Tip: mini ScanEYE II can actually convert Traditional text on your document to a Simplified Chinese oriented result vice versa, in which you can select a different combination.*

### 3.3.2 Scan Direction

#### \* Scan Direction Settings

mini ScanEYE II must be used to scan the characters in a consistent direction, any changes to the direction will cause inaccurate recognition results.

Go to the **General** tab and you will be able to change the configuration settings according to how you hold the pen and the direction which you want to scan.



#### \* Scanning Vertically Aligned Text

When scanning vertically aligned text, please scan the text in top to bottom fashion and have the characters centered at the middle of your pen as indicated by the centre marker line.





### ***\* Scanning Horizontal Text***

When scanning horizontal text, you can choose the left-hand or right-hand option and please the pen on the text, moving from left to right or right to left depending on the option you have set previously.



**Right hand: Scanning from left to right or Scanning from right to left**



**Left hand: Scanning from left to right or Scanning from right to left.**

***Note: Penpower mini ScanEYE II is able to scan and recognize one row of characters at any time, please place the pen in such a way that the centre marker is at the centre of the character.***

### **3.3.3 Speech**

mini ScanEYE II can speak English, Mandarin and Cantonese. When select Traditional Chinese or Simplified Chinese as the Recognition Language in the Recognition setting, it will be able to speak **Mandarin** and **Cantonese**. When select **English**, you can choose speak or none speak.

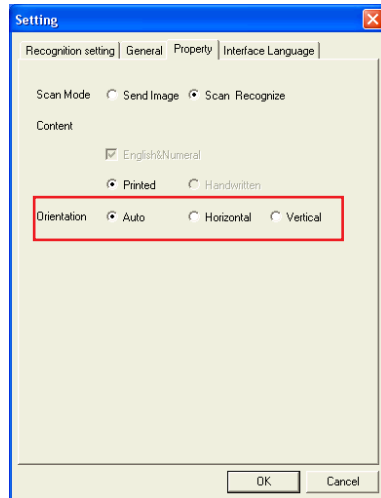
***Note: mini ScanEYE II does not provide Japanese and Korean speech.***

### 3.3.4 Scanning Horizontal or Vertically Aligned Text

When you install the Penpower mini ScanEYE II, the default setting for the text direction is detect automatically. However, you can manually set the desired text direction of your choice and start scanning too. You can still leave it at default being detected automatically but however, as mini ScanEYE II will need to detect the text direction, scanning speed will be slower too.

If you know that all your text is in a certain direction, you can set the mini ScanEYE II to scan in only one direction based on the setting just discussed: **Horizontal** or **Vertical**.

Go to the **Property** tab and choose your desired text direction under **Orientation**.

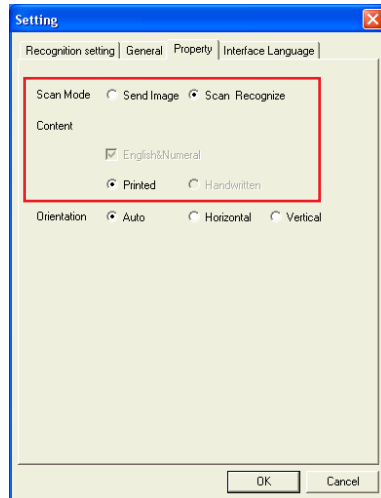


### 3.3.5 Property Settings

In **Property** Settings, provides selection of **Scan Mode** and **Content**. Depend on your desire to select **Scan Mode**. If you select **Send Text**, it will scan and recognize text to your computer. If you select **Send Image**, it will send the scanned image to your computer.

***Note:** When you use Send Image, you need to run the software which supports image format such as MS Word.*

You can depend on the document you want to scan to select **Content**. It provides Chinese, Japanese, Korean, English & Numeral, **Printed** or **Handwritten**. Select identical language for higher accuracy.



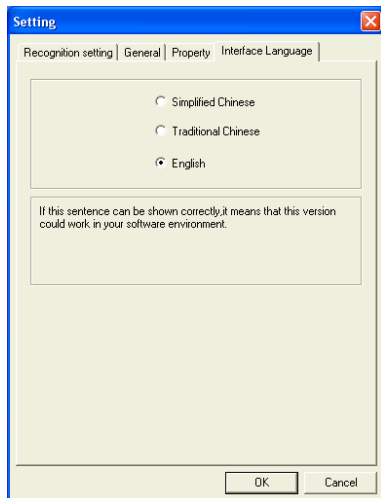
***Tip:** When scanning handwritten text, the scanning results may vary according to handwriting, so the optimal recognition can be achieved when the text is properly aligned and the size must be within the scanning range of the pen.*



### 3.3.6 Interface Language Settings

Interface Language Settings can let you choose Traditional Chinese, Simplified Chinese or English for user interface language. After choosing the language, you may check the description.

If the description does not display properly, which means your Windows OS does not support the language display. Please choose another language.



### 3.3.7 Practise

According to what has been discussed previously, please scan the illustrated text below, in a horizontal and vertical fashion. Do not introduce abrupt changes when scanning, i.e the speed of moving your pen or scanning too fast.

If you have successfully scanned the text with the correct recognition results, you are now ready to put mini ScanEYE II to actual use!

蒙恬掃譯筆中文辨識掃描翻譯

蒙恬掃譯筆中文辨識掃描翻譯

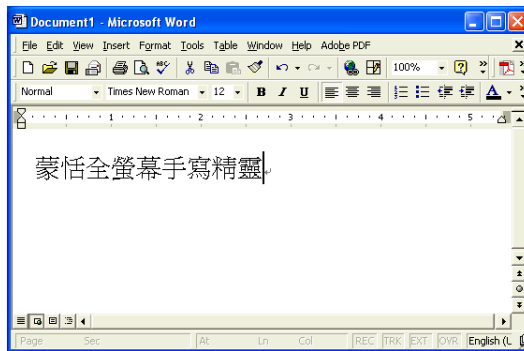
### 3.4 Using Balloon UI

Click [Balloon Interface] button can launch Balloon Interface function.



When using mini ScanEYE II in Balloon UI, all scanning results will be directly transferred to the desired application.

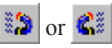


For example, scan “蒙恬全螢幕手寫精靈” into MS Word continuously.

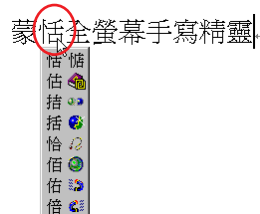


#### 3.4.1 Correct a Certain Character

When you want to correct a certain character, all you need to do is to leave your cursor on the character for 1-2 seconds and a window showing a list of suggested corrections will be presented to you. This will enable you quicker correction and a faster way of inputting characters into your desired application.

**Tip:** *You only need to leave your cursor on the character, you do not need to click any buttons.*

When the pop up window appear, you will have a list of suggested corrections, character combination buttons  or  hover your cursor over the display original text button .



#### \*. Candidates

If you find a incorrect character in your result box, you can use the candidate function to replace with the correct character.

1. As per the illustration, the character has been recognized incorrectly.


- 2. Leave your cursor on the character for 1-2 seconds and a window showing a list of suggested corrections will be presented.
- 3. If the correct character appears among the list of characters presented, you can click on the character to have your current incorrect character replaced.
- 5. Lastly, notice that the wrong character has been replaced.



**\*. Pre-emptive Linking**

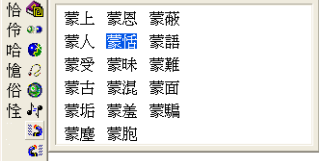
In any continuous text (2 characters), the first character is the second character’s uplink, while the second character is the first character’s downlink. For example 科技, where 科 is 技’s uplink, while the character 技 is 科’s downlink.


- 1. When using the mini ScanEYE II, the recognition results will be directly transferred to the desired application.
- 2. As shown in the illustration, the character 恬 has been recognized incorrectly as 恰 as well as 科 which also has been incorrectly recognized as 料.

- 3. Leave your cursor on the character 恰 for 1-2 seconds and a window will pop up listing possible characters. In the pop up window, click on the magnet which is facing left (uplink)  and you will notice another pop up window which shows you a list of combination which the system thinks are possible replacements for the resulting recognition.

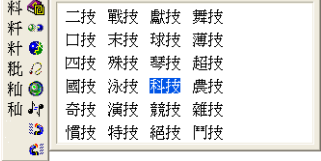
蒙恰料技

蒙恰料技



- 4. Leave your cursor on the character 料 for 1-2 seconds, which will once again invoke the pop up window with the list of possible replacements. This time round, click on the magnet which is facing right (downlink)  and the very same panel will pop up again with a list of combination of characters for you to choose from.

蒙恰料技



- 5. After the correct combination, the correct resulting text will now appear in the result box.


蒙恬科技

*Note: Only Chinese recognition language provides combination list.*

### \*. Character Combination

When the strokes in a character are distanced too far from one another, they are usually recognised as different characters rather than 1 character. Now you can actually make use of the inbuilt character combination function and combine both characters into 1 single character.

Scan the characters 棟樑 and assuming that the result do not appear correctly, you might get 木東樑 as illustrated in the figure. As there might be some varying issues, now the character has been split into 2 different characters, being 木 and 東.

Leave your cursor on the character 木 for 1-2 seconds and a window will pop up with a list of buttons. Click on the second button  (INSERT PICTURE HERE) and you will have the separate characters combined into a single character 棟.



### \*. Character Split

On the contrary, when the strokes in 2 characters are too close to each other, they may be recognized together as 1 character. The character split function can be used to split the strokes into 2 separate characters.

Scan the characters 日月星辰, assuming that both the characters 日 and 月 are being recognized as 1 character, resulting in 明. As both the characters are too close to each other, they are being recognized as 1 character by the system, resulting in 明星辰.


Leave your cursor on the character 明 for 1-2 seconds and a window will pop up with a list of buttons. You can click on  (INSERT PICTURE HERE) to split up the character 明 into 2 characters, resulting in 日 and 月.









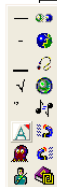
### \*. Phrase Correction

In Full Screen mode if you wish to enter a common phrase such as an idiom, if you aren't sure of how to write one of the characters you can substitute a similar sounding character instead. If you are not sure of the character's pronunciation either, choose any at random. When you have finished writing the phrase, select the uncertain character with the mouse then click on the phrase correction button . The system will examine the four characters before or after this particular character to guess what you meant and make the change.

1. When entering an idiom in Full-Screen mode such as 『 揠苗助長 』, if you are not sure of how to write the character 『 揠 』, you can enter the character 『 一 』 instead to input 『 一苗助長 』.
2. Move the mouse over the character 『 一 』 and pause for a moment to bring up the “Candidate Characters Window”. Click the phrase correction button  and the 『 一 』 character will be changed to 『 揠 』.
3. If the phrase correction function came up with multiple candidate words, these will be shown in the candidate words window for you to choose from. For example, if the input was 『 股份一限公司 』 when you pause the mouse cursor over the 『 一 』 character, this will bring up the “Candidate Characters Window”. Pressing the phrase correction button  will bring up a list of all phrase correction candidate words for you to choose and make the correction with.

一苗助長

一苗助長



揠苗助長


股份一限公司

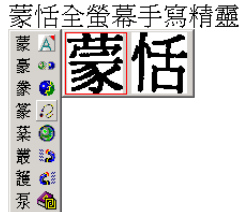


**Note: Only Chinese recognition language provides Phrase Correction function.**


### 3.4.2 Displaying Original Image

After making changes to the results, you can check your original scan to look at the difference and look at the original text when scanned.

Leave your cursor on the character for 1-2 seconds and a window will pop up with a list of buttons. Hold down the third button  from the left and you will see the original text being displayed.




### 3.4.3 Punctuation in Balloon UI

Click on  (INSERT PICTURE HERE) and a panel listing of punctuation marks will be displayed accordingly, allowing you to input half shaped or full shaped punctuation marks.

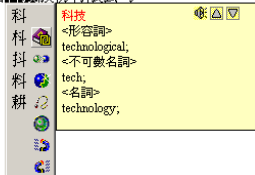


### 3.4.4 Online Translation

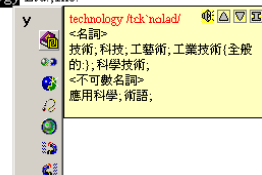
The Balloon Interface provides you the online translation function. Whenever you do not know the scanning Chinese or English words, you may check the translation via the online translation function.

When moving your cursor over the scanned word, a pop-up window will appear. Click  button to start online translation function. The translation window will close when moving cursor to other area.

蒙恬科技股份有限公司

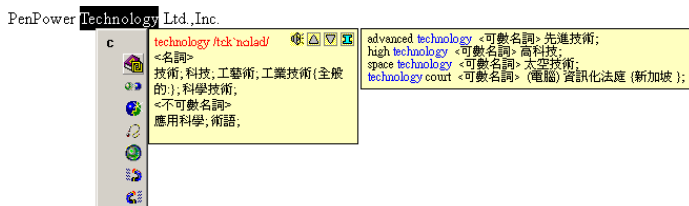


PenPower Technology Ltd., Inc.





In the translation window, you may click button to read out the unfamiliar Chinese or English words aloud. Click or to check the last or next word. Click to see phrase and further explanation.



*Note: Only Chinese and English recognition language provides Online Translation function.*

### 3.5 Displaying Original Image

Click [Original Image] button on the tool bar to open the **Original Image** windows. Then you can check your original scanned image to compare with the original text when scanning.

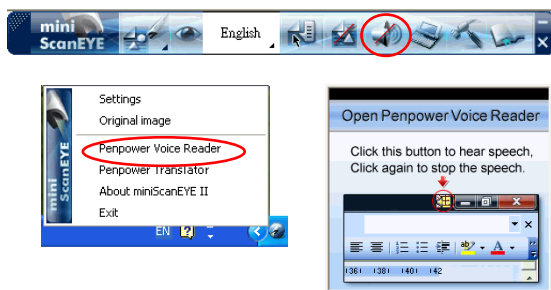



## Chapter 4 Penpower VoiceReader

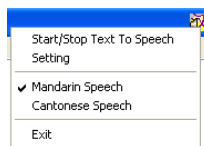
Penpower VoiceReader utilizes a state of the art text-to-speech technology, it will read in fluent Mandarin or Cantonese of any articles. You can use it as a tool for fast proofreading or in teaching the correct Mandarin/Cantonese pronunciation.



### 4.1 Open Penpower VoiceReader

1. Click **[VoiceReader]** button from the toolbar or **[Penpower VoiceReader]** from the tray icon menu to run Penpower VoiceReader.



2. When it starts up, there will be an icon on/off button  on the top right corner of your application, such as Word. You can click the icon to select **Mandarin Speech** or **Cantonese Speech**.



3. Highlighting any paragraphs, click  and select **[Start/Stop Text to Speech]**, the selected paragraph will be read out. Check your speaker if there's no sound.
4. During reading, click , and selecting **[Start/Stop Text to Speech]**, it will stop reading.



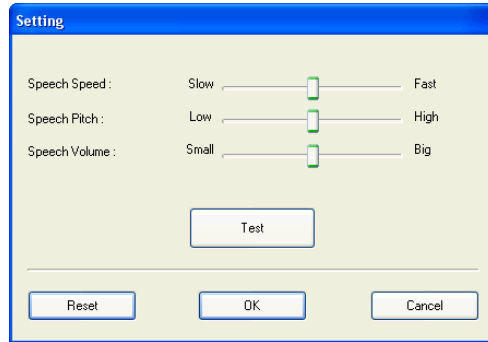
## 4.2 VoiceReader Setting

Click , select [Setting], the [Setting] window will appear.


**Speech Speed:** Adjust speak speed.

**Speech Tone:** Adjust tone level.

**Speech Volume:** Adjust speak volume.



## 4.3 Turn off Penpower VoiceReader

1. Click , select [Exit].
2. When you see the following image, the Penpower VoiceReader is turned off and the icon on the upper right corner disappears.

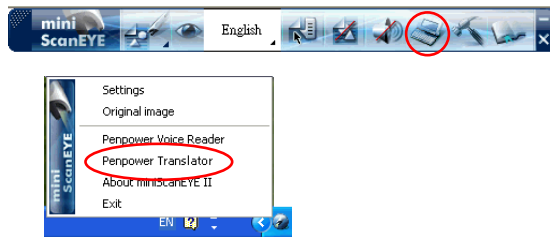


## Chapter 5 Penpower Translator


This is a Chinese-English bidirectional translation software, which includes Chinese-English/English-Chinese dictionary lookup and Chinese-English/English-Chinese phrasal translation.

### 5.1 Open Penpower Translator

Click [Translator] button from the toolbar or [Penpower Translator] from the tray icon menu to run Penpower Translator.



### 5.2 English Character Dictionary Lookup

1. Click on .
2. On the top left hand corner, enter the English word that you want to look up in the dictionary and hit Enter. The explanation in Chinese will pop up almost immediately.





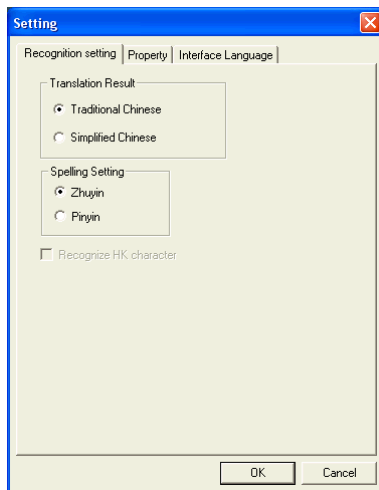
There are a number of buttons which you can see the usage example or the detailed explanation.

Click will command the system to read out the character.

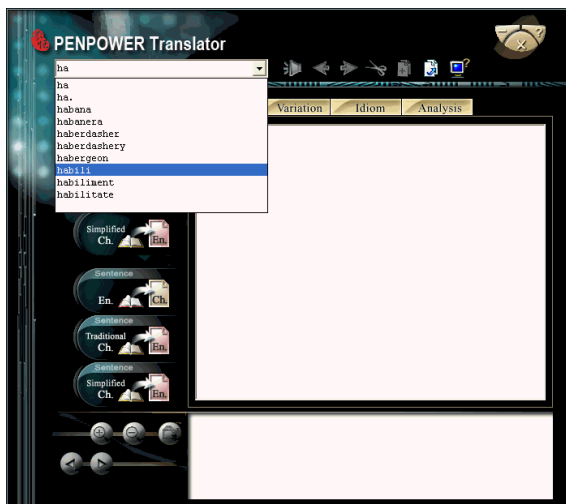
**Previous Word** **Next Word** buttons let you check the meaning of the next character or the previous one.

Click **Copy** button to copy the selected contents.

Click **System Setting** button to invoke the **Setting** window for setting recognition language recognition results, document Property and Interface language .



*Tip: Due to the pre-emptive nature of the Translator, you do not need to input the characters completely. Hitting Enter will usually let the system complete the word and translation for you.*

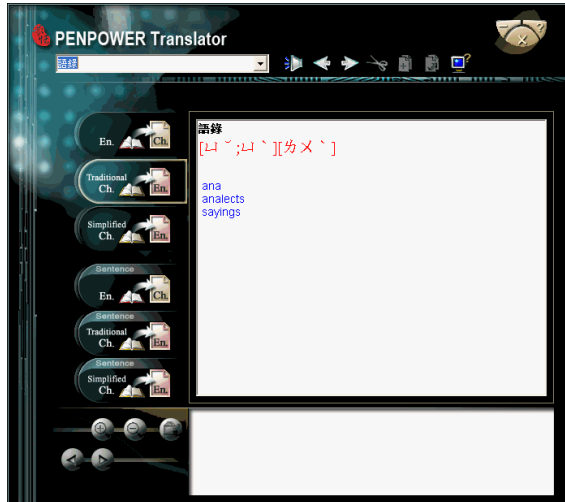



## 5.3 Chinese Character Dictionary

1. Click on  to enable the Chinese dictionary.

*Tip: If the Chinese word you wish to look up is Simplified Chinese, please select the  translation option.*

2. In similar fashion, input the Chinese character that you want to look up in the text field in the top left hand corner. Hit Enter and the system will present the explanation in English.





Click  to listen the pronunciation.

Click **Previous Item** / **Next Item**  buttons to check the meaning of the next character or the previous one.

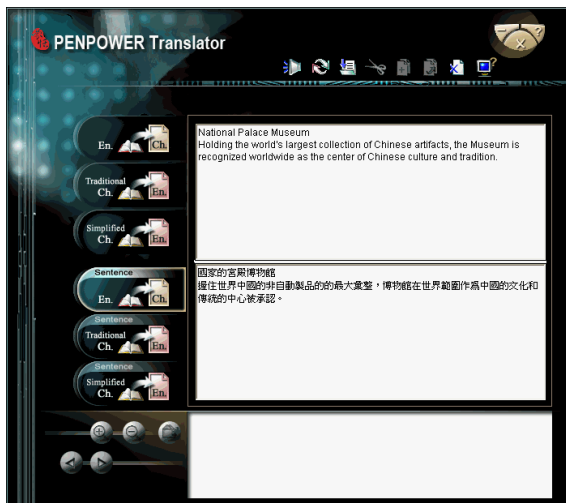




## 5.4 English Phrasal Dictionary


1. Click on  to enable the English phrasal dictionary.
2. In the top left hand corner, input the text to be translated and explained in the field and click on  to translate.


*Tip: During English phrasal translation, avoid inputting Chinese half-shaped punctuation to increase the translation accuracy.*





Click **Read**  button to read all information from window you selected.

Click **Save**  button to save the translated information to text file.


Click **Cut**  button to cut the selected contacts.

Click **Copy**  button to copy the selected contents.


Click **Paste**  button to paste the selected contacts.

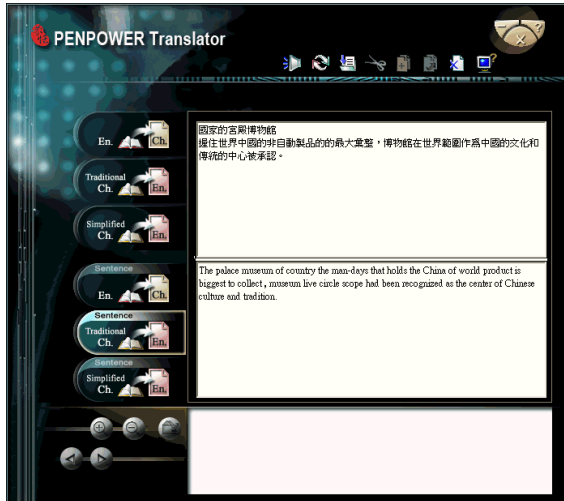
Click **Delete**  button to delete the selected contacts.

## 5.5 Chinese Phrasal Dictionary

1. Click on  to invoke the Chinese-English translation.

*Tip: If the Chinese sentence you wish to look up is Simplified Chinese, please select the  translation option.*

2. In the above frame, input the phrase or paragraph where appropriate and click on  to start the translation. The result will be displayed in the frame below.



Click **Read**  button to read all information from window you selected.







## 5.6 Translating Scanned Input

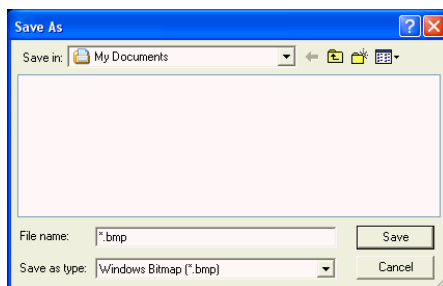
Other than checking up on words or phrases through the use of keyboard, you can also make use of mini ScanEYE II to input the phrase for you, while the original text will be displayed at the bottom of the window for you.




When translating a single word, inputting the word with Scaneye will let you input the complete phrase. Every push on the button on the pen will incur the translation on the next word and so forth.

Clicking on the **Previous Word**  or the **Next Word**  button will allow you to scroll through to the next or previous character in Translator's dictionary database, allowing you to look up on more meanings on the word's variants.

You can **zoom in**  or **zoom out**  to adjust the size of your scanning proportionally. You can also save the scan as a picture by clicking on .



You can also translate the whole paragraph of the scanning you have made with mini ScanEYE II by clicking on  which will in turn translate whatever you have scanned into the opposite language. You can perform the translation phrase by phrase, or choose to have the translation done to the whole paragraph at one time.



You will not be able to use the **Previous Word**  / **Next Word**  buttons when you are in phrasal translation mode.



# **Penpower mini ScanEYE II V2.3 User Manual**

Edition: Released in March, 2009

Penpower Technology Ltd.,