

# **Penpower WorldPenScan**

## **User Manual**

Version: 1.0

Edition: Released in June, 2009

# **Penpower Technology Ltd.**

## **Software User License Agreement**

You are licensed to legally use this software program (“the Software”) by Penpower Technology Ltd (“Penpower”) under this license agreement (“The Agreement”). If you do not agree with any of the provisions in this Agreement, please do not install, copy or use the Software. By using the Software, you are deemed to fully understand and accept the provisions of this Agreement.

### **1. Intellectual Property**

All intellectual property rights in the Software, together with all information and documents included in the packaging for the Software (including but not limited to copy-rights), are property of Penpower, and are protected by relevant laws and regulations.

### **2. License to Use**

You are authorized to use the Software on one (1) single computer only. You may not use the Software on any other machines other than the said single computer.

### **3. Authority to Copy**

The Software and all documents included with the Software, and copyright thereof, are property of Penpower. You are licensed to make one (1) copy of the Software for your personal backup purposes. All other acts of copying are strictly prohibited.

You may not sell, lease, disassemble, reverse engineer, copy, translate, adapt or derive the Software, or obtain the source code of the Software by any other means. You may not use the Software for any purposes other than those permitted under this Agreement.

### **4. Business Users**

If you need to install or use the Software on more than one (1) computer, please contact Penpower or our local distributor to purchase a license for the additional use.

### **5. Liability**

You agree to indemnify Penpower against all losses, costs, debts, settlement payments or other expenses (including but not limited to attorneys fees) arising from your breach of this Agreement, and you agree to compensate Penpower for all of the abovementioned damages.

### **6. No Warranty**

Effectiveness of a packaged software in handling information is closely related to its software and hardware environment. The Software is published following careful development and product testing by Penpower, but Penpower is not able to conduct tests based on all possible combinations of software and hardware environment. Therefore, Penpower is unable to promise nor warrant that there will be absolutely no risk of loss or damage of information, or any other kind of loss, during installation and/or execution of the Software. You must be fully aware of your risks in using the Software.

Penpower will provide you with the Software and support services in respect of the Software to the maximum extent permitted by law. However, Penpower does not warrant that the Software and information included in the package of the Software contain no defects or errors. Penpower is not liable for any indirect, special or incidental loss arising from the Software, including but not limited to loss of profits, damage to business reputation, cessation of work, hardware malfunction or damage, or any other commercial damage or loss arising from commercial use of the Software.

#### **7. Limitation of Liability and Damages**

The maximum amount of compensation payable by Penpower, in respect of any damage incurred by you for any reason under this Agreement, is limited to the amount you have already paid to Penpower in respect of the Software.

Under no circumstances will Penpower be held liable for the possibility of loss, notwithstanding Penpower may be aware of the possibility of such loss.

#### **8. Prohibition Against Sublicense**

You are prohibited to assign the license in respect of the Software granted to you under this Agreement, or to grant a sublicense to another person.

#### **9. Jurisdiction**

With regards to any disputes arising from this Agreement, Penpower and you agree that the court having jurisdiction over the business location of Penpower will be the court in the first instance.

#### **10. Miscellaneous**

In the event that any provision of this Agreement is found to be invalid at law, such invalidity will not affect the validity of any other provisions, or the legal enforceability of such other provisions.

In the event that the Software cannot be executed under conditions of normal use, due to any damage to the original disk/s, Penpower will replace the disk/s free of charge.

# Contents

<b>Chapter 1 Product Features .....</b>	<b>1-6</b>
<b>Chapter 2 Installation .....</b>	<b>2-1</b>
2.1 System Requirements .....	2-1
2.2 Hardware Specification .....	2-1
2.3 Software Installation.....	2-2
2.4 Hardware Installation .....	2-4
<b>Chapter 3 Scanning and Settings.....</b>	<b>3-1</b>
3.1 Running Penpower WorldPenScan.....	3-1
3.2 WorldPenScan Toolbar .....	3-1
3.3 Scan to Computer .....	3-3
3.3.1 Scan & Recognize.....	3-3
3.3.2 Send Image .....	3-3
3.4 Online Translation .....	3-4
3.5 Settings .....	3-5
3.5.1 Recognition Settings.....	3-5
3.5.2 General Settings.....	3-6
3.3.5 Property Settings.....	3-8
3.5.3 Translation Website Settings.....	3-9
3.5.4 Interface Language Settings.....	3-9

There may be newer versions of the software that was released during or after this product's manufacturing date. If the content in the User Manual differs from the on-screen interface, please follow the instructions on the on-screen interface instead of the User Manual.



## Chapter 1 Product Features

The WorldPenScan, the highest-rated text-reader device on the market, scans and converts English, French, German, Italian, Spanish, Japanese, Korean, Simplified Chinese, and Traditional Chinese text into computer-friendly data via USB interface. With an ergonomic design, the WorldPenScan provides a comfortable grip that suits both left and right-handed users. Scan away effortlessly and watch the text appear on your word processor immediately. The WorldPenScan serves as the perfect tool for students, secretaries, journalists, and anyone needing to convert printed text in a short amount of time.

### **\* Minimize your typing**

Scan and edit printed words, sentences, or even entire excerpts with a single stroke of your hand. The WorldPenScan scans over 800 words per minute and seamlessly displays the text on your computer screen, allowing for immediate electronic editing with no wait. Save your time and let the WorldPenScan retype for you.

### **\* Use it around the world**

The world is getting smaller by the day and the language barrier is remaining the same. With the WorldPenScan being able to scan English, French, German, Italian, Spanish, Japanese, Korean, Simplified Chinese, and Traditional Chinese, you'll be able to use it while traveling around the globe.

### **\* Learn new languages**

Learning new languages is both a difficult and time-consuming process. The WorldPenScan aims to help you out with its ability to scan text of one language and immediately translate it to another in one click. Scan French, then read English with just a click of the pen.

### **\* Ergonomic design**

The lightweight and comfortable design of the WorldPenScan suits both left and right-handed users. As you scan, the grip will feel exactly like your everyday pen, providing comfort for those long hundred-page scans.

### **\* Your own personalized pen**

The WorldPenScan includes a cutting-edge auto-calibration system that maximizes scanning according to how you hold a pen and how quickly you scan. Don't change your habits to suit the WorldPenScan, let the WorldPenScan change to suit you.



## Chapter 2 Installation

### 2.1 System Requirements

- Pentium II 300 CPU or above
- 256MB of RAM
- 250MB of available hard disk space
- Windows 2000/XP/Vista OS
- CD-ROM Drive
- USB port

### 2.2 Hardware Specification

- Dimensions: 130mm x 37mm x 18.5mm
- Weight: 30g (excluding USB Adapter)
- Interface: USB 2.0
- Scanning speed: 15 cm/sec.
- Character size: 5~22 pt



#### ***Function button:***

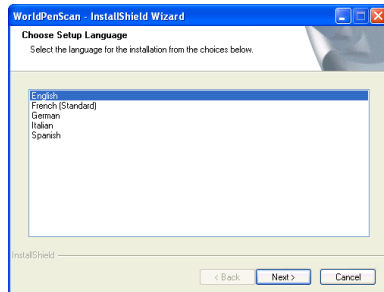
While scanning text, clicking the function button will function as the “**Enter**” key on the keyboard. The function key during the Online Translation mode will translate the next word in the scanned sequence.



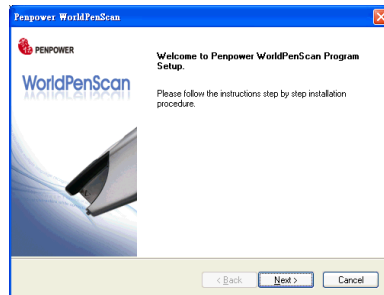


## 2.3 Software Installation

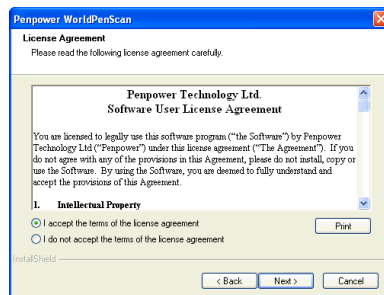
1. Insert the WorldPenScan setup CD into the CD-ROM drive. The installation program will start automatically. Please select an installation language and click **Next** to install.



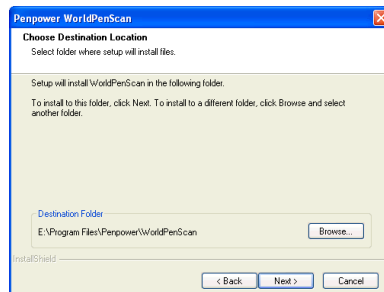
2. Click **Next** to install.



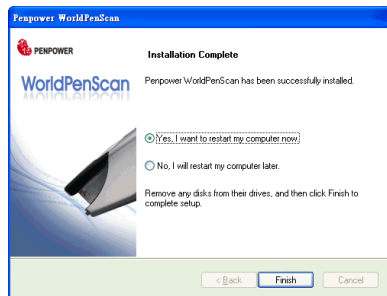
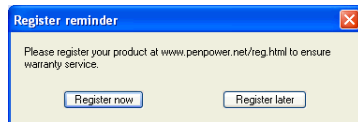
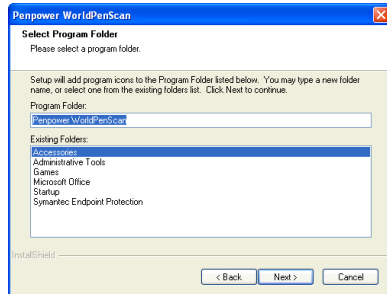
3. Please read the License Agreement, select **I accept the terms of the license agreement** and click **Next** to continue.



4. Select a destination folder to install the software to. Click **Next** to continue.



5. Choose the program folder that you want to install WorldPenScan to. If left as default, the software will create a new folder for you. Click **Next** to continue.
6. After installation, a registration reminder appears. Please click on **Register now** to register and receive the warranty service. You can also click **Register later** to close the reminder. When you need to register, click on the **About** button from the toolbar and then click on Registration.
7. Your computer must restart for the WorldPenScan software to function. Select one of the options and then click **Finish** to restart your computer or to continue using your computer.



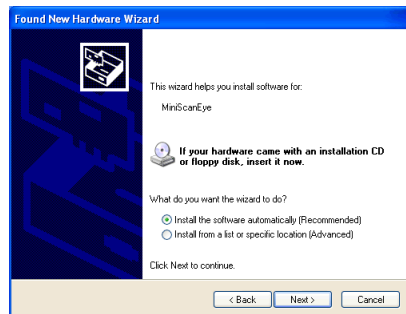


## 2.4 Hardware Installation

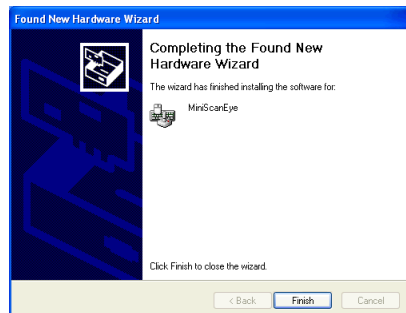
1. Plug in the WorldPenScan pen into your computer's USB port and a window will appear. Select **[No, not this time]** and click **Next** to continue.

*Note: Some computers may shut down accidentally after connection. This is due to the lack of power to support several USB devices. To avoid this problem, connect your WorldPenScan and other USB devices to an extra-powered USB hub.*

2. Select **[Install the software automatically]** and click **Next** to continue.



3. Click **Finish** to end the installation.



*Note: When connecting the WorldPenScan pen to another USB port, follow these same steps to install again.*

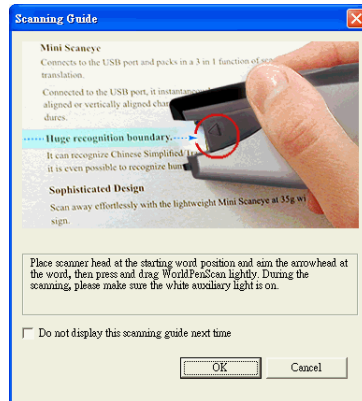
## Chapter 3 Scanning and Settings

### 3.1 Running Penpower WorldPenScan

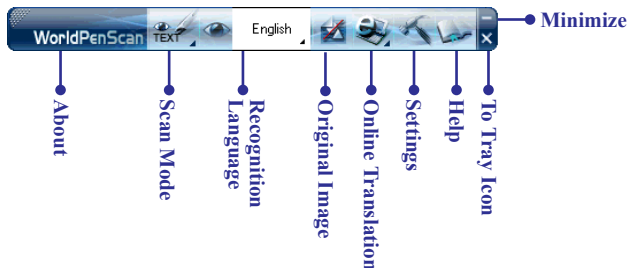
Go to [Start/All Programs/Penpower WorldPenScan/Penpower WorldPenScan] or double-click the  shortcut on the desktop to start the WorldPenScan toolbar.



When running the WorldPenScan, the Scanning Guide will appear. Please use the WorldPenScan according to the Scanning Guide.

*Note: If you would not like to read the message again, you can check off [Do not display this scanning guide next time], and click [OK].*



### 3.2 WorldPenScan Toolbar








1. **Scan Mode** : Provide [Scan & Recognize] and [Send Image], click  to select scan mode. If you select the [Scan & Recognize], it will recognize and display the text on your computer. If you select the [Send Image] mode, it will display the scanned image to your computer.











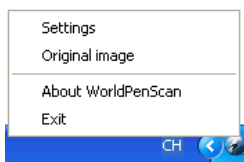
*Note: When you use the Send Image mode, you need to have an image-supporting software running i.e. Microsoft Word.*



2. **Recognition Language**  English : • The WorldPenScan can recognize English, French, German, Italian, Spanish, Korean, Japanese, and Simplified/Traditional Chinese text. Click  select the language of the text you would like to scan.
3. **Original Image**  : Displays the scanned images. You can check the scanned image to compare with the original text when scanning. This can help you improve your scan technique for more accurate recognition results. Click  or  to toggle on or off the original image display.





4. **Online Translation**  : The WorldPenScan provides a translation function in which you can assign a translation website to translate scanned words. Please refer to **3.4 Online Translation** for a more detailed explanation.
5. **Settings**  : Please refer to 3.5 Settings for more detailed information.
6. **Help**  : Opens the user manual.
7. **Minimize**  : Click  to minimize the toolbar to Taskbar.
8. **Minimize to Tray Icon**  : Click  minimize the toolbar into a tray icon. Double-click the tray icon on the bottom-right of the screen to open the toolbar. Right-click  to open the function menu.



## 3.3 Scan to Computer


### 3.3.1 Scan & Recognize

1. Select [Scan & Recognize]  from [Scan Mode].
2. Select the language of the text that you would like to scan from [Recognition Language]  English .
3. Open any word processor (i.e Microsoft Word or Wordpad) and click the location where you would like the WorldPenScan to start.
4. Place a document on a flat surface and place the scanner tip at the start of your desired scan area. Aim the arrow at the desired area, then press and drag the WorldPenScan pen in a straight line across the area. During the scanning, please make sure the white auxiliary light is on. Stop applying pressure to the pen to stop scanning. The scanned text will display in your word processor.

### Business Card Recognition System

*Note: Penpower WorldPenScan is able to scan and recognize one row of characters at a time. Place the pen so the Scan Tip arrow points at the center of the line.*


### 3.3.2 Send Image

1. Select [Send Image]  from [Scan Mode].
2. Open a word processor that is able to display images (i.e Microsoft Word) and click the location that you would like to display the scanned images.
3. Place a document on the table and place the scanner head at the starting word or picture and aim the Scan Tip arrow at the center of the scan area, then press and drag the WorldPenScan pen in a straight line. The white auxiliary light from the Scan Tip indicates the pen is scanning. The scanned picture will display on your word processor in an image format.





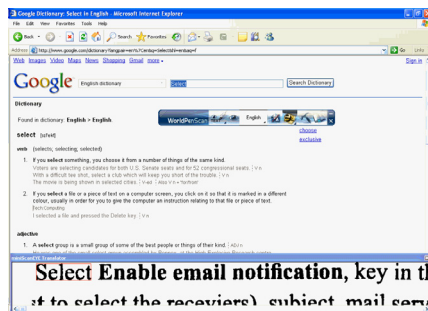
### 3.4 Online Translation

1. Click **[Online Translation]**  and select a translation Website from the toolbar. The software will then open Internet Explorer, open the translation Website, and then open the WorldPenScan Translator window.

***Tip:** You can organize Website Links from the Translation Settings function. Please refer to 3.5.3 Translation Settings for more detailed information.*


2. Place a document on the table and place the scanner head at the starting word or picture and aim the Scan Tip arrow at the center of the scan area, the press and drag the WorldPenScan pen in a straight line. The white auxiliary light from the Scan Tip indicates the pen is scanning. The scanned area will display on the **[Original Image]** portion of the screen and the first recognizable word will be translated.
3. The translation result of the first recognized word will be displayed in the web browser. The original scanned image will also be shown in the WorldPenScan Translator window as well.

***Note:** If the web site does not support the enter function, please manually click the translate button on the website with your mouse.*



4. If you have scanned more than one word, you can press the function key on the pen to see the translation of the next recognizable word.

***Note:** If the Website does not support enter function, it also cannot support hardware button. Please scan next word instead.*

5. Click **[Online Translation]**  or close the WorldPenScan Translator window to go back to the Scan Mode.

## 3.5 Settings

Click on [Settings]  from the toolbar to configure the operational functions.

### 3.5.1 Recognition Settings

In the [Recognition Setting] page, you will find the Recognition Language options.

#### \* Recognition Language

Change the Recognition Language to the language of the desired scan text.

#### \* Recognition Results

If you select Traditional Chinese or Simplified Chinese, you can select which language you would like the WorldPenScan to type out.

No matter whether the text is Simplified or Traditional in, the WorldPenScan will type out the characters in the selected language.

Select the type of Chinese for the inputting Chinese characters.

#### \* Recognizing HK Character

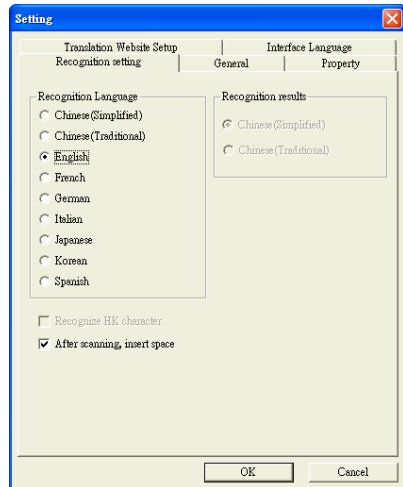
If you select Traditional Chinese recognition language, you can select the check **Recognize HK Character** option to recognize Hongkong characters option. Connect to the <http://www.microsoft.com/hk/hkses/default.aspx> to check the Hong Kong characters list.

#### \* After Scanning Insert Space

If you select the English recognition language, you can select the **After Scanning Insert Space** box. While scanning English text, the system will automatically add a space at the end of the scan.

#### \* Balloon Interface

If you select **Traditional Chinese** or **Simplified Chinese** as your recognition language, you can select the **Open balloon interface** for the following functions: correct a certain character, pre-emptive linking, character combination, character split, phrase correction, display original image, punctuation, and online translation.







To display the balloon interface, place your cursor over the scanned Chinese character for 1-2 seconds.



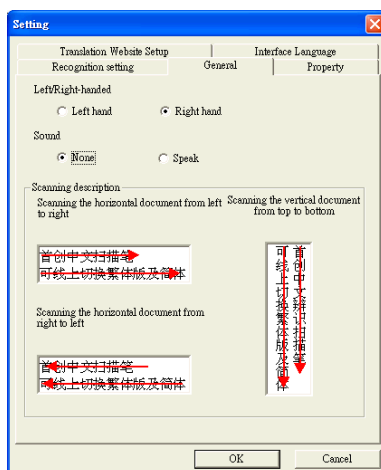
*Tip: The WorldPenScan can scan printed Traditional Chinese text then type out the characters in Simplified Chinese and vice versa.*

### 3.5.2 General Settings

In the [General Setting] page, you can select the appropriate Scan Mode and configure the pen to suit left or right-handed holders.

#### \* Left/Right Handed

According with how you hold the pen to choose **Left hand** or **Right hand**. Left hand users can scan from left to right and right hand users can scan from right to left habitually.



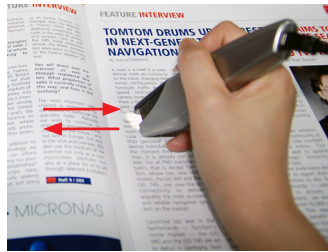
#### \* Scanning Vertically Aligned Text

When scanning vertically aligned text, please scan the text in a straight top-to-bottom fashion. Align the Scan Tip arrow on your pen to the center of the characters.



### **\* Scanning Horizontal Text**

When scanning horizontal text, first choose the left-hand or right-hand option. Then place the pen on the text, move the pen left-to-right or right-to-left depending on the set option to scan.



**Right hand: Scan from left-to-right or from right-to-left**



**Left hand: Scan from right-to-left or from left-to-right**

***Note: The WorldPenScan is able to scan and recognize one row of characters at a time. Please place the pen in such a manner so that the Scan Tip arrow is at the center of the line of text.***

### **\* Speech**

The WorldPenScan program has English, Mandarin and Cantonese text-to-speech capabilities. When selecting **Traditional Chinese** or **Simplified Chinese** as the **Recognition Language**, the WorldPenScan will be able to convert the text into **Mandarin** and **Cantonese** speech. When **English** is selected, the WorldPenScan uses **English** speech.



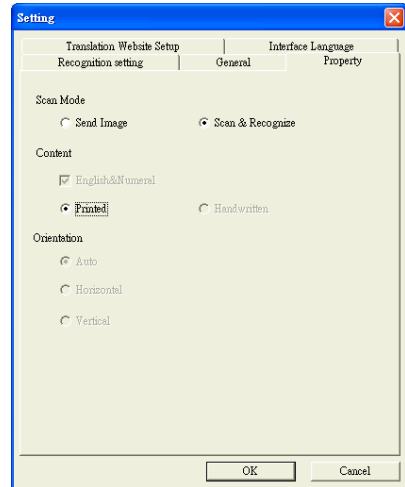
### 3.3.5 Property Settings

#### **\* Scan Mode**

In the **Property Settings** page, you can select **Scan Mode** or **Content**. Select **Scan Mode** to switch between Scan Image. If you select **Scan & Recognize**, it will scan and display text on your computer. If you select Send Image, it will display the scanned image to your computer.

#### **\* Content**

Select **Content** to change settings appropriate for the type of text being scanned. The software supports Chinese, Japanese, Korean, English, Numbers, Printed or Handwritten. Select the appropriate conditions for higher accuracy.



***Note:** The Recognition Language must match the language of the content for optimal accuracy.*

***Tip:** When scanning handwritten text, the scanning results may vary according to the handwriting. The optimal recognition accuracy can be achieved when the text is properly aligned and when the text size is within the scanning range of the pen tip.*


#### **\* Orientation**

When you first use the WorldPenScan, the default setting is automatically detects the direction of the text. However, you can manually set the scanner to scan in a direction of your choice. If left in its default settings, the scanning speed of the WorldPenScan will be slower until the WorldPenScan detects the appropriate text direction.

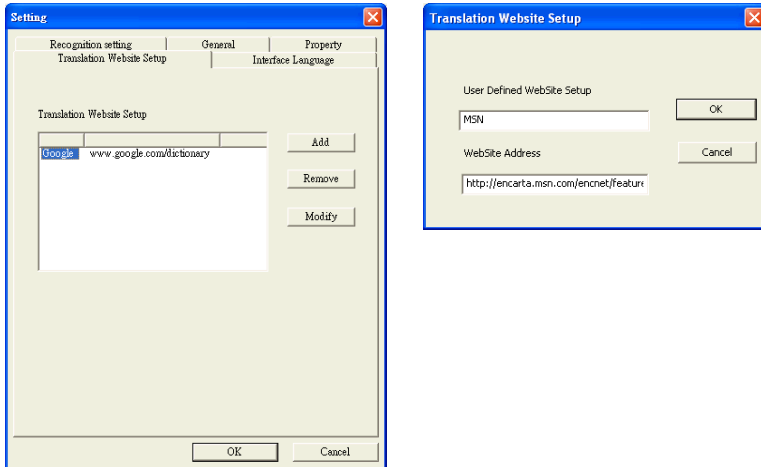
If you already know that all your text all read in a certain direction, you can set the WorldPenScan to scan in that direction using the interface.

To do this, click the **Property** tab and choose your desired text direction under **Orientation**.

### 3.5.3 Translation Website Settings

Translation Website Settings lets you add, remove, and modify online translation websites. The websites will be shown in the Online Translation  button the toolbar.

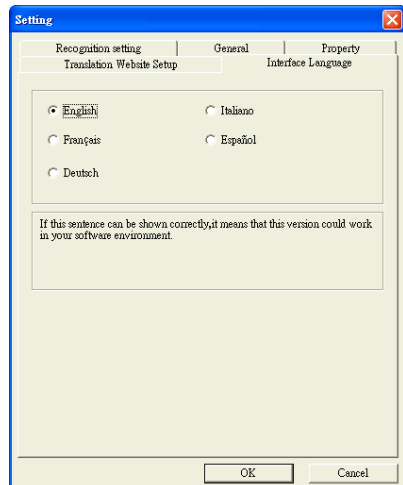
Click the **Add** button to open the Translation Website Setup window. Input the translation website name and its URL address, then click **OK**. You can also modify or remove a website by clicking the **Modify** button or the **Remove** button.



### 3.5.4 Interface Language Settings

The Interface Language Settings option allows you to choose to display the interface in English, French, German, Italian, or Spanish. After choosing a language, check the description area underneath.

If the description sentence does not display properly, your Windows OS does not support the given language display. Choose another language.





# **Penpower WorldPenScan V1.0 User Manual**

Edition: Released in June, 2009

Penpower Technology Ltd.,