

Wireless Pen User Manual

Version: 8.0

Release: June, 2012

Edition: 1

Penpower Technology Ltd.

Software User License Agreement

You are licensed to legally use this software program (“the Software”) by Penpower Technology Ltd (“Penpower”) under this license agreement (“The Agreement”). If you do not agree with any of the provisions in this Agreement, please do not install, copy or use the Software. By using the Software, you are deemed to fully understand and accept the provisions of this Agreement.

1. Intellectual Property

All intellectual property rights in the Software, together with all information and documents included in the packaging for the Software (including but not limited to copyrights), are property of Penpower, and are protected by relevant laws and regulations.

2. License to Use

You are authorized to use the Software on one (1) single computer only. You may not use the Software on any other machines other than the said single computer.

3. Authority to Copy

The Software and all documents included with the Software, and copyright thereof, are property of Penpower. You are licensed to make one (1) copy of the Software for your personal backup purposes. All other acts of copying are strictly prohibited.

You may not sell, lease, disassemble, reverse engineer, copy, translate, adapt or derive the Software, or obtain the source code of the Software by any other means. You may not use the Software for any purposes other than those permitted under this Agreement.

4. Business Users

If you need to install or use the Software on more than one (1) computer, please contact Penpower or our local distributor to purchase a license for the additional use.

5. Liability

You agree to indemnify Penpower against all losses, costs, debts, settlement payments or other expenses (including but not limited to attorneys fees) arising from your breach of this Agreement, and you agree to compensate

Penpower for all of the abovementioned damages.

6. No Warranty

Effectiveness of a packaged software in handling information is closely related to its software and hardware environment. The Software is published following careful development and product testing by Penpower, but Penpower is not able to conduct tests based on all possible combinations of software and hardware environment. Therefore, Penpower is unable to promise nor warrant that there will be absolutely no risk of loss or damage of information, or any other kind of loss, during installation and/or execution of the Software. You must be fully aware of your risks in using the Software.

Penpower will provide you with the Software and support services in respect of the Software to the maximum extent permitted by law. However, Penpower does not warrant that the Software and information included in the package of the Software contain no defects or errors. Penpower is not liable for any indirect, special or incidental loss arising from the Software, including but not limited to loss of profits, damage to business reputation, cessation of work, hardware malfunction or damage, or any other commercial damage or loss arising from commercial use of the Software.

7. Limitation of Liability and Damages

The maximum amount of compensation payable by Penpower, in respect of any damage incurred by you for any reason under this Agreement, is limited to the amount you have already paid to Penpower in respect of the Software.

Under no circumstances will Penpower be held liable for the possibility of loss, notwithstanding Penpower may be aware of the possibility of such loss.

8. Prohibition Against Sublicense

You are prohibited to assign the license in respect of the Software granted to you under this Agreement, or to grant a sublicense to another person.

9. Jurisdiction

With regards to any disputes arising from this Agreement, Penpower and

you agree that the court having jurisdiction over the business location of Penpower will be the court in the first instance.

10. Miscellaneous

In the event that any provision of this Agreement is found to be invalid at law, such invalidity will not affect the validity of any other provisions, or the legal enforceability of such other provisions.

In the event that the Software cannot be executed under conditions of normal use, due to any damage to the original disk/s, Penpower will replace the disk/s free of charge.

FCC Note

This equipment has been tested and found to comply with the limits for a Class B digital device, pursuant to part 15 of the FCC Rules.

- (1) These limits are designed to provide reasonable protection against harmful interference in a residential installation.
- (2) This equipment generates, uses and can radiate radio frequency energy and, if not installed and used in accordance with the instructions, may cause harmful interference to radio communications. However, there is no guarantee that interference will not occur in a particular installation. If this equipment does cause harmful interference to radio or television reception, which can be determined by turning the equipment off and on, the user is encouraged to try to correct the interference by one or more of the following measures:
 - Reorient or relocate the receiving antenna.
 - Increase the separation between the equipment and receiver.
 - Connect the equipment into an outlet on a circuit different from that to which the receiver is connected.
 - Consult the dealer or an experienced radio/TV technician for help.*Without the permission from the manufacturer, please do not modify this equipment arbitrarily.

Contents

| | |
|---|--------------|
| Chapter 1 Product Overview | 1 - 1 |
| 1.1 Product Features..... | 1 - 1 |
| 1.2 Hardware Introduction | 1 - 2 |
| 1.2.1 Hardware Specification..... | 1 - 2 |
| 1.2.2 Hardware Function Introduction..... | 1 - 2 |
| Chapter 2 Installation and Settings..... | 2 - 1 |
| 2.1 System Requirements | 2 - 1 |
| 2.2 Handwriting Software Installation | 2 - 1 |
| 2.3 Hardware Connection..... | 2 - 5 |
| 2.4 Run Wireless Pen Handwriting System..... | 2 - 5 |
| 2.5 Registration | 2 - 5 |
| 2.6 Calibration..... | 2 - 6 |
| 2.7 ID Code Matching..... | 2 - 7 |
| Chapter 3 Wireless Pen..... | 3 - 1 |
| 3.1 Interface Introduction | 3 - 1 |
| 3.2 Handwriting Modes..... | 3 - 2 |
| 3.2.1 Full Screen handwriting Mode | 3 - 2 |
| 3.2.2 Writing Pad Mode..... | 3 - 3 |
| 3.3 Input Tool | 3 - 4 |
| 3.4 Settings | 3 - 5 |
| 3.5 Learning String..... | 3 - 5 |
| 3.6 Custom Phrase..... | 3 - 5 |
| 3.7 AI..... | 3 - 5 |

| | |
|---|------------|
| 3.8 On-Line Translator | 3-6 |
| 3.9 Recitation..... | 3-6 |
| 3.10 Signature..... | 3-6 |
| 3.11 Data Management..... | 3-6 |
| 3.12 Gesture..... | 3-7 |
| Chapter 4 Full Screen Handwriting Mode | 4-1 |
| 4.1 Getting Started to Write..... | 4-1 |
| 4.2 Candidate Words | 4-3 |
| 4.3 Related Phrase | 4-4 |
| 4.4 Symbols | 4-5 |
| 4.5 How to Write in Free Writing Mode | 4-6 |
| 4.6 Bubble Interface | 4-7 |
| 4.6.1 Open and Close Bubble Interface | 4-8 |
| 4.6.2 Candidate Words | 4-9 |
| 4.6.3 Phrase Correction | 4-10 |
| 4.6.4 Artificial Intelligence | 4-11 |
| 4.6.5 Original Script..... | 4-12 |
| 4.6.6 Symbols | 4-12 |
| 4.6.7 Homophone..... | 4-13 |
| 4.6.8 Related word..... | 4-14 |
| 4.6.9 Translation | 4-15 |
| Chapter 5 Writing Pad | 5-1 |
| Chapter 6 Input Tool | 6-1 |
| 6.1 Zhu yin Keyboard..... | 6-1 |
| 6.2 English Keyboard..... | 6-3 |

| | |
|---|-------------|
| 6.3 Hanyu Pinyin Keyboard | 6-4 |
| 6.4 Symbol Keyboard..... | 6-5 |
| Chapter 7 Settings..... | 7-1 |
| 7.1 General Setting | 7-2 |
| 7.2 Chinese Output Setting..... | 7-5 |
| 7.3 Recognition | 7-7 |
| 7.4 Writing Setting | 7-9 |
| 7.5 Tablet Setting..... | 7-12 |
| 7.6 Update Setting | 7-13 |
| Chapter 8 Learning String..... | 8-1 |
| Chapter 9 Custom Phrase | 9-1 |
| 9.1 Add Phrase..... | 9-1 |
| 9.2 Delete Phrase..... | 9-3 |
| Chapter 10 Artificial Intelligence | 10-1 |
| Chapter 11 On-Line Translator | 11-1 |
| Chapter 12 Recitation..... | 12-1 |
| 12.1 Penpower Voice Reader..... | 12-1 |
| 12.2 Reading Setting | 12-2 |
| Chapter 13 Signature..... | 13-1 |
| Chapter 14 Data Management..... | 14-1 |
| Chapter 15 Presenter Mode | 15-1 |

There may be newer versions of the software that was released during or after this product's manufacturing date. If the content in the User Manual differs from the on-screen interface, please follow the instructions on the on-screen interface instead of the User Manual.

Chapter 1 Product Overview

1.1 Product Features

<<Presentation Function>>

- **Built-in slideshow controls:** Next/Previous slide buttons and black screen functions make your presentation more professional.
- **Timer:** The device helps you manage your time during presentations with its built-in LCD timer. The automatic times-up flashing light let you present without worrying about time constraints.
- **Laser pointer:** You can highlight key points in your presentation with the built-in laser pointer.

<<Handwriting Function>>

- **Cursive writing and artificial intelligence recognition kernel:** No particular stroke order is required. Capable of recognizing extremely cursive handwriting accurately. Highly adaptable to the uniqueness of your handwriting and can be used as a personal handwriting system.
- **Slick and intuitive user interface:** The toolbar and interface design provides an intuitive and personalized user experience, enable quick access to frequently used functions. Two writing interfaces for you to choose from: full-screen continual writing interface and writing pad interface. Moreover, we also provide static mode in the writing pad interface as another option.
- **Post-related word/phrase prediction:** Integrate the functions of text prediction and user handwriting pattern learning. The new function can provide you more predicted words, become the smartest predictive text function corpus on the market. The predictive text function will appear instantly right after your handwriting. Moreover, your commonly used words and phrases will be learned and shown first to increase writing efficiency.
- **Work smart and play smart via handwriting:** You can hand write text in Microsoft Office, email, MSN, Skype, QQ, Facebook, Twitter and others.



1.2 Hardware Introduction

1.2.1 Hardware Specification

1. Dimensions: 118mm x 62mm x 16mm
2. Weight: 58g
3. Writing Area: 56mm x 43mm
4. Radio Frequency: 2.4G
5. Transmission Distance: 10m

1.2.2 Hardware Function Introduction

Left Side

Front Side

Back Side

Right Side



Note: There is a protection bag for Wireless Pen in the package. It provides protection for Wireless Pen from leaks and scratches. Always put your Wireless Pen in the protection bag when you are not using it.

1. **Wireless receiver:** Pull out the wireless receiver from the Wireless Pen hardware. Connect the wireless receiver to the USB port of your computer, and the Wireless Pen will connect with your computer wirelessly.

2. **Left button:**

Handwriting Mode: When press the left button, the system will replace the recognized character with the next candidate character. Press again, replace to the next candidate character and so on.

Presenter Mode: In the Presenter mode, the left button acts as the page up function to show the previous page.

3. **Right button:**

Handwriting Mode: It provides 7 Frequently Used punctuation symbols such as **· ° ` : ; ? !**. When press the right button, the system will input the first symbol. Press it again to replace with the next symbol and so on.

Presenter Mode: In the Presenter mode, the right button acts as the page down function to show the next page.

4. **Laser point button:** Press the laser point button to highlight the main points in your presentation with the red laser light.
5. **LCD monitor:** Press the timer setting button (See item 11) after 5 seconds, the LCD monitor will display the left time and alarm you at 2, 5 minutes left and time is up with the gentle red flash. This monitor also displays the current mode information. [P] represents Presenter Mode and [H] represents Handwriting Mode.

6. **Writing/Mouse area:**

Handwriting Mode: Writing in this area.

Presenter Mode: When pull the stylus out, you can use this area as a mouse pad.

7. **Laser light:** When press the laser point button (See item 4), it will turn



this red laser light on.

8. ID matching button: If there is more than two Wireless Pens or other wireless devices around you and interference your writing or presentation, you may push ID matching button to match your Wireless Pen and your wireless receiver. Please refer to 2.7 ID Code Matching for details.
9. Power On/Off switch: While Wireless Pen is not in use, please turn the power off to save the battery life.
10. Battery cover: Push the wedge of the battery cover upward to open the battery cover, and put two AAA batteries in with the positive electrode in the right side. When the electric power is insufficient, the LCD monitor will display “Lo” in the timer screen to remind you to replace the battery.
11. Stylus pen: Pull the stylus pen out to write or use it as a mouse. Place it back, when you do not need to use the stylus pen.
12. Timer setting button: Let you set the presentation time. Press it once, add 5 minutes and so on. The remaining time will display on the LCD monitor. (See item 5)

Tip: Press and hold the [Timer setting button] for a while, you can reset the timer.

13. Side Button (Backspace/Black screen button):

Handwriting Mode: Remove a character before the cursor.

Presenter Mode: Press this button during the presentation to display the black screen. Press it again to display the previous screen.

14. Presenter/Handwriting mode switch: Switch up to the [Presenter Mode]. Switch down to the [Handwriting Mode].

Chapter 2 Installation and Settings

2.1 System Requirements

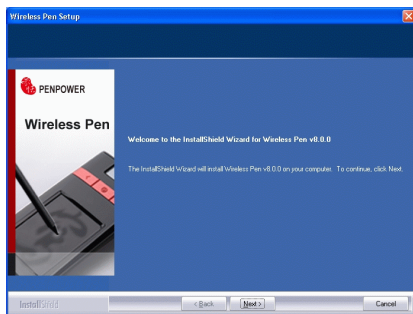
1. Windows 7/Vista/XP
2. 32 bit OS: At least 1GB of available hard disk space
64 bit OS: At least 2GB of available hard disk space
3. USB port

2.2 Handwriting Software Installation

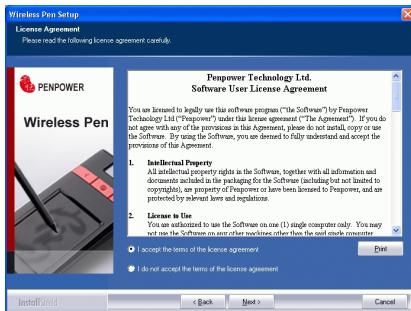
Please insert CD-ROM disc into the CD-ROM drive and the system will automatically launch setup.exe. Select the [Setup Wireless Pen] option.



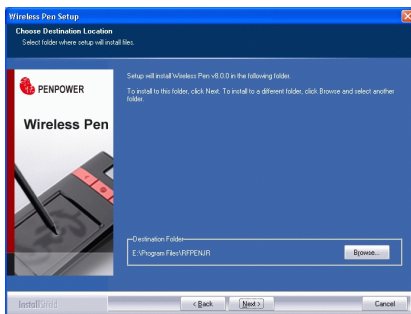
2. Please exit all of the Penpower applications to ensure that the install/repair process will run properly. Click **[Next]** to continue.



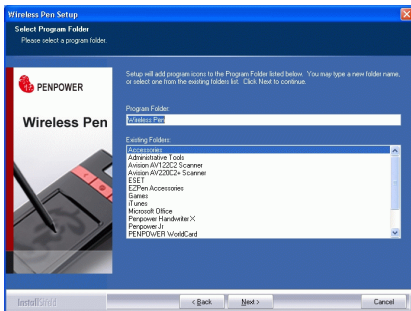
3. Please read the license agreement, select **[I accept the terms of the license agreement]**, and click **[Next]**.



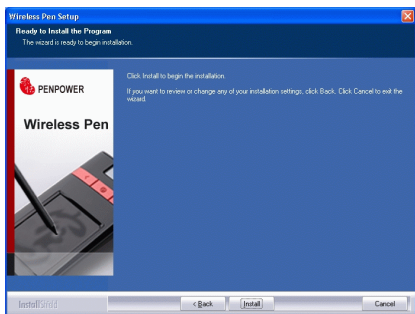
4. Select the destination location. Click **[Next]**.



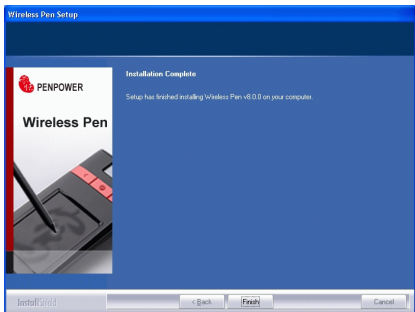
5. Select the program folder. Click **[Next]**.



6. Click **[Install]** to begin the installation.



7. When the installation is completed, click **[Finish]** to exit.



2.3 Hardware Connection

1. Open the battery cover of the Wireless Pen hardware and put two AAA batteries in.
2. Turn on the power. Pull the wireless receiver out from the Wireless Pen hardware, and plug it to the USB port of your computer.

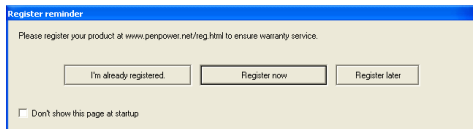
Tip: If any signal interference, you can connect the wireless receiver to an extension USB cable to avoid the interference equipment.

2.4 Run Wireless Pen Handwriting System

Run [Start/All Programs/Wireless Pen/Wireless Pen] to open the Wireless Pen window.

2.5 Registration

A register reminder window will pop up when you launch Wireless Pen for the first time . It reminds you registering your product at <http://www.penpower.net/reg.html> for ensuring the warranty service. Click **[Register now]** to register. If you click **[Register later]**, you may skip it and register later. If you have registered, please click **[I'm already registered]**, this reminder will not display next time you launch this application.






2.6 Calibration

When you first time launch the Wireless Pen, the system will ask you to calibrate the Wireless Pen.

1. Switch the [Presenter/Handwriting mode switch] downward to the [Handwriting mode].
2. Click on the top-left corner spot of touch pad by the writing pen.
3. Click on the bottom-right corner spot of touch pad by the writing pen.
4. Click on [OK] to finish the calibration.




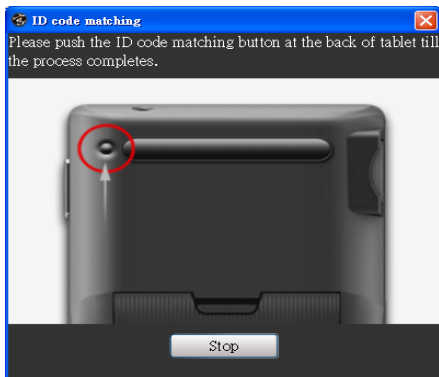
In the future, if you find that your handwriting on the screen is not on the right location, you need to calibrate your Wireless Pen. Please click the menu  icon and select [Settings]/ [Tablet setting]/ [Tablet calibration] to launch the calibration window.

Tip : *After calibration, the new configuration would take effect immediately. You do not need reboot or reload handwriting system.*

2.7 ID Code Matching

After you connected the Wireless Pen and launched the Wireless Pen, you should be able to write right away. If there are more than two Wireless Pens or other wireless devices around you and interfere your writing or presentation, you may match your Wireless Pen and your wireless receiver.

1. Please mouse click the function menu button  and select **[Settings]\ [Tablet setting]\ [ID code matching]** to launch the ID code matching function.
2. Press the [ID matching] button on the back side of the Wireless Pen.
3. An [ID-matching is successful] window appears when the ID matching is done.



Chapter 3 Wireless Pen

3.1 Interface Introduction

After the installation is completed, run [Start]/ [All Programs]/ [Wireless Pen]/ [Wireless Pen] to launch Wireless Pen.



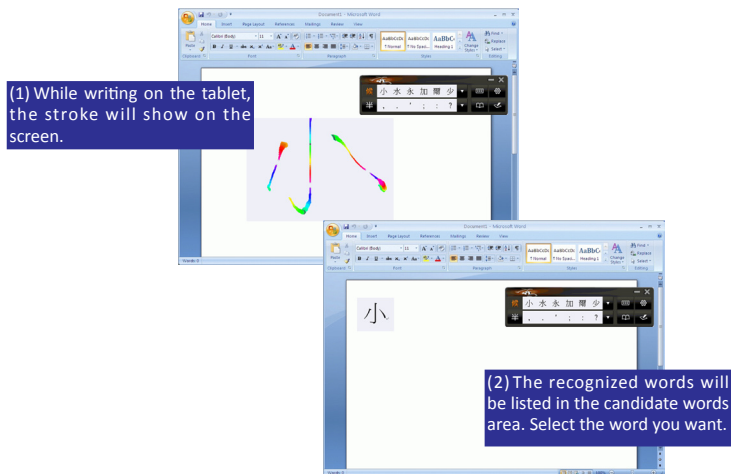
- 候 : Candidate words
- 全 \ 半 : Full-width\ half-width
- 田 : Input tool
- ⚙ : Function menu
- 📖 \ 📖 : Display\ hide post-related words, homophone, and related phrase
- 📝 : Open\ hide writing pad
- 後 : Post-related words
- 音 : Homophone

3.2 Handwriting Modes

Wireless Pen provides two handwriting modes: full screen handwriting mode and writing pad handwriting mode.


3.2.1 Full Screen handwriting Mode

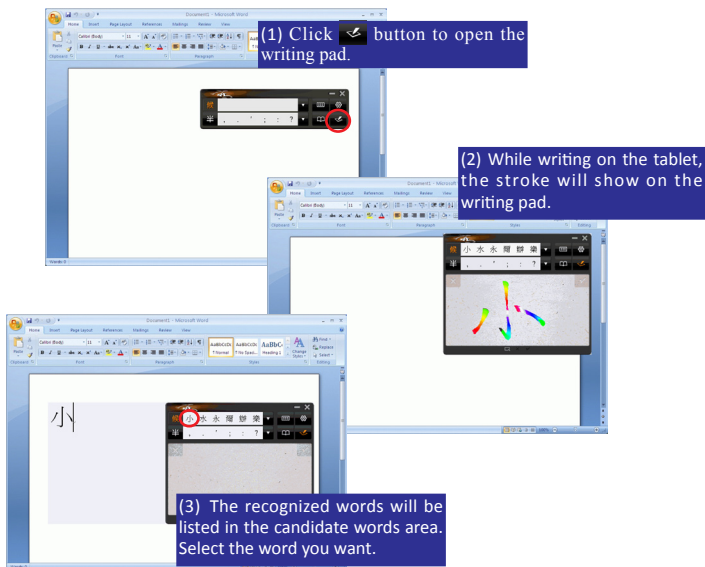
The full screen handwriting mode is the default writing mode in Wireless Pen software. Open any word processor, for example Microsoft Word or WordPad, and write a word on the writing tablet. You can see the stroke shown on the screen. Select the word you want in the candidate words area with your mouse and the word will display on the word processor immediately.



Tip: For more information, please refer to Chapter 5.

3.2.2 Writing Pad Mode


Besides the full screen writing mode, you can also select writing pad mode. Click the writing pad button  and the writing pad will appear. Open any word processor, for example Microsoft Word or WordPad, and write a word on the writing tablet. You can see the stroke shown on the writing pad. Select the word you want in the candidate words area with your mouse and the word will display on the word processor immediately.

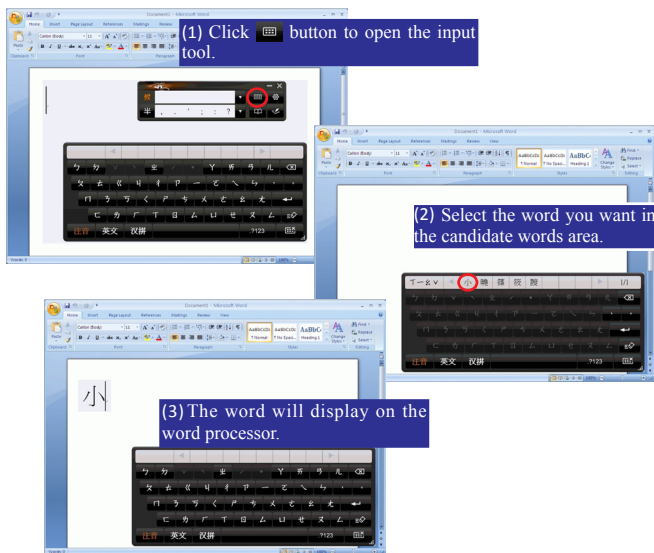


Tip: For more information, please refer to Chapter 6.



3.3 Input Tool

Besides the handwriting function, Wireless Pen also provides input tools to help users to input words, which includes Zhu yin, English, and Hanyu Pinyin keyboards. Open any word processor, for example Microsoft Word or WordPad, and click the  button to open the input tool. Select a phonetic keyboard and click the phonetic button one by one in order. The recognized words will be listed in the candidate words area. Select the word you want.




3.4 Settings

Click the function menu button  and select **[Settings]** which includes **[General setting]**, **[Chinese output setting]**, **[Recognition setting]**, **[Writing setting]**, **[Tablet setting]**, and **[Update setting]**.


Tip: For more information, please refer to Chapter 7.

3.5 Learning String

Click the function menu button  and select **[Learning String]**. Wireless Pen provides the function of using a simple symbol to represent a string of characters to speed up inputting speed.


Tip: For more information, please refer to Chapter 8

3.6 Custom Phrase

Click the function menu button  and select **[Custom Phrase]**. There are thousands upon thousands default phrases that you can use in the Penpower handwriting recognition. It also allows you to customize the phrase database to meet your needs.

Tip: For more information, please refer to Chapter 9.


3.7 AI

Click the function menu button  and select **[AI]**. Artificial Intelligence helps you to correct incorrect recognition character. It also learns your handwriting style to improve the recognition rate.

Tip: For more information, please refer to Chapter 10.




3.8 On-Line Translator

Click the function menu button  and select **[Open On-Line Translator]**. When reading English or Chinese articles, if you encounter unknown characters or phrases, move the cursor over the characters, and a translation window pops up to explain them for you.


Tip: For more information, please refer to Chapter 11.

3.9 Recitation

Click the function menu button  and select **[Recitation]**. Wireless Pen utilizes a state of the art text-to-speech technology, it reads influent Mandarin or Cantonese of any articles. You can use it as a tool for fast proofreading or in teaching the correct Mandarin/Cantonese pronunciation.

Tip: For more information, please refer to Chapter 12.

3.10 Signature

Click the function menu button  and select **[Signature]**. Wireless Pen provides Signature function for you to sign on the MS Word, Outlook, Outlook Express, and other applications which can contain picture and text.

Tip: For more information, please refer to Chapter 13.

3.11 Data Management

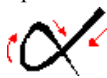
Click the function menu button  and select **[Data Management]** to import or export data.

Tip: For more information, please refer to Chapter 14.

3.12 Gesture

Wireless Pen support four standard inking gesture. You can handwriting these gestures to simulate keyboard input.

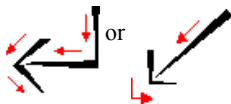
1. Delete : simulate DELETE key.



2. Backspace : simulate BACKSPACE key.



3. Enter : simulate ENTER key.



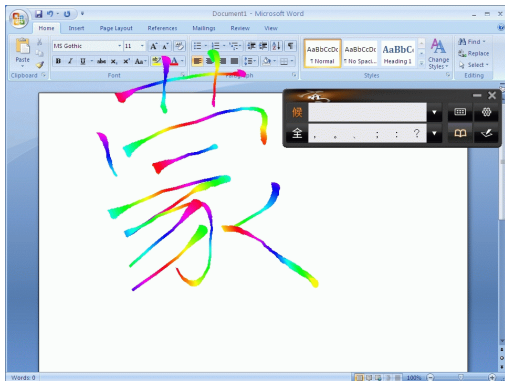
4. Space : simulate SPACE key.



Chapter 4 Full Screen Handwriting Mode

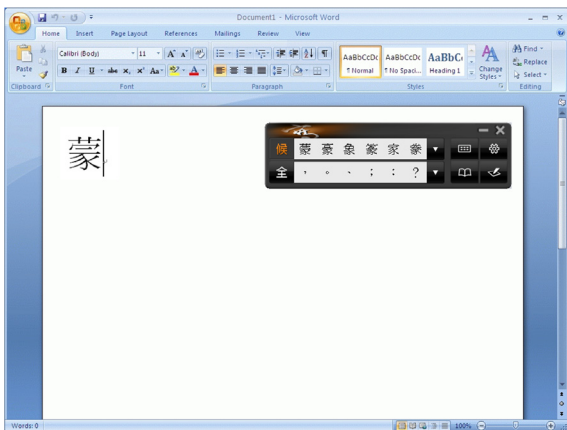
4.1 Getting Started to Write

The full screen handwriting mode is the default writing mode in Wireless Pen software. Open any word processor, for example Microsoft Word or WordPad, and write a word on the writing tablet. You can see the stroke shown on the screen.



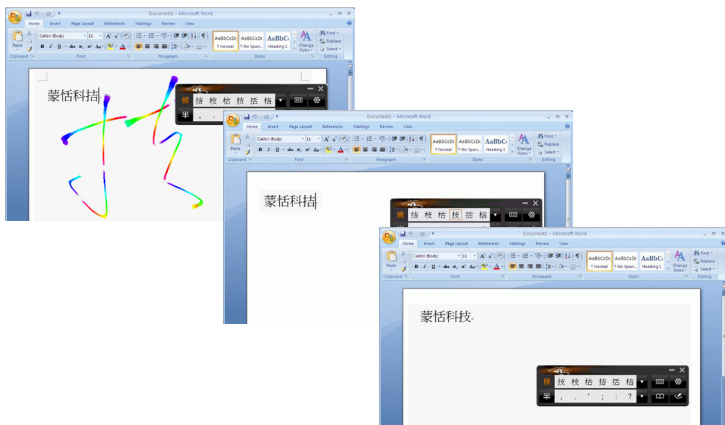


The recognized words will be listed in the candidate words area. Select the word you want with your mouse and the word will display in the word processor immediately. Wireless Pen can recognize various characters including Traditional Chinese, Simplified Chinese, English, Japanese(Hiragana/ Katakana), numbers, and symbols.



4.2 Candidate Words

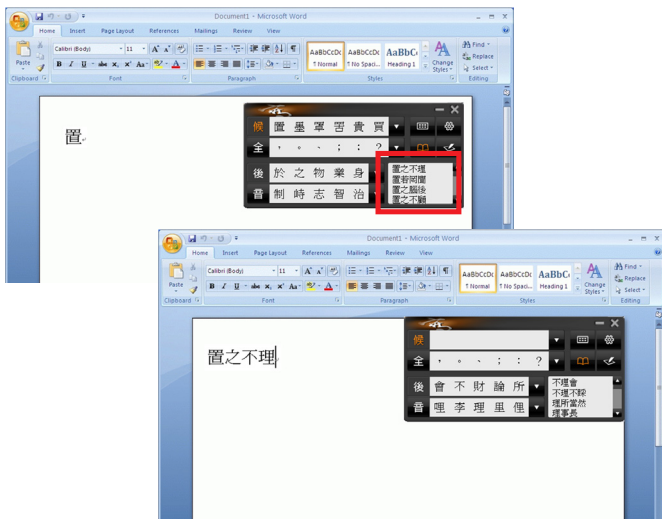
When you write a word on the tablet, the possible words that Wireless Pen recognized will be listed in the candidate words area. You can select the word you want among the candidate words to replace the original word which displays in the word processor. For example, you write the word [技], but the word shown in the word processor is [拮]. Then you can select the right word [技] in the candidate words area to replace the wrong word [拮].



Tips: When writing, candidate words based on the previous input will be displayed on the handwriting toolbar. Each press of the left function button on the touch tablet will move the candidate words forward by one and correct the results. Please refer to section 7.5 to set different functions of the buttons on the touch tablet.

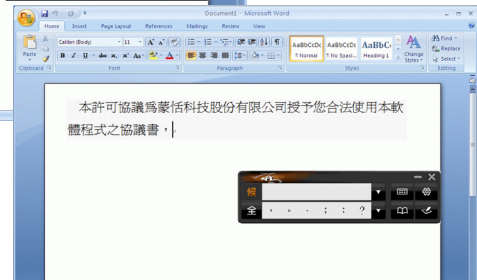
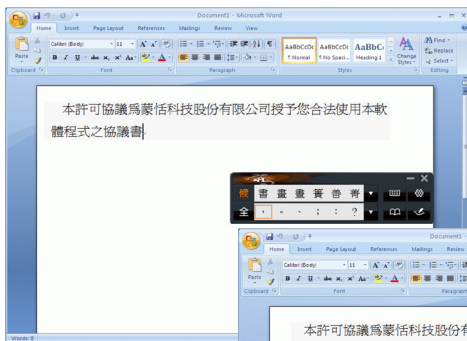
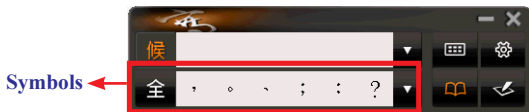
4.3 Related Phrase


After writing a character, the related phrases will appear in [Related Phrase] window. Select the phrase you want to input. It can short your time to input words. For example, you want to input [置之不理]. You only need to write the first word [置], and you will find [置之不理] in the related phrase window. Then you can select it to input.



4.4 Symbols

While you are writing, you can input symbols quickly by select the symbols in the [Symbols] area.



Tips: You can click  for more symbols to select. The default function of the right button on the tablet allows to input six habitual symbols. Please refer to section 7.5 to set different functions of the buttons on the touch tablet.



4.5 How to Write in Free Writing Mode

In Free writing mode, it's better to keep strokes of the same word closed, and keep not to overlap between words when you write. You need to finish writing every strokes of one word.

Right example

Write three words of 『明日月』.



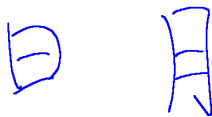
Wrong example 1

Overlap between two words. All the strokes may be recognized as one word.



Wrong example 2

The two parts of one word are written far away from each other. All the strokes may be segmented into two words.

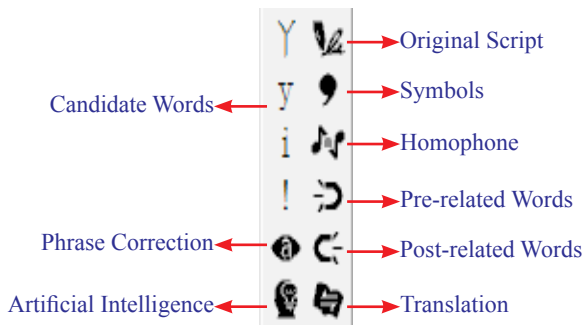


Auto Phrase Correction

The system automatically proofreads on your writing content to improve the recognition rate. For example, when you continuously write 『天下太平』 (peace on the earth) four characters, but the character 『天』 is incorrectly written as 『夫』, so they become 『夫下太平』. Penpower uses its internal phrase dictionary to correctly recognize your intended result 『天下太平』.

4.6 Bubble Interface

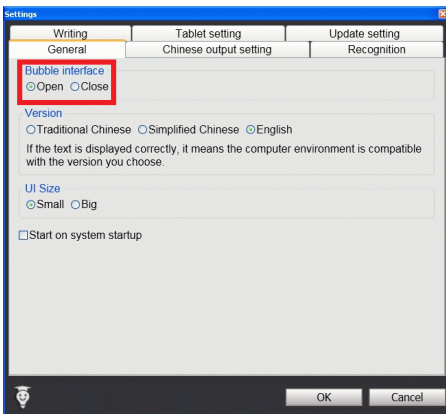
This bubble interface let you edit recognition result freely in any application. When you want to correct some word, just move the cursor position on this word for a while. The function tool bar will be popped up near the cursor.





4.6.1 Open and Close Bubble Interface

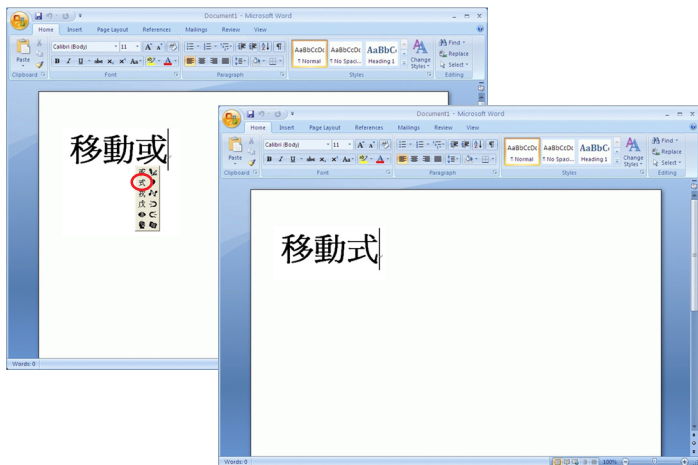
1. Click the function button  and select [Settings].
2. Select the [General] tag.



3. You can see [Open] and [Close] options under Bubble Interface in [General] tag. Check the [Open] or [Close] option to open or close the bubble interface.

4.6.2 Candidate Words

Wireless Pen provides 4 candidate words in bubble interface. Move the cursor position on a word for a while. The function tool bar will be popped up near the cursor. You can select a candidate word to correct the incorrect recognition.

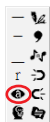





4.6.3 Phrase Correction


1. When entering an idiom in Full Screen mode such as 『一苗助長』, and you are not sure of how to write the character 『揠』, you can enter the character 『一』 instead to input 『一苗助長』.

一苗助長



2. Move the mouse over the character 『一』 and pause for a moment to bring up the “Candidate Characters Window”. Click the phrase correction button  and the 『一』 character will be changed to 『揠』.

揠苗助長

3. If the phrase correction function came up with multiple candidate words, these will be shown in the candidate words window for you to choose from. For example, if the input was 『股份有限公司』 when you pause the mouse cursor over the 『一』 character, this will bring up the “Candidate Characters Window”. Pressing the phrase correction button  will bring up a list of all phrase correction candidate words for you to choose and make the correction with.

股份有限公司



4.6.4 Artificial Intelligence

When you use candidate word or AI button to correct result, the system will modify its recognition database to adapt your personal writing style. The may improve the recognition rate.

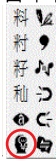
1. Handwrite some words. The result would be sent in the caret.

2. e.g. 『恬』 is wrongly recognized as 『恰』.


蒙恰科技

3. Move the cursor on the word 『恰』 for a while to pop up the function tool bar.

蒙恰科技



4. Click the candidate word if the correct word is there.

5. Otherwise click the AI button  to open the AI correction dialog.

6. Input the correct word 『恬』, and then click **[Input Complete]**.




7. You will see the wrong result 『恰』 is already updated as 『恬』. Your personal writing style of inking has also been learned.

蒙恬科技



4.6.5 Original Script

1. Write a few characters. E.g. 『 握苗助長 』 in full screen mode.
2. Move the mouse over the character 『 苗 』 for a couple of seconds for the Flotation Menu to show up.
3. Move the mouse over the **Original Script** button  to look up your own writing script.

握苗助長




4.6.6 Symbols

1. Write a few characters.
2. Move the mouse over the character you want to add a symbol for a couple of seconds for the Flotation Menu to show up.
3. Move the mouse over the Symbol button to open the symbol menu and select and input ordinary punctuation in full or half width.






4.6.7 Homophone

If you forget how to write some words, or they are too complicated to write, you can write down some other easy homophone to get the word that you would like to input. e.g. If you want to input the word 『豫』:

1. Write any one homophone of 『豫』, e.g. 『玉』. The result would be sent in the caret.
2. Move the cursor on the first word 『玉』 for a while to pop up the function tool bar.
3. Click  button to open the window of homophone words.



4. You can Click  /  /  button to toggle other Zhu yin homophone/ Cantonese homophone/Hanyu homophone.
5. Click 『豫』 to replace 『玉』.



4.6.8 Related word


For any two contiguous words, the first one is the pre-related word of the second one. The second one is the post-related word of the first one.

e.g. 『科技』, 『科』 is the pre-related word of 『技』, and 『技』 is the post-related word of 『科』.

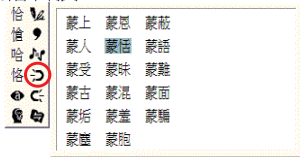
1. Handwrite some words. The result would be sent in the caret e.g. 『恬』 is wrongly recognized as 『恰』, and 『科』 is wrongly recognized as 『料』.

2. Move the cursor on the word 『恰』 for a while to pop up the function tool bar.

蒙恰料技


3. Click  button to open the window of pre-related phrases. If the correct phrase 『蒙恬』 is in the list, click it to update the result.

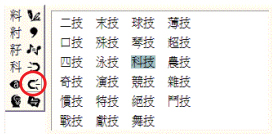
蒙恰料技



4. Move the cursor on the word 『料』 for a while to pop up the function tool bar.

蒙恬料技

5. Click  button to open the window of post-related phrases. If the correct phrase 『科技』 is in the list, click it to update the result.




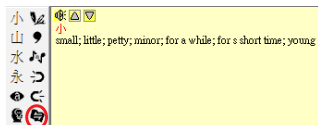
6. You will see the wrong result 『蒙恰料技』 is already updated as 『蒙恬料技』 at last.

蒙恬料技


4.6.9 Translation

Translate the words or phrases. E.g. write a word 『小』, and want to know the translation of 『小』.

1. Write 『小』.
2. Move the mouse over the character 『小』, and wait for the **Flotation Menu** to pop up.
3. Move the mouse over the **Translation**  button, the translation will show up.



Chapter 5 Writing Pad











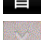

Besides the full screen writing mode, you can also select writing pad mode. Click the writing pad button  and the writing pad will appear. Open any word processor, for example Microsoft Word or WordPad, and write a word on the writing tablet. You can see the stroke shown on the writing pad. Select the word you want in the candidate words area with your mouse and the word will display on the word processor immediately.

Wireless Pen can recognize various characters including Traditional Chinese, Simplified Chinese, English, Japanese(Hiragana/ Katakana), numbers, and symbols.



Tip: Click  to switch to full screen handwriting mode or writing pad mode.



| | |
|---|---|
|  | : Candidate words |
|  \  | : Full-width\ half-width |
|  | : Input tool |
|  | : Function menu |
|  \  | : Display\ hide post-related words, homophone, and related phrase |
|  | : Open\ hide writing pad |
|  | : Post-related words |
|  | : Homophone |
|  | : Virtual button. Clear the handwriting on the writing pad. |
|  | : Virtual button. Send the handwriting to the word processor. |


Tips: You can tap the left/ right top corner of the writing pad with the pan to use Clear and Finish functions.

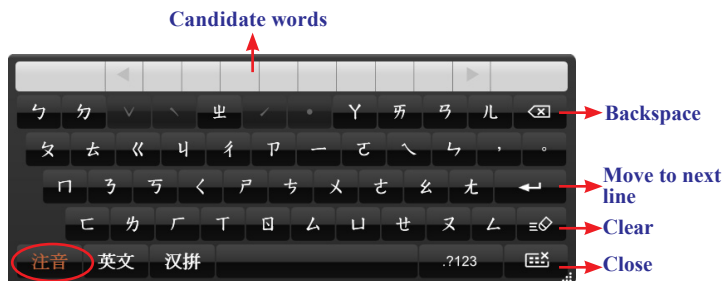
Other functions in the writing pad mode are the same with the functions in the full screen mode, such as candidate words, related phrase, and etc.. Please refer to the Chapter 4 for more information.

Chapter 6 Input Tool

Besides handwriting function, Wireless Pen provides other input tools, including Zhu yin, English, Hanyu Pinyin, and Symbol keyboards.

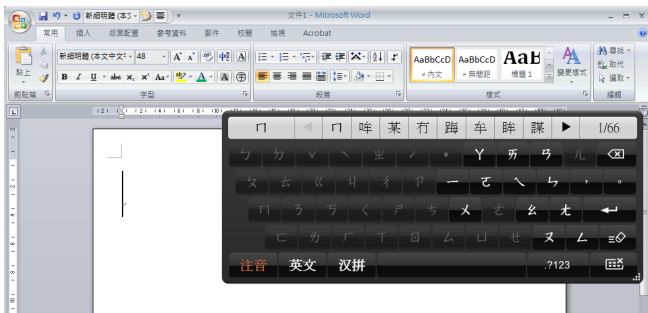
6.1 Zhu yin Keyboard

1. Click **Input tool** button  to open input tool.
2. Select Zhu yin "注音" on the keyboard.

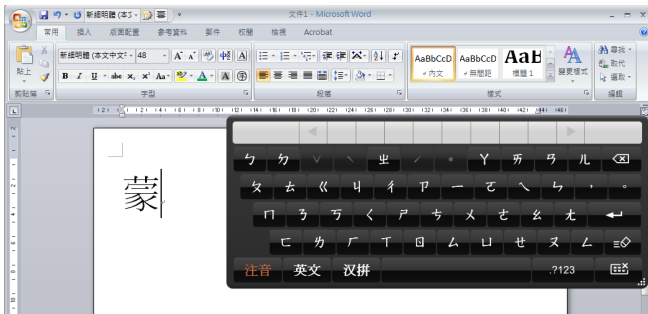





3. When you begin to spell a word in Zhu yin, the keyboard will ignore the alphabet you don't need automatically and help you to write the word quickly.



4. The candidate words will show up in the top of the keyboard. Select the word you need and the word will display at the cursor location. If the word you want did not show up among the candidates, you can click ► to see more candidates.



6.2 English Keyboard

1. Click **Input tool** button  to open input tool.
2. Select English "英文" on the keyboard.
3. Input words.

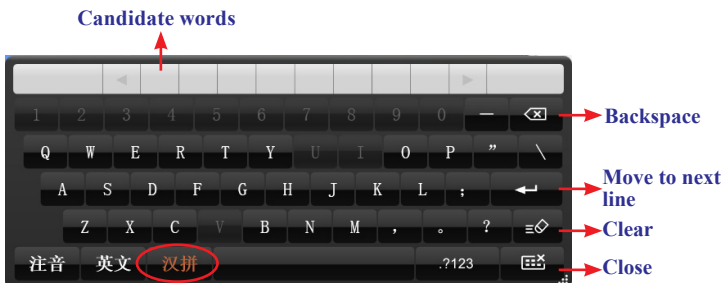


Tips: Click  to change to capital letter and click  again to return to small letter.





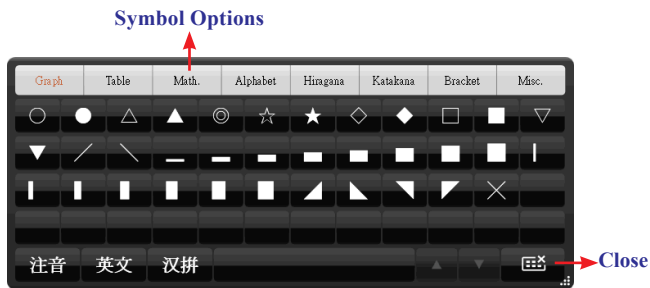
6.3 Hanyu Pinyin Keyboard

1. Click **Input tool** button  to open input tool.
2. Select Hanyu Pinyin "汉拼" on the keyboard.
3. Input words.



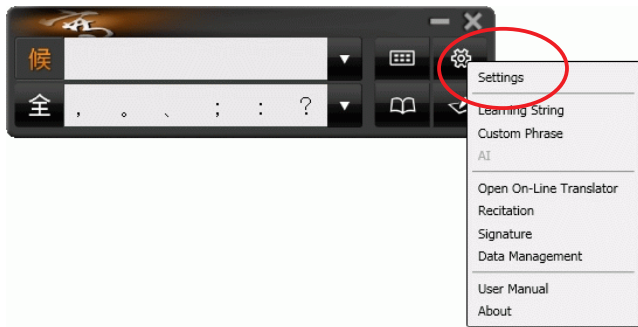
6.4 Symbol Keyboard

1. Click **Input tool** button  to open input tool.
2. Select Symbol  on the keyboard.
3. You can select various types of symbols from the top of the keyboard which includes **Graph**, **Table**, **Math.**, **Alphabet**, **Hiragana**, **Katakana**, **Bracket**, and **Misc.**.

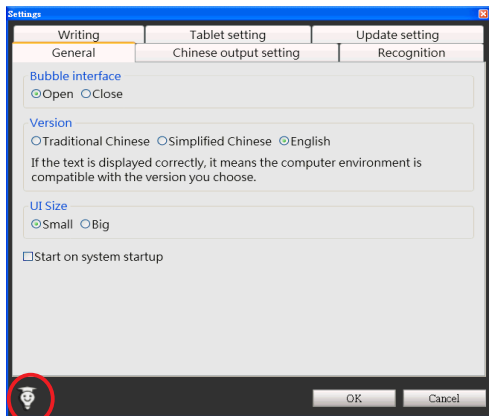


Chapter 7 Settings

Click the function menu button  to select [Settings].



7.1 General Setting

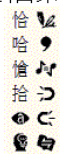





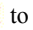




Tips: Click [Tips] at the left-bottom corner, and you can see the discriptions of the function when you move the cursor on it.

Bubble Interface

This unique user interface let you edit recognition result freely in any application. Check **[Open]** to turn on this function. The visual user interface is hidden transparently. When you want to correct some word, just move the cursor position on this word for a while. The function tool bar will be popped up near the cursor.

蒙恬氣泡式介面

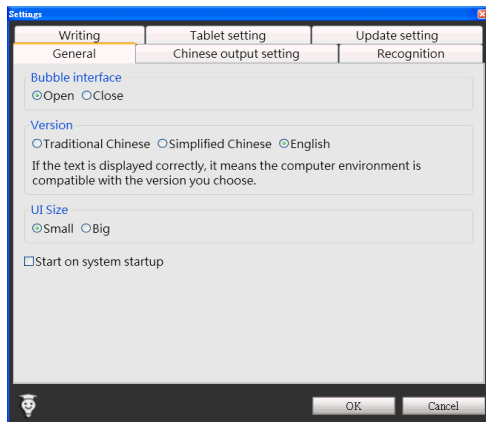


In the function tool bar of Bubble Interface, you can click candidate words, AI button , homophone , pre-related word , post-related word  or phrase correction  to correct the result. Click  button to see the original script. Click  button to input punctuation symbol, and the  button is for the Chinese-English translation function. Details are described in section 4.6.

Tip : You do not need to press any button after the cursor is moved on the word.

Version

You can select the display language in the user interface, including **Traditional Chinese**, **Simplified Chinese**, and **English**.



UI Size

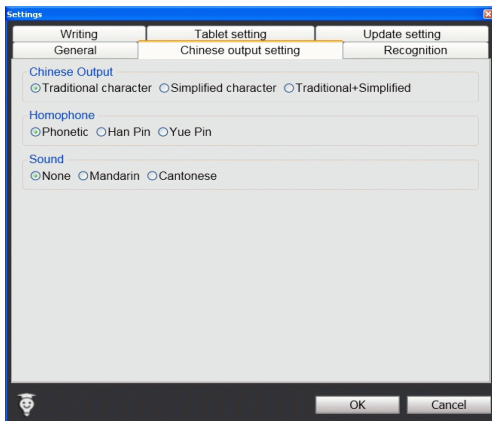
You can select **[Small]** or **[Big]** to change the UI size according to your preference.

Start on system startup

If you check the **[Start on system startup]** option, Wireless Pen will run automatically every time the operation system starts up.

7.2 Chinese Output Setting

Click **Chinese output setting** tag. You can choose the output characters, either in Traditional Chinese, Simplified Chinese or Traditional + Simplified, no matter how you write Chinese characters, the recognition follows its set.



Traditional Character

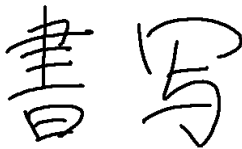
No matter whether you write traditional or simplified characters, the recognition result is displayed as traditional characters.

Simplified Character

No matter whether you write traditional or simplified characters, the recognition result is displayed as simplified characters.

Traditional + Simplified

When you write traditional characters, they show up as traditional characters. When you write simplified characters, they show up as simplified characters. Penpower allows you to use traditional or simplified writing method to input any Chinese character, or mixed them. For example, input 『書寫』.



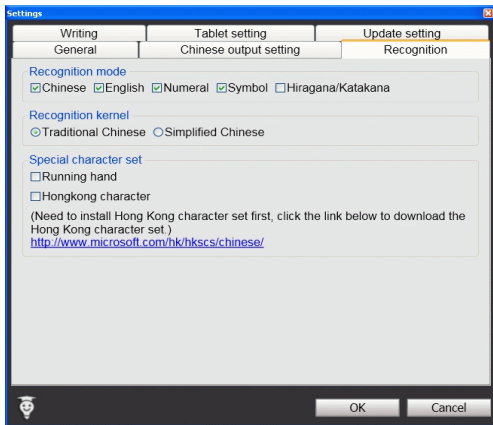
Homophone

Window Interface provides Homophone candidates, you can choose a pinyin method such as Phonetic, Han Pin or Yue Pin.

Sound

Pronounce the character in Mandarin or Cantonese immediately after recognition in Mandarin or Cantonese.

7.3 Recognition



Recognition Mode

Wireless Pen provides Chinese, English, Numeral, Symbol, and Hiragana/ Katakana Japanese recognition modes. Only select the recognition modes you want to improve the recognition rate.

Recognition Kernel

Select [**Traditional Chinese**] if you write in Traditional Chinese; select [**Simplified Chinese**] if you write in Simplified Chinese. It can help you to have higher recognition rate.



Running Hand

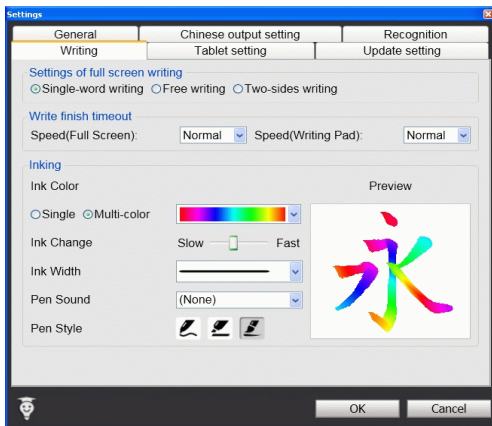
Check this option to recognize run-on cursive. When you do not need to recognize running hand characters, uncheck this function to have higher recognition rate.

Hongkong Character

This recognition mode is only available when the Wireless Pen is set to the Traditional Chinese or Traditional Chinese (Hongkong) version. You can connect to <http://www.microsoft.com/hk/hkscs/default.aspx> to check the Hongkong characters list.

Note: This recognition mode is only available when the wireless pen is set to the Traditional Chinese or Traditional Chinese (Hong Kong) version.

7.4 Writing Setting



There are three different options of full screen mode in the main menu.

Single-word writing

It is allowed to handwrite one word only at one time. You can not handwrite the next word until the recognition result of current word has been finished.

Two-sides writing

After the first stroke is written, one vertical line would be displayed on the center of screen. All the strokes written on the same side would be considered as part of one word. When a new stroke is crossed to the other side, it means that the last word is finished and the next word start to write.

Free writing

You can handwrite multiple characters before recognition at one time. Forty one characters at most is allowed. It permits left-to-right, or top-to-bottom free writing order. Remember to keep adequate distance between two contiguous words when you write. It affects the result of character segmentation.

Right example

Write three words of 『明日月』.



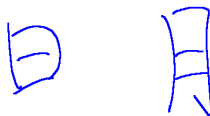
Wrong example 1

Overlap between two words. All the strokes may be recognized as one word.



Wrong example 2

The two parts of one word are written far away from each other. All the strokes may be segmented into two words.



Auto Phrase Correction

The system automatically proofreads on your writing content to improve the recognition rate. For example, when you continuously write 『天下太平』 (peace on the earth) four characters, but the character 『天』 is incorrectly written as 『夫』, so they become 『夫下太平』. Penpower uses its internal phrase dictionary to correctly recognize your intended result 『天下太平』.

Speed

There are several levels of writing speed you can set. After you stop writing, the less the relative value is, the shorter the timeout waiting for recognition is.

Ink Color

Change the color of inking. You can select **[Single]** or **[Multi-color]**.

Ink Change

Adjust the smoothness of color degree for the **[Multi-color]** option.

Ink Width

Change the thickness of inking.

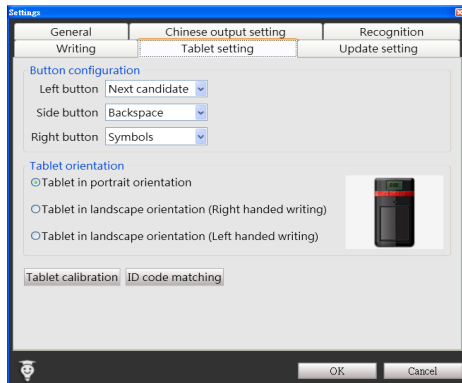
Ink Sound

Change the sound effect while writing.

Pen Style

There three kind of pen style to choose, including Felt-tip pen, Mark pen, and Writing brush.

7.5 Tablet Setting



Button Configuration

There are three main buttons on the touch tablet, Left button, Side button, and Right button and their default functions are Next candidate, Backspace, and Symbols. You can set these three buttons as other functions, such as Next candidate, Backspace, Symbols, Delete, Next line, Tab, Full/Half shape, Translation, and Input tool.

Tablet Orientation

You can select the orientation of the Wireless Pen as portrait orientation or landscape orientation. The landscape orientation provides right-handed and left-handed choices.

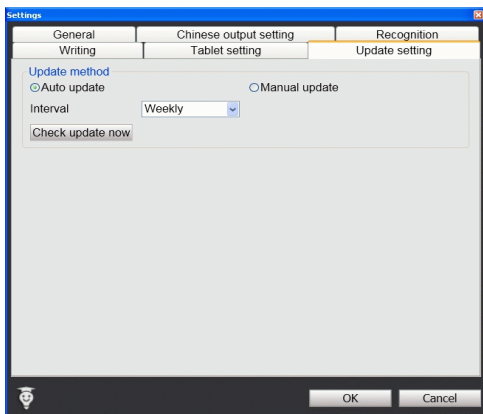
Tablet Calibration

Click [**Tablet calibration**] to open the calibration window to calibrate the tablet.

ID Code Matching

Click [**ID code matching**] to open the ID code matching window to run the process.

7.6 Update Setting



Auto Update

You are recommended to set the update method as **[Auto Update]** to let the system automatically check for and download updates. You can determine the check interval as daily, weekly, biweekly, or monthly.

Manual Update

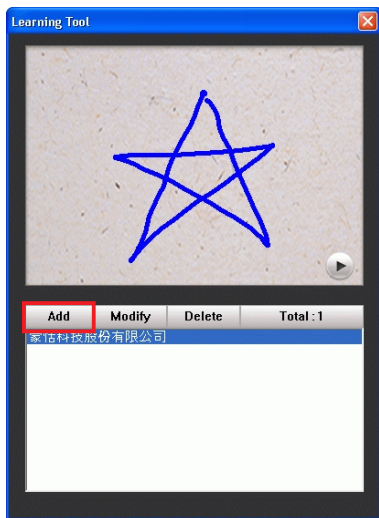
You can also set the update method as **[Manual Update]**. Please Go to the main menu and select **[Check update now]** and the system will then check for updates for you. If your version is the newest, the message box will display as below.



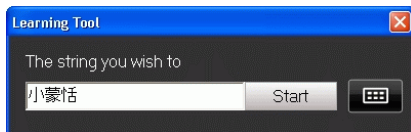
Chapter 8 Learning String

Wireless Pen provides the function of using a simple symbol to represent a string of characters to speed up inputting speed.

1. Click the function menu button  and select **[Learning String]**.
2. Click **[Add]**.

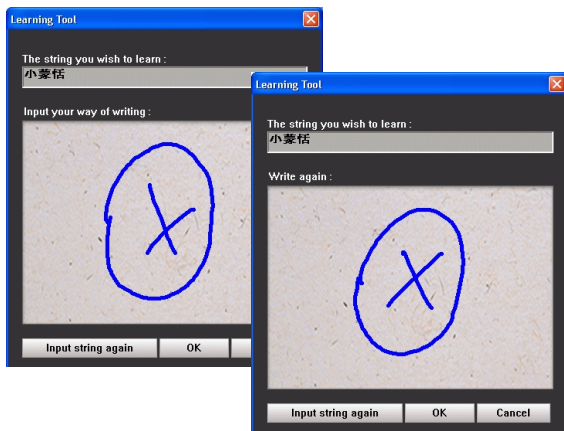


3. Input a string of characters. Then click **Start** button.



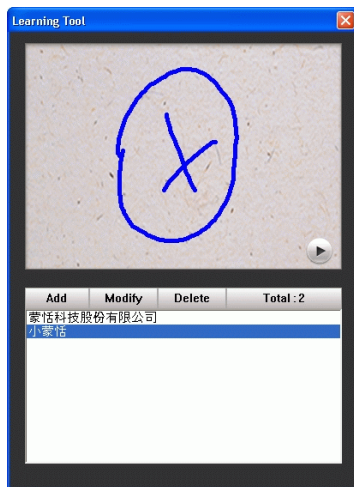
Tip: Click  to open the input tool.

4. Draw a symbol and click OK. Then the system will ask you to draw it again. Click OK again to finish learning.



Note: If the symbols you draw have too big differences, the learning will be failed. Please redraw the symbol.

5. You can see the learned results as below.

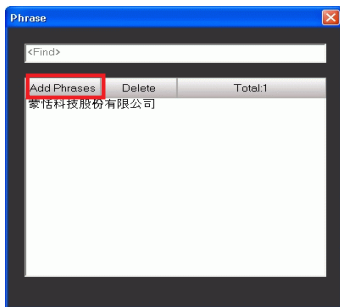


Chapter 9 Custom Phrase

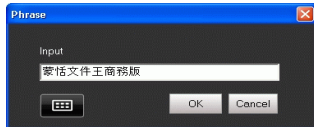
There are thousands upon thousands default phrases that you can use in the Wireless Pen. It also allows you to customize the phrase database to meet your needs.

9.1 Add Phrase

1. Click the function menu button  and select [Custom Phrase] to open the phrase dialogue.
2. Click [Add Phrases] to input a new phrase.




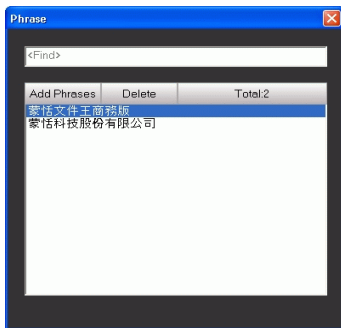
3. Input a new phrase. E.g. 『蒙恬文件王商務版』.



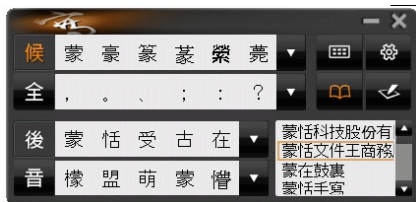
Note: The maximum length of one phrase is 200 words.

Tip: Click  to open the input tool.

4. Click **Ok** button to add the new phrase and click  to exit.

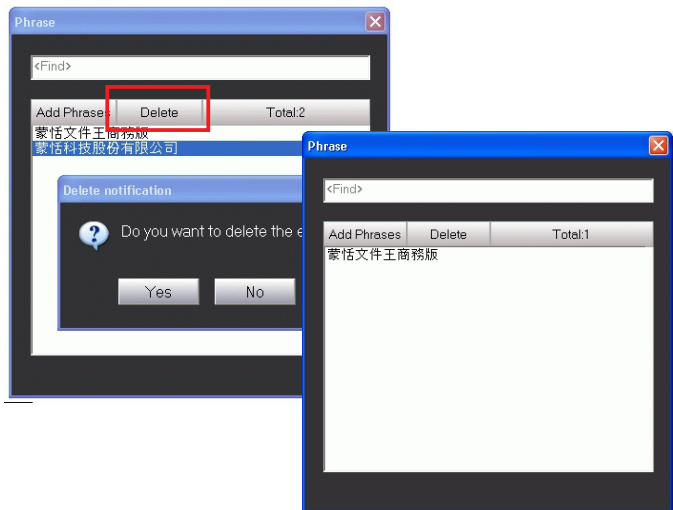


5. When you want to input 『蒙恬文件王商務版』 next time, you can write 『蒙』, and 『蒙恬文件王商務版』 phrase will be displayed in related phrase area. You may select it to input directly.




9.2 Delete Phrase

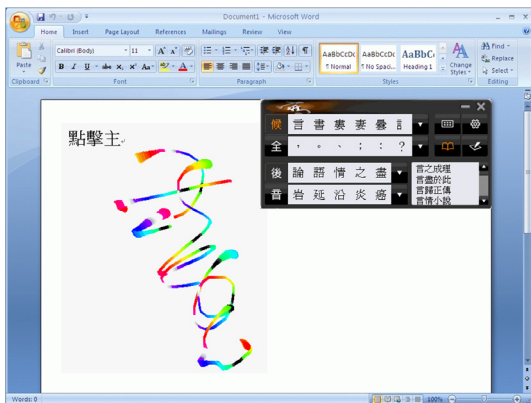
If you want to delete a phrase in the phrase database, you can select the phrase and click **[Delete]**.



Chapter 10 Artificial Intelligence

Artificial Intelligence helps you to correct incorrect recognition character. It also learns your handwriting style to improve the recognition rate.

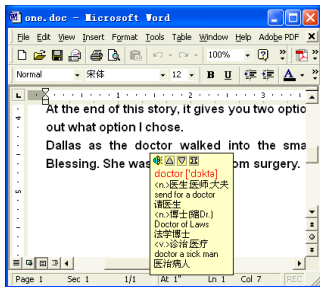
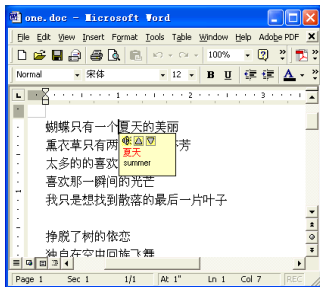
1. If Wireless Pen recognized the wrong word, and the correct word did not show in the candidates, you can click the function menu button  and select [AI] to open artificial intelligence dialogue. For example, you want to input the word 『畫』, but you did not find 『畫』 in the candidate words.

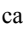




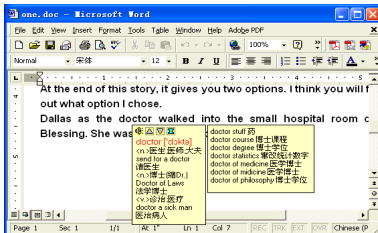
Chapter 11 On-Line Translator


If you encounter unknown characters or phrases when reading English or Chinese articles, move the cursor over the characters, and a translation window pops up to explain them for you.

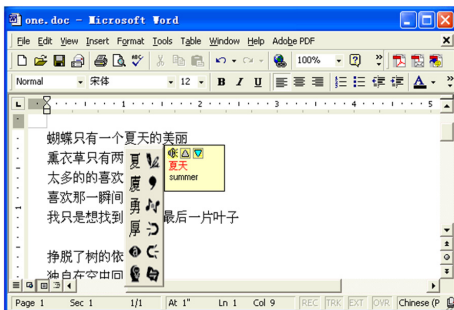
1. Click the function menu button  and select **[Open On-Line Translator]** to turn on the translation function.



When you move the cursor outside the interactive scope, the window will disappear. In the window, you can press the play  button to listen to the pronunciation or press the character button  to see the translations of related words or press  button to see phrase explanation.







The online translation is also used in the balloon interface as the candidate window. The online translation window and the candidate window will not pop up at the same time. If only candidate window pops up, you can also select  button from the candidate window to see the translation results.



Chapter 12 Recitation


Integrate the Text to Speech (TTS) technology to read aloud the Chinese article content within any window.


12.1 Penpower Voice Reader

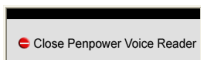
1. Click the function menu button  and select **[Recitation]** to open voice reader.
2. After voice reader is executed, the small icon  would be displayed on the right top corner of any application.
3. If you select one paragraph of text first, then click , and select “Start/Stop Text To Speech”. The selected text will be read aloud. You can choose Mandarin or Cantonese tone pronunciation from the menu.
4. If you click  without selection, then select “Start/Stop Text To Speech”. The text would be read aloud from caret location.




Note: *The Windows Vista 64bit edition does not support the direct text-to-speech function. You must select a section of text before you can use the text-to-speech function.*

5. You can click , and select “Start/Stop Text To Speech” again to stop reading.

6. Click  , select “Exit” to exit the Penpower Voice Reader.



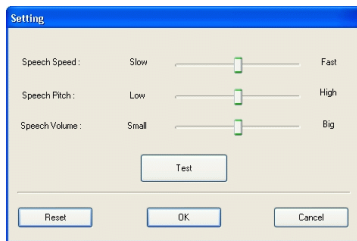
12.2 Reading Setting

1. Click  , select “Setting” to open the setting dialog.

Speech Speed : Adjust the speed of reading.


Speech Pitch : Adjust the tone of reading.

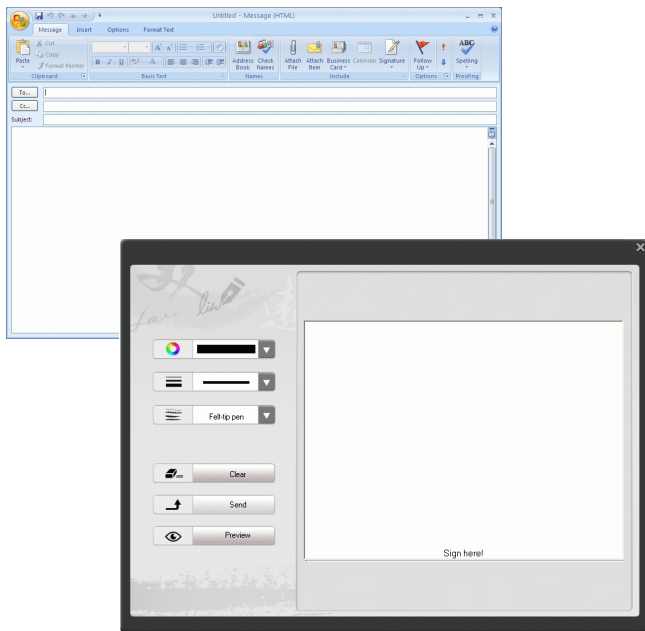
Speech Volume : Adjust the volume of reading.










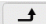
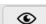
Chapter 13 Signature

Wireless Pen provides **Signature** function for you to sign on the MS Word, MS Excel and other applications which can contain picture and text.

1. Move the cursor to the place you want to sign in your document and click the function menu button  to select [Signature].





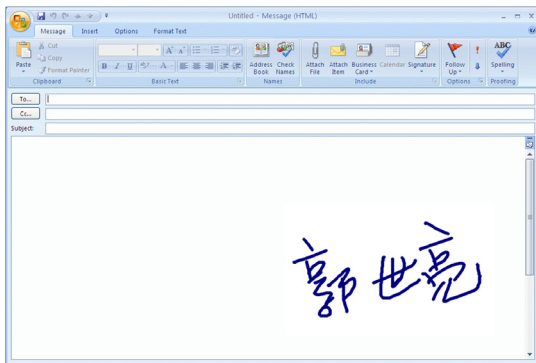


-   : Select the color of inking
-   : Select the thickness of inking.
-  Felt-tip pen  : Select pen style.
-  Clear : Clear the script and sign again.
-  Send : Send the signature out.
-  Preview : Preview the signature.


2. Sign your signature.



3. Click the **Preview** button  can view the signature in a preview window.
4. Click the **Send** button  to insert the signature next to the cursor.



Chapter 14 Data Management

Wireless Pen will memorize personal learning data and settings according to the different user accounts in Windows. Click function menu button  and select [**Data Management**] to export or import your personal data.



Chapter 15 Presenter Mode

The Wireless Pen supports MS PowerPoint presentation application to make your presentation more professional. You may switch the [Presenter/Handwriting mode] switch upward to the the [Presenter mode] and use the following functions to help your presentation. The monitor on Wireless Pen also displays the current mode information. [P] represents Presenter Mode and [H] represents Handwriting Mode.

Front Side



Right Side



1. Left button: Show the previous page.
2. Right button: Show the next page.
3. Laser point button: Press the laser point button to highlight the main points in your presentation with the red laser light.



4. Mouse area: When pull the stylus pen out, you can use this area as a mouse pad to move your cursor, click and double click the mouse area.

Note: If you do not need to use the mouse function during the presentation, please do not pull the stylus pen out to avoid activating the mouse in the dark.

5. Timer setting button: Let you set the presentation time. Press it once, add 5 minutes and so on. After 5 second of setting, the Wireless Pen will start to count down. The LCD monitor will display the remaining time, and alarm you at 2, 5 minutes left and time is up with the gentle red flash.

Tip: Press and hold the [Timer setting button] for a while, you can reset the timer.

6. Black screen button: During the presentation, press the black screen button to display the black screen. Press it again to display the previous screen.
7. Presenter/Handwriting mode switch: Switch upward to the the [Presenter mode]. Switch downward to the the [Handwriting mode].

Wireless Pen V8.0 User Manual

Penpower Technology LTD.,

Release: June, 2012

Edition: 1