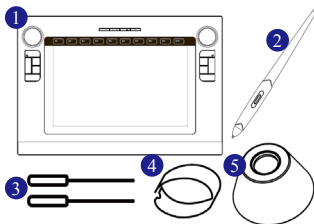


Package Content

1. Picasso Tablet
2. Pen
3. Pen Refill x 2
4. Tweezers
5. Pen Stand

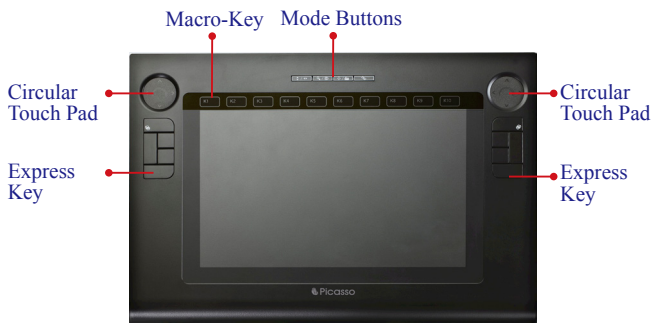


Specification

- Dimension: 390mm * 263 mm * 14mm
- Weight: 1078 g
- Active area: 10" * 6"
- Resolution:
 - Windows 7, Vista, or XP with tablet driver installed: 4000 LPI
 - Windows 7, Vista, or XP without tablet driver installed: 2000 LPI
- Report rate: 200 +/- 3 Reports/Second
- Pen pressure: 1024 levels
- Function Mode: Scroll, Zoom, Direction, Auxiliary (From left to right). Under these 4 keys, there is one LED for each button.

- Auxiliary Button:
 - In Scroll mode: up/down ⇐⇒ left/right
 - In Zoom mode: Zoom in/out ⇐⇒ Volume control
 - In Direction mode: four direction key ⇐⇒ page up, page down, Home, End
- Macro-Key: 10
- Power source: USB, 5V +/- 5%, 160mA
- LED: 4 mode LED (4 Blue LED under the button cap)
- Sensitivity Height: 12 mm (12 +/- 2 mm)

Hardware Introduction

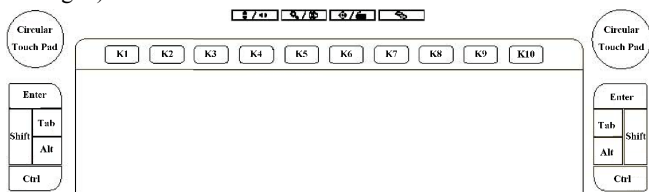


The Picasso Tablet is a multi-functional USB HID digitizer. It integrates the digitizer, ten key switches, four mode buttons and two circular touch pads into a device.

The circular touch pad provides the following functions: the mouse's scroll function, volume control function, zoom-in/out function, keyboard four directions key function, and keyboard Page up/down/Home/End key function.








Macro-Key


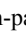

There are ten software-shot-cuts named "Macro Keys" on the upper area. You can easily modify or change its setting by using the "MacroKey Manager" software. For example, you can set one of the Macro Keys as the shortcut to open your favorite program or as a hyperlink to specific website. (See the help of MacroKey Manager.)









Touch-Pad and Mode Buttons

There are 4 button-switches at the upper area:

 /  Scroll,
  /  Multimedia,
  /  Direction, and
  Auxiliary. Each button glows blue when you press it.

1. When you plug the tablet into USB port, its default function for Touch-pad is  / , "Vertical-Scroll". And when  Auxiliary button is pressed, the circular touch pad changes to "Horizontal-Scroll" function.

2. When  /  Multimedia button is pressed, the touch pad becomes a zoom-in/out function. And when the  Auxiliary button is also pressed, touch-pad becomes a volume-control function.
3. When  /  Direction button is pushed, touch-pad become as a four direction keys. And when  Auxiliary key is also pushed, circular touch-pad becomes a Page up/Page down/Home/End function.

Express Keys

The default function of each Express key is as the indicator on the diagram of previous page. You can reset the customizable the Hot keys to perform frequently used functions except Eraser buttons.

Installation and Setting - Windows

Before Installing Your Tablet

1. You should completely uninstall any other tablet's driver.
2. Always install the driver first before plugging your Tablet into the USB.

Installation

Step 1: Insert the driver disk into your compute's CD-ROM drive. The software installer menu will show up automatically.


Step 2: Follow the instructions to install the Picasso tablet and Macro Key Manager.

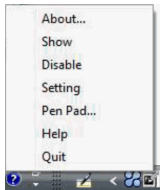
Step 1: Connect your tablet to the PC's USB port.

Note:

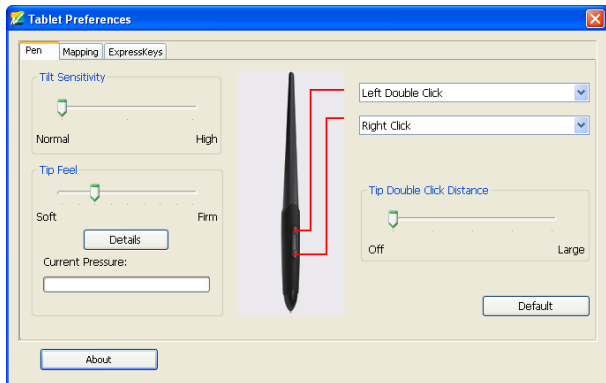
1. *The Picasso tablet driver disk is integrated with Macro Key Manager.*
2. *If you use Windows 7 or Vista, Picasso tablet can be used by plug-and-play without installing any special driver and work well with Microsoft applications such as PowerPoint, Excel, Word, Windows Journal, OneNote and Paint. If you want to use specific functions such as Macrokeys, Circular Touch Pads and Express Keys, please install MacroKey Manager.*

Setting

After installation, you can change the settings of MacroKey Manager by right clicking the  icon on the bottom of Window Tool Bar. Then MacroKey Manager menu will appear.



◎ Tablet Preferecnes Setting: Pen



Tilt Sensitivity: You can customize how far you may tilt the pen so that it will still be recognized by the tablet. We suggest you move the slider to “High”.

Tilt Feel: This is where you may customize how sensitive you would like for your tip to be. We suggest you move the slider to “Soft.”

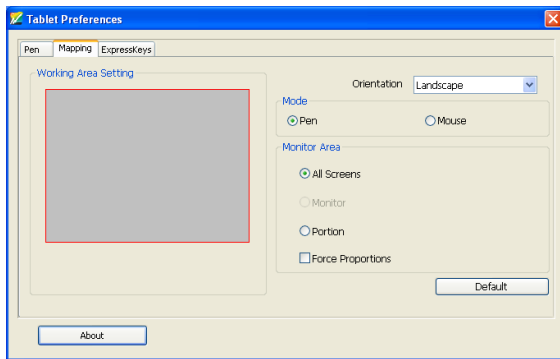
Current Pressure: You can see the current pen pressure at this bar when you press the pen against the Picasso tablet.

Pen Buttons setting: You can change the function of each button on the pen.

Tip Double Click Distance: This slider determines how long the distance between double clicks is. We suggest to keep it at the default setting.

Default Button: This button is to reset all sliders and settings to the “Default” setting.

© Tablet Preferecnes Setting: Mapping

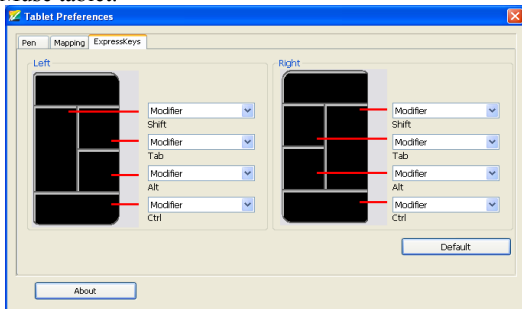


This feature allows you to ‘map’ your tablet to your monitor(s). You may allow the tablet to fit the size of you monitor by clicking “Full Area” or to a particular monitor, and you may also map it to a portion of your monitor.

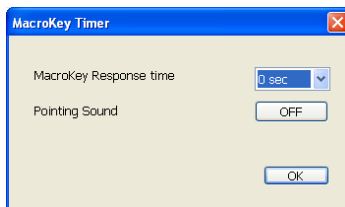
There are 2 modes that are available for your Muse: Pen Mode or Mouse Mode. Pen Mode is recommended for drawing applications, and Mouse Mode is good for navigating on your computer.

© Tablet Preferecnecns Setting: Express Keys

This menu is to configure the 10 “ExpressKeys” on both sides of the Muse tablet.

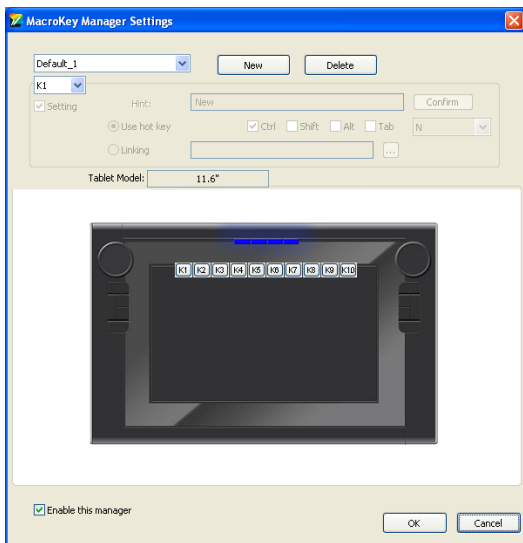


© MacroKey Response Time setting:



You can set timer for how long MacroKey function will work. There are 5 different choices; 0, 0.5, 1, 2 and 3 seconds. The timing you choose will determine how long you must hold pen on MacroKey before it activates. You can choose to get the pointing sound or not while the pen tip is pointing on the Tablet.

© MacroKey Manager Setting



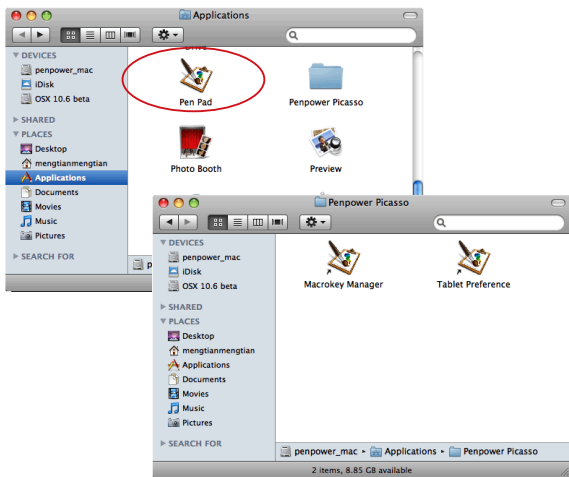
In Macrokey manage, you can easily modify or change its setting as the shortcut keys to, for example, specific websites.

Installation and Setting - Mac

Step 1: Insert the driver disk into your compute's CD-ROM drive.

Step 2: Click the **Pen Pad Tablet Driver** icon and follow the installation steps to install Picasso Tablet driver.

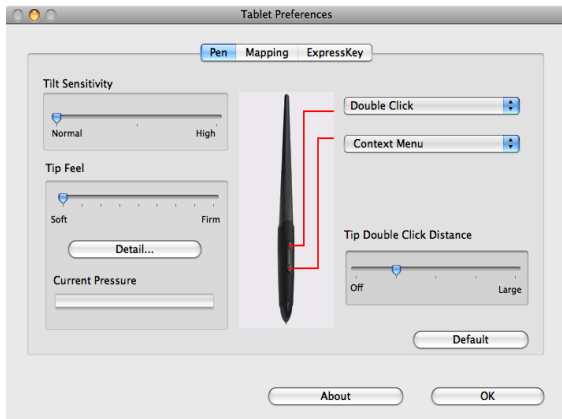
Step 3: Click **Tablet Preference** or **MacroKey Manager** icon to modify their settings.



Setting

Open Tablet Preferences or Setting window or Macrokey Setting window from Applications\Penpower Picasso\...

© Tablet Preferecnes Setting: Pen



Tilt Sensitivity: You can customize how far you may tilt the pen so that it will still be recognized by the tablet. We suggest you move the slider to “High”.

Tip Feel: This is where you may customize how sensitive you would like for your tip to be. We suggest you move the slider to “Soft.”

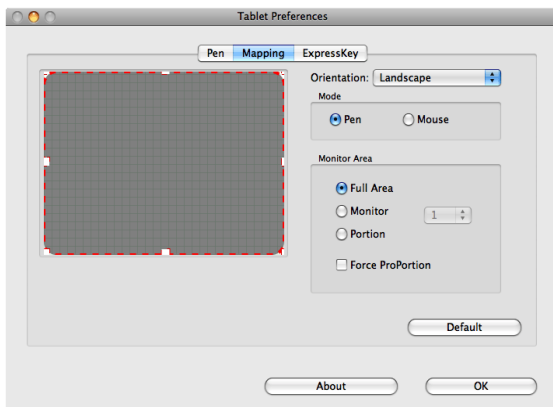
Current Pressure: You can see the current pen pressure at this bar when you press the pen against the Picasso tablet.

Pen Buttons setting: You can change the function of each button on the pen.

Tip Double Click Distance: This slider determines how long the distance between double clicks is. We suggest to keep it at the default setting.

Default Button: This button is to reset all sliders and settings to the “Default” setting.

© Tablet Preferecnes Setting: Mapping

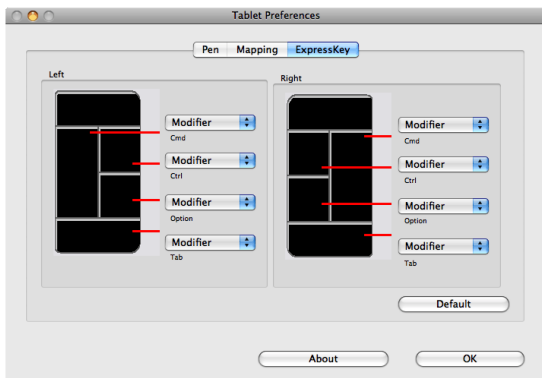


This feature allows you to ‘map’ your tablet to your monitor(s). You may allow the tablet to fit the size of you monitor by clicking “Full Area” , or to a particular monitor, and you may also map it to a portion of your monitor.

There are 2 modes that are available for your Muse: Pen Mode or Mouse Mode. Pen Mode is recommended for drawing applications, and Mouse Mode is good for navigating on your computer.

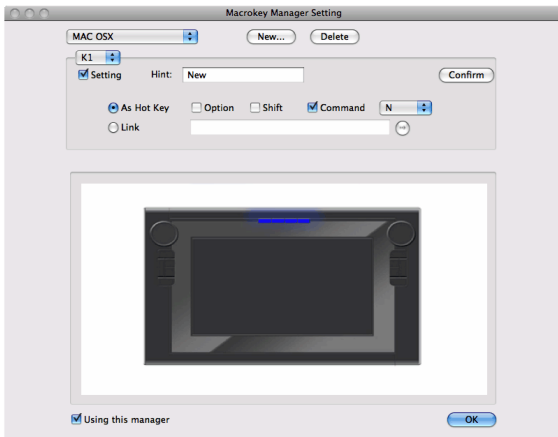
© Tablet Preferecnes Setting: Express Keys

This menu is to configure the 10 “ExpressKeys” on both sides of the Muse tablet.



© MacroKey Manager Setting

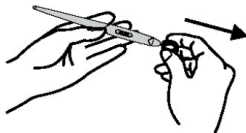
In Macrokey manage, you can easily modify or change its setting as the shortcut keys to, for example, specific websites.



How to Replace the Pen Refill

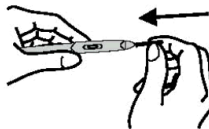
Step 1

Pull out the used pen nib with the Tweezers provided.



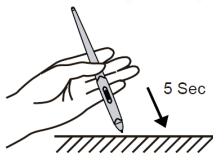
Step 2

Insert the Pen Refill to the pen.



Step 3

Press firmly on a hard surface for 5 seconds till the Pen Refill is locked.



Safety Information

Avoid:

- Dampening the product
- Using volatile chemicals to clean the product
- Dropping the product off the table or to the ground
- Strongly bumping the product into hard stuffs
- Stepping on the product
- Putting heavy stuffs on the product
- Disassembling the product