

mini ScanEYE

User Manual

Version: V3.0

Edition: Released in July, 2009

Penpower Technology Ltd.

Software User License Agreement

You are licensed to legally use this software program (“the Software”) by Penpower Technology Ltd (“Penpower”) under this license agreement (“The Agreement”). If you do not agree with any of the provisions in this Agreement, please do not install, copy or use the Software. By using the Software, you are deemed to fully understand and accept the provisions of this Agreement.

1. Intellectual Property

All intellectual property rights in the Software, together with all information and documents included in the packaging for the Software (including but not limited to copy-rights), are property of Penpower, and are protected by relevant laws and regulations.

2. License to Use

You are authorized to use the Software on one (1) single computer only. You may not use the Software on any other machines other than the said single computer.

3. Authority to Copy

The Software and all documents included with the Software, and copyright thereof, are property of Penpower. You are licensed to make one (1) copy of the Software for your personal backup purposes. All other acts of copying are strictly prohibited.

You may not sell, lease, disassemble, reverse engineer, copy, translate, adapt or derive the Software, or obtain the source code of the Software by any other means. You may not use the Software for any purposes other than those permitted under this Agreement.

4. Business Users

If you need to install or use the Software on more than one (1) computer, please contact Penpower or our local distributor to purchase a license for the additional use.

5. Liability

You agree to indemnify Penpower against all losses, costs, debts, settlement payments or other expenses (including but not limited to attorneys fees) arising from your breach of this Agreement, and you agree to compensate Penpower for all of the abovementioned damages.

6. No Warranty

Effectiveness of a packaged software in handling information is closely related to its software and hardware environment. The Software is published following careful development and product testing by Penpower, but Penpower is not able to conduct tests based on all possible combinations of software and hardware environment. Therefore, Penpower is unable to promise nor warrant that there will be absolutely no risk of loss or damage of information, or any other kind of loss, during installation and/or execution of the Software. You must be fully aware of your risks in using the Software.

Penpower will provide you with the Software and support services in respect of the Software to the maximum extent permitted by law. However, Penpower does not warrant that the Software and information included in the package of the Software contain no defects or errors. Penpower is not liable for any indirect, special or incidental loss arising from the Software, including but not limited to loss of profits, damage to business reputation, cessation of work, hardware malfunction or damage, or any other commercial damage or loss arising from commercial use of the Software.

7. Limitation of Liability and Damages

The maximum amount of compensation payable by Penpower, in respect of any damage incurred by you for any reason under this Agreement, is limited to the amount you have already paid to Penpower in respect of the Software.

Under no circumstances will Penpower be held liable for the possibility of loss, notwithstanding Penpower may be aware of the possibility of such loss.

8. Prohibition Against Sublicense

You are prohibited to assign the license in respect of the Software granted to you under this Agreement, or to grant a sublicense to another person.

9. Jurisdiction

With regards to any disputes arising from this Agreement, Penpower and you agree that the court having jurisdiction over the business location of Penpower will be the court in the first instance.

10. Miscellaneous

In the event that any provision of this Agreement is found to be invalid at law, such invalidity will not affect the validity of any other provisions, or the legal enforceability of such other provisions.

In the event that the Software cannot be executed under conditions of normal use, due to any damage to the original disk/s, Penpower will replace the disk/s free of charge.

Contents

Chapter 1 Product Features	1-1
1.1 Introduction	1-1
1.2 Features	1-1
Chapter 2 Installation	2-1
2.1 System Requirements	2-1
2.2 Hardware Specification	2-1
Function button:	2-1
2.3 Software Installation	2-2
2.4 Hardware Installation	2-5
Chapter 3 Character Input	3-1
3.1 Run Penpower mini ScanEYE	3-1
3.1.1 Toolbar	3-1
3.2 Scan to Computer	3-3
3.2.1 Scan & Recognize	3-3
3.2.2 Send Image	3-3
3.3 Settings and Scan Tips	3-4
3.3.1 Language Settings	3-4
3.3.2 Scan Direction	3-5
3.3.3 Speech	3-7
3.3.4 Scanning Horizontal or Vertically Aligned Text	3-8
3.3.5 Property Settings	3-8
3.3.6 Translation Website Set Up	3-9
3.3.7 Interface Language Settings	3-9
3.4 Using Balloon UI	3-10
3.4.1 Correct a Certain Character	3-10
3.4.2 Original Image	3-14
3.4.3 Punctuation	3-14
3.4.4 Translation	3-14
3.5 Displaying Original Image	3-15
3.6 Online Translation	3-16
Chapter 4 Penpower Voice Reader	4-1
4.1 Open Penpower Voice Reader	4-1
4.2 VoiceReader Setting	4-2

4.3 Turn off Penpower VoiceReader.....	4 - 2
Chapter 5 Penpower Translator	5 - 1
5.1 Open Penpower Translator	5 - 1
5.2 English Character Dictionary Lookup.....	5 - 1
5.3 Chinese Character Dictionary	5 - 3
5.4 English Phrasal Dictionary	5 - 4
5.5 Chinese Phrasal Dictionary	5 - 5
5.6 Translating Scanned Input	5 - 6

The software application may have a newer version at the time when this product was being manufactured and/or packaged. If the content on your application screen differs from your User Manual, please follow the latest application screen upon installation.

Chapter 1 Product Features

1.1 Introduction

Penpower mini ScanEYE, the best scan pen, scans and recognizes words or pictures into the software such as MS Word, Excel or PowerPoint etc. of your computer via the USB interface. With the high scan speed of 15 cm per second, every minute can scan up to 800 characters.

Whenever you come across any particular words or sentences that you do not understand, the auxiliary software, Transtar or translation website can translate for you.

The new version of mini ScanEYE includes French, German, Italian and Spanish recognition languages. It becomes a great tool for the international business and study.

1.2 Features

- **A brand new ergonomic design**

Provide a comfortable handle which fits all left and right-handed users. Scan away effortlessly with its transparent scan tip. Where you see, where you scan. The stand alone USB cable can prevent cable damage and connection problems.

- **The best input and translation device**

Unlike the complicated process of the traditional scanner, mini ScanEYE provides the easiest way for inputting words. The input speed is ten times faster than typing manually. It is the best input and translation tool for officer, businessman/businesswoman, professor, teacher, student, journalist, traveler and everyone.

- **Huge recognition boundary**

It can recognize 13060 Traditional Chinese characters, 6763 Simplified Chinese characters, 4184 Hong Kong characters, 3580 Japanese characters, English, Korean, French, German, Italian, Spanish, numbers and punctuation.

- **Multiple language recognition system**

The adjustable multiple language recognition system with the 99% recognition rate provides Traditional Chinese, Simplified Chinese, Hong Kong characters, English, Japanese, Korean, French, German, Italian and Spanish recognition languages.



. **Automatic Tilt Calibration**

Auto-detect and calibrate the tilt angle of the scanned pictures to improve the recognition accuracy.

. **Balloon Interface**

Balloon interface offers you a non-interference environment. All scan results will directly transfer to the desired application. Balloon interface pops up and provides online translator, pronunciation, candidate words and related words whenever you need.

. **Scanning and Recognizing Synchronously**

Multi-thread architecture allows you to scan continuously without pause while recognition is being done on the fly.

. **Scan Image**

The new feature of scanning images lets you scan and save the important images into MS Word files.

. **Bidirectional Chinese to English document translation**

Come with translation software, Transtar, which can translate phrases or characters from English to Chinese or vice versa and have your complete Chinese document translated into English right away, with a read back function which reads out your document to you aloud.

. **Online Translation**

The manageable online translation menu is attached on the toolbar. You can set up the translation website for translating instantly.

. **Penpower VoiceReader**

Penpower VoiceReader utilizes a state of the art text-to-speech technology, it reads in fluent Mandarin or Cantonese of any articles. You can use it as a tool for fast proofreading or in teaching the correct Mandarin/Cantonese pronunciation.

. **Penpower OCR**

Penpower OCR can recognize any complicated document or table images, which are took by any digital camera or flatbed scanner.

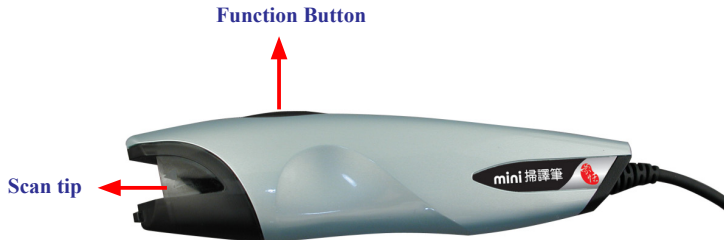
Chapter 2 Installation

2.1 System Requirements

- Pentium II 300 CPU or above
- 128MB of RAM
- 250MB of available hard disk space
- Windows 2000/XP/Vista 32 bit
- USB port

2.2 Hardware Specification

- Dimensions: 131mm x 31mm x 19mm
- Weight: 45g (excludes USB cable)
- Interface: USB 2.0
- Scanning speed: 15 cm/sec
- Character size: 5~22 pt



Function button:

When scanning words, the function button can be used as Enter function. It also works as checking next word in the Penpower Translator.



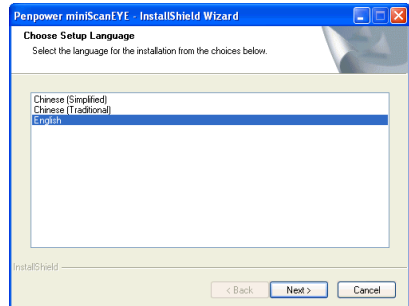
2.3 Software Installation

1. Insert the mini ScanEYE setup CD into your CD-Rom drive. System will run installation program automatically. Click **mini ScanEYE** on the Installation window to install mini ScanEYE.



Tip: mini ScanEYE provides TranStar dictionary and OCR optical character recognition software as free gifts. You can installation them from Installation window.

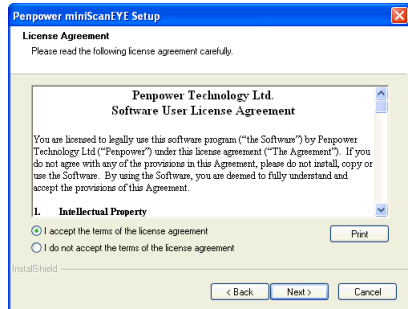
2. Select an installation language and click **OK** to install.



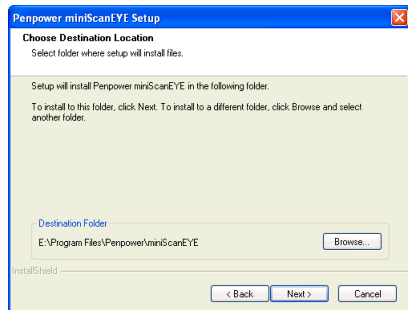
3. Click on **Next** to continue.



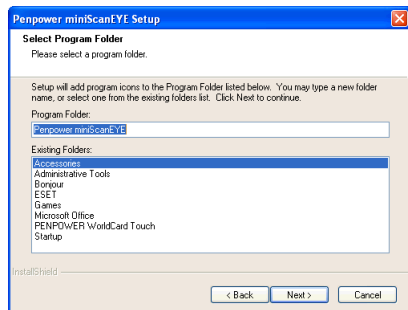
4. Please read the License Agreement, select I accept the terms of the license agreement and click Next to continue.



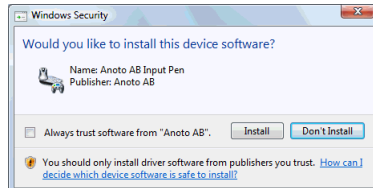
4. Choose the destination folder to install the software. This is usually left as default. Click **Next** to continue.



5. Choose the folder that you want to install mini ScanEYE to in Program Files. This is usually left as default. Click **Next** to continue.

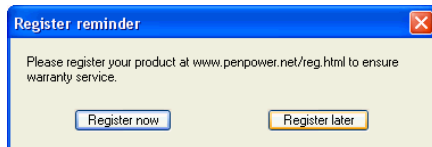



Note: When installing mini ScanEYE in the Vista OS, the system may show that Windows can't verify the publisher of this driver software. Please choose Install this driver software anyway.





6. After the software is installed, a register reminder window will pop up to remind you registering your product at www.penpower.net/reg.html for ensuring the warranty service. Click **Register now** to register. If you click **Register later**, you may go to **About/Register** when you need.



7. Click **Finish** to restart your computer.
Then you will see  icon on your desktop, double-click to run mini ScanEYE.

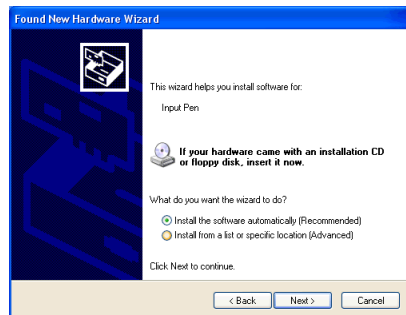


2.4 Hardware Installation

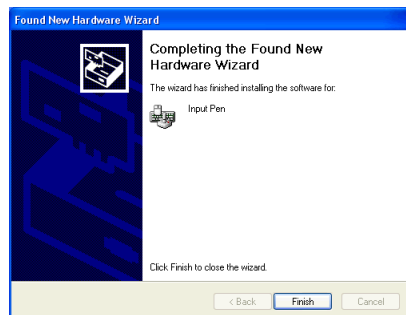
1. Plug in the mini ScanEYE into your computer's USB port. Some systems may show **Found New Hardware Wizard**. Please select **[No, not this time]** and click **Next** to continue.

Note: Some computers may shut down accidentally after connection. This is due to lack of power to support several USB devices. To avoid this problem, connect your mini ScanEYE and other USB devices to an extra-powered USB hub.

2. Select **[Install the software automatically]** and click **Next** to continue.

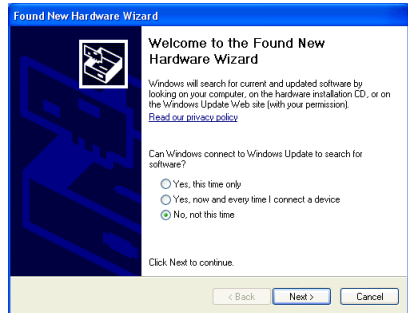


3. Click on **Finish** to end the installation.

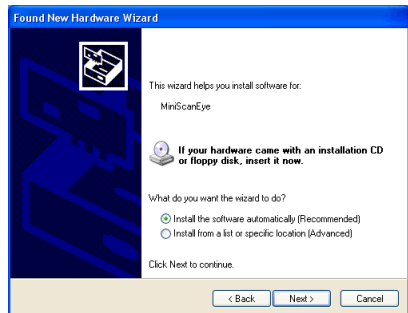




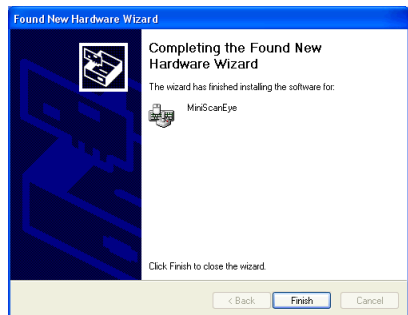
- When first time execute mini ScanEYE, some systems may show **Found New Hardware Wizard**. Please select **[No, not this time]** and click **Next** to continue.



- Select **[Install the software automatically]** and click **Next** to continue.



- Click on **Finish** to end the installation.



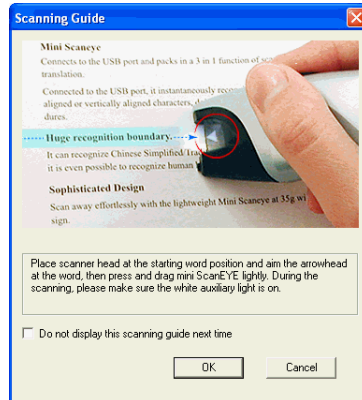
Note: When connecting mini ScanEYE to another USB port, you may follow the Hardware installation steps to install the Found New Hardware Wizard.

Chapter 3 Character Input

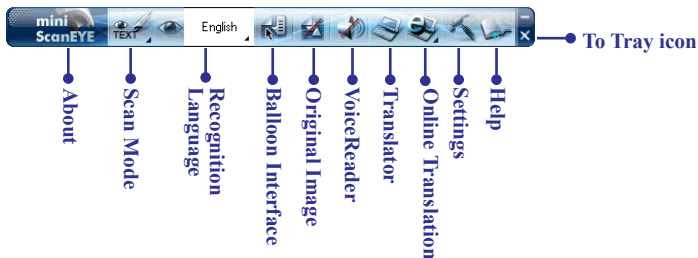
3.1 Run Penpower mini ScanEYE


Go to [Start/All Programs/Penpower miniScanEYE /Penpower miniScanEYE] or double click the  icon on the desktop to start miniScanEYE toolbar.

Note: When running the miniScanEYE first time, the Scanning Guide's window will appear. Please use the miniScanEYE as the Guide show you.



3.1.1 Toolbar







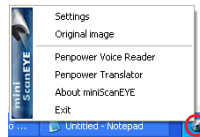
1. **Scan Mode:** Provide [Scan & Recognize] and [Send Image], click  to select scan mode. If you select **Scan & Recognize** mode, it will scan and recognize text to your computer. If you select **Send Image** mode, it will send the scanned image to your computer.



Note: When you use Send Image mode, you need to run the software which supports image format such as MS Word.




2. **Recognition Language:** mini ScanEYE can recognize English, Traditional Chinese, Simplified Chinese, Japanese, Korean, French, German, Italian and Spanish languages. Click  to select the language you desire to recognize.
3. **Balloon UI:** provides candidates, phrase correction, split character, merge characters, original image, punctuation, previous characters, related characters and translation. See 3.4 Using Balloon UI.
4. **Original Image:** display the scanned image. See 3.5 Displaying Original Image.
5. **Voice Reader:** read aloud Chinese articles in Mandarin or Cantonese. See Chapter 4 Penpower Voice Reader.
6. **Translator:** open Penpower Translator to translate Chinese-English/English-Chinese words and articles. See Chapter 5 Penpower Translator.
7. **Online Translation:** Open the dictionary website for inputting and translating words.
8. **Settings:** provide Recognition Setting, General, Property, Translation Website Set up and Interface Language settings. See 3.3 Settings and Scan Tips.
9. Click  to minimize the toolbar to Taskbar.
10. Click  to minimize the toolbar to tray icon. Double-click the tray icon will open the toolbar. Right click on  to open the function menu.




3.2 Scan to Computer

3.2.1 Scan & Recognize

1. Select **[Scan & Recognize]** from **[Scan Mode]** .
2. Select the language you desire to recognize from **[Recognition Language]**.
3. Open any word processor (i.e Microsoft Word or Wordpad) and place your cursor in there as usual before you start typing.
4. Place a document on the table and place scanner head at the starting word position and aim the arrowhead at the word, then press and drag mini ScanEYE lightly. During the scanning, please make sure the white auxiliary light is on.
5. The characters that the pen has passed through will be recognized to your desired word processor as following:

蒙恬全屏幕手写精灵

3.2.2 Send Image


1. Select **[Send Image]** from **[Scan Mode]** .
2. Open a word processor which can contain images (i.e Microsoft Word) and place your cursor in there as usual before you start typing.
3. Place a document on the table and place scanner head at the starting word or picture position and aim the arrowhead at the word, the press and drag mini ScanEYE lightly. During the scanning, please make sure the white auxiliary light is on.
4. The words or pictures that the pen has passed through will be scanned to your desired word processor as following:





3.3 Settings and Scan Tips

3.3.1 Language Settings

Besides selecting recognition language from the toolbar, you can also click **[Settings]**  from the toolbar to select recognition language and recognition results. Different settings will get different recognition results.

In **[Recognition Setting]**, you will find **Recognition Language** setting.

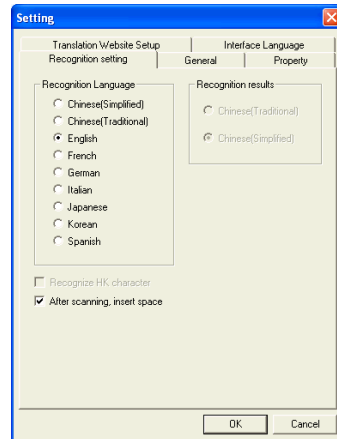
If you select Traditional Chinese or Simplified Chinese, you can find the setting of Recognition results on the right side, select the one you wish to input to your computer.

* Recognition Language

Accord with your document to choose a recognition language.

* Recognition Results

Select the type of Chinese for the inputting Chinese characters.



Tip: mini ScanEYE can actually convert Traditional text on your document to a Simplified Chinese oriented result vice versa, in which you can select a different combination.

* Recognize HK Character

If you select Traditional Chinese recognition language, you can check Check this option to recognize Hongkong characters. You can connect to <http://www.microsoft.com/hk/hkses/default.aspx> to check the Hong Kong characters list.

* After Scanning Insert Space

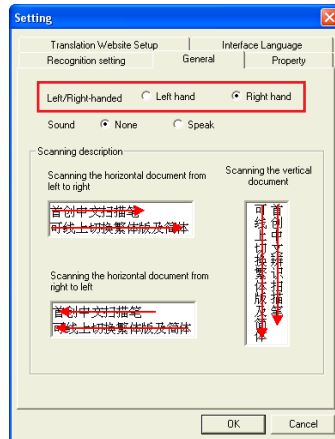
If you select English recognition language, you can check **After Scanning Insert Space**. When scanning English words, the system will automatically add a space in the end.

3.3.2 Scan Direction

* Scan Direction Settings

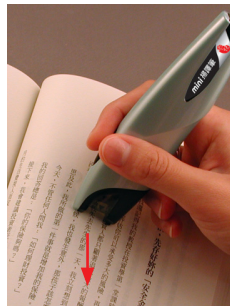
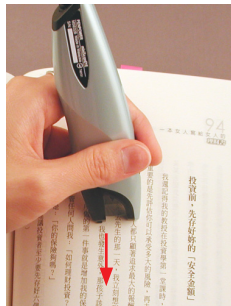
mini ScanEYE must be used to scan the characters in a consistent direction, any changes to the direction will cause inaccurate recognition results.

Go to the **General** tab and you will be able to change the configuration settings according to how you hold the pen and the direction which you want to scan.



* Scanning Vertically Aligned Text

When scanning vertically aligned text, please scan the text in top to bottom fashion and have the characters centered at the middle of your pen as indicated by the centre marker line.





*** Scanning Horizontal Text**

When scanning horizontal text, you can choose the left-hand or right-hand option and please the pen on the text, moving from left to right or right to left depending on the option you have set previously.



Right hand: Scan from left to right or from right to left



Left hand: Scan from right to left or from left to right

Note: Penpower mini ScanEYE is able to scan and recognize one row of characters at any time, please place the pen in such a way that the centre marker is at the centre of the character.

*** Practice**

According to what has been discussed previously, please scan the illustrated text below, in a horizontal and vertical fashion. Do not introduce abrupt changes when scanning, i.e the speed of moving your pen or scanning too fast.

If you have successfully scanned the text with the correct recognition results, you are now ready to put mini ScanEYE to actual use!

蒙恬扫译笔中文辨识扫描翻译

蒙恬扫译笔中文辨识扫描翻译

3.3.3 Speech

mini ScanEYE can speak English, Mandarin and Cantonese. When select Traditional Chinese or Simplified Chinese as the Recognition Language in the Recognition setting, it will be able to speak **Mandarin** and **Cantonese**. When select **English**, you can choose speak or none speak.

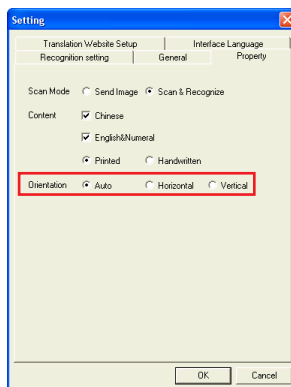


3.3.4 Scanning Horizontal or Vertically Aligned Text

When you install the Penpower mini ScanEYE, the default setting for the text direction is detect automatically. However, you can manually set the desired text direction of your choice and start scanning too. You can still leave it at default being detected automatically but however, as mini ScanEYE will need to detect the text direction, scanning speed will be slower too.

If you know that all your text is in a certain direction, you can set the mini ScanEYE to scan in only one direction based on the setting just discussed: **Horizontal** or **Vertical**.

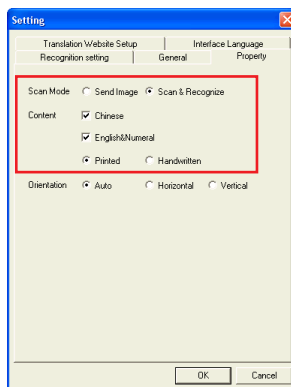
Go to the **Property** tab and choose your desired text direction under **Orientation**.



3.3.5 Property Settings

In **Property** Settings, provides selection of **Scan Mode** and **Content**. Depend on your desire to select **Scan Mode**. If you select **Send Text**, it will scan and recognize text to your computer. If you select **Send Image**, it will send the scanned image to your computer.

You can depend on the document you want to scan to select **Content**. It provides Chinese, Japanese, Korean, English & Numeral, **Printed** or **Handwritten**. Select identical language for higher accuracy.



***Tip:** When scanning handwritten text, the scanning results may vary according to handwriting, so the optimal recognition can be achieved when the text is properly aligned and the size must be within the scanning range of the pen.*

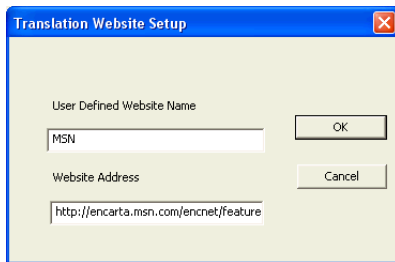
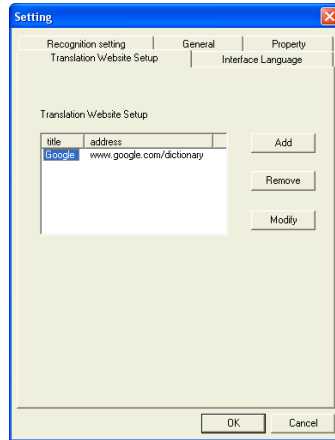
***Note:** The Content setting accords with the Recognition Language setting to display the supported settings.*

3.3.6 Translation Website Set Up

Translation Website Set Up can let you add, remove or modify the Translation Websites.

Click **Add** button to open the Translation Website Set Up window. You can input a dictionary Website name and its url address, then click **OK**.

You will find the new Translation Website when clicking Online Translation button from the toolbar. Click it to open the Website.

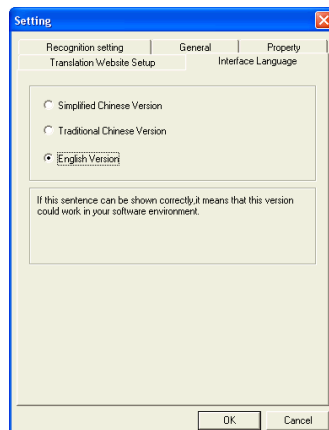


Google
MSN

3.3.7 Interface Language Settings

Interface Language Settings can let you choose Traditional Chinese, Simplified Chinese or English for user interface language. After choosing the language, you may check the description.

If the description does not display properly, which means your Windows OS does not support the language display. Please choose another language.





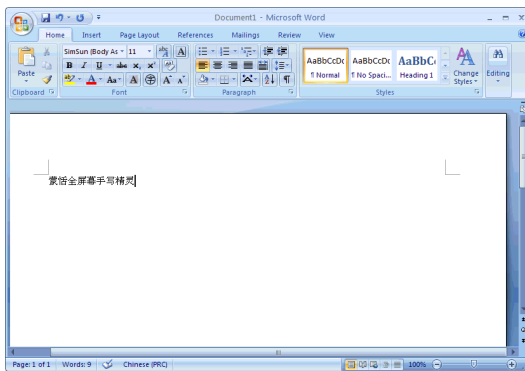
3.4 Using Balloon UI

Click [Balloon Interface] button can launch Balloon Interface function.



When using mini ScanEYE in Balloon UI, all scanning results will be directly transferred to the desired application.




For example, scan “蒙恬全屏手写精灵” into MS Word continuously.



3.4.1 Correct a Certain Character

When you want to correct a certain character, all you need to do is to leave your cursor on the character for 1-2 seconds and a window showing a list of suggested corrections will be presented to you. This will enable you quicker correction and a faster way of inputting characters into your desired application.

Tip: *You only need to leave your cursor on the character, you do not need to click any buttons.*

When the pop up window appear, you will have a list of suggested corrections, character combination buttons  or  hover your cursor over the display original text button .



* Candidates

If you find an incorrect character in your result box, you can use the candidate function to replace with the correct character.

1. As per the illustration, the character has been recognized incorrectly.


2. Leave your cursor on the character for 1-2 seconds and a window showing a list of suggested corrections will be presented.
3. If the correct character appears among the list of characters presented, you can click on the character to have your current incorrect character replaced.
5. Lastly, notice that the wrong character has been replaced.



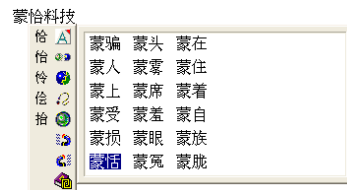
*** Previous Characters and Related Characters**


In any continuous text (2 characters), the first character is the second character's uplink, while the second character is the first character's downlink. For example 科技, where 科 is 技's uplink, while the character 技 is 科's downlink.

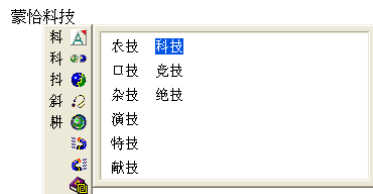
1. When using the mini ScanEYE, the recognition results will be directly transferred to the desired application.
2. As shown in the illustration, the character 恬 has been recognized incorrectly as 恰 as well as 科 which also has been incorrectly recognized as 料.

3. Leave your cursor on the character 恰 for 1-2 seconds and a window will pop up listing possible characters. In the pop up window, click on the magnet which is facing left  and you will notice another pop up window which shows you a list of combination which the system thinks are possible replacements for the resulting recognition.

蒙恰科技



4. Leave your cursor on the character 料 for 1-2 seconds, which will once again invoke the pop up window with the list of possible replacements. This time round, click on the magnet which is facing right  and the very same panel will pop up again with a list of combination of characters for you to choose from.



5. After the correct combination, the correct resulting text will now appear in the result box.

蒙恬科技


Note: Only Chinese recognition language provides combination list.



* Split Character

On the contrary, when the strokes in 2 characters are too close to each other, they may be recognized together as 1 character. The character split function can be used to split the strokes into 2 separate characters.

Scan the characters 日月星辰, assuming that both the characters 日 and 月 are being recognized as 1 character, resulting in 明. As both the characters are too close to each other, they are being recognized as 1 character by the system, resulting in 明星辰.

Leave your cursor on the character 明 for 1-2 seconds and a window will pop up with a list of buttons. You can click on  to split up the character 明 into 2 characters, resulting in 日 and 月.

明星辰|




日月星辰|

* Merge Character

When the strokes in a character are distanced too far from one another, they are usually recognised as different characters rather than 1 character. Now you can actually make use of the inbuilt character combination function and combine both characters into 1 single character.

Scan the characters 栋梁 and assuming that the result do not appear correctly, you might get 木东梁 as illustrated in the figure. As there might be some varying issues, now the character has been split into 2 different characters, being 木 and 东.


Leave your cursor on the character 木 for 1-2 seconds and a window will pop up with a list of buttons. Click on the second button  and you will have the separate characters combined into a single character 栋.



木东梁| ↵



栋梁| ↵

* Phrase Correction

In Full Screen mode if you wish to enter a common phrase such as an idiom, if you aren't sure of how to write one of the characters you can substitute a similar sounding character instead. If you are not sure of the character's pronunciation either, choose any at random. When you have finished writing the phrase, select the uncertain character with the mouse then click on the phrase correction button . The system will examine the four characters before or after this particular character to guess what you meant and make the change.

1. When entering an idiom in Full-Screen mode such as 『拔苗助长』, if you are not sure of how to write the character 『拔』, you can enter the character 『一』 instead to input 『一苗助长』.
2. Move the mouse over the character 『一』 and pause for a moment to bring up the “Candidate Characters Window”. Click the phrase correction button  and the 『一』 character will be changed to 『拔』.
3. If the phrase correction function came up with multiple candidate words, these will be shown in the candidate words window for you to choose from. For example, if the input was 『股份一限公司』 when you pause the mouse cursor over the 『一』 character, this will bring up the “Candidate Characters Window”. Pressing the phrase correction button  will bring up a list of all phrase correction candidate words for you to choose and make the correction with.

一苗助长

一苗助长



拔苗助长

股份一限公司




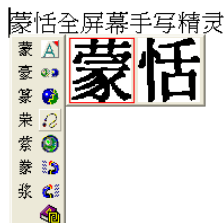
Note: Only Chinese recognition language provides Phrase Correction function.



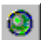
3.4.2 Original Image

After making changes to the results, you can check your original scan to look at the difference and look at the original text when scanned.

Leave your cursor on the character for 1-2 seconds and a window will pop up with a list of buttons. Hold down the third button  from the left and you will see the original text being displayed.




3.4.3 Punctuation

Click on  and a panel listing of punctuation marks will be displayed accordingly, allowing you to input half shaped or full shaped punctuation marks.







3.4.4 Translation

The Balloon Interface provides you the translation function. Whenever you do not know the scanning Chinese or English words, you may check the translation via the online translation function.

When moving your cursor over the scanned word, a pop-up window will appear. Click  button to start online translation function. The translation window will close when moving cursor to other area.



In the translation window, you may click  button to read out the unfamiliar Chinese or English words aloud. Click  or  to check the last or next word. Click  to see phrase and further explanation.



Note: Only Chinese and English recognition language provides Online Translation function.


3.5 Displaying Original Image

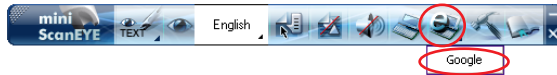
Click [Original Image] button on the toolbar to open the **Original Image** windows. Then you can check your original scanned image to compare with the original text when scanning.





3.6 Online Translation

1. Click **[Online Translation]**  and select a translation Website from the toolbar. It will open the Internet Explorer, browse the translation Website and open the mini ScanEYE Translator window.



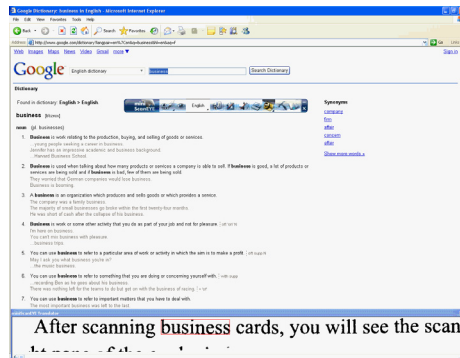
Tip: You can set the Website links from the Translation Settings. Please refer to 3.3.6 Translation Website Set Up.

2. Place a document on the table, place scan head at the starting word position and aim the Scan Tip at the word, the press and drag mini ScanEYE hardware smoothly. During the scanning, please make sure the white auxiliary light is on.

Note: Before scanning , please select the Recognition Language which match the scanning words.

3. The translation result of the first word that the mini ScanEYE hardware has passed through will be displayed in the Website. The scanned image will also be shown in the mini ScanEYE Translator window as well.

Note: If the Website does not support Enter function, please click translate button manually.



4. If you have scanned more than one word, you can press the hardware button to see the translation of the next word.

Note: If the Website does not support Enter function, it also cannot support hardware button.

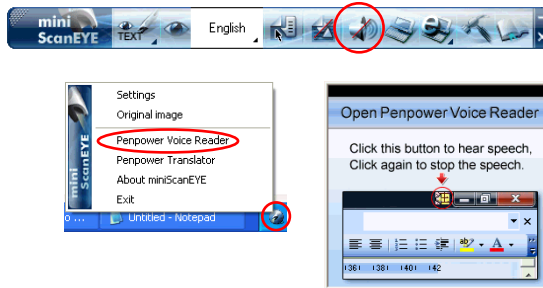
5. Click **[Translation]**  or close the mini ScanEYE Translator window to go back to the Scan Mode.


Chapter 4 Penpower Voice Reader

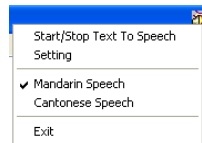
Penpower VoiceReader utilizes a state of the art text-to-speech technology, it reads in fluent Mandarin or Cantonese of any articles. You can use it as a tool for fast proofreading or in teaching the correct Mandarin/Cantonese pronunciation.



4.1 Open Penpower Voice Reader

1. Click **[VoiceReader]** button from the toolbar or **[Penpower VoiceReader]** from the tray icon menu to run Penpower VoiceReader.



2. When it starts up, there will be an icon on/off button  on the top right corner of your application, such as Word. You can click the icon to select **Mandarin Speech** or **Cantonese Speech**.



3. Choose a paragraph, click  and select **[Start/Stop Text to Speech]**, the selected paragraph will be read out. Check your speaker if there's no sound.
4. During reading, click , and selecting **[Start/Stop Text to Speech]**, it will stop reading.



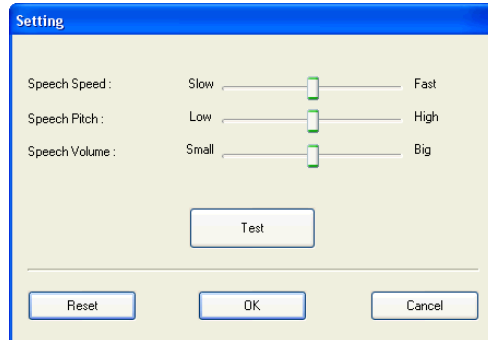
4.2 VoiceReader Setting

Click , select [Setting], the [Setting] window will appear.


Speech Speed: Adjust speak speed.

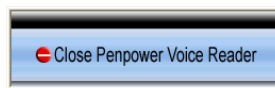
Speech Tone: Adjust tone level.

Speech Volume: Adjust speak volume.



4.3 Turn off Penpower VoiceReader

1. Click , select [Exit].
2. When you see the following image, the Penpower VoiceReader is turned off and the icon on the upper right corner disappears.

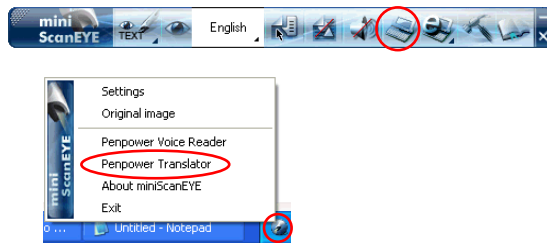


Chapter 5 Penpower Translator


This is a Chinese-English bidirectional translation software, which includes Chinese-English/English-Chinese dictionary lookup and Chinese-English/English-Chinese phrasal translation.

5.1 Open Penpower Translator

Click **[Translator]** button from the toolbar or **[Penpower Translator]** from the tray icon menu to run Penpower Translator.




5.2 English Character Dictionary Lookup



1. Click on .
2. On the top left hand corner, enter the English word that you want to look up in the dictionary and hit Enter. The explanation in Chinese will pop up almost immediately.






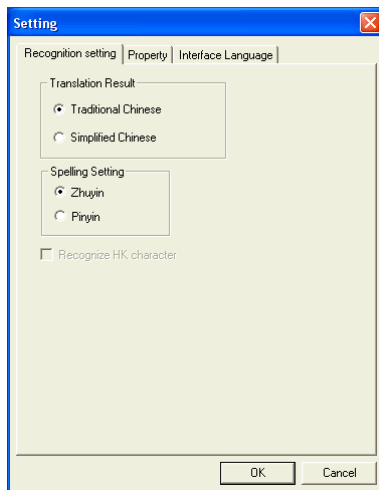
There are a number of buttons which you can see the usage example or the detailed explanation.

Click  will command the system to read out the character.

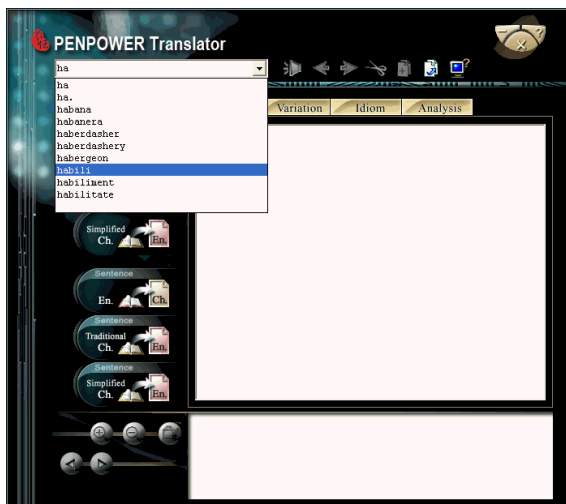
Previous Word  **Next Word** 
buttons let you check the meaning of the next character or the previous one.

Click **Copy**  button to copy the selected contents.

Click **System Setting**  button to invoke the **Setting** window for setting recognition language recognition results, document Property and Interface language .



Tip: Due to the pre-emptive nature of the Translator, you do not need to input the characters completely. Hitting Enter will usually let the system complete the word and translation for you.

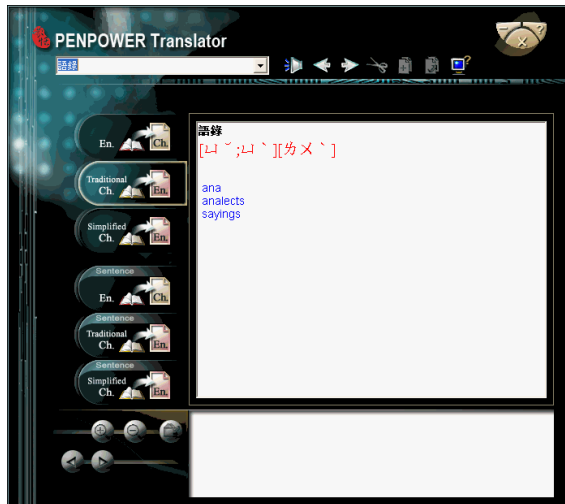



5.3 Chinese Character Dictionary

1. Click on  to enable the Chinese dictionary.

Tip: If the Chinese word you wish to look up is Simplified Chinese, please select the  translation option.

2. In similar fashion, input the Chinese character that you want to look up in the text field in the top left hand corner. Hit Enter and the system will present the explanation in English.





Click  to listen the pronunciation.

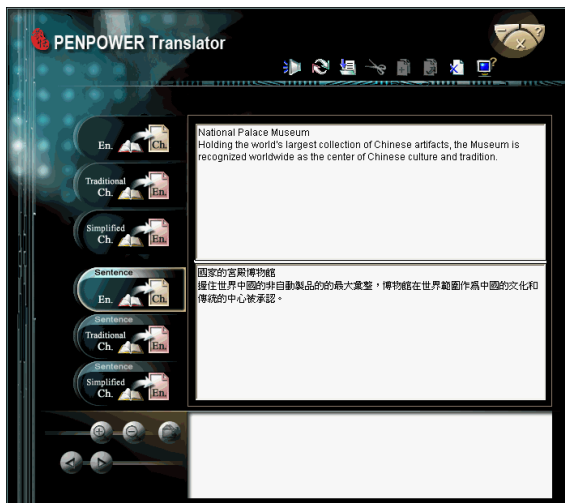
Click **Previous Item** / **Next Item**  buttons to check the meaning of the next character or the previous one.



5.4 English Phrasal Dictionary


1. Click on  to enable the English phrasal dictionary.
2. In the top left hand corner, input the text to be translated and explained in the field and click on  to translate.


Tip: During English phrasal translation, avoid inputting Chinese half-shaped punctuation to increase the translation accuracy.





Click **Read**  button to read all information from window you selected.

Click **Save**  button to save the translated information to text file.


Click **Cut**  button to cut the selected contacts.

Click **Copy**  button to copy the selected contents.


Click **Paste**  button to paste the selected contacts.

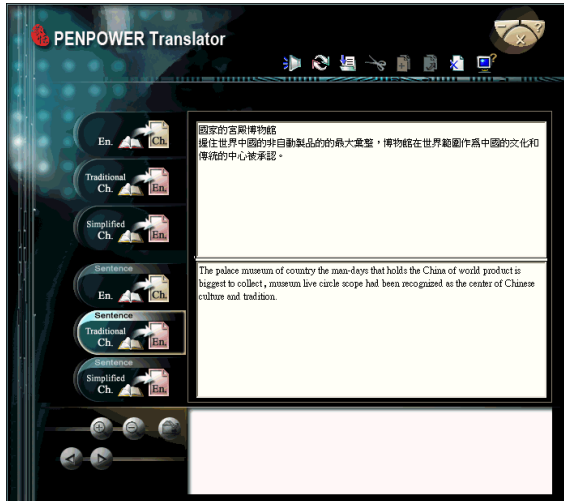
Click **Delete**  button to delete the selected contacts.

5.5 Chinese Phrasal Dictionary

1. Click on  to invoke the Chinese-English translation.

Tip: If the Chinese sentence you wish to look up is Simplified Chinese, please select the  translation option.

2. In the above frame, input the phrase or paragraph where appropriate and click on  to start the translation. The result will be displayed in the frame below.



Click **Read**  button to read all information from window you selected.








5.6 Translating Scanned Input

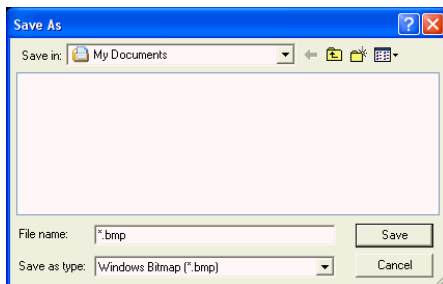
Other than checking up on words or phrases through the use of keyboard, you can also make use of mini ScanEYE to input the phrase for you, while the original text will be displayed at the bottom of the window for you.




When translating a single word, inputting the word with Scaneye will let you input the complete phrase. Every push on the button on the pen will incur the translation on the next word and so forth.

Clicking on the **Previous Word**  or the **Next Word**  button will allow you to scroll through to the next or previous character in Translator's dictionary database, allowing you to look up on more meanings on the word's variants.

You can **zoom in**  or **zoom out**  to adjust the size of your scanning proportionally. You can also save the scan as a picture by clicking on .



You can also translate the whole paragraph of the scanning you have made with mini ScanEYE by clicking on , which will in turn translate whatever you have scanned into the opposite language. You can perform the translation phrase by phrase, or choose to have the translation done to the whole paragraph at one time.



You will not be able to use the **Previous Word**  / **Next Word**  buttons when you are in phrasal translation mode.



mini ScanEYE V3.0 User Manual

Edition: Released in July, 2009

Penpower Technology Ltd.,