

WorldPenScan Series

User Manual

Version: V4.1 Mac
Release: March, 2015

Penpower Technology Ltd.

Software User License Agreement

You are licensed to legally use this software program (“the Software”) by Penpower Technology Ltd (“Penpower”) under this license agreement (“The Agreement”). If you do not agree with any of the provisions in this Agreement, please do not install, copy or use the Software. By using the Software, you are deemed to fully understand and accept the provisions of this Agreement.

1. Intellectual Property

All intellectual property rights in the Software, together with all information and documents included in the packaging for the Software (including but not limited to copyrights), are property of Penpower or have been licensed to Penpower, and are protected by relevant laws and regulations.

2. License to Use

You are authorized to use the Software on one (1) single computer only. You may not use the Software on any other machines other than the said single computer.

3. Authority to Copy

The Software and all documents included with the Software, and copyright thereof, are property of Penpower. You are licensed to make one (1) copy of the Software for your personal backup purposes. All other acts of copying are strictly prohibited. The backup copy shall not be installed nor used while the Software is being used.

You may not sell, lease, disassemble, reverse engineer, copy, translate, adapt or derive the Software, or obtain the source code of the Software by any other means. You may not use the Software for any purposes other than those permitted under this Agreement.

4. Business Users

If you need to install or use the Software on more than one (1) computer, please contact Penpower or our local distributor to purchase a license for the additional use.

5. Liability

You agree to indemnify Penpower against all losses, costs, debts, settlement payments or other expenses (including but not limited to attorneys fees) arising from your breach of this Agreement, and you agree to compensate Penpower for all of the abovementioned damages.

6. No Warranty

Effectiveness of a packaged software in handling information is closely related to its software and hardware environment. The Software is published following careful development and product testing by Penpower, but Penpower is not able to conduct tests based on all possible combinations of software and hardware environment. Therefore,

Penpower is unable to promise nor warrant that there will be absolutely no risk of loss or damage of information, or any other kind of loss, during installation and/or execution of the Software. You must be fully aware of your risks in using the Software.

Penpower will provide you with the Software and support services in respect of the Software to the maximum extent permitted by law. However, Penpower does not warrant that the Software and information included in the package of the Software contain no defects or errors. Penpower is not liable for any indirect, special or incidental loss arising from the Software, including but not limited to loss of profits, damage to business reputation, cessation of work, hardware malfunction or damage, or any other commercial damage or loss arising from commercial use of the Software.

7. Third Party Offerings

The Software may allow you to access the contents, software applications and data services of a third party, including but not limited to a variety of Internet applications ("Third Party Offerings") and interoperate with them. Your access to and use of any Third Party Offering is governed by the agreed terms and conditions in connection with the offering and the copyright laws of the country the third party belongs to.

Third Party Offerings are not owned or provided by the Penpower. Third Party Offerings may at any time for any reason be modified or discontinued. Penpower does not control, endorse, or accept any responsibility associated with Third Party Offerings. Any agreement between you and any third party in connection with a Third Party Offering, including privacy policies and use of your personal information, delivery of and payment for goods and services, and any other terms, conditions, warranties, or representations of the third party associated with such agreement is solely a dealing between you and the third party. You should take into consideration and shall assume all risks or responsibilities in connection with the use of "Third Party Offerings."

8. Limitation of Liability and Damages

Except as expressly specified and expressly agreed to in writing by Penpower, Penpower shall not be responsible for any damage incurred by you for any reason under this Agreement. The maximum amount of compensation payable by Penpower, in respect of any damage incurred by you for any reason under this Agreement, is limited to the amount you have already paid to Penpower in respect of the Software.

Under no circumstances will Penpower be held liable for the possibility of loss, notwithstanding Penpower may be aware of the possibility of such loss.

9. Prohibition Against Sublicense

You are prohibited to assign the license in respect of the Software granted to you under this Agreement, or to grant a sublicense to another person.

10. Jurisdiction

With regards to any disputes arising from this Agreement, Penpower and you agree that the court having jurisdiction over the business location of Penpower will be the court in the first instance.⁰

11. Miscellaneous

In the event that any provision of this Agreement is found to be invalid at law, such invalidity will not affect the validity of any other provisions, or the legal enforceability of such other provisions.

FCC Statement

This equipment has been tested and found to comply with the limits for a Class B digital device, pursuant to Part 15 of the FCC Rules. These limits are designed to provide reasonable protection against harmful interference in a residential installation.

This equipment generates, uses and can radiate radio frequency energy and, if not installed and used in accordance with the instructions, may cause harmful interference to radio communications.

However, there is no guarantee that interference will not occur in a particular installation. If this equipment does cause harmful interference to radio or television reception, which can be determined by turning the equipment off and on, the user is encouraged to try to correct the interference by one of the following measures:

- Reorient or relocate the receiving antenna.
- Increase the separation between the equipment and receiver.
- Connect the equipment into an outlet on a circuit different from that to which the receiver is connected.
- Consult the dealer or an experienced radio/TV technician for help.

FCC Caution:

Any changes or modifications not expressly approved by the party responsible for compliance could void the user's authority to operate this equipment.

This device complies with Part 15 of the FCC Rules. Operation is subject to the following two conditions:

- (1) This device may not cause harmful interference, and
- (2) this device must accept any interference received, including interference that may cause undesired operation.

CE Warning

Hereby, PenPower, declares that this WorldPenScan X is in compliance with the essential requirements and other relevant provisions of Directive 1999/5/EC.

< IC RSS-GEN 7.1.5>Industry Canada Caution

This device complies with Industry Canada licence-exempt RSS standard(s).

Operation is subject to the following two conditions:

- (1) this device may not cause interference, and
- (2) this device must accept any interference, including interference that may cause undesired operation of the device.

Le present appareil est conforme aux CNR d'IndustrieCanadaapplicables aux appareils radio exempts de licence. L'exploitation est autorisee aux deux conditions suivantes :

- (1) l'appareil ne doit pas produire de brouillage, et
- (2) l'utilisateur de l'appareil doit accepter tout brouillage radioelectrique subi, meme si le brouillage est susceptible d'en compromettre le fonctionnement.

Contents

Chapter 1 Product Introduction	1-1
Chapter 2 Getting Started.....	2-1
2.1 System Requirements.....	2-1
2.2 Hardware Specification.....	2-1
2.2.1 WorldPenScan	2-1
2.2.2 WorldPenScan BT.....	2-2
2.2.3 WorldPanScan X.....	2-3
2.3 Software Installation	2-4
2.4 Launching WorldPenScan	2-6
2.5 Registration	2-6
2.6 Scanning Guide	2-6
2.7 Connect to Pen Scanner	2-7
(WorldPenScan/ WorldPenScan X are not applicable the following pairing procedure).....	2-7
Chapter 3 Scanning and Settings.....	3-1
3.1 WorldPenScan Toolbar	3-1
3.2 Scan Text and Image	3-3
3.2.1 Text Mode	3-3
3.2.2 Image Mode	3-3
3.3 Online Translation	3-4
3.3.1 Dictionary	3-4
3.3.2 Sentence Translation	3-5
3.4 Business Mode	3-6
3.5 Original Image	3-7
3.6 Settings.....	3-8
3.6.1 General Settings.....	3-8
3.6.2 Recognition Settings	3-11
3.6.3 Business Mode.....	3-13
3.6.4 StarDict Dictionary	3-14
3.6.5 Hardware Information (For WorldPenScan BT).....	3-15

There may be newer versions of the software that was released during or after this product's manufacturing date. If the content in the User Manual differs from the on-screen interface, please follow the instructions on the on-screen interface instead of the User Manual.

Chapter 1 Product Introduction

WorldPenScan series, the best input device, scans and recognizes lots of languages and put the scanned material into your computer via the USB interface. Whenever you come across any particular words or sentences that you do not understand, WorldPenScan series will scan for you.

With an ergonomic design, WorldPenScan series provides a comfortable handle which fits all left and right-handed users. Scan away effortlessly with the transparent scan tip. Where you see, where you scan.

- **Recognition in lots of languages**

The WorldPenScan can scan and recognize lots of languages, including English, French, German, Italian, Spanish, European, and East Asia characters.

- **Bluetooth wireless connection**

WorldPenScan X adopts the Bluetooth 4.0 - BLE technology to facilitate the data transmission to any mobile devices. The scanned result can be immediately digitized into texts and transmitted to Win/Mac PCs via USB port.

- **Business Mode**

The WorldPenScan has business mode, which can recognize bar codes and bank fonts (OCR-A, OCR-B, and MICR). An ideal product for business.

- **Output to multiple applications**

The WorldPenScan can be used in any editing applications, such as Word, Excel, Outlook...etc. You can get the result instantly.

- **Multiple Language Translation**

By sending the scanned and recognized words or sentences directly to on-line translators, you can instantly see the translation results by one click.

- **Scan image**

The WorldPenScan lets you scan and save the images into your document.

Chapter 2 Getting Started

2.1 System Requirements

- Intel based Macintosh
- Mac OS X 10.6.8 or later
- USB port / Bluetooth module(WorldPenScan BT)

2.2 Hardware Specification

2.2.1 WorldPenScan

- Dimensions: 130mm x 37mm x 18.5mm
- Weight: 30g
- Interface: USB 2.0
- Scanning speed: 15 cm/sec.
- Character size: 5~22 pt



Function button:

While scanning text or images, clicking the function button will function as the **[Enter]** key on the keyboard.

Tip: You can refer Section 3.6.1 to configure the function button as Enter, Tab, Space, Click, or Double click.



2.2.2 WorldPenScan BT

- Dimensions: 130mm x 37mm x 18.5mm
- Weight: 35g
- Interface: USB 2.0/ Bluetooth v2.1+EDR
- Built-in lithium polymer rechargeable battery
- Voltage and amperage: 4.75-5.25V (<100mA)
- Scanning speed: 15 cm/sec.
- Character size: 5~22 pt



Function button:

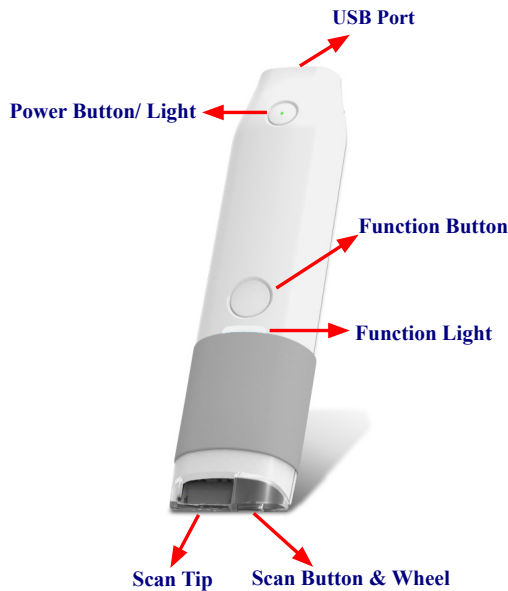
While scanning text or images, clicking the function button will function as the **[Enter]** key on the keyboard.

Tip 1: You can refer Section 3.6.1 to configure the function button as Enter, Tab, Space, Click, or Double click.

Tip 2: For first time use, please charge pen scanner over USB. It takes around 5 hours to be fully charged. You can see the battery status in [Settings] > [Hardware info].

2.2.3 WorldPanScan X

- Dimensions: 114.7mm x 33mm x 22.45mm
- Weight: 55g
- Interface: USB 2.0/Bluetooth v4.0 BLE
- Built-in lithium polymer rechargeable battery
- Voltage and amperage: 4.75~5.25V (<100mA)
- Scanning speed: 10 cm/sec.
- Character size: 6~22 pt



Function button:

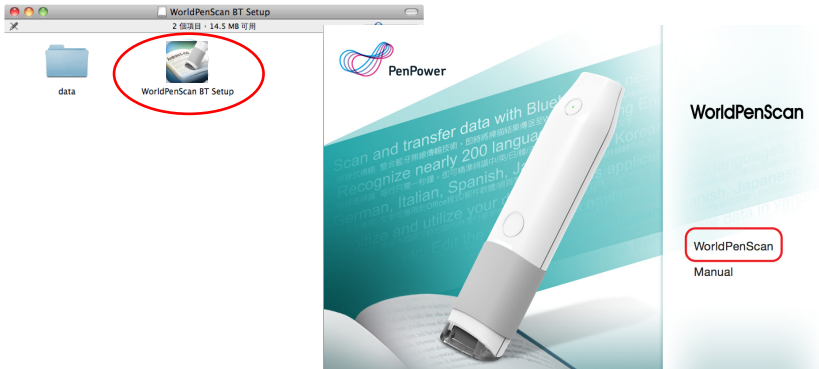
While scanning text or images, clicking the function button will function as the **[Enter]** key on the keyboard by default.

Tip: You can refer Section 3.6.1 to configure the function button as Enter, Tab, and-Space.

Note : Before using for the first time, please charge pen scanner over USB. It takes around 5 hours to be fully charged. You can see the battery status in [Settings] > [Hardware info]

2.3 Software Installation

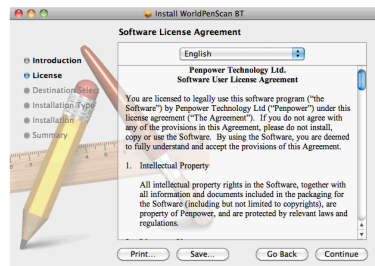
1. Insert the **WorldPenScan/ WorldPenScan BT** setup CD into the CD-ROM drive. Run the **Setup** and click **[WorldPenScan] / [WorldPenScan BT]** on the Installation window to install **WorldPenScan/ WorldPenScan BT**. (WorldPenScan BT for example.)



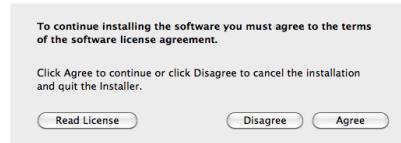
2. Please click **[Continue]** to install.



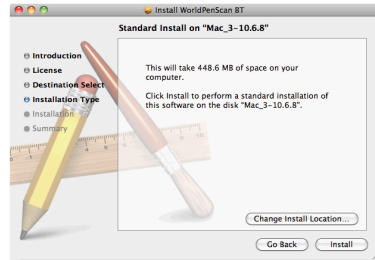
3. Please read the License Agreement, and click **[Continue]**.



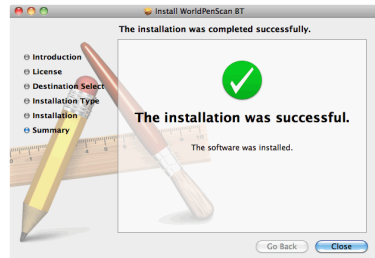
- Click **[Agree]** to accept the license agreement.



- Confirm the installation location and click **[Install]** to continue.

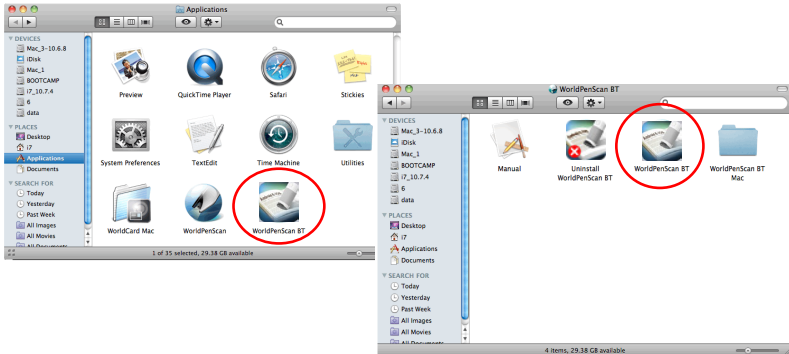


- Click **[Close]** to finish the installation process.



2.4 Launching WorldPenScan

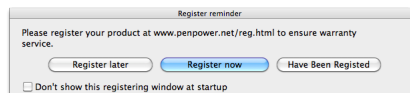
Run [Go]/[Applications]/[WorldPenScan/ WorldPenScan BT]/[WorldPenScan/ WorldPenScan BT] to launch **WorldPenScan** or **WorldPenScan BT**.



2.5 Registration

When you first time run the **WorldPenScan** series, a registration reminder will appear. Please click on **[Register now]** to register and ensure the warranty service. You can also click **[Register later]** to close the reminder. When you need to register, click the **[Tools]** button and select **[About]** from the toolbar and then click on **[Register]**. If you have registered, please tap **[Have Been Registered]**.

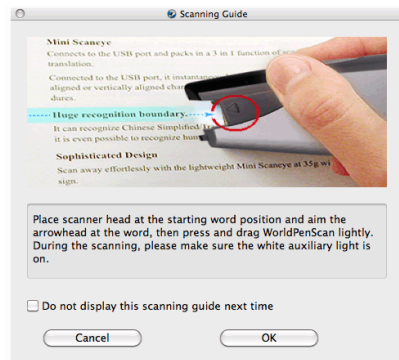
Tip: If you do not need to be reminded again, you can check [Don't show this page at startup].



2.6 Scanning Guide

A **Scanning Guide** will appear after the registration reminder. Use the **WorldPenScan** series as the guide directs.


Note: If you would not like to read the message again, you can check [Do not display this scanning guide next time], and click [OK].

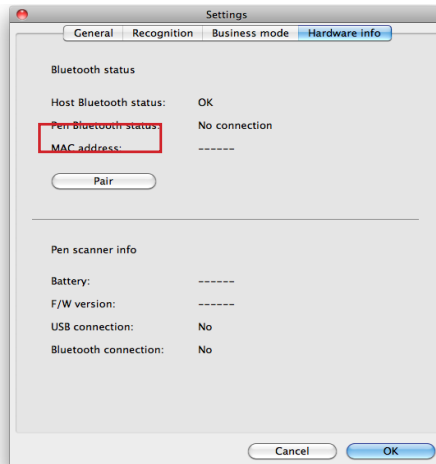


2.7 Connect to Pen Scanner

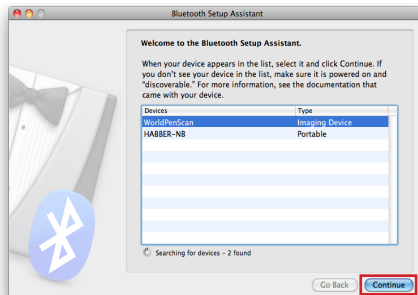
You can plug pen scanner into your computer's USB port via the USB cable to use WorldPenScan or WorldPenScan BT. Besides, WorldPenScan BT can be connected with computer via Bluetooth for use. Please follow the instructions to pair your computer and pen scanner with Bluetooth at first time use.

(WorldPenScan/ WorldPenScan X are not applicable the following pairing procedure)

1. Press the function button on pen scanner until the status light blinks. When the status light blinks, you can begin to pair the computer with pen scanner.
2. Launch WorldPenScan BT and click **[Tools]**  button to select **[Settings]** from the drop-down menu. Then go to the **[Hardware info]** page.
3. Click **[Pair]**.

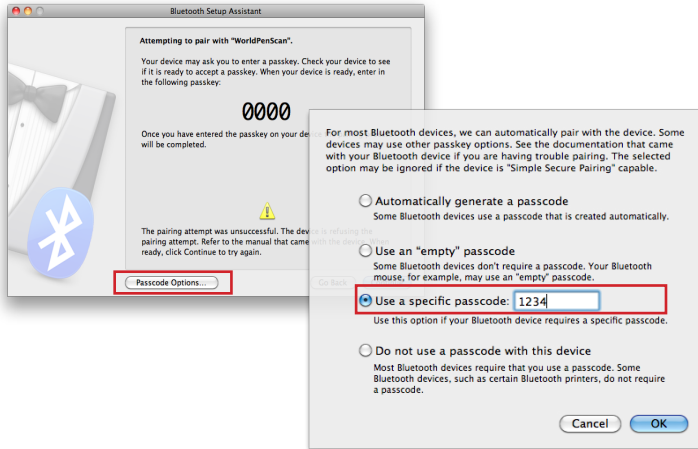


4. Select **[WorldPenScan]** on **[Bluetooth Setup Assistant]** and click **[Continue]**.

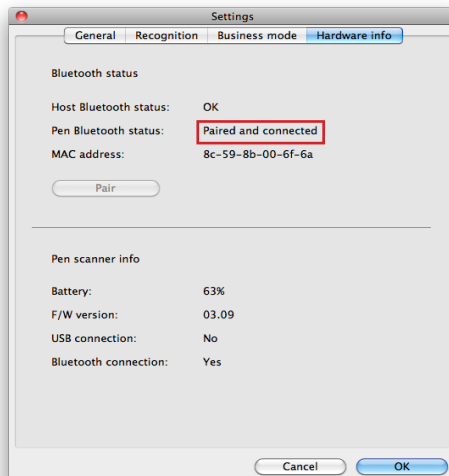




5. The system will remind you that the pairing attempt was unsuccessful. Please click on **[Passcode Options]** on the left button; then select **[Use a specific passcode]** and enter the pen scanner's default passcode: 1234.

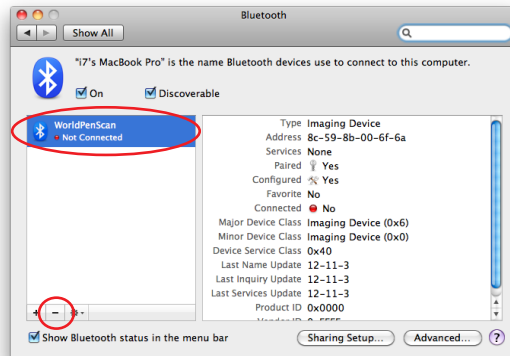


6. Then, the pen scanner will connect to your PC automatically. When pen scanner is paired with your PC successfully, the status light on pen scanner blinks slowly (blink every 3 seconds), and the pen scanner will connect with WorldPenScan BT automatically. You can begin to use WorldPenScan BT when the pen bluetooth status changed to **[Paired and connected]**.



Note 1: Long press the function button on pen scanner will turn off pen scanner. Next time you want to use WorldPenScan BT, please shortly press function button to turn on pen scanner. The pen scanner will connect to WorldPenScan BT software automatically. There is no need to pair your computer and pen scanner again.

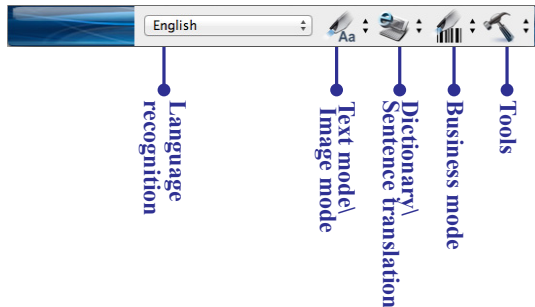
Note 2: If your computer has paired with pen scanner but cannot to connect to pen scanner for use, you can open Bluetooth preferences to remove [WorldPenScan] and follow the instructions to pair your computer and pen scanner again.




Note 2: If pen scanner is not connected with the software nor executed more than 10 minutes, or is connected with the software but not executed more than 30 minutes, the pen scanner will automatically shut down to save power.

Chapter 3 Scanning and Settings




3.1 WorldPenScan Toolbar






1. **Language Recognition:** The **WorldPenScan** series can recognize Traditional Chinese, Simplified Chinese, English, French, German, Italian, Japanese, Korean, Spanish and more text. Click  to select the language you would like to scan.

Note: The Language Recognition must match the language of the content for optimal accuracy.



2. **Text mode:** The **[Text mode]**  is the default scan mode for scanning an article or a sentence directly. The scanned word or sentence will be recognized and sent as typed text to your computer. Please refer to 3.2.1 **Text Mode** for more detailed information.
3. **Image mode:** You can select **[Image mode]** in the drop-down menu from the button  to scan images or text. They will be sent to your computer in image formats. Please refer to 3.2.2 **Image Mode** for more detailed information.
4. **Dictionary:** Selecting **[Dictionary]** in the drop-down menu from the button  can provide you the translation result of every scanned word. Please refer to 3.3 **Online Translation** for more detailed information.




5. **Sentence translation:** Selecting [**Sentence translation**] in the drop-down menu from the button  will provide the translations of the sentences you scan. Please refer to 3.3 **Online Translation** for more detailed information.
6. **Business Mode** : You can select [**Barcode**], [**MICR**], or [**OCR A/B**] from **Business Mode**. These modes allow you to scan barcodes, invoices, checks, bills, postal codes, coupon numbers, and racing numbers. In order to have higher recognition accuracy, you may use the **Business mode** to recognize different documents. Please refer to 3.4 **Business Mode** for more detailed information.
7. **Tools** : Provide Original Image, Settings, Help and About WorldPenScan series.
 - . **Original Image:** Display the scanned image. See 3.5 Original Image.
 - . **Settings:** Provide general, recognition, and business mode settings. See 3.7 Settings for more detailed information.
 - . **Help:** Open this user manual.
 - . **About:** See the product information.

3.2 Scan Text and Image


3.2.1 Text Mode


When you want to scan an article or a sentence directly into your computer, you can use [Text mode] .

1. Select [Text mode] in the drop-down menu from the button .
2. Select the language of the text that you want to scan from [Language recognition].
3. Open any word processor, for example Microsoft Word or WordPad, and then click the location where you want to input.
4. Place a document on a flat surface and place the scan tip at the front of your desired scan area. Aim the scan tip arrow at the center of the desired scan area, and then press and drag the pen scanner in a straight line across the area like a highlighter. During the scanning, please make sure the white auxiliary light is on.
5. Stop applying pressure to the pen to stop scanning. The text that the pen has scanned will be displayed in your word processor immediately.

Note: WorldPenScan series is able to scan and recognize one row of characters at a time. Please place the scan tip arrow at the center of the line.

3.2.2 Image Mode

When you want to scan text or images into your computer in image formats, you can use [Image mode] .

1. Select [Image mode] in drop-down menu from the button .
2. Open a word processor that is able to input images, for example Microsoft Word. Click the location where you would like to input the scanned images.
3. Place a document on the a flat surface and place the scan tip at the starting word or picture. Aim the scan tip arrow at the center of the scan area, and then press and drag the scan pen in a straight line like a highlighter. The white auxiliary light from the scan tip indicates the pen is scanning.
4. Stop applying pressure to the scan pen to stop scanning. The scanned picture will be displayed in your word processor in an image format.




3.3 Online Translation


WorldPenScan series provides online translation function to translate scanned words and sentences by **[Dictionary]** and **[Sentence Translation]**. WorldPenScan series collects the translations results from websites and display them in its translation window.

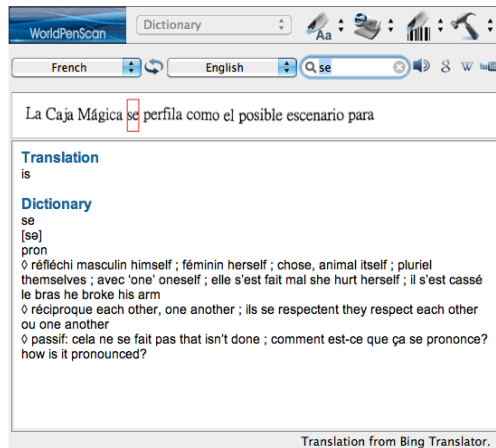
Note: Please connect to the internet while using the online translation function.



3.3.1 Dictionary

1. Select **[Dictionary]** in the drop-down menu from the button .
2. Select the language you want to translate from and the language you want to translate to.







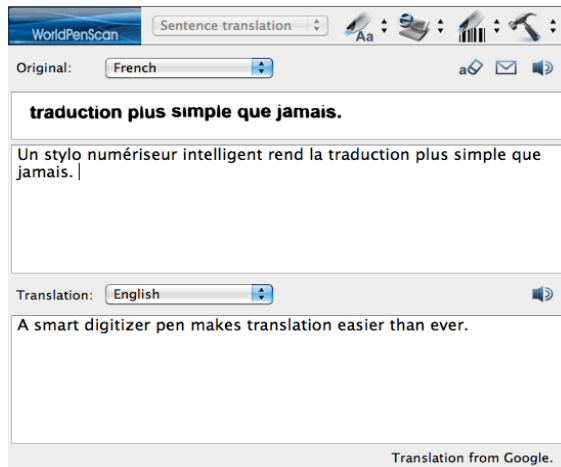
3. Select the translate engine you want to use .
4. Aim the scan tip arrow at the center of the desired scan area, and then press and drag the pen scanner in a straight line across the area like a highlighter. During the scanning, please make sure the white auxiliary light is on.
5. Stop applying pressure to the scan pen to stop scanning. The word and its translation result will be displayed in the window as below. At the bottom of the window, you can see the source of the translation. If you scan more than one word, you can press the **[Function button]** on the scan pen to see the translation of the next recognizable word.



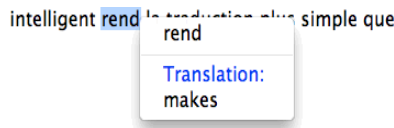
5. The translated word will also be shown in the search box. You can click  to listen to the pronunciation of this word or click  to search for more information on Google, Wikipedia, or YouTube. You can also type in the search bar to find more information.

3.3.2 Sentence Translation

1. Select **[Sentence translation]** in the drop-down menu from the button .
2. Select the language you want to translate from **Original:** and the language you want to translate to **Translation:** .
3. Select the translate engine you want to use **Default Translator**.
4. Aim the scan tip arrow at the center of the desired scan area, and then press and drag the pen scanner in a straight line across the area like a highlighter. During the scanning, please make sure the white auxiliary light is on. The original image, scanned sentence, and translation result will be displayed automatically in the window as below.
5. You can click  to delete the contents, click  to send the scanned text out by e-mail, and click  to listen to the pronunciation.



Tip: You can select words in the sentence and see their translations.





3.4 Business Mode

The Business Mode allows you to scan barcodes, invoices, checks, bills, postal codes, coupon numbers and racing numbers etc.

The fonts that the Business Mode supports are OCR A, OCR B, MICR, and more fonts as the samples below:

OCR A: 0 1 2 3 A B C a b c

OCR B: 0 1 2 3 A B C a b c

MS Gothic: 0 1 2 3 A B C a b c

MICR : 1 2 3 4 5 6 7 8 9 0

The barcodes that the Business Mode supports are Codabar, Code 128, Code 39, Code 93, EAN 8, EAN 13, IATA 2 of 5, Industrial 2 of 5, Interleaved 2 of 5, Matrix 2 of 5, Patch, PostNet, UCC-128, UPC-A and UPC-E.

1. Select **[Barcode]**, **[MICR]**, or **[OCR A/B]** in the drop-down menu from the button .


Note: For higher recognition accuracy, before you start the Business Mode, please select the font that you want to scan in **[Tools]** \ **[Settings]** \ **[Business Mode]**. Please refer to 3.7.2 Recognition Settings.

2. Open your application or any word processor, for example Microsoft Word. Click the location where you would like to input the scanned text or numbers.
3. Place a document on a flat surface and place the scan tip at the front of your desired scan area. Aim the scan tip arrow at the center of the desired scan area, and then press and drag the pen scanner in a straight line across the area like a highlighter. During the scanning, please make sure the white auxiliary light is on.
4. Stop applying pressure to the pen to stop scanning. The scanned text or numbers are displayed in your application or word processor immediately.

Note 1: When scanning barcodes, please aim pen scanner at the upper side of barcodes, not at the center, to have higher recognition accuracy.

Tip: You can select a range of your desired scan document in the Settings to have higher recognition accuracy. Please refer to 3.7.3 Recognition Settings.


3.5 Original Image

Click [Tools]  button and select the [Original Image] option from the drop-down menu to open the [Original Image] window. After scanning, the [Original Image] window displays the scanned image. You can check the scanned image to compare with the original text. This can help you improving your scan technique for more accurate recognition results.



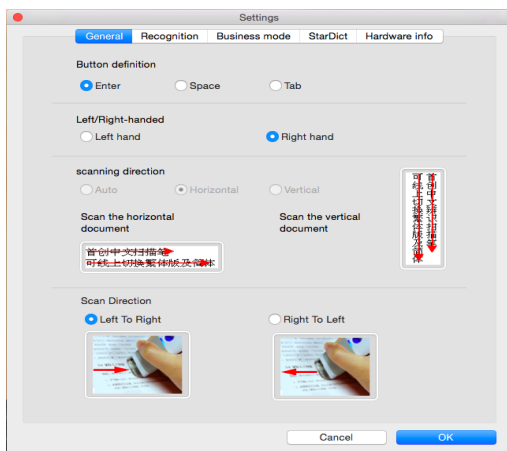
Tip: You can click on the original image to save the image file.

3.6 Settings

Click [Tools]  from the toolbar and select [Settings] from the drop-down menu to set up the general, recognition and online translation settings.

3.6.1 General Settings

In the [General] setting page, you can set up the scan direction and left/right-handed.



Button Definition

The default function of Function Button is Enter. You can replace Enter by Space and Tab. Select the options under Button definition and then you can select which function you want the Function Button to be.

Scan Direction

WorldPenScan series must be used to scan the characters in consistent direction, any changes to the direction will cause inaccurate recognition results.

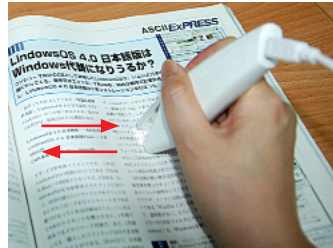
When choosing Traditional Chinese, Simplified Chinese, Japanese or Korean as the language recognition, you can accord to the document you want to scan and your preferred way of holding pen to choose the scan direction manually.

Scanning Horizontal Text

When scanning horizontal text, you can choose the **[Horizontal]** option. Hold the pen scanner firmly, as you would hold a highlighter, while the Pen's tip is at an angle of between 70 and 80 degrees to the page. Align the Scan Tip arrow on your pen to the center of the characters. Then move the pen left-to-right or right-to-left to scan.



Left hand:
Scan from right-to-left or from left-to-right



Right hand:
Scan from left-to-right or from right-to-left

Note: Penpower WorldPenScan series is able to scan and recognize one row of characters at a time. Please place the pen in such a manner so that the Scan Tip arrow is at the center of the line of text.

Scanning Vertical Text

When scanning vertically aligned text, you can choose **[Vertically]** and then select **[Left-hand]** or **[Right-hand]**. To scan the text, please hold the pen firmly as you hold a highlighter, with the pen tip at an angle between 70 to 80 degrees to the page. Align the Scan Tip arrow on your pen to the center of the characters.



Left Hand



Right Hand

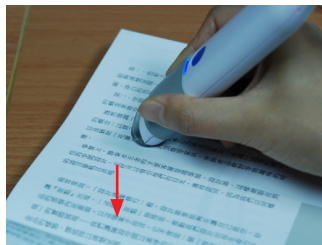
Note: The Left/Right-handed option only available when you select the vertical direction.

Scanning Horizontal Text (WorldPenScan X)

When scanning horizontal text, you can choose the **[Horizontal]** option. Hold the Pen firmly, as you would hold a highlighter, while the Pen's tip is at an angle of between 70 and 80 degrees to the page. Align the Scan Tip arrow on your pen to the center of the characters. Then move the pen up-to-down.



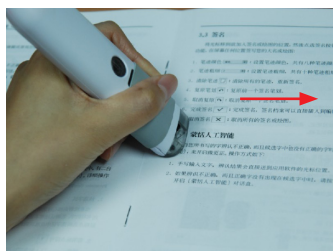
Left Hand



Right Hand

Scanning Vertically Aligned Text (WorldPenScan X)

When scanning vertically aligned text, you can choose **[Vertically]** and then select **[Left-hand]** or **[Right-hand]**. To scan the text, please hold the pen firmly as you hold a highlighter, with the pen tip at an angle between 70 to 80 degrees to the page. Align the Scan Tip arrow on your pen to the center of the characters.



Left hand: Scan from left-to-right

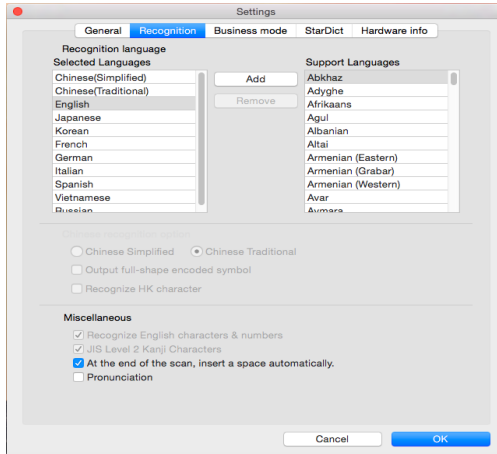


Right hand: Scan from left-to-right

Note: Penpower WorldPenScan series is able to scan and recognize one row of characters at a time. Please place the pen scanner in such a manner so that the Scan Tip arrow is at the center of the line of text.

3.6.2 Recognition Settings

In the [Recog Setting] page, you can set up the recognition results, recognition contents and at the end of scan, insert a space automatically.



Recognition Languages

WorldPenScan series provides lots of recognition languages for you to choose. In the toolbar, you can drag down the recognition menu to select the recognition language you want.

You can modify the recognition language menu in the Recognition Language tab of Setting. In the Recognition Language Tab, the right column contains lots of recognition languages for you to choose. The languages appear in the left column will all appear on the recognition language drag down menu on the tool bar. In this tab, you can select the recognition language in the right column and click [add] to add it into the left column. If you want to remove a language from the left column, you can select the language you want to remove and click [Remove] to remove it from the left column.



Chinese Recognition Option

When choosing Chinese Traditional or Chinese Simplified as the language recognition, you can choose to output the recognized characters in Traditional Chinese or Simplified Chinese. Check the **[Output full-width punctuations]** option to set the punctuation as full-width. When choosing the Chinese Traditional as the language recognition, you can check the **[Recognize HK Character]** to recognize Hongkong characters. If you do not need to recognize Hongkong characters, please do not check it for higher recognition accuracy. You can connect to the <http://www.microsoft.com/hk/hkses/default.aspx> to check the Hong Kong characters list.

Recognize English characters & numbers

You can select **[Recognize English characters & numbers]** to make WorldPenScan recognize English characters and numbers when choosing Traditional Chinese, Simplified Chinese, Japanese or Korean as the language recognition,

JIS Level 2 Kanji Characters

When choosing the Japanese as the language recognition, you can check the **[JIS Level 2 Kanji Characters]** to recognize the JIS level 2 Kanji characters. If you do not need to recognize JIS level 2 Kanji characters, please do not check it for higher recognition accuracy.

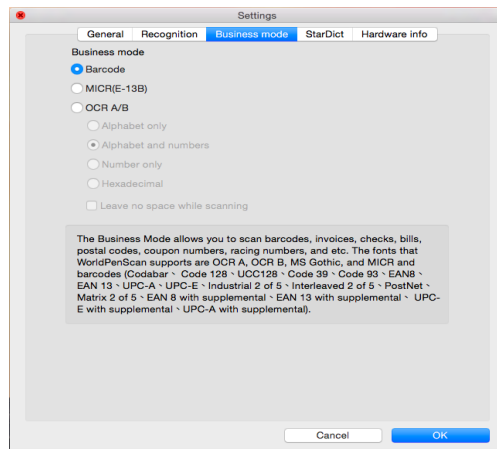
At the End of the Scan, Insert a Space Automatically

When choosing the English, French, German, Italian or Spanish as the language recognition, you can check the **[At the end of the scan, insert a space automatically]**. While scanning text, the system will automatically add a space at the end of the scan.

3.6.3 Business Mode

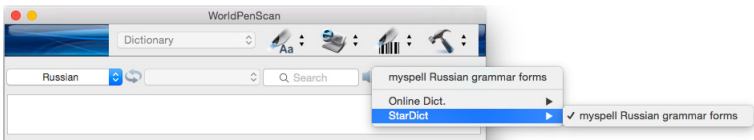
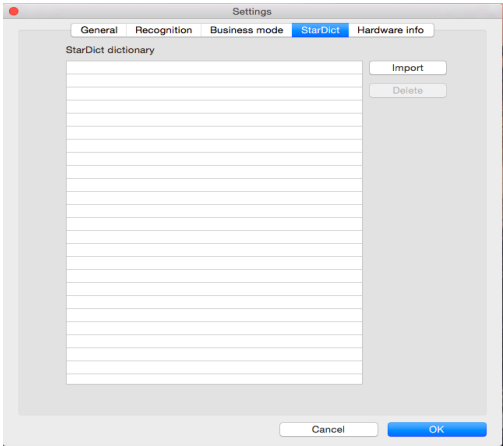
When using the business mode, you can accord with the scan content to choose the scan mode as below for higher recognition accuracy and the font the mode supports will show in the window.

- Barcode: Recognize barcodes.
- MICR (E-13B): Recognize MICR font Text.
- OCR A/B: Recognize OCR A/B font Text. (The options below are only for OCR A/B)
 - Alphabet only: Recognize from A to Z and from a to z.
 - Numbers only: Recognize from 0 to 9.
 - Alphabet & Numbers: Recognize from A to Z, from a to z and from 0 to 9.
 - Hexadecimal: Recognize from A to F, from a to f and from 0 to 9.
 - Leave no space while scanning: Without leaving any space while scanning.



3.6.4 StarDict Dictionary

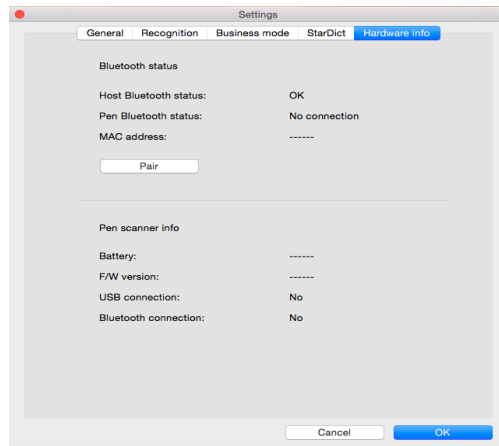
WorldPenScan allows you to import StarDict dictionary files (*.bz2), if you have the dictionary file, please follow the steps below to import, you can find the shared StarDict files on internet, and click the link to download then save the dictionary file into your computer, and click [Import] here to import StarDict dictionary files, and also delete the dictionaries you don't want to use in here.



3.6.5 Hardware Information (For WorldPenScan BT)

In [Hardware info] page, you can view the Bluetooth status and pen status.

- Host Bluetooth status: Show whether the Bluetooth of your computer is turned on or not.
- Pen Bluetooth status: Show the connecting status of pen scanner.
- Pair: Press this button to pair your computer and pen scanner. For more information, please refer to 2.7.
- MAC Address: The address means the identification of the pen scanner.
- Pen status: Show the status of pen scanner, including battery status, F/W version, USB connection status, and Bluetooth connection status.



WorldPenScan Series V4.1 Mac User Manual

Release: March, 2015

PenPower Technology Ltd.