

## Driver Installation

Before starting with the driver installation, please make sure that the tablet is not connected to your PC.

### © Windows Version

1. Insert the Driver CD into your CD drive and wait until the auto start window appears. On Windows Vista and Windows 7 you may confirm the action by pressing [Continue] if the User Access Control window appear.
2. Simply follow the steps on the screen and finish the installation with rebooting your system.

### © Mac Version

1. Insert the Driver CD into your CD drive and wait until the Drive is loaded.
2. Click on the Tablet con and simply follow the steps on the screen and finish the installation with restarting your system.

*Note: You have to remove the exiting pen tablet driver before installing the driver (including the tablet driver with other brands.)*

## Knowing Your Tablet



- 1. USB connector:** Please connect the USB cable here.
- 2. LED indicator:** The LED light on the tablet is the main indicator for hardware operation. This LED normally stays off, and will only turn it on or off in response to various conditions.  
  
If the LED of tablet is blinking continuously, it means that the USB port of your PC has a bad connection or power is not stable. Please re-plug in your USB/dongle again. If still not working, please change to another USB port.

**3. Express keys & Ring switch:** For Express Keys & Scroll Ring settings, you can modify from the Express Keys configuration page.

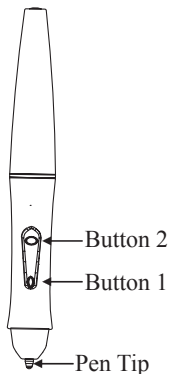
### ☉ **Re-define Express keys**

Select “Common”, “Mouse”, “Multimedia”, “Other”, “Run”, “Internet” and “Hot Key” tabs to re-define the settings, you can resume the Express Keys to the default settings by clicking “Default” button.

**4. Working area:** The area for you to draw.

## Knowing Your Pen

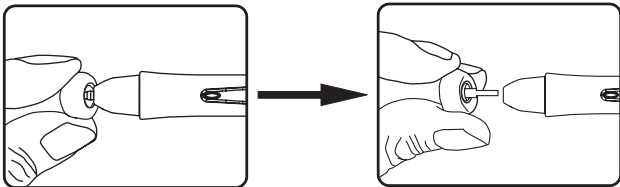
The pen of TOOYA Master Tablet is the connection between your hand and the graphic tablet. Just use and hold the pen like a normal pen. If you move over the tablet in max 10mm distance without touching it you can see the movement of the pointer. The pen tip is like left mouse buttons which also offer double click function. Further, the pen offers two buttons which can be programmed in Control Panel.



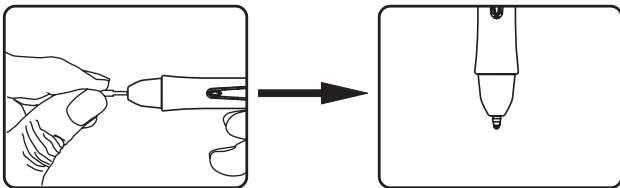
## ◎ How to change the pen tip

If the tip is not soft any more or leaves scratches (scratch noise) on the graphic tablet it's recommend to exchange the tip to avoid any damage on your tablet.

1. Use the pen tip remover tool like a classical tool you know from home. Grap the tip with the open end of the remover tool and pull out the tip with care.




2. Place the new tip in the pen and gently push it in until the end is reached. Don't use too much pressure to avoid damage of the pen.



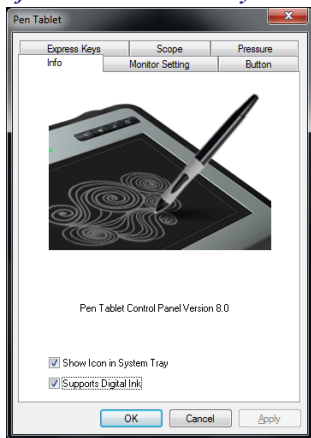
## Control Panel

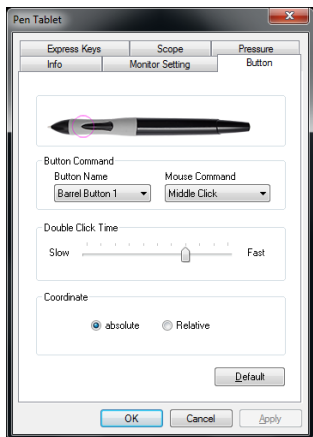
This paragraph describes the Windows control panel but can be adopted to Mac control panel as well.

After driver installation, restart and successful connection of your Graphic tablet you will find a small Tablet Icon  in the quick start bar close to your clock. Click on the Icon to open the Control Panel. The Control Panel is divided into 2 main parts

1. **Info:** The Info tab displays the version number of the driver and Tablet PC function. You can select the tablet PC function of the Pressure Sensitive by tick the box of Support Tablet PC Feature.

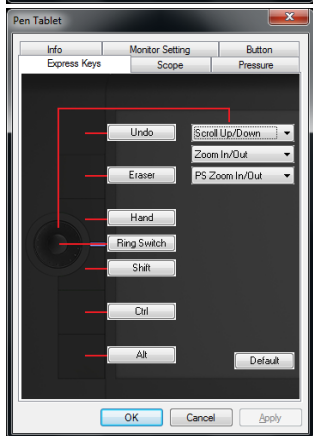
*Note: No Tablet PC feature under the Mac System.*



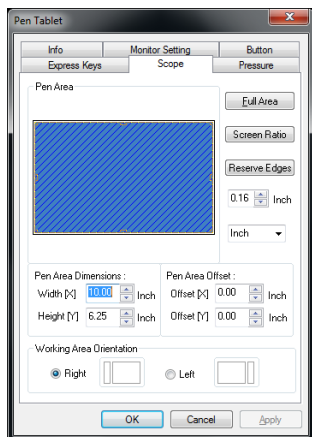


2. **Button:** You may re-program the functions of the pen tip and the two-barrel buttons by selecting the button's name. According to the mouse function, you can select no action, left click, left double click, middle click, middle double click, right click, or right double click.

*Note: Mac system has no middle click and middle double click.*

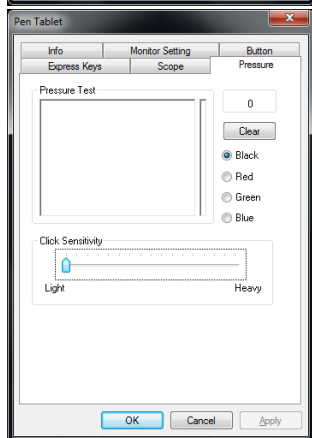


3. **Express Keys:** For the models with express keys or scroll ring, you can change the express key settings from the Express Keys Configure Page.



#### 4. Scope:

- I. Full Area: Select the largest possibly working area.
- II. Screen Ratio: Set the tablet area as same as the screen size by reducing either the current width or height of the Pen area.
- III. Reserve Edges: Allocate the space for the tablet's hot cells.



5. **Pressure Test:** There are four different colors for selecting and the pressure sensitivity of the pen can be adjusted in this tab. There is a test area to see the thickness of a line at a certain pressure of the pen tip of the pad.

*Note: The similar function are also working on different Windows and Mac OS.*

**Thank you for purchasing PenPower product.**

Please register your product on [www.penpower.net/reg.html](http://www.penpower.net/reg.html) to ensure warranty service:

- **1 Year Warranty**
- **Software Updates**
- **Technical Support**

Note:

- The warranty period begins on the purchase date, standard warranty period ends 12 months after the purchase date.
- Product warranty is limited to the origin of purchase. Users might pay a service fee when requesting warranty service in different country.
- A copy of the official invoice must be submitted as proof of purchase for warranty service.





PenPower

# Warranty Card

Product Name: \_\_\_\_\_

Purchase Date: \_\_\_\_\_

Dealers Signature

## PenPower Technology Ltd.

Global Operations:	USA	+1-510-897-6600	Taiwan	+886-2-2778-1922
	Singapore	+65-6342-0566	Beijing	+86-10-8287-3871
	Hong Kong	+852-2111-1548	Guangzhou	+86-20-8776-2205

[www.penpower.net](http://www.penpower.net)