



Driver Installation

In Windows environment, you may start using Digital Tablet Device after you insert USB Connector of Digital Tablet into an available USB port. Driver Software need not be installed to control cursor position with either device. However, if you want to use all the function quipped in the pen's device, you have to install Driver Software. Before the installation, make sure the Digital Tablet had been connected with your PC or Mac.

⦿ Windows Version

1. Insert the Driver CD into your CD drive and wait until the auto start window appears. Or open [My Computer] / [CD-ROM], and double click [Setup.exe].
2. Simply follow the steps on the screen and finish the installation with restarting your computer.

⦿ Mac Version

1. Insert the Driver CD into your CD drive and wait until the installation window appears. Or click on [Go] / [Computer] / [CD-ROM] / [ Pen Tablet].
2. Then click on the Tablet Icon [ Pen Tablet] and simply follow the steps on the screen and finish the installation with restarting your computer.

Note: If you don't have CD-ROM drive, or you lost your CD-ROM disc, please go to PenPower's website (<http://www.penpower.net>) and choose your country/region site to download the software.

Knowing Your Pen

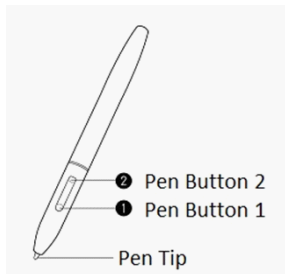
The Digital Pen of TOOYA Fun Tablet allows you to unleash your imagination on the graphic tablet. Just use and hold the pen like a normal pen. If you move over the tablet in max 7mm distance without touching it you can see the movement of the pointer. The pen tip is like left mouse buttons which also offer double click function. Further, the pen offers two buttons which can be programmed in Control Panel.

☉How to change the battery of Digital Pen:

1. Twist the pen's body into two parts
2. Point the battery's negative level downward and put it into the battery container.
3. Twist the pen's two parts together tightly.



Digital Pen functions as a three-button mouse, with a left button (Pen Tip), a right button (Pen Button 1), and a middle button (Pen Button 2). These parts are shown below.



Note: Always tap Digital Pen before using it. This “wakes up” the pen, which goes to “sleep” to conserve battery power after several minutes of non-use.

⦿How to change Digital Pen Tip:

After a time it's necessary to exchange the pen tip. If the tip is not soft any more or leaves scratches (scratch noise) on the graphic tablet, it's recommended to exchange the tip to avoid any damage on your tablet.

1. Grasp the tip by the open end of the remover tool and pull out the tip with care.
2. Place the new tip in the pen and push it in until the end is reached. To avoid damaging the pen, don't use too much force to push the pen tip.

Knowing your Tablet


The following diagram shows the parts of Digital Tablet:

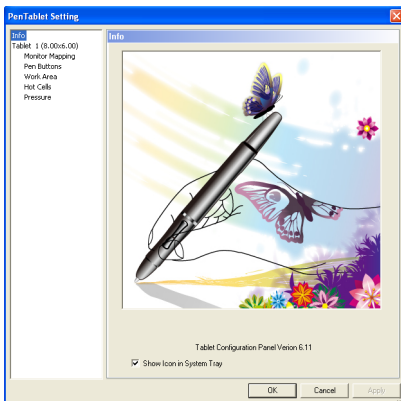


1. **USB Port:** The product equips USB cable.
2. **Work Area:** Work Area is the active area where Digital Pen responses. The usage is different to mouse usage. Work Area is equal with your monitor, you can directly point on the place you like to move the mouse to. If you move the pen to left bottom corner, the pointer on your display will directly go to this point. This makes work much more efficient and much quicker than using a mouse.
3. **Hot Cell:** Hot Cells are the functions that can be programmed to common uses, which include visiting a web site, opening a music file, starting a word processor and so on. You can name the hot cells that are defined by yourself. Once the hot cell has been defined, every time you press it, the device will immediately execute your defined function.

4. LED Indicator: Right after you connect the tablet to the computer, LED Indicator will blink quickly for a short period. When the blinking stops, this indicates that Digital Tablet has started up normally and is ready to serve you. When you hover Digital Pen over the active area, LED Indicator will blink slowly. This indicates that the tablet detects the pen.

Tablet Configuration Panel

Please open the computer's [Control Panel], or click on the small Tablet Icon  to enter Tablet Configuration Panel. As for Mac version, please click on [Go] / [Application] / [Pen Tablet Setting] / [Tablet Setting].

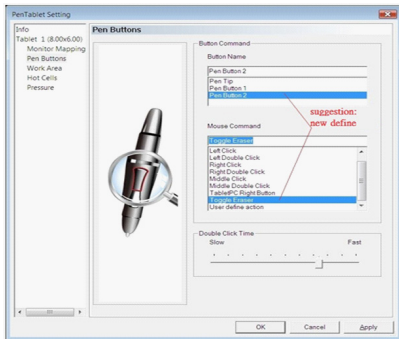


Tablet Configuration Panel displays Active Area size, version number of the current Tablet Configuration Panel, and all configuration options of Digital Tablet.

- a. Tablet 1 (8.00×6.00) – displays width and height of Active Area in inches and set up for Left-handed User.
- b. Monitor Mapping – tap to map Active Area to correspond with a monitor screen or two.
- c. Pen Buttons – tap to customize the functions of Pen Buttons.
- d. Work Area – tap to adjust the size and position of Work Area and correspond it with screen ratio.
- e. Hot Cells – tap to define the functions of Hot Cells.
- f. Pressure – tap to customize and test the pressure sensitivity feature.

Note: In the Mac version of Tablet Configuration Panel, the setting for left-handed User is at Work Area.

○Configuring Pen Buttons



1. Select a button you want to set in Button Name area.
2. Correspond the button with certain Mouse Command, the specified button will perform the designated mouse command.
3. Move the slider bar in Double Click Time Area toward “Slow” can allow more time for tapping the second time after the first.
4. If Pen Button is defined as the “Eraser Toggle”, pressing the button will toggle the functions of Pen Tip and Eraser together. The icon corresponding to Pen Tablet in the lower right of the screen would indicate the changing of eraser function. Pressing the button again will change the function back to Pen Tip.

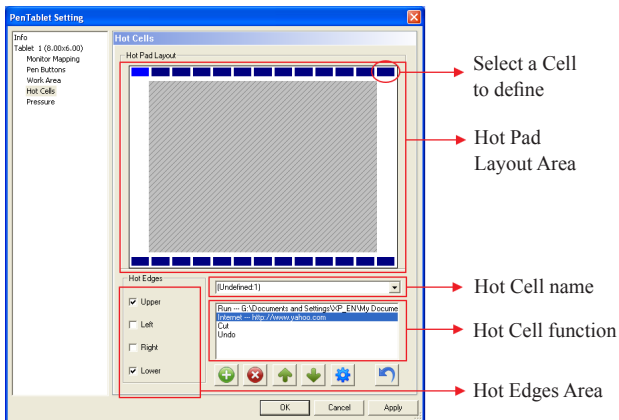
Note:

- 1. Pen Tip may only be defined to function as the left mouse button.*
- 2. Mac version doesn't provide the setting of Double Click Time.*


3. When the User of Mac defines Pen Button as “Eraser Toggle”, the screen will not show the icon while changing the function of pen tip to eraser, but the eraser function can still be applied in Graphic Software.

⦿Configuring Hot Cells

Hot Cells are the small icons on the edges of Work Area on Digital Tablet. When you tap on one of these keys, a pre-defined function will be executed, if one is defined. You may define these functions as you wish, such as visiting a web site, starting a word processor, playing a video clip, and so on.



1. First select a Hot Cell in Hot Pad Layout Area, and then tap the green plus button (). At this point, Hot Cell Function Panel will pop up.

2. Select [Run] to define a program to be executed. For example, to specify a video clip to be played upon tapping a certain Hot Cell. First, select the video playing program, and type in [Start in] the directory where the video is located, and then type the name of the video clip in [Parameters].
3. Select [Internet] to specify a web site to be visited or another Internet service.
4. Select [Hot Cell] to specify a combination of cells (Hot Cell Combination) to invoke the function.
5. If you want to delete the function of certain Hot Cell, select it and tap the red button .

Note: In Mac version, Hot Cell Function Panel offer more setting options: [System] and [Roller].

● Testing and Configuring Pressure Sensitivity

When you draw on the Digital Tablet with your Digital Pen, the pressure area will show the trace of your drawing action, which vary as you press the pen tip with varying force against the tablet's surface. Moving the Slide Bar toward “Light” means a slight tap with the pen tip would cause a “click” to be registered, making the pen feel “lighter.” Try and adjust the Pen Tip sensitivity to your liking.

Note: There is no Click Sensitivity Area in Mac version of Testing and Configuring Pressure Sensitivity Panel.