

WorldPenScan

User Manual

Version: V2.2 Mac (tw)
Release: November, 2011

Penpower Technology Ltd.

Software User License Agreement

You are licensed to legally use this software program (“the Software”) by Penpower Technology Ltd (“Penpower”) under this license agreement (“The Agreement”). If you do not agree with any of the provisions in this Agreement, please do not install, copy or use the Software. By using the Software, you are deemed to fully understand and accept the provisions of this Agreement.

1. Intellectual Property

All intellectual property rights in the Software, together with all information and documents included in the packaging for the Software (including but not limited to copyrights), are property of Penpower, and are protected by relevant laws and regulations.

2. License to Use

You are authorized to use the Software on one (1) single computer only. You may not use the Software on any other machines other than the said single computer.

3. Authority to Copy

The Software and all documents included with the Software, and copyright thereof, are property of Penpower. You are licensed to make one (1) copy of the Software for your personal backup purposes. All other acts of copying are strictly prohibited.

You may not sell, lease, disassemble, reverse engineer, copy, translate, adapt or derive the Software, or obtain the source code of the Software by any other means. You may not use the Software for any purposes other than those permitted under this Agreement.

4. Business Users

If you need to install or use the Software on more than one (1) computer, please contact Penpower or our local distributor to purchase a license for the additional use.

5. Liability

You agree to indemnify Penpower against all losses, costs, debts, settlement payments or other expenses (including but not limited to attorneys fees) arising from your breach of this Agreement, and you agree to compensate Penpower for all of the abovementioned damages.

6. No Warranty

Effectiveness of a packaged software in handling information is closely related to its software and hardware environment. The Software is published following careful development and product testing by Penpower, but Penpower is not able to conduct tests based on all possible combinations of software and hardware environment. Therefore, Penpower is unable to promise nor warrant that there will be absolutely no risk of loss or damage of information, or any other kind of loss, during installation and/or execution of the Software. You must be fully aware of your risks in using the Software.

Penpower will provide you with the Software and support services in respect of the Software to the maximum extent permitted by law. However, Penpower does not warrant that the Software and information included in the package of the Software contain no defects or errors. Penpower is not liable for any indirect, special or incidental loss arising from the Software, including but not limited to loss of profits, damage to business reputation, cessation of work, hardware malfunction or damage, or any other commercial damage or loss arising from commercial use of the Software.

7. Limitation of Liability and Damages

The maximum amount of compensation payable by Penpower, in respect of any damage incurred by you for any reason under this Agreement, is limited to the amount you have already paid to Penpower in respect of the Software.

Under no circumstances will Penpower be held liable for the possibility of loss, notwithstanding Penpower may be aware of the possibility of such loss.

8. Prohibition Against Sublicense

You are prohibited to assign the license in respect of the Software granted to you under this Agreement, or to grant a sublicense to another person.

9. Jurisdiction

With regards to any disputes arising from this Agreement, Penpower and you agree that the court having jurisdiction over the business location of Penpower will be the court in the first instance.

10. Miscellaneous

In the event that any provision of this Agreement is found to be invalid at law, such invalidity will not affect the validity of any other provisions, or the legal enforceability of such other provisions.

In the event that the Software cannot be executed under conditions of normal use, due to any damage to the original disk/s, Penpower will replace the disk/s free of charge.

Contents

Chapter 1 Product Introduction	1-1
1.1 Introduction.....	1-1
1.2 Features.....	1-1
Chapter 2 Getting Started	2-1
2.1 System Requirements.....	2-1
2.2 Hardware Specification.....	2-1
2.3 Software Installation.....	2-2
2.4 Launching WorldPenScan.....	2-4
2.5 Registration.....	2-4
2.6 Scanning Guide.....	2-4
Chapter 3 Scanning and Settings	3-1
3.1 WorldPenScan Toolbar.....	3-1
3.2 Scan Mode.....	3-2
3.2.1 Sentence Scan.....	3-2
3.2.2 Word Scan.....	3-2
3.2.3 Image Scan.....	3-3
3.2.4 Business Mode.....	3-4
3.3 Online Translation.....	3-5
3.4 Original Image.....	3-6
3.5 Settings.....	3-7
3.5.1 General Settings.....	3-7
3.5.2 Recognition Settings.....	3-9
3.5.3 Recognition Language Settings.....	3-10
3.5.4 Button Configuration Settings.....	3-11
3.5.5 Online Translation Settings.....	3-11

There may be newer versions of the software that was released during or after this product's manufacturing date. If the content in the User Manual differs from the on-screen interface, please follow the instructions on the on-screen interface instead of the User Manual.

Chapter 1 Product Introduction

1.1 Introduction

WorldPenScan , the best input device, scans and recognizes 191 languages such as Chinese , English, Japanese, Korean, French, German, Italian into your computer via the USB interface. Whenever you come across any particular words or sentences that you do not understand, WorldPenScan will scan for you.

With an ergonomic design, WorldPenScan provides a comfortable handle which fits all left and right-handed users. Scan away effortlessly with the transparent scan tip. Where you see, where you scan.

1.2 Features

- **The Best Input Device**

Unlike the complicated process of the traditional scanner, WorldPenScan provides the easiest way for inputting words. Multi-thread architecture allows you to scan continuously without pause while recognition is being done on the fly.

- **Multiple Language Recognition System**

The adjustable multiple language recognition system provides Traditional Chinese, Simplified Chinese, Hong Kong characters, English, Japanese, Korean, French, German, Italian and Spanish recognition languages.

- **Automatic Tilt Calibration**

Auto-detect and calibrate the tilt angle of the scanned pictures to improve the recognition accuracy.

- **Online Translation**

The manageable online translation menu is attached on the toolbar. You can set up the translation website for translating instantly.

- **A Brand New Ergonomic Design**

Provide a comfortable handle which fits all left and right-handed users. Scan away effortlessly with its transparent scan tip. Where you see, where you scan. The stand alone USB cable can prevent cable damage and connection problems.

- **Scan Image**

The new feature of scanning images lets you scan and save the important images into MS Word files.



- **Support OCR-A/B banking fonts**

The business mode supports the recognition of barcodes and fonts such as OCR-A/B, and MICR fonts. With the business mode, you can scan and recognize barcodes and numbers or characters on invoices, checks, bills, coupons, and ect.

Chapter 2 Getting Started

2.1 System Requirements

- Intel based Mac
- Mac OS X 10.5 version or later version
- USB port

2.2 Hardware Specification

- Dimensions: 130mm x 37mm x 18.5mm
- Weight: 30g (excluding USB Adapter)
- Interface: USB 2.0
- Scanning speed: 15 cm/sec.
- Character size: 5~22 pt



Function button:

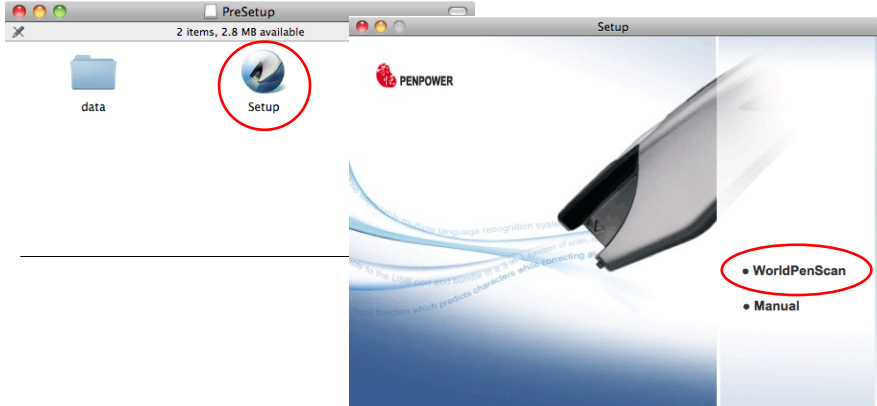
While scanning text or images, clicking the function button will function as the **[Enter]** key on the keyboard. In the **[Word Scan]** mode, the function key can be used to send the next word.

Tip: You can refer Section 3.6.4 to configure the function button as Enter, Tab, Space, Click, or Double click.

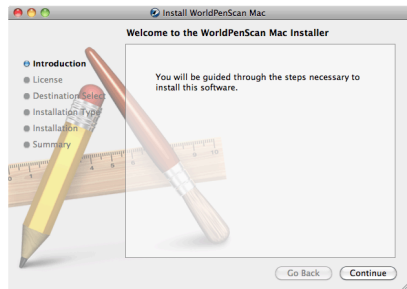


2.3 Software Installation

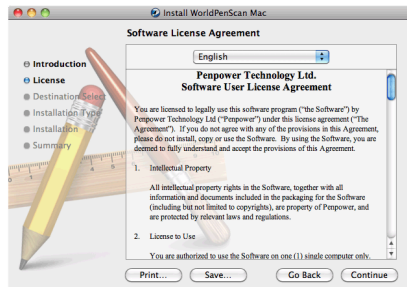
1. Insert the **WorldPenScan** setup CD into the CD-ROM drive. Run the **Setup** and click **[WorldPenScan]** on the Installation window to install **WorldPenScan**.



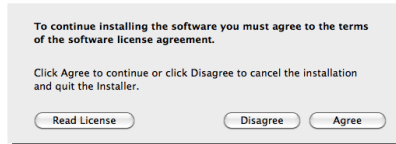
2. Please click **[Continue]** to install.



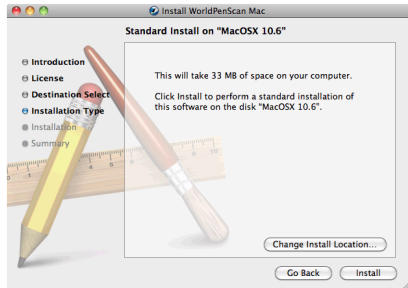
3. Please read the License Agreement, and click **[Continue]**.



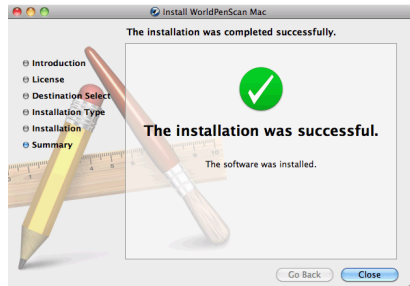
- Click **[Agree]** to accept the license agreement.



- Confirm the installation location and click **[Install]** to continue.



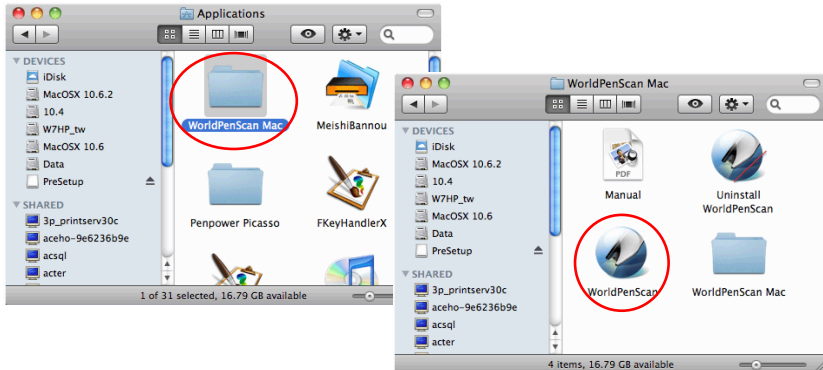
- Click **[Close]** to finish the installation process.





2.4 Launching WorldPenScan

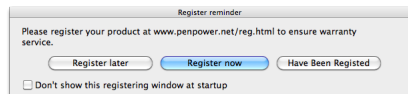
Run [Go/Applications/WorldPenScan Mac/WorldPenScan] to launch WorldPenScan.



2.5 Registration

When you first time run the **WorldPenScan**, a registration reminder will appear. Please click on **[Register now]** to register and ensure the warranty service. You can also click **[Register later]** to close the reminder. When you need to register, click the **[Tools]** button and select **[About]** from the toolbar and then click on **[Register]**. If you have registered, please tap [Have Been Registered].

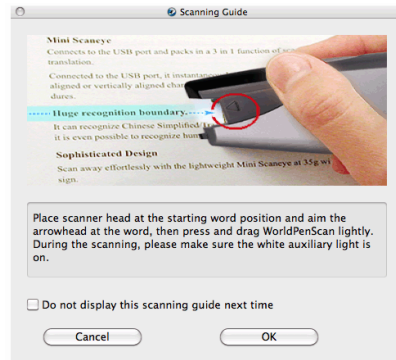
Tip: If you do not need to be reminded again, you can check [Don't show this page at startup].



2.6 Scanning Guide

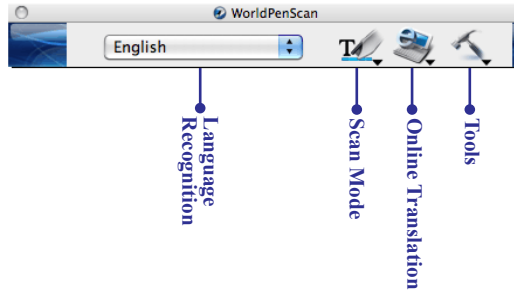
A **Scanning Guide** will appear after the registration reminder. Use the **WorldPenScan** as the guide directs.

Note: If you would not like to read the message again, you can check [Do not display this scanning guide next time], and click [OK].



Chapter 3 Scanning and Settings








3.1 WorldPenScan Toolbar



1. **Language Recognition: WorldPenScan** can recognize Chinese(Simplified), Chinese (Traditional), English, French, German, Italian, Japanese, Korean and Spanish text. Click up and down button and select the language you would like to scan.



Note: *The Language Recognition must match the language of the content for optimal accuracy.*


2. **Scan Mode:** Provide [Sentence Scan]  and [Word Scan]  modes.
 - **Sentence Scan** : [Sentence Scan]  mode is the default scan mode for scanning an article or a sentence directly. The scanned article or sentence will be recognized into text and sent to your computer. Please refer to 3.2.1 Sentence Scan for detailed information.
 - **Word Scan** : When you want to scan a word or check the meaning or translation of one word, you can click the [Scan Mode] button to select [Word Scan]  mode, and scan a word or a sentence, and then select a word to input or check the meaning or translation. Please refer to 3.2.2 Word Scan for detailed information.
3. **Online Translation** : Provide a translation function in which you can assign a translation website to translate the scanned words. Please refer to 3.3 Online Translation for detailed information.
4. **Tools:** Provide Image Scan, Business Mode, Original Image, Settings, Help and About.



- . **Image Scan:** Select the [Image Scan] option, the scanned image or word will be sent to your cursor location in image format. Please refer to 3.2.3 Image Scan for detailed information.
- . **Original Image:** Display the scanned image. See 3.4 Displaying Original Image.
- . **Settings:** Provide General, Recognition Setting and Online Translation settings. See 3.5 Settings for detailed information.


3.2 Scan Mode

3.2.1 Sentence Scan

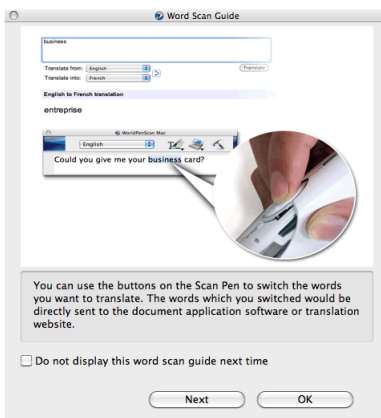
1. Select the [Sentence Scan]  mode from the [Scan Mode].
2. Select the language of the text that you desire to scan from the [Language Recognition].
3. Open any word processor, for example Text Edit, and then click the cursor location where you want to input.
4. Place a document on a flat surface and place the scan tip at the front of your desired scan area. Aim the Scan Tip arrow at the center of the desired scan area, and then press and drag the **WorldPenScan** pen in a straight line across the area like a highlighter. During the scanning, please make sure the white auxiliary light is on.
5. Stop applying pressure to the pen to stop scanning. The text that the pen has scanned are displayed in your word processor immediately.


Note: Penpower WorldPenScan is able to scan and recognize one row of characters at a time. Please place the Scan Tip arrow at the center of the line.

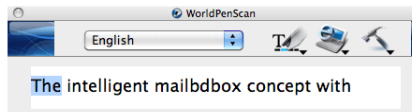
3.2.2 Word Scan

1. Click the [Scan Mode] button to select the [Word Scan]  mode, an extension window will appear under the toolbar.


Tip: When first time switching to the Word Scan mode, the Word Scan Guide window will appear to guide you how to use the Word Scan mode.



2. Select the language of the text that you desire to scan from the **[Language Recognition]**.
3. Open any word processor, for example Text Edit or click the **[Online Translation]**  button to open a translation website. And then click the location where you want input.
4. Place a document on a flat surface and place the scan tip in front of the word you desire to check. Aim the arrow at the desired word, then press and drag the **WorldPenScan** pen in a straight line across the word. During the scanning, please make sure the white auxiliary light is on.
5. Stop applying pressure to the pen to stop scanning. The first recognizable word will be sent to the desired word processor or translation website. The meaning or translation will be displayed in the translation website as well.
6. If you scan more than one word, you can press the **[Function Button]** on the **WorldPenScan** pen to choose next recognizable word or use your mouse to highlight a word from the extension window, the selected word will be sent to the **cursor location**. So you can literally check the meaning or translation of your choice.





3.2.3 Image Scan

1. Click **[Tools]**  button and select the **[Image Scan]** option from the drop-down menu.
2. Open a word processor that is able to input images, for example Text Edit. Click the location where you want to input the scanned images.
3. Place a document on the a flat surface and place the scan tip at the starting word or picture and aim the Scan Tip arrow at the center of the scan area, then press and drag the scan pen in a straight line. The white auxiliary light from the Scan Tip indicates the pen is scanning.
4. Stop applying pressure to the pen to stop scanning. The scanned image will be displayed in your word processor immediately.



3.3 Online Translation

WorldPenScan provides [**Online Translation**]  function for you to translate words or sentences.

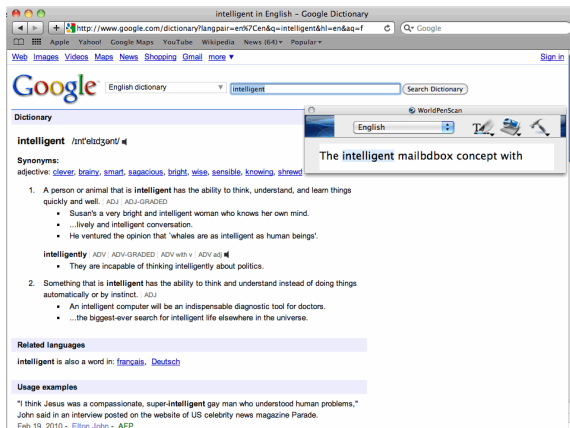
1. Select the [**Language Recognition**] which matches the scanning words.
2. Click the [**Online Translation**]  and then select the any online translation Website. The online translation Website will be opened, and **WorldPenScan** will be switched to the [**Word Scan**]  mode automatically.

Tip: You can organize Website Links from the Translation Settings function. Please refer to 3.4.3 Online Translation Settings for detailed information.

3. Place a document on a flat surface and place the scan tip at the starting word. Aim the scan tip arrow at the center of the desired area, the press and drag the scan pen in a straight line. The white auxiliary light from the Scan Tip indicates the pen is scanning.
4. The translation result of the first recognized word displays in the Website.

Note: If the Website does not support the enter function, please manually click the translate button on the website with your mouse.


5. If you scan more than one word, you can press the [**Function button**] on the scan pen to see the translation of the next recognizable word. You can also use your mouse to highlight a word from the extension window, the selected word will be sent to the cursor location for translating.



intelligent in English - Google Dictionary

http://www.google.com/dictionary/langpair=en0?C=en&q=intelligent&I=en&aq=f


Google English dictionary intelligent Search Dictionary

Dictionary /ɪntelɪdʒənt/  WorldPenScan

Synonyms: adjective: clever, brainy, smart, sagacious, bright, wise, sensible, knowing, shrewd

1. A person or animal that is intelligent has the ability to think, understand, and learn things quickly and well. ADJ ADJ-GRADED

- Susan's a very bright and intelligent woman who knows her own mind.
- ...lively and intelligent conversation.
- He ventured the opinion that 'whales are as intelligent as human beings'.

intelligently ADV ADJ-GRADED ADV with v ADV adj 

- They are incapable of thinking intelligently about politics.

2. Something that is intelligent has the ability to think and understand instead of doing things automatically or by instinct. ADJ


- An intelligent computer will be an indispensable diagnostic tool for doctors.
- ...the biggest-ever search for intelligent life elsewhere in the universe.

Related languages

intelligent is also a word in: [français](#), [Deutsch](#)


Usage examples

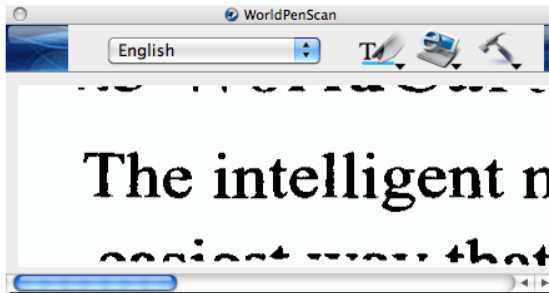
"I think Jesus was a compassionate, super-intelligent pay man who understood human problems," John said in an interview posted on the website of US celebrity news magazine Parade. Feb 19, 2010 - [Elton John](#) - [AEP](#)

The intelligent mailbox concept with 




3.4 Original Image

Click [Tools]  button and select the [Original Image] option from the drop-down menu to open the [Original Image] window. After scanning, the [Original Image] window displays the scanned image. You can check the scanned image to compare with the original text. This can help you improving your scan technique for more accurate recognition results.



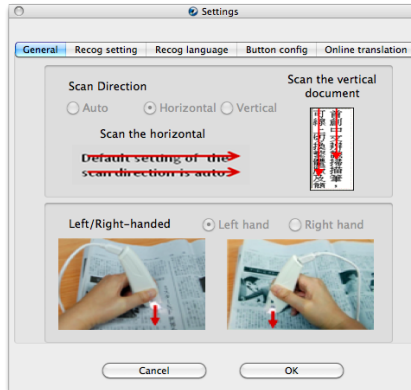
Tip: You can click on the original image to save the image file.

3.5 Settings

Click [Tools]  from the toolbar and select [Settings] from the drop-down menu to set up the general, recognition and online translation settings.

3.5.1 General Settings

In the [General] setting page, you can set up the scan direction and left/right-handed.



Scan Direction

WorldPenScan must be used to scan the characters in consistent direction, any changes to the direction will cause inaccurate recognition results.

When choosing Chinese(Traditional), Chinese(Simplified), Japanese or Korean as the language recognition, you can accord to the document you want to scan to choose the scan direction manually.



Scanning Horizontal Text

When scanning horizontal text, you can choose the [**Horizontal**] option. Hold the Pen firmly, as you would hold a highlighter, while the Pen's tip is at an angle of between 70 and 80 degrees to the page. Align the Scan Tip arrow on your pen to the center of the characters. Then move the pen left-to-right or right-to-left to scan.



Left hand:
Scan from right-to-left or from left-to-right



Right hand:
Scan from left-to-right or from right-to-left

Note: Penpower WorldPenScan is able to scan and recognize one row of characters at a time. Please place the pen in such a manner so that the Scan Tip arrow is at the center of the line of text.

Scanning Vertical Text

When scanning vertically aligned text, you can choose [**Vertically**] and then select [**Left-hand**] or [**Right-hand**]. To scan the text, please hold the pen firmly as you hold a highlighter, with the pen tip at an angle between 70 to 80 degrees to the page. Align the Scan Tip arrow on your pen to the center of the characters.



Left Hand



Right Hand

Note: The Left/Right-handed option only available when you select the vertical direction.

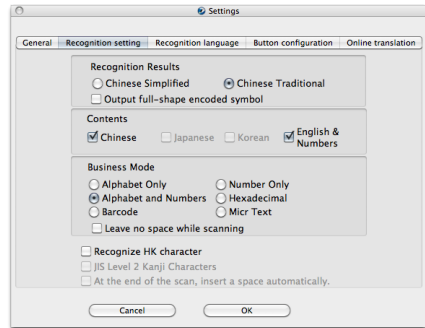
3.5.2 Recognition Settings

In the [Recog Setting] page, you can set up the recognition results, recognition contents and at the end of scan, insert a space automatically.

Recog Results

When choosing Chinese(Traditional) or Chinese(Simplified) as the language recognition, you can choose to output the recognized characters in Chinese Traditional or Chinese Simplified.

If you prefer the output results of punctuations are full width, please check this option [Output shape encoded symbol].



Business Mode

If your device is WorldPenScan Pro, you can set the recognition result of the Business Mode as Alphabet Only, Alphabet and Numbers, Bar Code, Number Only, Hexadecimal, Micr Text. Moreover, you can check **Leave no space while scanning** if you don't want spaces inserted while scanning.

Contents

When choosing Chinese(Traditional), Chinese(Simplified), Japanese or Korean as the language recognition, you can choose to recognize the characters in Chinese/Japanese/Korean or English & Numbers.

For example, when the document you want to scan does not contain English & Numerics, you may only check Chinese, Japanese or Korean for higher recognition accuracy.

Recognize HK Character

When choosing Chinese(Traditional) as the language recognition, you can check the [Recognize HK Character] to recognize Hongkong characters. If you do not need to recognize Hongkong characters, please do not check it for higher recognition accuracy.

JIS Level 2 Kanji Characters

When choosing Japanese as the language recognition, you can check the [JIS Level 2 Kanji Characters] to recognize the JIS level 2 Kanji characters. If you do not need to recognize JIS level 2 Kanji characters, please do not check it for higher recognition accuracy.

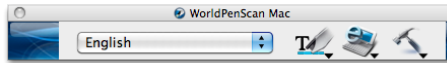
At the End of the Scan, Insert a Space Automatically

When choosing English, French, German, Italian or Spanish as the language recognition, you can check the [At the end of the scan, insert a space automatically]. While scanning text, the system will automatically add a space at the end of the scan.



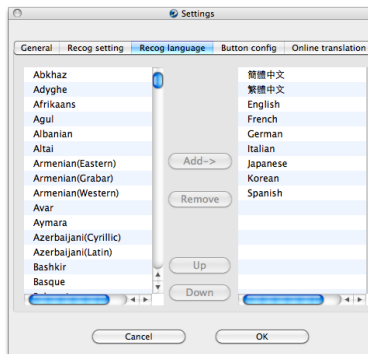
3.5.3 Recognition Language Settings

WorldPenScan provides 191 recognition languages for you to choose. In the toolbar, you can drag down the recognition menu to select the recognition language you want.



You can modify the recognition language menu in the Recognition Language tab of Setting. In the Recognition Language Tab, the left column contains 191 recognition languages for you to choose. The languages appear in the right column will all appear on the recognition language drag down menu on the tool bar.

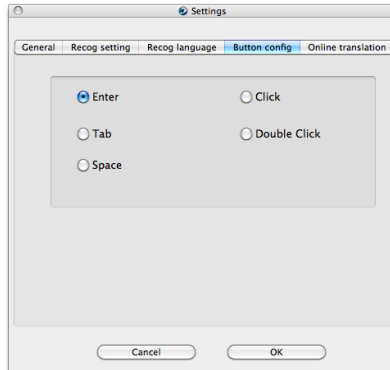
In this tab, you can select the recognition language in the left column and click [Add] add it into the right column. If you want to remove a language from the right column, you can select the language you want to remove and click [Remove] to remove it from the right column.



Tip: Select a language in the right column and click [Up] or [Down]. You can change this language's order.

3.5.4 Button Configuration Settings

The default function of Function Button is Enter. You can replace Enter by Tab, Space, Click, or Double Click. Select the Button Configuration tab and then you can select which function you want the Function Button to be.

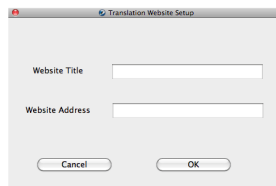
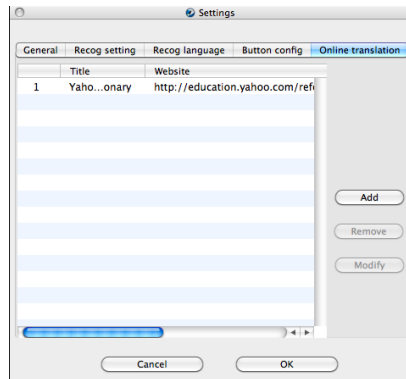


3.5.5 Online Translation Settings

In the [Online Translation] setting page, you can add, remove, and modify online translation websites. The websites will be shown under the [Online Translation] button on the toolbar.

Click the [Add] button to open the Translation Website Setup window. Input the translation website name and its URL address, then click [OK]. You can also modify or remove a website by clicking the [Modify] button or the [Remove] button.

You will find the changes when clicking [Online Translation] button from the toolbar.





Appendix: Recognition Languages

Abkhaz

Adyghe

Afrikaans

Agul

Albanian

Altai

Armenian (Eastern)

Armenian (Grabar)

Armenian (Western)

Avar

Aymara

Azerbaijani (Cyrillic)

Azerbaijani (Latin)

Bashkir

Basque

Belarusian

Bemba

Blackfoot

Breton

Bugotu

Bulgarian

Buryat

Catalan

Cebuano

Chamorro

Chechen

Chinese (Simplified)

Chinese (Traditional)

Chukchee

Chuvash

Corsican

Crimean Tatar
Croatian
Crow
Czech
Dakota (Sioux)
Danish
Dargwa
Dungan
Dutch (Belgium)
Dutch (Netherlands)
English
Eskimo (Cyrillic)
Eskimo (Latin)
Estonian
Even
Evenki
Faroese
Fijian
Finnish
French
Frisian
Friulian
Gagauz
Galician
Ganda
German
German (Luxembourg)
German (new spelling)
Greek
Guarani
Hani
Hausa
Hawaiian

Hungarian
Icelandic
Indonesian
Ingush
Irish
Italian
Japanese
Jingpo
Kabardian
Kalmyk
Karachay-balkar
Karakalpak
Kasub
Kawa
Kazakh
Khakass
Khanty
Kikuyu
Kirghiz
Kongo
Korean
Koryak
Kpelle
Kumyk
Kurdish
Lak
Latin
Latvian
Lezgi
Lithuanian
Luba
Macedonian
Malagasy

Malay (Malaysian)
Malinke
Maltese
Mansi
Maori
Mari
Maya
Miao
Minangkabau
Mohawk
Moldavian
Mongol
Mordvin
Nahuatl
Nenets
Nivkh
Nogay
Norwegian (Bokmal)
Norwegian (Nynorsk)
Nyanja
Ojibway
OldEnglish
OldFrench
OldGerman
OldItalian
OldSpanish
Ossetian
Papiamento
Polish
Portuguese (Brazil)
Portuguese (Portugal)
Provençal
Quechua

Rhaeto-Romanic
Romanian
Romany
Rundi
Russian
Russian (Old Spelling)
Rwanda
Sami (Lappish)
Samoan
Scottish Gaelic
Selkup
Serbian (Cyrillic)
Serbian (Latin)
Shona
Slovak
Slovenian
Somali
Sorbian
Sotho
Spanish
Sunda
Swahili
Swazi
Swedish
Tabasaran
Tagalog
Tahitian
Tajik
Tatar
Tok Pisin
Tongan
Tswana
Tun

Turkish
Turkmen
Tuvinian
Udmurt
Uigur (Cyrillic)
Uigur (Latin)
Ukrainian
Uzbek (Cyrillic)
Uzbek (Latin)
Welsh
Wolof
Xhosa
Yakut
Zapotec
Zulu
Esperanto
Ido
Interlingua
Occidental
Arabic numbers
Arabic-Indian numbers
Basic
C/C++
COBOL
Fortran
JAVA
Pascal
Simple chemical formulas

WorldPenScan V2.2 Mac (tw) User Manual

Release: November, 2011
Penpower Technology Ltd.