

Driver Installation

Before starting with the driver installation please make sure that the tablet is not connected to your PC or MAC.

© **Windows Version**

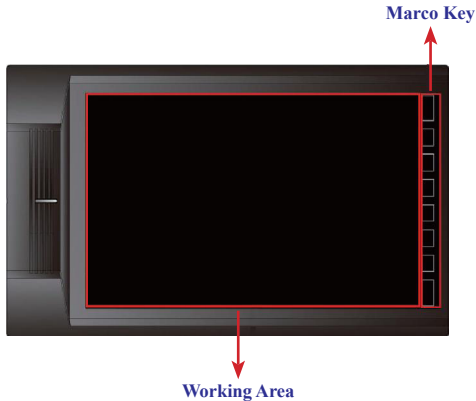
1. Insert the Driver CD into your CD drive and wait until the auto start window appears. On Windows Vista and Windows 7 you may confirm the Action by pressing [Continue] if the User Access Control window appear.
2. Simply follow the steps on the screen and finish the installation with restarting your system.

© **Mac Version**

1. Insert the Driver CD into your CD drive and wait until the Drive is loaded.
2. Click on the Tablet Icon and simply follow the steps on the screen and finish the installation with restarting your system.

Knowing Your Tablet

1. **Working Area:** The working area is the active area where the pen responds. The usage is different to mouse usage. The working area is equal with your monitor, you can directly point on the place you like to move the mouse to. If you move the pen to left bottom corner, the pointer on your display directly goes to this point. This makes work much more efficient and much quicker than using a mouse.
2. **Marco Key:** Please refer to E-manual on CD for Set up guidelines.



Knowing Your Pen

The Pen of TOOYA X Tablet is the connection between your hand and the graphic tablet. Just use and hold the pen like a normal pen. If you move over the tablet in max 10mm distance without touching it you can see the movement of the pointer. The pen tip is like left mouse buttons which also offer double click function. Further, the pen offers two buttons which can be programmed in Control Panel.



After a time it's necessary to exchange the pen tip. If the tip is not soft any more or leaves scratches (scratch noise) on the graphic tablet it's recommend to exchange the tip to avoid any damage on your tablet.

1. Use the pen tip remover tool like a classical tool you know from home. Grap the tip with the open end of the remover tool and pull out the tip with care.
2. Place the new tip in the pen and gently push it in until the end is reached. Don't use too much pressure to avoid damage of the pen.
3. How to change the battery

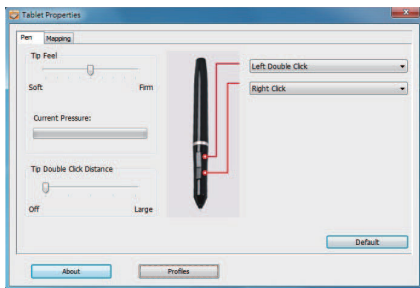


Control Panel

This paragraph describes the Windows control panel but can be adopt to Mac control panel as well.

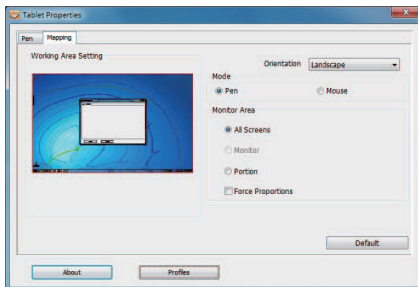
After driver installation, restart and successful connection of your Graphic tablet you will find a small Tablet Icon in the quick start bar close to your clock. Click on the Icon to open the Control Panel. The Control Panel is divided into 2 main parts

1. **Pen:** This page offers you a wide range of pen settings to customize the pen to your needs. Setup the functions like followed



Function	Values	Description
Tilt Sensitivity	Normal ~ High	Adjusts how sensitive the pen reacts on tilt. Important if you like to use the pen like a felt pen.
Tip Feel	Soft ~ Firm	Adjusts the sensitivity of the pen tip and see the result in Current Pressure bar. Use [Details] to setup more specific values for the pen tip.
Button Configuration		Adjusts the function of the two buttons on pen by choosing from drop-down list.
Tip Double Click Distance	Off ~ Large	Adjusts the time you have for a double click on pen tip. You can also disable the function by choosing off.

2. **Mapping:** This page offers a function to adjust the area on monitor you'd like to define as active area for the Pen.



Function	Values	Description
Mode	Pen, Mouse	Select if the Tablet should function like a Pen or a Mouse.
Monitor Area	All Screens, Monitor, Portion	Select [All Screens] to define the complete monitor as working area. If you have more than one monitor connected, you can choose [Monitor] and select which monitor is the active one. If you want to define a specific area of the monitor choose [Portion] and select the active area by dragging the red frame under [Working Area Settings] field.
Force Proportions	On, Off	When Force Proportion option is on, Tablet will auto-adjust according to the aspect ratio of PC/NB Monitors to maximize drawing and writing accuracy.